



Equipment
设备

XINGXING
MEDICAL
INSTRUMENT

星星医疗器械
XINGXING MEDICAL INSTRUMENT



高级颌架M1001
Articulator



高级颌架M1002
Articulator



简易仿头模M1003
simple manikin kit



简易仿头模M1004
simple manikin



简易仿头模M1005
simple manikin

星星医疗器械
XINGXING MEDICAL INSTRUMENT

XINGXING
MEDICAL
INSTRUMENT

Equipment
设备



仿头模肩部套装M1006
chair mount torso set



教学模拟实验系统-气控M1007
dental simulation training system-by air



教学模拟实验系统-电控M1008
dental simulation training system-by electric



教学模拟系统及技工桌M1009
Dental simulation & workbench system





Implant
种植

XINGXING
MEDICAL
INSTRUMENT

星星医疗器械
XINGXING MEDICAL INSTRUMENT



种植修复模型M2001

种植修复模型展示的是前牙种植、桩核修复、瓷贴面、上下牙种植后连桥修复、上下牙、全瓷冠连桥修复、牙结石、牙龈萎缩、牙周炎、浅龋、深龋及根端囊肿、阻生齿。

Implant and restoration model

Demonstrates implant on incisor, post and core crown, veneer, fixed bridge, tartar, inflamed with recession, bridge, caries, radicular cyst and all kinds of impaction.



新种植修复模型M2001-2

种植修复模型展示的是前牙种植、桩核修复、瓷贴面、上下牙种植后连桥修复、上下牙、全瓷冠连桥修复、牙结石、牙龈萎缩、牙周炎、浅龋、深龋及根端囊肿、阻生齿、牙神经清晰展示,可练习根管治疗。

Implant and restoration model with nerve

This model visually demonstrates nerves on one side. Allows practicing endo training on incisor and molar. Including implant on incisor, post and core crown, veneer, fixed bridge, tartar, inflamed gingiva with recession, mariland bridge, caries, radicular cyst and all kinds of impaction.



种植练习模型M2002

不同牙位缺失,可练习切开、种植、缝合,有仿骨质结构,真实感较强。

Implant practice model

The gingivae is made of silicone for cutting and suturing practices. Each part has different missing teeth.



种植练习模型M2003

不同牙位缺失,可练习切开、种植、缝合,有仿骨质结构,真实感较强,牙龈为连续的硅胶制品。

Implant practice model

The gingivae is made of silicone for cutting and suturing practices. Each part has different missing teeth.

星星医疗器械
XINGXING MEDICAL INSTRUMENT

XINGXING
MEDICAL
INSTRUMENT

Implant
种植



种植练习模型M2004

不同牙位缺失,可练习切开、种植、缝合,有仿骨质结构,真实感较强,牙龈为连续的硅胶制品。

Implant practice model

Each part has different missing teeth, for cutting, implant and suturing practice. The model is made from materials that assume the cancellous bone, and the gingivae is made of silicone.

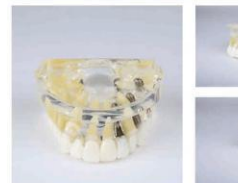


种植模型M2005

可清晰展示种植钉、基台、软牙龈,配有冠桥修复。

Implant model

Demonstrates implant, abutment, soft gingivae, crowns and bridge.



种植模型M2005-2

展示种植钉剖面结构,并有冠桥修复。

Implant model

Demonstrates implant, abutment, crowns and bridge.



种植模型M2006

种植修复,伴有牙齿的龋坏。

Implant model

For showing implant and restoration, caries.



Implant
种植

XINGXING
MEDICAL
INSTRUMENT

星星医疗器械
XINGXING MEDICAL INSTRUMENT



种植模型M2007

上半口：邻面龋、深龋、根裂、根端囊肿，种植体与骨质的关系。

Implant model

Contains caries, root fracture, cyst, and relationship between implants and bone.



种植模型M2008

烤瓷连桥、种植体修复、种植连桥。

Implant model

With ceramic bridge, crown and implant bridge.



种植练习M2009

缺牙区，为仿骨质结构，可练习切、缝合及种植练习。

Implant practice model

Mandibular jaw model for incision and drilling practices. Model comes with imitation bone.



下颌种植M2010

种植修复牙为冠根双色牙。

Implant model-mandibular

Implant model with natural color teeth.



星星医疗器械
XINGXING MEDICAL INSTRUMENT

XINGXING
MEDICAL
INSTRUMENT

Implant
种植



上颌种植模型M2011

种植修复牙为冠根双色牙。

Maxillary model

With implant and crown, completely transparent material filling visible natural color dentition.



上颌窦练习模型M2012

Sinus lift practice model-resin



上颌窦练习模型M2013S

该产品分为树脂材料。

Sinus lift practice model

Material:resin & silicone gum.



上颌窦练习模型M2013F

该产品分为硬泡材料。

Sinus lift practice model

It contains cancellous bone.



上颌窦练习模型M2014

仿骨质结构，可练习：切、缝合、种植及上颌窦提升。

Sinus lift practice model

Maxillary bone model that allows sinus lift practicing, incision and suturing.



Implant
种植

XINGXING
MEDICAL
INSTRUMENT

星星医疗器械
XINGXING MEDICAL INSTRUMENT



种植模型M2015

展示上后牙种植体修复和上颌窦的关系。

Implant model-upper

- * Restoration on molar
- * Effect between sinus and implant.

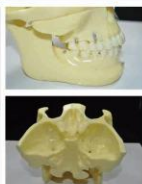


种植支抗模型M2016

展示正畸支抗钉在上下颌骨的常用种植位置。

Orthodontic implant model

For showing the exact position
for ortho implant.



种植模型M2017R

通俗形象地展示了单颗牙缺失的种植修复和普遍传统烤瓷修复的优缺点。

Implant analysis model - red

Explain the features, advantages VS
disadvantages of single implant
and bridge.



种植模型M2017I

通俗形象清晰地展示了单颗牙缺失的种植修复和普遍传统烤瓷修复的优缺点。

Implant analysis model - clear

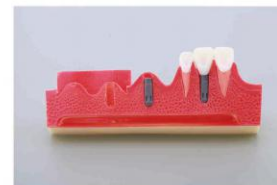
Explain the features, advantages VS
disadvantages of single implant
and bridge.



星星医疗器械
XINGXING MEDICAL INSTRUMENT

XINGXING
MEDICAL
INSTRUMENT

Implant
种植



种植步骤演示M2018

切开、打孔、种植体植入、烤瓷冠修复。

Steps for implant

Demonstrates the steps of implant,
such as incisor drilling firstly put
in implant, then make CMC at last.



水晶种植模型M2019

全方位立体透明展示种植体结构，种植体可拆分，直观形象。此款为水晶材质，透明度好，硬度高，无划痕。

大款尺寸：5*5*8CM
小款尺寸：3*3*8CM

Crystal implant model Big/Small

Can see the implant which integrated
by three parts through crystal, the stand
and crown are made of crystal. It is clear,
hard and no scratches.



水晶模型3*1M2020

全方位立体透明展示种植体结构，种植体可拆分，直观形象。此款为进口塑料材质。

Implant model 3*1

The model has three parts, stand,
implant and crown. The metal implant
can be separated into two parts.



骨块M2021

根据客户需要生产不同密度和硬度的骨块，大小可根据客户需求定制。

Bone graft

It can be changed to any size, any type.





Implant
种植

XINGXING
MEDICAL
INSTRUMENT

星星医疗器械
XINGXING MEDICAL INSTRUMENT

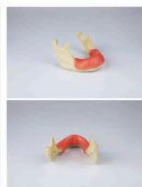


植牙练习模型M2022

可在下颌骨上种植练习，骨质硬度可选。

Drilling practice model-jaw

Allows drilling practice, accept any type.



植牙练习模型M2023

缺牙区下为仿骨质，练习切开、种植。

Implant practice model-jaw with gum

For doing a comprehensive implant practice like incision and implant.



上颌练习模型M2024

上颌不同牙位的缺失，可练习切开、种植、缝合，有仿骨质结构，真实感较强，牙龈为硅胶制品。

Implant practice model-upper

Partially edentulous model could practice incision, implant, suture, just feeling like bone while practicing.



下颌骨种植模型M2025

整体为树脂，缺牙区为仿骨质充填，用于种植练习。

Implant practice model

The model is made of resin and cancellous bone inside.

XINGXING
MEDICAL
INSTRUMENT

星星医疗器械
XINGXING MEDICAL INSTRUMENT

Implant
种植



全口练习模型M2026

练习切开、种植、缝合。

Implant practice model

Partially edentulous model could practice incision, implant, suture.



发泡下颌骨带硅胶M2027

练习切开、种植、缝合，仿骨质。

Mandibular jaw model with silicone

Could practice incision, implant, suture.



发泡下口缺失种植M2028

仿骨质，可进行种植练习。

Mandibular model

Could practice implant on this cancellous model.



上颌窦加下颌种植M2029

可练习切开、种植、缝合练习，并可进行种植提升练习。

Sinus lift practice model

For practicing incision, implant and suturing.



Implant
种植

XINGXING
MEDICAL
INSTRUMENT

星星医疗器械
XINGXING MEDICAL INSTRUMENT



缺失种植下缺M2030

可练习切开、种植、缝合、仿骨质。

Implant practice model

Practical study model with missing teeth for implant and suturing.



支抗钉练习模型M2031

Ortho implant practice model



牙周练习模型M2032

带牙龈。

Partially edentulous model

For incision and suturing practices.



星星医疗器械
XINGXING MEDICAL INSTRUMENT

XINGXING
MEDICAL
INSTRUMENT

Orthodontic
正畸



金属托槽演示模型M3001

展示金属托槽在牙面上的粘贴位置，并可在上面进行弓丝结扎、弯制练习。

Model with metal bracket

Demonstrates the exact position of bracket, and practice wires, ligature ties on this model.



陶瓷托槽演示模型M3002

展示陶瓷托槽在牙面上的粘贴位置，并可在上面进行弓丝结扎、弯制练习。展示托槽的美观特点。

Model with ceramic bracket

Teaching how to fix bracket on teeth, and practice wires, ligatures on this model.



半金属半陶瓷托槽演示模型M3003

左右对称，展示两种托槽临床应用的优势。

Model with metal and ceramic bracket

Compares the advantages and disadvantages of metal bracket VS ceramic bracket.



舌侧托槽演示模型M3004

展示舌侧托槽在牙面上的粘贴位置，并可在上面进行弓丝结扎、弯制练习和舌侧托槽的美观性。

Model with lingual bracket

Demonstrates the exact position of bracket, and practice wires, ligature ties on this model.





Orthodontic
正畸

XINGXING
MEDICAL
INSTRUMENT

星星医疗器械
XINGXING MEDICAL INSTRUMENT



矫正模型M3005

展示托槽的粘贴、结扎、牵拉，牙齿拥挤的拔除，支抗钉的位置，给病人示说正畸治疗过程。

Orthodontic model

Four premolar extracted with bracket and ligature wire affixed, used for demonstrating orthodontic treatment.



矫正模型M3005-2

展示托槽的粘贴、结扎、牵拉，牙齿拥挤的拔除，支抗钉的位置，给病人示说正畸治疗过程。解剖型牙齿可清晰展示牙根的方位。

Orthodontic model

Four premolar extracted with bracket and ligature wire affixed, used for demonstrating orthodontic treatment. The root can be seen through clear gum.



矫正模型M3005-3

展示托槽的粘贴、结扎、牵拉，牙齿拥挤的拔除，支抗钉的位置，给病人示说正畸治疗过程。解剖型牙齿可清晰展示牙根的方位。

Orthodontic model

Four premolar extracted with bracket and ligature wire affixed, used for demonstrating orthodontic treatment. The root can be seen through clear gum.



功能性矫正器M3006

Orthodontic model with retainer

星星医疗器械
XINGXING MEDICAL INSTRUMENT

XINGXING
MEDICAL
INSTRUMENT

Orthodontic
正畸



保持器演示模型M3007

展示上颌保持器的结构。

Model with retainer

Demonstrates the structure of retainer.

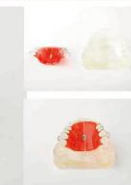


保持器演示模型M3008

下颌带微垫的扩弓器，内有螺旋扩大器，可展示加力过程。

Retainer

The curative effect of lower jaw lip-side expansion for anterior teeth.



保持器演示模型M3009

上颌内有螺旋扩大器，可展示加力过程。

Retainer

The curative effect of upper jaw lip-side expansion for anterior teeth.



保持器演示模型M3010

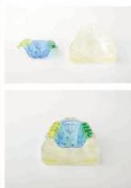
透明彩色美观的下颌保持器。

Retainer with different color.



XINGXING
MEDICAL
INSTRUMENT

星星医疗器械
XINGXING MEDICAL INSTRUMENT



保持器演示模型M3011

透明彩色美观的下颌保持器。

Model with retainer

Model with nice color retainer.



自锁托槽模型M3012

自锁、直丝、陶瓷、舌侧各四分之一区间。

Model with self-ligating bracket

Shows four kinds of brackets, like self-ligating, roth, ceramic and lingual brackets.



四分之一对比托槽模型M3013

展示陶瓷、自锁、直丝、方丝四种托槽临床应用的优势缺点。

Model with four kind of bracket

Demonstrates the advantages and disadvantages of ceramic, lingual, roth and edgewise brackets.



10*1错颌模型M3014

(任选3个展示)

临床常见错颌畸形及理想颌。

Malocclusion model

Show normal malocclusion and normal occlusion model.

星星医疗器械
XINGXING MEDICAL INSTRUMENT

XINGXING
MEDICAL
INSTRUMENT



成人病理模型M4001

龋坏囊肿、牙结石、种植体、阻生齿等。

Adult pathologies model

Model for demonstrating caries, apical cyst, tartar, implant, impaction etc.



成人病理模型M4001-2

龋坏囊肿、牙结石、种植体、阻生齿等牙齿缺失及邻牙伸长。

Adult pathologies model-missing tooth

Model including caries, apical cyst, tartar, implant, impaction and missing tooth.



儿童病理模型M4002

龋坏、囊肿及瘘管，混合牙列的状态。

Pediatric model with pathologies

Pediatric model with caries, cyst, and fistula. It demonstrates the developing dentition of age 6-9.



牙周病模型M4003

牙龈萎缩、牙结石等。

Periodontal model

Demonstrates severely inflamed gingivae with calculus, hard gingivae.



龋齿治疗前后对比模型M4004

牙齿龋坏、缺失及对应的冠桥修复。

Caries treatment model

The model is used for comparing the state before and after treatment, like caries, radicular cyst, implant, fixed bridge and many other cases.



2倍病理修复模型M4005

龋坏、囊肿、根折、阻生齿、牙结石及种植单冠、连桥修复。

2 times implant and restoration model

It has caries, cyst, root fracture, impaction tartar, single crown and fixed bridge.



2倍病理模型M4006

龋坏、囊肿、阻生、种植及冠裂。

2 times pathology model

It has caries, cyst, impaction, fracture.



牙髓病治疗模型M4007

展示髓坏的治疗过程。

Endodontic model

This model demonstrates 5 stages of root canal procedure.



牙髓病治疗模型M4007-2

前磨牙及牙体髓坏治疗过程。

Endodontic treatment model

This model demonstrates 5 stages of root canal procedure on 2nd premolar.



牙髓病治疗模型M4008

切牙牙体髓坏治疗过程。

Endodontic treatment model-incisor

This model demonstrates 5 stages of root canal procedure on central incisor.

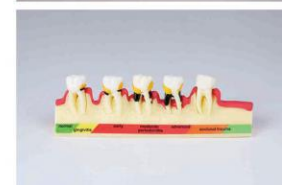


右下牙牙组织分解模型M4009

牙齿龋坏及冠修复。

Molar cross section study model

Showing impaction, abscess, healthy and diseased pulp with good and bad fillings.

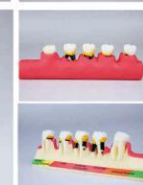


牙周病分类模型M4010

清晰展示牙周病的进程。

Periodontal disease model

Demonstrates the progress of periodontal disease.





Pathological
病理

XINGXING
MEDICAL
INSTRUMENT

星星医疗器械
XINGXING MEDICAL INSTRUMENT



龋坏模型M4011

龋坏的发展及继发龋。

Caries illustration model

Explains the progress of caries.



根管治疗模型M4012

清晰展示上磨牙根管治疗过程。

Root canal model

Shows the steps of root canal treatment.

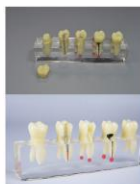


窝沟封闭模型M4013

示窝沟封闭的优缺点。

Caries model

Sealant and inlay demonstration model.



下颌骨模型M4014

龋坏及根端囊肿。

Mandible model

Showing impaction, caries and abscess.



Pathological
病理



XINGXING
MEDICAL
INSTRUMENT

星星医疗器械
XINGXING MEDICAL INSTRUMENT



四倍牙齿综合病模型M4015

展示牙齿内部结构，常见龋坏部位及
龋齿演变过程。

4 times pathologies model

Showing pathological tooth and the progress
of caries.



四倍牙齿分解模型M4016

清晰分解展示牙齿的形态及内部结构。

4 times anatomy model

Explains the endodontics and tooth anatomy.



牙周病模型M4017

牙结石、牙周萎缩及正常牙龈，牙龈
可拆换。

Periodontal model

This model contains tartar, gingivae recession,
and healthy gingivae, it has replacement of
gingivae.



牙髓病治疗模型M4018

展示乳牙髓病的治疗过程。

Endodontic treatment model

Demonstrates each step of endodontic
treatment.





XINGXING
MEDICAL
INSTRUMENT

星星医疗器械
XINGXING MEDICAL INSTRUMENT



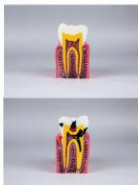
病理修复模型M4019
可展示龋坏、根端囊肿、根折、息肉。
Pathologies model
Shows caries, fractured root, cyst, pulp polyp.



病理修复模型M4019-2
龋坏、种植、神经、息肉。
Pathologies model with nerve
Shows caries, implant, nerves, and pulp polyp.



龋齿演示模型M4020
龋齿演变的进程并伴有瘘管。
Caries model
For showing the progress of caries, fistula.



龋齿演示模型M4021
展示牙齿的正常解剖剖面、前、中、深横的病患。
Caries model
Compares the healthy and caries tooth.

星星医疗器械
XINGXING MEDICAL INSTRUMENT

XINGXING
MEDICAL
INSTRUMENT



牙周病模型M4022
部分牙的牙周病变，牙龈可拆换。
Periodontal model
Perio demonstration model and gingivae can be removed and changed.



牙周病模型M4023
牙结石、牙龈萎缩、牙周病变。
Periodontal model
Demonstrates severely inflamed gingivae with calculus and gingivitis.



牙周病模型M4024
牙结石、牙龈萎缩、牙龈增生。
Periodontal model
Demonstrates severely inflamed gingivae with calculus, hard gingivae.



牙周病M4025
牙结石、牙龈萎缩、牙周病变。
Periodontal model
Calculus, gingivae recession, and gingivitis.



Periodontal
牙周病

XINGXING
MEDICAL
INSTRUMENT

星星医疗器械
XINGXING MEDICAL INSTRUMENT



口腔外科综合练习模型M4026

能进行脓肿切开、根尖切除、骨修整、牙龈切开缝合、牙黄的拔除。

Training model for oral surgery

This model can practice incision of an abscess, removable of bone torus and tooth extraction.



牙周病练习模型M4027

牙结石、牙周炎症。

Periodontal practice model

It has calculus and gingivitis.



牙周病透明牙龈M4028

牙龈为透明色，清晰可见牙槽骨萎缩吸收。

Periodontal model with transparent gum

Resorption and other bone defects on the entire alveolar bone.



病理模型M4029

龋坏、根尖炎症、根管治疗及牙结石、牙周萎缩。

Pathologies model

Caries, apicitis, root canal treatment, calculus, gingival recession can be found from this model.



脓肿切开练习模型M4030

脓肿切开，引流，双侧脓肿可更换。

Pus removal practice model

This model can practice incision and pus removal. With easily replaceable pus area.

星星医疗器械
XINGXING MEDICAL INSTRUMENT

XINGXING
MEDICAL
INSTRUMENT

Skull
头颅



下颌骨M5001

常见骨折部位及钛板固定。

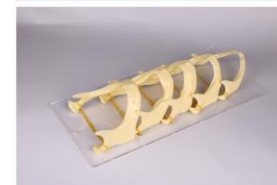
Jaw

Normal fracture part fixed with titanium plate.



上颌骨发育模型M5002-U

The development of upper jaw



下颌骨发育模型M5002-L

上颌骨退形性变的过程。

The development of lower jaw

The development of lower jaw

The development of lower jaw

The development of lower jaw

The development of lower jaw

The development of lower jaw

The development of lower jaw

The development of lower jaw

The development of lower jaw

The development of lower jaw

The development of lower jaw

The development of lower jaw

The development of lower jaw

The development of lower jaw

The development of lower jaw

The development of lower jaw

The development of lower jaw

The development of lower jaw

The development of lower jaw

The development of lower jaw

The development of lower jaw

The development of lower jaw

The development of lower jaw

The development of lower jaw

The development of lower jaw

The development of lower jaw

The development of lower jaw

The development of lower jaw

The development of lower jaw

The development of lower jaw

The development of lower jaw

The development of lower jaw

The development of lower jaw

The development of lower jaw

The development of lower jaw

The development of lower jaw



迷你头颅M5003

仿真头颅:95*100*70mm

Mini skull

size:95*100*70 mm



头颅骨折固定模型M5004

既有骨折固定又有种植支抗钉。

skull model

Demonstrates fracture and ortho implant.



头颅骨折固定模型M5005

头颅常见骨折固定部位。

Skull model

Normal fracture part which fixed by titanium plate.



Skull
头颅

XINGXING
MEDICAL
INSTRUMENT

星星医疗器械
XINGXING MEDICAL INSTRUMENT



头颅模型M5006
头颅可拆分十部分，双色牙
颌底颜色展示窦、动静脉。
Skull model
The skull model can be
separated into 10 parts,
enables the observation
of 2 colored teeth,
sinuses, arteries and
nerves.



头颅模型M5007
Skull model



头颅模型M5008
可拆分，有上颌窦膜。
Skull model

10 parts demonstration model with sinuses.



头颅模型M5009
展示肌肉附着点。
Skull model
Shows the attachment
of the muscle.



头颅模型带锁扣M5011
Skull model with lock



**头颅模型带锁扣
M5010**
Skull model with lock

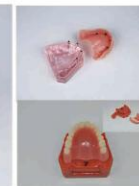
星星医疗器械
XINGXING MEDICAL INSTRUMENT

XINGXING
MEDICAL
INSTRUMENT

Restoration
修复



修复模型M6001
4个微型种植钉，上颌义齿修复。
Overdenture model
Overdenture model with 4 implants
-maxillary.



修复模型M6001A
Overdenture model



修复模型M6002
2颗种植钉义齿修复。
Overdenture model with 2
implants
Mandibular overdenture
model with 2 implants.



修复模型M6002A
Overdenture model



修复模型M6003
4颗种植钉义齿修复。
Overdenture model with 4
implants
Mandibular overdenture
model with 4 implants.



修复模型M6004
Restoration model



修复模型M6005
透明下颌骨，展示种植钉的位置及方向，
义齿修复。
Jaw with overdenture
With transparent bone and shows
the position and direction of implants.



Restoration
修复

XINGXING
MEDICAL
INSTRUMENT

星星医疗器械
XINGXING MEDICAL INSTRUMENT



种植修复对比模型M6006

Implant model with restoration



种植修复模型M6007

Overdenture model with 2 implants



修复模型M6008

(银杆卡)

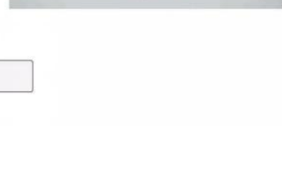
Implant model with silver bar



修复模型M6009

(金杆卡)

Implant model with golden bar



套筒冠修复模型M6010

Model with telescope crown



星星医疗器械
XINGXING MEDICAL INSTRUMENT

XINGXING
MEDICAL
INSTRUMENT

Standard
标准



标准模型M7001

Natural size model
Blue, pink, clear, red color.



标准模型M7002

Natural size model
With different color.



标准模型M7003

(平板、斜板两款)

Natural size model
(full hinge/half hinge)



标准模型M7004R

Natural size model-red





Standard
标准

XINGXING
MEDICAL
INSTRUMENT

星星医疗器械
XINGXING MEDICAL INSTRUMENT



标准模型M7004W

Natural size model -white



软牙龈可拔牙模型M7005

(斜坡)

Soft gum with removable teeth
-full hinge



可拔牙模型M7006

(棕色、浅色)

Soft gum with removable teeth
-without hinge
brown /yellow color.



标准模型M7007

(斜坡)

Natural size model -full hinge



星星医疗器械
XINGXING MEDICAL INSTRUMENT

XINGXING
MEDICAL
INSTRUMENT

Standard
标准



成人可拔牙标准模型M7008

Soft gum with removable teeth
-adult



儿童可拔牙标准模型M7009

Soft gum with removable teeth
-baby



成人刷牙模型M7010

Tooth brushing demonstration model
-adult



儿童刷牙模型M7010

Tooth brushing demonstration model
-baby





Standard
标准

XINGXING
MEDICAL
INSTRUMENT

星星医疗器械
XINGXING MEDICAL INSTRUMENT



乳牙交替模型M7011

展示3-6岁乳恒牙的萌出及发育情况。

Pediatric development model
age 3-6

Demonstrates developing dentition
of pediatric development during age 3-6.



乳牙交替模型M7012

展示5-9岁乳恒牙的萌出及发育情况。

Pediatric development model
age 5-9

Demonstrates developing dentition
of pediatric development during age 5-9.



乳牙交替模型M7013

展示9-12岁混合牙列。

Pediatric development model
age 9-12

Demonstrates developing dentition
of pediatric development during age 9-12.



乳牙模型M7014

标准乳牙模型，可装头模上练习。

Pediatric practice model

Standard model for practicing, can
be installed into manikin.

星星医疗器械
XINGXING MEDICAL INSTRUMENT

XINGXING
MEDICAL
INSTRUMENT

Standard
标准



乳恒牙交替模型M7015

Model with mix dentition



标准模型M7016

Pediatric model for 7 years old



标准模型M7017

Pediatric model for 3 years old



标准模型M7018

Pediatric model for 9 years old



Standard
标准

XINGXING
MEDICAL
INSTRUMENT

星星医疗器械
XINGXING MEDICAL INSTRUMENT



乳恒牙交替模型M7019

(保持器)

乳牙过早缺失，间隙保持器可防止对颌牙伸长，及邻牙倾斜，给恒牙萌出保持间隙。



Mix dentition model

Early missing tooth on this model, both 1st and 2nd primary bicuspids edentulous with removable flipper.



乳牙模型M7020

Pediatric teeth 20*1



成人牙齿模型28颗M7021

Adult teeth 28*1



成人牙齿模型32颗M7022

Adult teeth 32*1

星星医疗器械
XINGXING MEDICAL INSTRUMENT

XINGXING
MEDICAL
INSTRUMENT

Standard
标准



六倍牙神经模型M7023

6 times tooth model



2倍恒牙模型M7024

2 times permanent teeth



4倍窝洞制备模型M7025

4 times cavity model



2.5倍解剖和雕刻用双色离体牙M7026

2.5 times teeth





Standard
标准

XINGXING
MEDICAL
INSTRUMENT

星星医疗器械
XINGXING MEDICAL INSTRUMENT

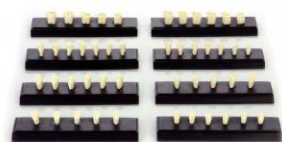


1.5倍牙冠雕刻顺序模型
M7027

1.5 times model for crown carving procedure



牙体制备模型M7028
Cavity preparation model



牙体制备模型M7029
Preparation teeth model



制备牙齿模型M7030
Prepared teeth set



1.2倍恒牙模型M7031
1.2 times teeth model

星星医疗器械
XINGXING MEDICAL INSTRUMENT

XINGXING
MEDICAL
INSTRUMENT

Standard
标准



乳牙剖面模型M7032
Pediatric teeth with nerve



开髓定位模型 M7033
Dental pulp location



10倍三维牙M7034
10 times 3D model



10倍标准正畸模型
M7035
10 times ortho model



Standard
标准

XINGXING
MEDICAL
INSTRUMENT

星星医疗器械
XINGXING MEDICAL INSTRUMENT



可拆卸三维磨牙M7036
3D Molar



可拆卸头颅M7037
3D Skull



微型骨架M7038
3D Skeleton



微型解剖模型M7039
3D Model with muscle and nerve

星星医疗器械
XINGXING MEDICAL INSTRUMENT

XINGXING
MEDICAL
INSTRUMENT

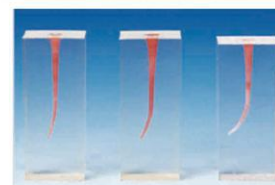
Practice
练习



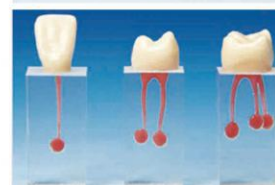
根管练习块M8001
Endo training block



根管练习块M8002
Endo training block



根管练习块M8003
Endo training block



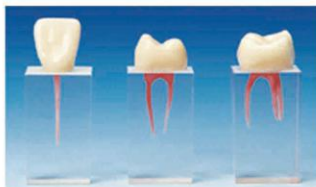
根管练习块M8004
Root canal model



Practice
练习

XINGXING
MEDICAL
INSTRUMENT

星星医疗器械
XINGXING MEDICAL INSTRUMENT



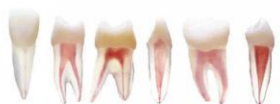
根管练习块M8005

Root canal model



根管练习模型M8006

Root canal model



带髓腔牙齿模型M8007

Root pulp cavity model



教学练习模型M8008

Root pulp cavity model

星星医疗器械
XINGXING MEDICAL INSTRUMENT

XINGXING
MEDICAL
INSTRUMENT

Practice
练习



标准模型M8009

(28颗螺钉固定牙齿)

Standard model with 28 screw-in teeth



标准模型M8010

(32颗螺钉固定牙齿)

Standard model with 32 screw-in teeth



标准模型M8011

(28颗螺钉固定牙齿)

Standard model with 28 screw-in teeth



标准模型M8012

(32颗螺钉固定牙齿)

Standard model with 32 screw-in teeth



Practice
练习

XINGXING
MEDICAL
INSTRUMENT

星星医疗器械
XINGXING MEDICAL INSTRUMENT



标准模型M8013

(28颗螺钉固定牙齿)

Standard model with 28 screw-in teeth



标准模型M8014

(32颗螺钉固定牙齿)

Standard model with 32 screw-in teeth



标准模型M8015

(28颗螺钉固定牙齿)

Standard model with 28 screw-in teeth



拔牙练习模型M8016

Extraction training model



星星医疗器械
XINGXING MEDICAL INSTRUMENT

XINGXING
MEDICAL
INSTRUMENT

Practice
练习



正畸练习模型M8017

Typodont practice model



Wax form (five types)



Replacement teeth



无牙颌模型阴模M8018

Edentulous silicone model



有牙颌模型阴模M8019

Moulds for adult model



带孔有牙颌阴模M8019-1

Moulds for adult model





Practice
练习

XINGXING
MEDICAL
INSTRUMENT

星星医疗器械
XINGXING MEDICAL INSTRUMENT



麻醉练习模型M8020
当学生麻醉进针位置正确时会发出提示音信号，
默托可换。
Oral local anaesthesia training model
When the injection position is correct,
the buzzer will emit suggestive sound.



备牙练习模型M8021
(F28颗)
Replacement teeth 28*1
For model M8013.



备牙练习模型M8022
(F32颗)
Replacement teeth 32*1
For model M8014.



无牙颌蜡堤M8023
Wax form of edentulous model

星星医疗器械
XINGXING MEDICAL INSTRUMENT

XINGXING
MEDICAL
INSTRUMENT

Practice
练习



备牙练习模型M8024
(R28颗)
Replacement teeth 28*1
For model M8009 and 8011.



备牙练习模型M8025
(R32颗)
Replacement teeth 32*1
For model M8010 and 8012.



储牙盒子M8026
Box



备牙练习模型M8027
Preparation model



济宁星星医疗器械有限公司
JINING XINGXING MEDICAL INSTRUMENT CO.,LTD



JINING XINGXING MEDICAL INSTRUMENT CO.,LTD

Add: 1ST TAIBEI ROAD,JINING,CHINA

Tel: 86 537-2600529/2601032

Fax:86 537-2600722

Website : <http://www.xxylqx.com>

E-mail:xxgs2@126.com xxylqx@hotmail.com

品质非凡 · 精益求精

