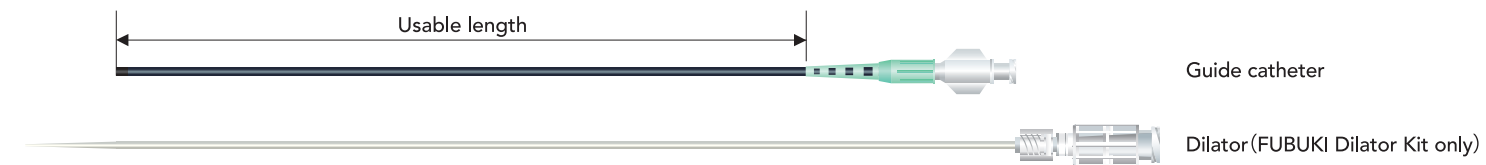


Structure & ordering information

■ Structure



ASAHI
FUBUKI

Product	Catalog No.	Usable length	Coating length	Tip shape
ASAHI FUBUKI 6Fr	WAIN-FBK-6A	90cm	15cm	Angled
	WAIN-FBK-6S	90cm	15cm	Straight
	WAIN-FBK-6A80	80cm	15cm	Angled
	WAIN-FBK-6S80	80cm	15cm	Straight
	WAIN-FBK-6AL	100cm	15cm	Angled
	WAIN-FBK-6SL	100cm	15cm	Straight
	WAIN-FBK-6A110	110cm	15cm	Angled
	WAIN-FBK-6S110	110cm	15cm	Straight
ASAHI FUBUKI 7Fr	WAIN-FBK-7A	90cm	15cm	Angled
	WAIN-FBK-7S	90cm	15cm	Straight
	WAIN-FBK-7A80	80cm	15cm	Angled
	WAIN-FBK-7S80	80cm	15cm	Straight
	WAIN-FBK-7AL	100cm	15cm	Angled
	WAIN-FBK-7SL	100cm	15cm	Straight
	WAIN-FBK-7A110	110cm	15cm	Angled
	WAIN-FBK-7S110	110cm	15cm	Straight
ASAHI FUBUKI 8Fr	WAIN-FBK-8S	90cm	5cm	Straight
	WAIN-FBK-8S80	80cm	5cm	Straight
	WAIN-FBK-8SL	100cm	5cm	Straight
	WAIN-FBK-8S110	110cm	5cm	Straight

ASAHI
FUBUKI 043

Product	Catalog No.	Usable length	Coating length	Tip shape
ASAHI FUBUKI 043	WAIN-FBK-4-120	120cm	105cm	Straight
	WAIN-FBK-4-125	125cm	110cm	Straight
	WAIN-FBK-4-130	130cm	115cm	Straight
Stylet and Peel-away included (FUBUKI 043 only)				

ASAHI
FUBUKI

Product	Catalog No.	Usable length	Coating length	Tip shape
ASAHI FUBUKI Dilator Kit 4Fr	WAIN-FBK-4AD	90cm	15cm	Angled
	WAIN-FBK-4SD	90cm	15cm	Straight
	WAIN-FBK-4AD80	80cm	15cm	Angled
	WAIN-FBK-4SD80	80cm	15cm	Straight
	WAIN-FBK-4ADL	100cm	15cm	Angled
	WAIN-FBK-4SDL	100cm	15cm	Straight
	WAIN-FBK-4AD110	110cm	15cm	Angled
	WAIN-FBK-4SD110	110cm	15cm	Straight
ASAHI FUBUKI Dilator Kit 5Fr	WAIN-FBK-5AD	90cm	15cm	Angled
	WAIN-FBK-5SD	90cm	15cm	Straight
	WAIN-FBK-5AD80	80cm	15cm	Angled
	WAIN-FBK-5SD80	80cm	15cm	Straight
	WAIN-FBK-5ADL	100cm	15cm	Angled
	WAIN-FBK-5SDL	100cm	15cm	Straight
	WAIN-FBK-5AD110	110cm	15cm	Angled
	WAIN-FBK-5SD110	110cm	15cm	Straight
ASAHI FUBUKI Dilator Kit 6Fr	WAIN-FBK-6SD	90cm	5cm	Straight
	WAIN-FBK-6SD80	80cm	5cm	Straight
	WAIN-FBK-6SDL	100cm	5cm	Straight
	WAIN-FBK-6SD110	110cm	5cm	Straight



© 2017 ASAHI INTECC CO., LTD.
*ASAHI" and "FUBUKI" are trademarks or registered trademarks of ASAHI INTECC CO., LTD. in Japan and other countries.

Manufactured by:



ASAHI INTECC CO.,LTD.

3-100 Akatsuki-cho, Seto, Aichi 489-0071 Japan

Contact phone number: +81-561-86-9101

<http://www.asahi-intecc.com>

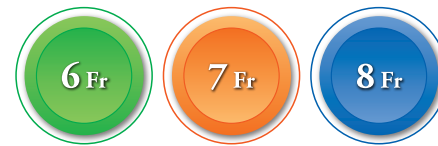
Distributed by:

ASAHI
FUBUKI Series
Neurovascular Guide Catheter



A high performance line of neurovascular guide catheters in a wide range of sizes

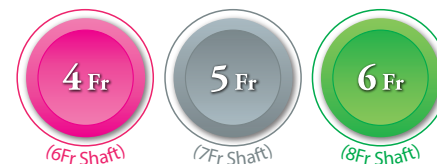
**ASAHI
FUBUKI**
Neurovascular Guide Catheter



Stable platform for your procedure.



**ASAHI
FUBUKI**
Neurovascular Guide Catheter Dilator Kit

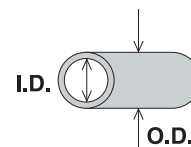


A larger lumen guide with a smaller puncture site.

Neurovascular guide catheter docked with a dilator replacing the need for a sheath to minimize size of puncture site.

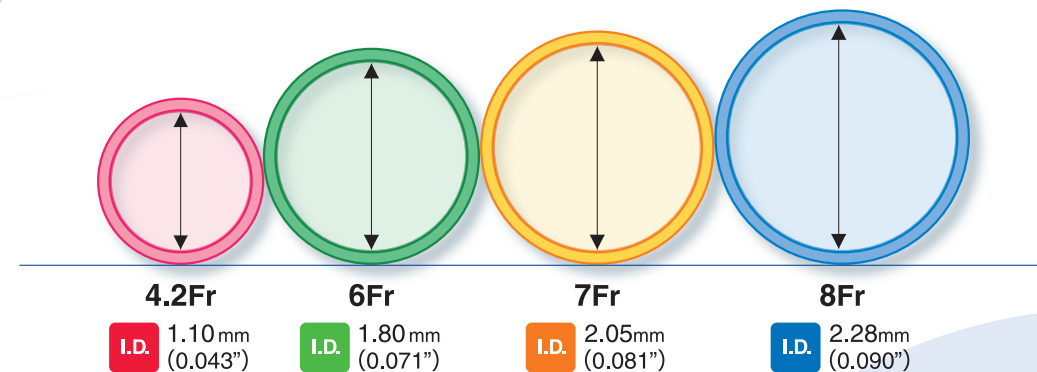
FUBUKI Dilator Kit French sizes refer to the sheath size that would normally be required to introduce a guide catheter of the same size. The 4/5/6Fr FUBUKI Dilator Kit have the same shaft as the 6/7/8Fr regular FUBUKI, respectively.

ASAHI FUBUKI Dilator Kit (Sheath size)	I.D.	O.D.
4Fr	1.80mm (0.071")	2.09mm (6Fr)
5Fr	2.05mm (0.081")	2.40mm (7Fr)
6Fr	2.28mm (0.090")	2.70mm (8Fr)



Features of ASAHI FUBUKI 6, 7, 8 Fr and ASAHI FUBUKI Dilator Kit 4, 5, 6Fr

- Flexibility**
 - Soft tip and flexible distal shaft minimizes vessel injury.
- Pushability**
 - Well-balanced shaft with increased rigidity provides stable deployment and optimal pushability.
- Lubricity**
 - Hydrophilic coating from the tip to 15cm (FUBUKI 8Fr and FUBUKI Dilator Kit 6Fr) allows smooth navigation through aortic arch and vessel ostium.
- Visibility**
 - Visibility provided by a platinum marker on the tip and radiopaque material in the shaft.



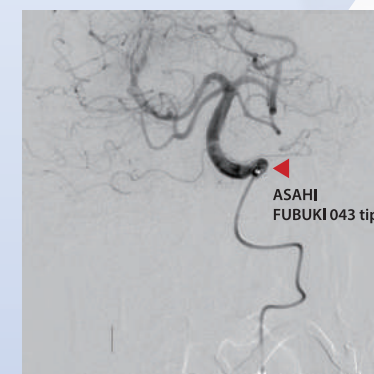
**ASAHI
FUBUKI 043**
Distal Support System



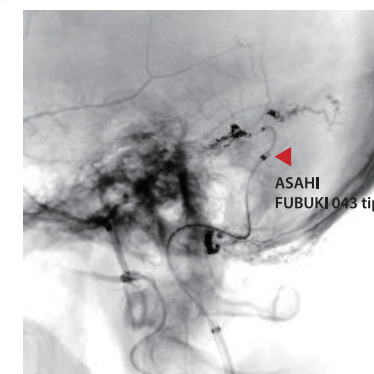
Strong support for delivering devices.

Features of ASAHI FUBUKI 043 4.2Fr (ID: 1.10mm 0.043")

- Trackability**
 - Hydrophilic coating and flexible soft tube provides superb trackability in sharp bends or tortuous vessels.
- Enhanced kink resistance**
 - Proprietary wire braiding technology enhances kink resistance and maintains lumen integrity.
- Delivery Support**
 - Large inner lumen 1.10mm (0.043") with PTFE coating enables smooth delivery of the microcatheter.



In meningeoma treatment



In AVF treatment