



mindray

HyPort B30
Medical Supply Unit



www.mindray.com

P/N:ENG-HyPort B30-210285X6P-20200210
©2020 Shenzhen Mindray Bio-Medical Electronics Co.,Ltd. All rights reserved.

mindray
healthcare within reach



HyPort B30

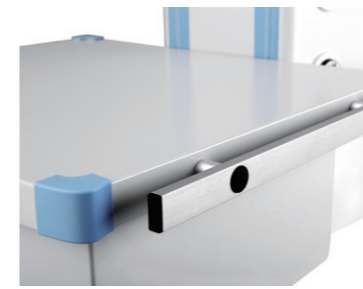
Medical Supply Unit

With the higher requirement of the healthcare, and continuing focus on the efficient clinical workflow, the advanced medical technology is always demanded from the patients and hospital. While some hospitals have limited space and budget, they search for a simple pendant solution to enhance the work efficiency and better care for the patient. Mindray HyPort B30 provides a simple, compact and cost-effective design for Anesthesia Pendant and Surgical Pendant in OR and ICU Pendant to meet this requirement.

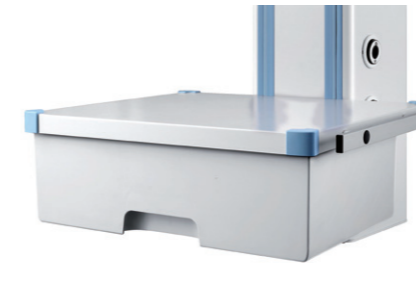
- Less space needed with slimmer column design
- Easy to handle for nurse after reducing pendant weight
- Hygienic surface with anti-bacteria coating
- Built-in rails for accessories and no exposed screws



Built-in rails, more hygienic



Anti-collision shelf corner protection



Shelf with drawer and side rails



Anti-bacteria coating



More options for electric outlets



More options for gas outlets



Anesthesia Pendant with single arm, column version



Surgical Pendant with double arms, head version



ICU Pendant with single arm, column version

Technical data

HyPort B30

Base



Short base, height: 200mm



Long base, height: 400mm

Ceiling cover



Ceiling cover, height: 150mm



Ceiling cover, height: 77mm



Ceiling cover, flat, height: 10mm

Mechanical arm



Arm length	Max. load(kg)
750mm, 1000mm	80
750mm+750mm	80

Suspension tube



Ceiling height (m)	Suspension tube length (mm)	With ceiling cover 77mm		
		Without arm	Single arm	Double arms
2.4	-	-	400	-
2.5	-	-	400	400
2.6	-	-	600	400
2.7	1,000	1,000	600	400
2.8	1,000	1,000	800	600
2.9	1,000	1,000	800	600
3	1,200	1,200	1,000	800
3.1	1,200	1,200	1,000	800
3.2	-	-	1,200	1,000
3.3	-	-	1,200	1,000

Distribution



Distribution column height: 800mm, 1000mm



Distribution head length: 680mm, 780mm

Accessories

Accessory type	Dimensions	Max. load(kg)
Shelf	Rail-mount version: 530mm(W)x480mm(D) Pole-mount version: 530mm(W)x340mm(D) Pole-mount version: 630mm(W)x340mm(D)	30
Drawer	Rail-mount version: 530mm(W)x480mm(D)x150mm(H) Pole-mount version: 530mm(W)x340mm(D)x150mm(H) Pole-mount version: 630mm(W)x340mm(D)x150mm(H)	5
Infusion set	Arm length: 300mm, 300mm+300mm Infusion pole length: 1,000mm	20