



# **VESTEL WATER HEATER Product Range 2024**

R N A T I O N A L . C O M



Cylindrical Designs

Square Designs

# Water Heater Product Range Designs

# General Features



## Mechanic Control Products

## Digital Control Products

Temperature Range:	0°C – 85°C	Temperature Range:	0°C – 85°C
Capacity Range, L:	35 – 50 – 65 – 80 – 100	Capacity Range, L:	35 – 50 – 65 – 80 – 100
Energy Class (EU):	C	Energy Class (EU):	C
Operation Frequency:	50 Hz & 60 Hz	Operation Frequency:	50 Hz & 60 Hz
Turbo Function:	No	Turbo Function:	No
Heating Element:	Stainless Steel*	Heating Element:	Stainless Steel*
Protection:	Over Heating Anti Corrosion High Pressure	Protection:	Over Heating Anti Corrosion High Pressure Voltage Fluctuations Freezing Dry Operation

Turbo Product

Yes

\*Copper heating element is used only in cylindrical design with bottom mechanic control.

# Cylindrical Design

## Bottom Mechanical Control

### General Features:

- Immersion type heating element → Long Life Copper



### Specialties

- Fast water heating with 2000 W heating element
- High-tech. green polyurethane insulation (Non - fluorine)
- High-pressure endurance for tank reliability (Tested at 24 Bar)
- Anti-corrosion tank protection
  - Titanium enameled
  - Magnesium anode

**VESTEL**



### Bottom Control Mechanic



User Friendly



Energy Saver



Certified



# Cylindrical Design Mechanical Control

## General Features:

- User Friendly Control Panel
- Immersion type heating element → Long Life Stainless Steel

## Specialties

- Fast water heating with 2000 W heating element
- High-tech. green polyurethane insulation (Non - fluorine)
- High-pressure endurance for tank reliability (Tested at 24 Bar)
- Anti-corrosion tank protection
  - Titanium enameled
  - Magnesium anode

**VESTEL**



**Cylindrical  
Mechanic**



User Friendly



Energy Saver



Certified





# Cylindrical Design Digital Control

## General Features:

- User Friendly Control Panel
- Immersion type heating element → Long Life Stainless Steel

## Specialties

- Fast water heating with 2000 W heating element
- High-tech. green polyurethane insulation (Non - fluorine)
- High-pressure endurance for tank reliability (Tested at 24 Bar)
- Anti-corrosion tank protection:
  - Titanium enameled
  - Magnesium anode
- Extra energy saving by dynamic eco mode
- Smart Clean Function
- Low stand-by electricity consumption
- Voltage Fluctuation Protection
- Freezing Protection
- Dry Operation Protection



**Cylindrical  
Digital**



User Friendly



Energy Saver



Certified



# Square Design Mechanical Control

## General Features:

- User Friendly Control Panel
- Immersion type heating element → Long Life Stainless Steel

## Specialties

- Fast water heating with 2000 W heating element
- High-tech. green polyurethane insulation (Non - fluorine)
- High-pressure endurance for tank reliability (Tested at 24 Bar)
- Anti-corrosion tank protection
  - Titanium enameled
  - Magnesium anode

**VESTEL**



**Square  
Mechanic**



User Friendly



Energy Saver



Certified



# Square Design Digital Control

## General Features:

- User Friendly Control Panel
- Immersion type heating element → Long Life Stainless Steel

## Specialties

- Fast water heating with 2000 W heating element
- High-tech. green polyurethane insulation (Non - fluorine)
- High-pressure endurance for tank reliability (Tested at 24 Bar)
- Anti-corrosion tank protection:
  - Titanium enameled
  - Magnesium anode
- Extra energy saving by dynamic eco mode
- Smart Clean Function
- Low stand-by electricity consumption
- Voltage Fluctuation Protection
- Freezing Protection
- Dry Operation Protection



**Square  
Digital**



User Friendly



Energy Saver



Certified





# Square Design Digital Control - Boost

Capacity Range	35L	50L	65L	80L	100L
Digital	✓	✓	✓	✓	✓
Boost Digital	N/A	✓	✓	✓	✓

## Specialties

- Boost provides the fastest heating with **(1800+1200) 3000W heating element.**
- High-tech. green polyurethane insulation (Non - fluorine)
- High-pressure endurance for tank reliability (Tested at 24 Bar)
- Anti-corrosion tank protection: → Titanium enameled  
→ Magnesium anode
- Extra energy saving by dynamic eco mode
- Smart Clean Function
- Low stand-by electricity consumption
- Voltage Fluctuation Protection
- Freezing Protection
- Dry Operation Protection



## Square Digital - Boost



User Friendly



Energy Saver



Certified

Reaches the desired temperature in  
a **40%** shorter time.



# Container Loads - Cylindrical



Old Cylindrical Models					
	35L	50L	65L	80L	100L
Container loads 20'	176	132	116	112	88
Container loads 40'	384	288	248	240	192
Container loads 40'HQ	384	356	288	240	192
Truck	432	404	324	272	216

Current Cylindrical Models					
	35L	50L	65L	80L	100L
Container loads 20'	192	144	120	120	96
Container loads 40'	400	300	258	250	200
Container loads 40'HQ	400	375	300	250	200
Truck	680	560	420	350	340

The product size has been optimized according to the container size to increase the container quantity and decrease the unit cost of the transportation. The loading quantity for a truck has been improved up to %57 as depending on the water capacity.

# Container Loads - Square



Square Models					
	35L	50L	65L	80L	100L
Container loads 20'	171	132	114	88	88
Container loads 40'	368	288	248	192	192
Container loads 40'HQ	384	360	288	240	192
Truck	432	405	324	270	216

The product size has been optimized according to the container size to increase the container quantity and decrease the unit cost of transportation. The loading quantity for a truck has been improved up to %40 as depending on the water capacity.





# WATER HEATER TECHNOLOGIES

Vestel Water Heaters stand out with their innovative and sleek design as well as their technological and user-friendly features and offer high-segment products.

[MORE INFO](#)



# Low Leakage Risk

Vestel water heaters have high technology tank production process.  
The tank has only two pieces to weld and one welding line.

**Conventional  
Water Heaters**



3 pieces, 290 cm welding length



**VESTEL**

2 pieces, 120 cm welding length



**Available in ALL MODELS**



# Endurance Against the High Pressure

Thanks to

- **Special production method of tank**
  - **Thicker tank wall**
  - **High quality tank material**

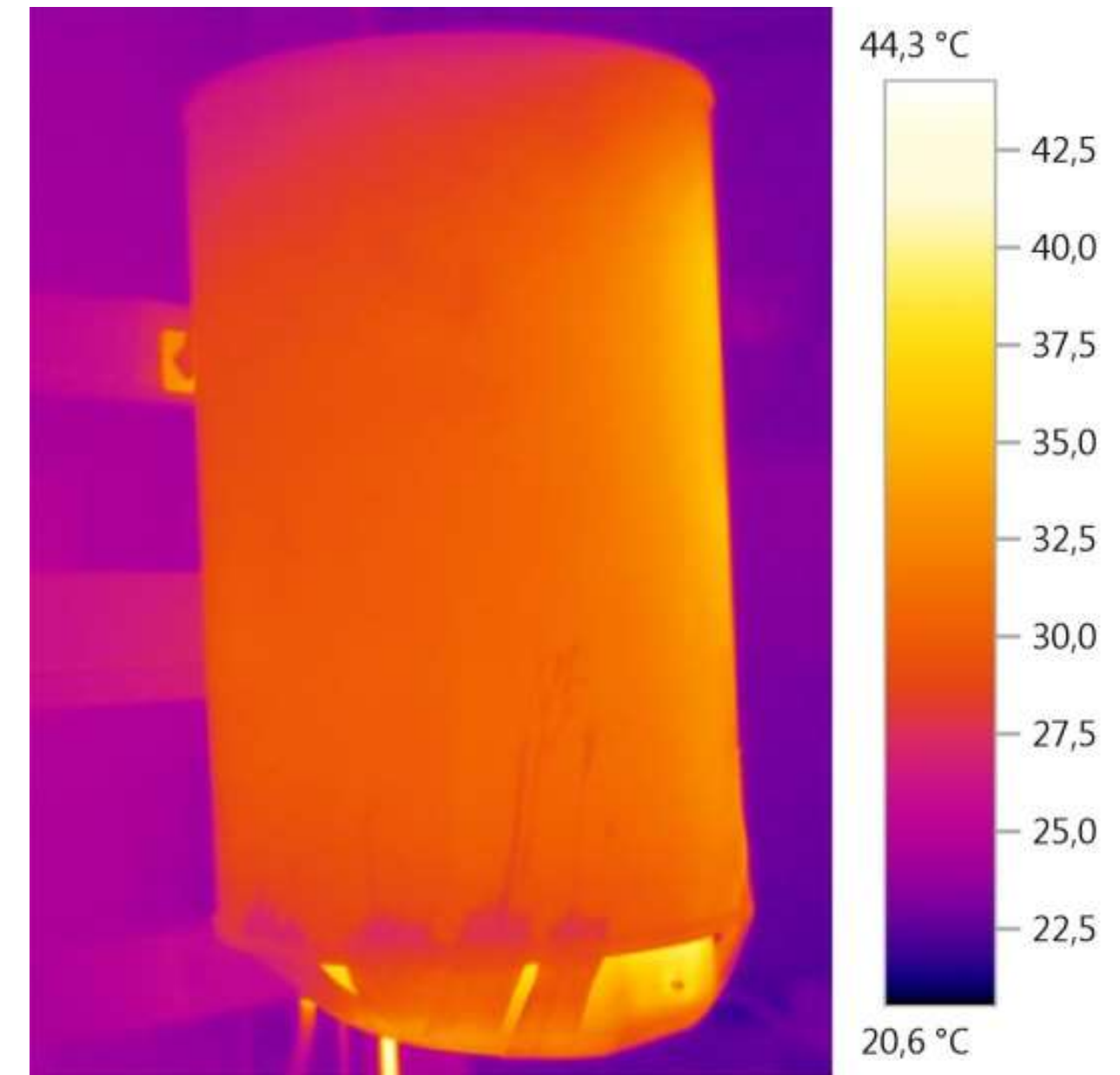
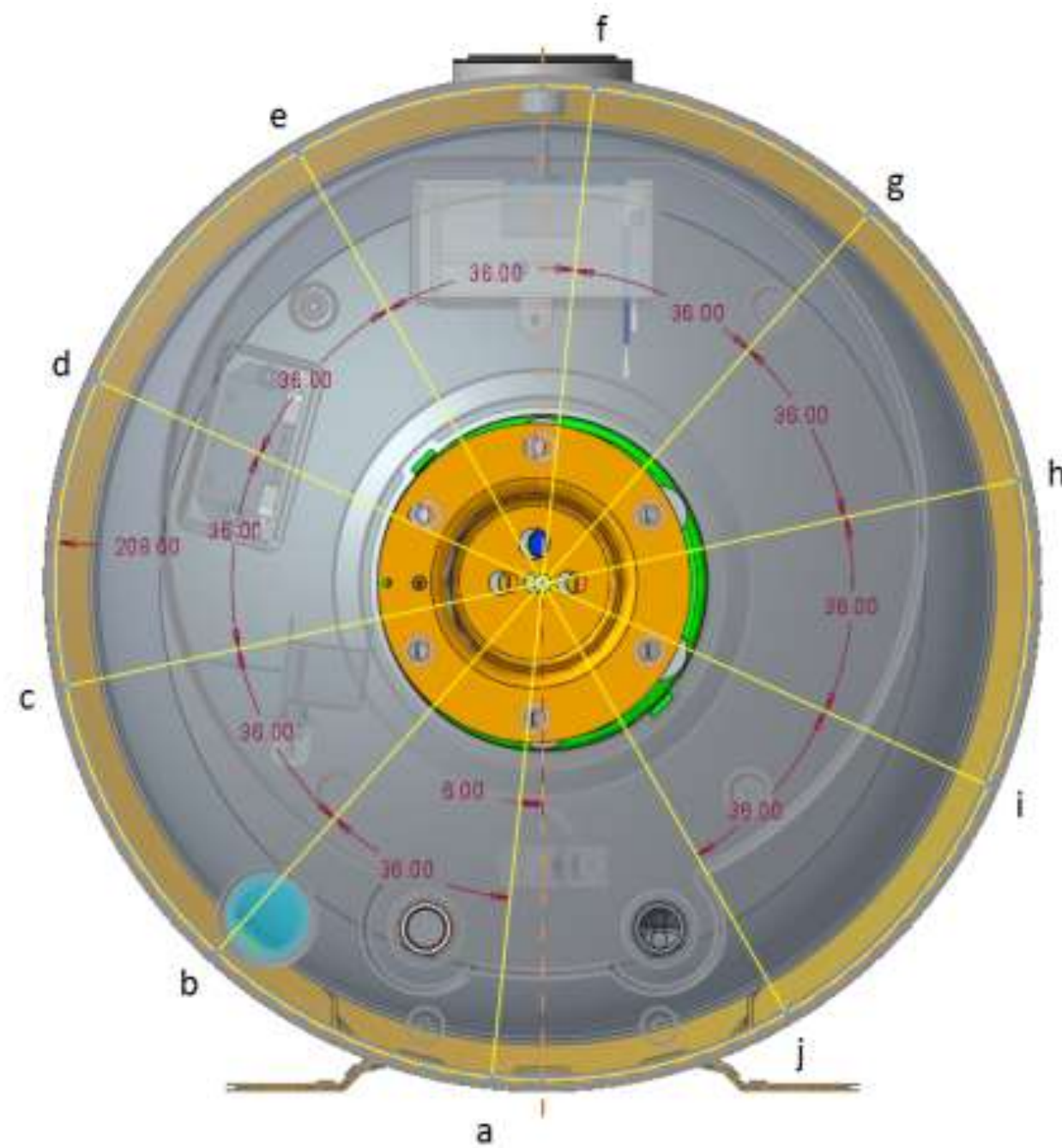
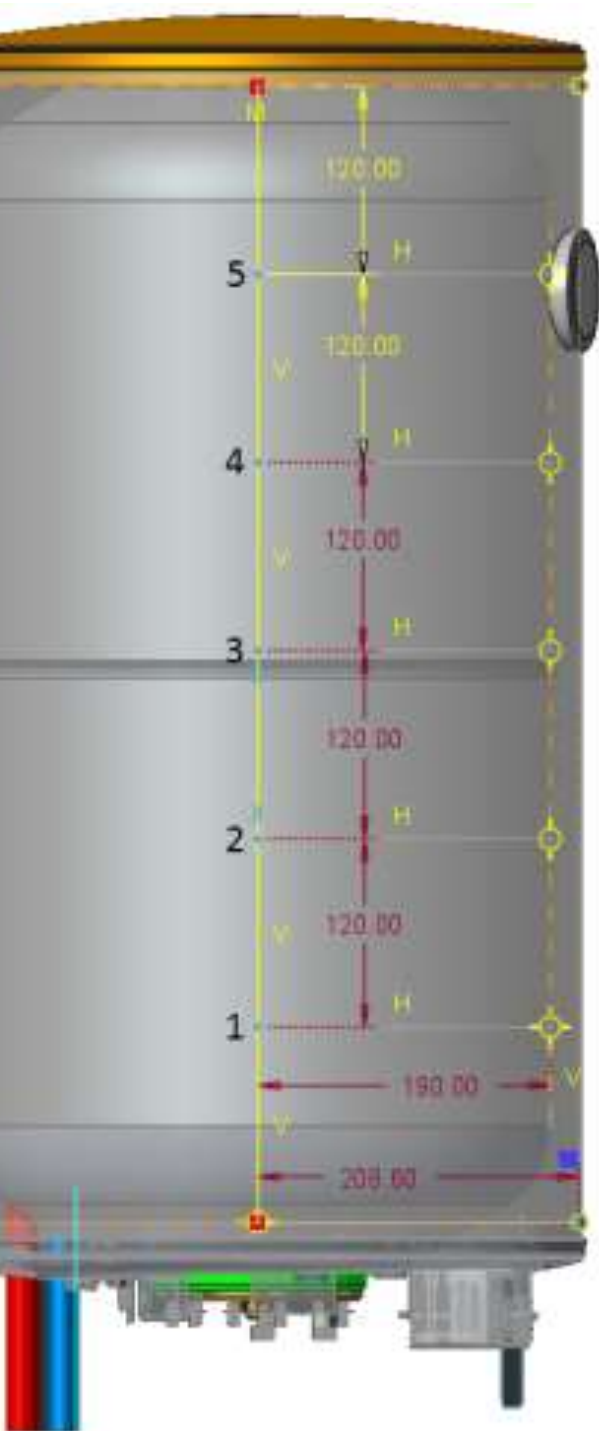
Vestel water heaters have finest endurance against the very high pressure.



Available in ALL MODELS

**VESTEL**

# Uniform Distribution of Insulation



Vestel water heaters can save %10 energy under favour of uniform distribution of the insulation.



# Overheat Prevention



If the water temperature starts to rise to temperatures that may harm the user, the resistance is turned off by a thermostat.

# Safety Valve



The working pressure may increase due to high mains water pressure. If the mains water pressure is higher than the allowable pressure, the safety valve starts to drip water.



\*Smart Clean function is available for only digital models.



# Smart Clean Function

If the water temperature is not over 65 °C for a week, microorganisms could be formed. In such case, the smart clean function will be activated automatically and resistance will heat water to 65°C and wait for 1 hour at that temperature to eliminate microorganisms.



\* All models have ECO function. Only digital models have Dynamic ECO Function.

# Dynamic Eco Function



**10% Extra**  
Energy Saving

Dynamic Eco Function is activated and “EC” icon is showed when the user adjust the temperature as 55 °C.

If there is no water used for a specific time, the set temperature is decreased by 1 °C to save energy. This procedure continues for each specific time range. If there is water usage in that specific time range, the set temperature remains 55°C.



\*Available for only digital models.

## Dry Operation Protection



If the level of water in the WH decreases for any reason, a small amount of water in the boiler will quickly heat up while the resistance is activated. In these cases, the protection algorithm is activated to prevent the water heater from being damaged.



## Freeze Prevention

Supply water temperature may decrease depending on the outdoor temperature. If the supply water temperature decreases below 5°C the resistance activates rapidly and heats the water up to 16°C against the risk of freezing.

# Low Voltage Protection

In some regions, fluctuations in the mains voltage may occur throughout the day. This fluctuations affects the heating element, electronic card and other electrical components.

If the voltage drops to **160V or below**, Vestel water heaters protect themselves and stop working until the voltage values reach the suitable value for work.



Available in Digital MODELS





## Different Colour Combinations

**VESTEL**



## Different Accessory Options





# THANK YOU

VT Product Management

---