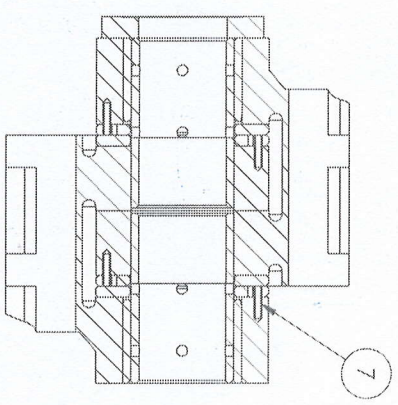
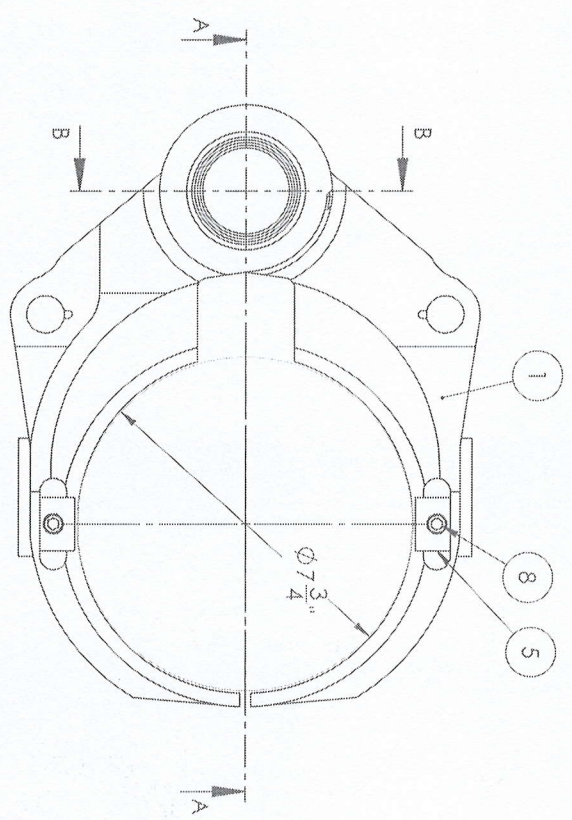
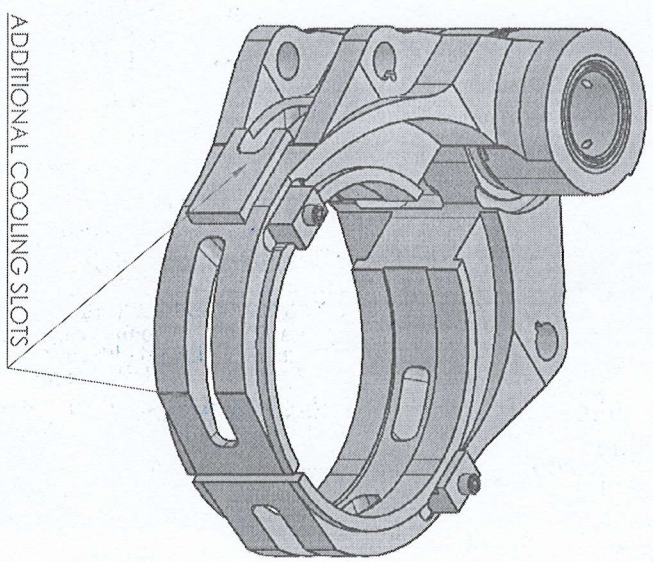


SECTION A-A
SCALE 1 : 3



SECTION B-B
SCALE 1 : 3

ITEM NO.	PART NUMBER	DESCRIPTION	QTY.
1	WYE 2610-5	5 1/2 SG MOULD HOLDER	2
2	WYE 1421	OUTER BUSH	2
3	WYE 1422	INNER BUSH	2
4	WYE 1714	THRUST WASHER	4
5	WYE-1322	LOCATING BLOCK	2
6	WYE-1506	1/2" UNC HINGE SCREW	2
7	P48	SELOC PIN 3/16 X 3/4"	4
8	V1211-0312-1000	5/16 x 1 SHCS	2
9	WYE-1723	WEAR WASER	1



Scale 1:1

Sheet 1 of 1

*** DO NOT SCALE ***

Customer	LATTIMER LTD	Drawn	MV	Date	20/12/2022
Material	SEE BOM	Approved	RL	Date	20/12/2022
Desc	5 1/2" SG No.5 BLOW MOULD HOLDER	ISSUE	01	Update No.	-
DWG No	WYE-2610D-CH				

DIMENSIONS ARE IN MILLIMETRES UNLESS OTHERWISE STATED

TOLERANCES UNLESS SPECIFIED

0	± 0.5mm	Angular	± 2°
0.0	± 0.25mm		
0.00	± 0.12mm		

The drawing is confidential and is the sole property of Lattimer. It is to be kept confidential and not to be copied or disclosed in any form without the prior written permission of Lattimer Ltd.

LATTIMER

