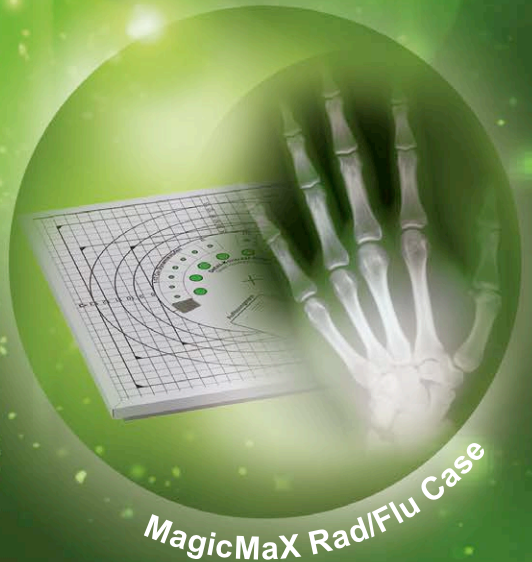
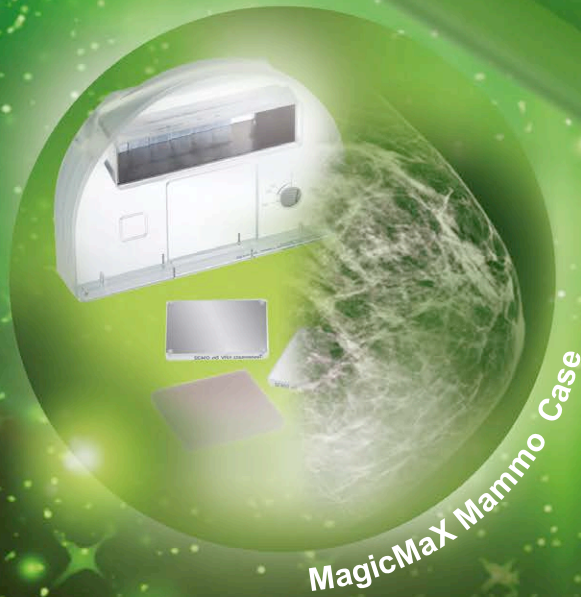


# MagicMaX *Universal*



**EXCEPTIONAL - INNOVATIVE  
ONE INTEGRATED SOLUTION**

**FOR QUALITY CONTROL IN MEDICAL IMAGING**



Europe  
Middle East  
Africa

# MagicMaX Universal

## EXCEPTIONAL · INNOVATIVE · ONE INTEGRATED SOLUTION

### YOUR HIGH-END MULTIMETER SOLUTION SOLVING ALL YOUR NEEDS IN BEAM VERIFICATION.

- **ALL-IN-ONE DEVICE** for all X-ray modalities
- **ADVANCED SOFTWARE** provides a fast total overview as well as comprehensive expert level detail and reporting
- **PLUG & PLAY** system allows fast and seamless workflow within ONE minute setup time



### CONNECTION TO

- Solid State Detector RQA for Radiography and Fluoroscopy
- Solid State Detector RQM for Mammography
- Current Probe
- Illuminance Detector



Connection to second dose detector allows simultaneously measuring both entrance and exit dose

### COMPUTER OPERATING SYSTEM

- Operating system: Microsoft® Windows®\*
- Pentium processor (or equivalent), minimum 1.6 GHz
- 1 GB RAM
- 600 MB free hard disk space
- DirectX 9.29.1973 or later
- Internet Explorer version 6 or later

\*MagicMaX supports the following operating systems: Windows® XP (32 bit), Windows® Vista, Windows® 7, Windows® 8 (64 bit), Windows® 10

### CONNECTION TO

- Ionisation Chamber DCT 10
- Multidetector XR
- Multidetector XM



# MagicMaX Universal CASES

# MagicMaX Universal FAMILY

YOUR ALL-IN-ONE SOLUTION KEEPING YOU MOBILE.

## MagicMaX Universal FULL QA KIT

- MagicMaX Universal
- Test phantoms for all X-ray modalities
- Multidetector radiography / fluoroscopy XR and mammography XM
- MagicMaX Current Probe
- Illuminance detector
- Ionization chamber for CT



## MagicMaX Universal RAD/FLU CASE

- MagicMaX Universal
- Multidetector radiography / fluoroscopy XR
- MagicMaX Current Probe
- Test phantom for radiography and fluoroscopy
- Illuminance detector



## MagicMaX Universal MAMMO CASE

- MagicMaX Universal
- Multidetector mammography XM
- Test phantom PASMAM C
- MagicMaX Current Probe
- Illuminance detector



## MagicMaX Universal CT CASE

- MagicMaX Universal
- CT phantom for adults & pediatric
- Ionization chamber for CT
- Illuminance detector



## MagicMaX Universal CASE

- MagicMaX Universal
- Multidetector radiography / fluoroscopy XR and mammography XM
- MagicMaX Current Probe
- Illuminance detector
- Ionization chamber for CT



All components shown are also available as a single solution.

## IONIZATION CHAMBER DCT10-MM

- For CT application
- High sensitivity carbon pencil chamber

## ILLUMINANCE DETECTOR

- Light output measurements of image intensifiers and viewing boxes

## CURRENT PROBE

- Unique invasive and non invasive measurements of the tube current



## MULTIDETECTOR XR

- For radiography and fluoroscopy
- Measuring values: kV<sub>p</sub>, PPV, HVL, dose, dose rate, dose per pulse, exposure time and wave form

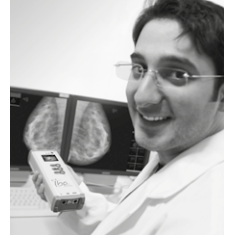
## MULTIDETECTOR XM

- For mammography
- Measuring values: kV<sub>p</sub>, PPV, HVL, dose, dose rate, dose per pulse, exposure time and wave form

# IMAGE QUALITY QUALITY ASSURANCE

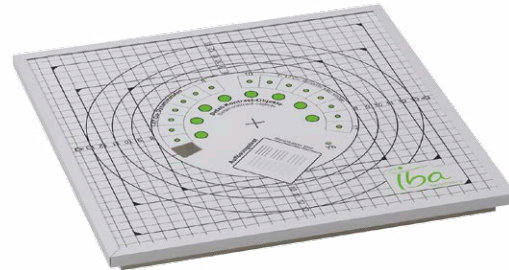


# DISPLAY QUALITY QUALITY ASSURANCE



## TEST DEVICE PRIMUS

- Digital + conventional Radiography and Fluoroscopy
- Parameters and determination:
  - Dynamic range
  - Linepair resolution performance
  - Contrast resolution
  - Limitation of the radiation field



## SPOT-LUMINANCE-METER & COLORIMETER LXchroma

- Precise low level luminance measurements
- Spectral colormetric measurement with the 256-BI-Tec-Sensor
- Large display for easy reading
- New compact design integrates stray light tube, a camera and a display
- Inclination sensor for precise user alignment



## PMMA CT-PHANTOM

- Innovative 3-part nested PMMA phantom for Computed Tomography
- Designed for CTDI determination of pediatric & adult protocols



## SPOT-LUMINANCE-METER LXcan

- Both distance and contact measurement
- Easy targeting with a built-in camera
- Real-time measurement
- Alignment and adjustment of measurement with large backlight display



## TEST DEVICE PASMAM

- Base phantom (40mm) with Al-step wedge
- Structure plate (6mm) with rotatable lead line resolution test (5,6,7,8 & 10lp/mm)
- 4 rows of metal balls for check of missed tissue at chest wall side
- Different inserts based on technical as well as biomedical test



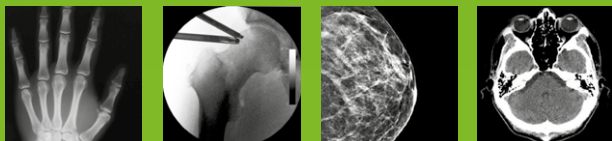
## ILLUMINANCE DETECTOR LX-LS

- Recommended accessory for LXcan / LXchroma for additional illuminance measurements
- The ambient light of image display devices
- At viewing boxes





## MagicMaX Full-QA for all radiology imaging modalities!



### Radiography + Fluoro + Mammo + CT

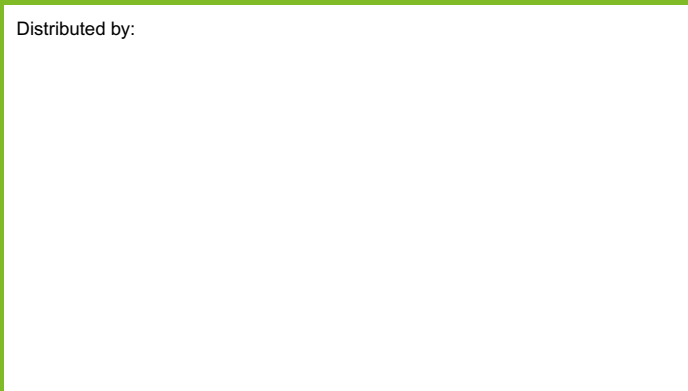
- **High Precision:** high time resolution of 0.1 ms
- **All Modalities in One Device:** 21 kV – 160 kV (full detector flexibility, twin detector port)

### MagicMaX in Clinical Application

“ We are using the MagicMaX in our institution since 2010. The MagicMaX supported us in our daily routine and has been serviceable in special circumstances. It was found to be very flexible and reliable in its usability. Especially the access to the voltage, HVL and wave form in addition to the dosage information was found to be helpful in several cases. In addition the MagicMaX was proven to be a viable tool in professional training settings. ”

DR. M. BOROWSKI  
MEDICAL PHYSICS EXPERT AT THE KLINIKUM BRAUNSCHWEIG, GERMANY

Distributed by:



Depicted product images may differ from the actual scope of delivery.  
Images and technical specifications are subject to change without prior notice.

### DISCOVER MORE ONLINE



See MagicMaX  
at YouTube  
(ibadosimetry)



[iba-dosimetry.com](http://iba-dosimetry.com)

### Europe, Middle East, Africa

IBA Dosimetry GmbH  
Bahnhofstr. 5  
90592 Schwarzenbruck, Germany  
Tel.: +49 9128 607 0  
Fax: +49 9128 607 10

[dosimetry-info@iba-group.com](mailto:dosimetry-info@iba-group.com)