

Panasonic
BUSINESS

Document Scanner
KV-SL3066
KV-SL3056

Double the Efficiency with Dual Scanning



High-Speed Scanning

65 ppm / 130 ipm (KV-SL3066)
45 ppm / 90 ipm (KV-SL3056)

* A4, Portrait, 300 dpi, Binary/Colour

ADF / Flatbed Scanning

Single Touch Scanning

Multi-Crop

ICP Express*

* Panasonic original software



ADF/Flatbed Scanning

Documents set at once in ADF and flatbed can be scanned consecutively by a single operation and the scanned data is saved as one file. In manual mode of flatbed scanning, scanning starts automatically just by closing the cover.

ADF

- 100 sheets
- Simultaneous Duplex Scanning



Flatbed

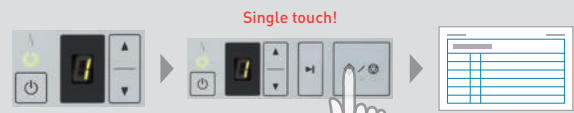
- Booklets
- Damaged Papers



Single Touch Scanning

Easy scanning with a single press of the button.

* Previously set jobs must be registered from the PC to the scanner. Up to 9 job settings can be registered.



Select the registered scan settings from the display.

Press the button.

Scanning is easy, even when settings are complicated.

Multi-Crop

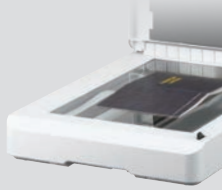
Place various sized documents on the flatbed and scan them all at once, then crop whatever parts you need.



Scan all together.



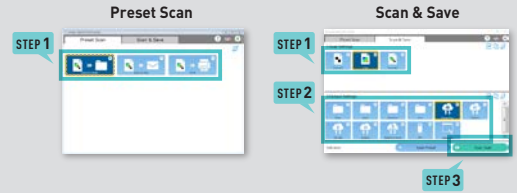
Crop each one.



ICP Express (Image Capture Plus Express)

A software with intuitive operation, and simple, easy-to-understand GUI makes changing settings and use simplified.

Example of scanning setting:
Preset Scan, Scan & Save



Specifications

Scanning Face	Duplex & Flatbed
Scanning Method	ADF: 1 line colour CIS (Front and back sides), Black or White Background Flatbed: 1 line colour CIS, Black or White Background (reversible)
Scanning Resolution	100 dpi - 600 dpi (1 dpi step) and 1,200 dpi (interpolated) Optical: 300/600 dpi (Automatic switch)
Scanning Speed*1 A4/Portrait Binary/Colour (200 dpi, 300 dpi)	KV-SL3066 ADF: Simplex: 65 ppm, Duplex: 130 ipm Flatbed: 1.5 sec./page KV-SL3056 ADF: Simplex: 45 ppm, Duplex: 90 ipm Flatbed: 1.5 sec./page
Double-Feed Detection	Ultrasonic (The length of documents that can be detected is 70 mm or more.)
Image Compression	MH, MMR, JPEG
Binary Mode Halftone	Dither, Error Diffusion
ADF Document	Size Manual feeding: 48 x 54 mm (1.9 x 2.1 in.) to 216 mm x No limited (8.5 in. x No limited) (Using "Long Paper") Automatic feeding: 48 x 54 mm (1.9 x 2.1 in.) to 216 x 356 mm (8.5 x 14 in.) Image size: 200 dpi or less: 48 x 54 mm (1.9 x 2.1 in.) to 216 x 5,588 mm (8.5 x 220 in.) 300 dpi or less: 48 x 54 mm (1.9 x 2.1 in.) to 216 x 5,461 mm (8.5 x 215 in.) 400 dpi or less: 48 x 54 mm (1.9 x 2.1 in.) to 216 x 4,064 mm (8.5 x 160 in.) 600 dpi or less: 48 x 54 mm (1.9 x 2.1 in.) to 216 x 2,700 mm (8.5 x 106.3 in.) Thickness Paper: 0.04 - 0.5 mm (1.6 - 19.7 mils) ISO Card: 0.76 mm (30.0 mils) Embossed card up to 1.4 mm (0.055 in.) Bound documents*2: 2.6 mm (102.4 mils) Note: 1 mil = 0.001 in.
Flatbed Document	Weight 20 - 413 g/m ² (5 - 110 lbs.) Size Maximum: 216 x 297 mm (8.5 x 11.69 in.) Thickness 30 mm (limit of Flatbed cover closing) 3 mm (limit of cover close detection)
Feed Tray Capacity	100 sheets: 80 g/m ² (21 lbs.)
Supported Operating System	Windows Vista® SP2 (32 bit/64 bit) Windows® 7 (32 bit/64 bit), Windows 8 (32 bit/64 bit) Windows 8.1 (32 bit/64 bit), Windows 10 (32 bit/64 bit) Windows Server® 2003 SP2 (32 bit/64 bit) Windows Server® 2003 R2 SP2 (32 bit/64 bit) Windows Server® 2008 SP2 (32 bit/64 bit) Windows Server® 2008 R2 SP1 (64 bit) Windows Server® 2012 (64 bit), Windows Server® 2016 (64 bit) Mac OS X 10.8 - 10.11, macOS 10.12 - 10.14, Red Hat® Enterprise Linux® Desktop 6/7, Ubuntu® 12/14/15/16/17/18/19

Interface	USB 3.1 Gen1 (backward compatible)
External Dimensions (W X D X H)	300 x 650 x 308 mm (11.8 x 25.6 x 12.1 in.)
Weight	6.7 kg (14.8 lbs.)
Power Requirement*3	AC 220-240 V, 50/60 Hz, 0.5 A
Power Consumption	Maximum [Scanning] KV-SL3066: 40 W or less: 0.5 A KV-SL3056: 37 W or less: 0.5 A Minimum [Ready] 10 W or less Sleep 1.8 W or less Power Off 0.5 W or less
Operating Environment	Temperature: 5 °C to 35 °C (41 °F to 95 °F) Humidity: 20 % RH to 80 % RH (No dewdrop)
Storage Environment	Temperature: -10 °C to 50 °C (14 °F to 122 °F) Humidity: 8 % RH to 75 % RH (No dewdrop)
Accessories	CD-ROM: Device driver, ISIS driver software, TWAIN driver software, WIA driver software, User utility, Scan Button Setting Tool, Image Capture Plus with OCR Engine, Operating Manual, Control sheet Quick Installation Guide, Power Cord, 1.5m USB Cable (USB 3.1), Feed tray, Mixed batch card guide
Options	Roller exchange kit: KV-SS061, Roller cleaning paper: KV-SS03, Carrier Sheet: KV-SS076

*1 The scanning speed differs depending on the host computer, the operating system, the application, the measuring method, the quantity of data in the image, and the paper type. The scanning speed depends on a measuring method of Panasonic.

*2 Use the dedicated carrier sheet.

*3 The power requirement differs depending on the country/area.

Trademarks and registered trademarks

- ENERGY STAR and the ENERGY STAR mark are registered U.S. marks.
- ISIS is a registered trademark or trademark of Open Text Corporation.
- Windows, Windows Vista and Windows Server are either registered trademarks or trademarks of Microsoft Corporation in the United States and/or other countries.
- Mac, OS X and macOS are trademarks of Apple Inc., registered in the U.S. and other countries.
- Linux is a registered trademark or a trademark of Linus Torvalds in the United States and other countries.
- Red Hat and Red Hat Enterprise Linux are registered trademarks or trademarks of Red Hat, Inc. in the United States and other countries.
- Ubuntu is a registered trademark or a trademark of Canonical Ltd. in the United States and other countries.
- All other brand or product names are the property of their respective holders.

This product is designed to reduce hazardous chemical substances in accordance with the RoHS directive.

- All photographs in this brochure are simulated.
- Weights and dimensions are approximate.
- Specifications are subject to change without notice.
- These products may be subject to export control regulations.



As an ENERGY STAR® partner, Panasonic has determined that this product meets the ENERGY STAR guidelines for energy efficiency. KV-SL3066 Only.



DISTRIBUTED BY :

Panasonic

Document Scanner: <https://panasonic.net/cns/office/products/scanner/>

Printed in Japan MG-SCNL031EN 1910NSP/ZZZ-U7