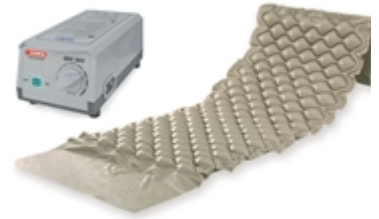




GIMA

BUBBLE AIR MATTRESS + COMPRESSOR (28564+28565)

Code: 28566
Category: Intensive care anti-decubitus mattresses
Unit of sale: 1 kit
Minimum order: 1
Type: Medical device
Class: I
NSIS: 2398249
CND: V080701
EAN13: 8023279285666



- Description:**
- **BUBBLE MATTRESS**
Designed for the treatment and prevention of pressure sore stage I in short-term and domiciliary therapies. The PVC mattress is composed of 130 7 cm-high bubble cells, particularly comfortable. Fixable to bed by extra flaps on both top and bottom side. Cold-resistant -30 degrees.
Flaps length: 50+50 cm (top + bottom).
 - **PUMP SYSTEM**
Special silent pump for an excellent pressure regulation by a knob on the front panel. It can be hung to any kind of hospital bed frame by means of two adjustable hooks. For use with bubble or alternating cell mattresses.
- Technical Specifications:**
- Bubble mattress:**
- Total size: 200 x 90 x 7 cm
 - Cell height: 7 cm (2.7")
 - Material: PVC
 - Thickness: 0.32 mm
 - Number of cells: 130
 - Suitable for persons up to: 135 kg
- Pump system:**
- Size: 25 x 12 x h 10 cm
 - Operating voltage: 220 V, 50 Hz
 - Working pressure: 40-100 mmHg
 - Air output: 6-7 liter/min
 - Cycle time: 6 min
 - Plastic casing: Taiwan chimei ABS
 - TUV-CE IEC/EN60601-1; 60601-1-2