

UNIVERSAL SUTURES

"HEALING BEYOND COMFORT"



UNISUR
Lifecare Pvt. Ltd.

Sutures
Mesh
Bone Wax

AN ISO & CE CERTIFIED SURGICAL SUTURES AND MESH MANUFACTURING COMPANY
We Manufacture complete range of Surgical Sutures, Hernia Mesh & Bonewax

Welcome to Unisur Lifecare Pvt. Ltd.

Quality sutures define us. They rather differentiate us in the market. Because we believe that when it comes to surgery nothing can be left to chance and there can be no room for compromises either.

Based in Bangalore, India we use highly sophisticated and advanced equipments for manufacturing and packing sutures. So is the process designed and operated by Unisur Lifecare Pvt. Ltd., highly professional and dedicated technical and non-technical manpower. The quality sutures we manufacture cater to a wide range of surgeries varying from Urology, Ophthalmology, Gynecology, Orthopedics, Neurology, Laparoscopy, Wound care and Cardiac Care. Our sutures invariably conform to the standards of UNITED STATES PHARMACOPEIA, better known as USP.

Established in the year 2011, we have made our mark in the domain of Manufacturing, Supplying and Exporting of all kinds of Sterile and Non Sterile Surgical Sutures & Surgical Mesh. Our products are a cut above the rest due to their non-reactive nature, cost-effectiveness and great strength.

Absorbable Surgical Suture



Nonabsorbable Surgical Suture



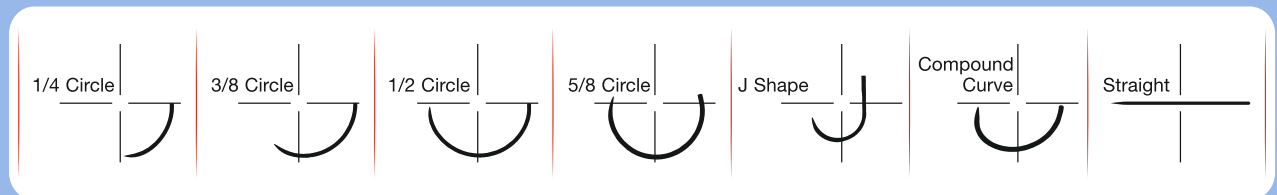
Sterile Surgical Mesh



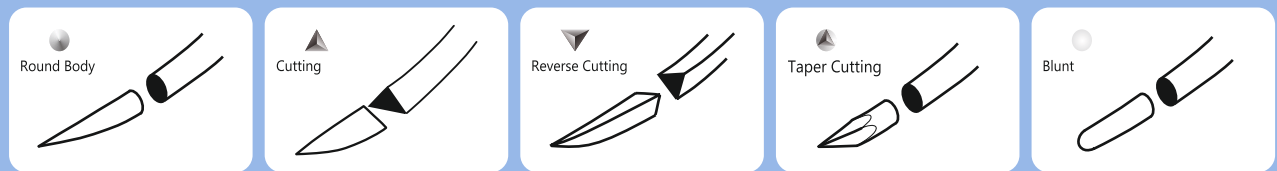
Sterile Bone Wax



Needle Shape



Needle Type:

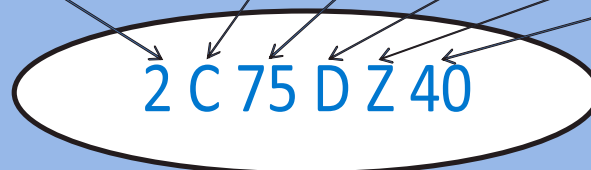


International Coding Pattern

Code 1	Product	Code 2	USP Size	Code 3	Code 4	Needle Curvature	Code 5	Needle Type	Code 6
1	Braided & Coated Polyglycolic Acid Undyed	A	3	SUTURE LENGTH in cm	C	3/8 Circle	Z	Round Body / Taper Point	NEEDLE LENGTH in mm
2	Braided & Coated Polyglycolic Acid	B	2		D	1/2 Circle	Y	Cutting	
3	Monofilament Polyamide (Nylon)	C	1		A	Straight	X	Reverse Cutting	
4	Catgut Chromic	D	0		E	5/8 Circle	K	Taper Cutting	
5	Black Braided Silk	E	2-0					T	Trocar Point
6	Braided Polyester	F	3-0					R	Blunt Point
7	Catgut Plain	G	4-0					S	Spatula
8	Monofilament Polypropylene	H	5-0						
9	Monofilament Polydioxanone	I	6-0						
10	Braided & Coated Polyglactin 910	J	7-0						
11	Monofilament Polyglecaprone 25	K	8-0						
12	Braided & Coated Polyglactin 910 Undyed								

Example:

Braided & Coated Polyglycolic Acid	Size 1	75cm	1/2 Circle	Round Body	40mm
------------------------------------	--------	------	------------	------------	------





UNIGLYDE

Braided and coated Polyglycolic acid
Synthetic Absorbable Suture (U.S.P)

A UNIVERSAL SUTURE



www.universalsutures.com

UNIGLYDE

Braided & Coated Polyglycolic Acid
Absorbable Surgical Suture U.S.P.



UNIGLYDE - Braided & Coated Polyglycolic Acid Suture is an absorbable, sterile, synthetic surgical suture, composed of homopolymers of Glycolide (100%). UNIGLYDE is also available undyed.

Braided & Coated Polyglycolic Acid Suture meets all the requirements as per United States Pharmacopeia for Absorbable Surgical suture (Synthetic)

In-house needle manufacturing provides you the better needles with optimum sharpness which finally delivers smooth riding on tissues during suturing.

Indications of Polyglycolic Acid Suture

Polyglycolic Acid suture is indicated for use in general soft tissue approximation and/or ligation, including use in ophthalmic procedures, but not for use in cardiovascular or neurological tissues.

- Smooth Surface provides no tissue trauma
- Secure Knot holding capacity
- Best suture for critical wound support
- Provides Best tissue support even after smaller diameter
- Hydrolytic absorption ensures no tissue reaction

Additional Information:

Characteristics	:	Synthetic Absorbable Surgical Suture
Type	:	Braided
Material	:	100% Polyglycolic Acid synthetic absorbable braided surgical suture
Coating	:	Polycaprolactone & calcium stearate
Color	:	Violet
Support	:	28 to 30 days
Absorption	:	Absorption takes place through hydrolysis completely in 70 to 90 days.
Strength	:	75% tensile strength is retained for 14 days and 50% till 21 days.
USP Range	:	6/0 – 2
Sterilization	:	EO (Ethylene Oxide)
Shelf Life	:	5 Years
Product Characteristics	:	Excellent tensile strength, Excellent knot tying, Minimum tissue reaction
Packaging	:	In aluminium foil packages with or without needle
Needle Type	:	Round bodied, cutting edge, taper point, straight, blunt point
MFG. LIC No	:	MFG/MD/2020/000109
OEM. LIC No	:	N. Code: KA/DEVICE/MFG/MD/2020/000109

UNIGLYDE

Braided & Coated Polyglycolic Acid
Absorbable Surgical Suture U.S.P.



Code No.	SUTURE		NEEDLE DESCRIPTION
	USP SIZE	LENGTH	
S 2613	2-0	150 cm	Without Needle
S 2613MDT	2-0	180 cm	Without Needle
S 2614	0	150 cm	Without Needle
S 2614MDT	0	180 cm	Without Needle
S 2615	1	150 cm	Without Needle
S 2615MDT	1	180 cm	Without Needle
S 2777MDT/18 0 F	2-0	180 cm	Without Needle
S 2777MDT F	2-0	50 cm	Without Needle
N 2228	2	90 cm	1/2 Circle Round Bodied 45mm
N 2228VS	2	110 cm	1/2 Circle Round Bodied 45mm
N 2303	5-0	45 cm	1/2 Circle Round Bodied 16mm
N 2304	4-0	70 cm	1/2 Circle Round Bodied 20mm
N 2305	4-0	70 cm	1/2 Circle Round Bodied 16mm
N 2317	2-0	90 cm	1/2 Circle Round Bodied 30mm
N 2317DA	2-0	140 cm	1/2 CRB 30mm & 1/2 CTC 30mm Double Armed
N 2319	1	90 cm	1/2 Circle Taper Cutting 36mm OB Needle
N 2338	0	90 cm	1/2 Circle Round Bodied 30mm
N 2341	2-0	70 cm	1/2 Circle Round Bodied 30mm
N 2342	0	70 cm	1/2 Circle Round Bodied 30mm
N 2343	1	20 cm	1/2 Circle Round Bodied 30mm Heavy
N 2344	0	20 cm	1/2 Circle Round Bodied 30mm Heavy
N 2345	2-0	90 cm	1/2 Circle Round Bodied 40mm
N 2346	0	90 cm	1/2 Circle Round Bodied 40mm
N 2346A	0	45 cm	1/2 Circle Round Bodied 40mm
N 2346AA	0	20 cm	1/2 Circle Round Bodied 40mm
N 2346DA	0	140 cm	1/2 CRB 40mm & 1/2 CTC 40mm Double Armed
N 2346DA/180	0	180 cm	1/2 CRB 40mm & 1/2 CTC 40mm Double Armed
N 2346VS	0	110 cm	1/2 Circle Round Bodied 40mm
N 2347	1	90 cm	1/2 Circle Round Bodied 40mm Heavy
N 2347A	1	45 cm	1/2 Circle Round Bodied 40mm Heavy

UNIGLYDE

Braided & Coated Polyglycolic Acid
Absorbable Surgical Suture U.S.P.



Code No.	SUTURE		NEEDLE DESCRIPTION
	USP SIZE	LENGTH	
N 2347AA	1	20 cm	1/2 Circle Round Bodied 40mm Heavy
N 2347VS	1	110 cm	1/2 Circle Round Bodied 40mm Heavy
N 2347DA	1	140 cm	1/2 CRB 40mm & 1/2 CTC 40mm Double Armed
N 2347DA/160	1	160 cm	1/2 CRB 40mm & 1/2 CTC 40mm Double Armed
N 2347DA/180	1	180 cm	1/2 CRB 40mm & 1/2 CTC 40mm Double Armed
N 2350	1	90 cm	1/2 Circle Reverse Cutting 40mm
N 2359	1	70 cm	1/2 Circle Round Bodied 40mm Heavy
N 2361	0	45 cm	1/2 Circle Taper Cutting 40mm Heavy
N 2362	1	45 cm	1/2 Circle Taper Cutting 40mm Heavy
N 2363	1	70 cm	1/2 Circle Taper Cutting 40mm Heavy
N 2364	1	90 cm	1/2 Circle Taper Cutting 40mm Heavy
N 2364VS	1	110 cm	1/2 Circle Taper Cutting 40mm Heavy
N 2382	2-0	90 cm	1/2 Circle Reverse Cutting 40mm
N 2401	3-0	45 cm	3/8 Circle Cutting 22mm
N 2402	3-0	70 cm	3/8 Circle Cutting 19mm
N 2407 (Undyed)	3-0	70 cm	3/8 Circle Reverse Cutting 26mm
N 2421	1	90 cm	1/2 Circle Reverse Cutting 40mm OR needle
N 2421DA- OR	1	140 cm	1/2 CRB 40mm & 1/2 CRC 40mm OR needle
N 2422	0	90 cm	1/2 Circle Reverse Cutting 40mm
N 2437	3-0	70 cm	1/2 Circle Round Bodied 20mm
N 2438	1	90 cm	1/2 Circle Reverse Cutting 50mm Heavy
N 2442	5-0	45 cm	3/8 Circle Cutting 16mm
N 2448	1	100 cm	1/2 Circle Round Bodied 50mm Heavy
N 2465	4-0	45 cm	5/8 Circle Cutting 16mm
N 2471	3-0	45 cm	3/8 Circle Cutting 16mm
N 2472	3-0	90 cm	1/2 Circle Cutting 22mm
N 2473	2-0	70 cm	5/8 Circle Round Bodied 27mm
N 2493	5-0	45 cm	3/8 Circle Reverse Cutting 12mm
N 2494	4-0	45 cm	3/8 Circle Reverse Cutting 12mm
N 2495	3-0	45 cm	3/8 Circle Reverse Cutting 12mm

UNIGLYDE

Braided & Coated Polyglycolic Acid
Absorbable Surgical Suture U.S.P.



Code No.	SUTURE		NEEDLE DESCRIPTION
	USP SIZE	LENGTH	
N 2511	2-0	90 cm	1/2 Circle Taper Cutting 30mm
N 2511A	2-0	45 cm	1/2 Circle Taper Cutting 30mm
N 2511AA	2-0	20 cm	1/2 Circle Taper Cutting 30mm
N 2512	0	90 cm	1/2 Circle Taper Cutting 30mm
N 2512A	0	160 cm	1/2 Circle Taper Cutting 30mm
N 2513	1	230 cm	1/2 Circle Taper Cutting 30mm
N 2513A	1	300 cm	1/2 Circle Taper Cutting 30mm
N 2513AA	1	20 cm	1/2 Circle Taper Cutting 30mm
N 2515	3-0	45 cm	1/2 Circle Taper Cutting 17mm
N 2516	3-0	90 cm	1/2 Circle Taper Cutting 36mm
N 2517	2-0	90 cm	1/2 Circle Taper Cutting 40mm
N 2518	0	90 cm	1/2 Circle Taper Cutting 40mm
N 2518VS	0	110 cm	1/2 Circle Taper Cutting 40mm
N 2534	0	90 cm	1/2 Circle Reverse Cutting 36mm OR Needle
N 2546	0	70 cm	1/2 Circle Round Bodied 40mm
N 2825A	0	35 cm	1/2 Circle Reverse Cutting 23mm
N 2826	1	70 cm	1/2 Circle Reverse Cutting 23mm
N 2826A	1	35 cm	1/2 Circle Reverse Cutting 23mm
N 2944	4-0	70 cm	3/8 Circle Reverse Cutting 16mm
N 945 (Undyed)	2-0	90 cm	1/2 Circle Round Bodied 36mm
N 946 (Undyed)	0	90 cm	1/2 Circle Round Bodied 36mm
N 2347DA/180N	1	180 cm	1/2 Circle Round Bodied 50mm Heavy Double Armed
N 2437DA	3-0	70 cm	3/8 Circle Round Bodied 22mm Double Armed
N 2306	4-0	70 cm	3/8 Circle Cutting 16mm
N 2304VS	4-0	20 cm	1/2 Circle Round Bodied 20mm
N 2511A-N	2-0	45 cm	3/8 Circle Reverse Cutting 45mm
N 2517N	2-0	90 cm	3/8 Circle Reverse Cutting 45mm
N 2518N	0	90 cm	1/2 Circle Taper Cutting 45mm
N 2478	2	90 cm	1/2 Circle Reverse Cutting 40mm OR NEEDLE
N 2347DA/180 RB	1	180 cm	1/2 Circle Round Bodied 40mm Double Armed

UNIGLYDE

Braided & Coated Polyglycolic Acid
Absorbable Surgical Suture U.S.P.



Code No.	SUTURE		NEEDLE DESCRIPTION
	USP SIZE	LENGTH	
2H75DZ15	5-0	75 cm	1/2 Circle Round Body 15mm
2H75DZ16	5-0	75 cm	1/2 Circle Round Body 16mm
2H75DZ17	5-0	75 cm	1/2 Circle Round Body 17mm
2H75DZ20	5-0	75 cm	1/2 Circle Round Body 20mm
2H75DX16	5-0	75 cm	1/2 Circle Reverse Cutting 16mm
2H75DX20	5-0	75 cm	1/2 Circle Reverse Cutting 20mm
2G75DZ16	4-0	75 cm	1/2 Circle Round Body 16mm
2G75DZ17	4-0	75 cm	1/2 Circle Round Body 17mm
2G75DZ20	4-0	75 cm	1/2 Circle Round Body 20mm
2G75DX16	4-0	75 cm	1/2 Circle Reverse Cutting 16mm
2G75DX20	4-0	75 cm	1/2 Circle Reverse Cutting 20mm
2F75DZ16	3-0	75 cm	1/2 Circle Round Body 16mm
2F75DZ20	3-0	75 cm	1/2 Circle Round Body 20mm
2F75DZ26	3-0	75 cm	1/2 Circle Round Body 26mm
2F75DX16	3-0	75 cm	1/2 Circle Reverse Cutting 16mm
2F75DX20	3-0	75 cm	1/2 Circle Reverse Cutting 20mm
2E75DZ20	2-0	75 cm	1/2 Circle Round Body 20mm
2E75DZ26	2-0	75 cm	1/2 Circle Round Body 26mm
2E75DZ30	2-0	75 cm	1/2 Circle Round Body 30mm
2E75DZ40	2-0	75 cm	1/2 Circle Round Body 40mm
2E75DZ48	2-0	75 cm	1/2 Circle Round Body 48mm
2E75DX20	2-0	75 cm	1/2 Circle Reverse Cutting 20mm
2E75DX26	2-0	75 cm	1/2 Circle Reverse Cutting 26mm
2E70CX36	2-0	70 cm	3/8 Circle Reverse Cutting 36mm
2D75DZ26	0	75 cm	1/2 Circle Round Body 26mm
2D90DZ40	0	90 cm	1/2 Circle Round Body 40mm
2D75DZ48	0	75 cm	1/2 Circle Round Body 48mm
2D75DZ64	0	75 cm	1/2 Circle Round Body 64mm
2D75DX26	0	75 cm	1/2 Circle Reverse Cutting 26mm
2C75DZ20	1	75 cm	1/2 Circle Round Body 30mm

UNIGLYDE

Braided & Coated Polyglycolic Acid
Absorbable Surgical Suture U.S.P.



Code No.	SUTURE		NEEDLE DESCRIPTION
	USP SIZE	LENGTH	
2H75DX15	5-0	75 cm	1/2 Circle Reverse Cutting 15mm
2H75DZ15	5-0	75 cm	1/2 Circle Round Body 15mm
2H75DX16	5-0	75 cm	1/2 Circle Reverse Cutting 16mm
2H75DX17	5-0	75 cm	1/2 Circle Reverse Cutting 17mm
2H75DZ17	5-0	75 cm	1/2 Circle Round Body 17mm
2H75DZ16	5-0	75 cm	1/2 Circle Round Body 16mm
2H75DX20	5-0	75 cm	1/2 Circle Reverse Cutting 20mm
2H75DZ20	5-0	75 cm	1/2 Circle Round Body 20mm
2G75DZ16	4-0	75 cm	1/2 Circle Round Body 16mm
2G75DX16	4-0	75 cm	1/2 Circle Reverse Cutting 16mm
2G75DZ17	4-0	75 cm	1/2 Circle Round Body 17mm
2G75DX20	4-0	75 cm	1/2 Circle Reverse Cutting 20mm
2G75DZ20	4-0	75 cm	1/2 Circle Round Body 20mm
2G75DZ22	4-0	75 cm	1/2 Circle Round Body 22mm
2G75DZ48	4-0	75 cm	1/2 Circle Round Body 48mm
2F90DZ16	3-0	90 cm	1/2 Circle Round Body 16mm
2F75DX16	3-0	75 cm	1/2 Circle Reverse Cutting 16mm
2F75DZ16	3-0	75 cm	1/2 Circle Round Body 16mm
2F75DX20	3-0	75 cm	1/2 Circle Reverse Cutting 20mm
2F75DZ20	3-0	75 cm	1/2 Circle Round Body 20mm
2F75DZ26DA	3-0	75 cm	1/2 Circle Round Body 26mm Double Armed
2F75DZ26	3-0	75 cm	1/2 Circle Round Body 26mm
2E75DX20	2-0	75 cm	1/2 Circle Reverse Cutting 20mm
2E75DZ20	2-0	75 cm	1/2 Circle Round Body 20mm
2E75DX26	2-0	75 cm	1/2 Circle Reverse Cutting 26mm
2E75DZ26	2-0	75 cm	1/2 Circle Round Body 26mm
2E75DZ30	2-0	75 cm	1/2 Circle Round Body 30mm
2E75CX36	2-0	75 cm	3/8 Circle Reverse Cutting 36mm
2E75DZ40	2-0	75 cm	1/2 Circle Round Body 40mm
2E75DZ48	2-0	75 cm	1/2 Circle Round Body 48mm

UNIGLYDE

Braided & Coated Polyglycolic Acid
Absorbable Surgical Suture U.S.P.



Code No.	SUTURE		NEEDLE DESCRIPTION
	USP SIZE	LENGTH	
2E75CX48	2-0	75 cm	3/8 Circle Reverse Cutting 48mm
2D75DX26	0	75 cm	1/2 Circle Reverse Cutting 26mm
2D75DZ26	0	75 cm	1/2 Circle Round Body 26mm
2D90DZ40	0	90 cm	1/2 Circle Round Body 40mm
2D75DZ45	0	75 cm	1/2 Circle Round Body 45mm
2D75DZ48	0	75 cm	1/2 Circle Round Body 48mm
2D75DZ64	0	75 cm	1/2 Circle Round Body 64mm
2C75DZ20	1	75 cm	1/2 Circle Round Body 20mm
2C90CZ30	1	90 cm	3/8 Circle Round Body 30mm
2C75DZ30	1	75 cm	1/2 Circle Round Body 30mm
2C75DZ37	1	75 cm	1/2 Circle Round Body 37mm
2C90DZ40	1	90 cm	1/2 Circle Round Body 40mm
2C75DZ40	1	75 cm	1/2 Circle Round Body 40mm
2C90DZ48	1	90 cm	1/2 Circle Round Body 48mm
2C75DZ48	1	75 cm	1/2 Circle Round Body 48mm
2C75DZ64	1	75 cm	1/2 Circle Round Body 64mm
2B75DZ40	2	75 cm	1/2 Circle Round Body 40mm
2B75DZ48	2	75 cm	1/2 Circle Round Body 48mm
2B90DZ48	2	90 cm	1/2 Circle Round Body 48mm
2A75DZ48	3	75 cm	1/2 Circle Round Body 48mm



UNISUR
Lifecare Pvt. Ltd.

UNIGLYDE FAST

Braided and coated Polyglycolic acid
Synthetic Absorbable Suture (U.S.P.)



when
hurry means
comfort

www.universalsutures.com

UNIGLYDE FAST

Braided & Coated Polyglycolic Acid (Fast Absorbable)
Absorbable Surgical Suture U.S.P.



UNIGLYDE FAST - Braided & Coated Polyglycolic Acid Suture is an absorbable, sterile, synthetic surgical suture, composed of low molecular weight homopolymers of Glycolide (100%).

Braided & Coated Polyglycolic Acid Suture meets all the requirements as per United States Pharmacopeia for Absorbable Surgical suture (Synthetic)

In-house needle manufacturing provides you the better needles with optimum sharpness which finally delivers smooth riding on tissues during suturing.

Indications of Polyglycolic Acid Suture

Polyglycolic Acid (PGA Suture) suture is indicated for use in general soft tissue approximation and/or ligation, including use in ophthalmic procedures, but not for use in cardiovascular or neurological tissues.

- Smooth Surface provides no tissue trauma
- Secure Knot holding capacity
- Best suture for critical wound support
- Provides Best tissue support even after smaller diameter
- Hydrolytic absorption ensures no tissue reaction

Additional Information:

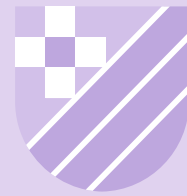
Characteristics	:	Synthetic Absorbable Surgical Suture
Type	:	Braided
Material	:	100% Polyglycolic Acid synthetic absorbable braided surgical suture
Coating	:	Polycaprolactone & calcium stearate
Color	:	Undyed
Support	:	7 to 10 days
Absorption	:	Absorption takes place through hydrolysis completely in 40 to 42 days.
Strength	:	75% tensile strength is retained for 3 days and 50% till 5 days.
USP Range	:	6/0 – 2
Sterilization	:	EO (Ethylene Oxide)
Shelf Life	:	3 Years
Product Characteristics	:	Excellent tensile strength, Excellent knot tying, Minimum tissue reaction
Packaging	:	In aluminium foil packages with or without needle
Needle Type	:	Round bodied, cutting edge, taper point, straight, blunt point
MFG. LIC No	:	MFG/MD/2020/000109
OEM. LIC No	:	N. Code: KA/DEVICE/MFG/MD/2020/000109

UNIGLYDE FAST

Braided & Coated Polyglycolic Acid (Fast Absorbable)
Absorbable Surgical Suture U.S.P.



Code No.	SUTURE		NEEDLE DESCRIPTION
	USP SIZE	LENGTH	
1H75DZ16	5-0	75 cm	1/2 Circle Round Body 16mm
1H75DZ20	5-0	75 cm	1/2 Circle Round Body 20mm
1G75DX16	4-0	75 cm	1/2 Circle Reverse Cutting 16mm
1G75DZ16	4-0	75 cm	1/2 Circle Round Body 16mm
1G75DZ19	4-0	75 cm	3/8 Circle Reverse Cutting 19mm
1G75DZ20	4-0	75 cm	1/2 Circle Round Body 20mm
1F75DZ16	3-0	75 cm	1/2 Circle Round Body 16mm
1F120DZ17	3-0	120 cm	1/2 Circle Round Body 17mm
1F75DZ17	3-0	75 cm	1/2 Circle Round Body 17mm
1F70DZ17	3-0	70 cm	1/2 Circle Round Body 17mm
1F90DZ20	3-0	90 cm	1/2 Circle Round Body 20mm
1F75DZ20	3-0	75 cm	1/2 Circle Round Body 20mm
1F75DZ26	3-0	75 cm	1/2 Circle Round Body 26mm
1E75DZ20	2-0	75 cm	1/2 Circle Round Body 20mm
1E75DZ26	2-0	75 cm	1/2 Circle Round Body 26mm
1E75DZ30	2-0	75 cm	1/2 Circle Round Body 30mm
1E75DZ36	2-0	75 cm	1/2 Circle Round Body 36mm
1D75DZ26	0	75 cm	1/2 Circle Round Body 26mm
1D70DZ26	0	70 cm	1/2 Circle Round Body 26mm
1D90DZ30	0	90 cm	1/2 Circle Round Body 30mm
1D90DZ36	0	90 cm	1/2 Circle Round Body 36mm
1D90DZ40	0	90 cm	1/2 Circle Round Body 40mm
1C90DZ30	1	90 cm	1/2 Circle Round Body 30mm
1C90DZ36	1	90 cm	1/2 Circle Round Body 36mm
1C75DZ36	1	75 cm	1/2 Circle Round Body 36mm
1C90DZ48	1	90 cm	1/2 Circle Round Body 48mm
1B100DZ48	2	100 cm	1/2 Circle Round Body 48mm



UNISUR
Lifecare Pvt. Ltd.

UNISYNTH

Braided and coated Polyglactin 910
Synthetic Absorbable Suture (U.S.P.)

A BOND FOREVER



www.universalsutures.com

UNISYNTH

Braided & Coated Polyglactin 910
Absorbable Surgical Suture U.S.P.



UNISYNTH – Braided & Coated Polyglactin 910 Suture is a synthetic absorbable sterile surgical suture composed of a copolymer made from 90% glycolide and 10% L-lactide

In-house needle manufacturing provides you the better needles with optimum sharpness which finally delivers smooth riding on tissues during suturing

Indications:

UNISYNTH Polyglactin 910 synthetic absorbable suture is indicated only for use in superficial soft tissue approximation of the skin and mucosa. The suture holds its tensile strength for approximately two to three weeks in tissue and is completely absorbed by hydrolysis within 56 to 70 days.

- Secure Knot holding capacity
- Smooth surface provides easy tissue passage
- Better Tensile Strength provides wound support upto 28 to 32 days

Best Used For:

- Uterus approximation
- Soft tissue approximation

Additional Information:

Suture Characteristics	:	Synthetic Absorbable Surgical Suture
Suture Type	:	Braided
Suture Material	:	Polyglycolide (90%)- co-lactide(10%) synthetic absorbable braided surgical suture
Suture Coating	:	Poly (glycolide-ce-L-lactide) & calcium stearate
Suture Color	:	Violet
Suture Wound Support	:	28 to 32 days
Suture Absorption	:	Absorption takes place through hydrolysis completely in 56 to 70 days.
Suture Tensile Strength	:	75% tensile strength is retained for 14 days and 50% till 21 days.
Suture USP Range	:	6/0 – 2
Sterilization	:	EO (Ethylene Oxide)
Shelf Life	:	5 Years
Product Characteristics	:	Excellent tensile strength, Excellent knot tying, Minimum tissue reaction
Suture Packaging	:	In aluminium foil packages with or without needle
Suture Needle Type	:	Round bodied, cutting edge, taper point, straight, blunt point
MFG. LIC No	:	MFG/MD/2020/000109
OEM. LIC No	:	N. Code: KA/DEVICE/MFG/MD/2020/000109

UNISYNTH

Braided & Coated Polyglactin 910
Absorbable Surgical Suture U.S.P.



Code No.	SUTURE		NEEDLE DESCRIPTION
	USP SIZE	LENGTH	
US 2317	2-0	90 cm	1/2 Circle Round Bodied 30mm
US 2317DA	2-0	140 cm	1/2 CRB 30mm & 1/2 CTC 30mm Double Armed
US 2345	2-0	90 cm	1/2 Circle Round Bodied 40mm
US 2346	0	90 cm	1/2 Circle Round Bodied 40mm
US 2346DA	0	140 cm	1/2 CRB 40mm & 1/2 CTC 40mm Double Armed
US 2346VS	0	110 cm	1/2 Circle Round Bodied 40mm
US 2228	2	90 cm	1/2 Circle Round Bodied 45mm
US 2347	1	90 cm	1/2 Circle Round Bodied 40mm Heavy
US 2359	1	70 cm	1/2 Circle Round Bodied 40mm Heavy
US 2347A	1	45 cm	1/2 Circle Round Bodied 40mm Heavy
US 2347VS	1	110 cm	1/2 Circle Round Bodied 40mm Heavy
US 2347VS+	1	120 cm	1/2 Circle Round Bodied 40mm Heavy
US 2437	3-0	70 cm	1/2 Circle Round Bodied 20mm
US 2442	5-0	45 cm	3/8 Circle Cutting 16mm
US 2443	4-0	70 cm	3/8 Circle Cutting 16mm
US 2421	1	90 cm	1/2 Circle Reverse Cutting 40mm OR Needle
US 2421A	1	45 cm	1/2 Circle Reverse Cutting 40mm OR Needle
US 2534	0	90 cm	1/2 Circle Reverse Cutting 36mm OR Needle
US 2518	0	90 cm	1/2 Circle Taper Cutting 40mm
US 2382	2-0	90 cm	1/2 Circle Reverse Cutting 40mm
US 2448	1	100 cm	1/2 Circle Round Bodied 50mm
US 2448LN	1	100 cm	1/2 Circle Round Bodied 55mm
US 2448DA/180	1	180 cm	1/2 CRB 50mm & 1/2 CTC 50mm Double Armed
US 2160DA/160	1	160 cm	1/2 CTC 40mm & 3/8 CRB 50mm Double Armed
US 2304	4-0	70 cm	1/2 Circle Round Bodied 20mm
US 2340	3-0	70 cm	1/2 Circle Round Bodied 30mm
US 2340A	3-0	45 cm	1/2 Circle Round Bodied 30mm
US 2347DA	1	140 cm	1/2 CRB 40mm & 1/2 CTC 40mm Double Armed
US 2347DA/180	1	180 cm	1/2 CRB 40mm & 1/2 CTC 40mm Double Armed
US 2347DA/180N	1	180 cm	1/2 CRB 50mm & 1/2 CTC 40mm Double Armed

UNISYNTH

Braided & Coated Polyglactin 910
Absorbable Surgical Suture U.S.P.



Code No.	SUTURE		NEEDLE DESCRIPTION
	USP SIZE	LENGTH	
US 2347VSS	1	125 cm	1/2 Circle Round Bodied 40mm Heavy
US 2350 RB	1	120 cm	1/2 Circle Round Bodied 36mm
US 2360	1	90 cm	1/2 Circle Round Bodied 40mm
US 2363	1	70 cm	1/2 Circle Taper Cutting 40mm Heavy
US 2404	2-0	90 cm	3/8 Circle Cutting 26mm
US 2438 N	1	90 cm	1/2 Circle Reverse Cutting 45mm
US 2471	3-0	45 cm	3/8 Circle Cutting 16mm
US 2516	3-0	90 cm	1/2 Circle Taper Cutting 36mm
US 2519	1	90 cm	1/2 Circle Taper Cutting 40mm
US 947 (Undyed)	1	90 cm	1/2 Circle Taper Point 36mm
US 2401	3-0	45 cm	3/8 Circle Cutting 22mm
US 2473N	2-0	90 cm	5/8 Circle Round Bodied 27mm
US 2517OB	0	90 cm	1/2 Circle Taper Cutting 36mm
US 2518DA/180	0	180 cm	1/2 Circle Taper Cutting 40mm
US 2826	1	70 cm	1/2 Circle Reverse Cutting 23mm
US 2944	4-0	70 cm	3/8 Circle Reverse Cutting 16mm
US 2347DA/180- NN	1	180 cm	1/2 CRB 40mm Heavy & 1/2 CTC 40mm Heavy 40mm Double Armed
US 2438	1	90 cm	1/2 Circle Reverse Cutting 50mm Heavy
US 2437A	3-0	70 cm	1/2 Circle Round Bodied 16mm
US 945	2-0	90 cm	1/2 Circle Round Bodied 36mm
US 2494	4-0	45 cm	3/8 Circle Reverse Cutting 12mm
US 2472	3-0	90 cm	1/2 Circle Cutting 22mm
US 946 (Undyed)	0	90 cm	1/2 Circle Round Bodied 36mm
US 2304SP	4-0	75 cm	Straight Taper Point 19mm
US 2338	0	90 cm	1/2 Circle Round Bodied 30mm
US 2347N	1	115 cm	1/2 Circle Round Bodied 40mm Heavy
US 2825	0	45 cm	1/2 Circle Reverse Cutting 23mm
US 2826A	1	35 cm	1/2 Circle Reverse Cutting 23mm
US 2831CZ	6-0	75 cm	3/8 Circle Round Bodied 13mm
US 2831RB	6-0	45 cm	3/8 Circle Round Bodied 13mm

UNISYNTH

Braided & Coated Polyglactin 910
Absorbable Surgical Suture U.S.P.



Code No.	SUTURE		NEEDLE DESCRIPTION
	USP SIZE	LENGTH	
10H75CX13	5-0	75 cm	3/8 Circle Reverse Cutting 13mm
10G75CX16	4-0	75 cm	3/8 Circle Reverse Cutting 16mm
10G70CZ16	4-0	70 cm	3/8 Circle Round Body 16mm
10G75CZ26	4-0	75 cm	3/8 Circle Round Body 26mm
10F70CX16	3-0	70 cm	3/8 Circle Reverse Cutting 16mm
10F75DZ19	3-0	75 cm	1/2 Circle Round Body 19mm
10F70DZ22	3-0	70 cm	1/2 Circle Round Body 22mm
10F75DZ22	3-0	75 cm	1/2 Circle Round Body 22mm
10F75DZ26	3-0	75 cm	1/2 Circle Round Body 26mm
10F75CZ26	3-0	75 cm	3/8 Circle Round Body 26mm
10F45CX26	3-0	45 cm	3/8 Circle Reverse Cutting 26mm
10F75DK37	3-0	75 cm	1/2 Circle Taper Cutting 37mm
10F45	3-0	6x45 cm	Without Needle
10E75DZ26	2-0	75 cm	1/2 Circle Taper Point 26mm
10E75DZ31	2-0	75 cm	1/2 Circle Taper Point 31mm
10E90DZ36	2-0	90 cm	1/2 Circle Round Body 36mm
10E75DZ36	2-0	75 cm	1/2 Circle Taper Point 36mm
10D75DZ36	0	75 cm	1/2 Circle Round Body 36mm
10D75DZ31	0	75 cm	1/2 Circle Round Body 31mm
10D90DZ40	0	90 cm	1/2 Circle Round Body 40mm
10D75DZ45	0	75 cm	1/2 Circle Taper Point 45mm
10C75DZ36	1	75 cm	1/2 Circle Round Body 36mm
10C90DZ40	1	90 cm	1/2 Circle Round Body 40mm
10C75DZ40	1	75 cm	1/2 Circle Round Body 40mm

UNISYNTH FAST

Braided and coated Polyglactin 910
Synthetic Absorbable Suture (U.S.P.)



UNISUR

Lifecare Pvt. Ltd.



When you are in
HURRY

Best use in –

Episiotomy Repair
Fast Healing Tissues
Subcutaneous approximation

www.universalsutures.com

UNISYNTH FAST

Braided & Coated Polyglactin 910 (Fast Absorbable)
Absorbable Surgical Suture U.S.P.



UNISYNTH – Braided & Coated Polyglactin 910 Suture is a synthetic absorbable sterile surgical suture composed of a low molecular weight copolymer made from 90% glycolide and 10% L-lactide.

In-house needle manufacturing provides you the better needles with optimum sharpness which finally delivers smooth riding on tissues during suturing

Indications:

UNISYNTH Polyglactin 910 synthetic absorbable suture is indicated only for use in superficial soft tissue approximation of the skin and mucosa, where only short term wound support (7-10 days) is required.

- Secure Knot holding capacity
- Smooth surface provides easy tissue passage

Best Used For:

- Uterus approximation
- Soft tissue approximation

Additional Information:

Suture Characteristics	:	Synthetic Absorbable Surgical Suture
Suture Type	:	Braided
Suture Material	:	Polyglycolide (90%)- co-lactide(10%) synthetic absorbable braided surgical suture
Suture Coating	:	Poly (glycolide-co-L-lactide) & calcium stearate
Suture Color	:	Undyed
Suture Wound Support	:	7 to 10 days
Suture Absorption	:	Absorption takes place through hydrolysis completely in 40 to 45 days.
Suture Tensile Strength	:	75% tensile strength is retained for 3 days and 50% till 5 days
Suture USP Range	:	4/0 – 2
Sterilization	:	EO (Ethylene Oxide)
Shelf Life	:	3 Years
Product Characteristics	:	Excellent tensile strength, Excellent knot tying, Minimum tissue reaction
Suture Packaging	:	In aluminium foil packages with or without needle
Suture Needle Type	:	Round bodied, cutting edge, taper point, straight, blunt point
MFG. LIC No	:	MFG/MD/2020/000109
OEM. LIC No	:	N. Code: KA/DEVICE/MFG/MD/2020/000109

UNISYNTH FAST

Braided & Coated Polyglactin 910 (Fast Absorbable)
Absorbable Surgical Suture U.S.P.



Code No.	SUTURE		NEEDLE DESCRIPTION
	USP SIZE	LENGTH	
US 2739 F	3-0	70 cm	1/2 Circle Round Bodied 30mm
US 2762DY F	2-0	90 cm	1/2 Circle Cutting 30mm Double Armed
US 2762F VS	2-0	110 cm	1/2 Circle Round Bodied 35mm
US 2777 F	2-0	140 cm	1/2 CRB 36mm & 1/2 CRC 36mm Double Armed
US 2718 F	4-0	45 cm	3/8 Circle Cutting 16mm
US 2516RB F	3-0	90 cm	1/2 Circle Round Bodied 35mm
US 2718RB F	4-0	45 cm	3/8 Circle Round Bodied 16mm CORKUM
US 2760 F	2-0	75 cm	3/8 Circle Reverse Cutting 26mm
US 2732 F	3-0	75 cm	3/8 Circle Reverse Cutting 26mm
US 2732 AF	3-0	45 cm	3/8 Circle Reverse Cutting 26mm
US 2762 FS	2-0	100 cm	1/2 Circle Taper Cutting 35mm EPICIO
US 2761 F	2-0	90 cm	1/2 Circle Round Bodied 38mm
US 2763 FS	0	100 cm	1/2 Circle Taper Cutting 35mm
US 2762 F	2-0	90 cm	1/2 Circle Taper Cutting 35mm
US 2763 F	0	90 cm	1/2 Circle Taper Cutting 35mm
US 2763 FDA	0	90 cm	1/2 Circle Taper Cutting 35mm Double Armed
US 2735A FAST	3-0	45 cm	1/2 Circle Cutting 22mm



UNIGLYDE MONO

Monofilament Polyglecaprone 25
Synthetic Absorbable Suture (U.S.P)



BEYOND HEALING

www.universalsutures.com

UNIGLYDE MONO

Monofilament Polyglecaprone 25
Absorbable Surgical Suture (Synthetic)



UNIGLYDE MONO - Polyglecaprone 25 suture is a monofilament synthetic absorbable surgical suture prepared from a copolymer of glycolide and epsilon-caprolactone. Monofilament Polyglecaprone 25 suture copolymer has been found to be non antigenic, non pyrogenic and elicits only a slight tissue reaction during absorption.

In-house needle manufacturing provides you the better needles with optimum sharpness which finally delivers smooth riding on tissues during suturing.

Indications:

Polyglecaprone 25 sutures are indicated for use in general soft tissue approximation and/or ligation, but not for use in cardiovascular or neurological tissues, microsurgery or ophthalmic surgery.

Ultimate Suture For:

- Female's skin approximation
- Subcutaneous approximation

Best Used By:

- Plastic Surgeons,
- Gynaecologists,
- Tricologists,
- General Surgeon,
- Orthopaedics

Additional Information:

Characteristics	:	Synthetic Absorbable Surgical Suture
Type	:	Monofilament
Material	:	75%poly (glycolide) – 25% co-caprolactone synthetic absorbable surgical suture
Coating	:	–
Color	:	Undyed / Violet
Wound Support	:	21 to 28 days
Absorption	:	Absorption takes place through hydrolysis completely in 90 to 120 days.
Tensile Strength	:	50% tensile strength is retained for 14 days.
USP Range	:	4/0 – 2
Sterilization	:	EO (Ethylene Oxide)
Shelf Life	:	3 Years
Product Characteristics	:	Excellent tensile strength, Excellent knot tying, Minimum tissue reaction
Packaging	:	In aluminium foil packages with or without needle
Needle Type	:	Round bodied, cutting edge, taper point, straight, blunt point
MFG. LIC No	:	MFG/MD/2020/000109
OEM. LIC No	:	N. Code: KA/DEVICE/MFG/MD/2020/000109

UNIGLYDE MONO

Monofilament Polyglecaprone 25
Absorbable Surgical Suture (Synthetic)



Code No.	SUTURE		NEEDLE DESCRIPTION
	USP SIZE	LENGTH	

Polyglecaprone 25 Undyed Codes

S 1614	0	150 cm	Without Needle
N 1205	4-0	70 cm	3/8 Circle Reverse Cutting 16mm
N 1326	3-0	70 cm	3/8 Circle Cutting 25mm PRIME
N 1326A	3-0	45 cm	3/8 Circle Cutting 25mm PRIME
N 3326	3-0	70 cm	3/8 Circle Reverse Cutting 26mm
N 1641	2-0	70 cm	1/2 Circle Round Bodied 30mm
N 1642	1-0	70 cm	1/2 Circle Round Bodied 30mm
N 1651/35	2-0	35 cm	Straight Cutting 60mm
N 3203	5-0	45 cm	3/8 Circle Reverse Cutting 13mm
N 3204	5-0	45 cm	3/8 Circle Reverse Cutting 16mm

Polyglecaprone 25 Dyed Violet Codes

N 4228M	2	90 cm	1/2 Circle Round Bodied 45mm
N 4241M	2-0	76 cm	1/2 Circle Round Bodied 30mm
N 4242M	0	76 cm	1/2 Circle Round Bodied 30mm
N 4246M	0	76 cm	1/2 Circle Round Bodied 40mm
N 4259M	1	76 cm	1/2 Circle Round Bodied 40mm
S 2214M	0	152 cm	Without Needle
S 2215M	1	152 cm	Without Needle
N 2214M	0	152 cm	1/2 Circle Round Bodied 30mm
N 2215M	1	152 cm	1/2 Circle Round Bodied 40mm
N 4226M	1	76 cm	3/8 Circle Round Bodied 45mm
N 4273M	1	76 cm	1/2 Circle Reverse Cutting 50mm
N 4245M	2-0	76 cm	1/2 Circle Round Bodied 40mm
N 4248M	1	100 cm	1/2 Circle Round Bodied 50mm Heavy
N 4255M	2-0	76 cm	1/2 Circle Cutting 30mm Heavy
N 4258M	0	76 cm	1/2 Circle Round Bodied 40mm Heavy
N 1326DY	3-0	70 cm	3/8 Circle Cutting 25mm PRIME
N 1326A DY	3-0	45 cm	3/8 Circle Cutting 25mm PRIME
N 1326A DY	3-0	45 cm	3/8 Circle Cutting 25mm PRIME
11F70EZ26DA	3-0	70 cm	5/8 Circle Round Body 26mm Double Armed



Where **Delayed Wound Support** required
Surface is as smooth as tissues provides no tissue drag during suturing



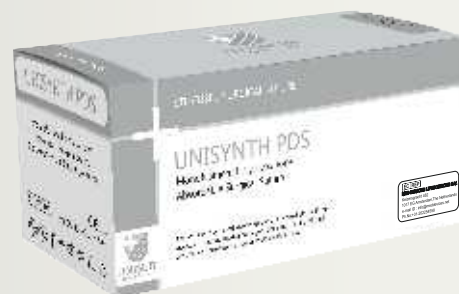
UNISYNTH PDS

Monofilament Polydioxanone
Synthetic Absorbable Suture (U.S.P)

www.universalsutures.com

UNISYNTH PDS

Monofilament Polydioxanone
Absorbable Surgical Suture (Synthetic)



UNISYNTH PDS – Monofilament Polydioxanone Suture is prepared from the polyester, poly (p-dioxanone).

Indications:

Two important characteristics describe the in vivo performance of absorbable sutures first tensile strength retention and second the absorption rate (loss of mass). UNISYNTH PDS synthetic absorbable suture has been formulated to minimize the variability of these characteristics and to provide wound support through an extended healing period.

- Where Delayed Wound Support required
- Surface as smooth as tissues; provides no tissue drag during suturing

Ultimate Suture For:

- Geriatric Surgeries
- Surgeries on Obese Patient
- Surgeries on Diabetic Patient
- Oncology Patients
- Surgeries on Patients have delayed healing strength

Best Used By:

- Joint muscles approximation
- Hard tissue approximation
- Gluteus Maximus approximation
- UNISYNTH PDS – Only hope of wound support during muscle movement

Additional Information:

Suture Characteristics	:	Synthetic Absorbable Surgical Suture
Type	:	Monofilament
Material	:	Polyester, poly-p-dioxanone
Coating	:	–
Color	:	Violet
Wound Support	:	35 to 45 days
Absorption	:	Absorption takes place through hydrolysis completely in 180 to 210 days.
Tensile Strength	:	50% tensile strength is retained for 30 days.
USP Range	:	6/0 – 2
Sterilization	:	EO (Ethylene Oxide)
Shelf Life	:	3 Years
Product Characteristics	:	Excellent tensile strength, Excellent knot tying, Minimum tissue reaction
Packaging	:	In aluminium foil packages with or without needle
Needle Type	:	Round bodied, cutting edge, taper point, straight, blunt point
MFG. LIC No	:	MFG/MD/2020/000109
OEM. LIC No	:	N. Code: KA/DEVICE/MFG/MD/2020/000109

UNISYNTH PDS

Monofilament Polydioxanone
Absorbable Surgical Suture (Synthetic)



Code No.	SUTURE		NEEDLE DESCRIPTION
	USP SIZE	LENGTH	
N 9133	2-0	70 cm	1/2 Circle Round Bodied 30mm
N 9132	3-0	70 cm	1/2 Circle Round Bodied 30mm
N 9210	1-0	70 cm	1/2 Circle Round Bodied 30mm
N 9233	1-0	70 cm	1/2 Circle Round Bodied 40mm
N 9234	1	90 cm	1/2 Circle Round Bodied 40mm
N 9248	1	90 cm	1/2 Circle Round Bodied 45mm
N 9237	3-0	70 cm	1/2 Circle Round Bodied 20mm
N 9304	4-0	70 cm	1/2 Circle Round Bodied 20mm
N 9371	1-0	90 cm	1/2 Circle Round Bodied 40mm Heavy
N 9352	1	90 cm	1/2 Circle Round Bodied 40mm Heavy
N 9262	1	150 cm	1/2 Circle Round Bodied 50mm Heavy LOOP
N 9261	0	150 cm	1/2 Circle Round Bodied 50mm Heavy LOOP
N 9221	1	90 cm	1/2 Circle Reverse Cutting 40mm OR Needle
N 9201H	5-0	70 cm	1/2 Circle Round Bodied 13mm Double Armed
N 9235SA	1	110 cm	1/2 Circle Taper Cutting 30mm
9G90DZ17	4-0	90 cm	1/2 Circle Round Bodied 17mm
9F90DZ26	3-0	90 cm	1/2 Circle Round Bodied 26mm
IH70DZ13	5-0	75 cm	1/2 Circle Round Body 13mm
IH75CX17	5-0	75 cm	3/8 Reverse Cutting 17mm
IG75DZ20	4-0	75 cm	1/2 Circle Round Body 17mm
IG75CX15	4-0	75 cm	3/8 Reverse Cutting 15mm
IF75DZ20	3-0	75 cm	1/2 Circle Round Body 20mm
IF75DZ30	3-0	75 cm	1/2 Circle Round Body 30mm
9F90DZ26	3-0	90 cm	1/2 Circle Round Body 26mm
IF75CX24	3-0	75 cm	3/8 Reverse Cutting 24mm
9F75CX25	3-0	75 cm	3/8 Circle Reverse Cutting 25mm
IE90DZ17	2-0	90 cm	1/2 Circle Round Body 17mm
IE75DZ30	2-0	75 cm	1/2 Circle Round Body 30mm
IC90DZ17	1	90 cm	1/2 Circle Round Body 17mm
IC75DZ30	1	75 cm	1/2 Circle Round Body 30mm

UNISYNTH PDS

Monofilament Polydioxanone
Absorbable Surgical Suture (Synthetic)



Code No.	SUTURE		NEEDLE DESCRIPTION
	USP SIZE	LENGTH	
9I70DZ13	6-0	70 cm	1/2 Circle Round Body 13mm
9H70DZ13	5-0	70 cm	1/2 Circle Round Body 13mm
9H75DZ13	5-0	75 cm	1/2 Circle Round Body 13mm
9H75CK17	5-0	75 cm	3/8 Circle Taper Cutting 17mm
9H75CX17	5-0	75 cm	3/8 Circle Reverse Cutting 17mm
9G75CX15	4-0	75 cm	3/8 Circle Reverse Cutting 15mm
9G90DZ17	4-0	90 cm	1/2 Circle Round Body 17mm
9G75CK17	4-0	75 cm	3/8 Circle Taper Cutting 17mm
9G75DZ17	4-0	75 cm	1/2 Circle Round Body 17mm
9G90DZ20DA	4-0	90 cm	1/2 Circle Round Body 20mm Double Armed
9G75DZ20	4-0	75 cm	1/2 Circle Round Body 20mm
9G75CX24	4-0	75 cm	3/8 Circle Reverse Cutting 24mm
9F75DZ20	3-0	75 cm	1/2 Circle Round Body 20mm
9F75CK25	3-0	75 cm	3/8 Circle Taper Cutting 25mm
9F75CX25	3-0	75 cm	3/8 Circle Reverse Cutting 25mm
9F90DZ26	3-0	90 cm	1/2 Circle Round Body 26mm
9F75DZ30	3-0	75 cm	1/2 Circle Round Body 30mm
9E90DZ17	2-0	90 cm	1/2 Circle Round Body 17mm
9E75DZ30	2-0	75 cm	1/2 Circle Round Body 30mm
9C90DZ17	1	90 cm	1/2 Circle Round Body 17mm
9C75DZ30	1	75 cm	1/2 Circle Round Body 30mm



UNISUR
Lifecare Pvt. Ltd.

UNIGUT

Catgut Chromic/ Plain
Natural Absorbable Suture (U.S.P.)



www.universalsutures.com

UNIGUT

Catgut Chromic

Absorbable Surgical Suture U.S.P.



UNIGUT - Catgut Chromic Suture is an absorbable sterile surgical gut suture composed of purified connective tissue (mostly collagen) derived from the sub mucosal fibrous layer of healthy sheep intestines. Catgut Chromic is processed to provide greater resistance to absorption, chromic catgut treated with chromic salts to delay the absorption.

Indications of Chromic catgut Suture

Chromic Suture is indicated for use in general soft tissue approximation and/or ligation, including use in ophthalmic procedures, but not for use in cardiovascular and neurological tissues.

Ultimate suture for:

- Uterus Closure
- Episiotomy Repair
- Soft Tissues approximation
- Fast healing tissues/ Muscles

Additional Information:

Suture Characteristics	:	Absorbable Surgical Suture
Type	:	Twisted
Material	:	Catgut Chromic
Color	:	Brown
Absorption	:	Absorption takes place due to enzymatic reaction in 90 to 120 days.
Tensile Strength	:	Tensile strength is retained for 14 to 21 days.
USP Range	:	5/0 – 3
Sterilization	:	EO (Ethylene Oxide)
Shelf Life	:	5 Years
Product Characteristics	:	Excellent tensile strength, Excellent knot tying, Minimum tissue reaction
Packaging	:	In aluminium foil packages with or without needle
Needle Type	:	Round bodied, cutting edge, taper point, straight, blunt point.
MFG. LIC No	:	MFG/MD/2020/000109
OEM. LIC No	:	N. Code: KA/DEVICE/MFG/MD/2020/000109

UNIGUT

Catgut Chromic

Absorbable Surgical Suture U.S.P.



Code No.	SUTURE		NEEDLE DESCRIPTION
	USP SIZE	LENGTH	
N 2214	0	152 cm	1/2 Circle Round Bodied 30mm
N 2215	1	152 cm	1/2 Circle Round Bodied 40mm Heavy
N 2216	2	152 cm	1/2 Circle Round Bodied 45mm MAYO
N 4113	2-0	76 cm	3/8 Circle Round Bodied 32mm
N 4114	0	76 cm	3/8 Circle Round Bodied 32mm
N 4123	2-0	76 cm	1/2 Circle Round Bodied 26mm
N 4124	0	76 cm	1/2 Circle Round Bodied 26mm
N 4200	2-0	76 cm	Straight Round Bodied 40mm
N 4201	3-0	76 cm	3/8 Circle Cutting 22mm
N 4204	2-0	76 cm	Straight Round Bodied 45mm
N 4205	0	76 cm	Straight Round Bodied 45mm
N 4208	2-0	76 cm	Straight Round Bodied 50mm
N 4213	0	76 cm	Straight Round Bodied 60mm
N 4216	2-0	76 cm	3/8 Circle Round Bodied 30mm
N 4217	0	76 cm	3/8 Circle Round Bodied 30mm
N 4220	2-0	76 cm	3/8 Circle Round Bodied 40mm
N 4221	0	76 cm	3/8 Circle Round Bodied 40mm
N 4225	0	76 cm	3/8 Circle Round Bodied 45mm
N 4226	1	76 cm	3/8 Circle Round Bodied 45mm
N 4227	1	100 cm	1/2 Circle Round Bodied 45mm MAYO
N 4228	2	100 cm	1/2 Circle Round Bodied 45mm MAYO
N 4229	0	100 cm	1/2 Circle Round Bodied 45mm MAYO
N 4229VS	0	110 cm	1/2 Circle Round Bodied 45mm MAYO
N 4232	2-0	76 cm	3/8 Circle Round Bodied 65mm
N 4233	0	76 cm	3/8 Circle Round Bodied 65mm
N 4237	3-0	76 cm	1/2 Circle Round Bodied 20mm
N 4237N	3-0	76 cm	1/2 Circle Round Bodied 30mm
N 4239	1	100 cm	1/2 Circle Trocar Point 40mm Heavy
N 4239A	1	76 cm	1/2 Circle Trocar Point 40mm Heavy
N 4241	2-0	76 cm	1/2 Circle Round Bodied 30mm

UNIGUT

Catgut Chromic

Absorbable Surgical Suture U.S.P.



Code No.	SUTURE		NEEDLE DESCRIPTION
	USP SIZE	LENGTH	
N 4242	0	76 cm	1/2 Circle Round Bodied 30mm
N 4244	2	100 cm	1/2 Circle Trocar Point 40mm Heavy
N 4245	2-0	76 cm	1/2 Circle Round Bodied 40mm
N 4246	0	76 cm	1/2 Circle Round Bodied 40mm
N 4248	1	100 cm	1/2 Circle Round Bodied 50mm Heavy
N 4249	2-0	76 cm	1/2 Circle Round Bodied 45mm
N 4250	0	76 cm	1/2 Circle Round Bodied 45mm
N 4255	2-0	76 cm	1/2 Circle Cutting 30mm Heavy
N 4258	0	76 cm	1/2 Circle Round Bodied 40mm Heavy
N 4259	1	76 cm	1/2 Circle Round Bodied 40mm Heavy
N 4262	1	76 cm	3/8 Circle Cutting 60mm
N 4264	0	76 cm	5/8 Circle Round Bodied 35mm
N 4267	1	76 cm	3/8 Circle Round Bodied Blunt 63mm
N 4268	5-0	76 cm	3/8 Circle Reverse Cutting 12mm
N 4272	3-0	76 cm	1/2 Circle Reverse Cutting 12mm
N 4273	1	76 cm	1/2 Circle Reverse Cutting 50mm
N 4274	3-0	76 cm	3/8 Circle Cutting 16mm
N 4275	1	152 cm	1/2 CRB 45mm & 1/2 CRC 45mm Double Armed
N 4276	0	152 cm	1/2 CRB 45mm & 1/2 CRC 45mm Double Armed
N 4277	2-0	152 cm	1/2 CRB 36mm & 1/2 CRC 36mm Double Armed
N 4278	2	100 cm	1/2 Circle Round Bodied 65mm
N 4279	0	100 cm	1/2 Circle Taper Cutting H 40mm
N 4280	4-0	76 cm	3/8 Circle Cutting 16mm
N 4281	5-0	76 cm	3/8 Circle Round Bodied 16mm
N 4281CY	5-0	76 cm	3/8 Circle Cutting 16mm
N 4295	2-0	76 cm	1/2 Circle Round Bodied 38mm
N 4296	0	76 cm	1/2 Circle Round Bodied 38mm
N 4297	1	100 cm	1/2 Circle Taper Cutting 40mm Heavy
N 4297A	1	76 cm	1/2 Circle Taper Cutting 40mm Heavy
N 4826	1	76 cm	3/8 Circle Round Bodied 45mm Double Armed

UNIGUT

Catgut Chromic

Absorbable Surgical Suture U.S.P.



Code No.	SUTURE		NEEDLE DESCRIPTION
	USP SIZE	LENGTH	
N 5048	4-0	76 cm	3/8 Circle Round Bodied 16 mm
N 4204	2-0	76 cm	Straight Round Bodied 45mm
S 2212	3-0	152 cm	Without Needle
S 2213	2-0	152 cm	Without Needle
S 2214	0	152 cm	Without Needle
S 2215	1	152 cm	Without Needle
S 2216	2	152 cm	Without Needle
S 2217	3	152 cm	Without Needle
S 2255	1	2 X 76 cm	Without Needle
4E75DZ26	2-0	75 cm	1/2 Circle Round Bodied 26 mm
4E76DZ26	2-0	76 cm	1/2 Circle Round Bodied 26 mm
4D76DZ40	0	76 cm	1/2 Circle Round Bodied 40 mm
4C76DZ40	1	76 cm	1/2 Circle Round Bodied 40 mm
4D75DZ40	0	75 cm	1/2 Circle Round Bodied 40 mm
4C75DZ40	1	75 cm	1/2 Circle Round Bodied 40 mm
7F76DZ26	3-0	76 cm	1/2 Circle Round Bodied 26 mm
7F76DZ25	3-0	76 cm	1/2 Circle Round Bodied 25 mm
7E76DZ31	2-0	76 cm	1/2 Circle Round Bodied 31 mm

UNIGUT

Catgut Plain

Absorbable Surgical Suture U.S.P.



UNIGUT - Catgut Plain Suture is a fast absorbing surgical gut suture made from a strand of collagenous material prepared from the submucosal layers of the small intestine of healthy sheep. Fast absorbing surgical gut sutures are sterile and elicit only a slight to minimal tissue reaction during absorption.

In-house needle manufacturing provides you the better needles with optimum sharpness which finally delivers smooth riding on tissues during suturing.

Indications of Plain Catgut Suture

Plain Catgut Suture is fast absorbing and intended for dermal (skin) suturing only. They should be utilized only for external knot tying procedures.

Best Used By:

- General Surgeons
- Gynaecologists
- Orthopaedics

Ultimate Suture for:

- Uterus Closure
- Episiotomy Repair
- Soft Tissues approximation
- Fast healing tissues/ Muscles

Additional Information:

Suture Characteristics	:	Absorbable Surgical Suture
Type	:	Twisted
Material	:	Catgut Plain
Color	:	Beige
Absorption	:	Plain Catgut Suture Absorption takes place due to enzymatic reaction in 60 to 70 days
Strength	:	Tensile strength is retained for 7 – 10 days.
USP Range	:	4/0 – 3
Sterilization	:	EO (Ethylene Oxide)
Shelf Life	:	5 years
Product Characteristics	:	Excellent tensile strength, Excellent knot tying, Minimum tissue reaction.
Packaging	:	In aluminum foil packages with or without needle
Needle Type	:	Round bodied, cutting edge, taper point, straight, blunt point
MFG. LIC No	:	MFG/MD/2020/000109
OEM. LIC No	:	N. Code: KA/DEVICE/MFG/MD/2020/000109

UNIGUT

Catgut Plain

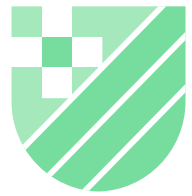
Absorbable Surgical Suture U.S.P.



Code No.	SUTURE		NEEDLE DESCRIPTION
	USP SIZE	LENGTH	
N 4238	3-0	76 cm	1/2 Circle Round Bodied 25mm
N 4269	5-0	76 cm	3/8 Circle Reverse Cutting 12mm
N 4270	4-0	76 cm	3/8 Circle Cutting 16mm
N 4271	3-0	76 cm	3/8 Circle Cutting 16mm
N 4288	3-0	76 cm	Straight Cutting 60mm
N 5007	3-0	76 cm	Straight Round Bodied 50mm
N 5010	3-0	76 cm	3/8 Circle Cutting 22mm
N 5020	3-0	76 cm	3/8 Circle Cutting 26mm
N 5033	2-0	76 cm	3/8 Circle Round Bodied 30mm
N 2003 LDL	2-0	152 cm	1/2 Circle Cutting 30mm Double Armed
S 2002	3-0	152 cm	Without Needle
S 2003	2-0	152 cm	Without Needle
S 2004	0	152 cm	Without Needle
S 2005	1	152 cm	Without Needle
S 2006	2	152 cm	Without Needle
S 2242	3-0	2 x 76 cm	Without Needle

UNILON

Monofilament Polyamide
Non-Absorbable Suture (U.S.P.)



UNISUR
Lifecare Pvt. Ltd.

THE
FINAL
TOUCH



www.universalsutures.com

UNILON

Monofilament Polyamide
Non Absorbable Surgical Suture U.S.P.



UNILON – Monofilament Polyamide (Nylon) is a non absorbable sterile surgical suture, composed of the long-chain aliphatic homo polymers Nylon 6 and Nylon 6,6.

UNILON Monofilament Polyamide Sutures are dyed black or blue to enhance visibility in tissue.

In-house needle manufacturing provides you the better needles with optimum sharpness which finally delivers smooth riding on tissues during suturing.

Indications:

Monofilament Polyamide Suture is indicated for use in general soft tissue approximation and/or ligation, including use in cardiovascular, ophthalmic and neurological procedures.

- The best material for skin approximation
- Being a monofilament with smooth surface never support bacterial growth followed by capillary action
- Uniform elasticity supports small movements results cosmetic effect
- Ultra smooth surface results negligible pain

Best Used By:

- General Surgeons,
- Gynaecologists,
- Orthopaedics

Ultimate Suture For:

- Skin Closure
- Hard Tissues approximation
- Casualty stitching

Additional Information:

Suture Characteristics	:	Non Absorbable Surgical Suture
Type	:	Monofilament
Material	:	Polyamide (Nylon)
Color	:	Black
Absorption	:	Non Absorbable
USP Range	:	6/0 – 2
Sterilization	:	EO (Ethylene Oxide)
Shelf Life	:	5 Years
Product Characteristics	:	Excellent tensile strength, Excellent knot tying, Minimum tissue reaction.
Packaging	:	In food grade folder packed in a medical grade pouch, with or without needle
Needle Type	:	Round bodied, cutting edge, taper point, straight, blunt point
MFG. LIC No	:	MFG/MD/2020/000109
OEM. LIC No	:	N. Code: KA/DEVICE/MFG/MD/2020/000109

UNILON

Monofilament Polyamide
Non Absorbable Surgical Suture U.S.P.



Code No.	SUTURE		NEEDLE DESCRIPTION
	USP SIZE	LENGTH	
N 3303	2-0	75 cm	1/2 Circle Reverse Cutting 38mm
N 3304	0	75 cm	1/2 Circle Reverse Cutting 38mm
N 3304L	0	100 cm	1/2 Circle Reverse Cutting 38mm
N 3305	1	75 cm	1/2 Circle Reverse Cutting 38mm
N 3306	2	75 cm	1/2 Circle Reverse Cutting 38mm
N 3315	5-0	35 cm	3/8 Circle Cutting 16mm
N 3315RB	5-0	75 cm	3/8 Circle Round Bodied 16mm
N 3316	5-0	75 cm	3/8 Circle Round Bodied 12mm
N 3317	5-0	70 cm	3/8 Circle Reverse Cutting 12mm
N 3318	4-0	70 cm	3/8 Circle Cutting 16mm
N 3319RB	4-0	75 cm	1/2 Circle Round Bodied 19mm
N 3320N	6-0	75 cm	3/8 Circle Reverse Cutting 13mm
N 3320RB	6-0	75 cm	3/8 Circle Round Bodied 13mm
N 3321	3-0	70 cm	3/8 Circle Cutting 16mm
N 3326N	4-0	38 cm	3/8 Circle Cutting 10mm
N 3328	3-0	70 cm	3/8 Circle Reverse Cutting 26mm
N 3328T	3-0	70 cm	3/8 Circle Reverse Cutting 26mm
N 3328A	3-0	35 cm	3/8 Circle Reverse Cutting 26mm
N 3328AT	3-0	35 cm	3/8 Circle Reverse Cutting 26mm
N 3331	6-0	70 cm	3/8 Circle Cutting 26mm
N 3336	2-0	70 cm	3/8 Circle Reverse Cutting 45mm
N 3336T	2-0	70 cm	3/8 Circle Reverse Cutting 45mm
N 3336A	2-0	35 cm	3/8 Circle Reverse Cutting 45mm
N 3336AT	2-0	35 cm	3/8 Circle Reverse Cutting 45mm
N 3336DK	2-0	110 cm	3/8 Circle Reverse Cutting 45mm
N 3338	1	100 cm	1/2 Circle Reverse Cutting 45mm Heavy
N 3338A	1	45 cm	1/2 Circle Reverse Cutting 45mm Heavy
N 3340	0 (Loop)	150 cm	1/2 Circle Round Bodied 40mm
N 3341	2-0	75 cm	1/2 Circle Round Bodied 30mm
N 3346	0	100 cm	1/2 Circle Round Bodied 40mm Heavy

UNILON

Monofilament Polyamide
Non Absorbable Surgical Suture U.S.P.



Code No.	SUTURE		NEEDLE DESCRIPTION
	USP SIZE	LENGTH	
3E75DZ26	2-0	75 cm	1/2 Circle Round Body 26mm
3E45CX26	2-0	45 cm	3/8 Circle Reverse Cutting 26mm
3F45CZ15	3-0	45 cm	3/8 Circle Round Body 15mm
3F75DZ16	3-0	75 cm	1/2 Circle Round Body 16mm
3G45CZ15	4-0	45 cm	3/8 Circle Round Body 15mm
3G75DZ22	4-0	75 cm	1/2 Circle Round Body 22mm
3H35DZ16	5-0	35 cm	1/2 Circle Round Body 16mm
3H45CX15	5-0	45 cm	3/8 Circle Reverse Cutting 15mm

UNILENE

Monofilament Polypropylene
Non-Absorbable Suture (U.S.P.)



WHEN LIFE
depends on
THREAD

www.universalsutures.com

UNILENE

Monofilament Polypropylene
Non Absorbable Surgical Suture U.S.P.



UNILENE – Monofilament Polypropylene Suture is a non absorbable sterile surgical suture composed of an isotactic crystalline stereoisomer of polypropylene, a synthetic linear polyolefin. The suture is pigmented blue to enhance visibility.

In-house needle manufacturing provides you the better needles with optimum sharpness which finally delivers smooth riding on tissues during suturing.

Indications:

Monofilament Polypropylene Suture is indicated for use in general soft tissue approximation and/or ligation, including use in cardiovascular, ophthalmic and neurological procedures.

- Smooth Surface results minimal tissue trauma
- Being a monofilament with smooth surface never support bacterial growth followed by capillary action
- Uniform elasticity supports small movements results cosmetic effect
- Ultra smooth surface results negligible pain
- Blue pigmentation enhances visibility

Best Used By:

- General Surgeons,
- Gynaecologists,
- Orthopaedics,
- Cardiac Surgeons,
- Endoscopic Surgeons

Ultimate Suture For:

- Skin Closure
- Hard Tissues approximation
- Ligament Repair
- Mesh Fixation

Additional Information:

Suture Characteristics	:	Non Absorbable Surgical Suture
Type	:	Monofilament
Material	:	Polypropylene
Color	:	Blue
Absorption	:	Non Absorbable
USP Range	:	6/0 – 1
Shelf Life	:	5 Years
Sterilization	:	EO (Ethylene Oxide)
Product Characteristics	:	Excellent tensile strength, Excellent knot tying, Minimum tissue reaction.
Packaging	:	In food grade folder packed in a medical grade pouch, with or without needle
Needle Type	:	Round bodied, cutting edge, taper point, straight, blunt point
MFG. LIC No	:	MFG/MD/2020/000109
OEM. LIC No	:	N. Code: KA/DEVICE/MFG/MD/2020/000109

UNILENE

Monofilament Polypropylene
Non Absorbable Surgical Suture U.S.P.



Code No.	SUTURE		NEEDLE DESCRIPTION
	USP SIZE	LENGTH	
N 018	3-0	70 cm	3/8 Circle Cutting 22mm
N 018RC	3-0	70 cm	3/8 Circle Reverse Cutting 22mm
N 805	0	70 cm	1/2 Circle Taper Cutting 25mm
N 806	2-0	90 cm	1/2 Circle Taper Cutting 25mm
N 807	2-0	70 cm	1/2 Circle Taper Cutting 25mm
N 822	3-0	70 cm	1/2 Circle Round Bodied 25mm Double Armed
N 822L	3-0	90 cm	1/2 Circle Round Bodied 26mm Double Armed
N 823	6-0	70 cm	3/8 Circle Slim Blade Cutting 15mm
N 825	3-0	90 cm	1/2 Circle Round Bodied 25mm
N 829	6-0	70 cm	3/8 Circle Round Bodied 13mm Double Armed
N 829NDA	6-0	90 cm	1/2 Circle Round Bodied 26mm Double Armed
N 830	0	70 cm	1/2 Circle Round Bodied 30mm Heavy
N 835	4-0	70 cm	1/2 Circle Taper Cutting 17mm Double Armed
N 838	3-0	70 cm	1/2 Circle Round Bodied 25mm
N 839	3-0	70 cm	1/2 Circle Round Bodied 30mm Heavy
N 840	1	70 cm	1/2 Circle Round Bodied 30mm Heavy
N 840A	1	100 cm	1/2 Circle Round Bodied 30mm Heavy
N 841	2-0	70 cm	1/2 Circle Round Bodied 30mm
8E75DZ30	2-0	75 cm	1/2 Circle Round Body 30mm
8K60CZ18DA	8-0	60 cm	3/8 Circle Reverse Cutting 18mm Double Armed
8J75CZ10DA	7-0	75 cm	3/8 Circle Reverse Cutting 10mm Double Armed
8I75CZ10DA	6-0	75 cm	3/8 Circle Reverse Cutting 10mm Double Armed
8H75DZ16DA	5-0	75 cm	1/2 Circle Round Body 16mm Double Armed
8H75DY16DA	5-0	75 cm	1/2 Circle Cutting 16mm Double Armed
8H75CZ12	5-0	75 cm	3/8 Circle Round Body 12mm
8G150DZ17DA	4-0	150 cm	1/2 Circle Round Body 17mm Double Armed
8G150CX19	4-0	150 cm	3/8 Circle Reverse Cutting 19mm
8F75DZ24	3-0	75 cm	1/2 Circle Round Body 24mm
8F75DZ18DA	3-0	75 cm	1/2 Circle Round Body 18mm Double Armed

UNILENE

Monofilament Polypropylene
Non Absorbable Surgical Suture U.S.P.



Code No.	SUTURE		NEEDLE DESCRIPTION
	USP SIZE	LENGTH	
N 878	6-0	45 cm	3/8 Circle Reverse Cutting 12mm
N 879	4-0	45 cm	3/8 Circle Reverse Cutting 12mm
N 880	5-0	70 cm	3/8 Circle Reverse Cutting 12mm
N 881	5-0	70 cm	3/8 Circle Round Bodied 16mm
N 882	5-0	70 cm	3/8 Circle Round Bodied 16mm Double Armed
N 882NDA	5-0	90 cm	1/2 Circle Round Bodied 26mm Double Armed
N 882CY	5-0	70 cm	3/8 Circle Cutting 16mm Double Armed
N 883	1	100 cm	1/2 Circle Reverse Cutting 45mm Heavy
N 883/RB	1	100 cm	1/2 Circle Round Bodied 45mm Heavy
N 887	3-0	70 cm	1/2 Circle Round Bodied 20mm
N 888	3-0	70 cm	Straight Cutting 60mm
N 894	0	90 cm	1/2 Circle Taper Cutting 30mm Heavy
N 896	1	100 cm	1/2 Circle Taper Cutting 30mm Heavy
N 898	2-0	70 cm	1/2 Circle Taper Cutting 17mm Double Armed
N 878VS	6-0	70 cm	3/8 Circle Reverse Cutting 12mm
N 880VS	5-0	90 cm	3/8 Circle Reverse Cutting 12mm
N 883MB	1	45 cm	1/2 Circle Reverse Cutting 40mm Heavy
N 857	4-0	90 cm	1/2 Circle Taper Cutting 17mm
8DA8F75CY24	3-0	75 cm	3/8 Circle Cutting 24mm
8E75CY26	2-0	75 cm	3/8 Circle Cutting 26mm
8E75CY20	2-0	75 cm	3/8 Circle Cutting 20mm
8D150DZ40LP	0 (Loop)	150 cm	1/2 Circle Round Body 40mm
8D100DZ40	0	100 cm	1/2 Circle Cutting 40mm
8D100DY40	0	100 cm	1/2 Circle Cutting 40mm
8C75CZ36	1	75 cm	3/8 Circle Round Body 36mm
8C150DZ40LP	1 (Loop)	150 cm	1/2 Circle Round Body 40mm
8C150DZ40	1	150 cm	1/2 Circle Round Body 40mm
8B76DY50	2	76 cm	1/2 Circle Cutting 50mm
8C100DZ40	1	100 cm	1/2 Circle Round Body 40mm

UNILENE

Monofilament Polypropylene
Non Absorbable Surgical Suture U.S.P.



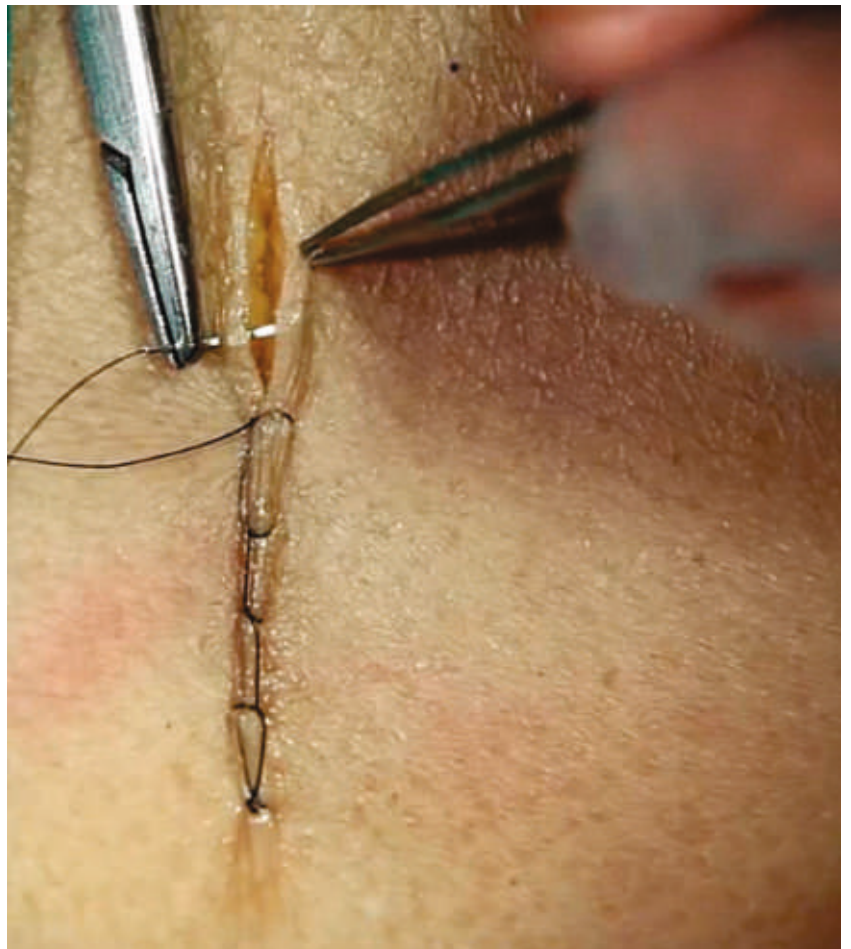
Code No.	SUTURE		NEEDLE DESCRIPTION
	USP SIZE	LENGTH	
8I90DZ13DA	6-0	90 cm	1/2 Circle Round Body 13mm Double Armed
8H90DZ16DA	5-0	90 cm	1/2 Circle Round Body 16mm Double Armed
8G90DZ17DA	4-0	90 cm	1/2 Circle Round Body 17mm Double Armed
8F90DZ26DA	3-0	90 cm	1/2 Circle Round Body 26mm Double Armed
8E90DZ20DA	2-0	90 cm	1/2 Circle Round Body 20mm Double Armed
8E90DZ26DA	2-0	90 cm	1/2 Circle Round Body 26mm Double Armed
8I90DZ13DA	6-0	90 cm	1/2 Circle Round Body 13mm Double Armed
8I75DZ13DA	6-0	75 cm	1/2 Circle Round Body 13mm Double Armed
8I75CZ13	6-0	75 cm	3/8 Circle Round Body 13mm
8I75DZ13	6-0	75 cm	1/2 Circle Round Body 13mm
8H45DZ13	5-0	45 cm	1/2 Circle Round Body 13mm
8H90DZ16DA	5-0	90 cm	1/2 Circle Round Body 16mm Double Armed
8G90DZ17DA	4-0	90 cm	1/2 Circle Round Body 17mm Double Armed
8G45DX19	4-0	45 cm	1/2 Circle Reverse Cutting 19mm
8G90DZ20	4-0	90 cm	1/2 Circle Round Body 20mm
8G75DZ30	4-0	75 cm	1/2 Circle Round Body 30mm
8F75DZ22	3-0	75 cm	1/2 Circle Round Body 22mm
8F90DZ26DA	3-0	90 cm	1/2 Circle Round Body 26mm Double Armed
8E90DZ20DA	2-0	90 cm	1/2 Circle Round Body 20mm Double Armed
8E75DX20	2-0	75 cm	1/2 Circle Reverse Cutting 20mm
8E90DZ26DA	2-0	90 cm	1/2 Circle Round Body 26mm Double Armed
8E75DZ26	2-0	75 cm	1/2 Circle Round Body 26mm
8E75CZ30	2-0	75 cm	3/8 Circle Round Body 30mm
8E90DZ30	2-0	90 cm	1/2 Circle Round Body 30mm
8D75DZ30	0	75 cm	1/2 Circle Round Body 30mm
8C90DZ30	1	90 cm	1/2 Circle Round Body 30mm
8C75DZ35	1	75 cm	1/2 Circle Round Body 35mm

UNISIL

Black Braided Silk
Non-Absorbable Suture (U.S.P.)



Some
knot
heals
better



www.universalsutures.com

UNISIL

Black Braided Silk

Non Absorbable Surgical Suture U.S.P.



UNISIL – Black Braided Silk Suture is a non absorbable, sterile, surgical suture composed of an organic protein called fibroin. This protein is derived from the domesticated species *Bombyx mori* (B. Mori) of the family Bombycidae.

UNISIL sutures are processed to remove the natural waxes and gums. UNISIL suture is dyed black and coated with a special wax mixture. UNISIL Black Braided Silk is also available in its natural color.

UNISIL Virgin silk is available in which the sericin gum is not removed and serves to hold the filaments together. In-house needle manufacturing provides you the better needles with optimum sharpness which finally delivers smooth riding on tissues during suturing.

Indications:

Black Braided Silk Suture is indicated for use in general soft tissue approximation and/or ligation, including use in cardiovascular, ophthalmic and neurological procedures.

- Highest purified protein from Species B. Mori results no tissue reaction
- Beeswax coated ultra smooth surface decrease suturing timing followed by no tissue trauma
- Unmatched Knot strength provides satisfaction to user
- USP approved dye increases visibility followed by no reaction

Best Used By:

- Orthopaedic Surgeons,
- General Surgeons,
- Gynaecologists,
- Cardiac Surgeons,
- Endoscopic Surgeons

Ultimate Suture For:

- Skin Closure
- Hard Tissues approximation
- Tendon Repair
- Muscles approximation

Additional Information:

Suture Characteristics	:	Non Absorbable Surgical Suture
Type	:	Braided
Material	:	Braided Silk
Color	:	Black
Absorption	:	Non Absorbable
USP Range	:	5/0 – 2
Sterilization	:	EO (Ethylene Oxide)
Shelf Life	:	5 Years
Product Characteristics	:	Excellent tensile strength, Excellent knot tying, Minimum tissue reaction.
Packaging	:	In food grade folder packed in a medical grade pouch, with or without needle
Needle Type	:	Round bodied, cutting edge, taper point, straight, blunt point
MFG. LIC No	:	MFG/MD/2020/000109
OEM. LIC No	:	N. Code: KA/DEVICE/MFG/MD/2020/000109

UNISIL

Black Braided Silk

Non Absorbable Surgical Suture U.S.P.



Code No.	SUTURE		NEEDLE DESCRIPTION
	USP SIZE	LENGTH	
N 5001	4-0	76 cm	3/8 Circle Cutting 16mm
N 5002	3-0	76 cm	3/8 Circle Cutting 16mm
N 5003	2-0	75 cm	1/2 Circle Reverse Cutting 38mm
N 5003RC	3-0	75 cm	3/8 Circle Reverse Cutting 16mm
N 5004	0	75 cm	1/2 Circle Reverse Cutting 38mm
N 5005	1	75 cm	1/2 Circle Reverse Cutting 38mm
N 5006	2	75 cm	1/2 Circle Reverse Cutting 38mm
N 5017	0	76 cm	3/8 Circle Round Bodied 30mm
N 5028	3-0	76 cm	3/8 Circle Reverse Cutting 26mm
N 5026	5-0	76 cm	3/8 Circle Reverse Cutting 8mm
N 5029	6-0	76 cm	3/8 Circle Round Bodied 13mm
N 5036	2-0	76 cm	3/8 Circle Reverse Cutting 45mm
N 5036A	2-0	35 cm	3/8 Circle Reverse Cutting 45mm
N 5037	0	76 cm	3/8 Circle Reverse Cutting 45mm
N 5037A	0	35 cm	3/8 Circle Reverse Cutting 45mm
N 5049	4-0	76 cm	1/2 Circle Round Bodied 16mm
N 5052	2-0	76 cm	1/2 Circle Reverse Cutting 50mm
N 5061PCM	4	76 cm	1/2 Circle Round Bodied 35mm
N 5062	1	76 cm	3/8 Circle Cutting 60mm
N 5070	3-0	76 cm	1/2 Circle Round Bodied 25mm
N 5080	5-0	76 cm	3/8 Circle Reverse Cutting 12mm
N 5082	4-0	76 cm	3/8 Circle Round Bodied 16mm
N 5083	3-0	76 cm	1/2 Circle Round Bodied 35mm
N 5086	4-0	76 cm	1/2 Circle Round Bodied 20mm
N 5087	3-0	76 cm	1/2 Circle Round Bodied 20mm
N 5090	5-0	76 cm	Straight Round Bodied 20mm
N 5096	5-0	76 cm	3/8 Circle Round Bodied 20mm
N 5098	5-0	76 cm	1/2 Circle Taper Cutting 17mm
N 5290	2-0	76 cm	Straight Cutting 60mm
N 5333	2-0	76 cm	1/2 Circle Round Bodied 30mm

UNISIL

Black Braided Silk

Non Absorbable Surgical Suture U.S.P.



Code No.	SUTURE		NEEDLE DESCRIPTION
	USP SIZE	LENGTH	
N 5333DY	2-0	76 CM	1/2 Circle Cutting 30mm
N 5334	0	76 cm	1/2 Circle Round Bodied 30mm
N 5610	2-0	76 cm	1/2 Circle Taper Cutting 17mm
N 5670	2-0	76 cm	1/2 Circle Taper Cutting 25mm
N 5001VS	4-0	90 cm	3/8 Circle Cutting 16mm
N 5002VS	3-0	90 cm	3/8 Circle Cutting 16mm
N 5085	3-0	90 cm	1/2 Circle Round Bodied 25mm
N 5332N	3-0	76 cm	1/2 Circle Round Bodied 30mm
N 5335	0	75 cm	3/8 Circle Round Bodied 25mm
N 5011	1	110 cm	1/2 Circle Taper Cutting 30mm
N 5063	1	76 cm	1/2 Circle Round Bodied 40mm Heavy
S 212	3-0	2 x 75 cm	Without Needle
S 213	2-0	2 x 75 cm	Without Needle
S 214	0	2 x 75 cm	Without Needle
S 215	1	2 x 75 cm	Without Needle
S 216	2	2 x 75 cm	Without Needle
S 217	3	2 x 75 cm	Without Needle
Black Braided Silk Non Sterile Reels			
R 826	2	25 m	6 Reels X 25 Meters
R 825	1	25 m	6 Reels X 25 Meters
R 824	0	25 m	6 Reels X 25 Meters
R 823	2-0	25 m	6 Reels X 25 Meters
R 822	3-0	25 m	6 Reels X 25 Meters
R 821	4-0	25 m	6 Reels X 25 Meters
5E75DZ30	2-0	75 cm	1/2 Circle Round Bodied 30mm
5G75CY16	4-0	75 cm	3/8 Circle Cutting 16mm
5H75CY16	5-0	75 cm	3/8 Circle Cutting
5F75CZ26	3-0	75 cm	3/8 Round Bodied
5F75CY25	3-0	75 cm	3/8 Circle Cutting
5F13X60	3-0	13x60	Without Needle

UNISIL

Black Braided Silk

Non Absorbable Surgical Suture U.S.P.



Code No.	SUTURE		NEEDLE DESCRIPTION
	USP SIZE	LENGTH	
5E75CY26	2-0	75 cm	3/8 Circle Cutting 26mm
5E75CX24	2-0	75 cm	3/8 Circle Reverse Cutting 24mm
5E12X60	2-0	12x60	Without Needle
5D75CY40	0	75 cm	3/8 Circle Cutting 40mm
5C75CY40	1	75 cm	3/8 Circle Cutting 40mm
5E13X60	2-0	13x60	Without Needle
5G75CZ16	4-0	75 cm	3/8 Circle Round Bodied 16mm
5F75DZ30	3-0	75 cm	1/2 Circle Round Bodied 30mm
5F60	3-0	60 cm	Without Needle
5D60	0	60 cm	Without Needle
5F75CX19	3-0	75 cm	3/8 Circle Reverse Cutting 19mm
5F75CX25	3-0	75 cm	3/8 Circle Reverse Cutting 25mm
5F75CX30	3-0	75 cm	3/8 Circle Reverse Cutting 30mm
5F75DX25	3-0	75 cm	1/2 Circle Reverse Cutting 25mm
5F75DZ26	3-0	75 cm	1/2 Circle Taper Point 26mm
5F75DX30	3-0	75 cm	1/2 Circle Reverse Cutting 30mm
5E75DZ22	2-0	75 cm	1/2 Circle Taper Point 22mm
5E75DZ30	2-0	75 cm	1/2 Circle Taper Point 30mm
5E75CZ30	2-0	75 cm	3/8 Circle Reverse Cutting 40mm
5D75DZ26	0	75 cm	1/2 Circle Taper Point 26mm
5D75DZ35	0	75 cm	1/2 Circle Taper Point 35mm
5F45DZ26	3-0	45 cm	1/2 Circle Taper Point 26mm
5E75DZ25	2-0	75 cm	1/2 Circle Taper Point 25mm
5D75DZ25	0	75 cm	1/2 Circle Taper Point 25mm
5F75	3-0	75 cm	Without Needle
5D60	0	60 cm	Without Needle
5F75DZ26	3-0	75 cm	1/2 Circle Round Body 26mm
5F75CX25	3-0	75 cm	3/8 Circle Reverse Cutting 25mm
5F75DX25	3-0	75 cm	1/2 Circle Reverse Cutting 25mm
5F75DX26	3-0	45 cm	1/2 Circle Reverse Cutting 26mm

UNISIL

Black Braided Silk
Non Absorbable Surgical Suture U.S.P.



Code No.	SUTURE		NEEDLE DESCRIPTION
	USP SIZE	LENGTH	
5G45DZ13	4-0	45 cm	1/2 Circle Round Body 13mm
5F75	3-0	12x75 cm	Without Needle
5F60	3-0	12x60 cm	Without Needle
5F75CX19	3-0	75 cm	3/8 Circle Reverse Cutting 19mm
5F75CX25	3-0	75 cm	3/8 Circle Reverse Cutting 25mm
5F75DX25	3-0	75 cm	1/2 Circle Reverse Cutting 25mm
5F45DZ26	3-0	45 cm	1/2 Circle Round Body 26mm
5F45DX26	3-0	45 cm	1/2 Circle Reverse Cutting 26mm
5F45DK26	3-0	45 cm	1/2 Circle Taper Cutting 26mm
5F75DZ26	3-0	75 cm	1/2 Circle Taper Point 26mm
5F75DX30	3-0	75 cm	1/2 Circle Reverse Cutting 30mm
5F75CX30	3-0	75 cm	3/8 Circle Reverse Cutting 30mm
5E75	2-0	10x75 cm	Without Needle
5E75DZ22	2-0	75 cm	1/2 Circle Round Body 22mm
5E75DK25	2-0	75 cm	1/2 Circle Taper Cutting 25mm
5E75DZ25	2-0	75 cm	1/2 Circle Taper Point 25mm
5E75DZ30	2-0	75 cm	1/2 Circle Taper Point 30mm
5E75CX40	2-0	75 cm	3/8 Circle Reverse Cutting 40mm
5D60	0	12x60 cm	Without Needle
5D75DZ25	0	75 cm	1/2 Circle Taper Point 25mm
5D75DK25	0	75 cm	1/2 Circle Taper Cutting 25mm
5D75DZ26	0	75 cm	1/2 Circle Taper Point 26mm
5D75CK30	0	75 cm	3/8 Circle Taper Cutting 30mm
5D75DZ35	0	75 cm	1/2 Circle Taper Point 35mm
5C75DZ35	1	75 cm	1/2 Circle Taper Point 35mm
5B75DZ35	2	75 cm	1/2 Circle Taper Point 35mm



UNIBOND

Braided and coated Polyester
Non Absorbable Surgical Suture (U.S.P.)

THE POWER OF RIGHT CHOICE



www.universalsutures.com

UNIBOND

Braided & Coated Polyester
Non Absorbable Surgical suture U.S.P.



UNIBOND – Braided & Coated Polyester Suture is a non absorbable, braided, sterile, surgical suture composed of Poly (ethylene terephthalate). It is prepared from fibres of high molecular weight, long-chain, linear polyesters having recurrent aromatic rings as an integral component. Braided Polyester Sutures are braided for optimal handling properties and for good visibility in the surgical field.

In-house needle manufacturing provides you the better needles with optimum sharpness which finally delivers smooth riding on tissues during suturing.

Indications:

UNIBOND - Braided & Coated Polyester Suture is indicated for use in general soft tissue approximation and/or ligation, including use in cardiovascular, ophthalmic and neurological procedures.

- High Molecular weight , Long Chain, Linear Polyester's fibers results in ultra strong suture
- Smooth Surface results easy passage through toughest tissues
- Ultra high strength offers extra support required by tissues
- Unibond – a choice of Leading Orthopaedic Surgeons

Best Used By:

- Orthopaedics
- Cardiac Surgeon
- General Surgeon

Additional Information:

Suture Characteristics	:	Non Absorbable Surgical Suture
Type	:	Braided
Material	:	Polyester
Color	:	Green / White
Absorption	:	Non Absorbable
USP Range	:	5/0 – 5
Sterilization	:	EO (Ethylene Oxide)
Shelf Life	:	5 Years
Product Characteristics	:	Excellent tensile strength, Excellent knot tying, Minimum tissue reaction.
Packaging	:	In food grade folder packed in a medical grade pouch, with or without needle
Needle Type	:	Round bodied, cutting edge, taper point, straight, blunt point
MFG. LIC No	:	MFG/MD/2020/000109
OEM. LIC No	:	N. Code: KA/DEVICE/MFG/MD/2020/000109

UNIBOND

Braided & Coated Polyester
Non Absorbable Surgical suture U.S.P.



Code No.	SUTURE		NEEDLE DESCRIPTION
	USP SIZE	LENGTH	
N 617	Green 2-0	90 cm	1/2 Circle Taper Cutting 17mm Double Armed
N 617A	White 2-0	90 cm	1/2 Circle Taper Cutting 17mm Double Armed
N 625	Green 3-0	90 cm	1/2 Circle Round Bodied 25mm Double Armed
N 632	Green 3-0	76 cm	1/2 Circle Round Bodied 25mm
N 635	Green 4-0	76 cm	1/2 Circle Taper Cutting 17mm Double Armed
N 636	Green 3-0	76 cm	1/2 Circle Taper Cutting 17mm Double Armed
N 637	Green 2-0	76 cm	1/2 Circle Taper Cutting 17mm Double Armed
N 637A	White 2-0	76 cm	1/2 Circle Taper Cutting 17mm Double Armed
N 640	Green 4-0	45 cm	Sraight Cutting 53mm Double Armed
N 643	Green .2	100 cm	1/2 Circle Taper Cutting 45mm Heavy
N 645	Green 5	100 cm	1/2 Circle Trocar Point 55mm Heavy
N 652	Green 3-0	76 cm	1/2 Circle Round Bodied 25mm Double Armed
N 669	Green 3-0	90 cm	1/2 Circle Taper Cutting 17mm Double Armed
N 672	Green 4-0	76 cm	3/8 Circle Round Bodied 16mm
N 677	Green 2-0	76 cm	1/2 Circle Taper Cutting 25mm Double Armed
N 677A	White 2-0	76 cm	1/2 Circle Taper Cutting 25mm Double Armed
N 679	Green 0	100 cm	1/2 Circle Reverse Cutting 50mm
N 680	Green1	100 cm	1/2 Circle Reverse Cutting 50mm
N 687	Green 2-0	90 cm	1/2 Circle Taper Cutting 25mm Double Armed
N 687A	White 2-0	90 cm	1/2 Circle Taper Cutting 25mm Double Armed
N 690	Green 5-0	76 cm	3/8 Circle Round Bodied 12mm Double Armed
N 691	Green 4-0	90 cm	3/8 Circle Round Bodied 12mm Double Armed
N 695	Green 4-0	90 cm	1/2 Circle Taper Cutting 17mm Double Armed
N 696	Green 5-0	76 cm	3/8 Circle Round Bodied 20mm Double Armed
N 687L	White 2-0	75 cm	1/2 Circle Taper Cutting 26mm Double Armed
6E90DZ26DA	2-0	90 cm	1/2 Circle Round Body 26mm Double Armed
6E75DZ20DAPL	2-0	75 cm	1/2 Circle Round Body 20mm Double Armed
6E75DZ20DA	2-0	75 cm	1/2 Circle Round Body 20mm Double Armed
6E75DK18DA	2-0	75 cm	1/2 Circle Taper Cutting 18mm Double Armed
6E75DK17DAPL	2-0	75 cm	1/2 Circle Taper Cutting 17mm Double Armed
6E10x75DK26DA	2-0	10X75 cm	1/2 Circle Taper Cutting 26mm Double Armed

UNIBOND

Braided & Coated Polyester
Non Absorbable Surgical suture U.S.P.



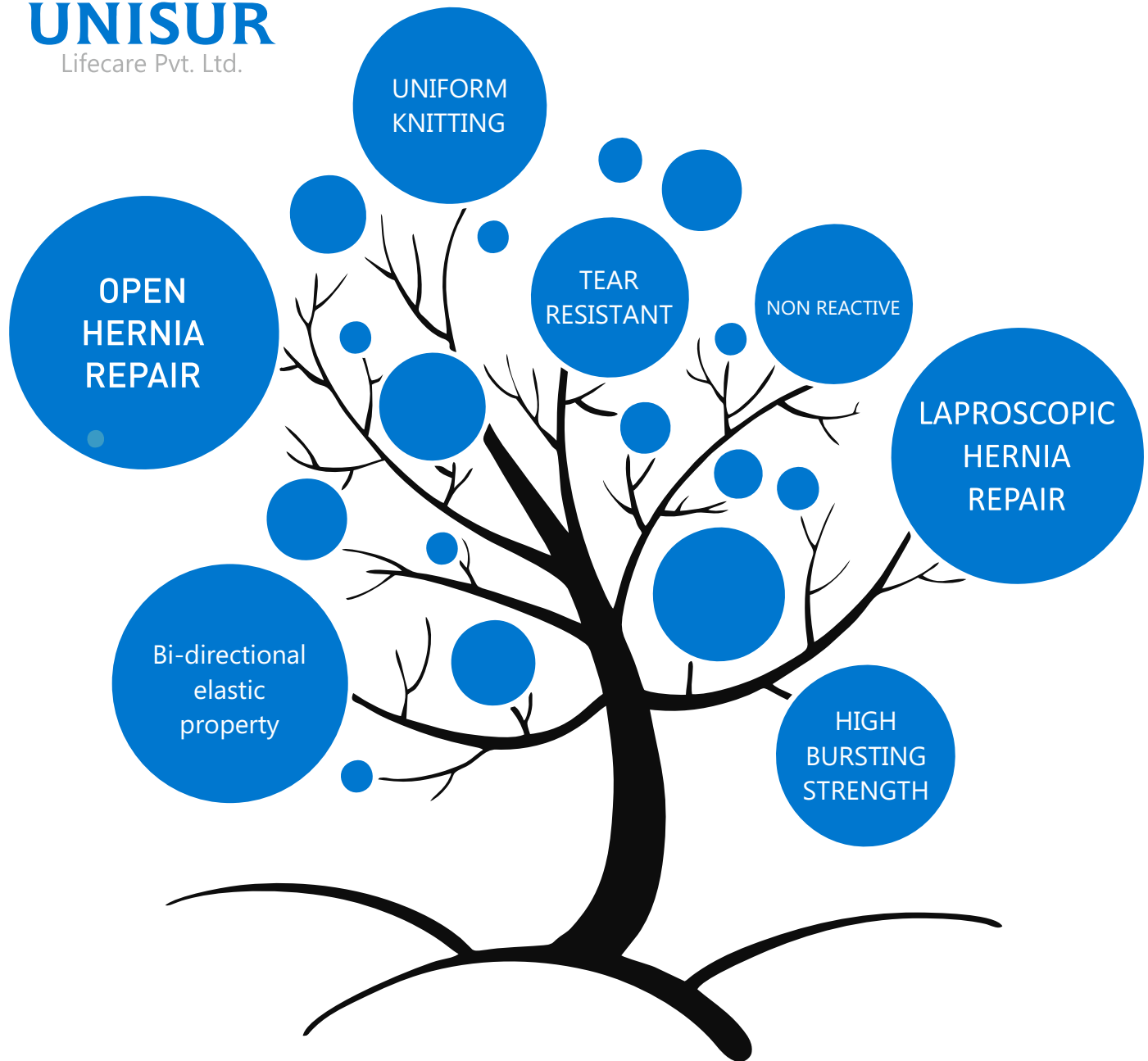
Code No.	SUTURE		NEEDLE DESCRIPTION
	USP SIZE	LENGTH	
6F75DZ22	3-0	75 cm	1/2 Circle Round Body 22mm
6G45CX15	4-0	45 cm	3/8 Circle Reverse Cutting 15mm
6G75DZ22	4-0	75 cm	1/2 Circle Round Body 22mm
6G90DZ16	4-0	90 cm	1/2 Circle Round Body 16mm
6H60DZ16	5-0	60 cm	1/2 Circle Round Body 16mm
6H75DZ17	5-0	75 cm	1/2 Circle Round Body 17mm

UNILENE MESH

Monofilament Polypropylene Mesh
Synthetic Non Absorbable Suture (U.S.P)



UNISUR
Lifecare Pvt. Ltd.



UNILENE MESH

HEALING BEYOND COMFORT

www.universalsutures.com

UNILENE MESH

Monofilament Polypropylene Mesh (Undyed)
Non Absorbable Sterile Surgical Mesh



UNILENE MESH – Monofilament Polypropylene Mesh (undyed)

Polypropylene Mesh is constructed of knitted filaments of extruded polypropylene identical in composition to that used in UNILENE Polypropylene Suture. This material, when used as a suture, has been reported to be nonreactive and to retain its strength indefinitely in clinical use.

Polypropylene Mesh is knitted by a process which interlinks each fiber junction and which provides for elasticity in both directions. This construction permits the mesh to be cut into any desired shape or size without unraveling. This bi-directional elastic property allows adaptation to various stresses encountered in the body

In-house mesh manufacturing makes us unique and potential manufacturer. UNILENE MESH is our unique product and we are available with any type, any kind of modification.

Indications of Polypropylene Mesh:

Polypropylene Mesh used for the hernia repair and other facial deficiencies that require the addition of a reinforcing or bridging material to obtain the desired surgical result.

A Hernia Mesh is a Non-Absorbable surgical mesh, used to span and reinforce traumatic or surgical wounds to provide extended support during and following wound healing. The material is neither absorbed nor is it subject to degradation or weakening by the action of tissue enzymes.

- Unilene Mesh Probably the best in kind
- An artificial wall which doesn't feel
- Latest technology with perfection provides ultra smooth surface results optimum healing
- Knitting is as per requirement of tissues results no discomfort after surgery.

Best used and ultimate mesh for:

Polypropylene Mesh best used by General Surgeon, Gynaecologist, Endoscopic Surgeons and its an Ultimate Mesh for Hernia Repair.

Additional Information:

Suture Characteristics	:	Non Absorbable Surgical Suture
Type	:	Knitted filaments of extruded polypropylene
Material	:	Polypropylene
Color	:	White (undyed)
Absorption	:	Non Absorbable
Sterilization	:	EO (Ethylene Oxide)
Shelf Life	:	5 Years
Product Characteristics	:	Light weight construction because of which less foreign mass in the body & flexible scar tissue. Macro porous for high visibility and colonization
MFG. LIC No	:	KTK/28/441/2016
OEM. LIC No	:	N. Code: KR/DRUGS/KTK/28/441/2016

UNILENE MESH

Monofilament Polypropylene Mesh (Undyed)
Non Absorbable Sterile Surgical Mesh



Code No.	Mesh Size	No. of Units / Box
UM 0306	3cm X 6cm	6 units / box
UM 0510	5cm X 10cm	6 units / box
UM 0611	6cm X 11cm	6 units / box
UM 0815	8cm X 15cm	6 units / box
UM 1015	10cm X 15cm	3 units / box
UM 1215	12cm X 15cm	3 units / box
UM 1515	15cm X 15cm	3 units / box
UM 1530	15cm X 30cm	1 unit / box
UM 3030	30cm X 30cm	1 unit / box

HAEMOWAX

Sterile Bonewax 2.5g.



HAEMOWAX – Sterile Bone Wax

Bone Wax is a mixture of beeswax, paraffin, and isopropyl palmitate, a wax-softening agent. It is opaque and has a waxy odor. It's indicated for use in control of bleeding from bone surfaces during surgical procedures.

It achieves local haemostasis of bone by acting as a mechanical (tamponade) barrier. It does not act biochemically and is non absorb-able. It is available sterile in individual foil envelopes, each containing 2.5 g and packed in an individually sealed over wraps. Surgical wax is sterilized by Gamma radiation.

Packets should be opened just prior to use to minimize the possibility of contamination and excessive drying and should be used immediately. The Surgical Wax should not be re-sterilized or subjected to excessive heat.

Additional Information:

Material	:	Beeswax, Paraffin & Isopropyl Palmitate
Color	:	Opaque
Absorption	:	Minimally Resorbable
Sterilization	:	Gamma Radiation
Shelf Life	:	5 Years
Product Characteristics	:	Helps local haemostasis by functioning like a mechanical barrier & is biochemically inert
Packaging	:	In aluminum foil packages
MFG. LIC No	:	MFG/MD/2020/000109
OEM. LIC No	:	N. Code: KA/DEVICE/MFG/MD/2020/000109

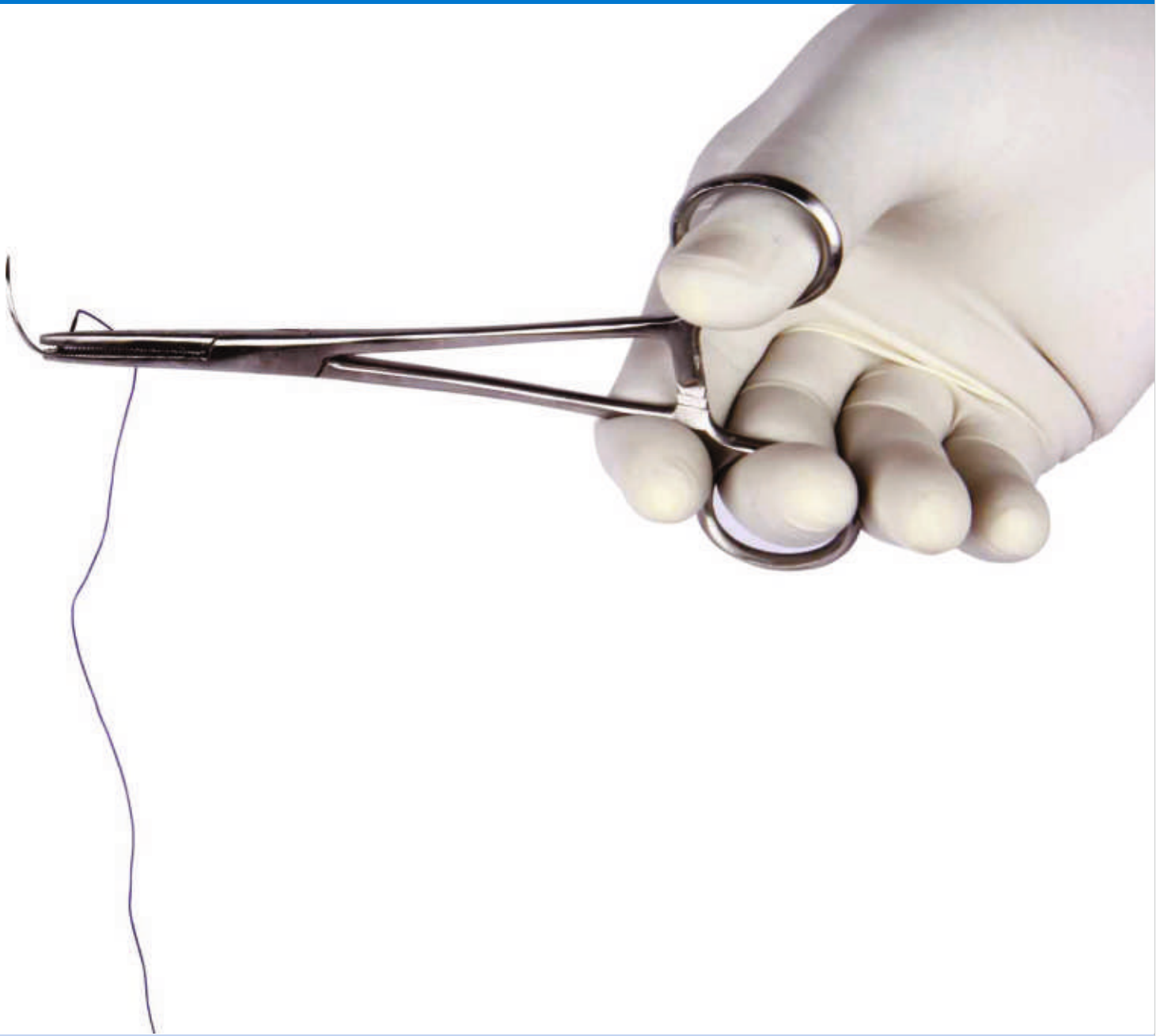
Code No.

S 810

DESCRIPTION

Sterilised Bonewax 2.5g





REGISTERED OFFICE :

UNISUR LIFECARE PVT. LTD.

No. 15/1,2,3 Andhrahalli Main Road, Acharya Indl. Complex,
Vishwaneedam Post, Near Anupama School,
BANGALORE - 560091 Karnataka, INDIA

Tel.: +91 9108 990 400 |

E-Mail: info@universalsutures.com | Web.: www.universalsutures.com



UNISUR
Lifecare Pvt. Ltd.

 EN ISO 13485
2265

NSIC