

Gavage nutrition

Nutrego clinical nutrition is complete enteral nutrition covering the energy and nutrition requirements in patients with standard or specific demands for enteral nutrition. The key component is high quality milk protein with a high proportion of whey.

All Nutrego enteral nutrition products are gluten-free and lactose-free thanks to the added lactase enzyme. High amount of MCT fats ensures fast and available energy without the risk of fat malabsorption.



nutrego INTENSE HP

For intensive care nutrition

- High proportion of whey protein to total energy
- Soluble fibre
- Low osmolality

Indication

- For patients in need of high doses of protein (catabolism, sepsis)
- For obese patients, incl. sarcopenic obesity
- To support the protective function of the intestinal barrier
- In IBD
- Early enteral nutrition (trophic)
- In cases of fat malabsorption

Key nutritional values

ml	100	500	1000
energy (kcal)	118	590	1180
protein (g)	10	50	100
fat (g)	3,2	16	32
-of which MCT (g)	1,7	8,4	16,8
carbohydrates (g)	12	60	120
chicory root fibre (g)	0,5	2,5	5
osmolality	315 mOsmol/l		

Taste: neutral

Sales packaging: 12 x 500 ml, 6 x 1000 ml



nutrego FORTE

nutrition for protein and energy deficit

- High amount of protein
- High amount of energy
- High amount of MCT

Indication

- For malnutrition or the risk of malnutrition
- For cardiac insufficiency
- For oncological diseases
- For burns
- For pre-surgery or convalescent patients
- For intensive care

Key nutritional values

ml	100	500	1000
energy (kcal)	202	1010	2020
protein (g)	8,5	43	85
fat (g)	8	40	80
-of which MCT (g)	5,3	26,5	53
carbohydrates (g)	24	120	240
-of which sugar (g)	15,8	79	158
osmolality	778 mOsmol/l		

Taste: neutral

Sales packaging: 12 x 500 ml, 6 x 1000 ml



nutrego DIA

nutrition for hyperglycaemia prevention and treatment support

- Low amount of carbohydrates
- Low osmolality
- Soluble fibre

Indication

- For impaired glucose tolerance
- For diabetes mellitus
- For insulin resistance
- For stress-induced hyperglycaemia

Key nutritional values

ml	100	500	1000
energy (kcal)	102	510	1020
protein (g)	5	25	50
fat (g)	3,7	18,5	37
-of which MCT (g)	2,4	12	24
carbohydrates (g)	11,1	55,5	111
-of which sugar (g)	5,1	25,5	51
chicory root fibre (g)	2	10	20
osmolality	365 mOsmol/l		

Taste: neutral

Sales packaging: 12 x 500 ml, 6 x 1000 ml



nutrego FIBRE+

nutrition for intestinal motility disorders

- High amount of soluble fibre
- Low osmolality
- High amount of D vitamin

Indication

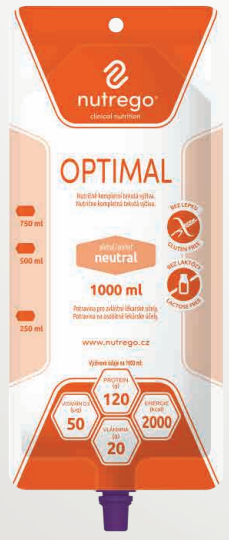
- Constipation or diarrhoea prevention
- In ATB therapy (ATB-induced diarrhoea)
- In IBD (Crohn's disease, ulcerative colitis)
- For improvement of bowel movement

Key nutritional values

ml	100	500	1000
energy (kcal)	100	500	1000
protein (g)	4,7	23,5	47
fat (g)	3,6	18	36
-of which MCT (g)	0,3	1,5	3
carbohydrates (g)	11	55	110
chicory root fibre (g)	2,2	11	22
osmolality	330 mOsmol/l		

Taste: neutral

Sales packaging: 12 x 500 ml, 6 x 1000 ml



nutrego OPTIMAL

nutrition in energy, protein and fibre deficiency

- High amount of protein and energy
- High amount of soluble fibre
- High amount of D vitamin

Indication

- In case of malnutrition or risk of malnutrition
- In need of a high dose of energy and/or protein
- For the support of the protective function of the intestinal barrier
- While ensuring a sufficient dose of vitamin D
- In case of sepsis, critical illness incl. burns
- With long-term enteral nutrition, e.g. in oncology / neurological patients
- In case of need for fluid restriction during enteral nutrition (e.g. cardiac insufficiency)

Key nutritional values

ml	100	500	1000
energy (kcal)	200	1000	2000
protein (g)	12	60	120
fat (g)	7,8	39	78
-of which MCT (g)	0,5	2,5	5
carbohydrates (g)	19,5	97,5	195
chicory root fibre (g)	2	10	20
osmolality	520 mOsmol/l		

Taste: neutral

Sales packaging: 12 x 500 ml, 6 x 1000 ml

2023/01/EN01



Sipping and Gavage nutrition



Feeding means Healing



Gluten-free



Lactose-free



Whey protein

Premium clinical nutrition made in the Czech Republic

Contact for all business development enquiries: email: sales@nutrego.eu, tel.: +420 725 570 386

www.nutrego.eu

Sipping

Nutrego clinical nutrition developed by a group of Czech medical doctors and nutrition specialists with the aim of ensuring top quality and easily available nutrition in situations where regular food is unable to supply sufficient energy, proteins and other macro- and micronutrients.

Key component of Nutrego clinical nutrition is a high-quality milk protein - whey. All Nutrego products are lactose free as they contain the lactase enzyme which breaks down milk sugar (lactose). This unique quality makes Nutrego products suitable even for lactose-intolerant clients. All Nutrego products are gluten free and can be used both as a dietary supplement or as a single source of nutrition (except for Nutrego Fruty) for both healthy and sick clients (particularly in malnutrition).



nutrego FORTE

hypercaloric nutrition with high protein content and no fibre

- Indication**
- intended as a diet for malnutrition or the risk of malnutrition
 - for patients with increased protein and energy requirements (e.g. oncological diseases, IBD→*)
 - to improve patients' nutritional status pre- and post-surgery

Flavours: vanilla, chocolate, nut, cappuccino, apricot, wild strawberry

Sales packaging: 12 x 200 ml, 12 x 330 ml

Key nutritional values				
ml	100	200	330	
energy (kcal)	202	404	667	
protein (g)	8,5	17	28	
fat (g)	8	16	26,4	
carbohydrates (g)	24	48	79,2	
-of which sugars (g)	15,8	31,6	52,1	
fibre (g)	0	0	0	

Daily dose¹			
ml	200	330	
supplemen. nutri.	1-2 pcs.	1 pc.	
complete nutrition	5 pcs.	3 pcs.	



nutrego FRUTY

fat-free hypercaloric nutrition with fruit flavour (nutritionally incomplete)

- Indication**
- intended for malnutrition or the risk of malnutrition in patients with diseases of the gallbladder, pancreas or liver
 - suitable as part of a reduced-fat diet
 - for those with intolerance of dairy forms of nutritional support

Flavours: apple, orange, strawberry, cherry, black currant

Sales packaging: 12 x 330 ml

Key nutritional values		
ml	100	330
energy (kcal)	150	495
protein (g)	4,5	14,8
fat (g)	0	0
carbohydrates (g)	33	109
-of which sugars (g)	5,1	16,8
fibre (g)	0	0

Daily dose¹	
ml	330
supplementary nutrition	1-2 pcs.
complete nutrition	3-4 pcs.



nutrego CREME

hypercaloric nutrition with a creamy consistency and a high protein and energy content, fibre-free

- Indication**
- intended for malnutrition or the risk of malnutrition
 - suitable for patients with difficulty swallowing foods or liquids (dysphagia)
 - suitable nutrition for seniors
 - for patients with neurological disorders

Flavours: chocolate, vanilla

Sales packaging: 12 x 175 g

Key nutritional values		
g	100	175
energy (kcal)	200	350
protein (g)	10	17,5
fat (g)	7,5	13
carbohydrates (g)	23	40,3
-of which sugars (g)	4	7
fibre (g)	0	0

Daily dose¹	
g	175
supplementary nutrition	2 pcs.



nutrego DIA

isocaloric nutrition with low glycaemic index and soluble fibre

- Indication**
- intended for malnutrition or the risk of malnutrition in patients with diabetes mellitus or hyperglycaemia
 - suitable for overweight or obese patients to compensate for nutritional deficiencies
 - supports proper bowel function

Flavours: vanilla, chocolate, nut

Sales packaging: 12 x 200 ml, 12 x 330 ml

Key nutritional values			
ml	100	200	330
energy (kcal)	102	204	337
protein (g)	5	10	17
fat (g)	3,7	7,4	12
carbohydrates (g)	11,1	22,2	36,6
-of which sugars (g)	5,1	10,2	16,8
fibre (g)	2	4	6,6

Daily dose¹		
ml	200	330
supplemen. nutri.	3-4 pcs.	2 pcs.
complete nutrition	9-10 pcs.	5-6 pcs.



nutrego PLUS FRUTY

Hypercaloric incopmlete nutrition with 35% fruit and vitamin D

- Indication**
- in case of malnutrition or risk of malnutrition, for patients with disease gallbladder, pancreas or liver
 - in case of fat absorption disorders, suitable as part of a fat-restricted diet
 - with increased need for energy
 - with taste intolerance of milk forms of nutritional support

Flavours: raspberry, blueberry, apple, peach

Sales packaging: 4 x 175 ml

Key nutritional values		
ml	100	175
energy (kcal)	152	266
protein (g)	5,6	9,8
fat (g)	0,1	0,2
carbohydrates (g)	32	56
-of which sugars (g)	14	25
fibre (g)	0,9	1,6

Daily dose¹	
ml	175
supplementary nutrition	2-3 pcs.

Values refer to raspberry flavor.



nutrego RENAL

hypercaloric nutrition with controlled amounts of proteins and electrolytes

- Indication**
- intended for malnutrition or the risk of malnutrition in patients with renal insufficiency (pre-dialysis stage)
 - supports better mineral imbalance correction (hyperkalaemia, hyperphosphatemia)
 - also suitable for patients with hypertension

Flavours: vanilla, chocolate

Sales packaging: 12 x 200 ml, 12 x 330 ml

Key nutritional values			
ml	100	200	330
energy (kcal)	162	324	535
protein (g)	4	8	13
fat (g)	6	12	20
carbohydrates (g)	23	46	75,9
-of which sugars (g)	11	22	36,3
fibre (g)	0	0	0

Daily dose¹		
ml	200	330
supplemen. nutri.	1-2 pcs.	1-2 pcs.
complete nutrition	4-5 pcs.	3 pcs.



nutrego RENAL HP

isocaloric nutrition with a high content of protein and an adjusted electrolyte proportion

- Indication**
- intended for malnutrition or the risk of malnutrition in dialysis patients with chronic renal failure
 - helps improve the balance of certain electrolytes
 - suitable for patients with diabetes mellitus

Flavours: vanilla, chocolate

Sales packaging: 12 x 200 ml

Key nutritional values		
ml	100	200
energy (kcal)	114	228
protein (g)	10	20
fat (g)	3	6
carbohydrates (g)	11,5	23
-of which sugars (g)	8	16
fibre (g)	0,8	1,6

Daily dose¹	
ml	200
supplementary nutrition	1-2 pcs.
complete nutrition	5-7 pcs.

Instant thickener to thicken food and drinks



nutrego ADENSIN

nutrego Adensin is an instant thickener designed to thicken beverages and foods for the dietary management of swallowing problems (dysphagia). It contains xanthan gum, which makes the thickener resistant to salivary amylase, to make swallowing safe. It does not form lumps in liquids, to deliver optimum and consistent thickening of all liquids.

Flavours: neutral

Sales packaging: 1 x 400 g

Thickening options:



Juice



Tea



Coffee



Water



Soup



Sauce

Key nutritional values	
ml	100
energy (kcal)	310
fat (g)	0
-saturated fatty acids (g)	0
carbohydrates (g)	62
-of which sugars (g)	6
protein (g)	2,1
fibre(g)	27
salt(g)	3,5
Na (mg)	1400
K (mg)	16,8