

Angiography System

Trinias Accessories



Angiography System

Trinias Accessories

Contents



■ Digital

- p. 3** • SMART Touch • Secondary Mouse Kit
• Interphone

■ C-arm

- p. 3** • CyberConsole

- p. 4** • CyberGrip • Remote Console
• Local Console • Console Cart

- p. 5** • Collimator Console • Injector Carriage
• Protective Shields Mounting

■ Catheter table

- p. 6** • Foot Switch • Wireless Foot Switch
• Table Console • Tilt Table Console

- p. 7** • Grip Switch • Acrylic Arm Support
• Carbon Arm Rest • Arm Support

- p. 8** • Mattress Set • Drip stand.
• Grip Handle • Sub Rail

- p. 9** • Injector Head Mount • Slide Rail
• Stop Switch Console • Patient Fixing Belt

- p.10** • Shoulder Rest • Head Rest
• Extension Table

※KS-70(non-tilting table) is a conventional type catheter table.
※KS-100(tilting table) is a multifunctional SMART Table adapted to a variety of techniques and procedures.

■ Monitor

- p.11** • LIVE Color LCD Monitor (examination room) • Monitor Suspension
• LIVE Color LCD Monitor (control room) • Monitor Cart

Standard : **ST**
Optional : **OP**
Units : mm

SMART Touch

Easily control the digital system with a combination of the touch panel and joystick.

System operations required during an intervention are integrated into the one touch panel, for example, changing of fluoroscopy-mode or acquisition-mode, selecting the image, changing the layout of the SMART Display (Option), and so on. The combination of the touch panel and joystick provide intuitive operation.



Examination room (ST)

Installation : Touch panel W300×D220 Joystick W70×D150



Control room (OP)

Installation : Touch panel W300×D200×H200
Joystick W120×D200×H200

Interphone (ST)

Interactive speech system between the examination room and the control room

Two-way conversation is available.

From the examination room to the control room, voice is always delivered with volume control.

From the control room to the examination room, voice can be turned on and off with a push-to-talk button.

Speakers, a stand microphone for the control room and a sound collection microphone for the examination room are included.

(The photo shows a stand microphone for the control room.)



Secondary Mouse Kit (OP)

Control most of the digital functions in the examination room.

The Digital system or SCORE 3D Workstation can be operated from the bed side in the examination room, outside the clean area.

Consisting of a mouse, a mouse rest, and receiving kit.



Mounting : W180×D220

CyberConsole (ST)*

Intuitive C-arm control

Designed to be as narrow as possible, the console doesn't intrude on your workspace.

The joysticks are made to be non-slip so that they can be used under sterile covers.

Designed to be easily identify by touch.



Single-plane

* Select either this item or the CyberGrip.

Mounting : W330×D150



Bi-plane

Mounting : W470×D150

CyberGrip OP

One-hand control of C-arm

C-arm controller with which you can change C-arm angles, table float and SID using one hand.

Intuitive operation is provided by twisting the grip up, down, left and right.

Efficient workflow is achieved when used together with the Direct Memory buttons.

(Single plane only)

* Alternative C-arm controller of Cyber Console



Mounting : W210×D260

Remote Console OP

Control of the C-arm from the control room, space-saving design

This remote console allows C-arm operation from the control room in the same way as in the examination room.

With its space-saving design, it can be installed in a small control room.

It also includes the display of C-arm and table information.



Single-plane

* Select either this item or the Collimator Console.

W395×D200×H80



Bi-plane

W460×D265×H115

Local Console ST

Easy control of the C-arm position, collimator and compensation filter

The local console is equipped with switches for C-arm, collimator and filter control.

C-arm position, C-arm parking, C-arm movement linked with acquisition, collimation and filtering can be controlled with this console.



Single-plane

Mounting : W240×D150



Bi-plane

Mounting : W330×D150

Console Cart OP

All table-side controllers can be mounted.

Easy operation outside of a clean area can be achieved by mounting the SMART Touch (Include Joystick), Cyber Console, Local Console and Table Console on the Console Cart.

A fluoroscopy foot switch is included.

Mounting Example : KS-70 table version



Single-plane

Bi-plane

Collimator Console

Control of the collimator, compensation filter and FOV from the control room.

The collimator console is equipped with collimator levers, compensation filter levers, and FOV switches. These functions are the same as those on the local console in the examination room.



Single-plane **OP**

W125×D110×H60

Bi-plane **ST**

It is a standard component in a bi-plane system.

W125×D250×H120

Injector Carriage **OP**

This is the carriage for an injector running on the ceiling rails.

The Injector Carriage provides the required support and attachment for a ceiling mounted injector running on the ceiling rails.



Protective Shields Mounting **OP**

Attachment for a ceiling-mounted X-ray protection acrylic shield

This mounting point provides an attachment for an X-ray protection acrylic shield made by MAVIG. It can be attached to one of the monitor suspension ceiling rail.



■ Foot Switch (ST)

Foot switch providing simple and easy operation.

This is a standard foot switch.

Simple design and easy operation.

Manufactured from rust resistant stainless steel.

High rigidity and suitable weight provide easy toe operation.



■ Wireless Foot Switch (OP)

Since there is no cable, it is easy to clean and can be operated from anywhere.
In addition to exposure, you can also assign table operations or frequently used functions.

The wireless footswitch can perform fluoroscopy, acquisition, control the patient table etc.

Up to 2 units can be mounted per system.

A standard foot switch is also installed when this option is selected.

Available only in wireless ready regions.
Please check with the sales representative.



■ Table Console (ST)

The catheter table top can float. You can operate the table with a light touch.

Mushroom grip table top float console for KS-70 version.

Providing single hand operation of the table top movements during procedures and while injecting at the same time.

Can be used with the grip switch option.

Up to 2 consoles can be mounted per system.

(The second is optional).



KS -70 only

■ Tilt Table Console (ST)

Quick and light operation of the table top movement with electric motor support

Manual and motor driven table top float are provided.

Tilt, Roll and vertical movement are provided.

A memory function ensures easy positioning.



KS -100 only

Grip Switch OP

Suitable for floating the table top from outside the clean area

Grip switch for the table top float.
Control the table top float by pressing the switch with your thumb and applying a suitable force in the desired direction of movement.
Available as an additional option combined with standard table consoles.



Acrylic Arm Support ST

Designed to support the patients arms away from devices.

Providing protection to prevent arms or hands from falling from the table.
Use by inserting between the table and the mattress.



W550×D250×H130

Carbon Arm Rest ST

High stiffness and low X-ray absorption, suitable for fluoroscopy and acquisition of an arm.
Light but strong and easy to handle.

Insert between the table top and the mattress.
Can be used for either the left or right arm.



Maximum Load Capacity: 5kgf.

Arm Support OP

Arm holder for radial approach

This Arm Support is attached to the table top, providing support for equipment or a patient's arm and is suitable for radial or brachial approach.
Supplied with a mattress of the same size.
Cannot be swapped from left to right.



Left



Right

W880×D250 / maximum load : 5kgf.

W880×D400 / maximum load : 5kgf.

■ Mattress Set OP

Low rebound material increases patient's comfort.

This mattress is made of 55 mm low-resilience material and is designed for patients' comfort during long procedures.

It has the same shape as the table with no difference in level.

A 70mm (Option) is also available for selection.



W2880×D700×H55 (or H70)

■ Drip Stand ST

To hang an intravenous drip bottle.

Manufactured from rust resistant stainless steel.

The height can be easily adjusted.



H715-1215

■ Grip Handle OP

Comfortable position for a patient

A patient can achieve a comfortable position during heart examinations by gripping this overhead handle.

The Grip Handle is attached to the table-top and is fixed in place with clamping screws.

It can be easily attached or removed without tools.



■ Sub Rail OP

Positioning of the console on the foot end of the table for control from outside the clean area.

The consoles and other accessories may be attached to the foot end of the table.



KS -70 only



KS -100 only

※An accessory mounting adapter is required to use this.

※Can not be used in combination with the extension table.

Maximum load capacity : 15.3kgf.

Injector Head Mount OP

To attach the Bayer injector to the table.

For injectors not manufactured by Bayer, please contact the respective for the injector manufacturer.



Slide Rail OP

Move the table side consoles aside for patient transfer.

A table console (tilt table console), a cyber console, a local console, and a SMART Touch controller can be installed on this rail.

All these consoles can be moved aside for patient transfer.

* In case of the bi-plane system, SMART Touch cannot be mounted on this slide rail because there are more consoles than on a single plane system.

Please contact a sales or service representatives for a solution for bi-plane systems, such as a combination with a sub rail or other solutions.

W1340 / Max Load : 15.3kgf.



Normal position



Slide position

Stop Switch Console ST

EMERGENCY STOP switch



Patient Fixing Belt ST (KS-100 only)

Prevents a patient from slipping off when tilting or rolling.

A belt is wrapped around the patient and the table top and fastened with Velcro, attached to the belt, to secure the patient.

KS -100 includes 2 of 2m belts.



W2000,3000×D100

■ Shoulder Rest ST (KS-100 only)

Prevents a patient from slipping off when tilting head down.

The Shoulder Rest can be easily attached or removed without tools.



■ Extension Table OP (KS-100 only)

Useful for long catheters

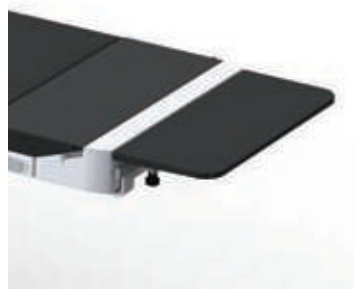
A plate attached to the foot end of the table to support catheters etc..

The Extension Table is attached to the table rail with clamping screws and can be easily attached or removed without tools.

※An accessory mounting adapter is required to use this option.

※Cannot be used in combination with a Sub Rail.

W260×D622 / Maximum load capacity: 5kgf.



■ Head Rest OP

Patient's head can be securely positioned

Headrest to position a patient's head during head examinations.

It is also useful during other kinds of examinations.

The SCORE 3D option includes this Head Rest.



W230×D220×H70

LIVE Color LCD Monitor (examination room) OP

Simultaneous display of fluoroscopy, MAP and reference images in support safe Interventions

During SCORE MAP which is Trinias's road-map function, this allows simultaneous display of 3 kinds of images, fluoroscopy, MAP and reference images.
Without this option, simultaneous display is restricted up 2 kinds of images, MAP image and another.



SMART Display

The package for SMART Display consists of cables and boards, no monitor.

If the same display method is also needed in the control room, "LIVE Color LCD (control room)" option is additionally required.



19" LCD Monitor

The package for 19inch LCD consists of cables and boards and one additional monitor.

If the same display method is also needed in the control room, "LIVE Color LCD (control room)" option is additionally required.

LIVE Color LCD Monitor (control room) OP

Simultaneous display of fluoroscopy, MAP and reference images in the control room in support safe Interventions.

During SCORE MAP which is Trinias's road-map function, this allows simultaneous display of 3 kinds of images, fluoroscopy, MAP and reference images.

If simultaneous display of 3 kinds of images is needed in the control room, this option is additionally required.

Bi-plane system requires 2 sets of this option.



19" LCD control room

Monitor Suspension ST

Overhead traveling suspension system providing free and light positioning, including vertical movement.

The counter balance system allows manual vertical movement. An X-ray irradiation lamp is installed as standard.



SMART Display (Bi-plane)

58" SMART Display and Backup Monitors are mounted on this suspension.



19" LCD Monitor

There are 3 types available.

Alternatives include 4 of 19" monitors, 6 of 19" monitors and 8 of 19" monitors respectively.

Monitor Cart OP

Monitor carts are useful when ceiling construction is not possible

This is a monitor cart for the examination room, which can be equip with a Live monitor, Reference monitor and Information Display.

The height and tilt of the monitors can easily be manually adjusted.

This can be used when the monitor suspension cannot be installed.



Scan me,
feel Trinius!



Founded in 1875, Shimadzu Corporation, a leader in the development of advanced technologies, has a distinguished history of innovation built on the foundation of contributing to society through science and technology. We maintain a global network of sales, service, technical support and applications centers on six continents, and have established long-term relationships with a host of highly trained distributors located in over 100 countries. For information about Shimadzu, and to contact your local office, please visit our website at www.shimadzu.com



Shimadzu Corporation

Headquarters

1, Nishinokyo-Kuwabara-cho, Nakagyo-ku, Kyoto 604-8511, Japan
<https://www.shimadzu.com/med/>



Shimadzu Corporation Medical Systems Division has been certified by TÜV Rheinland as a manufacturer of medical systems in compliance with ISO9001:2015 Quality Management Systems and ISO13485:2016 Medical Devices Quality Management Systems.

Remarks:

- Every value in this catalogue is a standard value, and it may vary a little from the actual at each site.
- The appearances and specifications are subject to change for reasons of improvement without notice.
- Items and components in the photos may include optional items. Please confirm with your sales representative for details.
- Certain configurations may not be available pending regulatory clearance. Contact your Shimadzu representative for information on specific configurations.
- Before operating this system, you should first thoroughly review the Instruction Manual.