

201. 25



Product datasheet

Anti-VEGFA antibody [SP28], prediluted ab27620

RabMAb

★★★★★ 2 Abreviews 8 References 2 Images

Overview

Product name	Anti-VEGFA antibody [SP28], prediluted
Description	Rabbit monoclonal [SP28] to VEGFA, prediluted
Host species	Rabbit
Tested applications	Suitable for: IHC-P <i>Ref 3</i>
Species reactivity	Reacts with: Human
Immunogen	Synthetic peptide within Human VEGFA aa 1-100 (N terminal). The exact sequence is proprietary. Database link: P15692
Positive control	Tumor cells in hemangiosarcomas <i>Ref 1</i>
General notes	This product is FOR RESEARCH USE ONLY. For commercial use, please contact partnerships@abcam.com.

Reproducibility is key to advancing scientific discovery and accelerating scientists' next breakthrough.

Abcam is leading the way with our range of recombinant antibodies, knockout-validated antibodies and knockout cell lines, all of which support improved reproducibility.

We are also planning to innovate the way in which we present recommended applications and species on our product datasheets, so that only applications & species that have been tested in our own labs, our suppliers or by selected trusted collaborators are covered by our Abpromise™ guarantee.

In preparation for this, we have started to update the applications & species that this product is Abpromise guaranteed for.

We are also updating the applications & species that this product has been "predicted to work with," however this information is not covered by our Abpromise guarantee.

Applications & species from publications and Abreviews that have not been tested in our own labs or in those of our suppliers are not covered by the Abpromise guarantee.

Please check that this product meets your needs before purchasing. If you have any questions, special requirements or concerns, please send us an inquiry and/or contact our Support team ahead of purchase. Recommended alternatives for this product can be found below, as well as customer reviews and Q&As.

Properties

Form	Liquid
Storage instructions	Shipped at 4°C. Store at +4°C.
Storage buffer	pH: 7.60 Preservative: 0.1% Sodium azide Constituents: Tissue culture supernatant, Tris buffered saline, 1% BSA
Purity	Tissue culture supernatant
Clonality	Monoclonal
Clone number	SP28
Isotype	IgG <i>Ref 2</i>

Applications

Our [Abpromise guarantee](#) covers the use of **ab27620** in the following tested applications.

The application notes include recommended starting dilutions; optimal dilutions/concentrations should be determined by the end user.

Application	Abreviews	Notes
IHC-P	★★★★★ <i>Ref 5</i>	1/1. Perform heat mediated antigen retrieval before commencing with IHC staining protocol. Boil tissue section in 10mM citrate buffer, pH 6.0 for 10 min followed by cooling at room temperature for 20 min.

Target

Function

Growth factor active in angiogenesis, vasculogenesis and endothelial cell growth. Induces endothelial cell proliferation, promotes cell migration, inhibits apoptosis and induces permeabilization of blood vessels. Binds to the FLT1/VEGFR1 and KDR/VEGFR2 receptors, heparan sulfate and heparin. NRP1/Neuropilin-1 binds isoforms VEGF-165 and VEGF-145. Isoform VEGF165B binds to KDR but does not activate downstream signaling pathways, does not activate angiogenesis and inhibits tumor growth.

Tissue specificity

Isoform VEGF189, isoform VEGF165 and isoform VEGF121 are widely expressed. Isoform VEGF206 and isoform VEGF145 are not widely expressed.

Involvement in disease

Defects in VEGFA are a cause of susceptibility to microvascular complications of diabetes type 1 (MVCD1) [MIM:603933]. These are pathological conditions that develop in numerous tissues and organs as a consequence of diabetes mellitus. They include diabetic retinopathy, diabetic nephropathy leading to end-stage renal disease, and diabetic neuropathy. Diabetic retinopathy remains the major cause of new-onset blindness among diabetic adults. It is characterized by vascular permeability and increased tissue ischemia and angiogenesis.

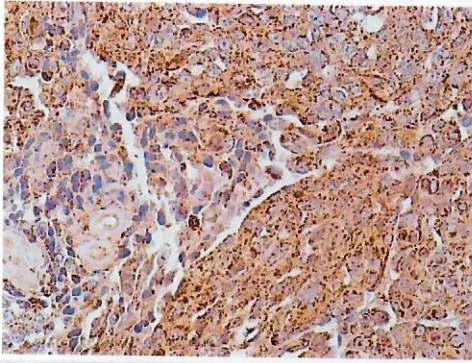
Sequence similarities

Belongs to the PDGF/VEGF growth factor family.

Cellular localization

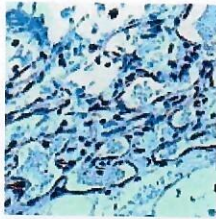
Secreted. VEGF121 is acidic and freely secreted. VEGF165 is more basic, has heparin-binding properties and, although a significant proportion remains cell-associated, most is freely secreted. VEGF189 is very basic, it is cell-associated after secretion and is bound avidly by heparin and the extracellular matrix, although it may be released as a soluble form by heparin, heparinase or plasmin.

Images



Immunohistochemical staining of human angiosarcoma labelling VEGF (SP28) with ab27620 at a 1:1 no dilution.

Immunohistochemistry (Formalin/PFA-fixed paraffin-embedded sections) - Anti-VEGFA antibody [SP28], prediluted (ab27620)



Ref 3

Paraffin embedded formalin fixed human angiosarcoma tissue section stained with prediluted anti VEGF antibody ab27620.

Immunohistochemistry (Formalin/PFA-fixed paraffin-embedded sections) - Anti-VEGFA antibody [SP28], prediluted (ab27620)

Please note: All products are "FOR RESEARCH USE ONLY. NOT FOR USE IN DIAGNOSTIC PROCEDURES"

Our Abpromise to you: Quality guaranteed and expert technical support

- Replacement or refund for products not performing as stated on the datasheet
- Valid for 12 months from date of delivery
- Response to your inquiry within 24 hours
- We provide support in Chinese, English, French, German, Japanese and Spanish
- Extensive multi-media technical resources to help you
- We investigate all quality concerns to ensure our products perform to the highest standards

If the product does not perform as described on this datasheet, we will offer a refund or replacement. For full details of the Abpromise, please visit <https://www.abcam.com/abpromise> or contact our technical team.

Terms and conditions

