

IVD solutions through partnership



MASTDISCS®

Leading the field with a complete solution for AST and Identification disc testing

- Comprehensive range
- Premium quality products
- Compatible with EUCAST and CLSI standards
- Bespoke service available




Mast Group Ltd., has been a manufacturer of antibiotic susceptibility test products since 1957, and continues to be at the forefront of developments in this field. With an ever-expanding portfolio of antibiotic susceptibility, combination and identification discs, Mast Group Ltd. supplies the most comprehensive range available worldwide. Mast Group Ltd. also offers a range of services including **mastpharma**® development and **mastpharma**® stability for the evaluation of novel antimicrobial compounds for the pharmaceutical industry.

Disc diffusion is still the most popular method for determining bacterial antibiotic susceptibility in the treatment of infectious disease, as highlighted by the variety of international standardised procedures including The European Committee on Antimicrobial Susceptibility Testing (EUCAST) and The Clinical and Laboratory Standards Institute (CLSI).

MASTDISCS® are available as an extensive range of test discs presented in dispensing cartridges or vials, with quality assurance guaranteed in accordance to standardised test protocols as issued by the above national and international organisations.

Disc Diffusion Susceptibility Testing

Order No	Product		Packsizes
MASTDISCS[®] AST - ANTIBIOTIC SUSCEPTIBILITY DISCS IN CARTRIDGES AND VIALS			
MASTDISCS[®] in Cartridges (5 × 50 discs per pack)			
STOCKCART	Stock Susceptibility Cartridge Discs of a single type		1 pack
FUNGCART	Stock Antifungal Cartridge Discs of a single type		1 pack
SPECIALCART	Cartridge Discs made to special order*		Min 18 packs
MASTDISCS[®] (99+/- 2 discs per vial)			
STOCKDISC	Stock Susceptibility Discs of a single type		1 vial
FUNGDISC	Stock Antifungal Discs of a single type		1 pack
SPECIALDISC	Discs made to special order*		Min 22 packs
TOOL/C	*Set up charge for Special Discs in vials or cartridges A one off charge for customisation of each new specification		per new specification

Disc Diffusion Susceptibility Testing

MASTDISCS[®]AST

ANTIBIOTIC SUSCEPTIBILITY DISCS IN CARTRIDGES - STOCK RANGE

Description Antibiotic & Content µg per disc (unless otherwise stated)	STANDARD		Order Code Cartridges 5 × 50 discs
	EUCAST	CLSI	
Amikacin 30	✓	✓	AK30C
Amoxicillin/clavulanic acid 2-1	✓	-	AUG3C
Amoxicillin/clavulanic acid 20-10	✓	✓	AUG30C
Ampicillin 2	✓	-	AP2C
Ampicillin 10	✓	✓	AP10C
Ampicillin/Sulbactam 10-10	✓	✓	SAM20C
Azithromycin 15	-	✓	ATH15C
Aztreonam 30	✓	✓	ATM30C
Bacitracin 10 units	-	-	BA10C
Carbenicillin 100	✓	-	PY100C
Cefaclor 30	✓	✓	CFC30C
Cefadroxil 30	✓	-	CDX30C
Cefalexin 30	✓	-	CFX30C
Cefalothin 30	-	✓	KF30C
Cefazolin 30	-	✓	CZ30C
Cefepime 30	✓	✓	CPM30C
Cefiderocol 30	✓	✓	FDC30C
Cefixime 5	✓	✓	CFM5C
Cefotaxime 5	✓	-	CTX5C
Cefotaxime 30	-	✓	CTX30C
Cefoxitin 30	✓	✓	FOX30C
Cefpodoxime 10	✓	✓	CPD10C
Ceftaroline 5	✓	-	CPT5C
Ceftaroline 30	-	✓	CPT30C
Ceftazidime 10	✓	-	CAZ10C
Ceftazidime 30	-	✓	CAZ30C
Ceftazidime/avibactam 10-4	✓	-	CZA14C
Ceftazidime/avibactam 30-20	-	✓	CZA50C
Ceftibuten 30	✓	✓	CFB30C
Ceftolozane/tazobactam 30-10	✓	✓	C/T40C
Ceftobiprole 5	✓	-	BPR5C
Ceftriaxone 5	-	✓	CRO5C
Ceftriaxone 30	✓	✓	CRO30C
Cefuroxime 30	✓	✓	CXM30C
Chloramphenicol 30	✓	✓	C30C
Ciprofloxacin 5	✓	✓	CIP5C
Clarithromycin 15	-	✓	CLA15C
Clindamycin 2	✓	✓	CD2C
Delafloxacin 5	-	✓	DLX5C
Doripenem 10	✓	✓	DOR10C
Doxycycline 30	-	✓	DXT30C
Eravacycline 20	✓	✓	ERV20C
Ertapenem 10	✓	✓	ETP10C
Erythromycin 15	✓	✓	E15C
Fosfomycin/Glucose-6-Phosphate 200	✓	✓	FOT200C
Fusidic Acid 10	✓	-	FC10C
Gentamicin 10	✓	✓	GM10C
Gentamicin 30	✓	-	GM30C
Gentamicin 120	-	✓	GM120C
Imipenem 10	✓	✓	IMI10C
Imipenem/relebactam 10-25	-	✓	IMR35C
Kanamycin 30	-	✓	K30C
Lefamulin 20	-	✓	LMU20C
Levofloxacin 5	✓	✓	LEV5C
Linezolid 10	✓	-	LZD10C
Linezolid 30	-	✓	LZD30C
Mecillinam 10	✓	✓	MEC10C
Meropenem 10	✓	✓	MEM10C

Disc Diffusion Susceptibility Testing

MASTDISCS[®]AST

ANTIBIOTIC SUSCEPTIBILITY DISCS IN CARTRIDGES - STOCK RANGE

Description Antibiotic & Content µg per disc (unless otherwise stated)	STANDARD		Order Code Cartridges 5 × 50 discs
	EUCAST	CLSI	
Meropenem/Vaborbactam 20-10	✓	✓	MEV30C
Metronidazole 5	✓	-	MZ5C
Minocycline 30	-	✓	MN30C
Moxifloxacin 5	✓	✓	MF5C
Mupirocin 200	✓	-	MUP200C
Nalidixic Acid 30	✓	✓	NA30C
Neomycin 10	✓	-	NE10C
Netilmicin 10	✓	-	NET10C
Netilmicin 30	✓	-	NET30C
Nitrofurantoin 100	✓	-	NI100C
Nitrofurantoin 300	-	✓	NI300C
Nitroxoline 30	✓	-	NIB30C
Norfloxacin 10	✓	✓	NOR10C
Novobiocin 5	-	-	NO5C
Ofloxacin 5	✓	✓	OF5C
Oxacillin 1	✓	✓	OX1C
Pefloxacin 5	✓	-	PEF5C
Penicillin G 1 unit	✓	-	PG1C
Penicillin G 10 units	-	✓	PG10C
Piperacillin 30	✓	-	PRL30C
Piperacillin 100	-	✓	PRL100C
Piperacillin/tazobactam 30-6	✓	-	PTZ36C
Piperacillin/tazobactam 100-10	-	✓	PTZ110C
Rifampicin 5	✓	✓	RP5C
Streptomycin 10	-	✓	S10C
Streptomycin 300	✓	✓	S300C
Tedizolid 2	✓	✓	TZD2C
Teicoplanin 30	✓	✓	TEC30C
Temocillin 30	✓	-	TEM30C
Tetracycline 30	✓	✓	T30C
Ticarcillin 75	✓	✓	TC75C
Ticarcillin/clavulanic acid 75-10	✓	✓	TIM85C
Tigecycline 15	✓	✓	TGC15C
Tobramycin 10	✓	✓	TN10C
Trimethoprim 5	✓	✓	TM5C
Trimethoprim/sulfamethoxazole 1.25/23.75	✓	✓	TS25C
Vancomycin 5	✓	-	VA5C
Vancomycin 30	-	✓	VA30C
Blank discs	-	-	BD0680W/C/NCE

Disc Diffusion Susceptibility Testing

MASTDISCS^{AST}

NON CLINICAL ANTIBIOTIC SUSCEPTIBILITY DISCS IN CARTRIDGES - STOCK RANGE

Description Antibiotic & Content µg per disc (unless otherwise stated)	Order Code Cartridges 5 × 50 discs
Amoxicillin 25	A25C/NCE
Colistin Sulphate 10	CO10C/NCE
Colistin Sulphate 25	CO25C/NCE
Polymyxin B 300 units	PB300C/NCE

MASTDISCS^{AST}

SPECIALIST VETERINARY SUSCEPTIBILITY DISCS - STOCK RANGE

Description Antibiotic & Content µg per disc (unless otherwise stated)	Order Code Cartridges 5 × 50 discs
Cefquinone 30	CEQ30C/NCE
Cefoperazone 30	CPZ30C/NCE
Enrofloxacin 5	ENF5C/NCE
Florfenicol 30	FFC30C/NCE
Gamithromycin 15	GAM15C/NCE
Marbofloxacin 5	MAR5/NCE
Pradofloxacin 5	PRA5/NCE
Tildipirison 60	TIP60/NCE
Tylosin 30	TY30C/NCE

Disc Diffusion Susceptibility Testing

Order No Product Mechanism Packsize (tests)

MASTDISCS[®]AST

ANTIBIOTIC SUSCEPTIBILITY DISCS IN VIALS - STOCK RANGE

Description Antibiotic & Content µg per disc (unless otherwise stated)	STANDARD		Order Code Vials 99+/- 2 discs
	EUCAST	CLSI	
Bacitracin 10 units	-	-	BA10
Cefpodoxime 10	✓	✓	CPD10
Gentamicin 10	✓	✓	GM10
Metronidazole 5	✓	-	MZ5
Nalidixic Acid 30	✓	-	NA30
Oxacillin 1	✓	✓	OX1
Penicillin G 1 unit	✓	-	PG1
Vancomycin 5	✓	-	VA5
Blank discs	-	-	BD0638W/NCE

MASTDISCS[®]AST

NON CLINICAL ANTIFUNGAL SUSCEPTIBILITY DISCS IN CARTRIDGES AND VIALS - STOCK RANGE

Description Antibiotic & Content µg per disc (unless otherwise stated)	Order Code Cartridges 5 x 50 discs
Amphotericin B 20	AMB20C/NCE
Clotrimazole 10	CTM10C/NCE
Econazole 10	ECN10C/NCE
Fluconazole 10	FCN10C/NCE
Fluconazole 25	FCN25C/NCE
Flucytosine 1	FY1C/NCE
Ketoconazole 10	KCA10C/NCE
Miconazole 10	MCL10C/NCE
Nystatin 100	NY100C/NCE

Disc Diffusion Susceptibility Testing

Order No	Product	Mechanism	Packsize (tests)
----------	---------	-----------	------------------

MASTDISCS[®] Combi

COMBINATION DISC SETS FOR THE DETECTION OF ANTIBIOTIC RESISTANCE

D52C	Extended Spectrum β Lactamase Set	ESBL	50 tests
D62C	Cefotaxime 30 & Cefotaxime 30/Clavulanic Acid 10	ESBL	150 tests
D63C	Cefepime 30 & Cefepime 30/Clavulanic Acid 10	ESBL	150 tests
D64C	Ceftazidime 30 & Ceftazidime 30/Clavulanic Acid 10	ESBL	150 tests
D66C	Cefpodoxime 10 & Cefpodoxime 10/Clavulanic Acid 1	ESBL	150 tests
D67C	Extended Spectrum β Lactamase Set (CPD10)	ESBL	50 tests
D68C	AmpC & ESBL Detection Set	AmpC/ESBL	50 tests
D69C	AmpC Detection Set	AmpC	50 tests
D72C	AmpC, ESBL & Carbapenemase Detection Set	AmpC/ESBL/Carbapenemase	50 tests
D73C	MAST [®] Carba plus	MBL/KPC/OXA	50 tests
D76C	ESBL Detection Set (EUCAST)	ESBL	50 tests

Additional carbapenemase screening and identification tests

D71C	MAST [®] CAT-ID - For presumptive identification of carbapenemase production		250 tests
D74	MAST [®] ICT - screening test for the detection of carbapenemase production in Enterobacterales, <i>Pseudomonas</i> and <i>Acinetobacter</i> spp.		25 tests
TEM30C	To aid presumptive identification of OXA-48		5 x 50 discs

RAPID CARBAPENEMASE DETECTION

DNA/LYO5	Rapid molecular carbapenemase detection in Enterobacterales, <i>Pseudomonas</i> spp. and <i>Acinetobacter</i> spp.		10 tests
PACE-ID	Colorimetric test for the rapid detection of carbapenemase producing <i>Pseudomonas</i> spp., <i>Acinetobacter</i> spp. and Enterobacterales.		48 tests

MASTDISCS[®] AST

PENICILLIN DISCS

For detecting the emergence of penicillin resistance. (99+/- 2 discs or 5 x 50 discs in cartridges)

PG1	Penicillin G	1 unit (vials)	1 vial
PG1C	Penicillin G	1 unit (cartridges)	1 pack

HIGH CONTENT AMINOGLYCOSIDE DISCS

The following discs are available to special order and subject to 6 weeks lead time.

For detecting high level aminoglycoside resistance. (99+/- 2 discs or 5 x 50 discs in cartridges)

GM500C		500 μ g	Min order
K1000C/NCE		1000 μ g	18 packs
K1000/NCE		1000 μ g	Min order
			22 vials

Any code with a suffix of '/NCE' is not CE marked and for veterinary or research use only.

Disc Diffusion Susceptibility Testing

Order No

Product

Packsize

DISCMASTER DISPENSER

Robust and reliable antimicrobial cartridge disc dispensers designed for use with MASTDISCS® Antimicrobial Susceptibility Test Cartridges.

MDD65	MAST® DISCMASTER Dispenser - 6 place	1
SILICA63	Silica Gel Capsule for MAST® DISCMASTER	4
SHD5	Single Cartridge Hand Dispenser	5
CANISTER	Canister for MDD64 models and below	1
CANISTER65	Canister for MDD65 MAST® DISCMASTER Dispenser	1



IVD solutions through partnership

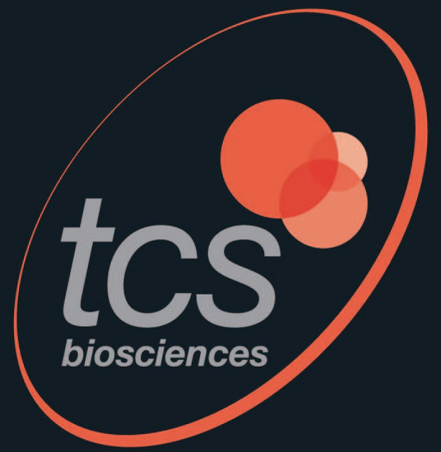
Mast Group Ltd.
Mast House, Derby Road, Bootle, Merseyside L20 1EA
Tel: + 44 (0) 151 933 7277 e-mail: sales@mast-group.com

Mast Diagnostica GmbH
Feldstrasse 20, DE-23858 Reinfeld
Tel: + 49 (0) 4533 2007 0 Fax: + 49 (0) 4533 2007 68 e-mail: mast@mast-diagnostica.de

Mast Diagnostic
12 Rue Jean-Jacques Mention, CS 91106, 80011 Amiens CEDEX 1
Tél. + 33 (0) 322 80 80 67 Fax + 33 (0) 322 80 99 22 e-mail: info@mast-diagnostic.fr



accuracy and quality as a science



Selectrol®
Technical
Guide



Selectrol® : Manufactured under licence from Public Health England Culture Collections

SELECTROL® - FREEZE-DRIED ORGANISMS IN A DISC

Quality control of microbial characterisation tests, culture media and antimicrobial susceptibility determinations is best accomplished by the use of microorganisms with well-documented and stable phenotypic and genotypic characteristics.

Bacterial and fungal strains have been selected and recommended by expert bodies, such as **EUCAST**, **CLSI** and the European Pharmacopoeia, on the basis of their suitability for monitoring test performance and ensuring the validity of results for testing used in clinical, food, pharmaceutical, water and veterinary laboratories.

Products derived from the cultures in the collections should be manufactured using the minimum number of sub-cultures, to minimise the possibility of alterations to the phenotype due to mutations. See also page 14.

Selectrol strains are manufactured exclusively from Public Health England Culture Collections (NCTC® and NCPF®) and are first generation subcultures, unlike many products on the market which are 2nd, 3rd or 4th generation subcultures. They are preserved by long-term storage as freeze-dried cells in order to minimise any alterations to the phenotype caused by mutations.

Passages

A Selectrol® disc is a first generation subculture from a **master culture** sourced from Public Health England Culture Collections, and is designed to be used to obtain **working stock** cultures for use in testing. It is generally accepted that no more than a total of five passages should be made from the **master culture**, in order to avoid genetic drift and mutant selection. Therefore, no more than four passages (fresh cultures) from the **working stock** should be made.

Shelf life

For most strains, Selectrol® discs are guaranteed to contain at least 10⁶ organisms at the time of purchase; this number is sufficient to ensure that when the discs are used and stored as directed there will be viable organisms cultivable up to the stated end of the shelf life, which is usually 9 months from the time the vial is first opened.

Quality Control

Selectrol® batches are tested in our UKAS accredited testing laboratory number 2496. A test report for each batch of Selectrol® can be accessed via our website. The reporting of Selectrol® test results via the website comes under our UKAS accreditation.

Selectrol® cultures are rigorously tested to confirm identity, to confirm the possession of essential phenotypic characteristics and to exclude contamination with other organisms. Photographic evidence of the test results is retained for each batch, along with retained appropriately stored samples.



Glossary

AMRHAI: Antimicrobial Resistance and Healthcare Associated Infections reference unit

ATCC®: American Type Culture Collection. ATCC® strains are listed for reference only. ATCC® is a registered trademark of the American Type Culture Collection.

BSAC: British Society for Antimicrobial Chemotherapy - Now superseded by EUCAST

CLSI: Clinical Laboratory Standards Institute. (USA)

CPE: Carbapenemase Producing Enterobacteriaceae

CRE: Carbapenem Resistant Enterobacteriaceae

Culture collection: Cultures of fully characterised organisms maintained in such a way as to minimise sub-culturing. See page 14.

ESBL: Extended Spectrum Beta-Lactamase-producing organism.

EUCAST: European Committee on Antimicrobial Susceptibility Testing.

First generation derivative: A single passage from a master culture, for example a Selectrol® disc.

Master culture: Culture derived from a reference culture vial.

NCPF®: National Collection of Pathogenic Fungi. NCPF® is a registered trademark of Public Health England.

NCTC®: National Collection of Type Cultures. NCTC® is a registered trademark of Public Health England.

Passage: An equivalent term for a subculture.

PHE: Public Health England.

Reference cultures: Quality control strains selected on the basis of their phenotypic biochemical and antimicrobial susceptibility characteristics to be used as controls in microbiological testing. These are obtained as freeze-dried vials from culture collections.

Stock culture: Cultures derived from a Selectrol® disc, which can be stored for up to a week, usually on agar slants.

Working cultures: Stock cultures further sub-cultured to provide 18-24 hour growth for use in testing.

WDCM: World Data Centre for Microorganisms

WFCC: World Federation for Culture Collections

SIGNIFICANT PROPERTIES AND USES OF SELECTROL® ORGANISMS

Aspergillus brasiliensis (formerly *Aspergillus niger*):

MM94 – NCPF® 2275 / ATCC® 16404 / WDCM 00053 – used in pharmaceutical industry for testing media and preservatives. Colonies are initially white or yellowish and on the reverse greyish or greenish-yellow. Sporing heads on the colony surface are initially pale, becoming dark brown to black. Sporulation may be inhibited in sealed plates.

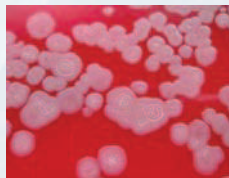
Bacillus cereus:

MM21 – NCTC® 10320 / ATCC® 9634 / WDCM 00001 (recently renamed *Bacillus toyonensis*) – ISO 11133 recommended media and ID test control organism.

MM86 – NCTC® 7464 / ATCC® 10876 – **PHE** recommended media and ID test control organism.

Bacillus subtilis (*Bacillus subtilis* subsp. *spizizenii*):

MM29 – NCTC® 10400 / ATCC® 6633 / WDCM 00003 – used in antibiotic assays (fully sensitive), **PHE** recommended media and ID test control organism.



Bacteroides fragilis:

MM44 – NCTC® 9343 / ATCC® 25285 – type strain, **PHE** recommended strain for media and sensitivity test control.

Campylobacter jejuni (*Campylobacter jejuni* subsp. *jejuni*):

MM82 – NCTC® 11322 / ATCC® 29428 / WDCM 00156 – **PHE** recommended strain for media control.

MM36 – NCTC® 11351 / ATCC® 33560 – **EUCAST** recommended strain for susceptibility testing.

Candida albicans:

MM28 – NCPF® 3255 / ATCC® 2091 / WDCM 00055 – sensitivity control / industrial use.

MM42 – NCPF® 3179 / ATCC® 10231 / WDCM 00054 – pharmaceutical / media testing / **PHE** recommended strain for media control.

CRE ≡ ‘Carbapenem Resistant Enterobacteriaceae’ / CPE ≡ ‘Carbapenemase Producing Enterobacteriaceae’

There are 5 carbapenemases which are currently a significant problem in the UK – KPC, OXA-48, IMP, NDM and VIM – and PHE recommend that all clinically-significant Gram-negative bacteria should be routinely screened for carbapenemase production, using a recommended carbapenem² such as ertapenem or meropenem. Resistant isolates may be investigated further to determine which resistance mechanism is involved using the Modified Hodge Test, MALDI-TOF, PCR or a reference laboratory.

MM55 *Klebsiella pneumoniae* – NCTC® 13440 – produces a Class B VIM-1 Carbapenemase.

MM56 *Klebsiella pneumoniae* – NCTC® 13443 – produces a Class B NDM-1 Carbapenemase.

MM58 *Klebsiella pneumoniae* – NCTC® 13438 – produces a Class A KPC-3 Carbapenemase.

MM59 *Klebsiella pneumoniae* – NCTC® 13442 – produces a Class D OXA-48 Carbapenemase.

MM57 *Escherichia coli* – NCTC® 13476 – produces a Class B IMP Carbapenemase.

MM33 *Escherichia coli* – NCTC® 10418 / ATCC® 10536 – recommended by **PHE** as a negative control for CRE testing.



Citrobacter freundii:

MM27 – NCTC® 9750 / ATCC® 8090 – type strain.

Clostridium perfringens:

MM45 – NCTC® 8237 / ATCC® 13124 / WDCM 00007 – type strain. **PHE** recommended strain for food testing (Tryptose Sulphite Cycloserine agar – lactose and gelatin positive) and sensitivity test control. *Clostridium perfringens* is listed in Schedule 5 of the Anti-terrorism, Crime and Security Act 2001, and should be securely stored in accordance with the guidelines of the Act. However, MM45 is a type A strain, which does not produce the lethal epsilon toxin of potential interest to bioterrorists.

Clostridium sporogenes:

MM31 – NCTC® 532 / ATCC® 19404 / WDCM 00008 – used for media control. **PHE** recommended strain for media QC (lactose gelatin medium for ID of *C. perfringens* lactose negative and gelatin positive).

Enterobacter aerogenes:

MM26 – NCTC® 10006 / ATCC® 13048 / WDCM 00175 – type strain; used in water, paint and adhesive testing.

Enterobacter cloacae:

MM01 – NCTC® 13380 / ATCC® 23355 / WDCM 00082 – disinfectant control, media testing.

MM51 – NCTC® 13406 – **PHE** recommended strain for QC of AmpC (de-repressed) detection.

Enterococcus faecalis:

MM52 – NCTC® 13379 / ATCC® 51299 / WDCM 00085 – is vancomycin resistant (low-level VanB mediated) and also shows high-level resistance to aminoglycosides. It is used to confirm methodologies used to detect these resistances are working correctly. Lancefield group D.

MM17 – NCTC® 775 / ATCC® 19433 / WDCM 00009 – used in water industry and QC. **PHE** recommended strain for media control. Fully sensitive. Lancefield group D.

MM18 – NCTC® 12697 / ATCC® 29212 / WDCM 00087 – is fully sensitive to vancomycin and gentamicin. **PHE** recommended positive control strain for aesculin test. **CLSI, EUCAST** recommended media control for sulpha / trimethoprim testing and general susceptibility testing control. Lancefield group D.





Enterococcus hirae:

MM35 – NCTC® 13383 / ATCC® 10541 / WDCM 00011 – disinfectant control. Used in microbiological assays. Colonies are alpha-haemolytic on sheep blood agar.

***Escherichia coli* strains:**

MM02 – NCTC® 12241 / ATCC® 25922 / WDCM 00013 – **EUCAST**, **CLSI**, **PHE** recommended control strain for susceptibility testing (fully sensitive). Exhibits 2 colony types – the most prevalent type is slightly irregular, smooth and translucent. The secondary type appears more opaque. It is preferable to maintain cultures on agar as passage in broth can result in a change in MIC levels.



MM57 – NCTC® 13476 – CRE testing control; produces a Class B IMP Carbapenemase.

MM33 – NCTC® 10418 / ATCC® 10536 – (**PHE** recommended alternative to NCTC 12241) fully sensitive control strain. **PHE** recommended positive control for indole test, ONPG test, negative control for oxidase test, **PHE** recommended negative control for CRE and ESBL testing.

MM24 – NCTC® 11954 / ATCC® 35218 – beta-lactamase positive strain. **CLSI** recommended strain for susceptibility testing ONLY for penicillin / beta-lactamase inhibitor combinations. Sensitive to amoxicillin / clavulanic acid.

MM75 – NCTC® 9001 / ATCC® 11775 / WDCM 00090 – used in water / chemical industry. **PHE** recommended strain for media QC.

MM93 – NCTC® 12900 / ATCC® 700728 / WDCM 00014 – O157 strain (non-toxigenic). **PHE** recommended strain for media QC.

MM63 – NCTC® 11560 – beta-lactamase positive strain.

MM38 – NCTC® 12923 / ATCC® 8739 / WDCM 00012 – used in pharmaceutical / water industry. Three colony types: A) Entire, glistening, smooth and translucent. B) Entire, glistening smooth and opaque. C) Irregular, rough and translucent. The rough colonies appear after 48 hours incubation.

MM34 – NCTC® 13846 – Possesses the plasmid-mediated *mcr-1* colistin resistance mechanism gene and is recommended by **PHE** and **EUCAST** as a control for tests to detect this increasingly prevalent resistance, in conjunction with NCTC® 12241 / ATCC® 25922 (Selectrol strain MM02) as a negative control.

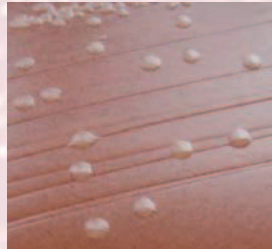
***Haemophilus influenzae* strains:**

MM81 - NCTC[®] 12699 / ATCC[®] 49247 – is a ‘BLNAR’ strain – (beta-lactamase non-producing ampicillin / amoxycillin resistant). These strains are important clinically because the susceptibility results obtained using conventional testing procedures maybe misleading in the case cephalosporins. **PHE**, **CLSI** recommended QC strain for susceptibility testing media.

MM98 – NCTC[®] 11931 – a fully sensitive strain. **PHE** recommended strain for porphyrin synthesis test, chocolate agar control.

MM100 – NCTC[®] 8468 / ATCC[®] 9334 / CCUG 23946 – another fully sensitive strain, which reportedly gives results which are easier to interpret when Mueller-Hinton medium is used in preference to Iso-Sensitest medium. MIC for amoxycillin is 0.5 mg/l.

MM37 – NCTC[®] 12975 / ATCC[®] 49766 – recommended by **EUCAST**.

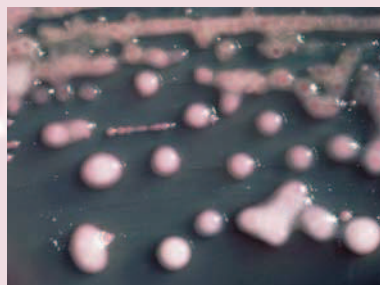


***Klebsiella* strains:**

MM04 *Klebsiella pneumoniae* – NCTC[®] 9633 / ATCC[®] 13883 / WDCM 00097 – type strain. Two colony types may be seen. The predominant type is entire and opaque. The secondary type is slightly smaller and translucent.

MM83 *Klebsiella pneumoniae* – NCTC[®] 13368 / ATCC[®] 700603 – ESBL-producing strain used as control for ESBL testing. There are two colony types.

MM55 *Klebsiella pneumoniae* – NCTC[®] 13440 – CRE testing control; produces a Class B VIM-1 Carbapenemase.



MM56 *Klebsiella pneumoniae* – NCTC[®] 13443 – CRE testing control; produces a Class B NDM-1 Carbapenemase.

MM58 *Klebsiella pneumoniae* – NCTC[®] 13438 – CRE testing control; produces a Class A KPC-3 Carbapenemase.

MM59 *Klebsiella pneumoniae* – NCTC[®] 13442 – CRE testing control; produces a Class D OXA-48 Carbapenemase.

MM88 *Klebsiella aerogenes* (*Raoultella planticola*) – NCTC[®] 9528 – used in water / pharmaceutical industry. **PHE** recommended negative control for Tryptone Bile X-Glucuronide agar and Yeast Extract agar.



Lactobacillus brevis:

MM76 – NCTC® 13386 / ATCC® 8287 – used in food industry.

Legionella pneumophila serogroup 1:

MM08 – NCTC® 11192 / ATCC® 33152 / WDCM 00107 – derived from strain isolated from first recognised outbreak of legionellosis in Philadelphia at the Legionnaires' Convention 1976

Listeria innocua:

MM92 – NCTC® 11288 / ATCC® 33090 / WDCM 00017 – type strain. Non-pathogenic.

Listeria monocytogenes:

MM87 – NCTC® 11994 / WDCM 00019 – type strain, **PHE** recommended positive control strain for Listeria detection in food. Serotype 4b, most common serovar isolated from human infections.

MM48 – NCTC® 7973 / ATCC® 35152 / WDCM 00109 – produces 2 phenotypes, one is beta-haemolytic and virulent, the other non-haemolytic and non-virulent. Serovar 1/2a.

MM77 – NCTC® 13372 / ATCC® 7644 – used in food microbiology Q.C. Colonies exhibit beta-haemolysis on sheep blood agar.

Neisseria gonorrhoeae:

MM96 – NCTC® 12700 / ATCC® 49226 – has low-level, but clinically relevant, resistance to penicillin – MIC of penicillin is 0.5 mg/l. **PHE** recommended control for susceptibility testing – methodology assesses the ability of testing to detect resistance rather than sensitivity; this strain has low-level, but clinically relevant, resistance to penicillin – MIC of penicillin is 0.5 mg/l. Some variation in size and texture of colonies may be observed. Increased CO₂ is helpful in growth.

MM05 – NCTC® 8375 / ATCC® 19424 – is fully sensitive – MIC of penicillin is 0.06 mg/l. **PHE** recommended strain for media QC.

Proteus mirabilis:

MM43 – NCTC® 13376 / ATCC® 14153 – pharmaceutical / disinfectant / media control.

MM68 – NCTC® 10975 – media control. **PHE** recommended control for motility test.

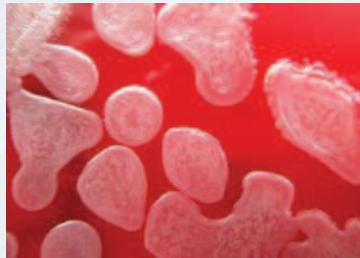


Proteus vulgaris:

MM09 – NCTC® 4175 / ATCC® 13315 – was the type strain, but is atypical and has been recognised as a separate species – *Proteus hauseri* – it is used for media control. Colonies are glistening with spreading edges.

***Pseudomonas aeruginosa* strains:**

MM10 – NCTC® 12903 / ATCC® 27853 / WDCM 00025 – is fully sensitive to anti-pseudomonal antibiotics (EUCAST susceptibility test control). 2 colony types may be observed: A) predominantly flat, spreading edges and rough surface; B) small and compact. Produces both fluorescein and pyocyanin pigments.



MM65 – NCTC® 10662 / ATCC® 25668 / WDCM 00114 – is fully sensitive. PHE recommended control strain for media control

MM40 – NCTC® 12924 / ATCC® 9027 / WDCM 00026 – used in water industry / disinfectant testing. Colonies on agar plates are entire, glistening and mucoid with a grainy surface. This strain also produces both fluorescein and pyocyanin pigments.

MM41 – NCTC® 13359 / ATCC® 15442 – used in water industry / disinfectant testing. May produce up to 3 different colony types. Pyocyanin is not produced.

Rhodococcus equi:

MM97 – NCTC® 1621 / ATCC® 6939 / WDCM 00028 – type strain.

Saccharomyces cerevisiae:

MM73 – NCPF® 3178 – PHE recommended strain for food testing and enumeration of yeasts and moulds.

MM50 – NCTC® 10716 / WDCM 00058 – used for QC of culture media and for antifungal susceptibility testing.

***Salmonella* serotypes:**

MM11 *Salmonella* Typhimurium – NCTC® 12023 / ATCC® 14028 / WDCM 00031 – (1,4,5,12: i: 1,2) Used for media/test QC. This is a common serotype from animals and from human infections.

The strains listed below are unusual serotypes, used to avoid any chance of confusion with strains commonly found in animals, food, etc, and are used to control media and detection methods in the food industry:

MM89 *Salmonella* Poona – NCTC® 4840 – (13,22: z: 1,6) PHE recommended control strain for food testing.

MM84 *Salmonella* Nottingham – NCTC® 7832 – (16: d: e,n,z15) PHE recommended control for water testing.

Serratia marcescens:

MM12 – NCTC® 13382 / ATCC® 8100 – used for disinfectant testing. PHE recommended negative control for indole test. Colonies are entire, glistening, smooth and translucent. Non-pigmented.

Staphylococcus aureus:

(A) Fully sensitive:

MM85 – NCTC® 6571 / ATCC® 9144 / WDCM 00035 – historically used for susceptibility testing ('Oxford staph'), but largely superseded by MM13 as it has unusually low MIC's and so is unrepresentative of normal range of Staph aureus strains. Sensitive to penicillin and ceftazidime / methicillin / oxacillin. **PHE** recommended coagulase, DNase and catalase positive control.

MM13 – NCTC® 12981 / ATCC® 25923 / WDCM 00034 – used in susceptibility and media testing/QC. Fully sensitive to all anti-staphylococcal antibiotics (including penicillin and methicillin / oxacillin). It is preferable to maintain cultures on agar as passage in broth can result in a change in MIC levels. Colonies are circular white to cream, convex to flat in elevation. After 48 hours incubation a few grey/translucent variants may be noted. Beta-haemolytic on sheep blood agar.

B) Penicillin resistant:

MM14 – NCTC® 12973 / ATCC® 29213 / WDCM 00131 – used for susceptibility testing, especially for automated methodology. **EUCAST**, **CLSI** strain. Sensitive to ceftazidime / methicillin / oxacillin. Penicillin resistant – weak beta-lactamase producer. Colonies are beta-haemolytic, and a golden-orange colour.

MM30 – NCTC® 7447 / ATCC® 6538P / WDCM 00033 – used for susceptibility testing/antibiotic assay, disinfectant testing. Ceftazidime / methicillin / oxacillin sensitive. Penicillin resistant. Colonies are weakly beta-haemolytic, coagulase positive and beta-lactamase negative.

(C) MRSA (ceftazidime / methicillin / oxacillin resistant):

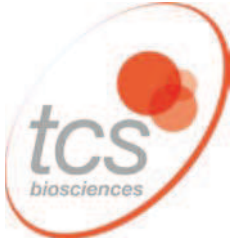
MM91 – NCTC® 13373 / ATCC® 43300 / WDCM 00211 (MRSA) – Possesses *mecA* gene but is hetero-resistant, (so as few as one per thousand cells demonstrate the resistance) and consequently has low-level ceftazidime / oxacillin / methicillin resistance (4.0 mg/l MIC of oxacillin, 8.0 mg/l MIC of ceftazidime – methicillin sensitive strains have MIC of 0.12-0.5 for oxacillin and 1-4 for ceftazidime.); it is used to confirm testing procedures for methicillin resistance are working and provides a more stringent test than testing with an MRSA which shows homogeneous resistance and has a much higher MIC. This organism will have a zone of inhibition reduced in size compared to a fully ceftazidime / oxacillin / methicillin sensitive strain (such as MM13). **CLSI** recommended strain for MRSA testing. There are two colony types: 1) Beta-haemolytic with a slight yellow tint. 2) Non-haemolytic and white.

MM64 – NCTC® 12493 / WDCM 00212 (MRSA) – possesses *mecA* gene and shows homogeneous resistance with MIC of >64 for methicillin, which produces high-level ceftazidime / methicillin / oxacillin resistance. **EUCAST** recommended strain. Instances have been reported where loss of the *mecA* gene has occurred during storage.

D) Other:

MM46 – NCTC® 10788 / ATCC® 6538 / WDCM 00032 – used in pharmaceutical industry for testing disinfectants etc. Usually yellow pigmented colonies, or can produce a white colonial variant. Beta-haemolytic.





Staphylococcus epidermidis:

MM15 – NCTC® 13360 / ATCC® 12228 / WDCM 00036 – used for media control / antibiotic assay. Colonies are small and beta-haemolytic.

Streptococcus agalactiae: (Beta-haemolytic Streptococcus group B)

MM16 – NCTC® 8181 / ATCC® 13813 – type strain, used for QC. PHE recommended negative control for aesculin test.

Streptococcus pneumoniae strains:

MM95 – NCTC® 12977 / ATCC® 49619 – has low-level, but clinically relevant, resistance to penicillin – this organism is used to assess detection of resistance rather than sensitivity. PHE recommended positive control for bile solubility test. CLSI, EUCAST recommended control strain for susceptibility testing. Serotype 19F.

MM19 – NCTC® 12695 / ATCC® 6303 – is fully sensitive. Colonies are mucoid and alpha-haemolytic. A few colonies may have an irregular edge. Serotype 3.



Streptococcus pyogenes:

MM20 – NCTC® 12696 / ATCC® 19615 – used for QC and media testing. Lancefield group A, beta-haemolytic. PHE recommended blood agar control.

Vibrio parahaemolyticus:

MM06 – NCTC® 10885 / WDCM 00185 – used for QC of media and ID testing. PHE recommended strain used mainly in the food industry.

Yersinia enterocolitica:

MM80 – NCTC® 12982 / ATCC® 9610 / WDCM 00038 – type strain, used for media control. Serotype O:8, which is a pathogenic serotype, commonest in USA.

References:

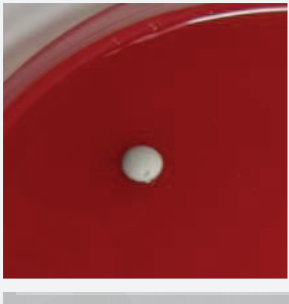
- 1 European Committee on Antimicrobial Susceptibility Testing (EUCAST). Routine and Extended Internal Quality Control for MIC Determination and Disc Diffusion. Version 7.0 - 01.01.2017.
- 2 UK Standards for Microbiology Investigations. Example Reference Strains for Microbiology Investigations Test Procedures: Bacteriology—Test Procedures | TP 1 | Issue No. 2 | 05.01.2015. Public Health England (PHE).
- 3 Performance Standards for Antimicrobial Disc Susceptibility Tests: Approved Standard—11th Edition. Clinical and Laboratory Standards Institute (CLSI).

How to use Selectrol®

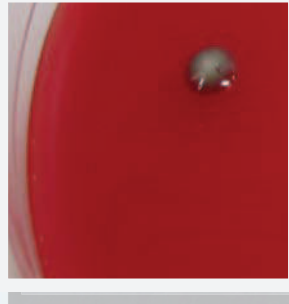
Always warm the vial to ambient temperature before opening.

Be sure to use non-selective culture media to revive the organisms.

For the more fastidious organisms, such as anaerobes, it is generally better to use agar rather than broth for revival.



Place disc on suitable growth medium such as blood agar



Leave disc for a few minutes to liquefy, then spread plate and incubate to produce isolated colonies



Obtain a stock culture which can be used to prepare an inoculum for biochemical and antibiotic susceptibility tests



Place disc in a small volume of a suitable broth medium such as brain-heart infusion



Allow disc a few minutes to dissolve, then spread aliquot onto a plate of suitable growth medium



Out-of-specification results

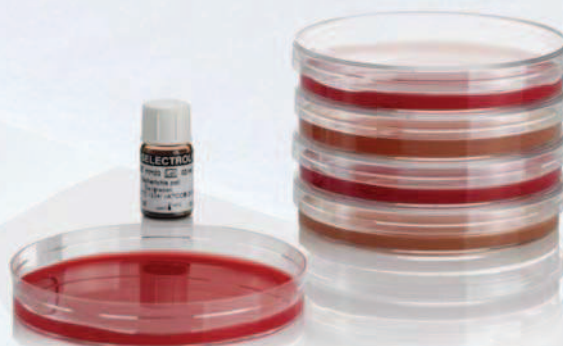
Laboratories use Selectrol® for Quality Control of culture media, biochemical identification tests and antimicrobial susceptibility testing. When a laboratory test result, an MIC or biochemical reaction, is unexpected or out-of-specification, the test should first be repeated to confirm it; an out-of-specification result is an indication that the testing procedure should be reviewed; it is not, in the first instance, a sign of a problem with the control organism.

If incorrect results are obtained on retesting, the explanation could be:

- The test procedure was not followed correctly – check standard operating procedures
- There is an instrumentation error – check calibration, mechanical functioning, etc
- There is a problem with the consumables – out of date, incorrect storage, etc
- The culture of the control organism has become contaminated

Technical Support

If no explanation for out-of-spec results can be found, but repeated tests still give unacceptable results, please contact TCS and / or your relevant reference laboratory or instrument manufacturer for advice. For example, contact AMRHAI at Colindale, London if MIC results are consistently outside the acceptable range. Please retain any remaining discs of organisms about which you have concerns so they can be returned to TCS and investigated alongside retained samples.



Preparing QC and Validation Spikes from Selectrol®

Preparing the spike

- Place a Selectrol® disc in Brain Heart Infusion (BHI) broth* or equivalent, and culture (typically for 18 hours) at the appropriate temperature for the organism (typically 37°C)
- Assume the count in the broth to be 10^8 organisms per ml ----- (A)
- Mix and transfer 100 μ l of (A) to 100 ml of saline or $\frac{1}{4}$ strength Ringer's solution -- (B)
- Mix and transfer 100 μ l of (B) to 10 ml of saline or $\frac{1}{4}$ strength Ringer's solution --- (C)
- Mix and transfer 100 μ l of (C) to your homogenised food sample.

Verifying the inoculum

- Pipette 5 x 10 μ l drops from (C) onto each of two agar plates for Miles and Misra counts.

Using the assumptions and dilutions above:

- (A) contains 10^8 organisms per ml
- (B) contains 10^5 organisms per ml
- (C) contains 10^3 organisms per ml

If the Miles and Misra counts indicate that the required count was not achieved:

- If the count was too high by a factor of 10, reduce the volume transferred from (A) to (B) from 100 μ l to 10 μ l
- If the count was too low by a factor of 10, increase the volume transferred from (A) to (B) from 100 μ l to 1 ml.

Keep a record of the correct dilutions for each organism type for future use. You will find that this method is very repeatable.

*Note: BHI broth will work for most of the Selectrol® organisms; however, for fastidious organisms an appropriate culture broth must be selected, e.g. Fastidious Anaerobe Broth for strictly anaerobic organisms.





Culture Collections

Cultures of microorganisms have been deposited and subsequently maintained in 589 collections in 68 countries, and many of the cultures are derived from the same original isolate; the history of each organism, its properties and names of the culture collections which hold it are detailed in the relevant catalogues and websites.

Some of the organisms have been selected and recommended by expert organisations to be supplied as controls for microbiological tests, and when the identical cultures are present in more than one collection they will have a specific designation for each, incorporating the abbreviation for the collection and a reference number.

For example:- *Staphylococcus aureus* NCTC 7447, widely recommended as a control for antimicrobial susceptibility testing, is held in 30 collections, and consequently the phenotypically and genotypically identical organism has 30 different references, such as ATCC 6538P, CIP 53.156, DSM 346 and so on.

In an effort to minimise potential confusion and help users find local sources of reference strains, the WFCC and the WDCM initiated a system that ascribes each recommended QC strain a reference number (WDCM 00001 onwards), cites all collections that contain it and provides contact details and each collection's unique reference. For example, the strain of *Staphylococcus aureus* NCTC 7447 (Selectrol® strain MM33) mentioned above is designated WDCM 00033.

***Staphylococcus aureus* WDCM 00033**

AHU 1142; **ATCC™ 6538P**; BCRC 10451 ; BTCC 209P; BU 395; CCM 2022; CCTM 596; CCUG 1828; CECT 240; CIP 53.156; CN 3784; CNCTC Mau 28/58; DSM 346; FIRDI 451; IAM 1011; IAM 12082; IEM Mau 28/58; IFO 12732; IFO 3061; IID 671; IMET 10904; JCM 2151; LMG 8195; NCIMB 8625; **NCTC 7447**; NRRL B-313; OUT 8232; PCI 1209; PZH 8/54; RIMD 3109007; VNIIA 209P;

Products derived from the cultures in the collections should be manufactured using the minimum number of sub-cultures, to minimise the possibility of alterations to the phenotype due to mutations. Ideally, as in the case of **Selectrol®**, a single sub-culture only is used, so the **Selectrol®** product is a 'first generation derivative' of a culture supplied by NCTC, and will be identical with regard to its properties and suitability for use in QC applications to a culture of the particular organism obtained from any of the other WDCM listed culture collections.

Every effort has been made to ensure the accuracy of the information in this document, however TCS makes no warranties, expressed or implied, regarding errors or omissions and assumes no legal liability or responsibility for loss or damage resulting from the use of information contained within.

Selectrol Strain Index

Strain Name	Designation	Code	WDCM
<i>Aspergillus brasiliensis</i>	NCPF [®] 2275 / ATCC [®] 16404	MM94	00053
<i>Bacillus cereus</i>	NCTC [®] 10320 / ATCC [®] 9634	MM21	00001
<i>Bacillus cereus</i>	NCTC [®] 7464 / ATCC [®] 10876	MM86	
<i>Bacillus subtilis</i>	NCTC [®] 10400 / ATCC [®] 6633	MM29	00003
<i>Bacteroides fragilis</i>	NCTC [®] 9343 / ATCC [®] 25285	MM44	
<i>Campylobacter jejuni</i>	NCTC [®] 11351 / ATCC [®] 33560	MM36	
<i>Campylobacter jejuni</i>	NCTC [®] 11322 / ATCC [®] 29428	MM82	00156
<i>Candida albicans</i>	NCPF [®] 3255 / ATCC [®] 2091	MM28	00055
<i>Candida albicans</i>	NCPF [®] 3179 / ATCC [®] 10231	MM42	00054
<i>Citrobacter freundii</i>	NCTC [®] 9750 / ATCC [®] 8090	MM27	
<i>Clostridium perfringens</i>	NCTC [®] 8237 / ATCC [®] 13124	MM45	00007
<i>Clostridium sporogenes</i>	NCTC [®] 532 / ATCC [®] 19404	MM31	00008
<i>Enterobacter aerogenes</i>	NCTC [®] 10006 / ATCC [®] 13048	MM26	00175
<i>Enterobacter cloacae</i>	NCTC [®] 13380 / ATCC [®] 23355	MM01	00082
<i>Enterobacter cloacae</i>	NCTC [®] 13406	MM51	
<i>Enterococcus faecalis</i>	NCTC [®] 775 / ATCC [®] 19433	MM17	00009
<i>Enterococcus faecalis</i>	NCTC [®] 12697 / ATCC [®] 29212	MM18	00087
<i>Enterococcus faecalis</i>	NCTC [®] 13379 / ATCC [®] 51299	MM52	00085
<i>Enterococcus hirae</i>	NCTC [®] 13383 / ATCC [®] 10541	MM35	00011
<i>Escherichia coli</i>	NCTC [®] 12241 / ATCC [®] 25922	MM02	00013
<i>Escherichia coli</i>	NCTC [®] 11954 / ATCC [®] 35218	MM24	
<i>Escherichia coli</i>	NCTC [®] 10418 / ATCC [®] 10536	MM33	
<i>Escherichia coli</i>	NCTC [®] 12923 / ATCC [®] 8739	MM38	00012
<i>Escherichia coli</i>	NCTC [®] 11560	MM63	
<i>Escherichia coli</i>	NCTC [®] 9001 / ATCC [®] 11775	MM75	00090
<i>Escherichia coli</i> CRE	NCTC [®] 13476	MM57	
<i>Escherichia coli</i> (mcr-1)	NCTC [®] 13846	MM34	
<i>Escherichia coli</i> O157 (non-toxigenic)	NCTC [®] 12900 / ATCC [®] 700728	MM93	00014
<i>Haemophilus influenzae</i>	NCTC [®] 8468 / ATCC [®] 9334	MM100	
<i>Haemophilus influenzae</i>	NCTC [®] 12975 / ATCC [®] 49766	MM37	
<i>Haemophilus influenzae</i>	NCTC [®] 12699 / ATCC [®] 49247	MM81	
<i>Haemophilus influenzae</i>	NCTC [®] 11931	MM98	
<i>Klebsiella aerogenes</i>	NCTC [®] 9528	MM88	
<i>Klebsiella pneumoniae</i>	NCTC [®] 9633 / ATCC [®] 13883	MM04	00097
<i>Klebsiella pneumoniae</i>	NCTC [®] 13368 / ATCC [®] 700603	MM83	
<i>Klebsiella pneumoniae</i> CRE	NCTC [®] 13440	MM55	
<i>Klebsiella pneumoniae</i> CRE	NCTC [®] 13443	MM56	
<i>Klebsiella pneumoniae</i> CRE	NCTC [®] 13438	MM58	

Selectrol Strain Index

Strain Name	Designation	Code	WDCM
<i>Klebsiella pneumoniae</i> CRE	NCTC [®] 13442	MM59	
<i>Lactobacillus brevis</i>	NCTC [®] 13386 / ATCC [®] 8287	MM76	
<i>Legionella pneumophila</i> serogroup 1	NCTC [®] 11192 / ATCC [®] 33152	MM08	00107
<i>Listeria innocua</i>	NCTC [®] 11288 / ATCC [®] 33090	MM92	00017
<i>Listeria monocytogenes</i>	NCTC [®] 7973 / ATCC [®] 35152	MM48	00109
<i>Listeria monocytogenes</i>	NCTC [®] 13372 ATCC [®] 7644	MM77	
<i>Listeria monocytogenes</i>	NCTC [®] 11994	MM87	00019
<i>Neisseria gonorrhoeae</i>	NCTC [®] 8375 / ATCC [®] 19424	MM05	
<i>Neisseria gonorrhoeae</i>	NCTC [®] 12700 / ATCC [®] 49226	MM96	
<i>Proteus mirabilis</i>	NCTC [®] 13376 / ATCC [®] 14153	MM43	
<i>Proteus mirabilis</i>	NCTC [®] 10975	MM68	
<i>Proteus vulgaris</i>	NCTC [®] 4175 / ATCC [®] 13315	MM09	
<i>Pseudomonas aeruginosa</i>	NCTC [®] 12903 / ATCC [®] 27853	MM10	00025
<i>Pseudomonas aeruginosa</i>	NCTC [®] 12924 / ATCC [®] 9027	MM40	00026
<i>Pseudomonas aeruginosa</i>	NCTC [®] 13359 / ATCC [®] 15442	MM41	
<i>Pseudomonas aeruginosa</i>	NCTC [®] 10662 / ATCC [®] 25668	MM65	00114
<i>Rhodococcus equi</i>	NCTC [®] 1621 / ATCC [®] 6939	MM97	00028
<i>Saccharomyces cerevisiae</i>	NCTC [®] 10716/ ATCC [®] 9763	MM50	00058
<i>Saccharomyces cerevisiae</i>	NCPF [®] 3178	MM73	
<i>Salmonella</i> Nottingham	NCTC [®] 7832	MM84	
<i>Salmonella</i> Poona	NCTC [®] 4840	MM89	
<i>Salmonella</i> Typhimurium	NCTC [®] 12023/ ATCC [®] 14028	MM11	00031
<i>Serratia marcescens</i>	NCTC [®] 13382 / ATCC [®] 8100	MM12	
<i>Staphylococcus aureus</i>	NCTC [®] 12981 / ATCC [®] 25923	MM13	00034
<i>Staphylococcus aureus</i>	NCTC [®] 12973 / ATCC [®] 29213	MM14	00131
<i>Staphylococcus aureus</i>	NCTC [®] 7447 / ATCC [®] 6538P	MM30	00033
<i>Staphylococcus aureus</i>	NCTC [®] 10788 / ATCC [®] 6538	MM46	00032
<i>Staphylococcus aureus</i>	NCTC [®] 6571 / ATCC [®] 9144	MM85	00035
<i>Staphylococcus aureus</i> (MRSA)	NCTC [®] 12493	MM64	00212
<i>Staphylococcus aureus</i> (MRSA)	NCTC [®] 13373 / ATCC [®] 43300	MM91	00211
<i>Staphylococcus epidermidis</i>	NCTC [®] 13360 / ATCC [®] 12228	MM15	00036
<i>Streptococcus agalactiae</i>	NCTC [®] 8181 / ATCC [®] 13813	MM16	
<i>Streptococcus pneumoniae</i>	NCTC [®] 12695 / ATCC [®] 6303	MM19	
<i>Streptococcus pneumoniae</i>	NCTC [®] 12977 / ATCC [®] 49619	MM95	
<i>Streptococcus pyogenes</i>	NCTC [®] 12696 / ATCC [®] 19615	MM20	
<i>Vibrio parahaemolyticus</i>	NCTC [®] 10885	MM06	00185
<i>Yersinia enterocolitica</i>	NCTC [®] 12982 / ATCC [®] 9610	MM80	00038

Selectrol Strains Listed by WDCM Number

WDCM	Strain Name	Designation	Code
00001	<i>Bacillus cereus</i>	NCTC [®] 10320 / ATCC [®] 9634	MM21
00003	<i>Bacillus subtilis</i>	NCTC [®] 10400 / ATCC [®] 6633	MM29
00007	<i>Clostridium perfringens</i>	NCTC [®] 8237 / ATCC [®] 13124	MM45
00008	<i>Clostridium sporogenes</i>	NCTC [®] 532 / ATCC [®] 19404	MM31
00009	<i>Enterococcus faecalis</i>	NCTC [®] 775 / ATCC [®] 19433	MM17
00011	<i>Enterococcus hirae</i>	NCTC [®] 13383 / ATCC [®] 10541	MM35
00012	<i>Escherichia coli</i>	NCTC [®] 12923 / ATCC [®] 8739	MM38
00013	<i>Escherichia coli</i>	NCTC [®] 12241 / ATCC [®] 25922	MM02
00014	<i>Escherichia coli</i> O157 (non-toxigenic)	NCTC [®] 12900 / ATCC [®] 700728	MM93
00017	<i>Listeria innocua</i>	NCTC [®] 11288 / ATCC [®] 33090	MM92
00019	<i>Listeria monocytogenes</i>	NCTC [®] 11994	MM87
00025	<i>Pseudomonas aeruginosa</i>	NCTC [®] 12903 / ATCC [®] 27853	MM10
00026	<i>Pseudomonas aeruginosa</i>	NCTC [®] 12924 / ATCC [®] 9027	MM40
00028	<i>Rhodococcus equi</i>	NCTC [®] 1621 / ATCC [®] 6939	MM97
00031	<i>Salmonella</i> Typhimurium	NCTC [®] 12023 / ATCC [®] 14028	MM11
00032	<i>Staphylococcus aureus</i>	NCTC [®] 10788 / ATCC [®] 6538	MM46
00033	<i>Staphylococcus aureus</i>	NCTC [®] 7447 / ATCC [®] 6538P	MM30
00034	<i>Staphylococcus aureus</i>	NCTC [®] 12981 / ATCC [®] 25923	MM13
00035	<i>Staphylococcus aureus</i>	NCTC [®] 6571 / ATCC [®] 9144	MM85
00036	<i>Staphylococcus epidermidis</i>	NCTC [®] 13360 / ATCC [®] 12228	MM15
00038	<i>Yersinia enterocolitica</i>	NCTC [®] 12982 / ATCC [®] 9610	MM80
00053	<i>Aspergillus brasiliensis</i>	NCPF [®] 2275 / ATCC [®] 16404	MM94
00054	<i>Candida albicans</i>	NCPF [®] 3179 / ATCC [®] 10231	MM42
00055	<i>Candida albicans</i>	NCPF [®] 3255 / ATCC [®] 2091	MM28
00058	<i>Saccharomyces cerevisiae</i>	NCTC [®] 10716 / ATCC [®] 9763	MM50
00082	<i>Enterobacter cloacae</i>	NCTC [®] 13380 / ATCC [®] 23355	MM01
00085	<i>Enterococcus faecalis</i>	NCTC [®] 13379 / ATCC [®] 51299	MM52
00087	<i>Enterococcus faecalis</i>	NCTC [®] 12697 / ATCC [®] 29212	MM18
00090	<i>Escherichia coli</i>	NCTC [®] 9001 / ATCC [®] 11775	MM75
00097	<i>Klebsiella pneumoniae</i>	NCTC [®] 9633 / ATCC [®] 13883	MM04
00107	<i>Legionella pneumophila</i> serogroup 1	NCTC [®] 11192 / ATCC [®] 33152	MM08
00109	<i>Listeria monocytogenes</i>	NCTC [®] 7973 / ATCC [®] 35152	MM48
00114	<i>Pseudomonas aeruginosa</i>	NCTC [®] 10662 / ATCC [®] 25668	MM65
00131	<i>Staphylococcus aureus</i>	NCTC [®] 12973 / ATCC [®] 29213	MM14
00156	<i>Campylobacter jejuni</i>	NCTC [®] 11322 / ATCC [®] 29428	MM82
00175	<i>Enterobacter aerogenes</i>	NCTC [®] 10006 / ATCC [®] 13048	MM26
00185	<i>Vibrio parahaemolyticus</i>	NCTC [®] 10885	MM06
00211	<i>Staphylococcus aureus</i> (MRSA)	NCTC [®] 13373 / ATCC [®] 43300	MM91
00212	<i>Staphylococcus aureus</i> (MRSA)	NCTC [®] 12493	MM64

Notes





www.tcsbiosciences.co.uk



TCS Biosciences Ltd

Botolph Claydon, Buckingham, MK18 2LR, United Kingdom

t: +44 (0) 1296 714222, f: +44 (0) 1296 714806, e: sales@tcsgroup.co.uk



PRODUCT
CATALOGUE

2022-2023

TABLE OF CONTENTS

Introduction	1
Vision, Objectives, Mission	1
Sites, Our Products	2
Standards, Our Markets	3
MILESTONES	4
COVID-19 TESTING KITS	5
VIRAL TRANSPORT MEDIUM KITS	6
LATEX KITS	7
TURBIDIMETRIC LATEX KITS	8
SYPHILIS KITS	8
FEBRILE ANTIGENS	9
BLOOD GROUPING REAGENTS.....	10
HEMATOLOGY TESTS	11
SICKLE CELL KITS	11
INFECTIOUS DISEASE RAPID TESTS	12
ANTIBODY TESTING	12
ANTIGEN TESTING	13
URINE REAGENT STRIPS	14
FERTILITY RAPID TESTS	15
KIDNEY FUNCTION RAPID TESTS	15
INFLAMMATION AND CANCER MARKERS	16
CARDIAC MARKERS RAPID TESTS	16
DOA RAPID TESTS	17
CLINICAL CHEMISTRY KITS	19
ALCOHOL TESTS	20
STAINS FOR HISTOLOGY & MICROBIOLOGY	21
ANTIBIOTIC SENSITIVITY DISCS	22
ELISA KITS	23
HORMONE ELISA KITS	23
TORCH ELISA KITS	24
INFECTIOUS DISEASES ELISA KITS	24
OTHER ELISA KITS	24
HOME TESTS	25
BLOOD GLUCOSE MONITORING SYSTEMS	26
CERTIFICATES	27
CON TACT US	28
INTERNATIONAL PRESENCE	29

INTRODUCTION

Atlas Medical GmbH was established in 1996 as a manufacturer and supplier of quality Diagnostic Reagents and Kits. Our products are sold in over 80 countries worldwide.

The company is located at the Cambridge Science Park, Cambridge, UK. In addition to the UK site, the company has offices in Germany and Turkey as well as two purpose-built modern facilities in both Jordan and Malaysia. We take quality assurance very seriously and strive to produce goods to the highest standards known in the industry, including, ISO13485 & CE mark and US FDA standards. Our R&D team constantly develops and innovates novel products that significantly contribute to the advancement of the Diagnostic Industry.

Vision

To be a major provider of quality medical diagnostic products to local, regional and international markets.

Objectives



High and Consistent Quality



Satisfied Customer



Continuous Improvement & Innovation



Care for the Environment & Working Conditions

Mission

Our mission is to develop, produce and provide our customers with high quality products and excellent customer services through deep understanding of customers' needs and perception, recruitment of high caliber professionals & technicians, adopting strict quality assurance and control procedures and embracing new scientific advancements in the medical lab diagnostic field.



Atlas Medical GmbH
Ludwig-Erhard-Ring 3
15827 Blankenfelde-Mahlow,
Berlin, Germany
Tel: +49 - 33708 – 3550 30
Email: amug@atlas-medical.com



Atlas Medical UK.
William James House, Cowley
Road, Cambridge, CB4 0WX, UK.
Tel.: +44 (0) 1223 858 910
Fax: +44 (0) 1223 858 524
Email: info@atlas-medical.com



Atlas Medlab
Aktarhüssam Mh.1. Değirmen Sk.
Değirmen İşhane No :9, D: 405 .
Osmangazi / Bursa/ Turkey
Tel: +90 552 366 21 71
Email: info@atlas-medical.com



Atlas Medical Jordan
Sahab Free Zone Area,
Amman 11512 Jordan
Tel: +962 6 4026468
Fax +962 6 4022588
Email : info@atlas-medical.com



Our Markets

Atlas Medical enjoys a good presence in many international markets. We take pride in our export activities through our dedicated export department. We actively participate in major industry-related exhibitions seeking keen representatives around the globe to sell and distribute our products in their respective countries. We are internationally represented in more than 80 of countries spanning in five continents: Europe, North America, South America, Africa and Asia. Our efforts will continue to increase our representation to include most markets around the globe.



Standards



Our products are manufactured in accordance to the standards as set in the European In-Vitro Diagnostic Directive 98/79/EC. This has led to the successful attainment of Annex IV Full Quality Assurance Certification and the declaration of conformity for CE marking purposes for many of our IVD products, either self-declared or through our Notified Body LNE/G-MED

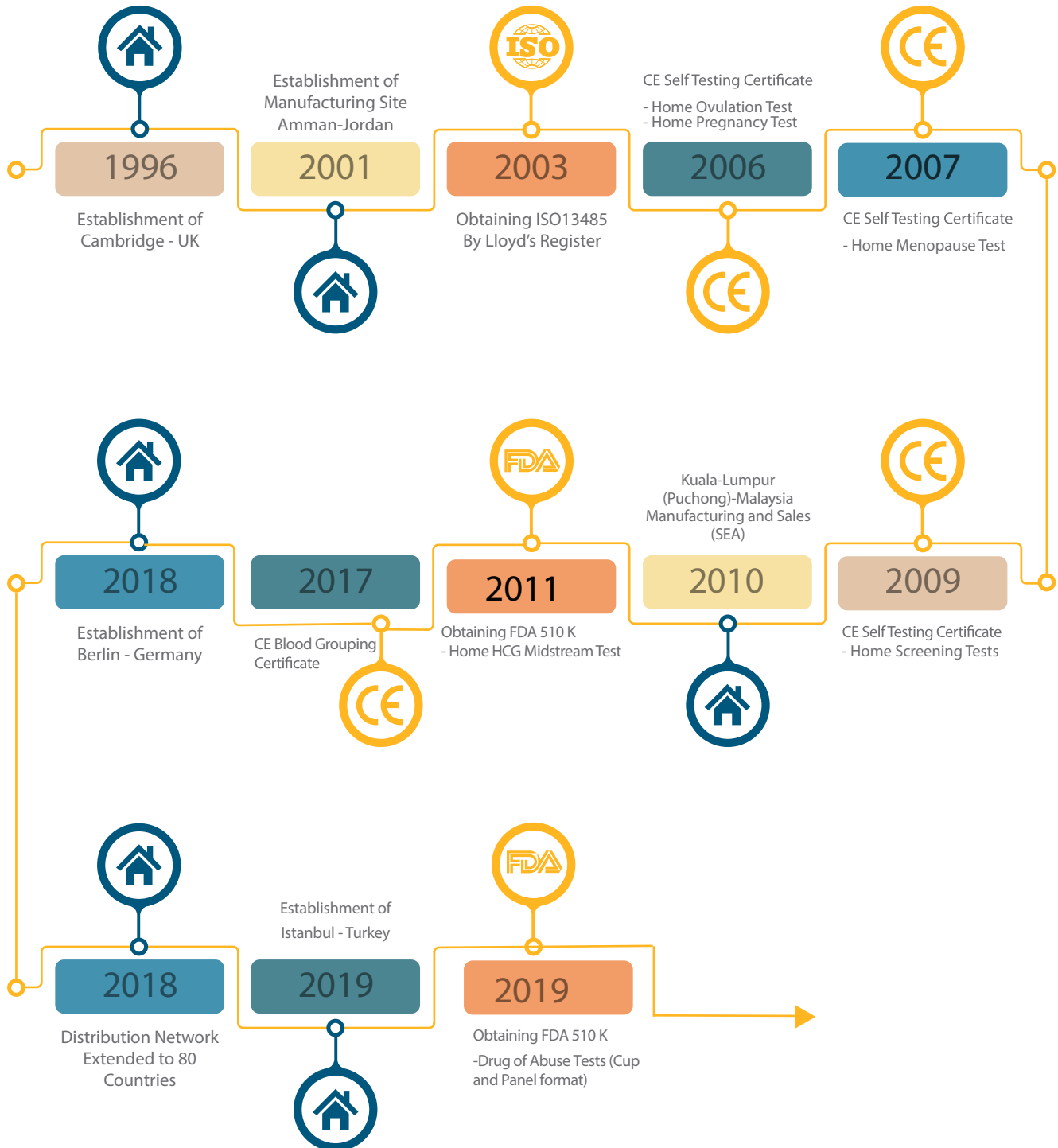


To complete the quality assurance scheme the company has put in place a robust Quality Management and Enhancement System that has concluded in the successful attainment of ISO13485: 2016 certificate



the company also adheres to the US-FDA regulations and had already FDA-cleared few products for the US market. Our products are registered in numerous countries.

MILESTONES



COVID-19 TESTING KITS

Overview

Atlas medical is introducing COVID-19 Real Time RT-PCR kit for the amplification and detection of the viral genetic material in patient specimen ,In addition Atlas Medical had introduced three new kits using the ELISA technique to detect the antibody response to COVID-19 infection. Detecting antibodies to SARS-CoV-2 virus could tell if a patient has been infected with COVID-19, either currently or in the past.



Item Code	Item Description	Sizes
8.14.45.0096	COVID-19 Real Time RT-PCR Test	96 Tests /Kits
8.14.45.0096	COVID-19 Total Ab Elisa Kit	96 Tests /Kits
8.14.46.0096	COVID-19 IgM Elisa Kit	96 Tests /Kits
8.14.47.0096	COVID-19 S1-RBD IgG Elisa Kit	96 Tests /Kits

Features

- Reverse-Transc RT-PCR is a special version used when RNA is being detected
- Atlas RT-PCR testing kits are fairly quick, sensitive ,reliable and can detect current infections of disease.
- Atlas ELISA kits are based on a simple and high sensitive laboratory technique, results can typically be produced within 1 to 2 hours from the moment of collecting the nasal swab sample .



COVID-19 RAPID TESTING KITS

Overview

Atlas Medical offers COVID-19 Rapid Test as a quick screening tool for the detection of the presence of SARS-CoV-2 virus in Nasopharyngeal swabs,"COVID-19 Antigen testing kit" , in addition Atlas medical offers" COVID-19 IgG/IgM Antibody Testing kit " as a screening tool for the human body response to the infection with the virus .



Item Code	Item Description	Sizes
8.66.00.0.0001 8.66.00.0.0020	COVID-19 IgM /IgG Test Cassette, Whole Blood/ Serum/Plasma ,Individually Pouched	Bulk 20 Tests/Box
8.66.01.0.0001 8.66.01.0.0020	COVID-19 Antigen Test Cassette, Nasal Swab, Individually Pouched	Bulk 20 Tests/Box
8.66.02.0.0001 8.66.02.0.0020	COVID-19 Combo Antigen & Influenza, A+B Test Individually Pouched	Bulk 20 Tests/Box
8.66.04.0.0020	COVID-19 Neutralizing Antibody Rapid Test Cassette ,Whole Blood /Serum/Plasma, Individually Pouched	20 Tests/Box

Features

- COVID-19 rapid test kits are based on Lateral Flow Immuno-Chromatographic Assay.
- Reliable ,easy to use with a short testing time of 10-15 minutes per each sample.
- The kits are conveniently packed in different sizes of 20,25 or 100 tests per kit including the necessary test accessories to perform the assay .

VIRAL TRANSPORT MEDIUM KITS

Overview

As a result of the current worldwide crises such as the COVID-19 pandemic and other worldwide health pandemic that are caused from malaria, Influenza and chlamydia, Atlas medical had come up with Viral transport media. The Media is used for facilitating the testing procedures by preserving the sample through the collection and transport process of the clinical samples containing viruses; including SARS-CoV-2 (COVID-19) and other viruses, in active form from collection site to the testing laboratory.

Features

- Atlas Medical offers VTM that allows the safe transfer of viruses for further research, including diagnostic tests, and molecular biology techniques
- Atlas VTM can come either as a biological format "activated product (VTM)" or in a chemical format "In Activated product (IVTM)".
- Atlas VTM maintain the viral structure and activity over a wide temperature range and suppress "
- Atlas viral transport medium is stable at room temperature
- Atlas VTM kits are conveniently packed in different sizes of 50, 100 tube per kit with flocked swabs



Item Code	Item Description	Sizes
8.64.02.0.0050 8.64.02.0.0100	Viral Transport Medium (VTM) with Flocked, Swab, Individually Pouched	50 Tube/Kit 100 Tube/Kit
8.64.03.0.0050 8.64.03.0.0100	Viral Transport Medium (In Activating) with Flocked Swab, (3 ml /vial)	50 Tube/Kit 100 Tube/Kit



LATEX KITS



Overview

Latex kits offer a quick and simple assay to diagnose a range of pathogens and medical conditions. The assay is based on an immunological reaction between the detected analyte in the sample and its corresponding antibody or antigen already coated on latex particles.

Features

- 🔗 They cover a selection of routine tests in serology and microbiology.
- 🔗 They are conveniently packed in sizes of 50 or 100 tests and includes all the necessary reagents, controls, stirrers and slides to conduct the test.
- 🔗 Affordable, easy to use, dependable and offer a clear and visible agglutination for doubt-free results.

- 🔗 Some Latex Kits come with a Buffer.

Item Code	Item Description	Sizes
8.00.00.0.0050 8.00.00.0.0100	CRP Latex Kit	50 Tests 100 Tests
8.00.01.0.0050 8.00.01.0.0100	CRP Latex Kit with Buffer	50 Tests 100 Tests
8.00.02.0.0050 8.00.02.0.0100	ASO Latex Kit	50 Tests 100 Tests
8.00.03.0.0050 8.00.03.0.0100	ASO Latex Kit with Buffer	50 Tests 100 Tests
8.00.04.0.0050 8.00.04.0.0100	RF Latex Kit	50 Tests 100 Tests
8.00.05.0.0050 8.00.05.0.0100	RF Latex Kit with Buffer	50 Tests 100 Tests
8.00.07.0.0050 8.00.07.0.0100	hCG Latex Kit	50 Tests 100 Tests
8.00.11.0.0050 8.00.11.0.0100	SLE Latex Kit	50 Tests 100 Tests
8.00.16.0.0050 8.00.16.0.0100	Rota Virus Latex Kit	50 Tests 100 Tests
8.00.17.0.0050 8.00.17.0.0100	D-Dimer Latex Kit	50 Tests 100 Tests
8.00.21.0.0050 8.00.21.0.0100	Waler Rose Kit	50 Tests 100 Tests
8.00.08.0.0050 8.00.08.0.0100	IM Latex Kit	50 Tests 100 Tests
8.00.12.0.0050 8.00.12.0.0100	Staphylococcus Latex Kit	50 Tests 100 Tests
8.00.13.0.0300	Streptococcus Latex Kit	50 Tests



Item Code	Item Description	Sizes
8.00.09.0.0050 8.00.09.0.0100	Toxo Latex Kit	50 Tests 100 Tests
8.00.10.0.0050 8.00.10.0.0100	Toxo Latex Kit with Buffer	50 Tests 100 Tests
8.00.14.0.0100	Rubella Latex Kit	100 Tests

TURBIDIMETRIC LATEX KITS

Overview

The turbidimetric assay is based on the agglutination reaction between latex particles coated with antibody and the antigen in solution. The intended use for Turbilatex products is to detect and quantify the antigen present in human serum or plasma samples.



Features

- Atlas Medical offers a dynamic range of Turbidimetric Latex Kits which are conveniently packed in sizes of 50, 100 and 250 tests and include all the necessary accessories.

Item Code	Item Description	Sizes
8.44.00.0.0050	RF Turbidimetric Latex Kit	50 Tests
8.44.00.0.0250		250 Tests
8.44.01.0.0050	CRP Turbidimetric Latex Kit	50 Tests
8.44.01.0.0100		100 Tests
8.44.01.0.0250		250 Tests
8.44.02.0.0050	ASO Turbidimetric Latex Kit	50 Tests
8.44.02.0.0100		100 Tests
8.44.02.0.0250		250 Tests
8.44.03.0.0050	D-Dimer Turbidimetric Latex Kit	50 Tests
8.44.03.0.0100		100 Tests
8.44.03.0.0250		250 Tests
8.44.04.0.0050	Microalbumine Turbilatex	50 Tests
8.44.05.0.0050	Ferritin Turbilatex	50 Tests
8.44.06.0.0050	Transferrin Turbilatex (TRF)	50 Tests

SYPHILIS KITS

Overview

Atlas Medical offers a number of assays to detect Syphilis that include: TPHA kits which are used for the detection of antibodies to Treponema pallidum in human Serum or plasma using micro haemagglutination ; VDRL and RPR kits which are based on non-Treponemal flocculation to detect reagin antibodies in serum or plasma .



Item Code	Item Description	Sizes
8.00.18.0.0100	RPR Carbon Antigen Kit	100 Tests
8.00.18.0.0250		250 Tests
8.00.18.0.0500		500 Tests
8.00.19.0.0050	TPHA Kit	50 Tests
8.00.19.0.0100		100 Tests
8.00.19.0.0200		200 Tests
8.00.20.0.0250	VDRL Kit	250 Tests
8.00.20.0.0500		500 Tests
8.00.20.0.2500		2500 Tests
8.00.20.1.0250	VDRL Kit with controls	250 Tests
8.00.20.1.2500		2500 Tests

Features

- Easy to use, affordable and conveniently packed in different sizes to suit all needs.
- They include all the necessary reagents/devices, controls, stirrers and slides to conduct the test



FEBRILE ANTIGENS



Overview

Febrile antigen kits are based on bacterial suspensions that agglutinate in the presence of antibodies formed in human infection by certain fever-causing microbial agents. In positive samples, the agglutination is macroscopically visible at certain antibody levels in serum. These antigen reagents are used for the qualitative and semi quantitative febrile screening purposes.

Features

- Atlas Medical Febrile Antigen kits contain various types of antigens for Brucella, Proteus, Salmonella typhi and paratyphi, and their controls as needed.
- Atlas Medical Febrile Antigen kits are competitively priced and easy to use, and give clear results within 2 minutes



Item Code	Item Description	Sizes
8.01.17.0.0050	Febrile Antigen Set (10 Antigens: Salmonella OA, OB, OC, OD, HA, HB, HC, HD, Brucella abortus, melitensis)	10x5 ml
8.01.17.1.0050	Febrile Antigen Set (10 Antigens: Salmonella OA, OB, OC, OD, HA, HB, HC, HD, Brucella abortus, melitensis) with 3x1.0ml Controls	10x5 ml
8.01.18.0.0030	Salmonella Antigen Set, Widal Kit (6 Antigens: OA, OB, OD, HA, HB, HD)	6x5 ml
8.01.18.1.0030	Salmonella Antigen Set, Widal Kit (6 Antigens: OA, OB, OD, HA, HB, HD) with 2x1.0ml Controls	6x5 ml
8.01.19.0.0001 8.01.19.0.0005	Febrile Antigens Positive Control	1 ml/vial 5 ml/vial
8.01.20.0.0001 8.01.20.0.0005	Febrile Antigen Negative Control	1 ml/vial 5 ml/vial



Item Code	Item Description	Sizes
8.01.00.0.0005 8.01.00.0.0050 8.01.00.0.0100	Brucella Rose Bengal Kit	5ml/vial 50 Tests 100 Tests
8.01.01.0.0005 8.01.01.1.0040 8.01.01.0.0050	Salmonella OA Reagent	5 ml/vial 8x5 ml 10x5 ml
8.01.02.0.0005 8.01.02.1.0040 8.01.02.0.0050	Salmonella OB Reagent	5 ml/vial 8x5 ml 10x5 ml
8.01.03.0.0005 8.01.03.1.0040 8.01.03.0.0050	Salmonella OC Reagent	5 ml/vial 8x5 ml 10x5 ml
8.01.04.0.0005 8.01.04.1.0040 8.01.04.0.0050	Salmonella OD Reagent	5 ml/vial 8x5 ml 10x5 ml
8.01.05.0.0005 8.01.05.1.0040 8.01.05.0.0050	Salmonella HA Reagent	5 ml/vial 8x5 ml 10x5 ml
8.01.06.0.0005 8.01.06.1.0040 8.01.06.0.0050	Salmonella HB Reagent	5 ml/vial 8x5 ml 10x5 ml
8.01.07.0.0005 8.01.07.1.0040 8.01.07.0.0050	Salmonella HC Reagent	5 ml/vial 8x5 ml 10x5 ml
8.01.08.0.0005 8.01.08.1.0040 8.01.08.0.0050	Salmonella HD Reagent	5 ml/vial 8x5 ml 10x5 ml
8.01.10.0.0005 8.01.10.1.0040	Brucella Abortus Reagent	5 ml/vial 8x5 ml
8.01.11.0.0005 8.01.11.1.0040	Brucella Melitensis Reagent	5 ml/vial 8x5 ml
8.01.12.0.0005 8.01.12.1.0040	Proteus OX2 Reagent	5 ml/vial 8x5 ml
8.01.13.0.0005 8.01.13.1.0040	Proteus OX19 Reagent	5 ml/vial 8x5 ml
8.01.14.0.0005 8.01.14.1.0040	Proteus OXK Reagent	5 ml/vial 8x5 ml
8.01.15.0.0010	Brucella Antigen Kit (Brucella melitensis, Brucella abortus)	2 vials/Box
8.01.15.1.0010	Brucella Antigen Kit with Controls (Brucella melitensis, Brucella abortus, 2x1.0 ml Controls)	2 vials/Box
8.01.15.2.0010	Brucella Antigen Kit with Controls, (5ml Brucella melitensis, 5ml Brucella abortus, 2x0.5 ml Controls)	2 vials/Box
8.01.16.0.0040	Salmonella Antigen Set (8 Antigens: OA, OB, OC, OD, HA, HB, HC, HD)	8x5 ml
8.01.16.1.0040	Salmonella Antigen Set (8 Antigens: OA, OB, OC, OD, HA, HB, HC, HD) with 2x1.0 ml Controls	8x5 ml
8.01.16.2.0040	Salmonella Antigen set (8 Antigens: OA, OB, OC, OD, HA, HB, HC, HD) with 2x0.5ml Controls	8x5 ml

BLOOD GROUPING REAGENTS

Overview

Blood Grouping reagents are used for the identification of blood types. The test procedure is based on the agglutination principle, where red cells possessing the typing antigen agglutinate in the presence of the corresponding antibody in the testing reagent indicating the presence of the tested antigen. No agglutination indicates the absence of the tested antigen.



Features

- Atlas Medical ABO reagents are prepared from In-Vitro culture supernatants of hybridized immunoglobulin-secreting mouse cell lines.
- The reagents are formulated and optimized for use in tube and slide methods.
- Atlas Medical provides high quality blood grouping reagents that are accurate, easy to use, competitively priced, and conveniently packed in different sizes and options.



Item Code	Item Description	Sizes
8.02.14.0.0010	Anti-D Monoclonal (IgM), Clone 1, 10ml/vial	10 ml/vial
8.02.15.0.0010	Anti-D Monoclonal (IgM), Clone 2, 10ml/vial	10 ml/vial
8.02.16.0.0005	Anti-A1, Lectin (Dolichosbiflorus), 5ml/vial	5 ml/vial
8.02.17.0.0005	Anti-H, Lectin (Ulexeuropaeus), 5ml/vial	5 ml/vial
8.02.18.0.0005	Anti-C Monoclonal, 5ml/vial	5 ml/vial
8.02.19.0.0005	Anti-c Monoclonal, 5ml/vial	5 ml/vial
8.02.20.0.0005	Anti-E Monoclonal, 5ml/vial	5 ml/vial
8.02.21.0.0005	Anti-e Monoclonal, 5ml/vial	5 ml/vial
8.02.22.0.0005	Anti-C+D+E Monoclonal, 5ml/vial	5 ml/vial
8.02.27.0.0002	Anti-Fya, Human, 2ml/vial	2 ml/vial
8.02.28.0.0002	Anti-Fyb, Human, 2ml/vial	2 ml/vial
8.02.29.0.0002	Anti-k, Human, 2ml/vial	2 ml/vial
8.02.30.0.0002	Anti-Kpa, Human, 2ml/vial	2 ml/vial
8.02.31.0.0002	Anti-Kpb, Human, 2ml/vial	2 ml/vial
8.02.32.0.0002	Anti-Jka, Human, 2ml/vial	2 ml/vial
8.02.35.0.0002	Anti-Lub, Human, 2 ml/vial	2 ml/vial
8.02.36.0.0005	Anti-K Monoclonal, 5ml/vial	5 ml/vial
8.02.54.0.0002	Anti-Cw, 2 ml/vial	2 ml/vial



Item Code	Item Description	Sizes
8.02.00.0.0010 8.02.00.1.0100	Anti-A Monoclonal reagent (titer: 1/512)	10 ml/vial 10x10 ml
8.02.01.0.0010 8.02.01.1.0100	Anti-B Monoclonal Reagent (Titer: 1/512)	10 ml/vial 10x10 ml
8.02.02.0.0010 8.02.02.1.0100	Anti-AB Monoclonal Reagent (Titer: 1/512)	10 ml/vial 10x10 ml
8.02.03.0.0010 8.02.03.1.0100	Anti-D IgG/IgM Blend Reagent (Titer: 1/128)	10 ml/vial 10x10 ml
8.02.04.0.0010 8.02.04.0.0100	Anti-A Monoclonal Reagent (Titer: 1/256)	10 ml/vial 10x10 ml
8.02.05.0.0010 8.02.05.0.0100	Anti-B Monoclonal Reagent (Titer: 1/256)	10 ml/vial 10x10 ml
8.02.06.0.0010 8.02.06.1.0100	Anti-AB Monoclonal Reagent (Titer: 1/256)	10 ml/vial 10x10 ml
8.02.07.0.0010 8.02.07.1.0100	Anti-D IgG/IgM Blend Reagent (Titer: 1/64)	10 ml/vial 10x10 ml
8.02.08.0.0010 8.02.08.1.0100	Bovine Albumin 22%	10 ml/vial 10x10 ml
8.02.09.0.0010 8.02.09.1.0100	Bovine Albumin 30%	10 ml/vial 10x10 ml
8.02.10.0.0010 8.02.10.1.0100	Anti-Human Globulin (Green) (Titer 1/512)	10 ml/vial 10x10 ml
8.02.11.0.0010 8.02.11.1.0100	Anti-Human Globulin (Green) (Titer 1/256)	10 ml/vial 10x10 ml
8.02.47.0.0030	ABO Set (Anti-A (1/512), Anti-B (1/512), Anti-D (1/128))	3x10 ml
8.02.47.1.0030	ABO Set (Anti-A (1/265), Anti-B (1/265), Anti-D (1/64))	3x10 ml
8.02.49.0.0040	ABO Set (Anti-A (1/256), Anti-B (1/256), Anti-AB (1/256), Anti-D (1/64))	4x10 ml
8.02.53.0.0040	ABO Set (Anti-A (1/512), Anti-B (1/512), Anti-AB (1/512) Anti-D (1/128))	4x10 ml
8.02.05.6.0030	ABO Set (Anti-A (1/256), Anti-B (1/256), Anti-D (1/64))	3x10ml
8.02.05.7.0020	ABO Set: Anti-A (1/256), Anti-B (1/256)	2x10ml
8.02.52.0.0010 8.02.52.0.0100	Rh-D Negative Control	10 ml/vial 10x10 ml
8.02.63.1.0010 8.02.63.0.0100	Antibody Enhancement Solution (LISS)	10 ml/vial 10x10 ml
8.02.23.0.0002	Anti-M, Human, 2ml/vial	2 ml/vial
8.02.24.0.0002	Anti-N, Lectin (Viciagraminea), 2ml/vial	2 ml/vial
8.02.25.0.0002	Anti-S, Human, 2ml/vial	2 ml/vial
8.02.26.0.0002	Anti-s, Human, 2ml/vial	2 ml/vial
8.02.34.0.0002	Anti-Lua, Human, 2ml/vial	2 ml/vial
8.02.37.0.0002	Anti-Lea, Monoclonal, 2ml/vial	2 ml/vial
8.02.38.0.0002	Anti-Leb, Monoclonal, 2ml/vial	2 ml/vial
8.02.39.0.0002	Anti-P1, Monoclonal, 2ml/vial	2 ml/vial

HEMATOLOGY TESTS

Overview

Atlas Medical supplies coagulation reagents. The coagulation reagents include PT, PTT and fibrinogen in liquid formats and in various sizes to suit most lab applications. The range also includes normal and abnormal coagulation controls.

Features

- Some kits include normal and abnormal controls.
- The kit comes in sizes of 50 and 100 tests.
- Atlas Medical provides high quality coagulation reagents that are accurate, easy to use, competitively priced, and conveniently packed in different sizes and options.



Hemoglobin Reagents

Item Code	Item Description	Sizes
8.02.46.1.0500	Drabkins Reagent, 40x (White Plastic Bottle)	50ml/Bottle
8.02.46.1.1000		2x50ml
8.02.46.1.3000		6x50ml
8.02.50.0.0010 8.02.50.0.0050	Haemoglobin Standard	10ml/vial 50ml/Bottle



Co-agglutination Reagents			
Item Code	Item Description	Sizes	
8.02.40.1.0010 8.02.40.1.0050 8.02.40.1.0100	PT Calcium Rabbit Brain Thromboplastin, Liquid	2ml (20 Tests) 5ml (50 Tests) 10ml (100 Tests)	
8.02.41.1.0040 8.02.41.1.0050 8.02.41.1.0100		APTT (PTT) Micronised Silica Platelet Substitute	2ml (40 Tests) 2.5ml (50 Tests) 5ml (100 Tests)
8.02.44.0.0040 8.02.44.0.0100			PT Kit with Normal Control
8.02.45.0.0080 8.02.45.0.0200	APTT (PTT) Kit with Normal Control		
8.02.48.0.0010 8.02.48.0.0100		Calcium Chloride, 25 mM	10ml/vial 10ml/vial / 10 Vials / Box
8.02.60.0.0006	Normal Coagulation Control		6x1ml
8.02.61.0.0006	Abnormal Coagulation Control	6x1ml	
8.02.69.0.0005	Fibrinogen Reagent	5ml/vial	
8.02.45.1.0080	APTT (PTT) Kit (Calcium Chloride reagent + Normal Control)	80 Tests	
8.02.64.0.0006	Normal & Abnormal Coagulation Control	3x1ml	
8.02.69.0.0100	Fibrinogen Test kit KIT	100 Tests	



SICKLE CELL KITS

Overview

Sickle cell disease (also called sickle cell anemia) is an inherited blood disorder that affects red blood cells. The sickle cell gene causes the body to produce abnormal hemoglobin.

Features

- Atlas Sickle Cell Kits is a qualitative solubility test for Sickle Haemoglobin.
- The test can be performed in two ways:
 - A screening test to detect sickle haemoglobin (HbS)
 - A centrifugation test to differentiate the sickle cell trait (AS) from sickle cell anaemia (SS).



Item Code	Item Description	Sizes
8.02.67.0.0050	Sickle Cell Kit, 50 Tests	2x50ml Buffer + 2 vials of Sodium Dithionate
8.02.67.0.0100	Sickle Cell Kit, 100 Tests	4x50ml Buffer, 4 vials of Sodium Dithionate
8.02.68.0.0001 8.02.68.1.0001	Sickle Cell positive & negative control set	1ml each 0.5 ml each

INFECTIOUS DISEASE RAPID TESTS

ANTIBODY TESTING

Overview

Atlas Medical offers an extensive range of lateral flow immunoassay tests for the rapid detection of antibodies and antigens in human samples (blood, serum, plasma, urine, oral swabs, nasal swabs, and feces). This range includes tests to detect a wide variety of viruses, microorganisms and parasites.



Features

- Atlas Medical infectious disease rapid tests are reliable, accurate and supplied in both cassette and strip formats.
- The kits are conveniently packed in different sizes of 20, 25, 30, 40, 50 and 100 tests per kit and include the necessary test accessories to perform the assay.

RAPID TESTS



Item Code	Item Description	Sizes
8.04.27.0.0001 8.04.27.0.0020	HIV 1/2 Antibody Test Cassette, Whole Blood/Serum/Plasma, Individually Pouched	Bulk 20 Tests/Box
8.04.28.0.0001 8.04.28.0.0020	HIV 1/2 Antibody Test Cassette, Serum/Plasma, Individually Pouched	Bulk 20 Tests/Box
8.04.29.0.0001 8.04.29.0.0100	HIV 1/2 Antibody Test Strip, Serum/Plasma, Individually Pouched	Bulk 100 Tests/Box
8.04.30.0.0001 8.04.30.0.0020	HCV Antibody Test Cassette, Whole Blood/Serum/Plasma, Individually Pouched	Bulk 20 Tests/Box
8.04.31.0.0001 8.04.31.0.0020	HCV Antibody Test Cassette, Serum/Plasma, Individually Pouched	Bulk 20 Tests/Box
8.04.32.0.0001 8.04.32.0.0100	HCV Antibody Test Strip, Serum/Plasma, Individually Pouched	Bulk 100 Tests/Box
8.04.35.0.0001 8.04.35.0.0020	HBs Antibody Test Cassette, Serum/Plasma, Individually Pouched	Bulk 20 Tests/Box
8.04.36.0.0001 8.04.36.0.0100	HBs Antibody Test Strip, Serum/Plasma, Individually Pouched	Bulk 100 Tests/Box
8.04.107.0.0040	Toxo IgG test cassette individually packed	40 Tests/Box



Item Code	Item Description	Sizes
8.04.20.0.0001 8.04.20.0.0020	H.pylori Antibody Test Cassette, Whole Blood/Serum/Plasma, Individually Pouched	Bulk 20 Tests/Box
8.04.21.0.0001 8.04.21.0.0020	H.pylori Antibody Test Cassette, Serum/Plasma, Individually Pouched	Bulk 20 Tests/Box
8.04.22.0.0001 8.04.22.0.0100	H.pylori Antibody Test Strip, Serum/Plasma, Individually Pouched	Bulk 100 Tests/Box
8.04.41.0.0001 8.04.41.0.0020	Syphilis Antibody Test Cassette, Whole Blood/Serum/Plasma, Individually Pouched	Bulk 20 Tests/Box
8.04.42.0.0001 8.04.42.0.0020	Syphilis Antibody Test Cassette, Serum/Plasma, Individually Pouched	Bulk 20 Tests/Box
8.04.43.0.0001 8.04.43.0.0100	Syphilis Antibody Test Strip, Serum/Plasma, Individually Pouched	Bulk 100 Tests/Box
8.16.16.0.0001 8.16.16.0.0020	TB Test Cassette, Serum/Plasma, Individually Pouched	Bulk 20 Tests/Box
8.16.16.1.0020 8.16.16.1.0025	TB Test Cassette, Whole Blood, Individually Pouched	20 Tests/Box 25 Tests/Box



Item Code	Item Description	Sizes
8.42.47.0.0020	HAV IgM Test Cassette, Individually Pouched	20 Tests/Box
8.04.44.0.0001 8.04.44.0.0020	Dengue IgG/IgM Test Cassette, Whole Blood/Serum/Plasma, Individually Pouched	Bulk 20 Tests/Box

INFECTIOUS DISEASE RAPID TESTS

ANTIGEN TESTING



STOOL SAMPLE		
Item Code	Item Description	Sizes
8.04.23.1.0020	H.pylori Antigen Test Cassette, Stool Sample, Individually Pouched	20 Tests/Box
8.04.24.1.0025	H.pylori Antigen Test Strip, Stool Sample, Individually Pouched	25 Tests/Box
8.04.69.0.0020	Rotavirus Antigen Test Cassette, Stool Sample, Individually Pouched	20 Tests/Box
8.04.70.0.0025	Rotavirus Antigen Test Strip, Stool Sample, Individually Pouched	25 Tests/Box
8.04.71.0.0020	Adenovirus Antigen Test Cassette, Stool Sample, Individually Pouched	20 Tests/Box
8.04.72.0.0025	Adenovirus Antigen Test Strip, Stool Sample, Individually Pouched	25 Tests/Box
8.04.73.0.0020	Rota-Adeno Antigens Combo test Cassette, Stool Sample, Individually Pouched	20 Tests/Box
8.04.74.0.0025	Rota-Adeno Antigens Combo test Strip, Stool Sample, Individually Pouched	25 Tests/Box
8.16.01.0.0020	Crypto Virus Test Cassette, Stool Sample, Individually Pouched	20 Tests/Box
8.16.02.0.0025	Crypto Virus Test Strip, Stool Sample, Individually Pouched	25 Tests/Box
8.16.31.0.0020	Giardia Test Cassette, Stool Sample, Individually Pouched	20 Tests/Box
8.16.30.0.0025	Giardia Test Strip, Stool Sample, Individually Pouched	25 Tests/Box
8.16.33.0.0020	Crypto-Giardia Test Cassette, Stool Sample, Individually Pouched	20 Tests/Box
8.16.32.0.0025	Crypto-Giardia Test Strip, Stool Sample, Individually Pouched	25 Tests/Box
8.16.41.0.0020	E.coli Test Cassette, Stool Sample, Individually Pouched	20 Tests/Box
8.16.40.0.0025	E.coli Test Strip, Stool Sample, Individually Pouched	25 Tests/Box
8.16.82.0.0025	Salmonella typhi Antigen Test Cassette, Stool Sample, Individually Pouched	25 Tests/Box
8.16.85.0.0025	Salmonella paratyphi Antigen Test Cassette, Stool Sample, Individually Pouched	25 Tests/Box
8.16.80.0.0020	Clostridium difficile Antigen Test Cassette, Stool Sample, Individually Pouched	20 Tests/Box
8.16.81.0.0025	Clostridium difficile Antigen Test Strip, Stool Sample, Individually Pouched	25 Tests/Box
8.16.86.0.0025	C.Difficile Toxin A+B, Test Cassette, Stool Sample, Individually Pouched	25 Tests/Box
8.16.91.0.0025	Norovirus Genogroups I & II Ag, Test Cassette, Stool Sample, Individually Pouched	25 Tests/Box



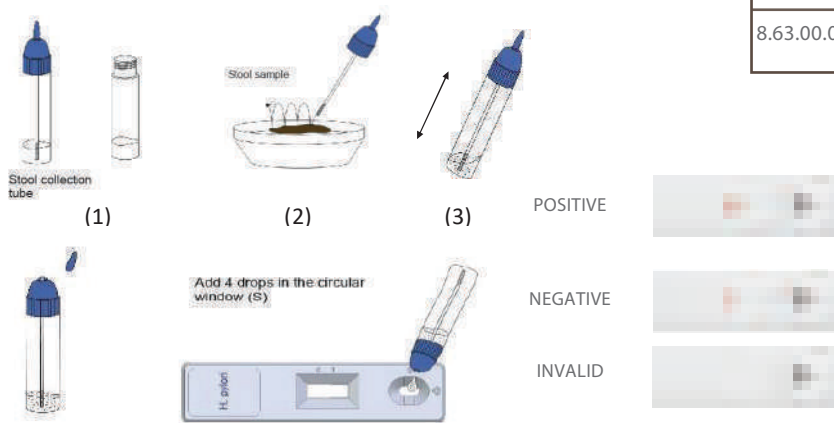
SWAB & NASAL SAMPLE		
Item Code	Item Description	Sizes
8.04.25.0.0020	Strep A Test Cassette, Swab Sample	20 Tests/Box
8.45.00.0.0020	Strep B Test Cassette, Swab Sample	20 Tests/Box
8.45.01.0.0020	Strep A+B Test Cassette, Swab Sample	20 Tests/Box
8.04.86.0.0020	Influenza A+B Test Cassette, Nasal Sample	20 Tests/Box
8.04.96.0.0025	Influenza A+B Test Strip, Nasal Sample	25 Tests/Box
8.16.20.0.0020	RSV Test Cassette, Swab Sample	20 Tests/Box
8.16.22.0.0025	RSV Test Strip, Swab Sample	25 Tests/Box
8.16.37.0.0020	Adeno Respiratory Antigen Test Cassette, Swab Sample	20 Tests/Box
8.16.36.0.0025	Adeno Respiratory Antigen Test Strip, Swab Sample	25 Tests/Box
8.16.39.0.0020	Adeno - RSV Respiratory Test Cassette, Swab Sample	20 Tests/Box
8.16.38.0.0025	Adeno - RSV Respiratory Test Strip, Swab Sample	25 Tests/Box



BLOOD SAMPLE		
Item Code	Item Description	Sizes
8.04.37.0.0020	Malaria Pf. Test Cassette, Whole Blood, Individually Pouched	20 Tests/Box
8.16.14.0.0020	Malaria Pf/Pv. Test Cassette, Whole Blood, Individually Pouched	20 Tests/Box



Item Code	Item Description	Sizes
8.16.24.0.0001 8.16.24.0.0020	HBsAg Test Cassette (Whole Blood/Serum/Plasma), Individually Pouched	Bulk 20 Tests/Box
8.04.33.0.0001 8.04.33.0.0020	HBsAg Test Cassette, Serum/Plasma, Individually Pouched	Bulk 20 Tests/Box
8.04.34.0.0001 8.04.34.0.0100	HBsAg Test Strip, Serum/Plasma, Individually Pouched	Bulk 100 Tests/Box
8.04.26.0.0020	Chlamydia Test Cassette, Urine or Swab	20 Tests/Box
8.63.00.0.0025	Chlamydia + Gonorrhea Rapid Test Cassette (Cervical/Urethral swab)	25 Tests/Box



URINE REAGENT STRIPS

Overview

Urine Reagent Strips (URS) are widely used in Urinalysis to determine pathological changes in urine. The strips contain dry-chemistry pads that, when dipped in urine, change their colors. The color change allows for the semi-quantitative measurement of various urine parameters. The strips are suitable for lab, point-of-care and even home use.



Features

- Atlas Medical Urine Reagent Strips can be used to detect up to 14 urine parameters.
- They are simple to use and the results are visually read within a minute.
- The strips are packed in desiccated bottles of 50 or 100 strips.
- Atlas Medical can also provide suitable readers to read the strip colors and document the results.

URINE ANALYZER

Atlas Urine Analyzer is a manual analyzer that detects Photosensitive Diode using the method of Reflectance Photometry. Test Categories include Routine, STAT and QC. Atlas Urine Analyzer has an Automatic calibration for accurate results and easy operation. It can read strips with up to 14 parameters, including Microalbumin/Creatinine/Calcium. It has an option to print results for quick and simple record management.

- Accurate.
- Reliable.
- Convenient.
- Easy Data Management.



Item Code	Item Description	Sizes
8.001.U120	Urine Analyzer For Clinics, U120	1 Unit
8.002.U500	Urine Analyzer For Hospitals, U500	1 Unit



Item Code	Item Description	Sizes
8.03.00.0.0050 8.03.00.0.0100	URS 1 Parameter: Glucose	50 Strips 100 Strips
8.03.01.0.0050 8.03.01.0.0100	URS 1 Parameter: Protein	50 Strips 100 Strips
8.03.02.0.0050 8.03.02.0.0100	URS 1 Parameter: Ketone	50 Strips 100 Strips
8.03.45.0.0050	URS 1 Parameter Blood, (5mm)	50 Strips
8.03.03.0.0050 8.03.03.0.0100	URS 2 Parameters: Glucose, Ketone	50 Strips 100 Strips
8.03.04.0.0050 8.03.04.0.0100	URS 2 Parameters: Glucose, Protein	50 Strips 100 Strips
8.03.05.0.0100	URS 2 Parameters: Sample end: Urobilinogen, Bilirubin	100 Strips
8.03.19.0.0050 8.03.19.0.0100	URS 2 Parameters(5mm): Sample End: Creatinine, pH	50 Strips 100 Strips
8.03.06.0.0050 8.03.06.0.0100	URS 3 Parameters: Protein, pH, Glucose	50 Strips 100 Strips
8.03.07.0.0100	URS 3 Parameters: Glucose, Protein, Ketone	100 Strips
8.03.08.0.0100	URS 3 Parameters: Sample end:pH, Ketone, Glucose	100 Strips
8.03.09.0.0100	URS 3 Parameters: Sample end:Leukocytes, Nitrite, Blood	100 Strips
8.03.10.0.0050 8.03.10.0.0100	URS 3 Parameters: Sample end:Protein, Specific Gravity, Creatinine	50 Strips 100 Strips
8.03.11.0.0100	URS 4 Parameters: Protein, pH, Specific Gravity, Glucose	100 Strips
8.03.12.0.0100	URS 4 Parameters: Protein, pH, Blood, Glucose	100 Strips
8.03.13.0.0050 8.03.13.0.0100	URS 5 Parameters: Glucose, Protein, Ketone, pH, Blood	50 Strips 100 Strips
8.03.25.0.0100	URS 5 Parameters(5mm): Blood, Glucose, Protein, Nitrite, Leukocytes	100 Strips
8.03.14.0.0100	URS 6 Parameters: Leukocytes, Nitrite, Protein, pH, Blood, Glucose	100 Strips
8.03.44.0.0100	URS 7 Parameter: Glucose, Ketone, Protein, PH, Blood, Bilirubin, Urobilinogen	100 Strips
8.03.23.0.0100	URS 8 Parameters: Glucose, Protein, pH, Ketone, Urobilinogen, Bilirubin, Blood, Nitrite	100 Strips
8.03.15.0.0100	URS 9 Parameters: Nitrite, Urobilinogen, Protein, pH, Blood, Specific Gravity, Ketone, Bilirubin, Glucose	100 Strips
8.03.16.0.0100	URS 10 Parameters: Leukocytes, Nitrite, Urobilinogen, Protein, pH, Blood, Specific Gravity, Ketone, Bilirubin, Glucose	100 Strips
8.03.17.0.0050 8.03.17.0.0100	URS 10 Parameters: Sample end: Nitrite, Urobilinogen, Protein, pH, Blood, Specific Gravity, Ketone, Bilirubin, Glucose, Ascorbic Acid	50 Strips 100 Strips
8.03.18.0.0100	URS 11 Parameters: Leukocytes, Nitrite, Urobilinogen, Protein, pH, Blood, Specific Gravity, Ketone, Bilirubin, Glucose, Ascorbic Acid	100 Strips
8.03.47.0.0100	URS 14 Parameters (ASC, GLU, BIL, KET, SG, BLO, PH, PRO, URO, NIT, LEU, ALB, CRE, CA)	100 Strips

FERTILITY RAPID TESTS

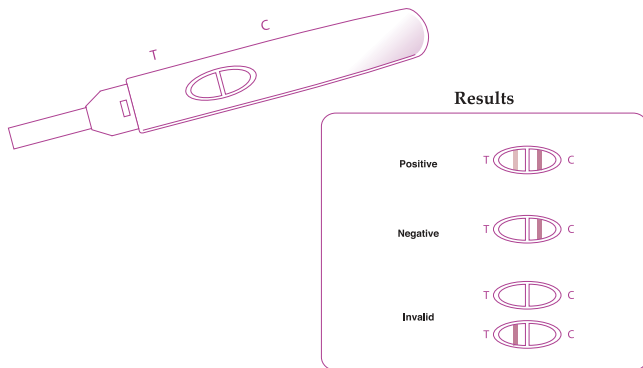
Overview

Atlas Medical Fertility Rapid Tests are based on lateral flow immunoassay for the detection of human chorionic gonadotropin (hCG), Ovulation (LH), and Human Follicular Stimulating Hormone (FSH) in urine. Each of the three tests comes in strip, cassette, or midstream formats and are conveniently packed in sizes to suit lab, point-of-care and home uses.



Features

- 🔄 Accurate.
- 🔄 Convenient.
- 🔄 Easy to use (add or dip in urine).
- 🔄 Competitively priced.
- 🔄 Results are obtained in 1 to 5 minutes.
- 🔄 Different strip sizes are available.



Item Code	Item Description	Sizes
8.04.00.0.0001 8.04.00.0.0020	hCG Test Cassette, Urine, Individually Pouched	Bulk 20 Tests/Box
8.04.01.0.0001 8.04.01.0.0020	hCG Test Cassette, Urine/Serum, Individually Pouched	Bulk 20 Tests/Box
8.04.04.0.0001 8.04.04.0.0100	hCG Test Strip, Urine, Individually Pouched	Bulk 100 Tests/Box
8.04.10.0.0001 8.04.10.0.0100	hCG Test Strip, Urine/Serum, Individually Pouched	Bulk 100 Tests/Box
8.04.13.0.0001 8.04.13.0.0015	hCG Midstream Test, Individually Pouched	Bulk 15 Tests/Box
8.04.14.0.0001 8.04.14.0.0020	LH Test Cassette, Urine, Individually pouched	Bulk 20 Tests/Box
8.04.15.0.0001 8.04.15.0.0100	LH Test Strip, Urine, Individually pouched	Bulk 100 Tests/Box
8.04.16.0.0001 8.04.16.0.0015	LH Midstream Test, Individually Pouched	Bulk 15 Tests/Box
8.04.17.0.0001 8.04.17.0.0020	FSH Test Cassette, Urine, Individually pouched	Bulk 20 Tests/Box
8.04.18.0.0001 8.04.18.0.0100	FSH Test Strip, Urine, Individually pouched	Bulk 100 Tests/Box
8.04.19.0.0001 8.04.19.0.0015	FSH Midstream Test, Individually Pouched	Bulk 15 Tests/Box

Item Code	Item Description	Sizes
8.59.00.0.0001	Vaginal PH strips with handle , Individually Pouched	Bulk

KIDNEY FUNCTION RAPID TESTS

Overview

Atlas Medical Microalbumin Rapid Test is a rapid visual immunoassay used for the qualitative detection of microalbumin in human urine samples. This kit is intended for use as an aid in the diagnosis of renal dysfunction.

Features

- 🔄 The test comes in cassette and Strip formats.



Item Code	Item Description	Sizes
8.16.52.0.0001 8.16.52.0.0020	Microalbumin Test Cassette ,Individually Pouched	Bulk 20 Tests/Box
8.16.53.0.0030 8.16.53.0.0100	Microalbumin Test Strip ,Individually Pouched	30 Tests/Box 100 Tests/Box

INFLAMMATION AND CANCER MARKERS



Overview

All the tests in this group are qualitative and based on lateral flow immunoassay for the detection of various inflammation and cancer markers.

Item Code	Item Description	Sizes
8.04.38.0.0020	Fecal Occult Blood Test (FOB) Test Cassette, Stool Sample, Individually Pouched	20 Tests/Box
8.04.85.0.0050	Fecal Occult Blood Test (FOB) Test Strip Stool Sample, Individually Pouched	50 Tests/Box
8.04.109.0.0020	Procalcitonin Test Cassette (PCT), (Serum/Plasma)	20 Tests/Box
8.48.00.0.0020	Procalcitonin Test Cassette (PCT), (Whole Blood / Serum/ Plasma)	20 Tests/Box
8.16.78.0.0025	Calprotectin Test Cassette	25 Tests/Box

Features

- Atlas Medical inflammation and cancer markers rapid tests are supplied in both cassette and strip formats.
- The kits are conveniently packed in different kit sizes of 20, 25, 30 and 100 tests per kit.



Item Code	Item Description	Sizes
8.16.28.0.0001 8.16.28.0.0020	PSA Test Cassette, Whole Blood/Serum/Plasma), Individually Pouched	Bulk 20 Tests/Box
8.04.39.0.0001 8.04.39.0.0020	PSA Test Cassette, Serum/Plasma, Individually Pouched	Bulk 20 Tests/Box
8.04.40.0.0001 8.04.40.0.0100	PSA Test Strip, Serum/Plasma, Individually Pouched	Bulk 100 Tests/Box

CARDIAC MARKERS RAPID TESTS

Overview

Atlas Medical offers lateral flow immunoassay rapid tests to detect the three major cardiac markers namely: Troponin I, Myoglobin and CK-MB, as an aid in the diagnosis of myocardial infarction (MI).



Item Code	Item Description	Sizes
8.04.45.0.0001 8.04.45.0.0020	Troponin I Test Cassette, Whole Blood/Serum/Plasma, Individually Pouched	Bulk 20 Tests/Box
8.04.46.0.0001 8.04.46.0.0020	Myoglobin Test Cassette, Whole Blood/Serum/Plasma, Individually Pouched	Bulk 20 Tests/Box
8.04.47.0.0001 8.04.47.0.0020	CK-MB Test Cassette, Whole Blood/Serum/Plasma, Individually Pouched	Bulk 20 Tests/Box
8.04.48.0.0001 8.04.48.0.0020	Cardiac Triple Test Cassette (Troponin I, CK-MB, Myoglobin), Whole Blood/Serum/Plasma, Individually Pouched	Bulk 20 Tests/Box

Features

- They can be used on whole blood (in addition to serum/plasma) making them ideal for emergency rooms.
- They come in single test or triple combo test cassette formats.
- The kits are conveniently packed in different kit sizes of 20, 25, 30 tests per kit.

DOA RAPID TESTS

Overview

All the tests in this group are qualitative and based on lateral flow immunoassay for the detection of various Drug of Abuse .



Features

- Atlas Medical DOA rapid tests are supplied in cassette , strip, panel and cup formats.
- The kits are conveniently packed in different kit sizes of 20, 25, 30, 50 and 100 tests per kit.



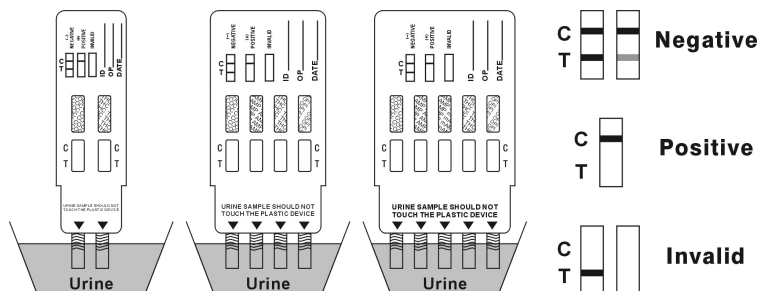
STRIP AND CASSETTE FORMAT		
Item Code	Item Description	Sizes
8.04.49.0.0001 8.04.49.0.0020	Morphine Test Cassette, Urine, Individually Pouched	Bulk 20 Tests/Box
8.04.50.0.0001 8.04.50.0.0100	Morphine Test Strip, Urine, Individually Pouched	Bulk 100 Tests/Box
8.04.51.0.0001 8.04.51.0.0020	Marijuana (THC) Test Cassette, Urine, Individually Pouched	Bulk 20 Tests/Box
8.04.52.0.0001 8.04.52.0.0100	Marijuana (THC) Test Strip, Urine, Individually Pouched	Bulk 100 Tests/Box
8.04.53.0.0001 8.04.53.0.0020	Amphetamine Test Cassette, Urine, Individually Pouched	Bulk 20 Tests/Box
8.04.54.0.0001 8.04.54.0.0100	Amphetamine Test Strip, Urine, Individually Pouched	Bulk 100 Tests/Box
8.04.55.0.0001 8.04.55.0.0020	Barbiturates Test Cassette, Urine, Individually Pouched	Bulk 20 Tests/Box
8.04.56.0.0001 8.04.56.0.0100	Barbiturates Test Strip, Urine, Individually Pouched	Bulk 100 Tests/Box
8.04.57.0.0001 8.04.57.0.0020	Benzodiazepines Test Cassette, Urine, Individually Pouched	Bulk 20 Tests/Box
8.04.58.0.0001 8.04.58.0.0100	Benzodiazepines Test Strip, Urine, Individually Pouched	Bulk 100 Tests/Box
8.04.59.0.0001 8.04.59.0.0020	Cocaine Test Cassette, Urine, Individually Pouched	Bulk 20 Tests/Box
8.04.60.0.0001 8.04.60.0.0100	Cocaine Test Strip, Urine, Individually Pouched	Bulk 100 Tests/Box
8.04.61.0.0001 8.04.61.0.0020	Methamphetamine Test Cassette, Urine, Individually Pouched	Bulk 20 Tests/Box
8.04.62.0.0001 8.04.62.0.0100	Methamphetamine Test Strip, Urine, Individually Pouched	Bulk 100 Tests/Box
8.04.63.0.0001 8.04.63.0.0020	Methadone Test Cassette, Urine, Individually Pouched	Bulk 20 Tests/Box
8.04.64.0.0001 8.04.64.0.0100	Methadone Test Strip, Urine, Individually Pouched	Bulk 100 Tests/Box
8.04.65.0.0001 8.04.65.0.0020	Phencyclidine Test Cassette, Urine, Individually Pouched	Bulk 20 Tests/Box
8.04.66.0.0001 8.04.66.0.0100	Phencyclidine Test Strip, Urine, Individually Pouched	Bulk 100 Tests/Box

Item Code	Item Description	Sizes
8.04.67.0.0001 8.04.67.0.0020	Tricyclic Anti-Depressants Test Cassette, Urine, Individually Pouched	Bulk 20 Tests/Box
8.04.68.0.0001 8.04.68.0.0100	Tricyclic Anti-Depressants Test Strip, Urine, Individually Pouched	Bulk 100 Tests/Box
8.04.99.0.0001 8.04.99.0.0020	Buprenorphine Test Cassette, Urine, Individually Pouched	Bulk 20 Tests/Box
8.16.23.0.0001 8.16.23.0.0100	Buprenorphine Test Strip, Urine, Individually Pouched	Bulk 100 Tests/Box
8.16.68.0.0001 8.16.68.0.0020	Tramadol Test Cassette, Urine, Individually Pouched	Bulk 20 Tests/Box
8.16.44.0.0001 8.16.44.0.0100	Tramadol Test Strip, Urine, Individually Pouched	Bulk 100 Tests/Box
8.16.15.0.0001 8.16.15.0.0020	Methylenedioxyamphetamine (MDMA) Ecstasy Test Cassette,Urine,Individually Pouched	Bulk 20 Tests/Box
8.16.05.0.0001 8.16.05.0.0100	Methylenedioxyamphetamine (MDMA) Ecstasy Test Strip, Urine,Individually Pouched	Bulk 100 Tests/Box
8.16.06.0.0001 8.16.06.0.0020	Opiates Test Cassette, Urine, Individually Pouched	Bulk 20 Tests/Box
8.16.07.0.0001 8.16.07.0.0100	Opiates Test Strip, Urine, Individually Pouched	Bulk 100 Tests/Box
8.16.58.0.0001 8.16.58.0.0020	Cotinine Test Cassette, Urine, Individually Pouched	Bulk 20 Tests/Box
8.16.59.0.0001 8.16.59.0.0100	Cotinine Test Strip, Urine, Individually Pouched	Bulk 100 Tests/Box
8.16.62.0.0001 8.16.62.0.0020	Oxycodone Test Cassette, Urine, Individually Pouched	Bulk 20 Tests/Box
8.16.63.0.0001 8.16.63.0.0100	Oxycodone Test Strip, Urine, Individually Pouched	Bulk 100 Tests/Box
8.16.64.0.0001 8.16.64.0.0020	Ketamine Test Cassette, Urine, Individually Pouched	Bulk 20 Tests/Box
8.16.65.0.0001 8.16.65.0.0100	Ketamine Test Strip, Urine, Individually Pouched	Bulk 100 Tests/Box
8.16.66.0.0001 8.16.66.0.0020	Proxyphene Test Cassette, Urine, Individually Pouched	Bulk 20 Tests/Box
8.16.67.0.0001 8.16.67.0.0100	Proxyphene Test Strip, Urine, Individually Pouched	Bulk 100 Tests/Box
8.16.68.0.0001 8.16.68.0.0020	Tramadol Test Cassette, Urine, Individually Pouched	Bulk 20 Tests/Box
8.16.69.0.0001 8.16.69.0.0020	EDDP Test Cassette, Urine, Individually Pouched	Bulk 20 Tests/Box
8.16.70.0.0001 8.16.70.0.0100	EDDP Test Strip, Urine, Individually Pouched	Bulk 100 Tests/Box
8.16.60.0.0001 8.16.60.0.0020	Dolantin Test Cassette, Urine, Individually Pouched	Bulk 20 Tests/Box
8.16.61.0.0001 8.16.61.0.0100	Dolantin Test Strip, Urine, Individually Pouched	Bulk 100 Tests/Box

DOA RAPID TESTS



Item Code	Item Description	Sizes
8.04.93.0.0001 8.04.93.0.0025	DOA Panel: 2 Drugs (Combination of any 2 drugs) Urine, Individually Pouched	Bulk 25 Tests/Box
8.04.94.0.0001 8.04.94.0.0025	DOA Panel: 3 Drugs (Combination of any 3 drugs) Urine, Individually Pouched	Bulk 25 Tests/Box
8.04.95.0.0001 8.04.95.0.0025	DOA Panel: 4 Drugs (Combination of any 4 drugs) Urine, Individually Pouched	Bulk 25 Tests/Box
8.04.79.0.0001 8.04.79.0.0025	DOA Panel: 5 Drugs (Combination of any 5 drugs) Urine, Individually Pouched	Bulk 25 Tests/Box
8.04.80.0.0001 8.04.80.0.0025	DOA Panel: 6 Drugs (Combination of any 6 drugs) Urine, Individually Pouched	Bulk 25 Tests/Box
8.04.81.0.0001 8.04.81.0.0025	DOA Panel: 7 Drugs (Combination of any 7 drugs) Urine, Individually Pouched	Bulk 25 Tests/Box
8.04.82.0.0001 8.04.82.0.0025	DOA Panel: 8 Drugs (Combination of any 8 drugs) Urine, Individually Pouched	Bulk 25 Tests/Box
8.04.83.0.0001	DOA Panel: 9 Drugs (Combination of any 9 drugs) Urine, Individually Pouched	Bulk
8.04.84.0.0001 8.04.84.0.0025	DOA Panel: 10 Drugs (Combination of any 10 drugs), Urine, Individually Pouched	Bulk 25 Tests/Box
8.16.03.0.0001 8.16.03.0.0025	DOA Panel: 11 Drugs (Combination of any 11 drugs), Urine, Individually Pouched	Bulk 25 Tests/Box
8.16.04.0.0001 8.16.04.0.0025	DOA Panel: 12 Drugs (Combination of any 12 drugs), Urine, Individually Pouched	Bulk 25 Tests/Box



Item Code	Item Description	Sizes
8.42.43.0.0001	Drug Of Abuse Cup, 7 parameters (Combination of any 7 drugs), Urine, Individually Pouched	Bulk
8.42.50.0.0001	Drug Of Abuse Cup, 8 parameters (Combination of any 8 drugs), Urine, Individually Pouched	Bulk
8.16.71.0.0001	Drug Of Abuse Cup, 10 parameters (Combination of any 10 drugs), Urine, Individually Pouched	Bulk



Item Code	Item Description	Sizes
8.16.87.0.0001	DOA Multiscreen Cassette: 3 Drugs (Combination of any 3 drugs), Urine, Individually Pouched	Bulk
8.16.88.0.0001	DOA Multiscreen Panel 7 Drugs (Combination of any 7 drugs), Urine, Individually Pouched	Bulk
8.16.89.0.0001	DOA Multiscreen Cassette: 8 Drugs (Combination of any 8 drugs), Urine, Individually Pouched	Bulk

CLINICAL CHEMISTRY KITS

Overview

Kits in this group measure concentrations of electrolytes , hormones, proteins, and other metabolic products in human blood , serum,plasma, CSF and urine .

Clinical Chemistry tests are indicated to assess systemic functions such liver function , kidney function , and endocrine and metabolic function .

Methods commonly used are colormetric and kinetic.



Features

- The kits are conveniently packed in different kit sizes of 20, 30, 60, 75, 100, 150, 200, 250, 500, and 1000 tests per kit.



Item Code	Item Description	Sizes
8.05.00.0.0250 8.05.00.0.0500	Albumin Bromocresol Green	2x125ml 4x125ml
8.05.01.0.0030 8.05.01.0.0060	Amylase	3x10ml 6x10ml
8.05.02.0.0020 8.05.02.0.0040	Acid Phosphatase Kinetic, Hilmann Method (Tablets)	10x2ml 20x2ml
8.05.03.0.0030 8.05.03.0.0060	Alkaline Phosphatase Kinetic, DGKC Method (Tablets)	10x3ml 20x3ml
8.05.04.0.0250 8.05.04.0.0500	Alkaline Phosphatase Kinetic, DGKC Method (Liquid)	5x50ml 5x100ml
8.05.05.0.0250 8.05.05.0.0500	Bilirubin Total (DMSO Method)	2x125ml 4x125ml
8.05.06.0.0250 8.05.06.0.0500	Bilirubin Direct (DMSO Method)	2x125ml 4x125ml
8.05.07.0.0250 8.05.07.0.0500	Bilirubin Total & Direct (DMSO Method)	2x125ml 4x125ml
8.05.08.0.0250 8.05.08.0.0500	Calcium Arsenazo III	2x125ml 4x125ml
8.05.09.0.0250 8.05.09.0.0500	Calcium O-Cresolphthalein	2x125ml 4x125ml
8.05.10.0.0250 8.05.10.0.0500	Chloride Thiocyanate Colorimetric	2x125ml 4x125ml
8.05.11.0.0250 8.05.11.0.0500	Cholesterol Liquid (CHOD-POD)	2x125ml 4x125ml
8.05.12.0.0025 8.05.12.0.0050	CK-MB Kinetic (Tablets)	10x2.5ml 20x2.5ml
8.05.13.0.0050 8.05.13.0.0100	CK-MB Kinetic (Liquid)	5x10ml 5x20ml
8.05.14.0.0025 8.05.14.0.0050	CK-NAC Kinetic (Tablets)	10x2.5ml 20x2.5ml
8.05.15.0.0050 8.05.15.0.0100	CK-NAC Kinetic (Liquid)	5x10ml 5x20ml



Item Code	Item Description	Sizes
8.05.16.0.0250 8.05.16.0.0500	Creatinine Jaffe Color-Kinetic	2x125ml 4x125ml
8.05.17.0.0250 8.05.17.0.0500	Glucose GOD-POD (Liquid)	2x125ml 4x125ml
8.05.18.0.0020 8.05.18.0.0040	GOT (AST) IFCC Kinetic (Tablets)	10x2ml 20x2ml
8.05.19.0.0250 8.05.19.0.0500	GOT (AST) IFCC Kinetic (Liquid)	5x50ml 5x100ml
8.05.20.0.0250 8.05.20.0.0500	GOT (AST) Reitman-Frankel Colorimetric	2x125ml 2x250ml
8.05.21.0.0020 8.05.21.0.0040	GPT (ALT) IFCC Kinetic (Tablets)	10x2ml 20x2ml
8.05.22.0.0250 8.05.22.0.0500	GPT (ALT) IFCC Kinetic (Liquid)	5x50ml 5x100ml
8.05.23.0.0200 8.05.23.0.0250	GPT (ALT) Reitman-Frankel Colorimetric	2x100ml 2x125ml
8.05.24.0.0020 8.05.24.0.0040	Gamma GT Kinetic, Carboxy Substrate (Tablets)	10x2ml 20x2ml
8.05.25.0.0250 8.05.25.0.0500	Gamma GT Kinetic, Carboxy Substrate (Liquid)	5x50ml 5x100ml
8.05.26.0.0100 8.05.26.0.0200	HDL Cholesterol Precipitating Reagent	2x50ml 2x100ml
8.05.27.0.0200	Iron Ferrozine Colorimetric	4x50ml
8.05.28.0.0030 8.05.28.0.0060	LDH IFCC Kinetic (Tablets)	10x3ml 20x3ml
8.05.29.0.0250 8.05.29.0.0500	LDH Pyruvate Kinetic UV DGKC (Liquid)	5x50ml 5x100ml
8.05.30.0.0060	Lipase Kinetic (Liquid)	6x10ml
8.05.31.0.0250 8.05.31.0.0500	Magnesium Calmagite Colorimetric	2x125ml 4x125ml
8.05.32.0.0250 8.05.32.0.0500	Phosphorus Phosphomolybdate UV	2x125ml 4x125ml
8.05.33.0.0050 8.05.33.0.0100	Potassium Colorimetric	50 Tests 100 Tests
8.05.34.0.0050 8.05.34.0.0100	Sodium Colorimetric	50 Tests 100 Tests
8.05.35.0.0100	TIBC (Total Iron Binding Capacity)	100 Tests
8.05.36.0.0250 8.05.36.0.0500	Total Lipids Phosphovanilline Colorimetric	2x125ml 4x125ml
8.05.37.0.0250 8.05.37.0.0500	Total Protein Biuret Colorimetric	2x125ml 4x125ml
8.05.38.0.0250 8.05.38.0.0500	Total Protein in CSF	2x125ml 4x125ml

CLINICAL CHEMISTRY KITS



Item Code	Item Description	Sizes
8.05.39.0.0250 8.05.39.0.0500	Triglycerides GPO-POD Colorimetric	2x125ml 4x125ml
8.05.40.0.0250 8.05.40.0.0500	Urea Urease-GLDH Kinetic (UV)	5x50ml 5x100ml
8.05.41.0.0250 8.05.41.0.0500	Urea Berthelot Colorimetric	2x125ml 4x125ml
8.05.42.0.0250 8.05.42.0.0500	Uric Acid Uricase-PAP Colorimetric (Two Reagents)	2x125ml 4x125ml
8.05.45.0.0250 8.05.45.0.0500	G6PD Deficiency Qualitative Kit	250 Tests 500 Tests
8.05.45.1.0250 8.05.45.1.0500	G6PD Deficiency Qualitative Kit, (with Filter Cards)	250 Tests 500 Tests
8.05.46.0.0075 8.05.46.0.0150	G6PD Deficiency Quantitative Kit	75 Tests 150 Tests
8.05.46.1.0075 8.05.46.1.0150	G6PD Deficiency Quantitative Kit, (with Filter Cards)	75 Tests 150 Tests



Item Code	Item Description	Sizes
8.05.71.0.0250 8.05.71.0.0500	Uric Acid Enzymatic Colorimetric (Mono Reagents)	2x125ml 4x125ml
8.05.43.1.0005	Pathological Control for Clinical Chemistry, Lyophilized, Human Source	5ml/vial
8.05.44.1.0005	Normal Control for Clinical Chemistry, Lyophilized, Human Source	5ml/vial
8.05.47.0.0003	G6PD Control, Normal Level, (Lyophilized)	6x0.5ml
8.05.51.0.0100	HDL Cholesterol, Enzymatic Colorimetric Direct Method	100 Tests
8.05.52.0.0100	LDL Cholesterol, Enzymatic Colorimetric Direct Method	100 Tests
8.40.00.1.0100	HbA1c Direct Enzymatic Colorimetric Kit	100 Tests
8.05.73.0.0020 8.05.73.0.0050	Electrolytes Kit (Sodium, Potassium, Chloride)	20 Tests for each 50 Tests for each

ALCOHOL TESTS

Overview

Atlas Medical supplies kits to test for alcohol in urine, saliva and breath. The urine alcohol test is based on the detection of EtG (Ethyl Glucuronide) in urine using a rapid lateral flow immunoassay. Whereas the saliva alcohol test uses a strip with dry chemistry pad that changes color to indicate the level of alcohol in the saliva. The alcohol breath test is a tube with crystals that change color as the subject blows through when alcohol level in breath exceeds a certain limit.



Item Code	Item Description	Sizes
8.25.01.0.0001 8.25.01.0.0025	Saliva Alcohol Test Strip, Individually Pouched	Bulk 25 Tests/Box
8.25.02.0.0001 8.25.02.0.0020	Breath Alcohol Test (0.02%), Individually Pouched	Bulk 20 Tests/Box
8.25.03.0.0001 8.25.03.0.0025	Breath Alcohol Test (0.05%), Individually Pouched	Bulk 25 Tests/Box
8.25.04.0.0001 8.25.04.0.0025	Breath Alcohol Test (0.08%), Individually Pouched	Bulk 25 Tests/Box
8.25.05.0.0001 8.25.05.0.0020	Ethyl Glucuronide (ETG) Urine Strip, Individually pouched	Bulk 20 Tests/Box

Features

- The kits are conveniently packed in different kit sizes of 20, 25, 50 and 100 tests per kit.



STAINS FOR HISTOLOGY & MICROBIOLOGY



Overview

Atlas Medical is well known for its range of lab stains for histology and microbiology applications. Atlas Medical stains are made of the highest quality ingredients to ensure good quality and vivid staining.

Features

- The stains come in convenient sizes, but custom sizes are also available.



STAIN PACKS FOR HISTOLOGY

Item Code	Item Description	Sizes
8.17.003.0300	Periodic Acid Schiff (PAS) Stain Kit	3x100ml
8.17.004.0300	Iron Stain Kit - Perl	3x100ml
8.17.009.1000	Gram Stain Pack	4x250ml
8.17.010.0750	Cold ZN - Kinyoun Stain Pack	3x250ml
8.17.011.0750	ZN Pack Standard	3x250ml
8.17.015.0500	Diff-3 Stain Pack	4x125ml
8.17.016.1000	Papanicolaou Stain Pack (EA35, EA50, EA65, OG6)	4X250ml

STAINS FOR HISTOLOGY

Item Code	Item Description	Sizes
8.15.017.0250	Carbol Fuchsin (Gram)	250ml/Bottle
8.15.019.0250	Carbol Fuchsin (Ziehl-Neelsen)	250ml/Bottle
8.15.032.0250	Crystal Violet (for Gram Stain)	250ml/Bottle
8.15.037.0250	Eosin Y (1% Aqueous)	250ml/Bottle
8.15.038.0250	Eosin Y (5% Aqueous)	250ml/Bottle
8.15.039.0250	Eosin Stain (diff 3)	250ml/Bottle
8.15.041.0250	Field Stain (Solution A)	250ml/Bottle
8.15.042.0250	Field Stain (Solution B)	250ml/Bottle
8.15.043.0750	Field Stain (Fixing Reagent, Eosin Reagent, Methylene Blue Reagent	3x250ml
8.15.044.0500	Field Stain (Solution A+B)	2x250ml
8.15.047.0250	Giemsa Stain (Modified-Glycerol/Methanol)	250ml/Bottle
8.15.049.0250	Gram's Iodine	250ml/Bottle
8.15.051.0250	Gram's Decolouriser	250ml/Bottle
8.15.059.0250	Haematoxylin Harris (no Acetic Acid)	250ml/Bottle
8.15.069.0250	Leishman Stain	250ml/Bottle
8.15.074.0250	Lugol's Iodine	250ml/Bottle
8.15.076.0250	Malachite Green (Aqueous)	250ml/Bottle
8.15.078.0250	May Grunwald Stain (Modified)	250ml/Bottle
8.15.105.0250	New Methylene Blue for Reticulocytes	250ml/Bottle
8.15.110.0250	Papanicolaou Stain EA35	250ml/Bottle
8.15.111.0250	Papanicolaou Stain EA36	250ml/Bottle
8.15.112.0250	Papanicolaou Stain EA65	250ml/Bottle
8.15.114.0250	Papanicolaou Stain EA50	250ml/Bottle
8.15.115.0250	Papanicolaou Stain OG6	250ml/Bottle
8.15.126.0250	Safranin (1% Aqueous)	250ml/Bottle
8.15.143.0250	Wright's Stain (Modified)	250ml/Bottle
8.15.144.0250	ZN Decolouriser	250ml/Bottle
8.15.146.0100	Immersion Oil	100ml/Bottle
8.15.150.1000	Mayers haematoxylin	1 L/Bottle
8.15.152.0500	Field Stain (Solution B)+Methanol	2X250 ml



MICROBIOLOGY

Item Code	Item Description	Sizes
8.38.00.0.0025	Blood Culture Bottles, Pediatric Size	25ml/Bottle
8.38.00.0.0050	Blood Culture Bottles, Adult Size	50ml/Bottle
8.36.00.0.0020	Mycoplasma Culture, Identification, Enumeration and Susceptibility Kit	20 Tests/Box



ANTIBIOTIC SENSITIVITY DISCS



Overview

Antibiotic sensitivity is a term used to describe the susceptibility of bacteria to antibiotics. Antibiotic susceptibility testing (AST) is usually carried out to determine which antibiotic will be most successful in treating a bacterial infection in vivo.

Small discs containing antibiotics are placed onto a plate upon which bacteria are growing. If the bacteria are sensitive to the antibiotic, a clear ring, or zone of inhibition, is seen around the disc indicating poor growth.

Features

- Atlas Medical offers a wide range of antibiotics discs at competitive prices.
- Easy to use.
- The kit comes with a Cartridge Applicator.
- Reliable quality.
- Comprehensive range of antibiotics at different concentrations.



Item Code	Item Description	Sizes
8.39.48.0.0250	NORFLOXACIN (10 µg) - NX	5x50 Discs
8.39.49.0.0250	OFLOXACIN (5 µg) - OF	5x50 Discs
8.39.50.0.0250	PEFLOXACIN (5 µg) - PF	5x50 Discs
8.39.51.0.0250	PENICILLIN -G (10 IU) - P	5x50 Discs
8.39.52.0.0250	PIPERACILLIN (100 µg) - PI	5x50 Discs
8.39.53.0.0250	PIPERACILLIN / TAZOBACTAM (100 µg + 10 µg) - PTZ	5x50 Discs
8.39.54.0.0250	RIFAMPIN (5 µg) - RIF	5x50 Discs
8.39.55.0.0250	ROXITHROMYCIN (30 µg) - RO	5x50 Discs

Item Code	Item Description	Sizes
8.39.01.0.0250	AMIKACIN (30 µg) - AK	5x50 Discs
8.39.02.0.0250	AMOXICILLIN (10 µg) - AX	5x50 Discs
8.39.03.0.0250	AMOXICILLIN / CLAVULANATE (20 µg + 10 µg) - AMC	5x50 Discs
8.39.04.0.0250	AMPICILLIN (10 µg) - AMP	5x50 Discs
8.39.05.0.0250	AMPICILLIN / SULBACTAM (10 µg - 10 µg) - AS	5x50 Discs
8.39.06.0.0250	AZITHROMYCIN (15 µg) - AZM	5x50 Discs
8.39.07.0.0250	AZTREONAM (30 µg) - AT	5x50 Discs
8.39.08.0.0250	CEFACLOR (30 µg) - CF	5x50 Discs
8.39.09.0.0250	CEFADROXIL (30 µg) - CD	5x50 Discs
8.39.10.0.0250	CEFAZOLIN (30 µg) - CZ	5x50 Discs
8.39.11.0.0250	CEFDINIR (5µg) - CDR	5x50 Discs
8.39.12.0.0250	CEFIXIME (5 µg) - CFM	5x50 Discs
8.39.13.0.0250	CEFOPERAZONE (75 µg) - CPZ	5x50 Discs
8.39.14.0.0250	CEFOPERAZONE / SULBACTAM (75 µg + 30 µg) - CS	5x50 Discs
8.39.15.0.0250	CEFOTAXIME (30 µg) - CTX	5x50 Discs
8.39.16.0.0250	CEFPIROME (30 µg) - CE	5x50 Discs
8.39.17.0.0250	CEFPODOXIME (10 µg) - CPD	5x50 Discs
8.39.18.0.0250	CEFPROZIL (30 µg) - CPR	5x50 Discs
8.39.19.0.0250	CEFTAZIDIME (30 µg) - CAZ	5x50 Discs
8.39.20.0.0250	CEFTIZOXIME (30 µg) - CZX	5x50 Discs
8.39.21.0.0250	CEFTRIOXONE (30 µg) - CTR	5x50 Discs
8.39.22.0.0250	CEFUROXIME (30 µg) - CXM	5x50 Discs
8.39.23.0.0250	CEPHALEXIN (30 µg) - CN	5x50 Discs
8.39.24.0.0250	CEPHALORIDINE (30 µg) - CH	5x50 Discs
8.39.25.0.0250	CEPHALOTHIN (30 µg) - CEP	5x50 Discs
8.39.26.0.0250	CHLORAMPHENICOL (30 µg) - C	5x50 Discs
8.39.27.0.0250	CIPROFLOXACIN (5 µg) - CIP	5x50 Discs
8.39.28.0.0250	CLARITHROMYCIN (15 µg) - CLR	5x50 Discs
8.39.29.0.0250	CLINDAMYCIN (2 µg) - CD	5x50 Discs
8.39.30.0.0250	CLOXACILLIN (5 µg) - COX	5x50 Discs
8.39.32.0.0250	DOXYCYCLINE (30 µg) - DOX	5x50 Discs
8.39.33.0.0250	ERYTHROMYCIN (15 µg) - E	5x50 Discs
8.39.34.0.0250	FURAZOLIDONE (100 µg) - FZ	5x50 Discs
8.39.35.0.0250	GATIFLOXACIN (5 µg) - GAT	5x50 Discs
8.39.36.0.0250	GENTAMYCIN (10 µg) - GEN	5x50 Discs
8.39.38.0.0250	KANAMYCIN (30 µg) - K	5x50 Discs
8.39.39.0.0250	LEVOFOLXACIN (5 µg) - LE	5x50 Discs
8.39.40.0.0250	LINCOMYCIN (15 µg) - LN	5x50 Discs
8.39.41.0.0250	LINEZOLID (30 µg) - LZ	5x50 Discs
8.39.42.0.0250	LOMEFLOXACIN (10 µg) - LOM	5x50 Discs
8.39.43.0.0250	MEROPENEM (10 µg) - MRP	5x50 Discs
8.39.44.0.0250	MINOCYCLINE (30 µg) - MI	5x50 Discs
8.39.45.0.0250	MOXIFLOXACIN (5 µg) - MXF	5x50 Discs
8.39.46.0.0250	NALIDIXIC ACID (30 µg) - NA	5x50 Discs
8.39.47.0.0250	NITROFURANTOIN (300 µg) - NIT	5x50 Discs

ANTIBIOTIC SENSITIVITY DISCS



Item Code	Item Description	Sizes
8.39.56.0.0250	SPARFLOXACIN (5 µg) – SPX	5x50 Discs
8.39.57.0.0250	STREPTOMYCIN (10 µg) – S	5x50 Discs
8.39.58.0.0250	SULFADIAZINE (300 µg) - SD	5x50 Discs
8.39.59.0.0250	TEICOPLANIN (30 µg) – TEI	5x50 Discs
8.39.60.0.0250	TETRACYCLINE (30 µg) – TE	5x50 Discs
8.39.61.0.0250	TICARCILLIN / CLAVULANATE (75 µg + 10 µg)-TCC	5x50 Discs
8.39.62.0.0250	TOBRAMYCIN (10 µg) – TOB	5x50 Discs
8.39.63.0.0250	TRIMETHOPRIM (5 µg) – TR	5x50 Discs
8.39.64.0.0250	VANCOMYCIN (30 µg) – VA	5x50 Discs
8.39.65.0.0250	POLYMYXIN-B (300 UNITS) -PB	5x50 Discs
8.39.66.0.0050	CEFOXITIN (30 µg) - CX	1x50 Discs
8.39.67.0.0250	CEFEPIME (30 µg) - CPM	5x50 Discs
8.39.69.0.0050	NOVOBIOCIN (5 µg) -NV	1x50 Discs



Item Code	Item Description	Sizes
8.39.70.0.0050	CARBENICILLIN (100 µg) - CB	1x50 Discs
8.39.71.0.0050	BACITRACIN - B (10 Unit)	1x50 Discs
8.39.72.0.0050	CEFOXITIN (30 µg) - CX	20x50 Discs
8.39.76.0.0250	COLISTIN -CL (10 µg)	5x50 Discs
8.39.77.0.0250	IMIPENEM-IPM (10 µg)	5x50 Discs
8.39.78.0.0250	OXACILLIN -OX (1 µg)	5x50 Discs



ELISA KITS

Features

- The kits feature high sensitivities, simple and robust methods, breakable well strips, quantitative results, ready-to use liquid reagents, and reasonable assay time.
- The assays can be used on most open ELISA manual readers and washers as well as open ELISA auto-analyzers.
- Kits are packed in sizes of 96 tests.



Overview

Atlas Medical offers a range of Enzyme Linked Immunosorbent Assay (ELISA or EIA) to detect major hormones in the fields of thyroids and fertility in serum.



HORMONE ELISA KITS		
Item Code	Item Description	Sizes
8.07.02.0.0096	PSA Elisa Kit	96 Tests
8.07.10.0.0096	Free PSA Elisa Kit	96 Tests



HORMONE ELISA KITS		
Item Code	Item Description	Sizes
8.10.01.0.0096	hCG Elisa Kit	96 Tests
8.10.03.0.0096	FSH Elisa Kit	96 Tests
8.10.04.0.0096	LH Elisa Kit	96 Tests
8.10.05.0.0096	Prolactin Elisa Kit	96 Tests
8.12.00.0.0096	T3 Elisa Kit	96 Tests
8.12.01.0.0096	T4 Elisa Kit	96 Tests
8.12.02.0.0096	TSH Elisa Kit	96 Tests
8.12.03.0.0096	Free T4 Elisa Kit	96 Tests
8.12.04.0.0096	Free T3 Elisa Kit	96 Tests
8.11.03.0.0096	Progesterone Elisa kit	96 Tests
8.11.04.0.0096	Testosterone Elisa Kit	96 Tests

ELISA KITS

Overview

Atlas Medical offers a range of Enzyme Linked Immunosorbent Assay (ELISA or EIA) to detect IgG and IgM antibodies against ToRCH (Toxoplasmosis, Rubella, CMV and Herpes I & II) in serum.

- * Different Packaging sizes.
- * Easy to Use
- * High Quality



Item Code	Item Description	Sizes
8.13.10.0.0096	Herpes Simplex 2 IgM (HSV2 IgM) Elisa Kit	96 Tests
8.13.11.0.0096	Herpes Simplex 1,2 IgG (HSV1,2 IgG) Elisa Kit	96 Tests
8.13.12.0.0096	Herpes Simplex 1,2 IgM (HSV1,2 IgM) Elisa Kit	96 Tests



TORCH ELISA KITS

Item Code	Item Description	Sizes
8.13.00.0.0096	Toxo Plasma Gondii IgG (Toxo IgG) Elisa kit	96 Tests
8.13.01.0.0096	Toxoplasma gondii IgM (Toxo IgM) Elisa kit	96 Tests
8.13.02.0.0096	Rubella IgG Elisa Kit	96 Tests
8.13.03.0.0096	Rubella IgM Elisa Kit	96 Tests
8.13.05.0.0096	Cytomegalovirus IgG (CMV IgG) Elisa Kit	96 Tests
8.13.06.0.0096	Cytomegalovirus IgM (CMV IgM) Elisa Kit	96 Tests
8.13.07.0.0096	Herpes Simplex 1 IgG (HSV1 IgG) Elisa Kit	96 Tests
8.13.08.0.0096	Herpes Simplex 1 IgM (HSV1 IgM) Elisa Kit	96 Tests
8.13.09.0.0096	Herpes Simplex 2 IgG (HSV2 IgG) Elisa Kit	96 Tests

Overview

Atlas Medical offers a range of Enzyme Linked Immunosorbent Assay (ELISA or EIA) to detect a series of infection diseases such as HIV, Hepatitis (A, B, C, D and E) and H. pylori (antigens in feces).



INFECTIOUS DISEASES ELISA KITS

Item Code	Item Description	Sizes
8.14.19.1.0096	Helicobacter Pylori Antigen Elisa Kit	96 Tests



INFECTIOUS DISEASES ELISA KITS

Item Code	Item Description	Sizes
8.14.28.0.0096	HBsAg Elisa Kit	96 Tests
8.14.29.0.0096	HBsAb Elisa Kit	96 Tests
8.14.30.0.0096	HBcAb Elisa Kit	96 Tests
8.14.31.0.0096	HBeAg Elisa Kit	96 Tests
8.14.32.0.0096	HBeAb Elisa Kit	96 Tests
8.14.35.0.0096	HEV IgM Elisa Kit	96 Tests
8.14.38.0.0096	HCV Ab Elisa Kit	96 Tests
8.14.39.0.0096	HAV IgM Elisa Kit	96 Tests
8.14.40.0.0096	HIV 1,2 Antibody Elisa Kit	96 Tests
8.14.43.0.0096	Syphilis Antibody total (IgG,IgA,IgM) Elisa Kit	96 Tests
8.14.44.0.0096	HIV Ag/Ab Elisa Kit	96 Tests



OTHER ELISA KITS

Item Code	Item Description	Sizes
8.07.03.0.0096	Alpha Feto Protein (AFP) Elisa Kit	96 Tests
8.07.08.0.0096	Ferritin Elisa Kit	96 Tests
8.08.00.0.0096	Troponin I Elisa Kit	96 Tests
8.09.00.0.0096	IgE Elisa Kit	96 Tests
8.51.00.0.0096	25-OH Vitamin D Elisa Kit	96 Tests
8.57.00.0.0096	Vitamin B12 Elisa Kit	96 Tests
8.58.00.0.0096	Folic Acid Elisa Kit	96 Tests
8.06.32.0.0096	Anti-CRA Elisa Kit	96 Tests

HOME TESTS



Overview

Atlas Medical provides a range of home tests that have been specifically CE marked for OTC use. The range includes fertility tests (Pregnancy, Ovulation and Menopause). The home tests range also includes other medical conditions such as liver function, kidney function, diabetes and urine tract infection. These tests are based on urine reagent strips.

Screening Kits

Item Code	Item Description	Sizes
70004001	Atlas Home Diabetes Test	2 Tests/Box
70021001	Atlas Home Urinary Tract Infection Test	2 Tests/Box
70022001	Atlas Home Kidney Function Test	2 Tests/Box
70023001	Atlas Home Liver Function Test	2 Tests/Box

Features

- These tests come in cassette, midstream and strip formats.
- The screening kits come with 2 individually pouched strips and easy to read instructions for use.
- All kits are packed in attractively designed boxes with various languages.
- Atlas Medical also supplies these kits under OEM arrangements.
- Screening bundle including (UTI, Kidney, Liver, Diabetes) is available, Family planning kit (Pregnancy and Ovulation) is also available.



- Simply dip the test strip in urine for one second.
- Wait for 30 - 60 seconds.
- Compare the colors on the strip to the color chart on the box.



Fertility Kits

Item Code	Item Description	Sizes
70171001	Atlas Home Pregnancy Test Cassette	1 Test/Box
70172001	Atlas Home Pregnancy Test Midstream	1 Tests/Box
70174001	Atlas Home Ovulation Test Cassette	5 Tests/Box
70175001	Atlas Home Ovulation Test Midstream	3 Tests/Box
70177001	Atlas Home Menopause Test Cassette	1 Test/Box
70178001	Atlas Home Menopause Test Midstream	1 Test/Box
70180001	Atlas Home Pregnancy Test Strip (With Handle)	1 Test/Box
70170001	Atlas Home Pregnancy Test Strip	1 Test/Box

BLOOD GLUCOSE MONITORING SYSTEMS

Overview

Testing your blood glucose regularly helps you better manage your diabetes. Reliance™ by Atlas Medical, uses the latest blood glucose sensor technologies to offer you the most accurate and reliable results for the peace of mind you need. Atlas Medical offers these systems in strips which includes Gold Electrodes.



Features

- ⌚ Reliance Gold™ by Atlas Medical, uses the latest blood glucose gold sensor technology to offer the most accurate and reliable results.
- ⌚ Test time required is 5 Seconds.
- ⌚ Required sample volume is 0.9µl
- ⌚ Test result range is between 10 - 600 mg/dl (0.6 -33.3 mmol/L)

Reliance Gold		
Item Code	Item Description	Sizes
8.52.00.0.0001	Reliance Gold Glucometer Pack	1 Pack
8.52.00.0.0025	Strips for Reliance Gold Glucometer	25 Strips/Bottle
8.52.00.0.0050		50 Strips/Bottle
8.52.00.1.0001	Reliance Gold Glucometer (Divec only)	1 Divec only



CONTACT US



FIND US ON:



@Atlas.Medical.GmbH



linkedin.com/company/atlas-medical-co



@AtlasMedic



Amazon.co.uk/Atlas Medical

Email: Info@atlas-medical.com

INTERNATIONAL PRESENCE

