

## DS-3E0106HP-E

### 4-Port 100 Mbps Long-Range Unmanaged PoE Switch

DS-3E0106HP-E switches are layer 2 100 Mbps long-range PoE switches, providing 1 × 10/100 Mbps Hi-PoE port, 3 × 10/100 Mbps PoE ports, and 2 × 10/100 Mbps RJ45 ports. The switches provide advanced Hi-PoE/PoE technology and support extend mode with long-range access up to 300 m. The prior and stable transmission of the important surveillance area videos can also be guaranteed when connected to the high priority ports. Meanwhile, the 2 × 10/100 Mbps RJ45 uplink ports guarantee applications of multiple network solutions.



Intelligent PoE



300 m Transmission



802.3bt Hi-PoE



8-Core Power Supply



6 KV Surge Protection



High Priority Ports

## Feature and Function

### Intelligent PoE Management.

- When the power supply exceeds the limit, PoE ports intelligently manage the power supply, which extends the switch lifetime.

### Up to 300 m Long Range PoE Transmission.

- The distance between IPCs and switch can reach maximum 300 meters.

### IEEE 802.3bt Standard Hi-PoE, Max. 60 W for One Port.

- IEEE 802.3bt standard Hi-PoE port provides max. 60 W power supply for high power devices such as domes or other 802.3bt devices.

### 4/8-Core Adaptive Power Supply with Less Power Loss.

- 8-core power supply reduces the power loss on cables.

### 6KV Surge Protection to Improve Reliability in Harsh Environment.

- The built-in surge protection device protects the switch from the sudden lightning surge in harsh environment.

### Design for Video Transmission.

- VIP port ensures important data transmission when network congestion occurs.

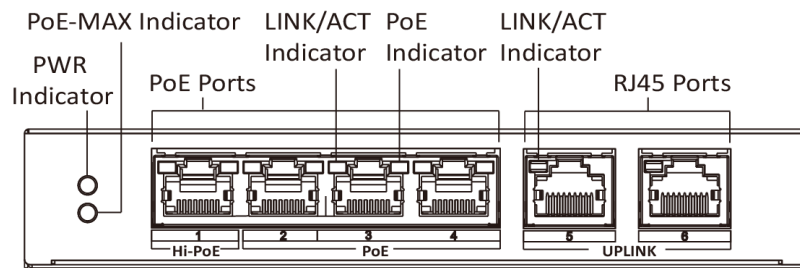


## Specification

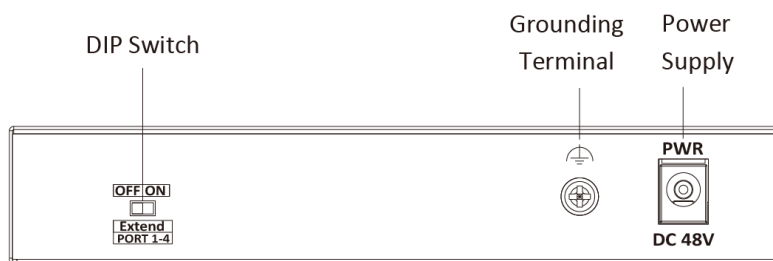
| Model                     |                                      | DS-3E0106HP-E   |
|---------------------------|--------------------------------------|---|
| Network parameters        | Port number                          | 1 × 10/100 Mbps Hi-PoE port, 3 × 10/100 Mbps PoE ports, and 2 × 10/100 Mbps RJ45 ports  |
|                           | Port type                            | RJ45 port, full duplex, MDI/MDI-X adaptive  |
|                           | Standard                             | IEEE 802.3, IEEE 802.3u, IEEE 802.3x  |
|                           | Forwarding mode                      | Store-and-forward switching   |
|                           | Working mode                         | Standard mode (default); Extend mode  |
|                           | High priority port                   | Ports 1 to 2  |
|                           | Ports for long-distance transmission | Ports 1 to 4  |
|                           | MAC address table                    | 2 K   |
|                           | Switching capacity                   | 1.2 Gbps  |
|                           | Packet forwarding rate               | 0.893 Mpps  |
|                           | Internal cache                       | 768 Kbits   |
|                           | PoE power supply                     | PoE standard  |
| PoE power pin             |                                      | Support 8-core power supply, Ethernet cable 1/2/3/6 and 4/5/7/8 provide power supply simultaneously.  |
| PoE port                  |                                      | Ports 1 to 4  |
| Max. port power           |                                      | Port 1: 60 W<br>Ports 2 to 4: 30 W  |
| PoE power budget          |                                      | 60 W  |
| Max. power consumption    |                                      | 65 W  |
| General                   | Shell                                | Metal material, fan-free design   |
|                           | Gross weight                         | 0.77 kg (1.70 lb)   |
|                           | Net weight                           | 0.24 kg (0.53 lb)   |
|                           | Dimension (L × H × D)                | 145 mm × 25.6 mm × 68.45 mm (5.7" × 1.0" × 2.7")  |
|                           | Operating temperature                | -10 °C to 55 °C (14 °F to 131 °F)   |
|                           | Storage temperature                  | -40 °C to 85 °C (-40 °F to 185 °F)  |
|                           | Operating humidity                   | 5% to 95% (no condensation)   |
|                           | Storage humidity                     | 5% to 95% (no condensation)   |
|                           | Power supply                         | 48 VDC, 1.35 A  |
| Power consumption in idle | 5 W                                  |   |
| Approval                  | EMC                                  | FCC (47 CFR Part 15, Subpart B); CE-EMC (EN 55032: 2015, EN 61000-3-2: 2014, EN 61000-3-3: 2013, EN 55024: 2010 +A1: 2015); RCM (AS/NZS CISPR 32: 2015); IC (ICES-003: Issue 6, 2016) |
|                           | Safety                               | UL (UL 60950-1); CB (IEC 60950-1:2005 + Am 1:2009 + Am 2:2013); CE-LVD (EN 60950-1:2005 + Am 1:2009 + Am 2:2013)  |
|                           | Chemistry                            | CE-RoHS (2011/65/EU); WEEE (2012/19/EU); Reach (Regulation (EC) No 1907/2006)   |

## Physical Interface

Front panel:



Back panel:



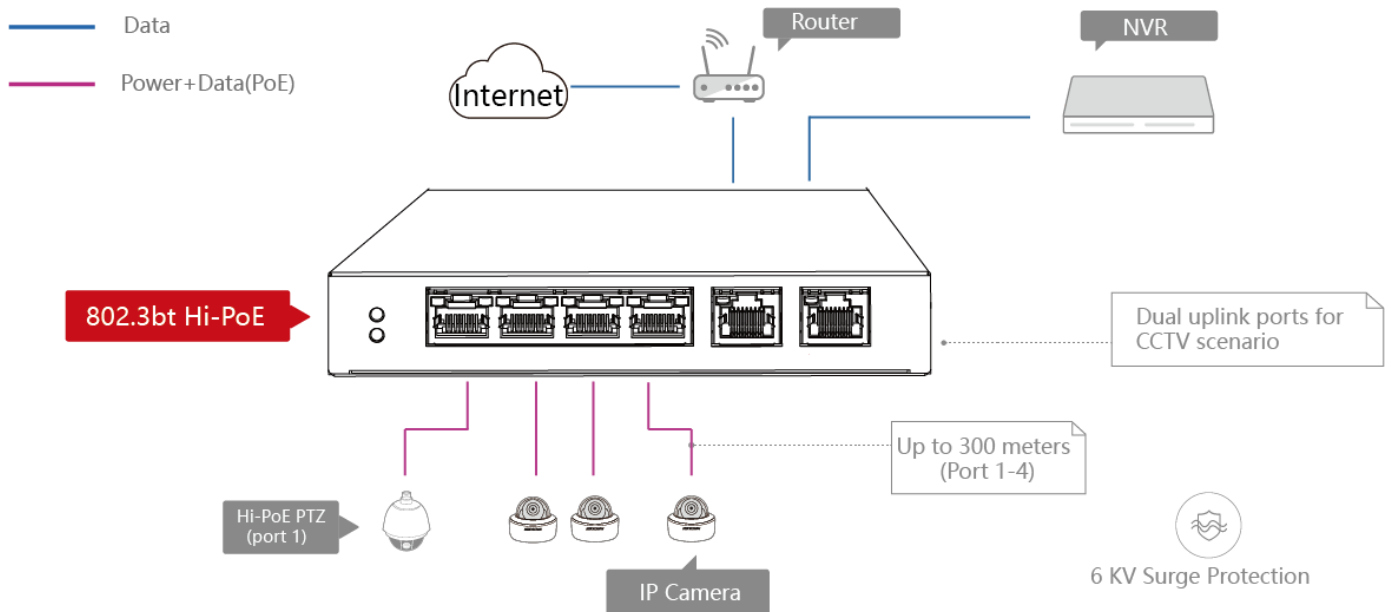
## Available Model

DS-3E0106HP-E

## Dimension (unit: mm)



## Typical Application



Distributed by



## HIKVISION®

### Headquarters

No.555 Qianmo Road, Binjiang District,  
Hangzhou 310051, China  
T +86-571-8807-5998  
overseasbusiness@hikvision.com

**Hikvision USA**  
T +1-909-895-0400  
sales.usa@hikvision.com

**Hikvision Australia**  
T +61-2-8599-4233  
salesau@hikvision.com

**Hikvision India**  
T +91-22-28469900  
sales@pramahikvision.com

**Hikvision Canada**  
T +1-866-200-6690  
sales.canada@hikvision.com

**Hikvision Thailand**  
T +662-275-9949  
sales.thailand@hikvision.com

**Hikvision Europe**  
T +31-23-5542770  
sales.eu@hikvision.com

**Hikvision Italy**  
T +39-0438-6902  
info.it@hikvision.com

**Hikvision Brazil**  
T +55 11 3318-0050  
Latam.support@hikvision.com

**Hikvision Turkey**  
T +90 (216)521 7070- 7074  
sales.tr@hikvision.com

**Hikvision Malaysia**  
T +601-7652-2413  
sales.my@hikvision.com

**Hikvision UK & Ireland**  
T +01628-902140  
sales.uk@hikvision.com

**Hikvision South Africa**  
Tel: +27 (10) 0351172  
sale.africa@hikvision.com

**Hikvision France**  
T +33(0)1-85-330-450  
info.fr@hikvision.com

**Hikvision Kazakhstan**  
T +7-727-9730667  
nikia.panfilov@hikvision.ru

**Hikvision Vietnam**  
T +84-974270888  
sales.vt@hikvision.com

**Hikvision UAE**  
T +971-4-4432090  
salesme@hikvision.com

**Hikvision Singapore**  
T +65-6684-4718  
sg@hikvision.com

**Hikvision Spain**  
T +34-91-737-16-55  
info.es@hikvision.com

**Hikvision Tashkent**  
T +99-87-1238-9438  
uzb@hikvision.ru

**Hikvision Hong Kong**  
T +852-2151-1761  
info.hk@hikvision.com

**Hikvision Russia**  
T +7-495-669-67-99  
saleru@hikvision.com

**Hikvision Korea**  
T +82-(0)31-731-8817  
sales.korea@hikvision.com

**Hikvision Poland**  
T +48-22-460-01-50  
info.pl@hikvision.com

**Hikvision Indonesia**  
T +62-21-2933759  
Sales.Indonesia@hikvision.com

**Hikvision Colombia**  
sales.colombia@hikvision.com