



permedica
ORTHOPAEDICS

JUMP[®] System
TRASER[®]
Acetabular
Cage



**PRODUCT
INFORMATION**

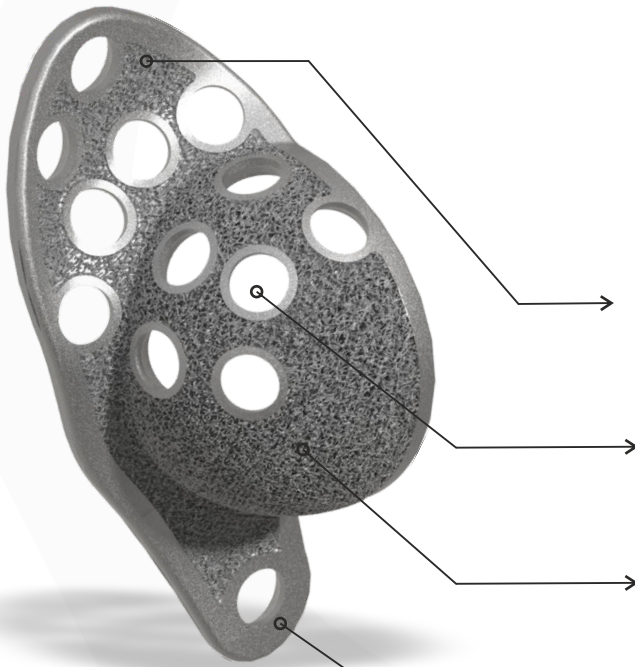
CE
0426

TRASER® Random Trabecular Laser Technology

The JUMP® System **TRASER®** Acetabular Cage is obtained through 3D printed Selective Laser Melting additive manufacturing process, which allows to obtain solid objects from 3D-CAD digital models by adding the raw material (Ti6Al4V powder) layer over layer.

The randomized size and geometrical shape of the trabecular porous surface in contact with the bone provides optimal structure for bone in-growth and biological type secondary fixation of the implant.

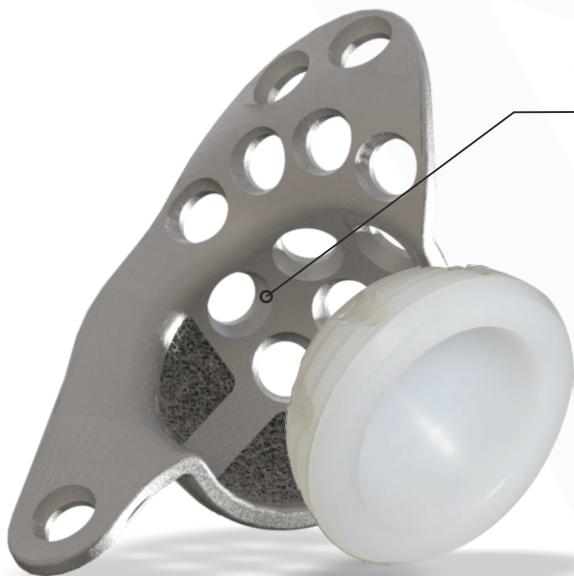
JUMP® System **TRASER®** Acetabular Cage



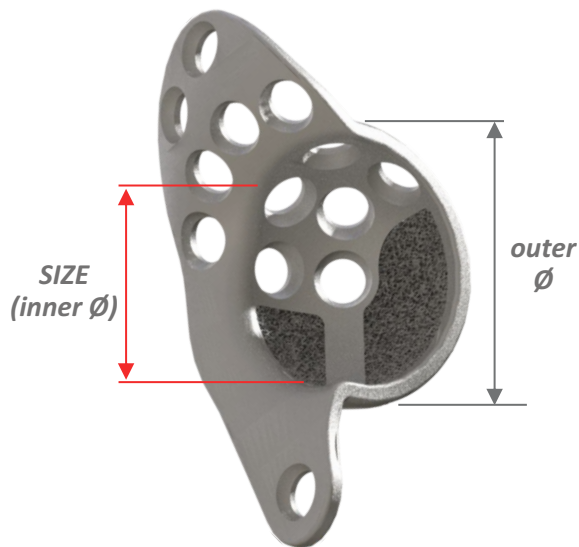
10 anatomical sizes

Titanium alloy Acetabular Cage to be used as a reinforcement of the acetabular bony structure in order to lodge a cemented acetabular component. Optimized anatomical design developed on the basis of morphological analysis of several pelvis from both genders.

- ✓ Cranial flange resting on the iliac spine, also utilizable for eventual bone grafts fixation.
- ✓ The holes in the cranial region and on the iliac flange allows for screw insertion up to 15° angle.
- ✓ Surface in contact with the bone with open cell 3D trabecular structure also present on the flanges without interruption.
- ✓ Ischial flange with hole for bone compression screw fixation.
- ✓ The size refers to the INTERNAL diameter of the Cage, useful to host the cemented acetabular component: the EXTERNAL diameter is 6 mm larger.
- ✓ By increasing of the size, the center of the cementing sphere moves laterally in order to limit the medial protrusion.



JUMP System TRASER® Acetabular Cage



SIZE		RIGHT	LEFT
inner Ø	outer Ø	reference	reference
44 mm	50 mm	39761	39762
46 mm	52 mm	39763	39764
48 mm	54 mm	39765	39766
50 mm	56 mm	39767	39768
52 mm	58 mm	39769	39770
54 mm	60 mm	39771	39772
56 mm	62mm	39773	39774
58 mm	64 mm	39775	39776
60 mm	66 mm	39777	39778
62 mm	68 mm	39779	39780

Fixation Screws



FLAT
Head

Length	reference
20mm	36720
25mm	36725
30mm	36730
35mm	36735
40mm	36740
45mm	36745
50mm	36750
60mm	36760

Cancellous bone screws Ø 6,5mm.

Information

INTENDED PURPOSE:

Acetabular reinforcement cage applicable to the bone using screws, to be used in hip reconstruction operations in combination with a cemented acetabular cup and a femoral stem equipped with a femoral head.

MATERIALS:

CAGE: Titanium Aluminium Vanadium alloy - ISO5832/3 - ASTM F 2924;
SCREWS: Titanium Aluminium Vanadium alloy - ISO5832/3.

SURFACE FINISHING:

randomized trabecular metal structure with average pores size of 650µm

STERILIZATION:

Method: irradiation (R - nominal dose 25 kGy) or Vaporized Hydrogen Peroxide (VH2O2).

Validity: 10 years.

CLASSIFICATION:

Class III as reported in Directive 2005/50/CE (and related D.lgs 26 april 2007 n.65) concerning re-classification of Hip, Knee and Shoulder joint prostheses which modifies classification criteria of Annex IX of Directive 93/42/CEE and next integrations and amendments.



permedica
ORTHOPAEDICS

*CHALLENGING EXCELLENCE
IN TECHNOLOGY*

www.permedica.it