



BIOPSY FORCEPS

DISPOSABLE FORCEPS



DISPOSABLE BIOPSY FORCEPS

RELIABILITY MEETS COMFORT AT THE HIGHEST LEVEL

The wide choice of disposable biopsy forceps ensures that you are perfectly equipped for every application. MICRO-TECH offers forceps with diameters of 1.8 mm, 2.3 mm and 3.0 mm in addition to lengths of 120, 180, 230 and 260 cm. Whether they come with or without a spike, coated or uncoated, with standard or toothed

spoons – all models are characterized by their high reliability. The excellent cutting edge of our biopsy forceps allows you to take diagnostically conclusive tissue samples in a safe and easy manner. In addition to the comfort-forceps with soft grip, our range also includes the more cost-efficient eco-forceps.

SPECIFIC CHARACTERISTICS

- Reliability
- Very comfortable to use
- Diagnostically conclusive biopsies
- Wide product variety
- High quality riveted scissors joints
- Working channel-friendly design



Toothed spoon



Scissors joint

SUCCESSFUL IN PRACTICAL USE

The biopsy forceps perform in practice thanks to their ease of insertion and excellent mobility. The area to be examined can therefore be reached easily and rapidly. During tissue sampling, the forceps are outstanding for their accurate control and precise cut.

Due to their particularly sharp cutting edge, the forceps allow precise removal of biopsates. The amount of effort in this case is minimal. The biopsates acquired biopsy samples are large and therefore provide sufficient tissue for diagnostically conclusive findings.



GRIP IN A COMFORT- OR ECO-VERSION

With the grip of the forceps, the jaw section is perfectly under control. It offers you precise guidance even with sharply angled endoscopes. The soft, anti-slip rubber coating handle makes work safe and pleasant. Two different handles are available:

The comfort-version with the soft antiskid rubber makes handling safe and convenient or the eco-version with the plastic handle.

JAW SECTIONS FOR EVERY INTERVENTION

Whether for biopsies or for removal of small polyps – the disposable biopsy forceps are perfectly equipped for any task with different jaw sections: with a smooth or a toothed cutting edge and with or without a spike. The jaw section can be precisely controlled and opened at a wide angle.



HIGH QUALITY COATING

A choice of an uncoated and coated metal coil is available. Additional markings are provided on the coating to facilitate orientation during use.



RAPID IDENTIFICATION

The forceps components have different colour codes for quick identification and choice of application field.

- Handle:
- white – toothed cutting edge
 - grey – smooth cutting edge

- Jaw section protective cap:
- red – with spike
 - yellow – without spike

- Coating:
- grey – bronchial forceps
Ø 1.8 mm, 120 cm long

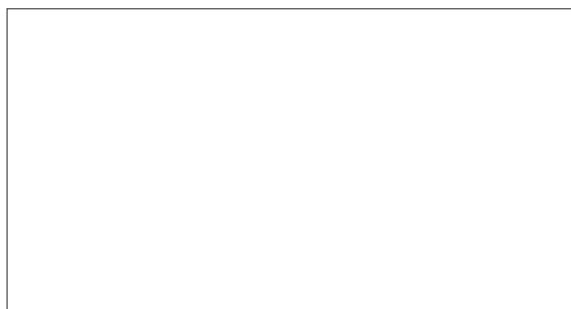
SPECIFICATIONS

REF	Ø mm	Length mm	Spike	Covering	Jaw
BRONCHIAL FORCEPS					
NBF01-11018120	1.8	1200	No	Without	Standard
NBF11-11018120	1.8	1200	No	Without	Serrated
NBF01-11118120	1.8	1200	Yes	Without	Standard
NBF02-11018120	1.8	1200	No	Grey	Standard
NBF12-11018120	1.8	1200	No	Grey	Serrated
NBF02-11118120	1.8	1200	Yes	Grey	Standard
NBF01-11023120	2.3	1200	No	Without	Standard
NBF01-11123120	2.3	1200	Yes	Without	Standard
NBF03-11023120	2.3	1200	No	Grey	Standard
NBF03-11123120	2.3	1200	Yes	Grey	Standard

Packaging unit: 10 pieces

Grid of dots for notes on page 6.

Grid of dots for notes on page 7.





COMBINATION CLEANING BRUSH SOLUTIONS

THE 2 IN 1 SOLUTION FOR THE DAILY PRACTICE

The cleaning of both the endoscope channels and its air-water valve requires a different kind of brush. MICRO-TECH offers smart devices for this purpose that makes the daily

practice easier and more efficient. The dual cleaning brush and valve brush combination set made by MICRO-TECH is such a solution for the reprocessing of the endoscope.

SPECIFIC CHARACTERISTICS

- Double cleaning brush for air-water valve/control head
- Intensive and efficient cleaning
- Protective beads on the brush heads
- Brushes made of resistant nylon
- Individually hygienically packed set available



Tapered



Protective bead

ONE BRUSH FITS ALL VALVES

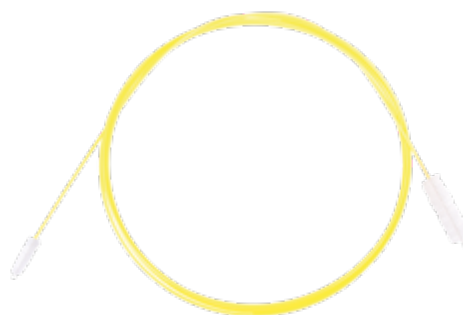
MICRO-TECH offers the all inclusive solution for the thorough brushing of the air-water valve vents and ports. The double header brush combines a 40 mm long and 11 mm thick port brush with a 20 mm long and 5 mm thin vent brush. Both brushes are flexible and have protective distal beads to help prevent damage to the endoscope.



Double headed cleaning brush for air-water valve

COMBINATION DUAL FUNCTION BRUSH

A cleaning brush with a conical brush head for the endoscope channels and a large calibre and long brush head for the airwater valve- ports allow channel and valve-port brushing with a single cleaning brush. This saves time and reduces costs.



Combination cleaning brush

SMART AND EFFICIENT: CLEANING BRUSH SET

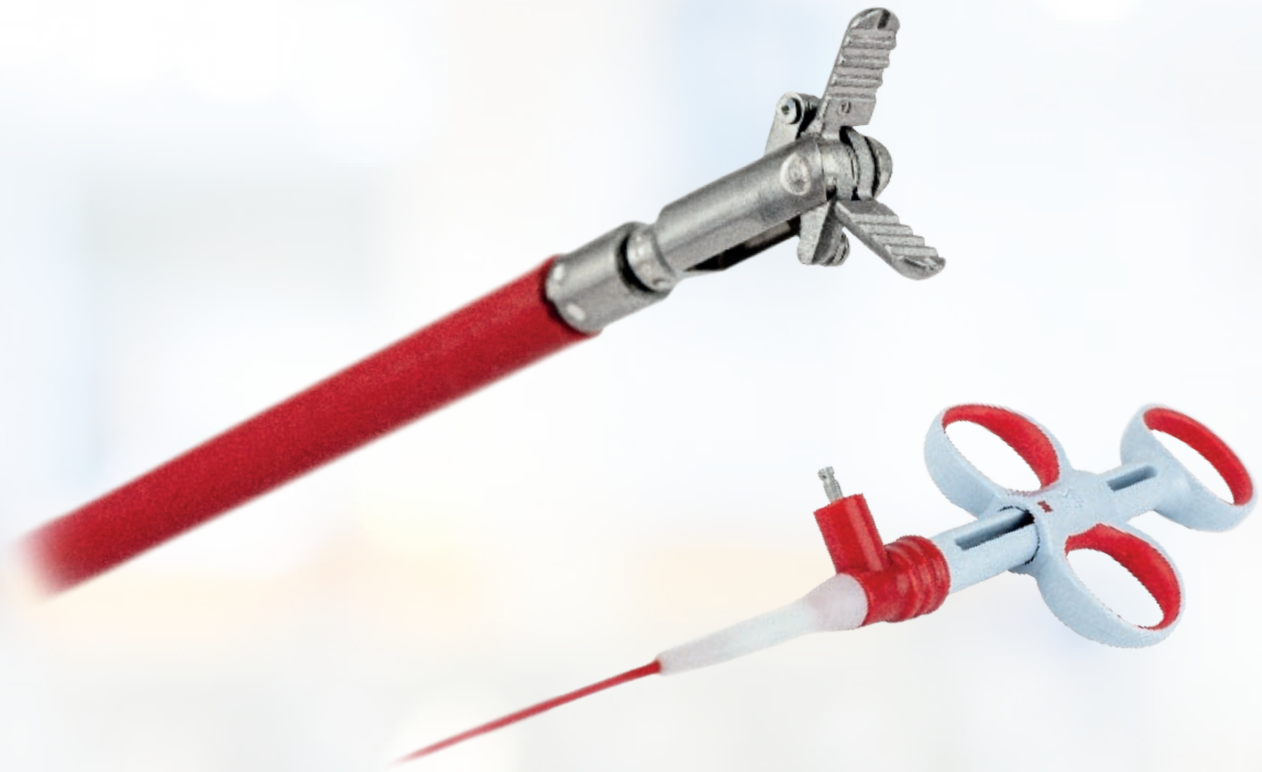
The MICRO-TECH cleaning brush set includes all necessary brushes for a thorough and easy cleaning of the endoscope. It contains one cleaning brush for the endoscope channels and one double header cleaning brush for the valve vents and ports. The brushes are individually hygienically packed.

SPECIFICATIONS

REF	Catheter Ø mm	Total length mm	Brushes Ø mm	Brush length mm
CLEANING BRUSH FOR VALVE VENT				
CB13-50120/01	1.3	160	5/12	20/40
COMBINATION CLEANING BRUSH				
CB18-T50110/23	1.8	2300	5-7 tapered/11	20/40
CLEANING BRUSH SET				
CB18-T5050/23-B				
CB18-T5050/23	1.8	2300	5-7 tapered	20/20
CB13-50120/01	1.3	-	5/12	20/40

Packaging unit: 100 pieces

Catheter colours of the brushes may vary.



ENSURE™

FORCEPS FOR SAFE COAGULATION

MICRO-TECH ENSURE™ Coagulation Forceps are designed to assist physicians in effectively coagulating bleeding sites during interventional endoscopic procedures. They allow the user to securely grasp vessels and cut or coagulate them using high-frequency current. Bleeding vessels can be reliably staunched during and after endoscopic submucosal dissection, without harming the surrounding tissue. This is ensured by the toothed cups of the forceps, which

are available in three different types. The serrated design of these forceps ensures a secure grip, preventing slippage during coagulation. Thanks to the maximum opening width of up to 7.2 mm, these forceps can also be used reliably to treat bleedings in a variety of locations. The ergonomic handle ensures precise and convenient operation. It can be used to rotate the forceps in either direction by 360°.

SPECIFIC CHARACTERISTICS

- For effective hemostasis during ESD and EMR
- Secure, non-slip hold
- Three different cup types
- Reliable, 360° bi-directional rotation
- Opening width 6.3 – 7.2 mm



Ergonomic 3-ring handle with soft grip and 360° coagulation connection



Type A: with tapered tip and teeth



Type B: with grooves for a broad contact surface



Type C: large branch with maximum opening width

SPECIFICATIONS

REF	Opening width mm	Length mm	Branch	Exterior diameter of distal tips mm	Working channel Ø mm
TYPE A					
CF-165-A	6.5	1650	tapered	≤ 2.7	≥ 2.8
CF-230-A	6.5	2300	tapered	≤ 2.7	≥ 2.8
TYPE B					
CF-165-B	6.3	1650	grooved	≤ 2.7	≥ 2.8
CF-230-B	6.3	2300	grooved	≤ 2.7	≥ 2.8
TYPE C					
CF-165-C	7.2	1650	oval	≤ 2.7	≥ 2.8
CF-230-C	7.2	2300	oval	≤ 2.7	≥ 2.8

Packaging unit: 10 pieces



FOREIGN BODY FORCEPS

QUALITY CRAFTED FOR HIGH PRECISION CONTROL

Due to the ergonomic 3-ring handle the one-time foreign body forceps can be used with ease and comfort. Each movement is passed exactly to the forceps – even in angled body regions. The calipers themselves are made

of high quality material and are perfectly manufactured. These qualities allow you to grab firmly, guaranteeing safe foreign body retrievals. The range includes forceps for gastroenterology, pneumology, paediatrics and urology.

SPECIFIC CHARACTERISTICS

- High-quality processing
- Covering with markings
- Ergonomic 3-ring handle
- Easy and safe operation
- Different areas of application
- 3 types: Alligator, 2-1 teeth and Griffin
- Sterile and individually wrapped
- Type Griffin also for stent-extraction and -repositioning



Type Griffin: long alligator jaw with 2:1 teeth



Type: 2-1 teeth

SPECIFICATIONS

REF	Type	Length mm	Ø mm
DISPOSABLE FOREIGN BODY FORCEPS - GASTROENTEROLOGY			
NGF03-11023230	2-1 teeth	2300	2.3
NGF13-11023230	Alligator	2300	2.3
NGF33-11023230	Griffin	2300	2.3
DISPOSABLE FOREIGN BODY FORCEPS - PNEUMOLOGY, PAEDIATRICS, UROLOGY			
NGF32-11018180	Griffin	1800	1.8
NGF32-11018120	Griffin	1200	1.8

Packaging unit: 10 pieces

Type Griffin is ideal and our recommendation for stent-extraction and -repositioning.



3-LUMEN PAPILOTOME

FOR PRECISE WIRE GUIDANCE AND CANNULATION

Positioning, cannulation and resection are the decisive features of a safe and successful papillotomy. The 3-lumen papillotome from MICRO-TECH meets these requirements in every way: Emerging from the working channel in the correct position, the atraumatic tip, tapered to 5 Fr, supports cannulation and the resection is done reliably at the "11 o'clock" marker. Maximum safety during resection

is also provided by optional proximal insulation of the cutting wire. The three lumens for cutting wire, guide wire and contrast media provide for a high level of safety and efficient contrast injection. Thanks to the ergonomic 3-ring grip handle, this papillotome is highly user-friendly and easy to control.

SPECIFIC CHARACTERISTICS

- 3 lumen for guide wire, cutting wire and contrast injection
- Optional insulation of proximal cutting wire
- Cutting direction at 11 o'clock
- Filiform tip, tapered to 5 Fr
- Working length: 2.000 mm
- Outer diameter: 2.5 mm
- Guide wire compatible fully mobile up to 0.035 inch



Precise adjustment function

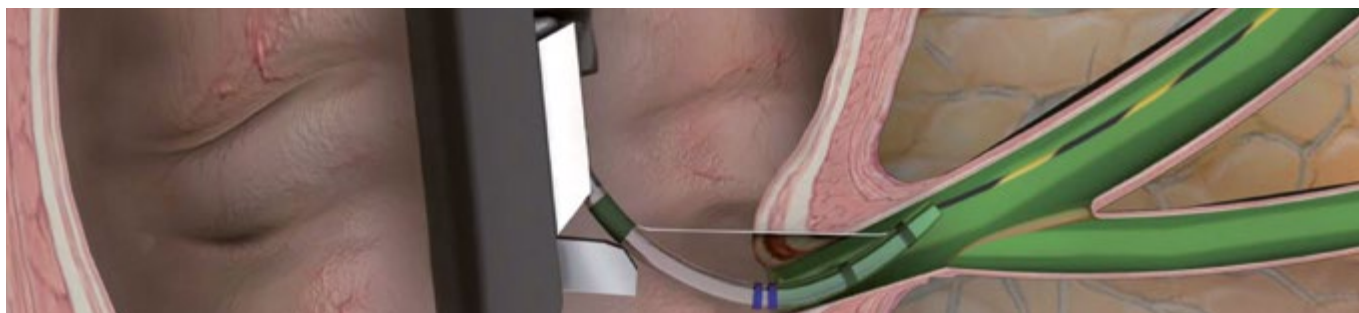


Tip: Precut



Tip: Needle knife





SPECIFICATIONS

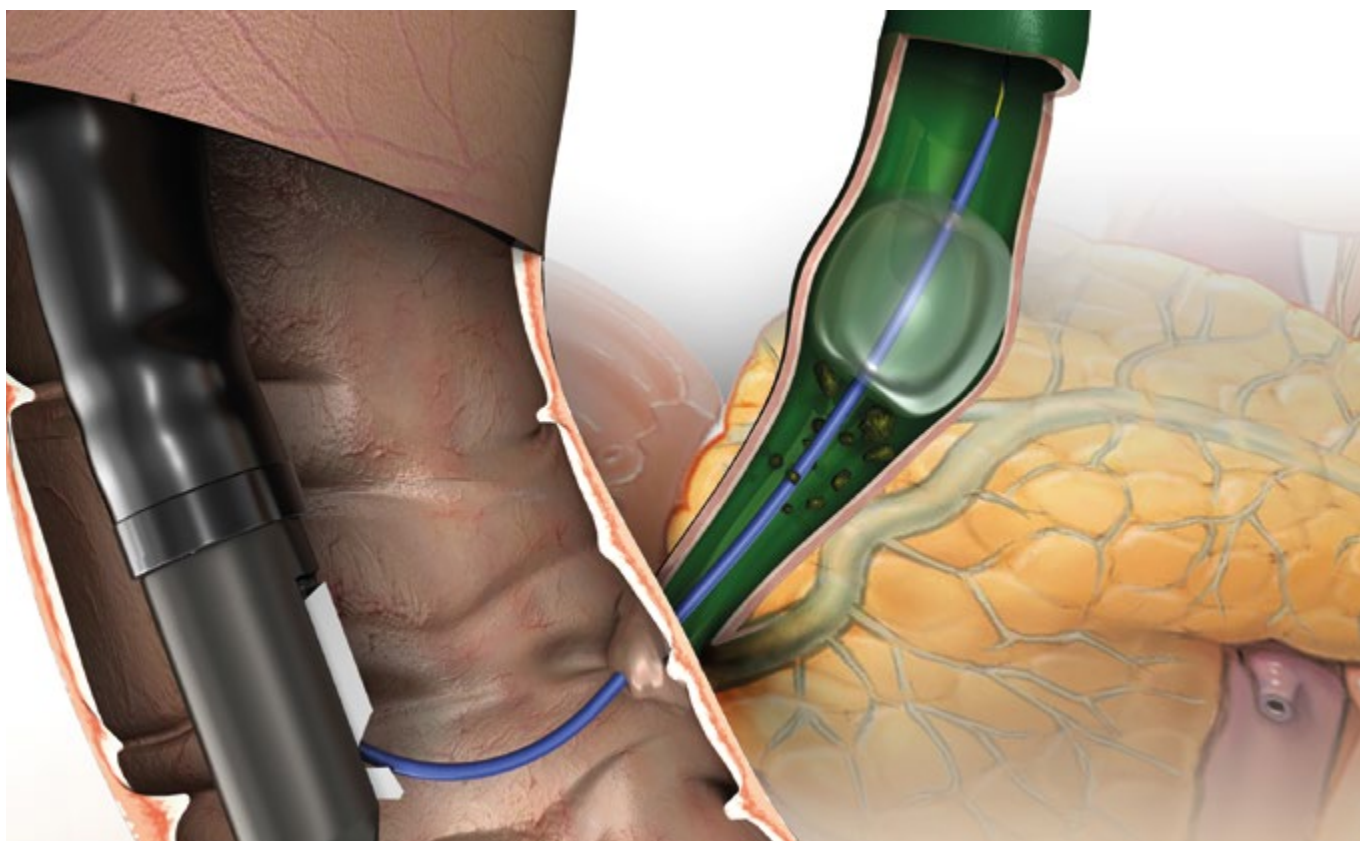
REF	Tip length mm	Cutting wire length mm	Partly insulated cutting wire	Preloaded guide wire	Ø working channel mm
PAPILLOTOME, 3-LUMEN, CONE-TIP					
DSP-30020-111111	0	20	No	No	2.8
DSP-30020-111211	0	20	Yes	No	2.8
DSP-30025-111111	0	25	No	No	2.8
DSP-30025-111211	0	25	Yes	No	2.8
DSP-30030-111111	0	30	No	No	2.8
DSP-30030-111211	0	30	Yes	No	2.8
DSP-30220-111111	2	20	No	No	2.8
DSP-30220-111211	2	20	Yes	No	2.8
DSP-30225-111111	2	25	No	No	2.8
DSP-30225-111211	2	25	Yes	No	2.8
DSP-30230-111111	2	30	No	No	2.8
DSP-30230-111211	2	30	Yes	No	2.8
DSP-30520-111111	5	20	No	No	2.8
DSP-30520-111211	5	20	Yes	No	2.8
DSP-30525-111111	5	25	No	No	2.8
DSP-30525-111211	5	25	Yes	No	2.8
DSP-30530-111111	5	30	No	No	2.8
DSP-30530-111211	5	30	Yes	No	2.8
DSP-30020-111121	0	20	No	Yes	2.8
DSP-30020-111221	0	20	Yes	Yes	2.8
DSP-30025-111121	0	25	No	Yes	2.8
DSP-30025-111221	0	25	Yes	Yes	2.8
DSP-30030-111121	0	30	No	Yes	2.8
DSP-30030-111221	0	30	Yes	Yes	2.8
DSP-30220-111121	2	20	No	Yes	2.8
DSP-30220-111221	2	20	Yes	Yes	2.8
DSP-30225-111121	2	25	No	Yes	2.8
DSP-30225-111221	2	25	Yes	Yes	2.8
DSP-30230-111121	2	30	No	Yes	2.8
DSP-30230-111221	2	30	Yes	Yes	2.8
DSP-30520-111121	5	20	No	Yes	2.8
DSP-30520-111221	5	20	Yes	Yes	2.8
DSP-30525-111121	5	25	No	Yes	2.8
DSP-30525-111221	5	25	Yes	Yes	2.8
DSP-30530-111121	5	30	No	Yes	2.8
DSP-30530-111221	5	30	Yes	Yes	2.8
PAPILLOTOME, 3-LUMEN, NEEDLE KNIFE					
DSP-30505-121111	0	5	No	No	2.8
DSP-30505-121211	0	5	Yes	No	2.8
DSP-30507-121111	0	7	No	No	2.8
DSP-30507-121211	0	7	Yes	No	2.8

Recommended guide wires 0.035": MTN-BM 89/45-A (straight), 600358-5 (straight), 600359-5 (J-Tip)

Recommended guide wires 0.025": MTN-BM 63/26-A (straight) and 600384-5 (straight)

Packaging unit: 2 pieces





SPECIFICATIONS

REF	Ø inches	Total length mm	Tip length mm	Tip form	Set-up	Covering
CLASSIC GUIDE WIRE						
600382-5	0.035"	4200	130	straight	hydrophilic, radiopaque	extra stiff \pm 0.035"
HYDRO-SLIDE GUIDE WIRE						
MTN-BM-63/45-A-S	0.025"	4500	60	straight	hydrophilic, radiopaque	extra stiff \pm 0.035"
MTN-BM-63/45-A-J-S	0.025"	4500	60	J-form	hydrophilic, radiopaque	extra stiff \pm 0.035"

REF	Injection	Lumen	Catheter Ø Fr.	Balloon Ø mm	Working length mm
STONE EXTRACTION BALLOONS					
SRB-T-9/12/15-20	Above (distal to the balloon)	3	7	9 / 12 / 15	2000
SRB-T-12/15/18-20	Above (distal to the balloon)	3	7	12 / 15 / 18	2000
SRB-T-15/18/21-20	Above (distal to the balloon)	3	7	15 / 18 / 21	2000
SRB-T-9/12/15-20-B	Below (proximal to the balloon)	3	7	9 / 12 / 15	2000
SRB-T-12/15/18-20-B	Below (proximal to the balloon)	3	7	12 / 15 / 18	2000
SRB-T-15/18/21-20-B	Below (proximal to the balloon)	3	7	15 / 18 / 21	2000

Recommended guidewires: MTN-BM 89/45-A (0.035 straight) and 600358-5 (0.035 straight)
Packaging unit: 1 piece



INTRODUCER-SYSTEMS WITHOUT STENT

SPECIFICATIONS



- One step introducer-system
- X-ray visible

New: Extended guide catheter

REF	Ø catheter	Guide catheter	Introducer length
BPDI-0740/22	7 FR	40 cm	220 cm
BPDI-0840/22	8.5 FR	40 cm	220 cm
BPDI-1040/22	10 FR	40 cm	220 cm
BPDI-1140/22	11.5 FR	40 cm	220 cm

INTRODUCER-SYSTEMS WITH PRE-LOADED STENT



- One step introducer-system
- X-ray visible

SPECIFICATIONS

STENT STRAIGHT



- Shape: straight
- 2 flaps
- 2 side-holes
- X-ray visible
- Material: PE

REF	Ø catheter	Stent working/ total length	Introducer length
BPDS-31114-0805/22	8.5 FR	5 / 7 cm	220 cm
BPDS-31114-0807/22	8.5 FR	7 / 9 cm	220 cm
BPDS-31114-0809/22	8.5 FR	9 / 11 cm	220 cm
BPDS-31114-0811/22	8.5 FR	11 / 13 cm	220 cm
BPDS-31114-1005/22	10 FR	5 / 7 cm	220 cm
BPDS-31114-1007/22	10 FR	7 / 9 cm	220 cm
BPDS-31114-1009/22	10 FR	9 / 11 cm	220 cm
BPDS-31114-1011/22	10 FR	11 / 13 cm	220 cm

SPECIFICATIONS

STENT CURVED



- Shape: 15° curved
- 2 flaps
- 2 side-holes
- X-ray visible
- Material: PE

REF	Ø catheter	Stent working/ total length	Introducer length
BPDS-32114-0805/22	8.5 FR	5 / 7 cm	220 cm
BPDS-32114-0807/22	8.5 FR	7 / 9 cm	220 cm
BPDS-32114-0809/22	8.5 FR	9 / 11 cm	220 cm
BPDS-32114-0811/22	8.5 FR	11 / 13 cm	220 cm
BPDS-32114-1005/22	10 FR	5 / 7 cm	220 cm
BPDS-32114-1007/22	10 FR	7 / 9 cm	220 cm
BPDS-32114-1009/22	10 FR	9 / 11 cm	220 cm
BPDS-32114-1011/22	10 FR	11 / 13 cm	220 cm





NETS

SAFELY REMOVE FOREIGN BODIES AND POLYPS

The MT net has been developed for the removal of polyps and foreign bodies and enables the reliable recovery of tissue samples. The net itself consists of a reinforced thread

material, which offers additional safety during recovery. Thanks to its unique dimensional stability and large opening, it facilitates work over several passes.

SPECIFIC CHARACTERISTICS

- Large net
- High quality manufacture
- Comfortable 3-ring handle
- Easy and precise opening



Shape stable MT net



SPECIFICATIONS

REF	Ø net mm	Snare	Working length mm	Ø working channel mm
RETRIEVAL NET				
NT-E-30/23-P	30	Oval	2300	2.8
NT-E-30/16-P	30	Oval	1600	2.8

Packaging unit: 10 pieces





DISPOSABLE BIOPSY FORCEPS

WHERE TECHNOLOGY AND RELIABILITY MEET

The biopsy forceps are extraordinarily sharp, which guarantees safe and effortless removal of significant tissue specimens. The CamDesign of our TechBite™ requires only very gentle contact pressure for a very good biopsy. The shortened distal end goes easy on the working

channel, even in angled positions. This is always guaranteed by the fully-mechanized production system used to manufacture TechBite™. With its classic shear joints, the TruBite combines easy handling with reliable quality.

SPECIFIC CHARACTERISTICS

- Significant biopsies
- A design that goes easy on the working channel
- Short distal end: 9 mm (TechBite™), 11.5 mm (TruBite)
- Wide product range



Cam-Design (Fig. TechBite™)

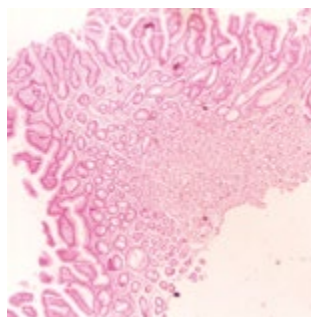


Scissors joint (Fig. TruBite)

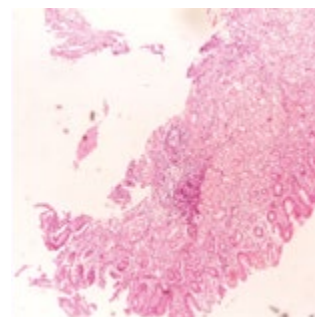


CONVINCING IN PRACTICAL USE

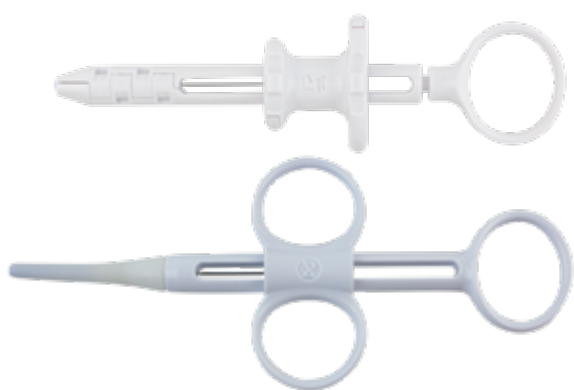
All of our forceps are equipped with a polyethylene coating. The labels can be consulted at any time for information regarding the withdrawal of the biopsy forceps.



Biopsate removed with a toothed cutting edge



Biopsate removed with a smooth cutting edge



HANDLE AVAILABLE IN 1-RING OR 3-RING VERSION

The TechBites™ are equipped with the 1-ring handle. This allows you to use a one-hand grip method.

The 3-ring handle is the comfortable version, with a soft, anti-slip rubber coating. This provides both additional safety as well as comfort during work. All of our biopsy forceps are furnished with this handle, with the exception of the TechBites™.

JAW SECTIONS FOR EVERY INTERVENTION

Whether for biopsies or for removal of small polyps – the disposable biopsy forceps are perfectly equipped for any task with different jaw sections: with a smooth or a toothed cutting edge, with or without a spike.



HIGH QUALITY COATING

The coating protects the working channel against scratching and provides a frictionless feed motion. The colored marking shows the removal of the forceps from the working channel in order to prevent damage to the mucous membrane. The forceps have been given different colors so they can be quickly allocated in accordance with working length:

Blue: 2300 mm or 2600 mm

Orange: 1800 mm

Yellow: Pediatric 1800 mm or 2600 mm



SELECTION OF MORE THAN 30 BIOPSY FORCEPS

The broad range includes forceps of various sizes, and with differing features. An extract from the portfolio can be found below, while next page offers a complete overview.

TECHBITE™



Jaw Ø 2.3 mm,
180 cm length



Jaw Ø 2.3 mm,
230 cm length



TRUBITE



Jaw Ø 2.3 mm,
180 cm length



Jaw Ø 2.3 mm,
230 cm length



SPECIAL FORCEPS

TECHBITE™ PAEDIATRICS



Jaw Ø 1.8 mm,
180 cm length



MACRO



Jaw Ø 3.0 mm,
230 cm length



TRUBITE PAEDIATRICS



Jaw Ø 1.8 mm,
180 cm length



LARGE CAPACITY



Jaw Ø 2.4 mm,
180 cm length



Jaw Ø 2.4 mm,
180 cm length



SPECIFICATIONS

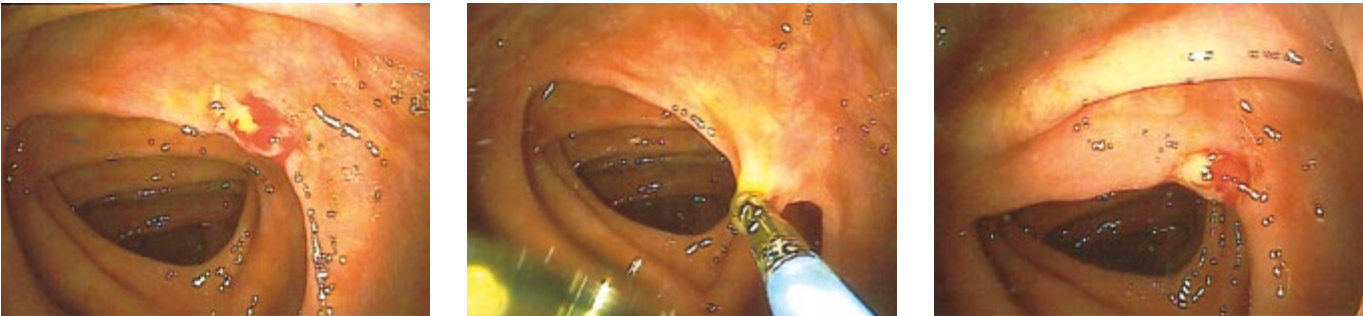
REF	Working channel Ø mm	Length mm	Opening width mm	Jaw Ø mm	Spike	Covering	Jaw	Grip
TECHBITE™								
EBF33-11023180	2.8	1800	6.7	2.3	No	Orange	Smooth	1-ring
EBF33-11023230	2.8	2300	6.7	2.3	No	Blue	Smooth	1-ring
EBF33-11123180	2.8	1800	6.7	2.3	Yes	Orange	Smooth	1-ring
EBF33-11123230	2.8	2300	6.7	2.3	Yes	Blue	Smooth	1-ring
EBF43-11023180	2.8	1800	6.7	2.3	No	Orange	Serrated	1-ring
EBF43-11023230	2.8	2300	6.7	2.3	No	Blue	Serrated	1-ring
EBF43-11123180	2.8	1800	6.7	2.3	Yes	Orange	Serrated	1-ring
EBF43-11123230	2.8	2300	6.7	2.3	Yes	Blue	Serrated	1-ring
TRUBITE								
EBF53-11023180	2.8	1800	6.7	2.3	No	Orange	Smooth	3-ring
EBF53-11023230	2.8	2300	6.7	2.3	No	Blue	Smooth	3-ring
EBF53-11123180	2.8	1800	6.7	2.3	Yes	Orange	Smooth	3-ring
EBF53-11123230	2.8	2300	6.7	2.3	Yes	Blue	Smooth	3-ring
EBF63-11023180	2.8	1800	6.7	2.3	No	Orange	Serrated	3-ring
EBF63-11023230	2.8	2300	6.7	2.3	No	Blue	Serrated	3-ring
EBF63-11123180	2.8	1800	6.7	2.3	Yes	Orange	Serrated	3-ring
EBF63-11123230	2.8	2300	6.7	2.3	Yes	Blue	Serrated	3-ring
SPECIAL FORCEPS								
TECHBITE™ – PAEDIATRICS								
EBF33-11018180	2.0	1800	4.5	1.8	No	Yellow	Smooth	1-ring
EBF43-11018180	2.0	1800	4.5	1.8	No	Yellow	Serrated	1-ring
EBF43-11118180	2.0	1800	4.5	1.8	Yes	Yellow	Serrated	1-ring
TRUBITE – PAEDIATRICS								
EBF53-11018180	2.0	1800	4.5	1.8	No	Yellow	Smooth	3-ring
EBF53-11118180	2.0	1800	4.5	1.8	Yes	Yellow	Smooth	3-ring
EBF13-11018180	2.0	1800	4.5	1.8	No	Yellow	Serrated	3-ring
EBF13-11118180	2.0	1800	4.5	1.8	Yes	Yellow	Serrated	3-ring
TRUBITE – ENTEROSCOPY								
EBF03-11018260	2.0	2600	4.5	1.8	No	Yellow	Smooth	3-ring
EBF03-11023260	2.8	2600	6.7	2.3	No	Blue	Smooth	3-ring
TRUBITE – MACRO								
EBF03-01030230	3.2	2300	8.5	3.0	No	Blue	Smooth	3-ring
EBF03-01130230	3.2	2300	8.5	3.0	Yes	Blue	Smooth	3-ring
EBF13-01030230	3.2	2300	8.5	3.0	No	Blue	Serrated	3-ring
EBF13-01130230	3.2	2300	8.5	3.0	Yes	Blue	Serrated	3-ring
LARGE CAPACITY								
LCEBF63-10024180	2.8	1800	9.0	2.4	No	Orange	Serrated	3-ring
LCEBF63-10024230	2.8	2300	9.0	2.4	No	Blue	Serrated	3-ring
LCEBF63-10124180	2.8	1800	9.0	2.4	Yes	Orange	Serrated	3-ring
LCEBF63-10124230	2.8	2300	9.0	2.4	Yes	Blue	Serrated	3-ring

Packaging unit: 10 pieces



SUCCESSFUL IN PRACTICAL USE

The hot biopsy forceps from MICRO-TECH are particularly suitable for use in patients with an increased risk of bleeding. If bleeding occurs during tissue sampling or polyp removal, this can be treated immediately and stopped via coagulation current.



Hot biopsy forceps in endoscopic use



TARGET-ORIENTED USE OF POWER

The 3-ring handle is equipped with a universal HF-connection for safe and controlled power supply. The PTFE insulation of the metal coil is impact-resistant and prevents current conductive contact with the tissue.

SPECIFICATIONS

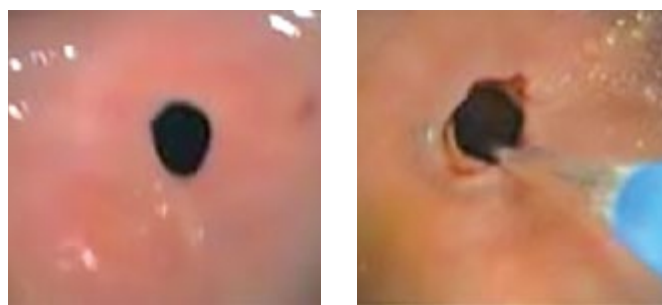
REF	Ø mm	Length mm	Spike	Insulated	Jaw
HOT-BIOPSY FORCEPS WITH COATING					
HBF05-11018120	1.8	1200	No	Yes	Standard
HBF05-11018180	1.8	1800	No	Yes	Standard
HBF05-11023180	2.3	1800	No	Yes	Standard
HBF05-11023230	2.3	2300	No	Yes	Standard

Packaging unit: 10 pieces



SUCCESSFUL IN PRACTICAL USE

Stenoses are effectively dilated using the MICRO-TECH dilation balloons. The balloon dilates the stenosis safely and gently and prepares the area to be treated in an optimum manner. The uniform distribution of pressure over the entire working length of the balloon and the outstanding dimensional stability during dilation guarantee excellent therapeutic success over the entire length of the stenosis.



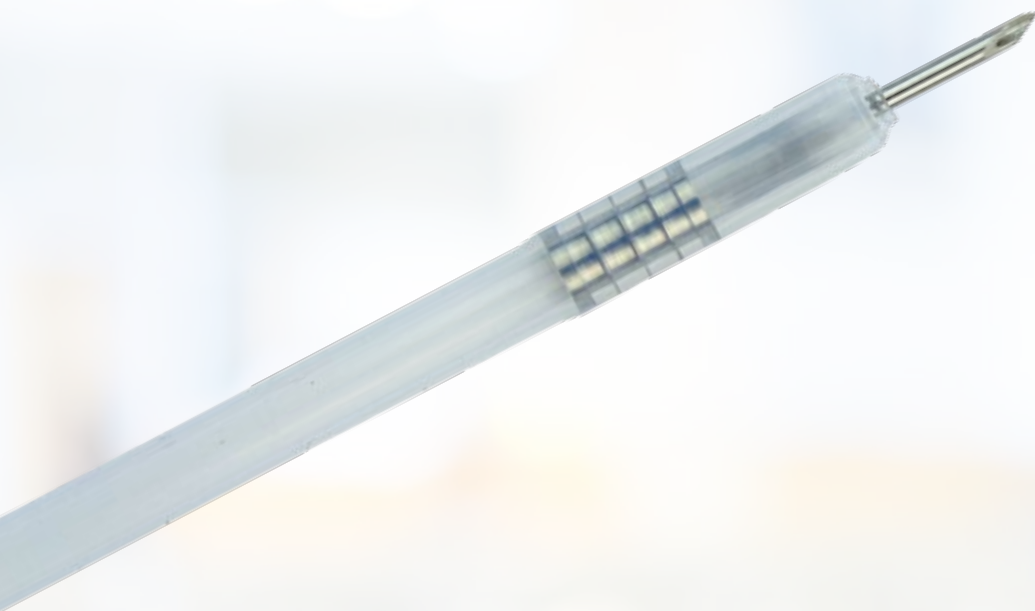
Endoscopic control during dilation therapy

SPECIFICATIONS

REF	Balloon Ø mm	Balloon length mm	Catheter Ø Fr.	Catheter length mm	Channel Ø mm	Application
TTS – DILATION BALLOONS						
BDC-8/55-7/18	8	55	7	1800	2.8	Oesophagus/Bile duct
BDC-8/55-7/24	8	55	7	2400	2.8	Pylorus/Colon
BDC-10/55-7/18	10	55	7	1800	2.8	Oesophagus/Bile duct
BDC-10/55-7/24	10	55	7	2400	2.8	Pylorus/Colon
BDC-12/55-7/18	12	55	7	1800	2.8	Oesophagus
BDC-12/55-7/24	12	55	7	2400	2.8	Pylorus/Colon
BDC-16/55-7/18	16	55	7	1800	2.8	Oesophagus
BDC-16/55-7/24	16	55	7	2400	2.8	Pylorus/Colon
BDC-18/55-7/18	18	55	7	1800	2.8	Oesophagus
BDC-18/55-7/24	18	55	7	2400	2.8	Pylorus/Colon
BDC-20/55-7/18	20	55	7	1800	4.2	Oesophagus
BDC-20/55-7/24	20	55	7	2400	4.2	Pylorus/Colon
BDC-12/80-7/18	12	80	7	1800	2.8	Oesophagus
BDC-12/80-7/24	12	80	7	2400	2.8	Pylorus/Colon
BDC-16/80-7/18	16	80	7	1800	2.8	Oesophagus
BDC-16/80-7/24	16	80	7	2400	2.8	Pylorus/Colon
BDC-18/80-7/18	18	80	7	1800	2.8	Oesophagus
BDC-18/80-7/24	18	80	7	2400	2.8	Pylorus/Colon
BDC-20/80-7/18	20	80	7	1800	4.2	Oesophagus
BDC-20/80-7/24	20	80	7	2400	4.2	Pylorus/Colon
ACHALASIE-BALLOONS						
BDC-26/80-7/10	26	80	7	1000	–	Achalasie
BDC-30/80-7/10	30	80	7	1000	–	Achalasie
BDC-34/80-7/10	34	80	7	1000	–	Achalasie
FIXED WIRE BALLOONS						
FWB-06/80-6/18-M	6-7-8	80	6	1800	2.8	Oesophagus
FWB-08/80-6/18-M	8-9-10	80	6	1800	2.8	Oesophagus
FWB-10/80-6/18-M	10-11-12	80	6	1800	2.8	Oesophagus
FWB-12/80-6/18-M	12-13.5-15	80	6	1800	2.8	Oesophagus
FWB-15/80-6/18-M	15-16.5-18	80	6	1800	2.8	Oesophagus
FWB-18/80-6/18-M	18-19-20	80	6	1800	2.8	Oesophagus

Packaging unit: 1 piece / suitable for guide wires with 0.035"





INJECTION NEEDLE

RELIABLE AND SAFE TO THE TIP

The disposable MICRO-TECH's disposable injection needle facilitates clinical practice due to its ergonomic handle and especially sharp needle. The anti-skid design guarantees convenient control with just one hand. For

even more precise punctures the handle can be locked in several stages. When the needle is released, it snaps back into the catheter to avoid damage to the working channel.

SPECIFIC CHARACTERISTICS

- Ergonomic anti-slip handle
- Adjustable pressure pad
- Automatic needle-feed
- Soft, atraumatic silicone head
- Needle with extremely sharp, precision cut
- Different needle diameters
- LL needle connector



Needle completely retracted



Compact ergonomical design



SPECIFICATIONS

REF	Needle stroke mm	Needle Ø	Working length Ø mm	Length mm
INJECTION NEEDLE – POLYPECTOMY /EMR				
IN12-195232302	5	19 G = 0.9 mm	2.8	2300
IN12-225232302	5	22 G = 0.7 mm	2.8	2300
IN12-255232302	5	25 G = 0.5 mm	2.8	2300
INJECTION NEEDLE – ESD				
IN12-224232302	4	22 G = 0.7 mm	2.8	2300
IN12-254232302	4	25 G = 0.5 mm	2.8	2300

Packaging unit: 10 pieces

Also available in other versions



SAFETY NEEDLE SN

PRECISION WITH A UNIQUE SAFETY CONCEPT

With the injection needles from bauer medical, punctures are safe and precise. On one hand, it is the newly developed handle with a particularly ergonomic shape which ensures a tactile feeling and an audible locking. On the other hand, it is the special bevel-style grinding of the needle, allowing for precise punctures, even under difficult

conditions. Matching the specifications of the UVV for enhanced safety, this injection needle provides even more protection: Upon completion of the application, the proximal handle can be kinked at a defined breaking point. The forced retention of the needle in the tip of the catheter helps to avoid injuries.

SPECIFIC CHARACTERISTICS

- Handle with tactile ergonomics
- Needle with special bevel-style grinding
- Distal protector head for needle tip
- CLICK noise when inserting and retracting the needle
- Unique safety concept for non-injurious disposal
- Needle diameter of 0.5 / 0.7 / 0.9 mm



SPECIFICATIONS

REF	Needle stroke mm	Needle Ø mm	Tube Ø mm	Length mm
INJECTION NEEDLE SAFETY NEEDLE SN				
SN1-I10-505-18-120	5	0.5	1.8	1200
SN1-I10-505-18-180	5	0.5	1.8	1800
SN1-I10-507-23-230	5	0.7	2.3	2300
SN1-I10-509-23-230	5	0.9	2.3	2300

Packaging unit: 10 pieces, relay prices on request



SPECIFICATIONS

REF	Description	Length mm	Ø outside mm	Ø inside mm
PROCTOSCOPE				
RA1480	Size S for paediatrics, color: white	80	14	12
RA2295	Size M, color: yellow	95	22	20
RA2695	Size L, color: red	95	26	24
RA0001	Adapter for cold-light-source			
Packaging unit: Proctoscopes: 100 pieces / Cold-light-adapter: 1 piece				
REF	Compatible endoscope distal end Ø mm			
EMBRELLA				
EM-S-01	12.8-14.5	Packaging unit: 10 pieces		
EM-S-02	11.5-13	Packaging unit: 10 pieces		
REF	Description	Measurements		
MOUTHGUARD				
AC01-102.M	Disposable mouthguard, yellow, NO strap	Medium (M)		
AC01-103.A	Disposable mouthguard, atraumatic design, blue, latex free textile strap	Atraumatic (A)		
AC01-103.M	Disposable mouthguard, blue, textile strap	Medium (M)		
AC01-103.P	Disposable pediatric mouthguard, latex free textile strap	Pediatric (P)		
AC01-150	Disposable textile strap, blue (also available separately)	Medium (M)		
COLOSHORTS				
TX01-101.UZ	Disposable colonoscopy examination trousers, dark blue, material PP	Dimensions: 130 x 65 cm, universal size, Packaging unit: 100 pieces		
INSTRUMENT CLOTH				
TX03-101.M4	Light blue, 4 pockets (l x w: 20 x 25 cm each)	90 x 70 cm		
BIOPSY VALVES				
AC03-102.O	Blue, for Olympus and Fujifilm endoscopes (G5 and higher)			
AC03-101.P	Red, for Pentax endoscopes			
AS2450000	Disposable biopsy valve with flush connection, suitable for Olympus and Fujifilm endoscopes			
AS2460000	Disposable biopsy valve with flush connection, suitable for Pentax endoscopes			
POLYP TRAP				
BBP-50	Polyp trap with 4-chamber			
PROTRAP LUMA™				
BBPA00001	ProTrap Luma™ In-Line Polyp Trap		Packaging unit: 25 pcs/box	
BBPA10001	ProTrap Luma™ Specimen Tray		Packaging unit: 50 pcs/box	





DAILYSNARE

MORE COMFORT AND RELIABILITY IN EVERYDAY HOSPITAL ROUTINE

In order to make the removal of polyps in everyday hospital routine as efficient as possible, MICRO-TECH has developed a program of disposable polypectomy snares which perfectly combines quality with cost effectiveness. Each oval snare is made of a specially stranded wire, with an during radial force, high dimensional stability and precise cutting properties. The 3-ring handle offers a secure hold and transmits every movement reliably to the snare.

SPECIFIC CHARACTERISTICS

- Very comfortable to use
- Reliable and safe
- Innovative HF-connection
- Ergonomic 3-ring handle
- Excellent cutting properties
- High strength of shape

SUCCESSFUL IN PRACTICAL USE

The special stranded wire of DailySnare endows the snare with the radial force it needs to open and be controlled in any position, easily and reliably. DailySnare has proved its worth as a reliable solution in daily routine work owing to its enormous dimensional stability and good cutting properties. Thanks to the new handle the snare can easily be opened and closed even if connected to the HF-cable.

SPECIFICATIONS

REF	Catheter Ø mm	Length mm	Snare Ø mm	Snare type
POLYPECTOMY SNARES				
PFS01-01023230	2.3	2300	10	Oval
PFS01-01523230	2.3	2300	15	Oval
PFS01-02023230	2.3	2300	20	Oval
PFS01-02423230	2.3	2300	24	Oval
PFS01-03623230	2.3	2300	36	Oval
PFS01-12423230	2.3	2300	24	Hexagonal
PFS01-22423230	2.3	2300	24	Crescent
PFS01-33023230	2.3	2300	10/ 20/ 30	3 in 1 vario

Packaging unit: 10 pieces

EC Certificate Full Quality Assurance System: Certificate CN19/41071

The management system of

Micro-Tech (Nanjing) Co., Ltd.

No. 10 Gaoke Third Road, Nanjing National Hi-Tech, Industrial Development Zone,
Nanjing, 210032, Jiangsu Province, P.R. China

has been assessed and certified as meeting the requirements of

Directive 93/42/EEC on medical devices, Annex II (excluding Section 4)

For the following products

The scope of registration appears on page 2 of this certificate.

This certificate is valid from 16 December 2019 until 24 May 2024
and remains valid subject to satisfactory surveillance audits.

Issue 1. Certified since 26 September 2013
and first certified by SGS Belgium NV since 16 December 2019

Certification is based on reports numbered CN/SZH 8403MDD

This is a multi-site certification.
Additional site details are listed on subsequent pages

Authorised by

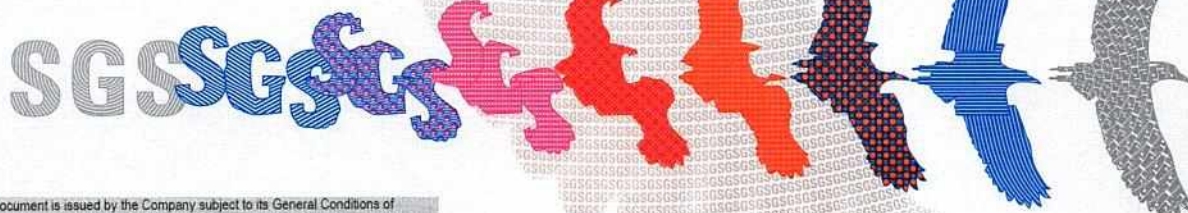


SGS Belgium NV, Notified Body 1639

SGS House Noordertaan 87 2030 Antwerp Belgium
t +32 (0)3 545-48-48 f +32 (0)3 545-48-49 www.sgs.com

LPMD5007 - Certificate CE1639 Annex II-4, EN rev. 02

Page 1 of 2



This document is issued by the Company subject to its General Conditions of Certification Services, unless otherwise agreed, accessible at www.sgs.com/terms_and_conditions.htm. Attention is drawn to the limitations of liability, indemnification and jurisdictional issues established therein. The authenticity of this document may be verified at <https://www.sgs.com/en/certified-clients-and-products/certified-client-directory>. Any unauthorized alteration, forgery or falsification of the content or appearance of this document is unlawful and offenders may be prosecuted to the fullest extent of the law.

Micro-Tech (Nanjing) Co., Ltd.

Directive 93/42/EEC

on medical devices, Annex II (excluding section 4)

Issue 1

Detailed scope

Sterile Non Vascular Stent (Biliary Stent, Esophageal Stent, Intestinal Stent, Tracheal Stent)
Sterile medical devices used for clinical endoscopic procedure including
Sterile Dilation Balloon (Disposable Dilation Balloon , Disposable Multistage Dilation Balloon Catheter), Sterile Disposable Hot Biopsy Forceps, Sterile Injection Needle, Sterile Nasal Biliary Drainage Set, Sterile Hot Snare Sterile Stone Extraction Basket, Sterile Cold Snare, Non Vascular sterile Hydro Slide Guidewire, Sterile Biliary Drainage Catheter, Biliary Drainage Catheter Introducer System, Biliary Drainage Catheter with Introducer System, Sterile Biliary Stone Retrieval Balloon Catheter, Sterile Repositionable Hemostasis Clipping Device to be intended for short term use Sterile Pancreatic Pseudocyst Stent with Delivery System to be intended for short term use in the body within 30 days, Sterile Sphincterotome, Non sterile OXY CO₂ Bite Block used to protect the endoscope insertion tube and oesophageal dilators from being bitten by the patient. Sterile Biliary Nitinol Stent Set, short-wire compatible
Class I (Sterility aspects only Restricted to the aspects of manufacture concerned with securing and maintaining sterile condition):
Sterile Spray Catheter—used for lavage, spraying of a medical solution or contrast medium, Sterile Cytology Brush, Sterile Fixed Wire Balloon (ABC Dilatation Balloon Catheter, Rapide™ Multistage Dilatation Balloon Catheter) use in adult and adolescent populations to endoscopically dilate strictures of the esophagus for transient use

Where the above scope includes class III medical device(s), a valid EC Design Examination Certificate according to Annex II (Section 4) is a mandatory requirement for each device in addition to this certificate to place that device on the market

Additional facilities

No. 199 Medicine Valley Avenue, Nanjing National Hi-Tech, Industrial Development Zone, Nanjing, Jiangsu Province, 210032, P.R.China

EC Certificate Full Quality Assurance System: CN13/20558

The management system of

Micro-Tech (Nanjing) Co., Ltd.

No. 10 Gaoke Third Road, Nanjing National Hi-Tech, Industrial Development Zone,
Nanjing, 210032, Jiangsu Province, P.R. China

has been assessed and certified as meeting the requirements of

Directive 93/42/EEC

on medical devices, Annex II (excluding Section 4)

For the following products

The scope of registration appears on page 2 of this certificate.

This certificate is valid from 26 September 2019 until 24 May 2024
and remains valid subject to satisfactory surveillance audits.

Re certification audit due before 04 September 2022

Issue 12. Certified since 26 September 2013

Certification is based on reports numbered CN/SZH 8403MDD

This is a multi-site certification.

Additional site details are listed on the subsequent page.

Authorised by

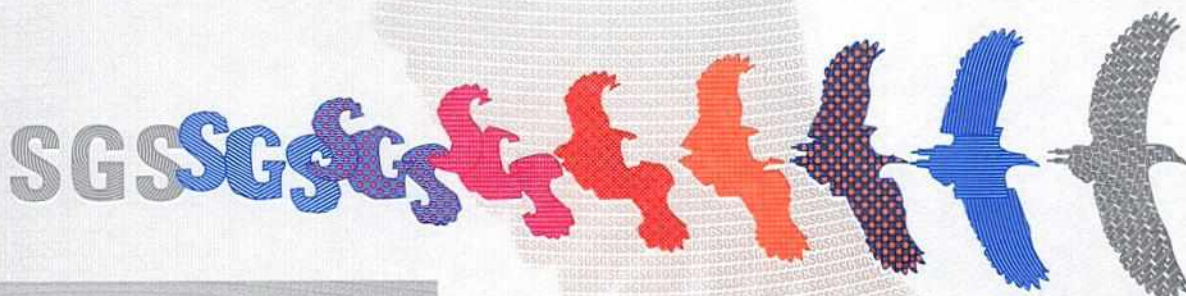
Jonathan M. Hall

SGS United Kingdom Ltd, Notified Body 0120

202B Worle Parkway, Weston-super-Mare, BS22 6WA UK
t +44 (0)1934 522917 f +44 (0)1934 522137 www.sgs.com

SGS CE 02 0315 M2

Page 1 of 2



Micro-Tech (Nanjing) Co., Ltd.

Directive 93/42/EEC

on medical devices, Annex II (excluding section 4)

Issue 12

Detailed scope

Sterile Non Vascular Stent (Biliary Stent, Esophageal Stent, Intestinal Stent, Tracheal Stent)
Sterile medical devices used for clinical endoscopic procedure including
Sterile Dilation Balloon (Disposable Dilation Balloon, Disposable Multistage Dilation Balloon Catheter), Sterile Disposable Hot Biopsy Forceps, Sterile Injection Needle, Sterile Nasal Biliary Drainage Set, Sterile Hot Snare Sterile Stone Extraction Basket, Sterile Cold Snare, Non Vascular sterile Hydro Slide Guidewire, Sterile Biliary Drainage Catheter, Biliary Drainage Catheter Introducer System, Biliary Drainage Catheter with Introducer System, Sterile Biliary Stone Retrieval Balloon Catheter, Sterile Repositionable Hemostasis Clipping Device to be intended for short term use Sterile Pancreatic Pseudocyst Stent with Delivery System to be intended for short term use in the body within 30 days, Sterile Sphincterotome, Non sterile OXY CO₂ Bite Block used to protect the endoscope insertion tube and oesophageal dilators from being bitten by the patient. Sterile Biliary Nitinol Stent Set, short-wire compatible
Class I (Sterility aspects only Restricted to the aspects of manufacture concerned with securing and maintaining sterile condition): Sterile Spray Catheter—used for lavage, spraying of a medical solution or contrast medium, Sterile Cytology Brush, Sterile Fixed Wire Balloon (ABC Dilatation Balloon Catheter, Rapide™ Multistage Dilatation Balloon Catheter) use in adult and adolescent populations to endoscopically dilate strictures of the esophagus for transient use

Where the above scope includes class III medical device(s), a valid EC Design Examination Certificate according to Annex II (Section 4) is a mandatory requirement for each device in addition to this certificate to place that device on the market

Additional facilities

No. 199 Medicine Valley Avenue, Nanjing National Hi-Tech, Industrial Development Zone, Nanjing, Jiangsu Province, 210032, P.R. China

Certificate CN13/20559

SGS

The management system of

Micro-Tech (Nanjing) Co., Ltd.

No. 10 Gaoke Third Road, Nanjing National Hi-Tech, Industrial Development Zone, Nanjing, 210032, Jiangsu Province,
P.R. China

has been assessed and certified as meeting the requirements of

ISO 13485:2016

EN ISO 13485:2016

For the following activities

The Scope of Registration appears on page 2 of this certificate

This certificate is valid from 27 September 2022 until 26 September 2025 and remains valid subject to satisfactory surveillance audits.

Issue 13. Certified since 26 September 2013

Certified activities performed by additional sites are listed on subsequent pages.

Jonathan M. Hall

Authorised by
Jonathan Hall
Global Head - Certification Services

SGS United Kingdom Ltd
Rossmore Business Park, Ellesmere Port, Cheshire, CH65 3EN, UK
t +44 (0)151 350-6666 - www.sgs.com



This document is an authentic electronic certificate for Client' business purposes use only. Printed version of the electronic certificate are permitted and will be considered as a copy. This document is issued by the Company subject to SGS General Conditions of certification services available on [Terms and Conditions](#) | SGS. Attention is drawn to the limitation of liability, indemnification and jurisdictional clauses contained therein. This document is copyright protected and any unauthorized alteration, forgery or falsification of the content or appearance of this document is unlawful.



Micro-Tech (Nanjing) Co., Ltd.

ISO 13485:2016

EN ISO 13485:2016

Design and Manufacture of Sterile Cytology Brush, Dilation Balloon (Disposable Dilation Balloon, Disposable Multistage Dilation Balloon Catheter), Disposable Hot Biopsy Forceps, Injection Needle, Non-Vascular Stent, Snare, Spray Catheter, Stone Extraction Basket, Single-Use Cleaning Brush, Single Use Bite Block, Endoscopy Working Channel Valves, Polyp Collection Kit, Cold Snare (used for clinical endoscopic procedure), Hydro Slide Guidewire (used for clinical endoscopic procedure), Biliary Drainage Catheter and Introducer Systems, Biliary Stone Retrieval Balloon Catheter, Repositionable Hemostasis Clipping Device, Pancreatic Pseudocyst Stent with Delivery System, Sphincterotome, Fixed Wire Balloon (ABC Dilatation Balloon Catheter, Rapide™ Multistage Dilatation Balloon Catheter), Sterile Biliary Nitinol Stent Set, short-wire compatible.

Provision of Sterilization Service for Medical Devices using Ethylene Oxide Gas in accordance with EN ISO 11135:2014.



This document is an authentic electronic certificate for Client* business purposes use only. Printed version of the electronic certificate are permitted and will be considered as a copy. This document is issued by the Company subject to SGS General Conditions of certification services available on [Terms and Conditions](#) | SGS. Attention is drawn to the limitation of liability, indemnification and jurisdictional clauses contained therein. This document is copyright protected and any unauthorized alteration, forgery or falsification of the content or appearance of this document is unlawful.



Certificate CN13/20559, continued

Micro-Tech (Nanjing) Co., Ltd.

SGS

ISO 13485:2016

EN ISO 13485:2016

Issue 13
Sites
Micro-Tech (Nanjing) Co., Ltd. No. 10 Gaoke Third Road, Nanjing National Hi-Tech, Industrial Development Zone, Nanjing, 210032, Jiangsu Province, P.R. China
Micro-Tech (Nanjing) Co., Ltd. No. 199. Medicine Valley Avenue, Nanjing National Hi-Tech, Industrial Development Zone, Nanjing 210032, Jiangsu Province, P.R.China



This document is an authentic electronic certificate for Client* business purposes use only. Printed version of the electronic certificate are permitted and will be considered as a copy. This document is issued by the Company subject to SGS General Conditions of certification services available on [Terms and Conditions](#) | [SGS](#). Attention is drawn to the limitation of liability, indemnification and jurisdictional clauses contained therein. This document is copyright protected and any unauthorized alteration, forgery or falsification of the content or appearance of this document is unlawful.

