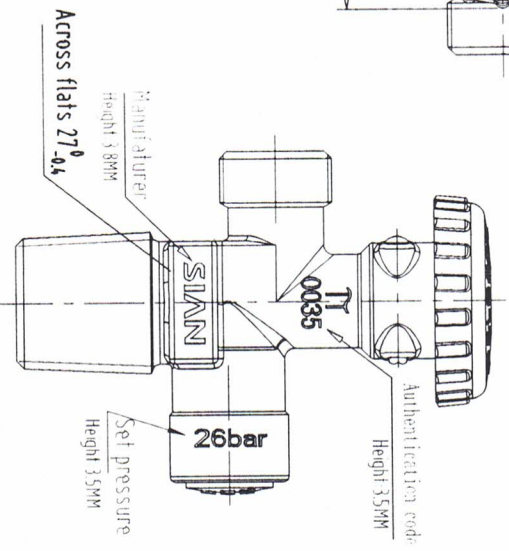
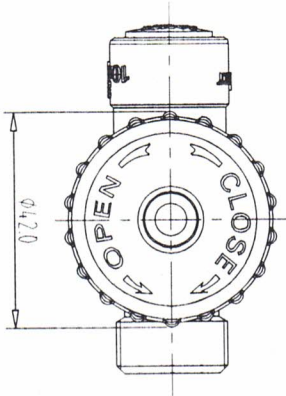
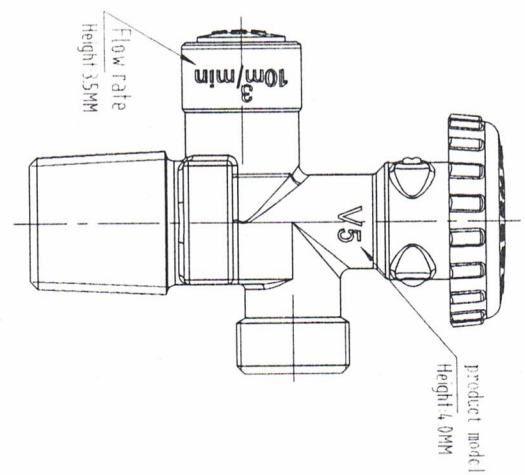
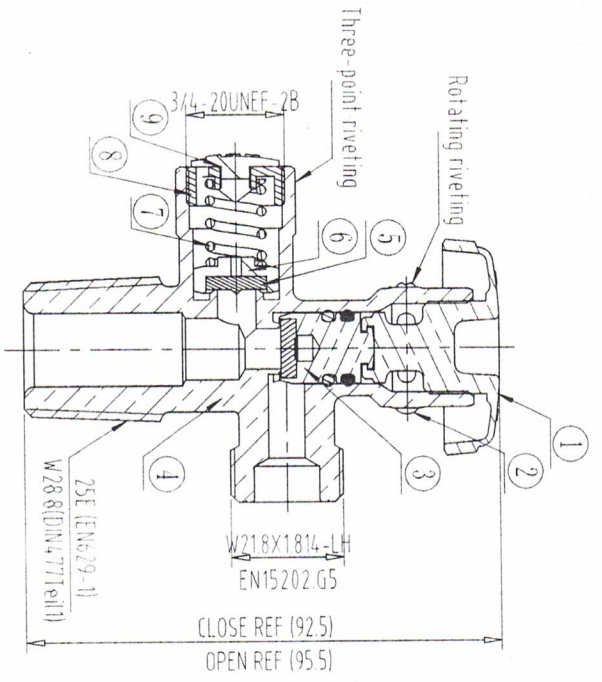


Technical Requirement

1. Designed as per: EN ISO 15995:2010, 3S EN 13953:2015, EN 15292:2019;
2. Relief valve's pressure parameter:
Nominal set pressure: 26bar;
Start to discharge pressure: 22.1-29.9bar (85%-115% nominal set pressure);
Reset pressure: >=18.2bar (70% nominal set pressure);
Flow capacity: >=10.0m³ of free air/min;
3. Manufacture date print at the plane of body spanner across at 27-40;
4. External and internal tightness test: 0.1bar, 20.8bar (80% nominal set pressure);
5. Endurance test: conform to EN ISO 15995:2010 5.11;
6. Hydraulic pressure test: 45bar;
7. Valve shown in the "off" position, close valve distance of min 2.5-3.0mm;
the closing torque shall not exceed 3.0 N.m;
8. Working temperature: -20C~+65C;



9	99-026-019	DISPLAY SHEET	PE-5.811	1	
8	99-094-104	SPRING SEAT	378060	1	
7	99-098-261	SAFETY SPRING	SI.S204	1	
6	99-026-023A	SAFETY VALVE SEAT	378000	1	
5	99-017-011	SAFETY FLAT RAD	NBR	1	
4	06-820-096	VALVE BODY	HP.56-1	1	
3	98-020-059	VALVE ASSEMBLY		1	
2	99-020-023	PLNS	HP.2	2	
1	99-017-107	HANDLE	HP.59-1	1	
Ma	Handling No.	Name	Materials	Qty.	Remarks
		LPG Valve		Drawing No.	
		Asseblby		06-820-796	
				Type No.	V5 (25E)
Mark	No.	Document Number	Sign	Date	
Design	Dimensioning	2006-20	Process		
Project			Standard		
Check					
Examine			Approve		
		Drawing Mark	Weight (g)	Ratio	
		A		1:1	
		No. of pages	No.		
		SIANN			
		Ningbo Fuhua Valve Co., LTD.			