

The universal
language of the
laboratory



Waters
THE SCIENCE OF WHAT'S POSSIBLE.™



There is no substitute for data quality

SAVE TIME, AUTOMATE TASKS, AND ELIMINATE DATA VULNERABILITY

Empower™ Chromatography Data System (CDS) helps you achieve the highest quality results in your laboratory.

With a suite of flexible functionality that grows to meet your changing quality, business, and laboratory needs, Empower has been intentionally designed to help you address your most rigorous chromatographic, regulatory, and networking challenges.

Empower helps your entire laboratory operate better, with the industry's most advanced data acquisition, management, processing, analytics, and reporting capabilities. Easily scalable from a single workstation to an enterprise-wide network, where you can work at the bench, across sites, and even remotely with on-premise or cloud options, Empower provides you an environment where your records are traceable, so you always have full control of your most critical asset – your data.



The reach of Empower extends to over 500,000 users worldwide on over 5,000 networks. Empower is continuously enhanced with flexible, automated, and user-friendly functionality that comes from listening to hundreds of thousands of scientists worldwide.



Over the last 25 years, businesses have entrusted their laboratory data to Waters™ Empower Chromatography Data System. Whether on-premise or cloud deployed, Empower is the true gold standard for CDS, defining the standards for laboratories across the globe.

Elevate your quality. Elevate your business. Elevate your lab.

Empower is the first CDS to supply your complete regulatory tool set for compliance and has been the trusted partner in compliance ever since.

Elevate your quality

COMPLIANCE WITH REGULATIONS AND QUALITY REQUIREMENTS

Having the Electronic Record (i.e., 21 CFR Part 11, Annex 11, ISO 17025, PIC/S, WHO) capabilities and compliant electronic signatures you need for your quality is elevated to an all new level with the data integrity, advanced security, and audit trails in Empower.

- **Technical controls:** Controlled access to your data provides compliance with regulations across any industry and helps you proactively remediate data vulnerabilities.
- **Data vulnerability:** From virtualization to cloud deployment, Empower support is in place to ensure you have system redundancy, archival, and disaster recovery provided at the level you need to rectify any data vulnerability.
- **Methods and impurities:** Leverage Method Validation Manager and the embedded impurity calculations to keep your methods in check and make sure they are performing as intended.
- **Support services:** To ensure your software operates as intended, is validated for intended use, and that your users are trained based on the role without adding extra burden to your organization, leverage our Waters global experts.

INCREASE CONFIDENCE IN YOUR RESULTS

Integration, transcription, and calculation errors mean spending too much of your time having to worry about and verify your data. Embedded intelligence in Empower allows you to get the right answer faster so you can make quality decisions for your organization.

- **Robust peak integration:** Automated and reliable peak integration, with effective detection of poorly resolved or low-level peaks on noisy or sloping baselines with ApexTrack™ allows you to not only process data quickly, but also minimize the need for manual intervention.
- **Embedded and tailored calculations:** Generate highly accurate results by eliminating transcription errors associated with needed calculations – no external spreadsheets or complicated macros required.

SIMPLIFY YOUR AUDIT PREPARATION AND ENHANCE RESPONSE TIME DURING AUDITS

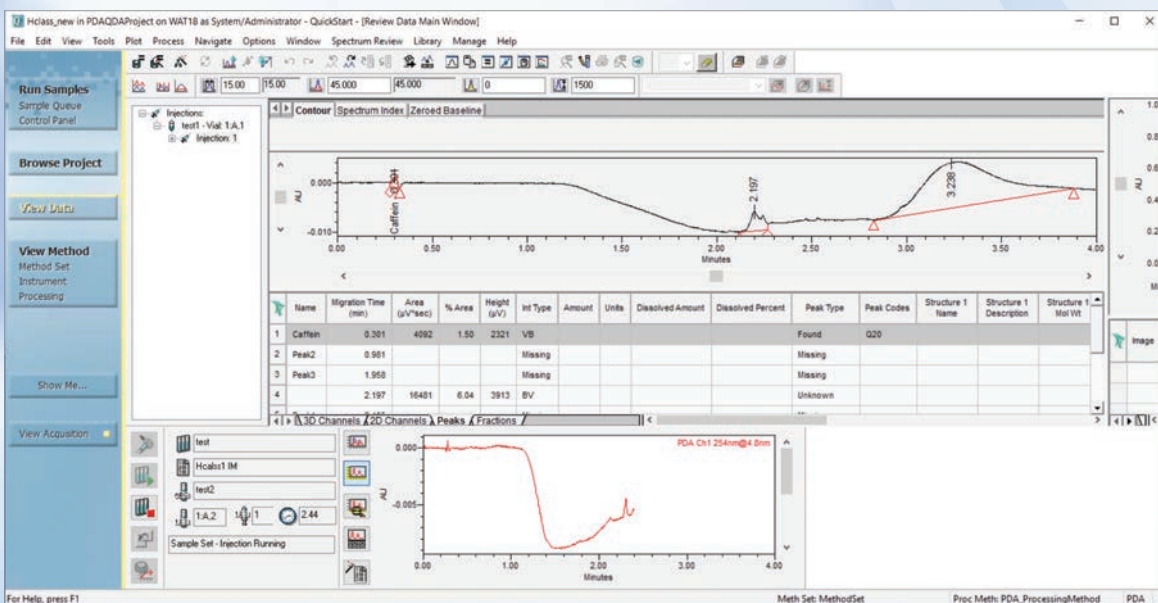
Reduce the time and effort required to confirm data traceability so you have the complete picture of your data with Empower's ability to link everything you need to know about how a result has been generated.

- **Complete method and result history:** Embedded Audit Trails automatically provide a complete history of all entries and changes made to your data, including date and time stamps and who made the change for every single result generated.
- **View information linked to results:** Quickly identify methods, changes, comments, and raw data linked to results with tools like the Empower Result Audit Viewer.
- **Locate critical information:** Easily find information related to your data with simple search filters at point of need.
- **Leverage information about your data:** Identify, investigate, and mitigate risk associated with training needs, potential method issues, and information about your data workflow with Empower laboratory analytics in order to maintain a constant state of inspection readiness.



Stay updated on-the-go with Empower interfaces for mobile devices.

You don't have to settle for less when it comes to the quality of your data.



Empower's QuickStart user interface is a single-window dashboard that streamlines all of the steps in your workflow.

Empower is the first global CDS deployed in the cloud and designed to grow with your business.

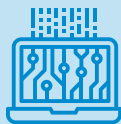
VERSATILITY

Maximize your investment with Empower's ability to adapt to the depth and breadth of your laboratory, IT, quality, and business needs.



HARMONIZE YOUR LAB

Expansive multi-vendor instrument control and data support is critical to your laboratory operations so you can leverage all of the embedded and automated benefits of Empower.



DIVERSE INFRASTRUCTURE

Meet your IT and infrastructure needs with the on-premise, virtual, and cloud options in Empower.



SCALABLE TO YOU

Protect your investment with a right sized CDS for your organization that can grow and adapt to the latest technologies, whether it is a single system, workgroup, enterprise, or global scale enterprise.



MONITOR YOUR METRICS

Proactively maximize your resources and ROI to make informed decisions about your business with single page visibility of key metrics for your entire Empower environment.



DATA PROTECTION AND AVAILABILITY

Protect your data so it is durable over its lifetime with the intentional security provided via Empower.

- **Data migration:** Empower ensures that your data is always available as you migrate forward to new software versions so you don't have to keep legacy versions to access your data.
- **Infrastructure support:** Secure your most valuable asset with system redundancy, archival, business continuity, and disaster recovery provided at the level you need with Empower.
- **Protect intellectual property:** Protect your research and the validity of your data with the trustworthy and reliable records that are secured by data integrity safeguards.



DEPLOYMENT AND SUPPORT

Optimize your environment without disrupting it by leveraging the world's leading experts in enterprise CDS deployment, validation, training, and consulting from Waters.

- **Reduce costs:** Leverage cloud deployment to harmonize and reduce SOPs, reduce servers, and streamline your support.
- **Faster deployment:** Achieve simpler deployment using tools like remote and silent push installs and leveraging virtualization/application delivery products.
- **Minimize disruptions and risk:** Ensure your software operates as intended, is validated for intended use, and your users are expertly trained for their role.
- **Optimize your organization:** Leverage training and consultation experts to reduce your time-to-value and maximize your ROI.



700+ INSTRUMENTS SUPPORTED, 16 BRANDS, AND GROWING...

From Waters most innovative chromatography systems and technologies, including Mass Spec, to Agilent Technologies, Beckman Coulter, CTC Analytics, DANI Instruments, Hitachi High-Technologies, PerkinElmer, Protein Simple, Shimadzu, Thermo Scientific/Dionex, and more!



**Your innovations
do not stay static –
neither should
your CDS.**

Elevate your lab with a CDS built to simplify the way you work.



USABILITY

Harmonize your tasks within Empower to simplify the way you work and spend less time clicking.

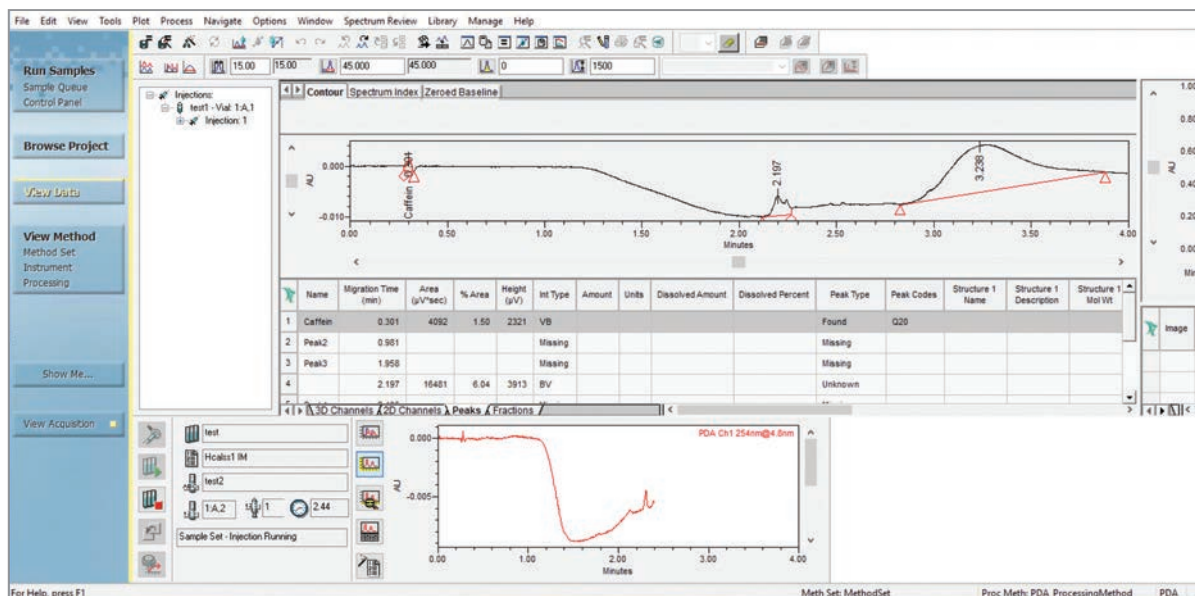
- **Simplified and configurable interfaces:** Select an interface based on your needs, including a single page QuickStart interface, to easily access the right tools for your laboratory workflow.
- **Wizards:** Single-click wizards guide you through all routine elements from acquisition to processing so you can quickly get your work started and finished.
- **Smooth and undisturbed workflow:** Leverage embedded and automatic functionality in Empower and its full suite of capabilities so you don't have to move data between applications, interrupt workflows to move data to spreadsheets or other software packages, and wait for checking before you can proceed with meeting your deadlines.



INCREASE EFFICIENCY

Reduce workflow bottlenecks and increase throughput by leveraging Empower to maximize your productivity and improve how you collect, process, review, and manage data.

- **Easier access to information:** Find the right information at the point of need with a simple click to use inherent sorting capabilities and search filters.
- **Improve communications:** Always have access to the most recent methods, data, and calculations, as well as their history, for better method and data sharing.
- **Identify bottlenecks:** Leverage analytics to analyze usage and workflow patterns to pinpoint how efficiency can be optimized.
- **Increase the speed of answers:** Leverage the intelligence of automated features in Empower to perform review by exception so you can get to your next step faster.

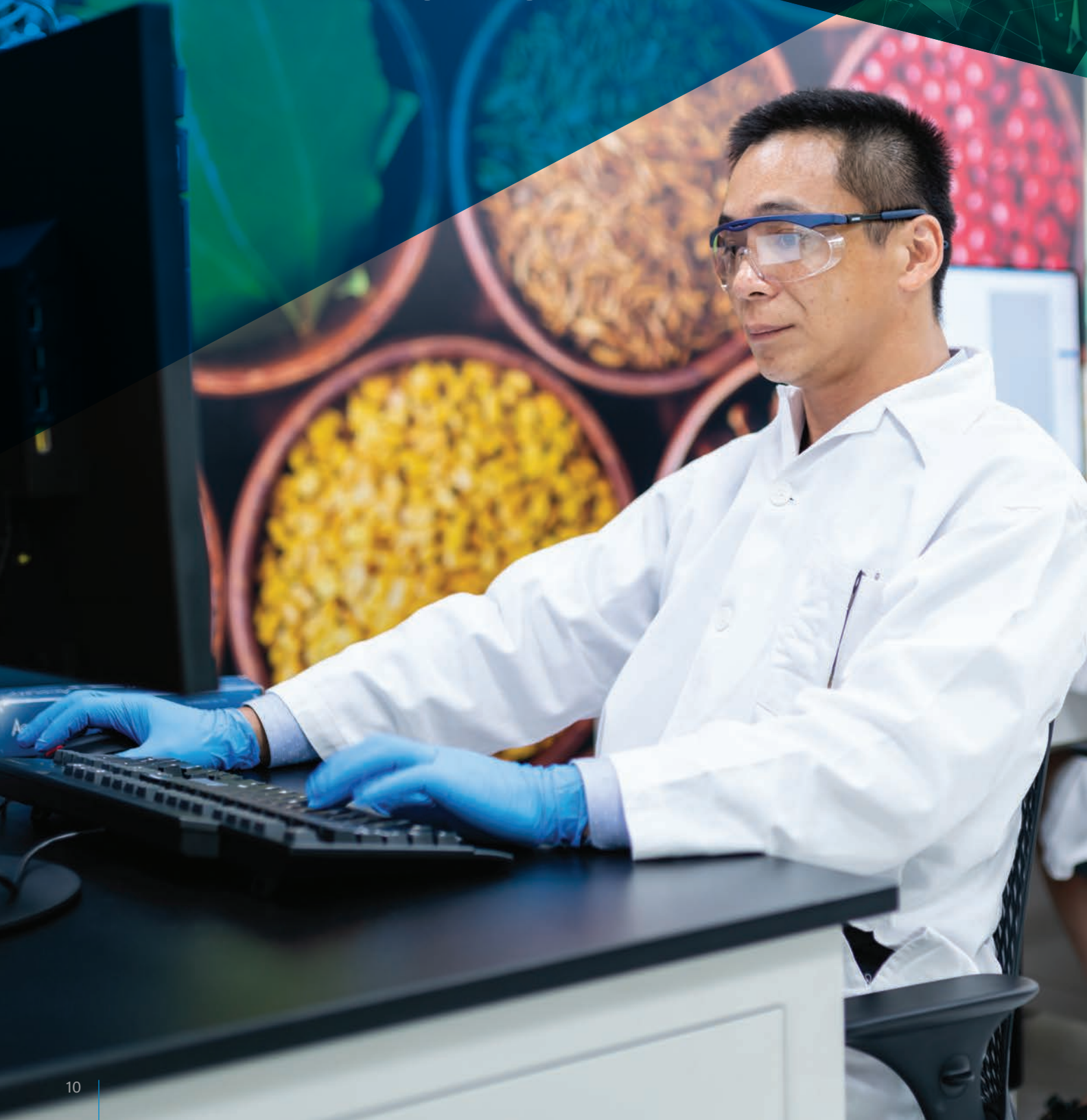


As an example of the breadth of technology that Empower offers, the software can control MS instruments and acquire and process MS data. Spectral information from multiple detection modes can be viewed simultaneously. This enables scientists to easily perform complex analyses with minimal training, increasing lab productivity.

A woman with dark hair pulled back, wearing black-rimmed glasses and a white lab coat, is looking down at a tablet computer she is holding with both hands. The background is a blurred laboratory setting. A large blue and green diagonal graphic overlay is positioned across the middle of the image, containing the main text.

Empower is designed to reduce waste and variability associated with the chromatographic workflow.

500,000+ users can't be wrong.
Are you ready to speak the
universal language of the lab?





CONTROL COSTS

Reduce waste and variability in your workflow and refine your processes in Empower so you can decrease your project costs and do more with your existing staff.

- **Single application for workflow:** Reduce the costs of supporting multiple applications for your chromatography data with the one software with the full suite of functionality you need to support your lab, from data acquisition to processing, embedded and tailored calculations, tailored reporting, laboratory analytics, data integrity, dissolution, GPC/SEC, CE, system suitability, method validation, and advanced data management.
- **Built-in intelligence:** Trace your data with confidence and manage your data without impacting it by leveraging the embedded relational database included with Empower Personal, Workgroup, or Enterprise. No additional or hidden costs.
- **Time spent not generating results:** Eliminate the need to train on multiple software packages and the time spent searching for traceability back to the original instrument method conditions by leveraging a single software solution.
- **Single application for control:** Minimize the training required by standardizing on software that controls existing HPLC and GC systems.

Elevate your quality.

Elevate your business.

Elevate your lab.

WATERS GLOBAL SERVICES

Delivering world renowned services and support

Waters Service and Support offerings are tailored to optimize your laboratory productivity while addressing your budget realities. Our offerings help maintain system peak performance, minimize down time, address scientific application challenges and support stringent compliance requirements. As your services and support provider, we are committed to the success of your laboratory and business.

Waters quality support and consultative services ensure your success wherever your laboratory is located in the world.



Waters has consecutively earned the ACE Award since 2001 for providing best-in-class technical knowledge, issue resolution, and process support.

For your local sales office, please visit waters.com/contact



Waters Corporation
34 Maple Street
Milford, MA 01757 U.S.A.
T: 1 508 478 2000
F: 1 508 872 1990
waters.com

www.waters.com/empower

Waters
THE SCIENCE OF WHAT'S POSSIBLE.™

Waters, The Science of What's Possible, Empower, and ApexTrack are trademarks of Waters Corporation. All other trademarks are the property of their respective owners.

©2021 Waters Corporation. Produced in the U.S.A. April 2021 720001257EN LM-PDF