



Professional streetlight luminaire for LED light sources.

- Possible illuminance control
- Modern design
- Reliability



Other pictures



Code	Type of optics	Luminaire power [W]	Lumen luminaire [lm]	Efficacy [lm/W]	Colour temperature [K]	CRI/Ra	Operating temperature range [°C]
130222.7L782.681.002	O92	59,5	9300	156	4000	>70	* max +50
130222.7L102.991.003	O28	80	11200	140	4000	>70	* max +50

Technical data

Mounting

on pillar $\varnothing 60/40$ mm, on pillar $\varnothing 76$ mm - modification .829, on outriggers $\varnothing 60/40$ mm, on outriggers $\varnothing 76$ mm - modification .829

Body colour

gray

Optimum operating temperature

25°C

RAL

7035

Body

high pressure die-cast aluminum

Lateral Surface Wind Exposed

0.039 m²

Electrical data

Power supply efficiency

≤93%

Power

220-240V 50/60Hz (permissible range 198-242 V)

Includes light source

yes

Type of equipment

DALI

Optical data

Way of lighting

direct

Type of optic

O28, O92

Diffuser

tempered glass

Colour temperature [K]

4000

CRI/Ra

>70

MacAdam's steps

5

ULOR / DLOR

0% / 100%

Photobiological risk group

RG1

General data

Additional information Tilt adjustment: -15° to +15° (every 5°), CRI/Ra >70, Tool-free access to the power supply, ZHAGA**, Corrosion protection, NTC, Power cable 2x1.5 mm² - 1.5m, 10kV surge protection, power supply with dimming function from 100% to 50% in 10% steps, power supply with protection against voltage fluctuations, overvoltage, temperature and overload, THD <8%, internal marking of the luminaire (manufacturer's name, model number, year of manufacture, rated voltage, rated frequency, luminaire power, colour temperature)

Other remarks

the pole and boom are not part of the luminaire

Lifetime LED L90

100 000 h

Warranty

10 years

* Lower temperature range: -40°C to -20°C, depending on the type of power supply used (consultation with the LUG Technical Preparation of Production Branch is required).

** Pictures and dimensions of the standard luminaire (does not include the ZHAGA socket).

Changing the power supply model* does not affect the luminous flux behaviour tolerance (+/-10%) and luminaire power consumption +/-5% (*While maintaining the same current settings) In order to apply the luminaire in an aggressive environment, for example with an increased concentration of sulfur, salt or other aggressive substances, a consultation with the LUG Technical Preparation of Production Branch is required.

Luminous flux tolerance +/- 10%.

Power tolerance +/- 5%.

Lighting beam, light intensity distribution and light efficiency were examined in accordance with the EN ISO 17025:2005 norm for EN13032 norm series and the LM-79 norm.

General Warranty Terms available on our website www.luglightfactory.com

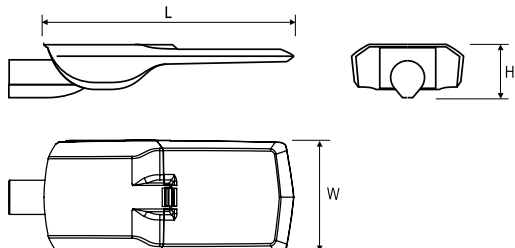
Detailed information on luminous fluxes and powers for individual indexes are indicated on the product data sheet.

The parameters in the data sheet are given for Ta=25°C.

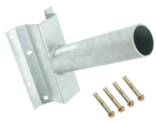
The operating temperature ranges apply only to luminaires used in the outdoor environment.

Colour temperature tolerance +/- 5%.

Dimensions

Dimensions** [mm] LxWxH	Pallet quantity	Quantity in package	Net weight [kg]	
550x250x100	50	1	6.8	

Accessories



- 150173.00906
 - 150170.00818
- Wall bracket \varnothing 60mm



- 150175.01107
 - 150172.01097
- Side louvers for URBINO LED luminaires



- 150175.01106
 - 150172.01096
- Rear-side louvers for URBINO LED luminaires

Light beam curves

