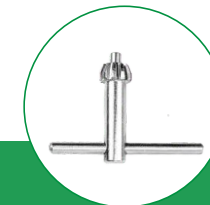




**WUHU RUIJIN MEDICAL INSTRUMENT  
& DEVICE CO.,LTD**

Address/Tel/Fax: No.33, EastWanchun Road, Wuhu Economic  
& Technology Development Zone, Wuhu Anhui China;  
Tel: 86-553-2672511 Fax: 86-553-2672510  
Website: [www.whruijin.com](http://www.whruijin.com)



## ***Electric saw drill - RJ-MP (NM-500) Improved multifunctional electric saw drill***

***This multi-function system is a multi-purpose system that can be used in a wide range of applications. The bone drill , the canulated drill , the cranial drill, the cranial mill, the sternum saw, the acetabular reaming, the oscillating saw, reciprocating saw,tplo saw and the k-wire can be quickly replaced. It is the best choice for convenient and quick surgery.***

# Standard configuration >>

Description	Unit	Qty
Handpiece	pc	1
Charger	pc	1
Battery	pc	2
Battery aseptic transfer ring	pc	2
All these drill saw attachments can be partial chosen or full purchased.		
Universal Bone drill	pc	1
Bone drill AO synthes	pc	1
Canulate drill (drill chuck fixed)	pc	1
Canualte drill Stryker	pc	1
Canualte drill AO	pc	1
Acetabular reamer drill Styker	pc	1
Acetabular reamer drill AO	pc	1
Oscillating saw with two saw blades	pc	1
Cranial mill with two mill blades	pc	1
Cranial drill with one drill burr	pc	1
Sternum saw with two saw blades	pc	1
Reciprocating saw with two saw blades	pc	1
TPLO saw	pc	1
Kirshchner wire drill Φ0.8-Φ1.8	pc	1
Kirshchner wire drill Φ1.5-Φ2.5	pc	1
Kirshchner wire drill Φ2.0-Φ3.2	pc	1
Aluminum case for package	pc	1



## >> Feature

- 01 *Ergonomically designed*
- 02 *Imported motor with strong power and stable output*
- 03 *Support component quick change*
- 04 *Ensuring the operational efficiency*

» *Main Technical Data*

Handpiece	Output power	150W
	Temperature rise	≤25℃
Charger	Input voltage	AC110-220V, 50-60Hz
Battery	Voltage	14.4V
	Capacity	1800mAh
	Type	NI-MH battery
	Charging time	Around two hours
Bone drill	0-1025rpm	
Acetabular reamer drill	0-300rpm	
Canulate drill	0-1000rpm	
Kirshchner wire drill	0-1025rpm	
Cranial drill	0-1025rpm	
Cranial mill	0-40000rpm	
Oscillating saw frequency	0-18000cpm	
Sternum saw/ reciprocating saw frequency	0-18000cpm	
TPLO saw	0-18000cpm	
Oscillating saw amplitude	4±0.5°	
TPLO saw amplitude	10±0.5°	
Sternum saw/ reciprocating saw amplitude	3.6±0.25mm	
Saw noise	≤75dB ( A )	
Drill noise	≤65dB ( A )	
Drill radial runout	≤0.1mm	
Drill rated torque	3.5N.m-----10N.m	
Drill impact torque	8N.m-----16N.m	
Kirshchner wire clamping	0.8-1.8/2.0-3.2mm	

» *Product details*



» *Accessories*

*Drill chuck & Key*



*Charger*



*Battery of 14. 4v*



*Aspetic battery transfer rings*



» *Different attachments as below & they are optional according to surgery*

Multiple functions in one, wide range of applications.

Quick replacement of adapters, convenient and speedy.

Suitable for joint, trauma, neurosurgery, and intracardiac surgery; Applicable components consist of canulate drill adapter, K wire adapter, bone drill adapter, acetabular reaming drill adapter, oscillating saw adapter, cranial drill adapter, reciprocating saw adapter, sternum saw adapter, TPLO saw adapter and cranial mill adapter.



**NM5-2001**

**Canulate Drill Adapter**

Item code	Gripping Range	Speed
MPN52001	0.8-7.9mm	0-1000 rpm
MPN52011	0.8-7.9mm	0-1000 rpm
MPN52021	0.8-7.9mm	0-1000 rpm



**NM5-6001**

**K Wire Adapter**

Item code	Gripping Range	Speed
MPN56001	0.8-2.0mm	0-1200rpm
MPN56002	1.5-3.2mm	0-1200rpm



**NM5-1001**

**Bone Drill Adapter**

Item code	Gripping Range	Speed
MPN51001	0.8-7.9mm	0-1200 rpm
MPN51021	/	0-1200 rpm



**NM5-3011**

**Acetabular Reaming Drill Adapter**

Item code	Gripping Range	Speed
MPN53011	1.0-8.1mm	0-300 rpm
MPN53021	1.0-8.1mm	0-300 rpm



**NM5-S011**

**Oscillating Saw Adapter**

Item code	Gripping Range	Speed
MPN5S011	/	0-18000 cpm



**NM5-S091**

**Cranial Mill Adapter**

Item code	Gripping Range	Speed
MPN5S091	/	0-36000 rpm



**NM5-4011**

**Cranial Drill Adapter**

Item code	Gripping Range	Speed
MPN54011	/	0-800 rpm



**NM5-S032**

**Sternum Saw Adapter**

Item code	Gripping Range	Speed
MPN5S032	/	0-14000 cpm



**NM5-S031**

**Reciprocating Saw Adapter**

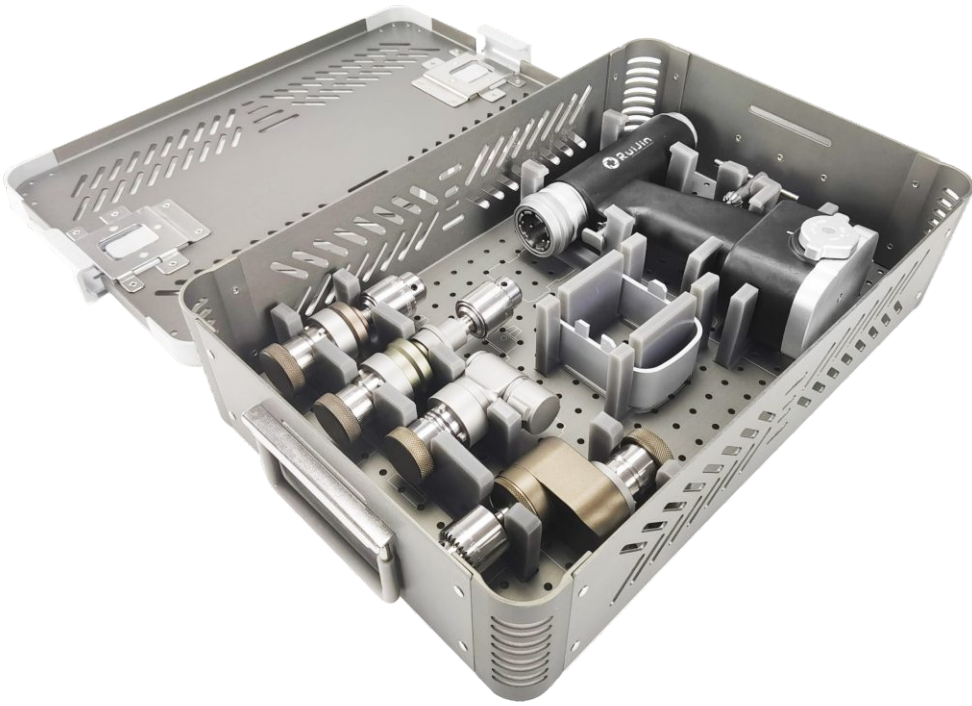
Item code	Gripping Range	Speed
MPN5S031	/	0-14000 cpm



**NM5-S071**

**TPLO Saw Adapter**

Item code	Gripping Range	Speed
MPN5S071	/	0-16000 cpm



**Sterilization case is additional cost.**

» *Application*

*The Multifunctional Drill Saw System is widely used in joints, trauma, neurosurgery, and intracardiac surgery. Ergonomically designed, it is the best choice for operators, and it can be completely controlled under the premise of ensuring the speed to ensure safety. The new imported motor has strong power and stable output. Support component quick change, ensuring the operational efficiency of medical personnel. This is a product not to be missed when you are purchasing Multifunctional Drill Saw System.*

**Aluminum case packing**

