

Specifications

Model		DW-30L1280F	
Technical Data	Cabinet Type	Upright	
	Climate Class	N	
	Cooling Type	Forced air cooling	
	Defrost Mode	Automatic defrost	
	Refrigerant	HC	
	Sound Level (dB(A))	46	
Performance	Cooling Performance (°C)	-30	
	Temp Range (°C)	-10~-30	
Control	Controller	Microprocessor	
	Display	LCD	
Electrical Data	Power Supply (V/Hz)	220~240/50	
	Power (W)	800	
	Electrical Current (A)	4.5	
Dimensions	Capacity (L/Cu.Ft)	1280/45.2	
	Net/Gross Weight(approx)	kg	420/480
		lbs	925/1057
	Interior Dimension(W*D*H)	mm	1320*752*1260
		in	52/29.6/49.6
	Exterior Dimension(W*D*H)	mm	1520*1065*1980
		in	59.8/41.9/77.9
	Packing Dimension(W*D*H)	mm	1570*1080*2130
		in	61.8/42.5/83.8
Alarms	Container Load (20'/40'/40'H)	6/14/14	
	High/Low Temperature	Y	
	Remote Alarm	Y	
	Power Failure	Y	
	Sensor Error	Y	
	Low Battery	Y	
	High Ambient Temperature	Y	
	Door Ajar	Y	
Accessories	Castor	Y	
	Sensor Error	Y	
	Porthole	Y	
	Drawers/Inner Doors	12/-	
	Temperature Recorder	/	
	USB Interface	Y	
	RS485	Y	
Other	Certification	CE	

F suffix - Forced air cooling
Product appearance and specifications are subject to change without notice

Typical Installation and Application

Suitable for sample storage within blood banks, hospitals, disease control centres, research institutes, electronic, chemical and other industries, cryopreservation of plasma, biologics and other products, also suitable for cold tests for components and materials.

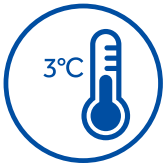


DW-30L818BP

Key Features



Energy saving with variable frequency inverter technology
Optimized refrigeration system with a high efficiency inverter compressor to reduce energy consumption.



Excellent temperature uniformity in a large storage space
Features built-in evaporator, large storage space and adjustable shelf, providing faster temperature pulldown and a better temperature uniformity of set point ±3°C.



Low noise
Sound reduction design lowers the sound level to 37dB(A) at 220V/50Hz.



Environment Friendly
1)HC refrigeration system contains zero chlorine and fluorine,which is better for the environment.
2)Urethane foam insulation complies with European ROHS regulation.

Product Advantages

Ergonomic Design: document holding compartment for storing size A4 paper and pens.

Optional USB port allows users to download temperature data saved up to 10 years for compliance and auditing purposes.

Microprocessor temperature control: LED displays cabinet temperature with 0.1°C resolution, ambient temperature, and input voltage.

Double door seals for better insulation performance.

Pressure equalization port for easy door opening.

Ergonomic handle design: easy access to storage space, built in lock and padlock features.

Casters and leveling legs for ease of maneuvering and positioning.

Powder coating galvanized interior with large round corner design, corrosion resistance and easy to clean.

Inner door design reduces loss of cold air to improve energy efficiency and stable temperature.

Adjustable shelves made with stainless steel or coated steel.

DW-30L818BP**-30°C Biomedical Freezer****Microprocessor Control System**

- Microprocessor-based temperature control.
- Large LED displays cabinet temperature with 0.1 °C resolution with adjustable temperature setting from -10 °C to -30 °C.
- Cabinet temperature, ambient temperature and voltage are shown on the panel.
- Alarm conditions include high and low temperature, sensor error, power failure, low battery, door ajar and high ambient.
- Alarm modes are audible and flashing lights. Remote alarm terminals are available.
- Battery supports display and alarm system for forty eight hours after power outage.
- Optional features are IoT module, USB port, temperature recorder and NFC swipe card functions.

Insulation

- 70 mm thick insulation.
- Inner doors for better thermal efficiency.

Porthole

- Two standard portholes allow ease of temperature testing.

Security Lock

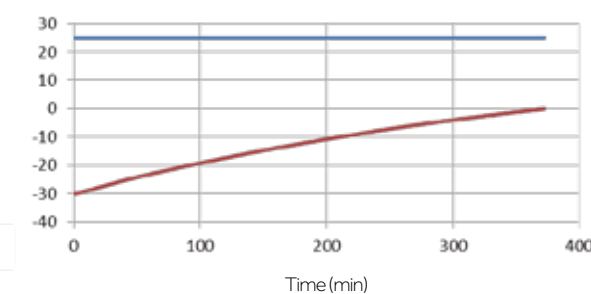
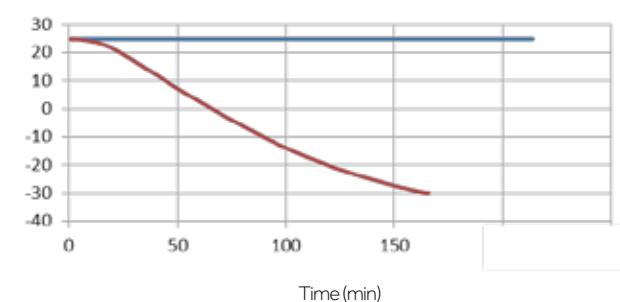
- Lock is standard. Magnetic lock is optional for added protection and security

Temperature Recorder

- Optional temperature recorder for temperature recording and compliance.

**Typical Performance Characteristics at 25°C ambient**

— Ambient Temp.
— Center Temp.



Product Advantages

Easy to clean and corrosion resistant

Electric zinc plate powder sprayed internal liner and large round corner design and coated steel plate exterior design ensure reliable corrosion prevention which is easy to clean.

Ergonomic handle design: easy access to storage space, built in lock and padlock features.

4 multi-directional casters and 2 lockable feet make it easy to move, level and lock in place.



DW-30L818

Microcomputer electronic thermostat, LCD digital display of inside temperature, with 0.1 °C display accuracy.



Flexible internal storage

Equipped with 5 plastic coated steel wire shelves with optional stainless steel shelves, which are adjustable to meet the different requirements of users.

Double seal design provides better insulation and saves energy.



Inner doors prevent rapid loss of cold air, saving energy and reducing temperature fluctuations.

Specifications

	Model		DW-30L818	DW-30L818BP
Technical Data	Cabinet Type		Upright	Upright
	Climate Class		N	N
	Cooling Type		Direct Cooling	Direct Cooling
	Defrost Mode		Manual	Manual
	Refrigerant		HC	HC
	Sound Level (dB(A))		44	37 (220V/50Hz)
Performance	Cooling Performance (°C)		-30	-30
	Temp Range (°C)		-10~-30	-10~-30
Control	Controller		Microprocessor	Microprocessor
	Display		LCD	LED
Electrical Data	Power Supply (V/Hz)		220-240/50	100-230/50/60
	Power (W)		380	680
	Electrical Current (A)		2.8	7.7
Dimensions	Capacity (L/Cu.Ft)		818/28.8	818/28.8
	Net/Gross Weight (approx)	kg	205/235	210/240
		lbs	451.9/518.1	463.0/529.1
	Interior Dimension (W*D*H)	mm	750*755*1460	750*755*1460
		in	29.5*29.7*57.5	29.5/29.7/57.5
	Exterior Dimension (W*D*H)	mm	988*951*1980	988*951*1980
		in	38.9/37.4/78.0	38.9/37.4/78.0
	Packing Dimension (W*D*H)	mm	1040*1060*2150	1040*1060*2150
		in	40.9/41.7/84.6	40.9/41.7/84.6
Container Load (20'/40'/40'H)		10/22/22	10/22/22	
Alarms	High/Low Temperature		Y	Y
	Remote Alarm		Y	Y
	Power Failure		Y	Y
	Sensor Error		Y	Y
	Low Battery		N	Y
	High Ambient Temperature		Y	Y
	Door Ajar		Y	Y
Accessories	Castor		Y	Y
	Sensor Error		Y	Y
	Porthole		Y	Y
	Drawers/Inner Doors		-/3	-/3
	Temperature Recorder		Optional	Optional
	USB Interface		Optional	Optional
	RS485 Port		Optional	Y
Other	Certification		CE	CE

BP suffix - Variable frequency inverter compressor
Product appearance and specifications are subject to change without notice