

RMK-150 Auto Ref/keratometer

Feature:



System of Vision Measuring

It can measure the keratometry and refractometry at the same time data

System of Optical measuring

The basic curvature measurement of parameters of contact lens completion of vision test data

System of Fixation

Automatic colorful vision system making your optical measuring comfortable

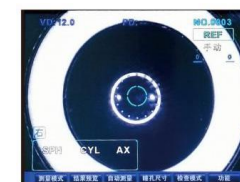
Technical Data

Measurement mode	Cornea/ refractometry measurement mode	keratometry/refractometry
	Mode of keratometry	refractometry
Refractometry	Refractometry measurement mode	keratometry
	Mode of CLBC	Substrate curvature of contact lens
	Vertex Distance	0, 10, 12, 13.5, 15mm
	Spherical degree	-25.00~+22.00D(VD=12mm, 0.12or0.25D)
	Cylinder degree	0.00~+/-10.00D(0.12 or 0.25D)
	Axial	1~180 ° (step 1°)
	Cylinder Symbol	-, +, +/-
	pupil distance	10~85 mm
	Minimum pupil diameter	∅ 2.0 mm
	Measuring time	0.07sec
Keratometry	Radius of curvature	5.0 ~10. 2 mm
	Corneal refractometry	33.00 ~ 67.50D
	Corneal astigmatism	0.00 ~ -15.00D (0.05/0.12/0.25D)
	Corneal diameter	2.0 ~ 14.0 mm
	printer	Thermal printer
Others	Saving Settings	3, 5, 10 Minutes
	Monitors	
	Power	AC 100 ~ 240V,50/60HZ/90W
	Size / Weight	248(W) × 476(D) × 475(H) mm /21 kg
	Jaw panel	Max 55 mm
Data Output	Rs-232 interface , Video output	

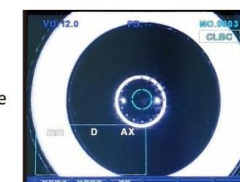
RMK-700 Auto Ref/keratometer

Feature:

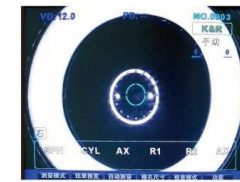
- With function of REF, KER, K&R, CLBC, SIZE, RMK-700 can meet all of your measurement requirement.
- Convenient trying on mode, patient can experience the measurement result on the machine. Omitting all the trouble of trying again and again.
- Z-map measurement mode is much more vivid than traditional cornea measuring. By the result of outputting to PC, the patient can understand all the details of his vision.



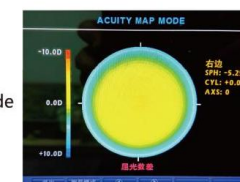
REF Mode



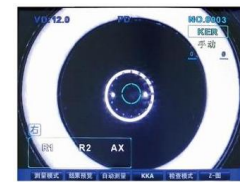
CLBC Mode



K&R Mode



MAP Mode



KER Mode



Concise menu interface



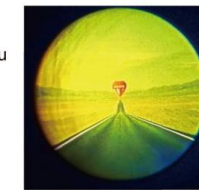
SIZE Mode



One step locking switch of body head



Electric lifting chin rest



Clear foggy interface make the measuring possess more comfortable



Convenient and sample lifting forehead rest



Perfect optical head and foggy system are much more accurate



Integrated printer is more convenient and faster

Technical Data

Vertex Distance	0.0 mm , 12.00 mm, 13.5 mm, 15.00mm
Spherical degree	-20.00D ~ +20.00D, (VD=12mm, step : 0.12 D/0.25D)
DCylinder degree	0.00 D~+ 10.00 D (step : 0.12D/0.25D)
Axis	1°~ 180 (step 1°)
Cylinder symbol	-, +, MIX
Minimum pupil diameter	2.0mm
Radius of curvature	6.5 mm ~ 94 mm (step : 0.02mm)
Printer	Thermal printer
Display	6.4 inch TFT display

