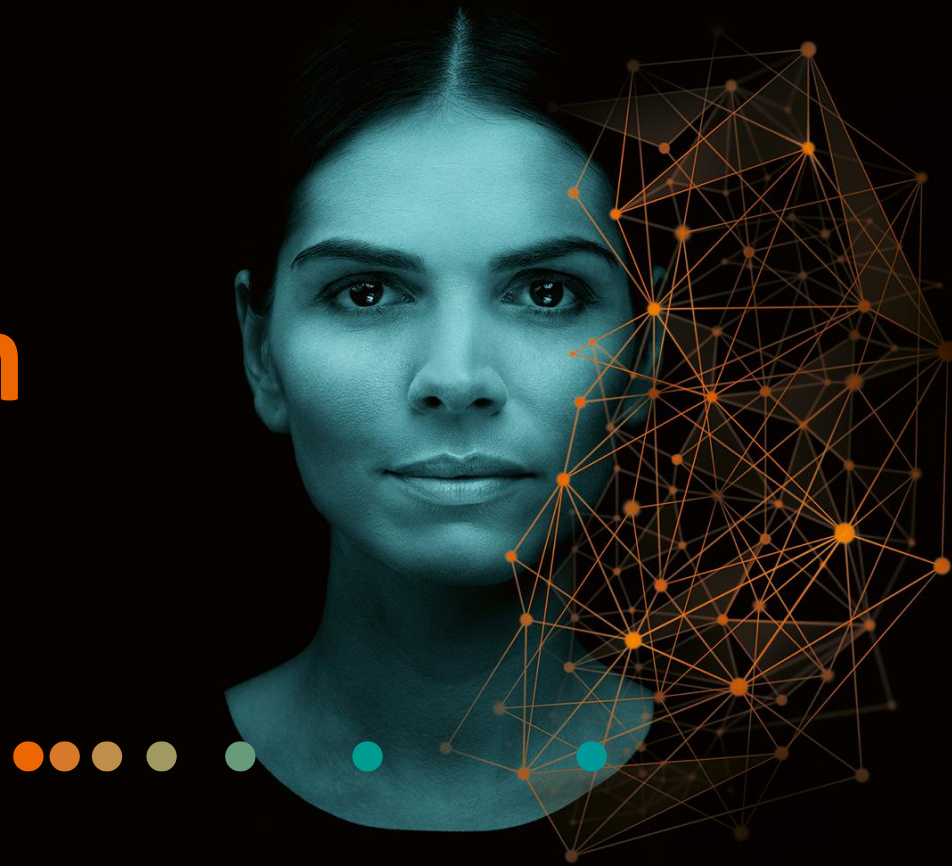


ACUSON Juniper ultrasound system

Workflow protocols
Software release 3.0 (VC10)



Objectives

- Define and summarize benefits of protocols
- Create and modify a protocol
- Use protocols



What is a protocol?

Automated major imaging mode changes

Automated Text and Body Marker labeling

Automated measurements

**Guided and automated clinical
workflow, based on a
predefined checklist.**

Why use protocols?

Benefits of protocols

Guides new
users

Standardizes
exams across
users

Reduction of
keystrokes

Flexible when
needed

Objectives

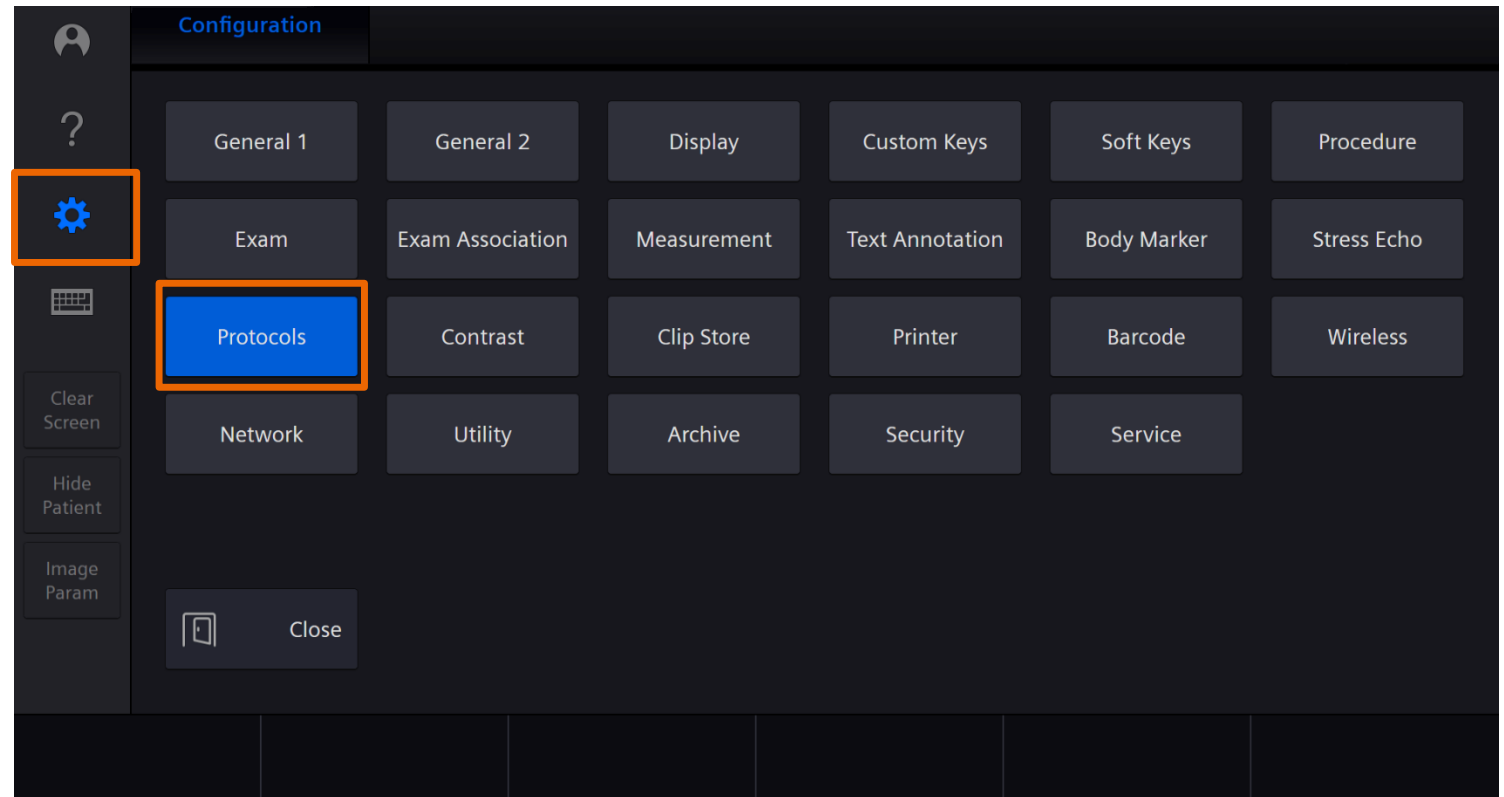
- Define and summarize benefits of protocols
- **Create and modify a protocol**
- Use protocols



Creating a protocol

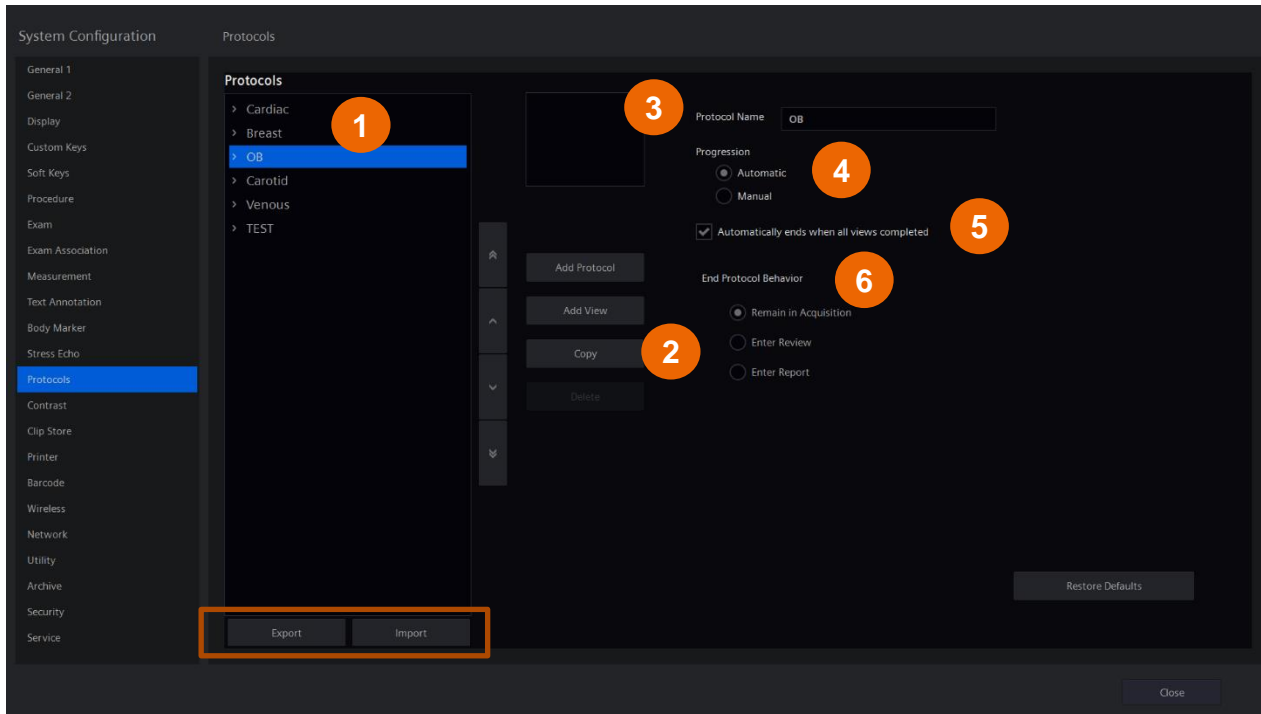
Configuration menu

- Select **System Configuration**
- Select **Protocols**



Creating a protocol

Copy a factory default



Factory defaults may be used as a template for creating a new protocol.

For example:

1. Select **OB**
2. Select **Copy**
3. Change Protocol Name
4. Select **Automatic** or **Manual** progression
5. If desired, select to automatically end when all views are completed
6. Select **End Protocol Behavior**



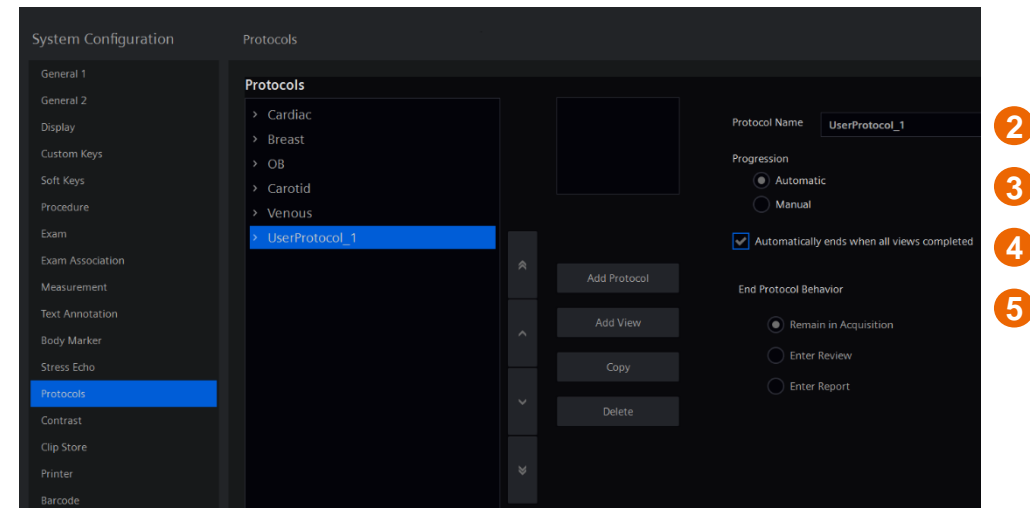
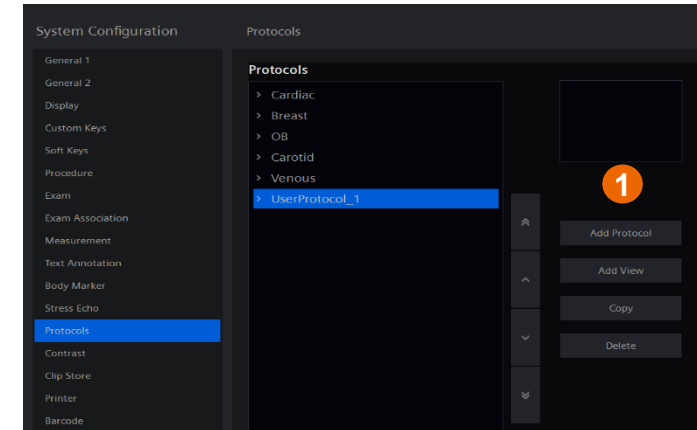
Import or export protocols using a USB storage device.

Creating a protocol

Adding a new protocol

If no factory default exists for an exam, a new protocol can be created:

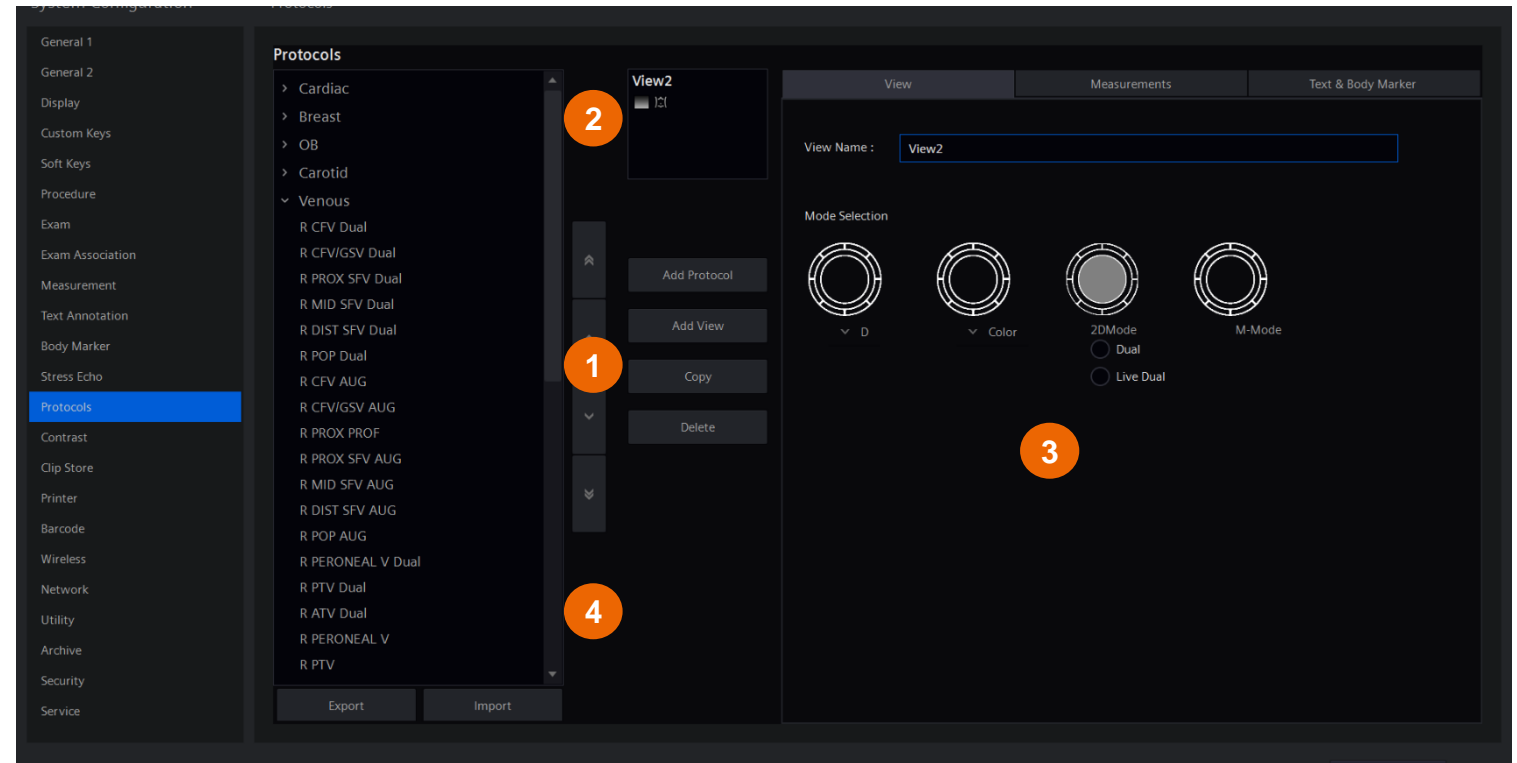
1. Select **Add Protocol**, a new UserProtocol_1 will be added to the screen
2. Change the Protocol Name
3. Select **Progression** type
4. Select whether to **Automatically** end when all views completed
5. Select **End Protocol Behavior**



Creating a protocol

Adding a view

1. Select **Add View**
2. Type **View Name**
3. Select imaging mode (multiple modes may be selected)
4. Change order of views by moving them up/down



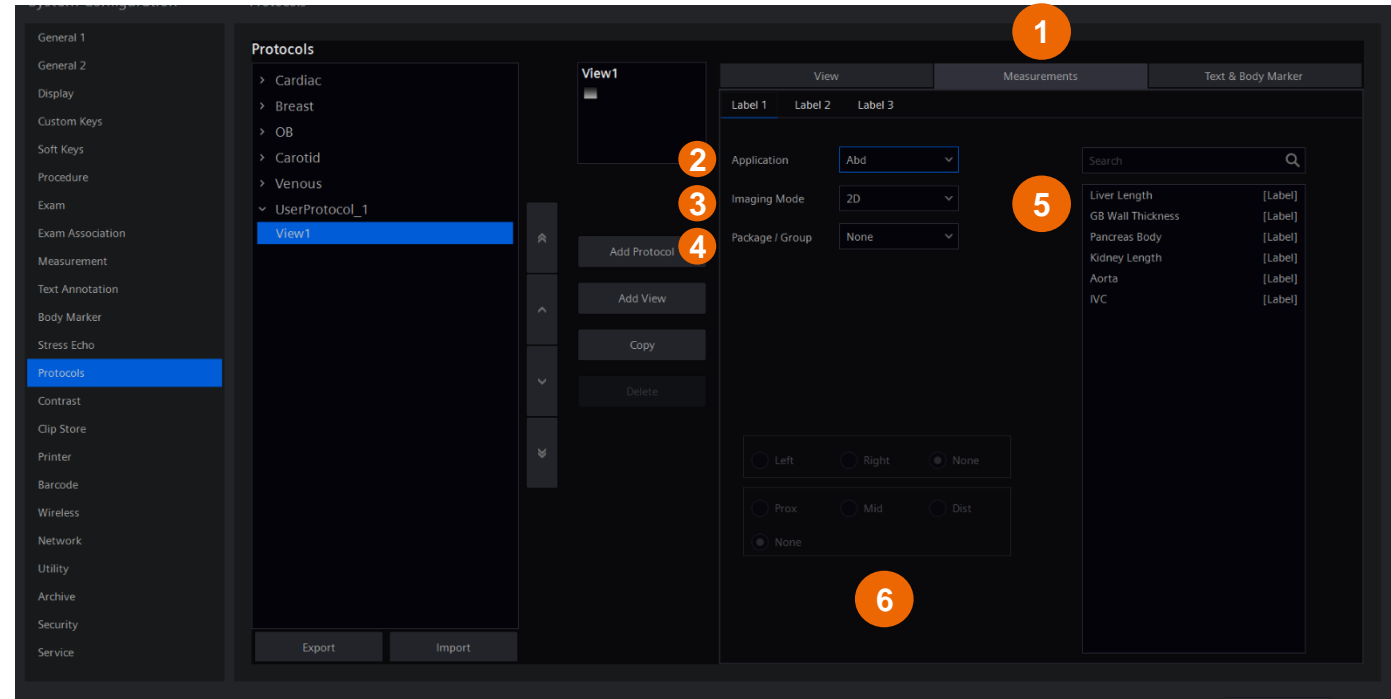
Creating a protocol

Adding a 2D measurement

1. Select **Measurements** tab
2. Select **Application**
3. Select **Imaging Mode: 2D**
4. Select **Package/Group**
5. Select desired measurement
6. Select laterality if appropriate



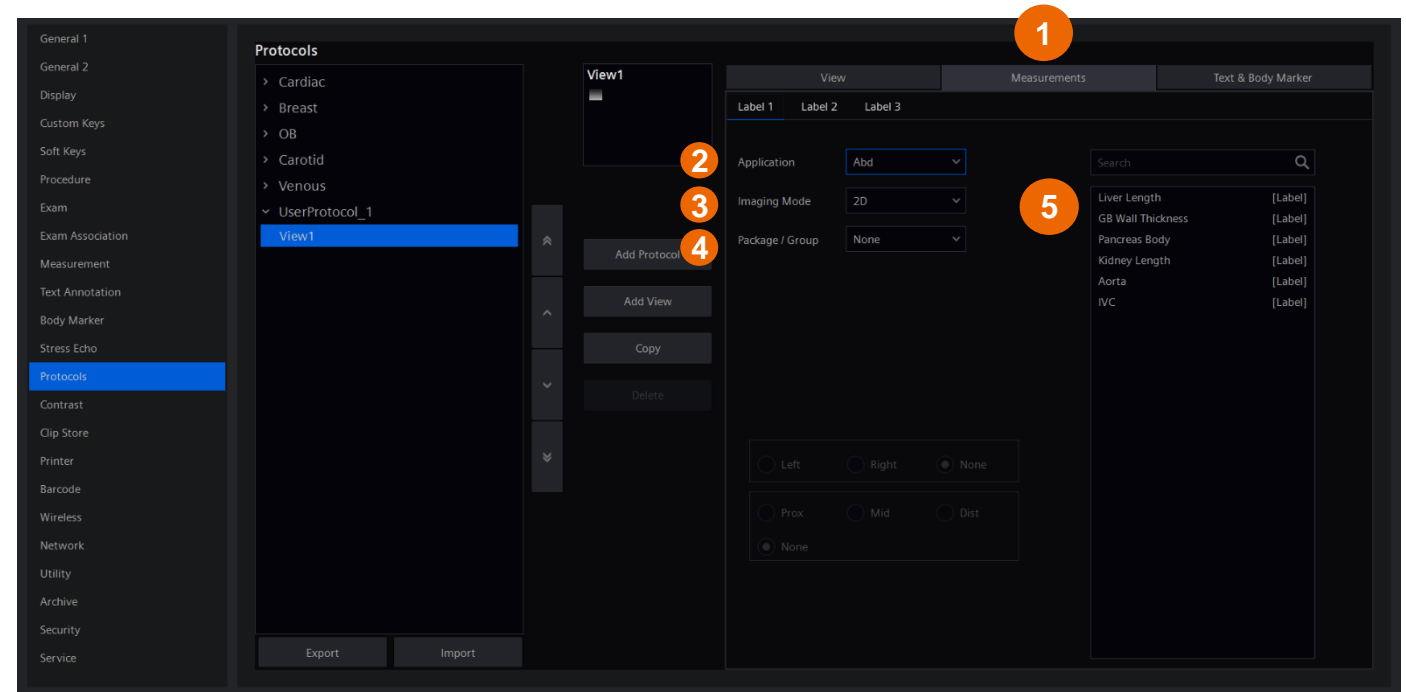
Workflow protocols acceleration package is compatible with adult and pediatric cardiac protocols.



Creating a protocol

Adding a Doppler measurement

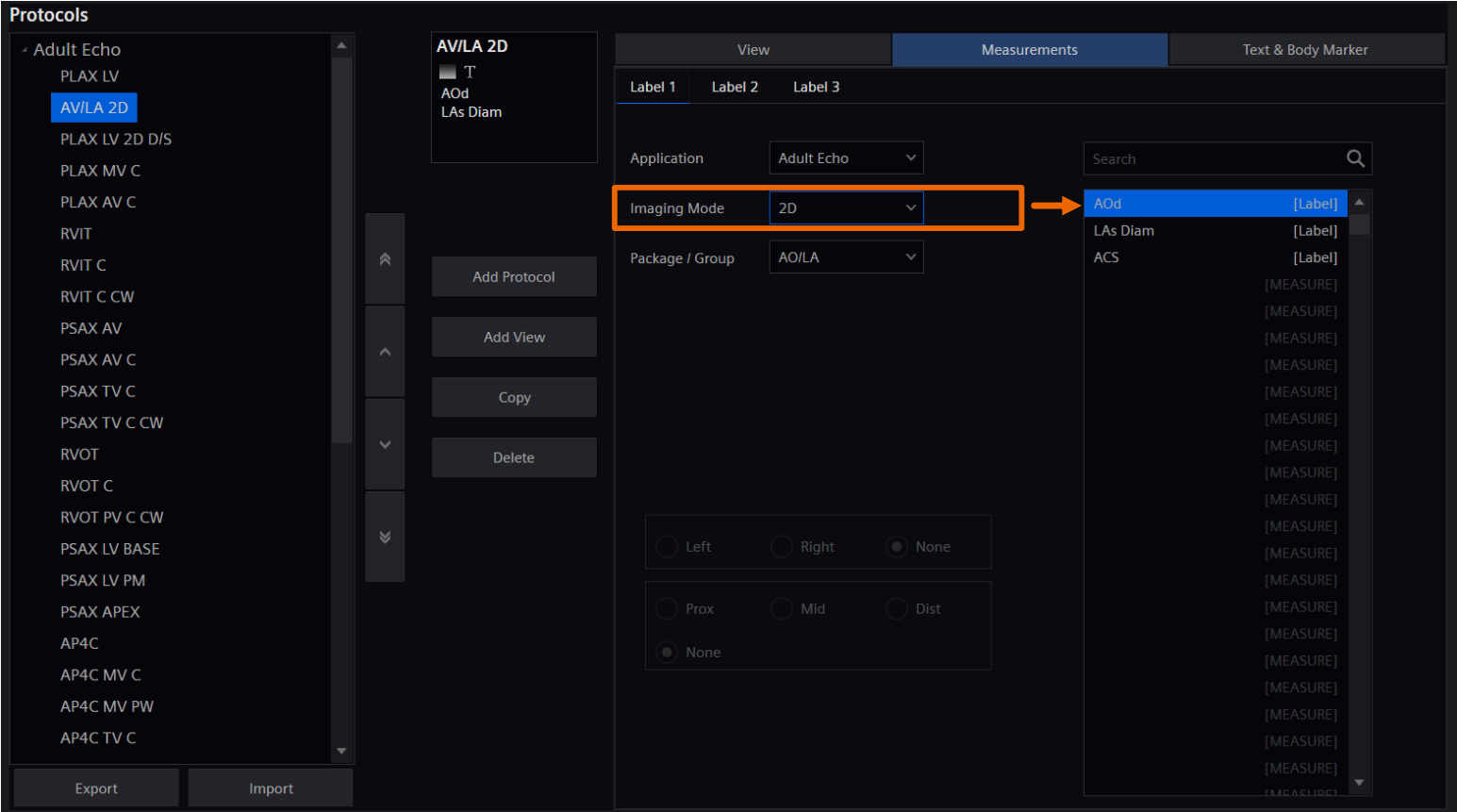
1. Select **Label 2** under the Measurements tab
2. Select **Application**
3. Select **Imaging Mode: Doppler**
4. Select **Package/Group**
5. Select desired measurement



Creating a protocol

Adding a measurement

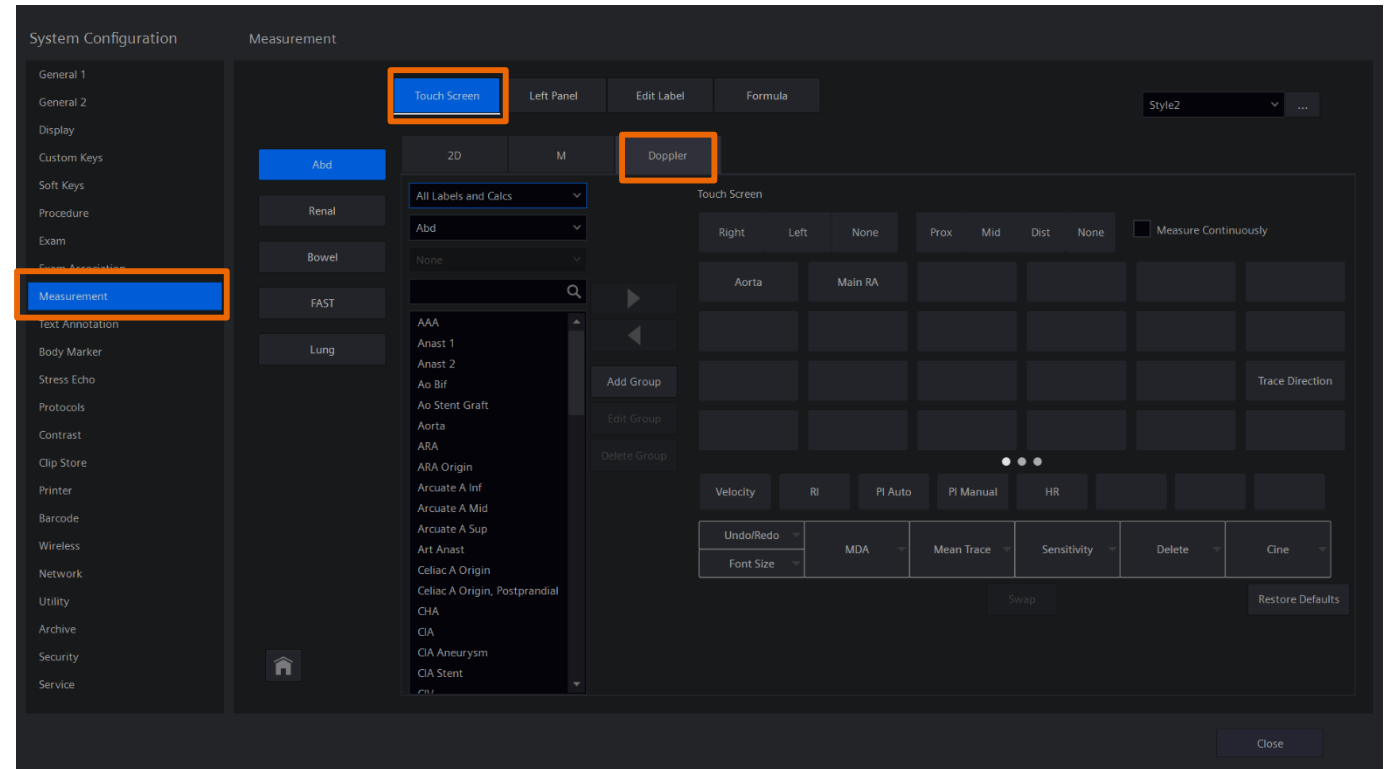
Please note: When selecting the measurement mode, only labels that are already displayed on the touch screen will be available.



Creating a protocol

Adding a Measurement

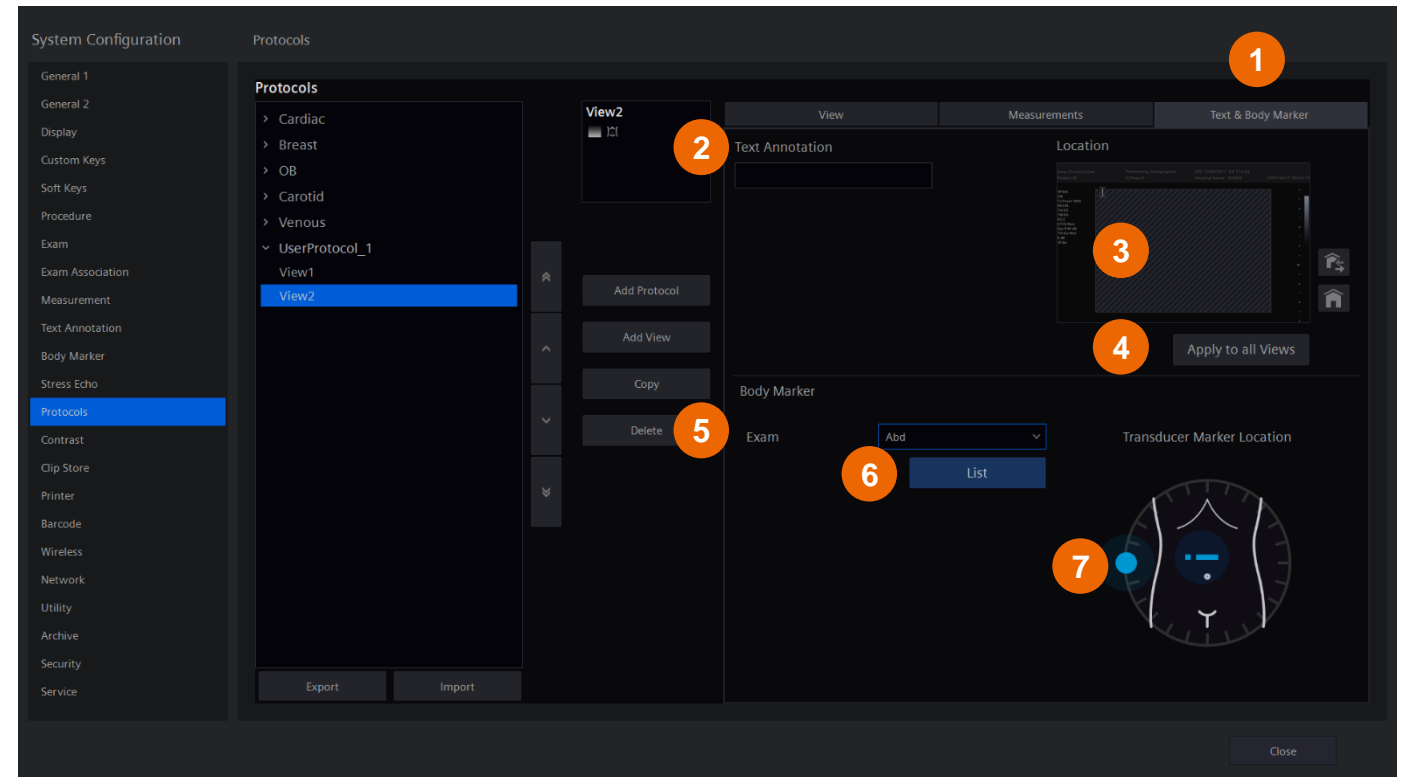
- To add more label options, select the **Measurement** tab in system configuration
- On the touch screen, select the desired mode tab (2D, M-mode or Doppler) and add labels
- Return to the **Touch Screen** tab; the labels will now appear in the master drop down list



Creating a protocol

Adding Text & Body Marker

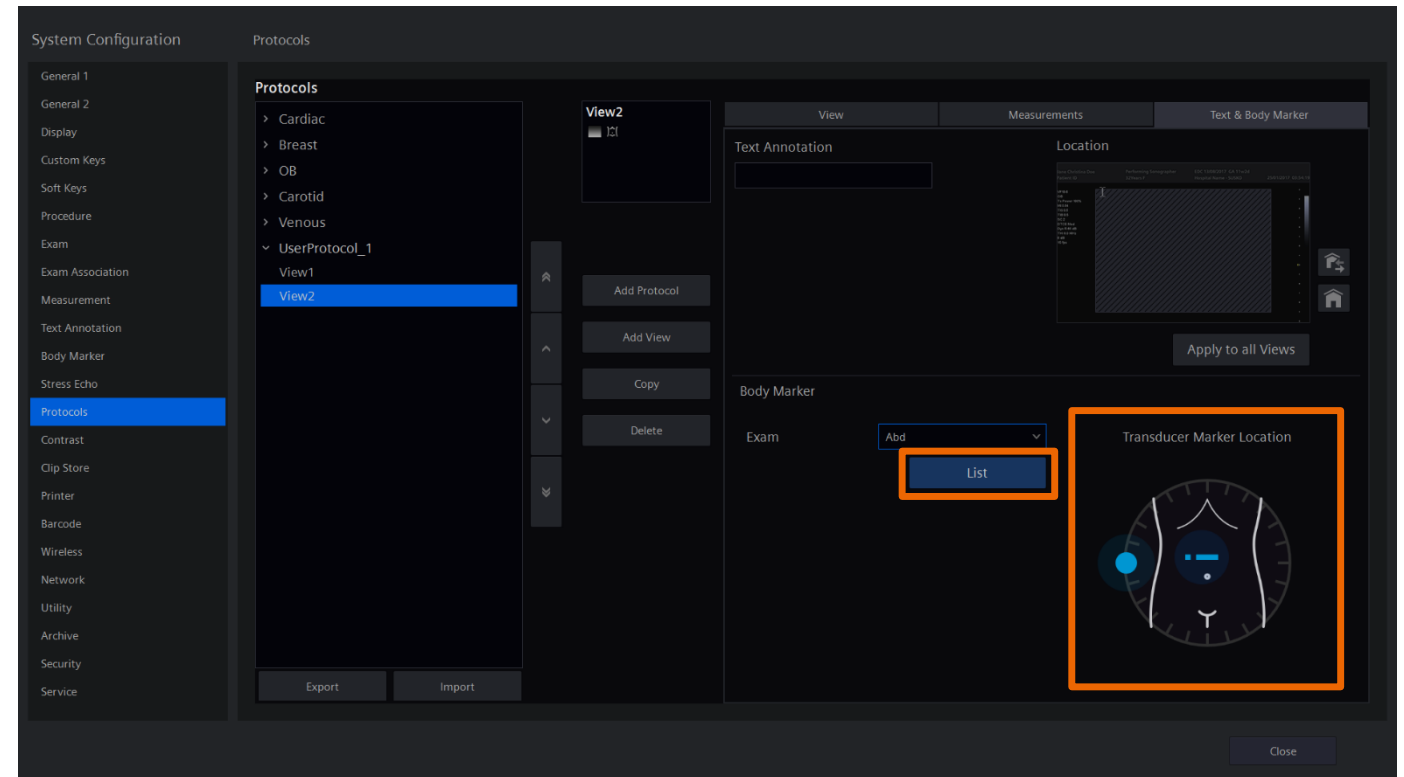
1. Select **Text & Body Marker** tab
2. Enter **Text Annotation**
3. Click inside the screen to customize text location
4. Select **Apply to all Views**
5. Select from Body Marker > Exam drop-down menu
6. Select **List** for available body markers
7. Place transducer marker



Creating a protocol

Adding Text & Body Marker

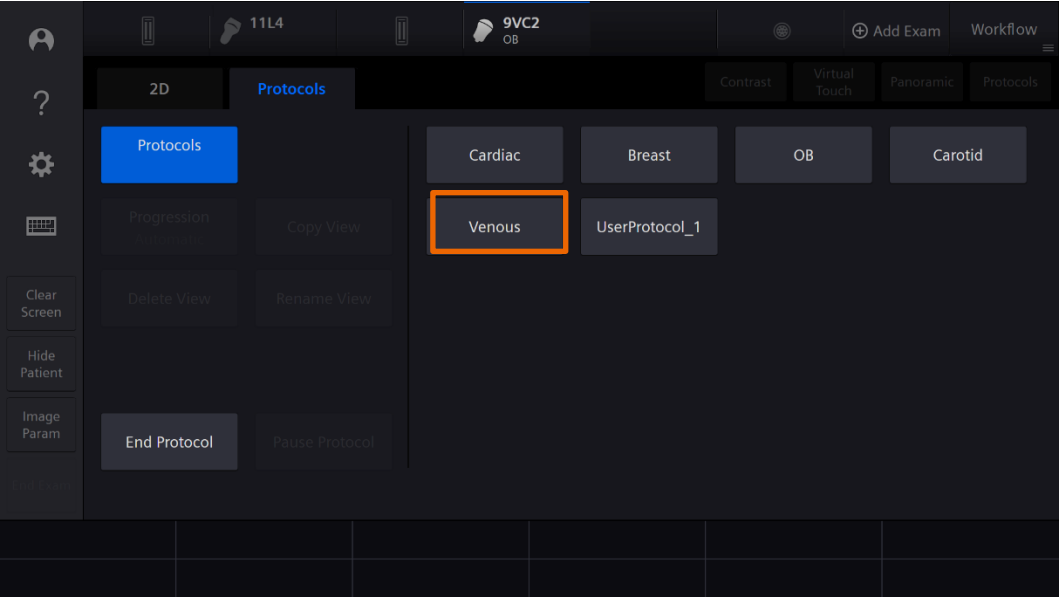
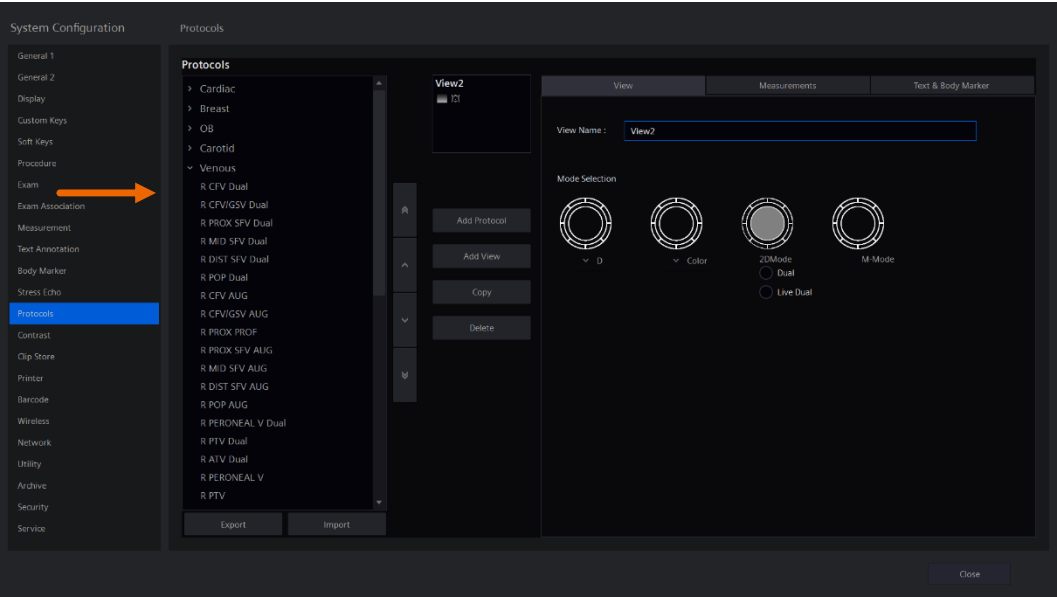
- The selected body marker will appear in the bottom right corner of screen
- Modify Transducer Marker Location by activating the blue circle with the pointer and adjusting
- Select **Body Markers**, then **List** to display all available body markers



Creating a protocol

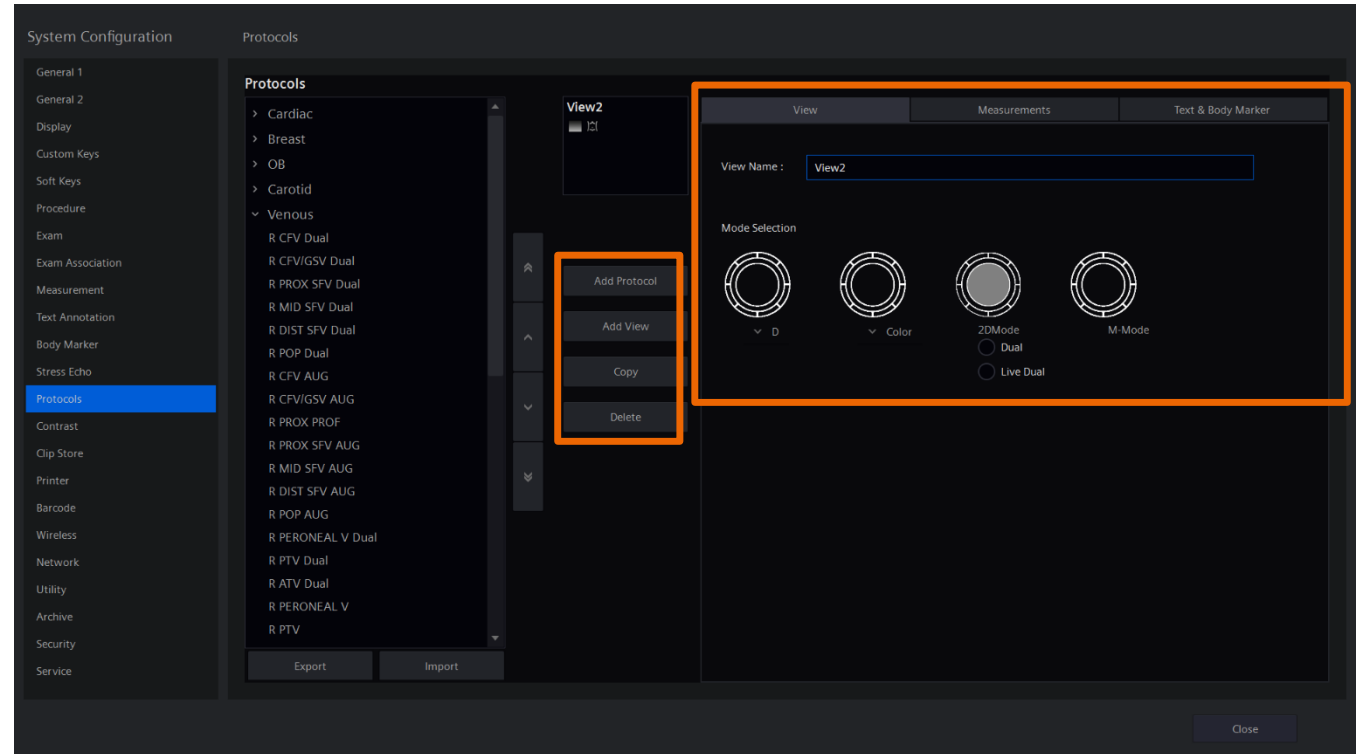
Once completed, the protocol and associated views can be visualized by selecting the ▶ sign next to the protocol name.

The new protocol will be displayed on the touch screen along with any other existing protocols.



Modifying a protocol

- Add View – to add a new view in the protocol (use arrows to change position of view)
- Copy – to create an exact copy of a view
- Delete to remove a view
- Rename a view by editing View Name
- Add measurements, text, and body markers to a view



Objectives

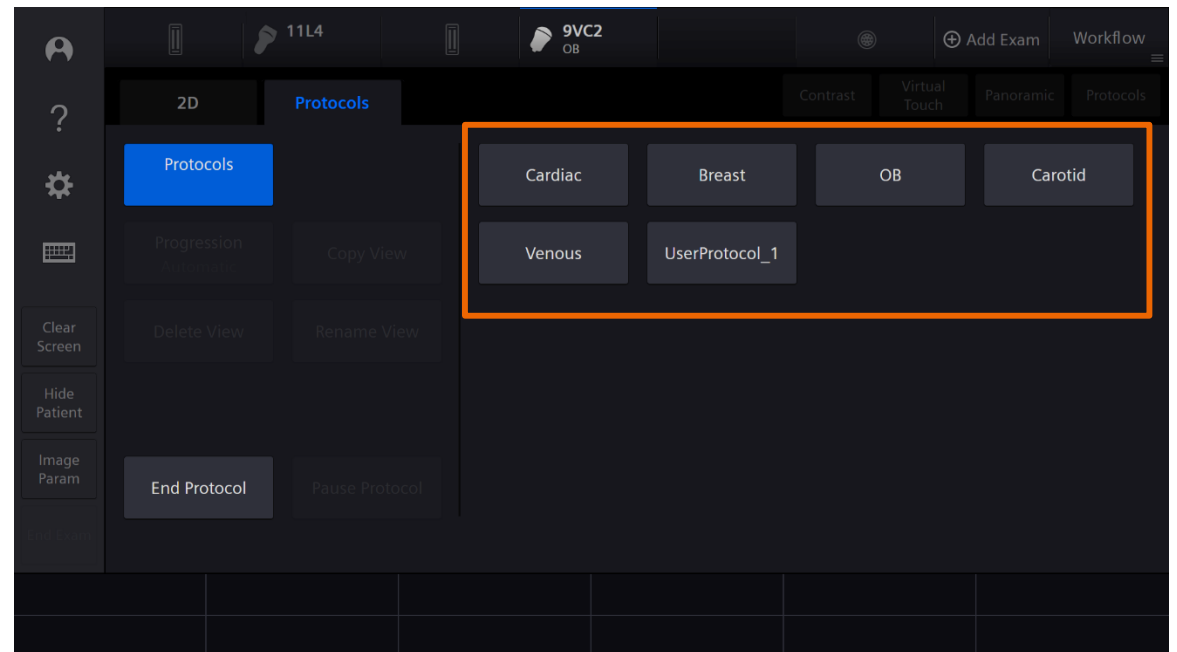
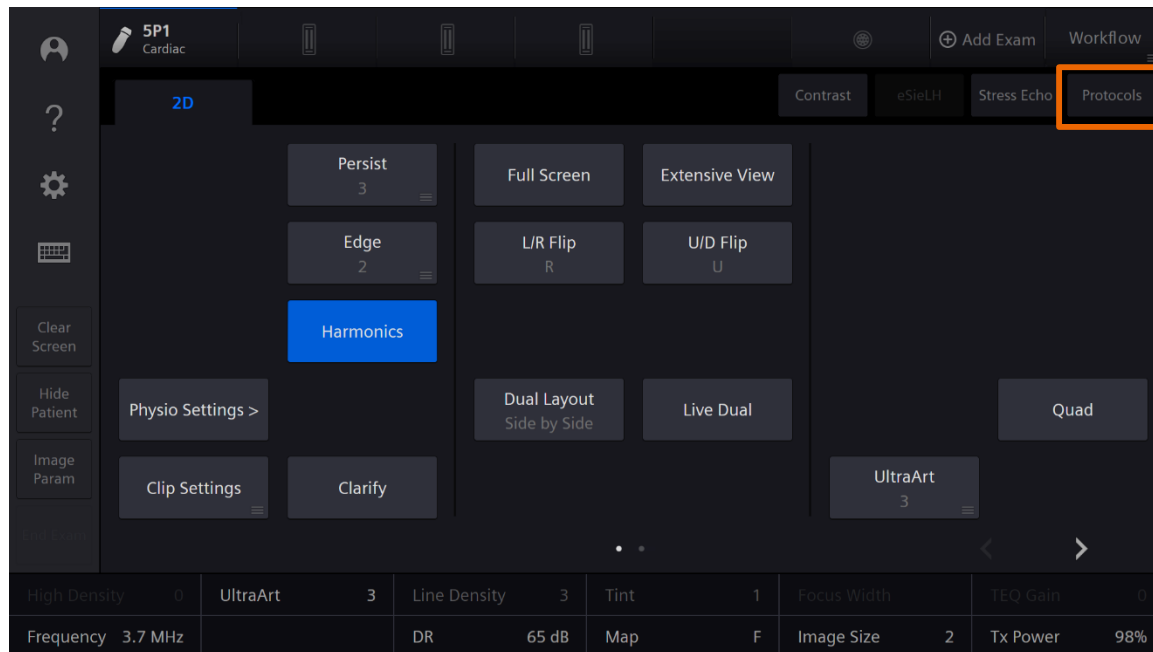
- Define and summarize benefits of protocols
- Create and modify a protocol
- **Use protocols**



Using protocols

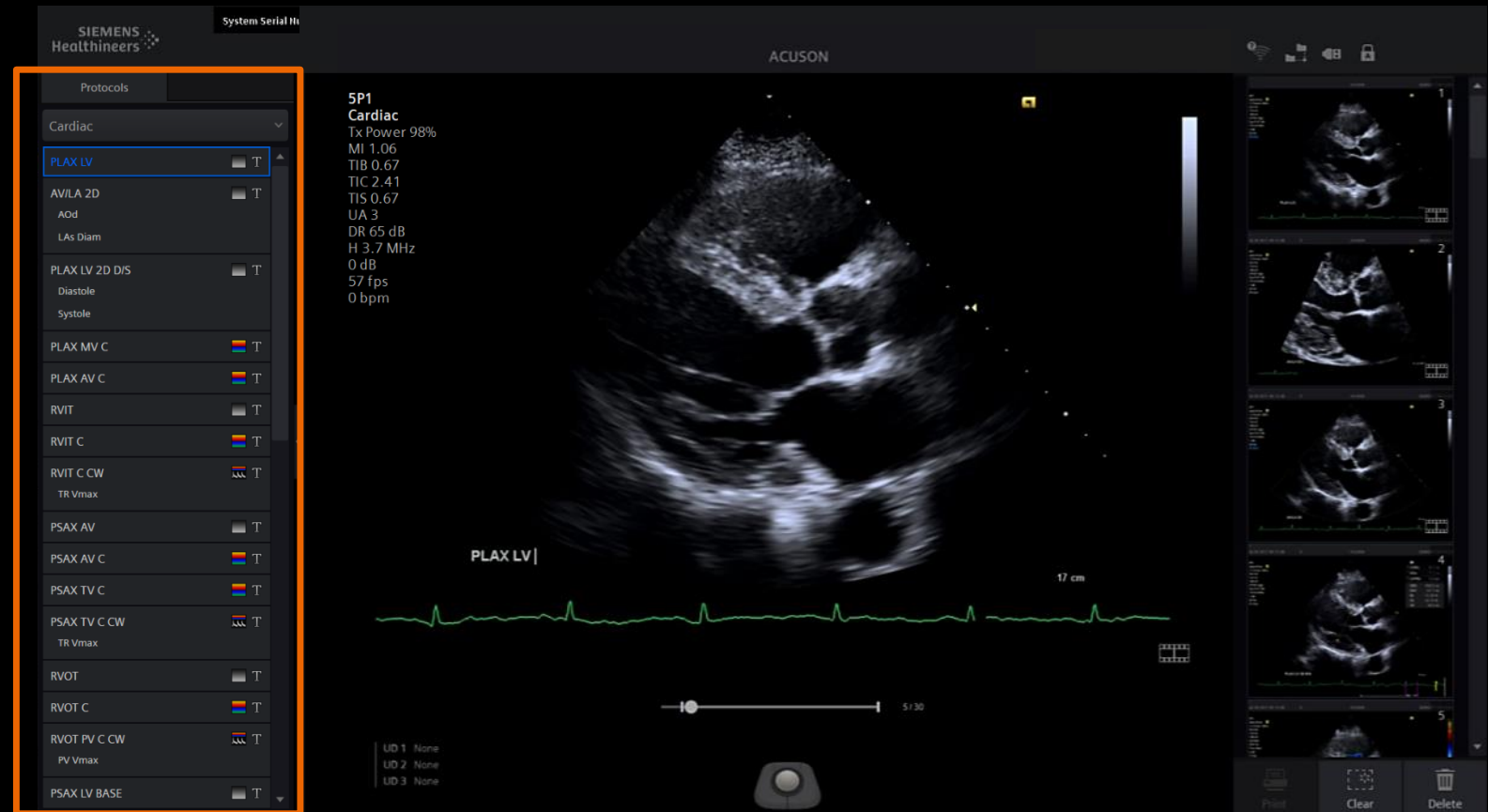
Workflow

- Select tab to the right of touch screen
- Choose from list of available protocols



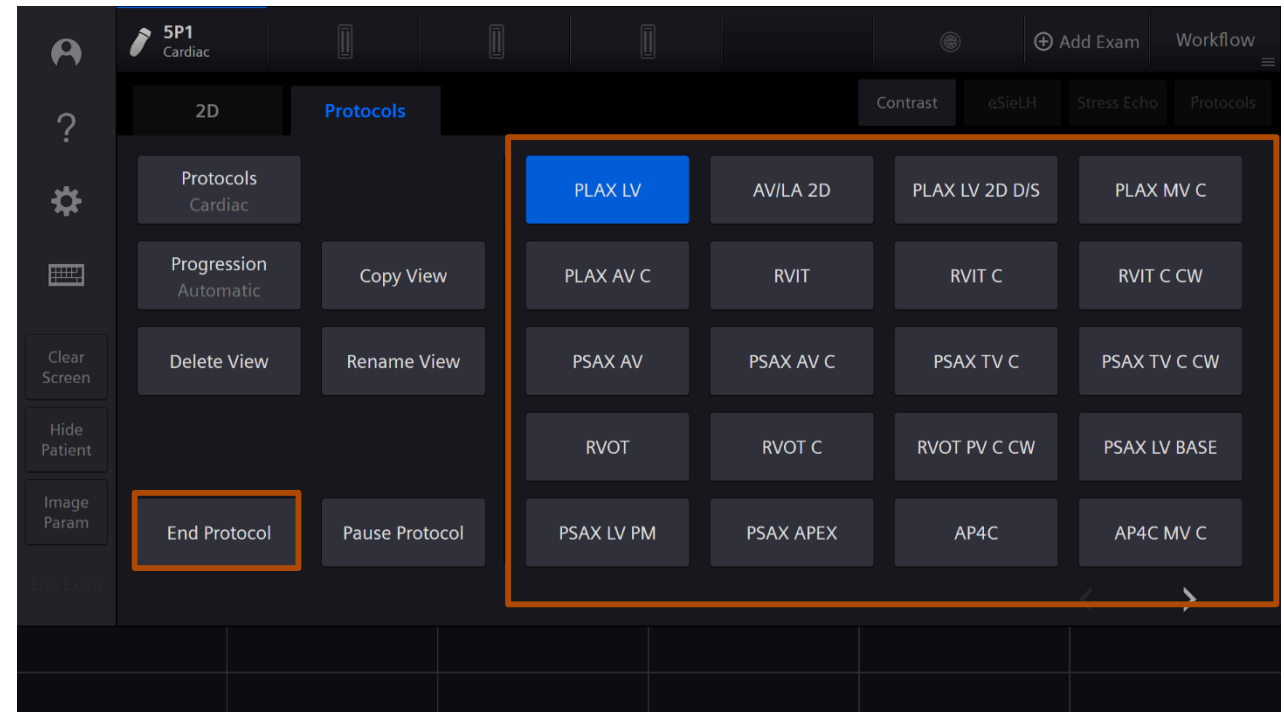
Using protocols Workflow

- Protocol views are listed on the left side of the monitor as well as on the touch screen
- The current view is highlighted in blue



Using protocols Workflow

- Store a clip or frozen image to advance to the next view
- To skip a view, select the next view from the monitor or touch screen, or rotate the Select key
- At the end of a protocol, the system will return to any skipped views
- If the user chooses not to obtain the skipped views, select **End Protocol**



Using protocols

Workflow

- Protocol views correspond with icons indicating the major imaging modes (2D, Color, Doppler, M-mode)
- Icons also indicate whether the view includes a measurement, text annotations and/or body marker
- Measurements within views are initiated by selecting Caliper on the control panel



Using protocols Workflow

- To obtain images not contained in the protocol, select **Pause Protocol** at any time on the touch screen or press the **Set** key
- Select **Resume Protocol** on the touch screen or press the **Set** key again to resume the protocol
- Additional functions include Copy View, Delete View, Rename View
- Select **End Protocol** to end the protocol



Summary

- Define and summarize benefits of protocols
- Create and modify a protocol
- Use protocols



Thank you for your enthusiasm!

Questions?

Trademarks and disclaimers

The products/features mentioned in this document may not be commercially available in all countries. Due to regulatory reasons, their future availability cannot be guaranteed. Please contact your local Siemens Healthineers organization for further details. The reproduction, transmission, or distribution of this training or its contents is not permitted without express written authority. Offenders will be liable for damages.

All trademarks are the property of their respective owners.
Siemens Healthineers owns the rights to all images.

At Siemens Healthineers, we pioneer breakthroughs in healthcare. For everyone. Everywhere. Sustainably. As a leader in medical technology, we want to advance a world in which breakthroughs in healthcare create new possibilities with a minimal impact on our planet. By consistently bringing innovations to the market, we enable healthcare professionals to innovate personalized care, achieve operational excellence, and transform the system of care.

Our portfolio, spanning in vitro and in vivo diagnostics to image-guided therapy and cancer care, is crucial for clinical decision-making and treatment pathways. With the unique combination of our strengths in patient twinning¹, precision therapy, as well as digital, data, and artificial intelligence (AI), we are well positioned to take on the greatest challenges in healthcare. We will continue to build on these strengths to help overcome the world's most threatening diseases, enable efficient operations, and expand access to care.

We are a team of more than 73,000 Healthineers in over 70 countries, passionately pushing the boundaries of what is possible in healthcare to help improve the lives of people around the world.

Siemens Healthineers Headquarters

Siemens Healthineers AG
Siemensstr. 3
91301 Forchheim, Germany
Phone: +49 9191 18-0
siemens-healthineers.com

Manufacturer

Siemens Medical Solutions USA, Inc.
Ultrasound
22010 S.E. 51st Street
Issaquah, WA 98029, USA
Phone: 1-888-826-9702
siemens-healthineers.com/ultrasound



¹ Personalization of diagnosis, therapy selection and monitoring, after care, and managing health.