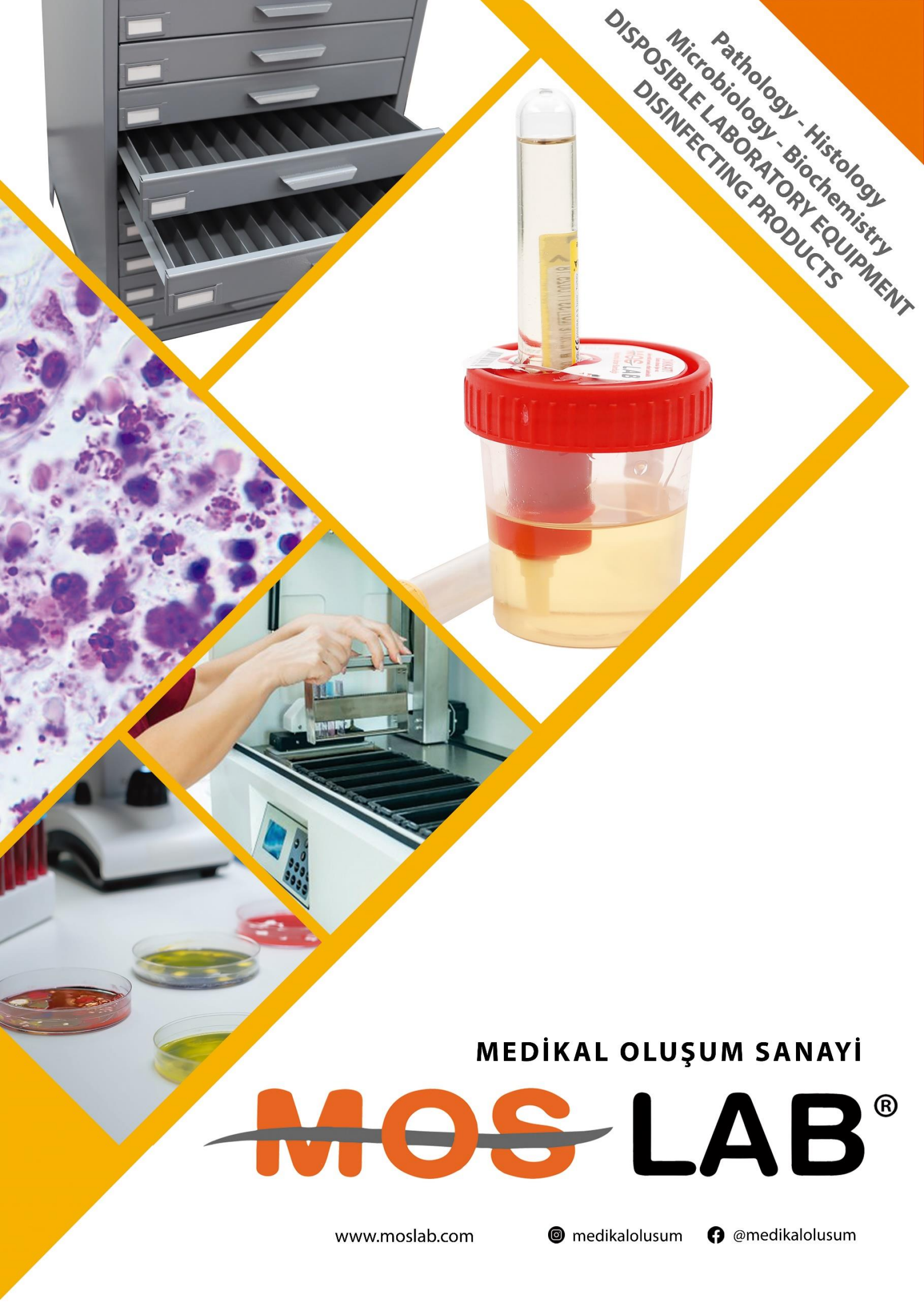


Pathology - Histology
Microbiology - Biochemistry
DISPOSIBLE LABORATORY EQUIPMENT
DISINFECTING PRODUCTS



MEDİKAL OLUŞUM SANAYİ

MOS **LAB**®

www.moslab.com

Instagram icon [medikalolusum](#)

Facebook icon [@medikalolusum](#)

MOSLAB MEDİKAL OLUŞUM SANAYİ VE TİC. LTD. ŞTİ;

With it's experienced team providing services by representing our products alongside international companies products having TS EN and ISO 9001:2015 - ISO 13485:2016 -ISO 22716:2013 GMP documents which are also displays our understanding of the quality.

AS BEING MOSLAB, OUR AIM IS ;

Making our customers meet with their needs and further expectations, alongside considering the international standards and legal regulations, also providing them our high quality products alongside fast shipping all over the world.

Our company is aware of acquiring this aim with embracing the philosophy of "Always develop and convalesce in the system that you have established and in the services that are being provided by you." and ensuring the "Customer - Employee - Beneficiary" content.

AS BEING MOSLAB, OUR PRINCIPLE IS;

Alongside the services that are provided in health sector by our company, increasing the competition in order to be beneficial to society, our economy and making our country to have independence in medical supplies.

Furthermore, during production process frequently updating our quality policy and prioritize work safety are also among our principles.

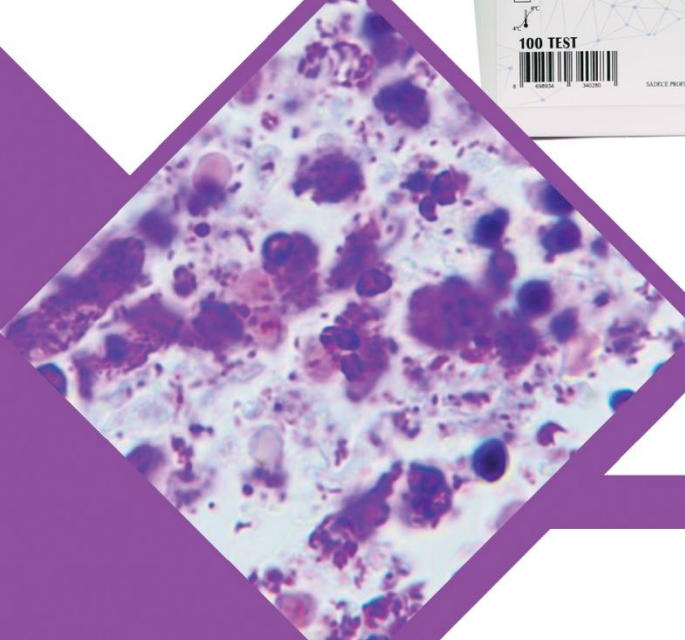
AS BEING MOSLAB, OUR GOAL IS;

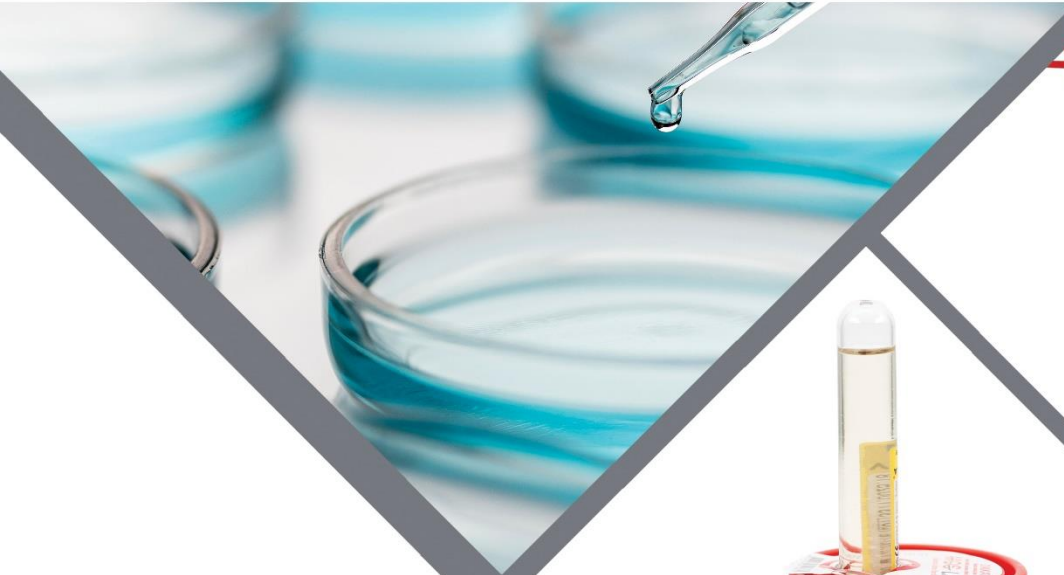
"Providing quality continuity." and "Keeping our beloved customer's satisfaction at the top." As it is for today, also in future the MOSLAB company will guarantee everything we have done and by making no concessions to in our following activities which we had our trustworthy and consistent quality, we will keep providing permanent services.

FROM OUR FOUNDER

As being Medical Formation Industry, we have left behind 24 years in the sector. This is a company, which has born in the lands and contributing to the health sector of our country, since the day we were founded, our goal has been to providing the greatest positive impact for our country to reduce foreign dependency in the industry.

Osman BAŞHAN









EXPLANATION OF THE PRODUCT

- Histological and Pathological samples are kept inside of the %10 buffered formaldehyde solution, due to MOSLAB Formaldehyde filled specimen containers being previously prepared, the products usage reduces the contact with different dangerous chemicals of our product users. Thus, our customers can easily get the results efficient and fast. Our product which has various packing types is being produced with our high quality standards and it is leak proof.



GENERAL LABORATORY CHEMICALS

FORMALDEHYDE %10



KOD: BKFO00001 5 LT

KOD: BKFO00003 1 LT

FORMALDEHYDE %37-40



KOD: BKFO00004 5 LT

KOD: BKFO00002 1 LT

XYLENE 5 LT



KOD: BKKS00001 1 LT

KOD: BKKS00002 5 LT

ACETONE 5 LT



KOD: BKAS00001 1 LT

KOD: BKAS00005 5 LT

GENERAL LABORATORY CHEMICALS

FORMALDEHYDE %10



KOD: BKFO00001 5 LT

KOD: BKFO00003 1 LT

FORMALDEHYDE %37-40



KOD: BKFO00004 5 LT

KOD: BKFO00002 1 LT

XYLENE 5 LT



KOD: BKKS00001 1 LT

KOD: BKKS00002 5 LT

ACETONE 5 LT



KOD: BKAS00001 1 LT

KOD: BKAS00005 5 LT

DISTILLED WATER

The product is generally used in irrigation process and it can also be used in washing, rinsing and dilution processes which are free from apyrogen and solute. Likewise, distilled water could be used in pharmaceutical supplements as in nutritional mixtures which are not used intravenously. The product is not suitable with intravenous applications.

KOD: BKDS00003 DISTILLED WATER 500 ML

KOD: BKDS00005 DISTILLED WATER 1000 ML - SQUARE PET

KOD: BKDS00007 DISTILLED WATER 1000 ML - CYLINDER PET

KOD: BKDS00008 DISTILLED WATER 1000 ML - PP BOTTLE

KOD: BKDS00005 DISTILLED WATER 5000 ML



PELLET PARAFFIN

PATHOLOGY

- Paraffin is produced in high quality to perform tissue embedding procedure in Histology and Pathology Laboratories.
 -The paraffin waxes melting point is exactly between 56°C - 58°Cdegrees, and it allows samples to not be effected by high temperatures.



PHYSIOTHERAPY

- The paraffin wax which is suitable for Physiotherapy is used for treatment of hands and feet joint pain, rheumatism treatments.
 - The paraffin wax is pure and does not have oil content, furthermore it does not have DMSO and polymer addition.



KOD: BKBP0001 PATHOLOGY

KOD: BKBP0002 PHYSIOTHERAPY

VASELINE



KOD: BKVA0001 VASELINE LIQUID 1L

KOD: BKVA0002 VASELINE CREAM 100 mL

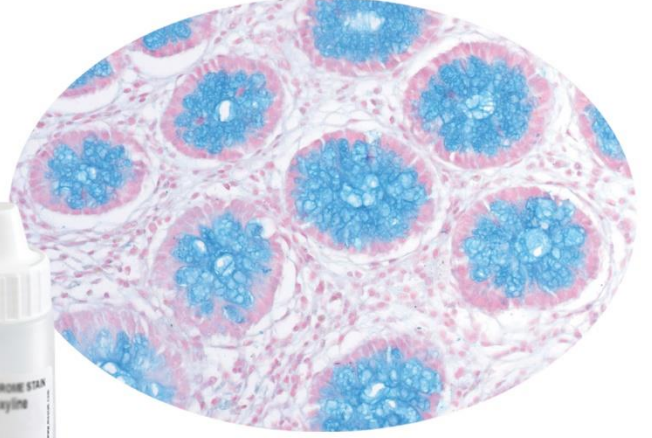
SMEAR SPRAY



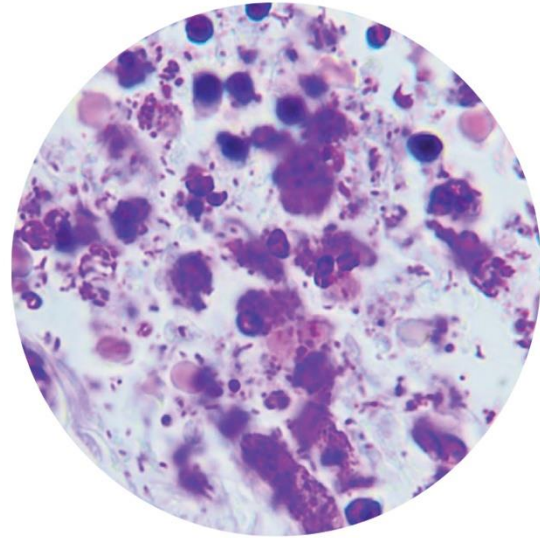
KOD: BKSS0001 180 mL

KOD: BKSS0002 200 mL

PATHOLOGY AND HISTOLOGY STAINS



BKAB00001	ALCIAN BLUE PH 2,5 PAS	100 TEST
BKAB00002	ALCIAN BLUE PH 2,5	100 TEST
BKMT00001	MASSON TRICROME	100 TEST
BKCR00001	CONGO RED	100 TEST
BKDB00001	PEARL'S PRUSSIAN BLUE	100 TEST
BKEV00001	ELASTIC VAN GIESSON	100 TEST
BK GK00001	GIEMSA KIT	100 TEST
BKGB00004	GRAM STAIN KIT	100 TEST
BKKV00002	CRYSTAL VIOLET	100 TEST
BKMM00002	METHYL GREEN PYRONIN	100 TEST
BKMC00001	MUCICARMINE STAIN	100 TEST
BKPS00001	PERIODICACID SCHIFF	100 TEST
BKTB00001	TOLUIDINE BLUE	100 TEST
BKVG00001	VAN GIESON STAIN	100 TEST
BKVE00001	VERHOEFF ELASTIC STAIN	100 TEST
BKZN00001	ZIEHL NEELSEN	100 TEST



CRYSTAL VIOLET

DECOLORIZING SOLUTION

LUGOL SOLUTION

FUCHSIN SOLUTION

BKGB00001	GRAM STAIN SOLUTION	250 ML x 4
BKGB00002	GRAM STAIN SOLUTION	500 ML x 4
BKGB00003	GRAM STAIN SOLUTION	1000 ML x 4
BKMM00001	METHYLENE BLUE	1000 ML
BKOG00001	ORANGE G	500 ML
BKOG00002	ORANGE G	1000 ML
BKOG00003	ORANGE G	250 ML
BKPS00001	PERIODIC ACID SCHIFF (PAS)	500 ML
BKPS00002	PERIODIC ACID SCHIFF (PAS)	1000 ML
BKPS00003	PERIODIC ACID SCHIFF (PAS)	250 ML
BKSF00001	FUCHSIN SOLUTION	1000 ML
BKSS00001	SAFRANIN SOLUTION	1000 ML
BKSS00002	SCHIFF SOLUTION	1000 ML
BKSS00003	SCHIFF SOLUTION	500 ML
BKTB00002	TOLUIDINE BLUE	1000 ML
BKTB00003	TOLUIDINE BLUE	250 ML
BKTB00004	TOLUIDINE BLUE	500 ML
BKHF00001	HOLLAND'S FIXATIVE	1000 ML



BKGS00001	GIEMSA SOLUTION	500 ML
BKGS00002	GIEMSA SOLUTION	1000 ML
BKGS00003	GIEMSA SOLUTION	250 ML
BKOG00001	ORANGE G	500 ML
BKOG00002	ORANGE G	1000 ML
BKOG00003	ORANGE G	250 ML
BKGC00001	GOLD CHLORIDE	100 ML
BKHM00001	HARRIS HEMATOXYLIN	500 ML
BKHM00002	HARRIS HEMATOXYLIN	1000 ML
BKHM00003	HARRIS HEMATOXYLIN	250 ML
BKKV00002	CRYSTAL VIOLET	1000 ML
BKLU00001	LUGOL SOLUTION	1000 ML
BKMC00001	MUCICARMINE SOLUTION	1000 ML
BKMG00001	MAY GRUNWALD	500 ML
BKMG00002	MAY GRUNWALD	1000 ML
BKMG00003	MAY GRUNWALD	500 ML
BKMH00001	MAYERS HEMATOXYLIN	500 ML
BKMH00002	MAYERS HEMATOXYLIN	1000 ML
BKMH00003	MAYERS HEMATOXYLIN	250 ML

Disinfecsol

HAND AND SKIN ANTISEPTIC DISINFECTANT

- Disinfecsol named hand and skin disinfectant has a formula which consists %72 Alcohol and skin protective agents.
- Generally it is used for antiseptis of hands and skin.



T.C. SAĞLIK BAKANLIĞI TÜRKİYE İLAÇ VE FİZYOTERAPİ KURUMU	
BIYOSİDAL ÜRÜN RUHSATNAMESİ (İMAL)	
Ruhsat No: 2020/23	Ruhsat Tarihi: 15.12.2020
Çinim İsimi adı / Çinim İsmi	Disinfecsol El ve Cilt için Antiseptik & Dezenfektan / 1
Aktif maddeler isimleri	Etilanol, 2-Propenol
Aktif maddeler CAS numaraları	64-17-5, 87-63-9
Aktif maddeler ve oranları	Etilanol, % 51,5 (v/v), 2-Propenol % 22,2 (v/v)
Helof yardımcıları	S. arvensis, P. arvensis, E. arvensis, E. arvensis, C. arvensis, A. arvensis, Z. arvensis, S. arvensis, E. arvensis, C. arvensis, A. arvensis, Z. arvensis
Fiziki İsim (Tür, Renk, Konsan. vb.)	Sıvı
Uygunluk dozları	5-5 ml
Ambarlı miktar/verimler	50 ml, 100 ml, 150 ml, 200 ml, 250 ml, 300 ml, 400 ml, 500 ml, 600 ml, 700 ml, 800 ml, 1 l, 2 l, 3 l, 4 l, 5 l, 10 l, 15 l, 20 l, 25 l, 30 l, 40 l, 50 l, 100 l, 1000 L
Ambarlar	Çinim İsmi antiseptik verilmektedir.
Zararlı ve Önemli İncelemeler	H226, H317, H319, H336, P201, P202, P203, P204, P205, P206, P207, P208, P209, P210, P211, P212, P213, P214, P215, P216, P217, P218, P219, P220, P221, P222, P223, P224, P225, P226, P227, P228, P229, P230, P231, P232, P233, P234, P235, P236, P237, P238, P239, P240, P241, P242, P243, P244, P245, P246, P247, P248, P249, P250, P251, P252, P253, P254, P255, P256, P257, P258, P259, P260, P261, P262, P263, P264, P265, P266, P267, P268, P269, P270, P271, P272, P273, P274, P275, P276, P277, P278, P279, P280, P281, P282, P283, P284, P285, P286, P287, P288, P289, P290, P291, P292, P293, P294, P295, P296, P297, P298, P299, P300, P301, P302, P303, P304, P305, P306, P307, P308, P309, P310, P311, P312, P313, P314, P315, P316, P317, P318, P319, P320, P321, P322, P323, P324, P325, P326, P327, P328, P329, P330, P331, P332, P333, P334, P335, P336, P337, P338, P339, P340, P341, P342, P343, P344, P345, P346, P347, P348, P349, P350, P351, P352, P353, P354, P355, P356, P357, P358, P359, P360, P361, P362, P363, P364, P365, P366, P367, P368, P369, P370, P371, P372, P373, P374, P375, P376, P377, P378, P379, P380, P381, P382, P383, P384, P385, P386, P387, P388, P389, P390, P391, P392, P393, P394, P395, P396, P397, P398, P399, P400, P401, P402, P403, P404, P405, P406, P407, P408, P409, P410, P411, P412, P413, P414, P415, P416, P417, P418, P419, P420, P421, P422, P423, P424, P425, P426, P427, P428, P429, P430, P431, P432, P433, P434, P435, P436, P437, P438, P439, P440, P441, P442, P443, P444, P445, P446, P447, P448, P449, P450, P451, P452, P453, P454, P455, P456, P457, P458, P459, P460, P461, P462, P463, P464, P465, P466, P467, P468, P469, P470, P471, P472, P473, P474, P475, P476, P477, P478, P479, P480, P481, P482, P483, P484, P485, P486, P487, P488, P489, P490, P491, P492, P493, P494, P495, P496, P497, P498, P499, P500, P501, P502, P503, P504, P505, P506, P507, P508, P509, P510, P511, P512, P513, P514, P515, P516, P517, P518, P519, P520, P521, P522, P523, P524, P525, P526, P527, P528, P529, P530, P531, P532, P533, P534, P535, P536, P537, P538, P539, P540, P541, P542, P543, P544, P545, P546, P547, P548, P549, P550, P551, P552, P553, P554, P555, P556, P557, P558, P559, P560, P561, P562, P563, P564, P565, P566, P567, P568, P569, P570, P571, P572, P573, P574, P575, P576, P577, P578, P579, P580, P581, P582, P583, P584, P585, P586, P587, P588, P589, P590, P591, P592, P593, P594, P595, P596, P597, P598, P599, P600, P601, P602, P603, P604, P605, P606, P607, P608, P609, P610, P611, P612, P613, P614, P615, P616, P617, P618, P619, P620, P621, P622, P623, P624, P625, P626, P627, P628, P629, P630, P631, P632, P633, P634, P635, P636, P637, P638, P639, P640, P641, P642, P643, P644, P645, P646, P647, P648, P649, P650, P651, P652, P653, P654, P655, P656, P657, P658, P659, P660, P661, P662, P663, P664, P665, P666, P667, P668, P669, P670, P671, P672, P673, P674, P675, P676, P677, P678, P679, P680, P681, P682, P683, P684, P685, P686, P687, P688, P689, P690, P691, P692, P693, P694, P695, P696, P697, P698, P699, P700, P701, P702, P703, P704, P705, P706, P707, P708, P709, P710, P711, P712, P713, P714, P715, P716, P717, P718, P719, P720, P721, P722, P723, P724, P725, P726, P727, P728, P729, P730, P731, P732, P733, P734, P735, P736, P737, P738, P739, P740, P741, P742, P743, P744, P745, P746, P747, P748, P749, P750, P751, P752, P753, P754, P755, P756, P757, P758, P759, P760, P761, P762, P763, P764, P765, P766, P767, P768, P769, P770, P771, P772, P773, P774, P775, P776, P777, P778, P779, P780, P781, P782, P783, P784, P785, P786, P787, P788, P789, P790, P791, P792, P793, P794, P795, P796, P797, P798, P799, P800, P801, P802, P803, P804, P805, P806, P807, P808, P809, P810, P811, P812, P813, P814, P815, P816, P817, P818, P819, P820, P821, P822, P823, P824, P825, P826, P827, P828, P829, P830, P831, P832, P833, P834, P835, P836, P837, P838, P839, P840, P841, P842, P843, P844, P845, P846, P847, P848, P849, P850, P851, P852, P853, P854, P855, P856, P857, P858, P859, P860, P861, P862, P863, P864, P865, P866, P867, P868, P869, P870, P871, P872, P873, P874, P875, P876, P877, P878, P879, P880, P881, P882, P883, P884, P885, P886, P887, P888, P889, P890, P891, P892, P893, P894, P895, P896, P897, P898, P899, P900, P901, P902, P903, P904, P905, P906, P907, P908, P909, P910, P911, P912, P913, P914, P915, P916, P917, P918, P919, P920, P921, P922, P923, P924, P925, P926, P927, P928, P929, P930, P931, P932, P933, P934, P935, P936, P937, P938, P939, P940, P941, P942, P943, P944, P945, P946, P947, P948, P949, P950, P951, P952, P953, P954, P955, P956, P957, P958, P959, P960, P961, P962, P963, P964, P965, P966, P967, P968, P969, P970, P971, P972, P973, P974, P975, P976, P977, P978, P979, P980, P981, P982, P983, P984, P985, P986, P987, P988, P989, P990, P991, P992, P993, P994, P995, P996, P997, P998, P999, P1000
Ruhsat sahibi ve adresi	MİTRAKAL OLUŞUM SANAYİ VE TİC. LTD. ŞTİ. Dünya Mah. Sıpa Sanayi Sitesi 2008. Cad. No:20/2 Kilimerciköy/ANKARA
Fabrika veya imalatın adresi	MİTRAKAL OLUŞUM SANAYİ VE TİC. LTD. ŞTİ. Dünya Mah. Sıpa Sanayi Sitesi 2008. Cad. No:20/2 Kilimerciköy/ANKARA
Ruhsatın geçerli olduğu süre	15.12.2022
Yerleşik adres ve telefon	15.12.2020, İlhanca Mah.
31/12/2009 tarih ve 27429 sayılı (4. ekilere) Resmî Gazete'de yayımlanan Biyosidal Ürünler Yönetmeliğinin 14. maddesi gereğince yabancılara ve yerli biyosidal üreticilere ve imalatçılarına satışa sunulmaktadır.	
Doç. Dr. Tolun TOLUNAY Karar Başkanı	



100 mL



100 mL



250 mL



500 mL



1000 mL



5000 mL

KOD: BKDF00001 100 ML - Flip top cap

KOD: BKDF00010 100 ML Spray cap

KOD: BKDF00011 250 ML - Spray cap

KOD: BKDF00003 500 ML

KOD: BKDF00004 1000 ML

KOD: BKDF00005 5000 ML

KOD: BKDF00007 20 LT

KOD: BKDF00008 30 LT

BLOCK ARCHIVE CABINETS

BLOCK ARCHIVE CABINET 10 DRAWERS 12 DIVISION

- One block archive cabinet has 10 drawers.
- Each drawer divided into 12.
- Each drawer has a capacity of 450 - 500 cassettes.
- It has different color options and the coloring process is done with electrostatic powder coating.
- It has a locking system and wheel option.

KOD: BMBA00010

STANDART

KOD: BMBA00011

LOCKING SYSTEM

KOD: BMBA00012

WHEEL



BLOCK ARCHIVE CABINET 20 DRAWERS 12 DIVISION

- One block archive cabinet has 20 drawers.
- Each drawer divided into 12.
- Each drawer has a capacity of 450 - 500 cassettes.
- It has different color options and the coloring process is done with electrostatic powder coating.
- It has a locking system and wheel option.



KOD: BMBA00020

STANDART

KOD: BMBA00021

LOCKING SYSTEM

KOD: BMBA00022

WHEEL

MEGA BLOCK ARCHIVE CABINET

- One block archive cabinet has at least 5 drawers.
- Each drawer divided into 6.
- Each drawer has a capacity of 130 cassettes.
- It has different color options and the coloring process is done with electrostatic powder coating.

KOD: BMBA00015

MEGA BLOCK ARCHIVE



MICROSCOPIC SLIDE ARCHIVE

1 UNIT 12 DRAWERS

- One microscopic slide archive has 1 unit and 12 drawers.
- Each drawer without spring has a capacity of 220 microscopic slides.
- Each drawer with spring has a capacity of 110 microscopic slides.
- It has different color options and the coloring process is done with electrostatic powder coating.

KOD: BMLA00001 STANDART

KOD: BMBA00002 WITH SPRING



10 UNITS 12 DRAWERS

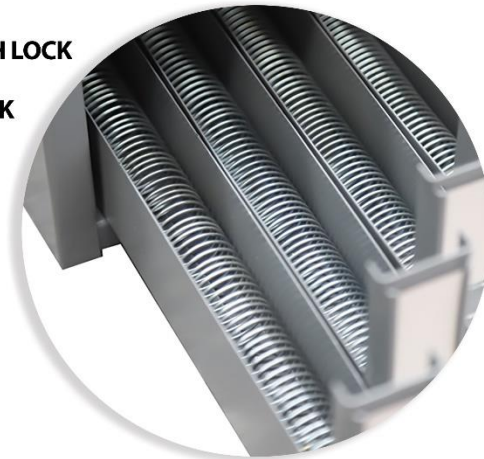
- One microscopic slide archive has 10 units.
- Each unit divided into 12 drawers.
- Each drawer without spring has a capacity of 220 microscopic slides.
- Each drawer with spring has a capacity of 110 microscopic slides.
- It has a locking system option.
- It has different color options and the coloring process is done with electrostatic powder coating.

KOD: BMLA00010 STANDART

KOD: BMLA00011 WITH SPRING

KOD: BMLA00012 WITHOUT SPRING WITH LOCK

KOD: BMLA00012 WITH SPRING AND LOCK



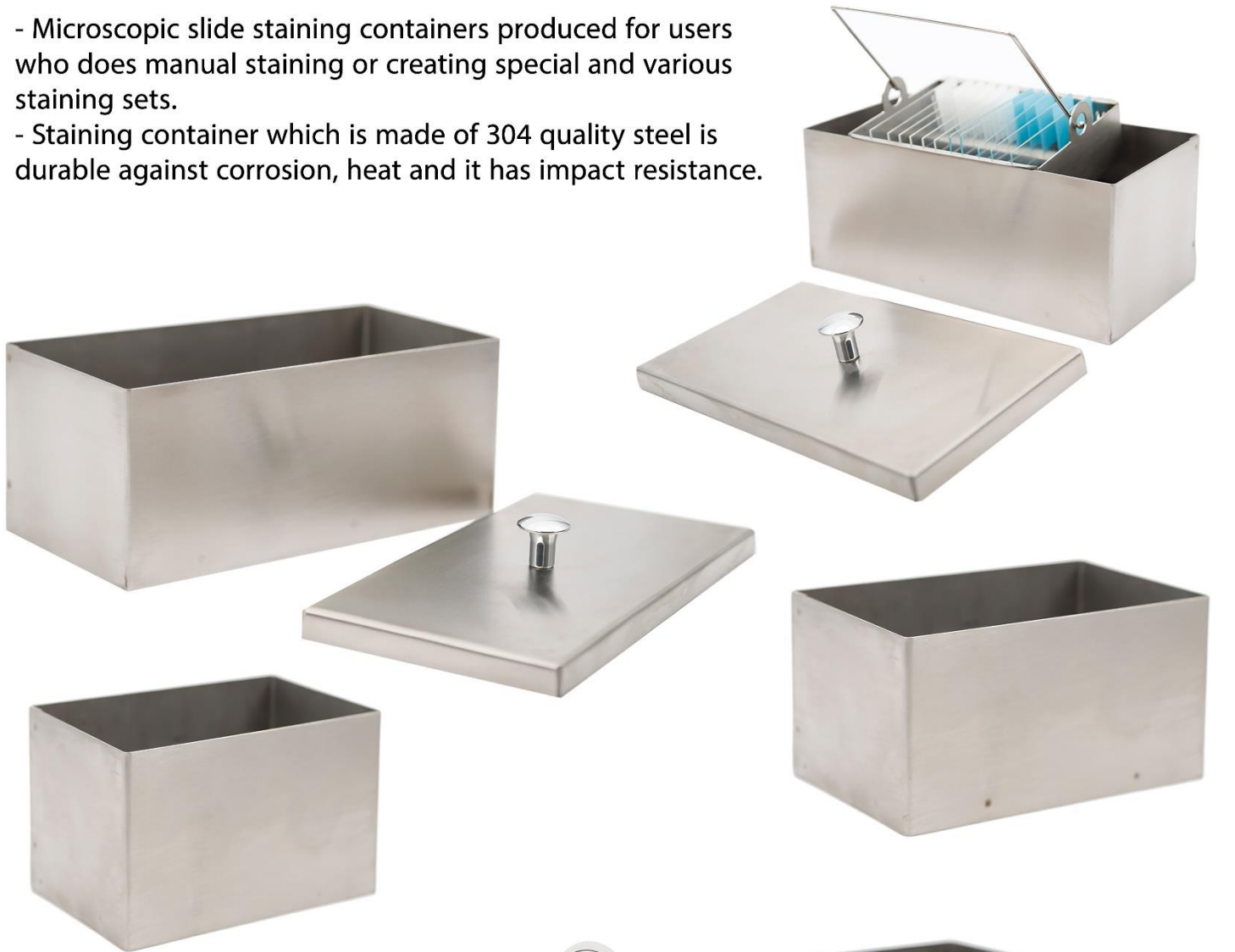
MEGA MICROSCOPIC SLIDE ARCHIVE CABINET STANDARD

KOD: BMLA00014 STANDART



STAINING CONTAINER

- Microscopic slide staining containers produced for users who does manual staining or creating special and various staining sets.
- Staining container which is made of 304 quality steel is durable against corrosion, heat and it has impact resistance.



KOD: BMBK00001 10 Slides

KOD: BMBK00002 20 Slides

KOD: BMBK00003 30 Slides

KOD: BMBK00004 45 Slides

KOD: BMBK00005 60 Slides

KOD: BMBK00006 VERTICAL (5-60 Slides)



MICROSCOPIC SLIDE BASKET

- The microscopic slide basket which is made of 304 quality steel is durable against corrosion, heat and it has impact resistance.
- The product is suitable for using with microscopic slide staining containers and it has various capacities.



KOD: BMLS00001 5 Slides

KOD: BMLS00002 10 Slides

KOD: BMLS00003 20 Slides

KOD: BMLS00004 30 Slides

KOD: BMLS00005 45 Slides

KOD: BMLS00006 60 Slides

FINGER SPLINT

- Finger splint is produced in order to make the orthopedic injuries stay in a stable position and fixing it in an intended position.



KOD: BMPA00001 10 CM

KOD: BMPA00002 15 CM

KOD: BMPA00003 20 CM

KOD: BMPA00004 25 CM

KOD: BMPA00005 30 CM

PETRI DISHES

- Petri dishes are produced without human contact and with fully automatic machines in order to be used in various studies such as Microbiology and Bacteriology.
- The raw material of the product is polystyrene.



OUR PRODUCTS ARE PRODUCED AS ACEPTIC, HOWEVER IF IT IS REQUIRED WE STERILIZE THEM WITH GAMMA STERILIZATION. (10-6 SAL RADIATION)



KOD: BPPK00005 (PK/500) 90 mm

KOD: BPPK00006 (PK/500) 90 mm Gamma Sterilized

Diameter x Height 90 x 15 mm Division Without Division



KOD: BPPK00007 (PK/500) 90 mm

KOD: BPPK00007 (PK/500) 90 mm Gamma Sterilized

Diameter x Height 90 x 15 mm Division With Division



KOD: BPPK00001 (PK/500) 120 mm

KOD: BPPK00003 (PK/500) 120 mm Gamma Sterilized

Diameter x Height 120 x 18 mm Division Without Division



KOD: BPIB00002 (PK/500) 150 mm

KOD: BPIB00004 (PK/500) 150 mm Gamma Sterilized

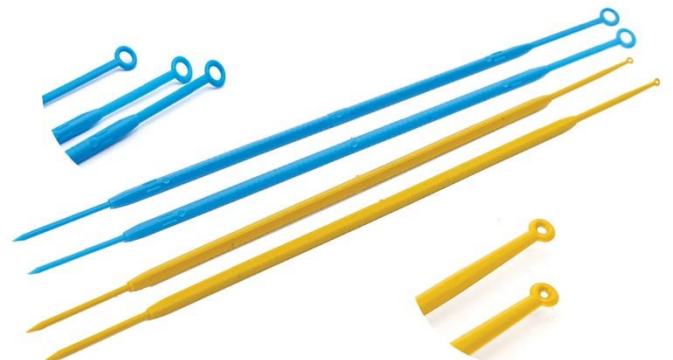
Diameter x Height 150 x 20 mm Division Without Division

PLASTİK ÖZE

- Inoculation Loops are used in Microbiology and Bacteriology studies during culture processes.
- Specially designed Inoculation Loops are allowing easy handling, working stabilization, arranging orientation and appropriate angle.
- The loop has two edges and one of it is sharp, another one is circular edge.

KOD: BPOZ00001 10 µl BLUE

KOD: BPOZ00002 1 µl YELLOW



WATER SAMPLING BOTTLES

- The water sampling bottle is produced with high quality raw material for the Microbiological and Chemical analysis of liquids.
- The water sampling bottles has a scale embossed onto the bottle.
- It has an option of Sodium thiosulphate addition into bottles which are used for analysis of edible water and chlorinated waters.
- Product has a label which has LOT number and expiring date which are very helpful for tracking the analysis.
- The screwed cap of the product has safety collar.



OUR PRODUCTS ARE PRODUCED AS ACEPTIC, HOWEVER IF IT IS REQUIRED WE STERILIZE THEM WITH GAMMA STERILIZATION. (10-6 SAL RADIATION)



- KOD: BPSN00026 (PK/318) 250 ML White**
- KOD: BPSN00025 (PK/318) 250 ML Amber**
- KOD: BPSN00024 (PK/318) 250 ML Transparent**
- KOD: BPSN00029 (PK/180) 500 ML White**
- KOD: BPSN00028 (PK/180) 500 ML Amber**
- KOD: BPSN00027 (PK/180) 500 ML Transparent**
- KOD: BPSN00033 (PK/194) 500 ML PET**
- KOD: BPSN00032 (PK/100) 1000 ML White**
- KOD: BPSN00031 (PK/100) 1000 ML Amber**
- KOD: BPSN00030 (PK/100) 1000 ML Transparent**
- KOD: BPSN00034 (PK/100) 1000 ML PET**

- KOD: BPSN00004 (PK/122) 250 ML White - Sodium thiosulphate**
- KOD: BPSN00005 (PK/122) 250 ML Amber - Sodium thiosulphate**
- KOD: BPSN00006 (PK/122) 250 ML Transparent - Sodium thiosulphate**
- KOD: BPSN00010 (PK/180) 500 ML White - Sodium thiosulphate**
- KOD: BPSN00011 (PK/180) 500 ML Amber - Sodium thiosulphate**
- KOD: BPSN00012 (PK/180) 500 ML Transparent - Sodium thiosulphate**
- KOD: BPSN00020 (PK/194) 500 ML PET - Sodium thiosulphate**
- KOD: BPSN00016 (PK/100) 1000 ML White - Sodium thiosulphate**
- KOD: BPSN00017 (PK/100) 1000 ML Amber - Sodium thiosulphate**
- KOD: BPSN00018 (PK/100) 1000 ML Transparent - Sodium thiosulphate**
- KOD: BPSN00022 (PK/112) 1000 ML PET - Sodium thiosulphate**

URINE AND FAECES CONTAINERS

URINE CONTAINERS

- The product is highly leak-proof and it prevents contamination of the sample with leaking.
- The product has a body structure which is suitable with pneumatic systems.
- Urine container have a label on the body part of it which enables writing on the label.
- The raw material of the product is polypropylene.
- The products has 100 mL capacity.



KOD: BPIB00005 (PK/1000)

URINE CONTAINER

KOD: BPIB00003 (PK/1000)

PACKED URINE CONTAINER

VACUUMED URINE CONTAINER

- The product has a safe system which enables patients and health care personnel not to contact with sample.
- The product is highly leak-proof and it prevents contamination of the sample with leaking.
- The product has a suitable cap for transferring to vacuumed systems.
- Products label design is arranged specially for preventing patients contact with collecting needle.
- Vacuumed urine container have a label on the body part of it which enables writing on the label.
- The raw material of the product is polypropylene.
- The products has 100 mL capacity.



KOD: BPVI00001 (PK/1000)

VACUUMED URINE CONTAINER

KOD: BPVI00007 (PK/1000)

PACKED VACUUMED URINE CONTAINER



OUR PRODUCTS ARE PRODUCED AS ACEPTIC, HOWEVER IF IT IS REQUIRED WE STERILIZE THEM WITH GAMMA STERILIZATION. (10-6 SAL RADIATION)

24 HOURS URINE CONTAINERS

- The product is suitable for collecting urine (24 hours) and transportation due to it is being leak proof.
- Cap of the product is suitable for vacuumed systems while transferring.
- It has embossed scale on it and also labeling part.
- The raw material is polypropylene.
- The products have 3000 mL & 5000 mL capacity



KOD: BPIB00001 (PK/40)

3000 mL WHITE - WITH CAP

KOD: BPIB00002 (PK/40)

3000 mL AMBER - WITH CAP

KOD: BPIB00008 (PK/40)

3000 mL WHITE - VACUUMED CAP

KOD: BPIB00009 (PK/40)

3000 mL AMBER - VACUUMED CAP

KOD: BPIB00010 (PK/40)

5000 mL WHITE - WITH CAP

KOD: BPIB00011 (PK/40)

5000 mL WHITE - VACUUMED CAP

PLASTIC URINAL

- Product is produced for patients that has confined to bed.
- The purpose of the product is collecting stool and urine.
- It can be easily carried by it is handling and cap.
- The raw material of the product is plastic and it can be used several times with washing.



KOD: BPPS00001 (PK/30)

FAECES CONTAINER

- The product has a spoon for preventing healthcare personnels contact with sample.
- The raw material of the product is polypropylene
- The product is 25 mL and it has screw cap with spoon.
- It also has an option of 15mL which is suitable for handling with one finger.



KOD: BPGK00002(PK/1500)

FAECES CONTAINER - SPOON 15 mL

KOD: BPGK00001 (PK/1000)

FAECES CONTAINER - SPOON 25 mL

KOD: BPGK00005 (PK/1000)

FAECES CONTAINER 50 mL

MEDICAL WASTE CONTAINER SHARPS CONTAINER



- The product has three main parts; container, cap and additional upper cap.
- It is suitable for medical sharps disposal and it is durable against them.
- Inner cap has guiding parts for dispensing needles, lancets and other infected materials without contacting them.
- This product should be used only once. It is disposable.
- After it is filled with sharps, it should be annihilated due to it is being medical waste.





0,2 L



0,5 L



0,7 L



1 L



1,3 L



2 L



3 L



5 L



7,5 L



10 L



27-30 L



30 - 32 L

KOD:BPTA00001 (500 PCS) **0,2 L**

KOD:BPTA00002 (200 PCS) **0,5 L**

KOD:BPTA00003 (200 PCS) **0,7 L**

KOD:BPTA00004 (100 PCS) **1 L**

KOD:BPTA00005 (100 PCS) **1,3 L**

KOD:BPTA00006 (80 PCS) **2 L**

KOD:BPTA00007 (80 PCS) **3 L**

KOD:BPTA00008 (60 PCS) **5 L**

KOD:BPTA00009 (50 PCS) **7,5 L**

KOD:BPTA00010 (45 PCS) **10 L**

KOD:BPTA00011 (20 PCS) **27-30 L**

KOD:BPTA00012 (15 PCS) **30-32 L**

TUBE VARIETIES

FALCON TUBE



CONICAL FALCON TUBE
15 ML



CONICAL FALCON TUBE
50 ML

TEST TUBE



TEST TUBE
10 ML

KOD: BPFT00001

CONICAL FALCON TUBE 15 ML

KOD: BPFT00002

CONICAL FALCON TUBE 50 ML

KOD: BPTT00001

TEST TUBE 10 ML



SPECIMEN CONTAINERS

PATHOLOGIC SAMPLE STORAGE CONTAINERS

PRODUCT EXPLANATION

- Product is made of transparent polypropylene.
- Products below 5000mL are produced with screw cap.
- The product is suitable for keeping specimens\samples inside.
- The product has a label for writing patient details.
- The specimen container is resistant to chemicals such as xylene and formaldehyde.



1,5-2 mL 15 mL 25-30 mL 50 mL 100 mL



250 mL 500 mL 1000 mL 2000 mL 3000 mL



5 L



10 L

KOD:BPPEL00003 (10x1000 ADET) 1,5- 2 mL

KOD:BPSP00001 (4x500 ADET) 15 mL

KOD:BPSP00002 (800 ADET) 25-30 mL

KOD:BPSP00003 (500 ADET) 50 mL

KOD:BPSP00004 (1000 ADET) 100 mL

KOD:BPTA00005 (400 ADET) 250 mL

KOD:BPSP00006 (200 ADET) 500 mL

KOD:BPSP00007 (120 ADET) 1000 mL

KOD:BPTA00009 (120 ADET) 2000 mL

KOD:BPTA00011 (80 ADET) 3000 mL

KOD:BPTA00013 (40 ADET) 5000 mL

KOD:BPTA00014 (25 ADET) 10 L

KOD:BPTA00015 (15 ADET) 20 L

SMEAR SLIDE MAILER

- Smear slide mailer designed specifically for cytology smear tests and studies.

2 SLIDES



5 SLIDES



KOD: BPSK00001 (PK/6*250)

2 SLIDES

KOD: BPIB00010 (PK/4*100)

5 SLIDES

MAPE (MICROSCOPE SLIDE TRAY)



KOD: BPIB00001

CARDBOARD MAPE 10 SLIDES

KOD: BPIB00002

CARDBOARD MAPE 20 SLIDES

KOD: BPIB00003

CARDBOARD MAPE 40 SLIDES

TREATMENT TRAY

- Treatment tray is used for bed-side treatments and wound dressings, usage and carrying of the product is easy.

- 1,3 Liter MOSLAB Sharps container has a space on the treatment tray and it is easy to carry it without overturning it.



KOD: BPTT00001

PASTEUR PIPETTE



KOD: BPPP00001 (PK/1000)

3 ML

PLASTIC MAPE

- Plastic Mape is produced with high quality POM which is a stiff and durable raw material. It has a capacity of 20 slides.



KOD: BPMT00001

PLASTIC MAPE 20 SLIDES

TISSUE EMBEDDING PRODUCTS

TISSUE EMBEDDING CASSETTES

- Tissue embedding cassettes are produced from POM (Polyoxymethylene) which is durable against histological solvents.
- The product has a special design which allows it be suitable with any microtome machine.
- In front of the each tissue embedding cassette there is a sloping area for writing which is suitable with printers.
- Inner part of the tissue embedding cassettes has a perforated area which allows liquids to be permeable.

EMBEDDING CASSETTE WITH LID



EMBEDDING CASSETTE WITHOUT LID



BASE MOUULD

- The product is made by stainless steels, thus it is easier to paraffinized samples to remove from the base mold.



KOD: BMBM00001 5x5x5 mm

KOD: BMBM00002 10x10x5 mm

KOD: BMBM00003 20x20x5 mm

STEEL CASSETTE LID

- Steel cassette lid which is made of 304 quality steel is durable against corrosion, heat and it has impact resistance.
- The product has a porous structure which enables liquids to be permeable.
- Steel cassette lids are compatible with cassettes.



KOD: BPKK00001 EMBEDDING CASSETTE WITHOUT LID

KOD: BPKK00015 EMBEDDING CASSETTE WITH LID

KOD: BPKK00020 EMBEDDING CASSETTE CARTRIDGE - LID

KOD: BMCK00001 STEEL CASSETTE LID



5x5x5



10x10x5



20x20x5



20x25x7



20x30x9



25x30x5

KOD: BMBM00004 20x25x7 mm

KOD: BMBM00005 20x30x9 mm

KOD: BMBM00006 25x30x5 mm

AUTOPSY BAG

- As being MOSLAB ("M"edikal "O"luşum "S"anayi) we produced an autopsy bag for all branches of Forensic Medicine in Turkey and with this product, which is durable against heat and it has impact resistance with seal attachment, field staff can easily collect samples and send them to related agencies.
- Each part of the autopsy bag would fit its inner parts and minimize the stock area.



KOD: BPOC00001

AUTOPSY BAG

MOS LAB®



MEDİKAL OLUŞUM SANAYİ TİC. LTD. ŞTİ

Orhaniye Mah. Fatih Sultan Mehmet Bul. Selpa Sanayi Sitesi 506/54
Kahramankazan - Ankara - TURKEY

Tel: +90 (312) 395 23 96

Mail: export1@moslab.com

www.moslab.com



[medikalolusum](https://www.instagram.com/medikalolusum)



[@medikalolusum](https://www.facebook.com/medikalolusum)