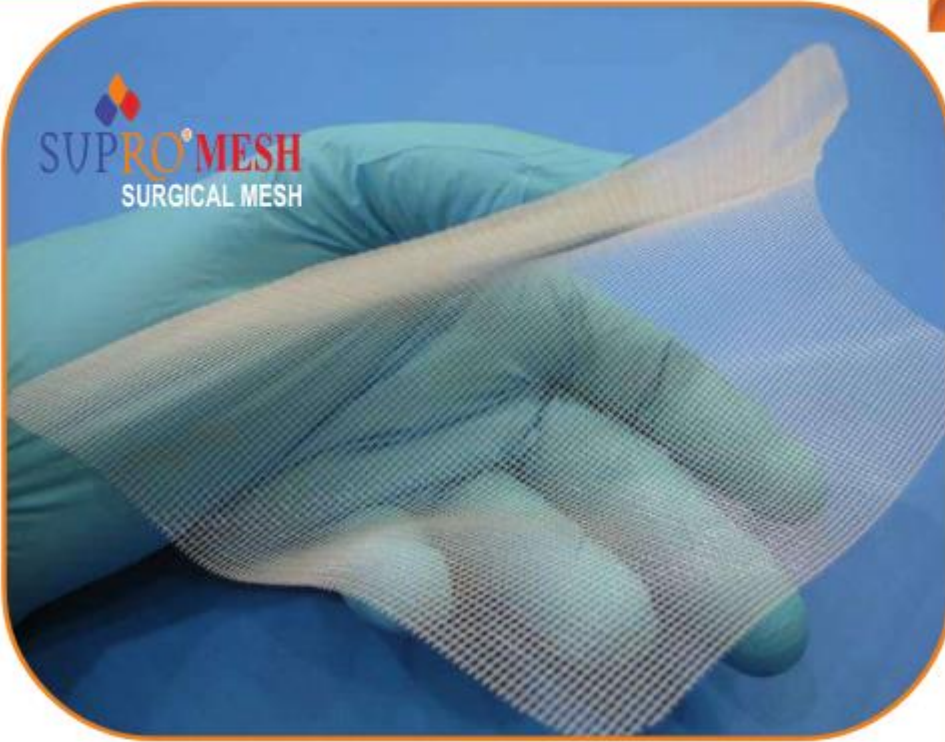


POLYPROPYLENE MESH FOR HERNIA REPAIR

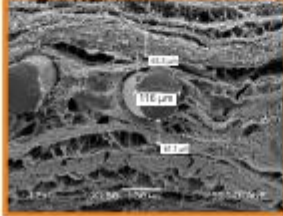
**ADVANTAGES:**

- Thinner than all available meshes.
- Providing extra ease and comfort for the patient.
- Ideal flexibility providing easier placement.
- Ideal tensile strength, excellent resistance and elasticity.
- Ideal porosity, optimum rigidity and minimal cost.
- Minimum infection risk.
- No shrinkage
- High capacity for colonization and concretion.
- Helps for healing of scars.

600 microns thick mesh - 1 month later



300 microns thick mesh - 1 month later



300 Micronluk kalın mesh -1 ay sonra

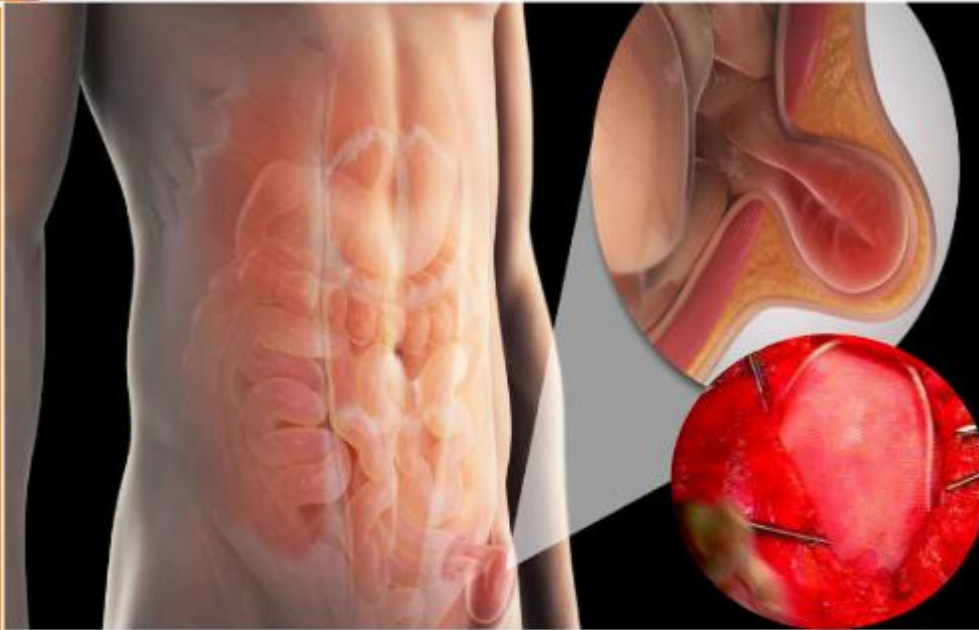
600 Micronluk kalın mesh -1 ay sonra ,

AVANTAJLARI;

- Mevcut tüm yamalardan daha incedir.
- Hasta için ekstra kolaylık ve rahatlık sağlar.
- İdeal esnekliği, kolay yerleştirilmesini sağlar.
- İdeal gerilim gücü, mükemmel dayanıklılık ve elastikiyet.
- İdeal gözenekli yapı, optimum sertlik ve düşük maliyet.
- Minimum enfeksiyon riski.

Fibrosis measurement
by electron microscope

POLYPROPYLENE MESH FOR HERNIA REPAIR



Mesh is permeable; this gives it a high capacity for establishment and integration.

Mesh is transparent and flexible, making it easy to use in celioscopy or laparotomy and enabling it to fit perfectly against the cavity wall.

Mesh has excellent multidirectional mechanical properties and exceptional resistance to tearing.

INDICATIONS

Mesh is designed to use for treatment of inguinal, femoral, umbilical, scrotal and incisional hernias and to provide reinforcement to the repaired hernia.

It can be used by open surgery or laparotomic techniques.



SUPRO'MESH
SURGICAL MESH