

ordering information

| Reference | A Usable length | B Proximal O.D. | C Distal O.D. | D Proximal I.D. | E Distal I.D. | F Hydrophilic coating |
|------------|--------------------|--------------------|------------------|--------------------|------------------|--------------------------|
| BALLAST80 | 80 cm | 0.106" | 0.100" | 0.088" | 0.088" | 20 cm |
| BALLAST90 | 90 cm | | | | | |
| BALLAST100 | 100 cm | | | | | |

ballast compatibilities

8F short introducer sheath

6F diagnostic catheter

each ballast pack contains

Long dilator

Introducer sheath

9F Hemostasis valve

8F Hemostasis valve adapter

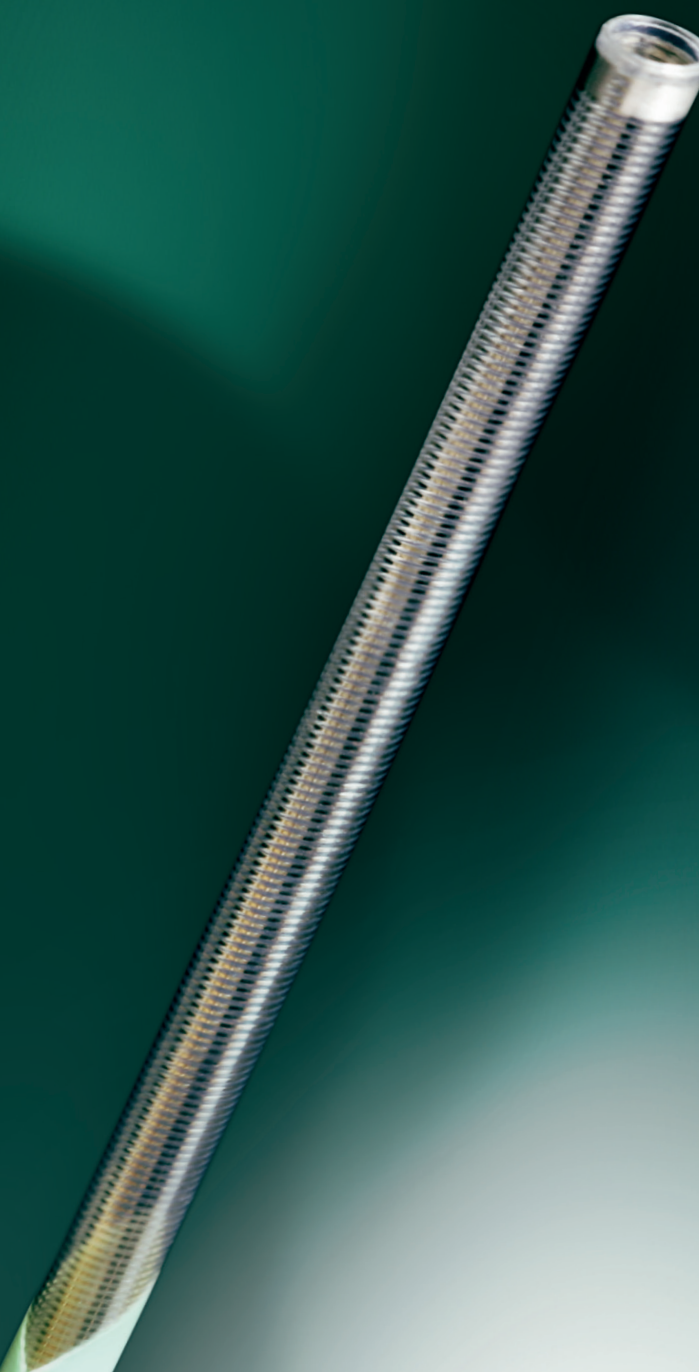
The Ballast 088 Long Sheath is indicated for the introduction of interventional devices into the peripheral, coronary, and neuro vasculature. Class III CE0297 in compliance with Medical Device Directive (MDD 93/42/EEC amended by 2007/47/EC). Manufactured by BALT USA LLC. Carefully read the instructions for use before use. Not reimbursed. First CE marking: 2018. The content of this document, in particular data, information, trademarks and logos is BALT SAS and affiliate's sole property. © 2019 BALT SAS and affiliates, all rights reserved. All representation and/or reproduction, whether in part or in full, is forbidden and would be considered a violation of BALT SAS and affiliates' copyrights and other intellectual proprietary rights. This document with associated pictures is non-contractual and is solely dedicated to healthcare professionals and BALT's distributors (BALT's supplier's distributors). It cannot be distributed or given to patients. The products commercialized by BALT shall exclusively be used in accordance with the instructions for use included in the boxes. MKTG-137 Rev. A. DC042GB (04/19)

Balt
10, rue de la Croix Vigneron, 95160 Montmorency, France
Tél. : +33 (0)1 39 89 46 41
Fax : +33 (0)1 34 17 03 46
www.balt.fr



ballast™

get there
stay there



BALLAST

LONG SHEATH

Long sheath 6F .088

Designed to provide support for rapid introduction of interventional devices into the peripheral, coronary and neuro vasculature.

large I.D. **.088"**

access treatment

get there

- Smooth navigation
Soft delivery of devices
thanks to the progressively softer
coiled distal tip & small O.D.

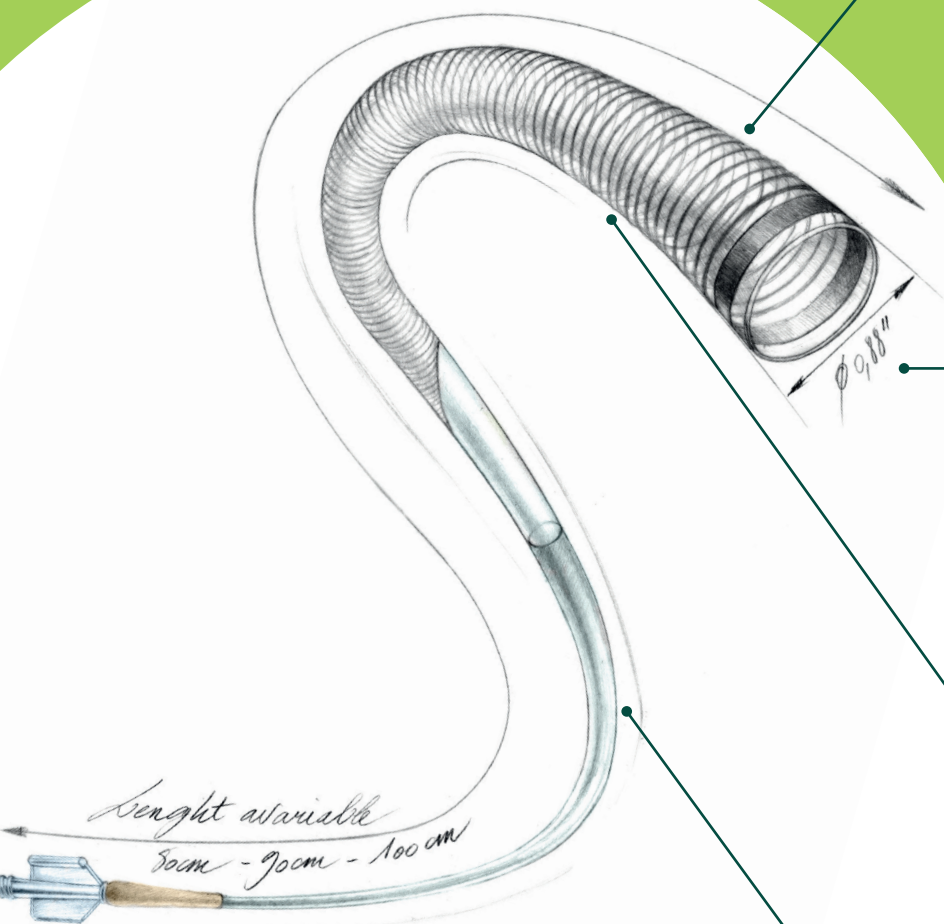
- Lubricity & trackability
enhanced by the extended hydrophilic
coating (20 cm on the distal part)

- Broad treatment options
allowed by the various lengths
and large .088" I.D.

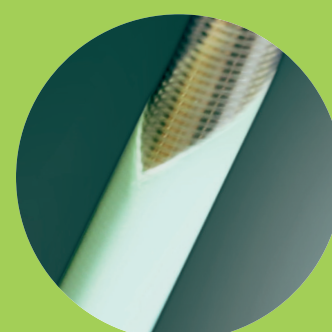
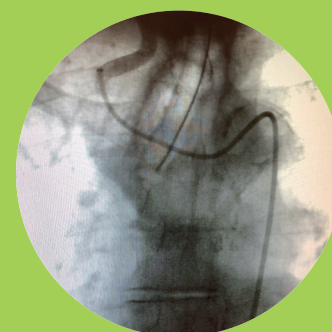
stay there

- Solid kink resistance
Supple* distal part
given by its progressively coiled
distal tip construction

- Optimal support &
pushability
High* proximal support
provided by the coiled and braided
reinforced proximal segment



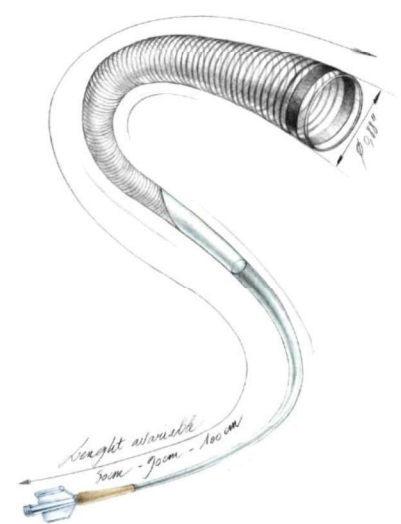
progressively softer
coiled distal tip &
small O.D.



* According to bench test
(Internal data)

Description

- The Ballast™ 088 Long Sheath is a single lumen, braid-reinforced, variable stiffness catheter.
- The Ballast 088 Long Sheath is compatible with introducer sheaths appropriately sized for the outer diameter of the Ballast 088 Long Sheath. The Sheath is available in 4 lengths: 80, 90, 100 and 105 cm.
- The Ballast™ 088 Long Sheath includes the Ballast 088 Long Sheath, Dilator, Peel-away Introducer Sheath, 9F Hemostasis Valve and 8F Hemostasis Valve Adapter.

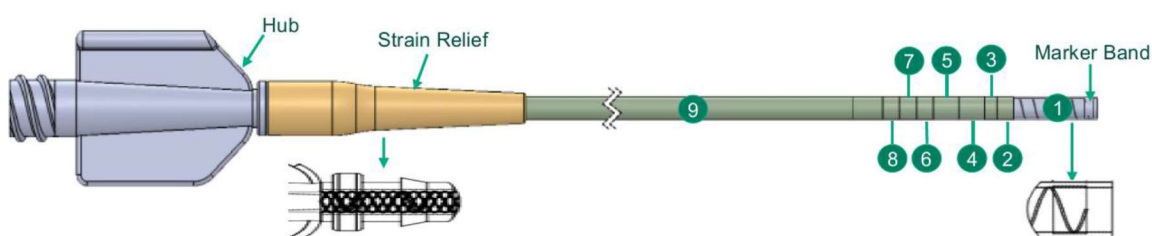


The content of this document, in particular data, information, trademarks and logos are BALT EXTRUSION SAS's sole property. Consequently, all representation and/or reproduction, whether in part or in full, is forbidden and would be considered a violation of BALT EXTRUSION SAS's copyrights and other intellectual proprietary rights ©2022 BALT EXTRUSION, all rights reserved. This document with associated pictures is non-contractual and are solely dedicated to BALT's distributors. The products commercialized by BALT EXTRUSION SAS shall exclusively be used in accordance with the package insert which have been updated and included in the boxes. The distribution, the sale and the use of BALT's products is under distributor's liability.

INTERNAL USE - CONFIDENTIAL



Design



Ballast is composed of the following main components:

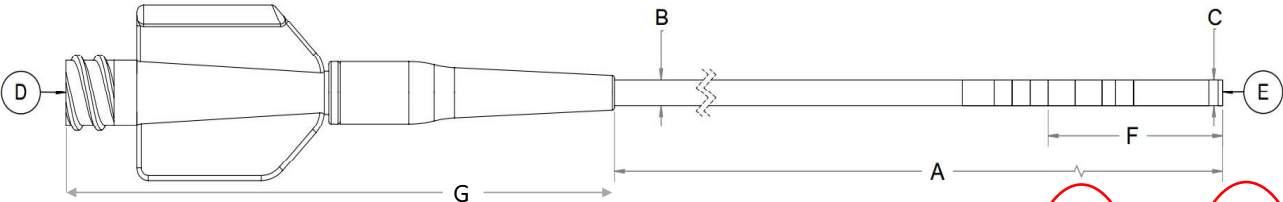
- 9 steps of suppleness along the length
- 9 cm of distal wound coil
- Distal marker band: 1mm Platinum / Iridium
- PTFE inner tubing

The content of this document, in particular data, information, trademarks and logos are BALT EXTRUSION SAS's sole property. Consequently, all representation and/or reproduction, whether in part or in full, is forbidden and would be considered a violation of BALT EXTRUSION SAS's copyrights and other intellectual proprietary rights ©2022 BALT EXTRUSION, all rights reserved. This document with associated pictures is non-contractual and are solely dedicated to BALT's distributors. The products commercialized by BALT EXTRUSION SAS shall exclusively be used in accordance with the package insert which have been updated and included in the boxes. The distribution, the sale and the use of BALT's products is under distributor's liability.

INTERNAL USE - CONFIDENTIAL



Specifications and range detail



| | A | B | C | D | E | F | G |
|-------------|---------------|-------------|---------------------------------|-------------|-----------|---------------------|------------|
| Part Number | Usable Length | Proximal OD | Distal OD | Proximal ID | Distal ID | Hydrophilic Coating | Hub length |
| BALLAST80 | 80 cm | 0.106" | 0.100" Over a length of 9 cm | 0.088" | 0.088" | 20 cm | 6 cm |
| BALLAST90 | 90 cm | | | | | | |
| BALLAST100 | 100 cm | | | | | | |
| BALLAST105 | 105 cm | | | | | | |

The content of this document, in particular data, information, trademarks and logos are BALT EXTRUSION SAS's sole property. Consequently, all representation and/or reproduction, whether in part or in full, is forbidden and would be considered a violation of BALT EXTRUSION SAS's copyrights and other intellectual proprietary rights ©2022 BALT EXTRUSION, all rights reserved. This document with associated pictures is non-contractual and are solely dedicated to BALT's distributors. The products commercialized by BALT EXTRUSION SAS shall exclusively be used in accordance with the package insert which have been updated and included in the boxes. The distribution, the sale and the use of BALT's products is under distributor's liability.

INTERNAL USE - CONFIDENTIAL





introducer sheaths (long)

ballast

| Reference | Usable length (cm) | Proximal O.D. | Distal O.D. | I.D. | Hydrophilic coating (cm) | Pack contains |
|------------|--------------------|---------------|-------------|--------|--------------------------|---|
| BALLAST80 | 80 | 0.106" | 0.100" | 0.088" | 20 | Long dilator Introducer sheath 9F Hemostasis valve 8F Hemostasis valve adapter |
| BALLAST90 | 90 | | | | | |
| BALLAST100 | 100 | | | | | |
| BALLAST105 | 105 | | | | | |

IVA

| Reference | Usable length (cm) | I.D. | Unit per box |
|--------------|--------------------|------|--------------|
| IVA3F | 7 | 3F | 10 |
| IVA3F50 | 50 | 3F | 3 |
| IVA5F45 | 45 | 5F | |
| IVA6F80 | 80 | 6F | |
| IVA6F80ST | 80 | 6F | |
| IVA6F80ST-MP | Supple Tip = 50 mm | 6F | |

