

# TRANSIT



## SELECT

## BODYSTYLES

With a choice of bodystyles, as well as exterior and interior styling options, there's a Ford Transit Van to suit your business needs.



**VAN**

**DOUBLE CAB-IN VAN**

SELECT

SERIES OVERVIEW

The Ford Transit Van range is available in three different specification levels.



**LEADER**



**E-TRANSIT LEADER**



**TREND**



**E-TRANSIT TREND**



**LIMITED**

SELECT

SERIES

# LEADER

## Key exterior features

- Halogen projector quad beam headlights with courtesy delay and daytime running lights
- Passenger's side sliding load door
- Auto Start-Stop
- Door mirrors with Blind Spot Information System (BLIS)
- Integrated rear bumper step
- Collision Mitigation System
- Cruise Control
- Lane Keeping Aid
- Speed Sign Recognition

## Key interior features

- Electrically-operated front windows with one-touch up/down
- Easy-clean rubber floor covering in cab
- Full-width DIN/ISO-compliant unglazed metal bulkhead (Van only)
- Selectable Drive Modes – Normal, Slippery and Eco (includes Tow/Haul mode with fitted tow bar) Reverse Parking Sensors
- 8" Semi-Digital Cluster
- Sync 4 12" touch screen
- Wireless Android Auto & Apple CarPlay
- Cruise Control

## Engines

### Diesel – 2.0L Ford EcoBlue

- 105 PS (77 kW)
- 130 PS (96 kW)
- 130 PS (96 kW) HDT
- 165 PS (121 kW)
- 165 PS (121 kW) HDT

## Bodystyles

- Van
- Double Cab-in-Van



SELECT

## E-TRANSIT LEADER

### Key exterior features additional to Leader

- 3-bar grille with Anodised Blue bars, chrome-finish surround and integrated charging port
- 3 Phase (Mode 3) 32 amp, 6 metre charge cable
- Electrically-operated and heated door mirrors with self colour housings
- Independent rear suspension
- Electric Windshield Defroster

### Key interior features additional to Leader

- Ford Power starter button
- 8-way auto-heated adjustable driver's seat with cushion tilt and armrest
- Electronic Automatic Temperature Control (EATC)
- 8" semi-digital cluster
- Quickclear heated windscreen
- Dual passenger seat heated
- Heated steering wheel

### Electric Drive

#### 68 kWh battery

184 PS (135 kW)  
269 PS (198 kW)

#### 89 kWh battery

184 PS (135 kW)  
269 PS (198 kW)

### Bodystyles

Van

SERIES



SELECT

SERIES

## TREND

### Key exterior features additional to Leader

- Electrically-operated heated door mirrors with self colour housings
- Halogen projector quad beam headlights with courtesy delay and LED daytime running lights
- Full wheel covers
- Front and rear parking distance sensors
- Rain-sensing front wipers
- Centre high-mounted LED downlight
- Digital rear view camera
- Front fog lights
- Electric Windshield Defroster

### Key interior features additional to Leader

- SYNC 4 12" touchscreen display with DAB radio, wireless smartphone connection, four front speakers (two woofers and two tweeters) and Emergency Assistance\*
- Cruise control with Adjustable Speed Limiter
- Premium-feel Sensico®-wrapped steering wheel
- Keyless Start
- Automatic Air Conditioner
- Thatcham Category 1 Alarm

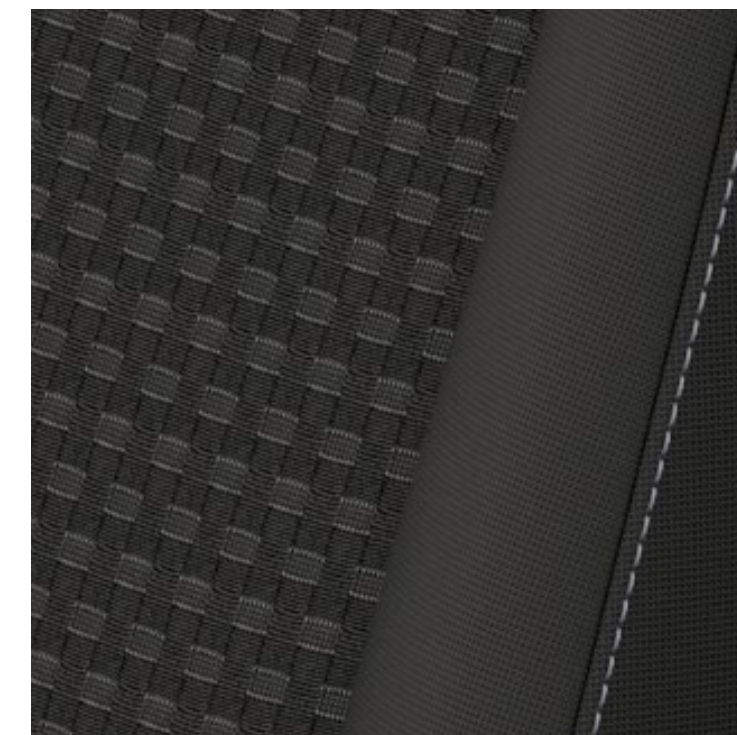
### Engines

#### Diesel – 2.0L Ford EcoBlue

- 130 PS (96 kW)
- 130 PS (96 kW) HDT
- 165 PS (121 kW)
- 165 PS (121 kW) HDT

### Bodystyles

- Van
- Double Cab-in-Van



SELECT

## E-TRANSIT TREND

### Key exterior features additional to E-Transit Leader

- Front and rear parking distance sensors
- Rain-sensing front wipers
- Front fog lights
- Full wheel covers
- Centre high-mounted LED downlight
- Digital rear view camera

### Key interior features additional to E-Transit Leader

- Cruise control with Adjustable Speed Limiter
- Lane-Keeping Alert
- Lane-Keeping Aid
- Easy to Clean Load Floor (Van only)
- Thatcham Category 1 Alarm

### Electric Drive

#### 68 kWh battery

184 PS (135 kW)  
269 PS (198 kW)

#### 89 kWh battery

184 PS (135 kW)  
269 PS (198 kW)

### Bodystyles

Van  
Double Cab-in-Van (L3 only)

SERIES



SELECT

## LIMITED

### Key exterior features additional to Trend

- Chrome-finish surround on front grille
- Body colour front bumper
- Fixed rear-view camera
- Centre high-mounted rear LED downlighter
- 6.5 x 16" Alloy Wheel
- Adaptive Cruise Control
- 360° Camera
- Dual Power Heated Signal Mirrors with Power Fold

### Key interior features additional to Trend

- Digital Rear View Mirror
- Illuminated (LED) and non-illuminated airline rail kit (Van only)
- Navigation centre
- Blind Spot Information System

### Engines

#### Diesel – 2.0L Ford EcoBlue

- 130 PS (96 kW)
- 165 PS (121 kW)
- 165 PS (121 kW) HDT

### Bodystyles

Van

SERIES



## CUSTOMISE

The Ford Transit Van offers a wide selection of solid, metallic, and premium body colours, as well as an extensive range of special vehicle option colours.

## COLOURS



**Grey Matter**  
Premium paint



**Blazer Blue**  
Solid body colour



**Agate Black**  
Metallic body colour\*



**Magnetic**  
Metallic body colour\*



**Frozen White**  
Solid body colour



**Chrome Blue**  
Metallic body colour\*



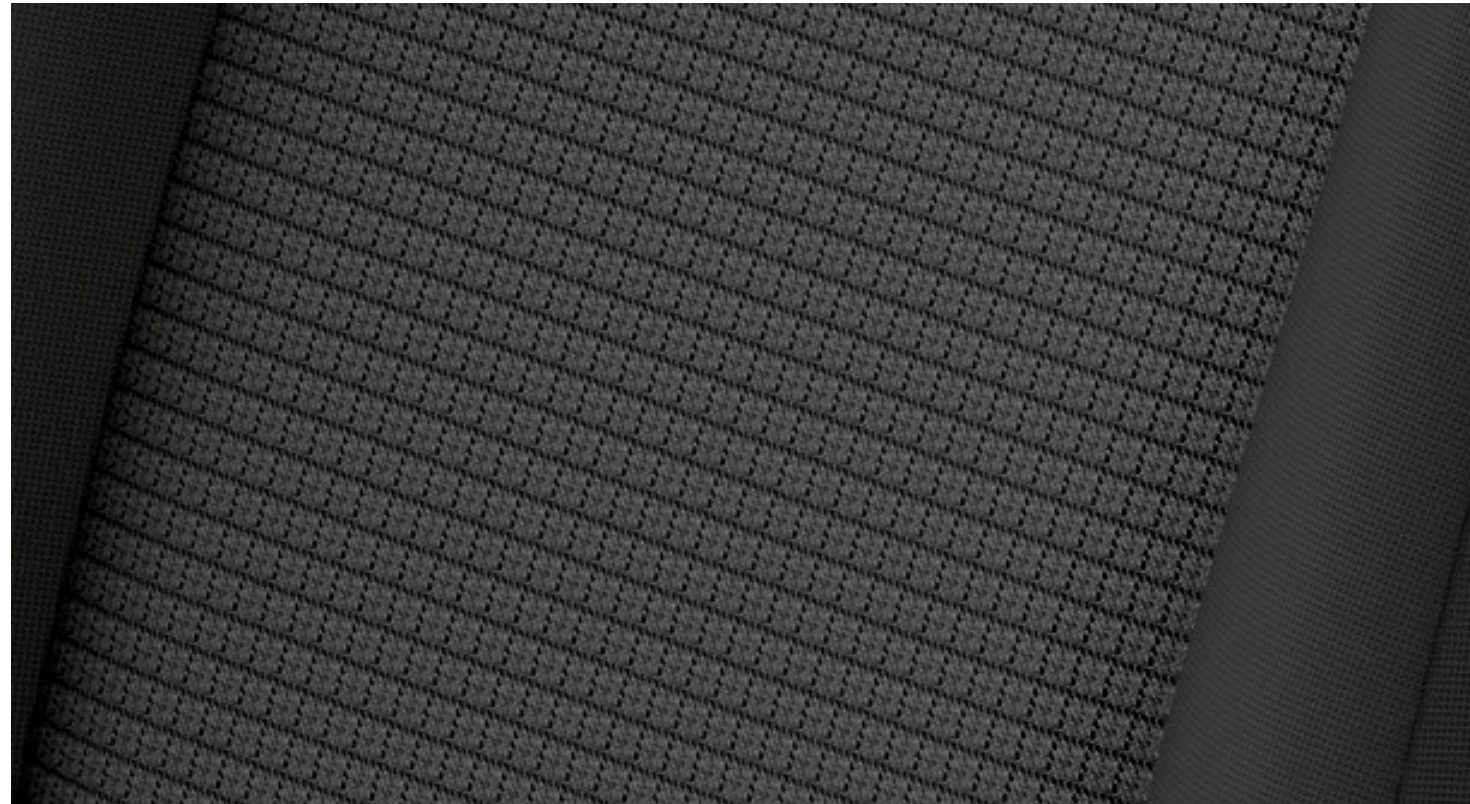
**Moondust Silver**  
Metallic body colour\*



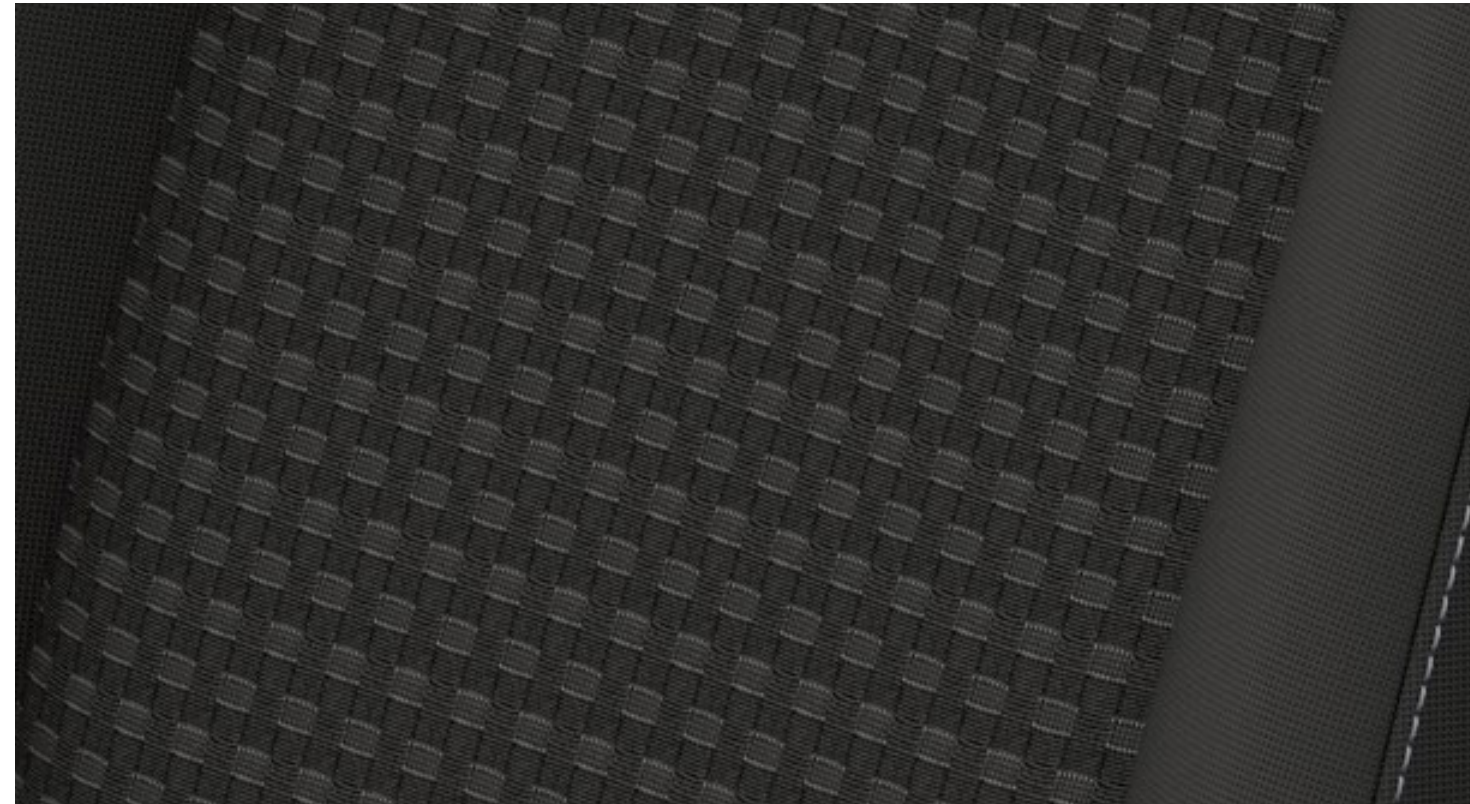
**Race Red**  
Solid body colour

**Note** The vehicle images used are to illustrate body colours only and may not reflect current specification or product availability in certain markets. Colours and trims reproduced within this publication may vary from the actual colours, due to the limitations and variety of viewing options used.

\*Optional body colour. Please speak to your Transit Centre for more details.



**Quadrant City in Dark Palazzo Grey/City in Ebony**  
Standard on Leader



**Capitol in Ebony/City in Ebony**  
Standard on Trend and Limited



**Crosshatch on Salerno in Dark Palazzo Grey/Salerno Sensico® in Ebony**  
Optional on Leader and Trend

## SPECIFICATIONS

## VAN DIMENSIONS

	L2 H2		L2 H3		L3 H2		L3 H3		L4 H3
	FWD	RWD/AWD	FWD	RWD/AWD	FWD	RWD/AWD	FWD	RWD/AWD	RWD/AWD
<b>DIMENSIONS (MM)</b>									
Overall length	5531	5531	5531	5531	5981	5981	5981	5981	6704
Overall width with mirrors	2474	2474	2474	2474	2474	2474	2474	2474	2474
Overall width with folded back mirrors	2112	2112	2112	2112	2112	2112	2112	2112	2112
Overall width without mirrors (SRW)	2059	2059	2059	2059	2059	2059	2059	2059	2059
Overall width without mirrors (DRW)	—	—	—	—	—	—	—	—	2126
Overall width without mirrors (5T DRW)	—	—	—	—	—	—	—	—	2174
Overall height* (diesel)	2413-2533	2447-2534	2652-2769	2686-2771	2411-2530	2443-2533	2650-2767	2682-2769	2680-2778
Overall height* (E-Transit)	—	2551-2559/	—	2790-2798/	—	2552-2554/	—	2773-2790/	2791-2799/
Wheelbase	3300	3300	3300	3300	3750	3750	3750	3750	3750
Front of vehicle to front wheel centre	1023	1023	1023	1023	1023	1023	1023	1023	1023
Rear of vehicle to rear wheel centre	1208	1208	1208	1208	1208	1208	1208	1208	1931
Side door entry width	1300	1300	1300	1300	1300	1300	1300	1300	1300
Side load door entry height	1700	1600	1700	1600	1700	1600	1700	1600	1600
Rear door entry width	1565	1565	1565	1565	1565	1565	1565	1565	1565
Rear door entry height	1748	1648	1987	1887	1748	1648	1987	1887	1887
Maximum loadspace length (at floor with bulkhead)	3083	3083	3083	3083	3533	3533	3533	3533	4256

## VAN DIMENSIONS

	L2 H2		L2 H3		L3 H2		L3 H3		L4 H3
	FWD	RWD/AWD	FWD	RWD/AWD	FWD	RWD/AWD	FWD	RWD/AWD	RWD/AWD
Maximum loadspace width	1784	1784	1784	1784	1784	1784	1784	1784	1784
Loadspace between wheel arches (SRW)	1392	1392	1392	1392	1392	1392	1392	1392	1392
Loadspace between wheel arches (DRW)	—	—	—	—	—	—	—	—	1154
Load floor to roof	1886	1786	2125	2025	1886	1786	2125	2025	2025
Loading height* (diesel)	482-605	615-706	482-602	615-703	478-592	608-695	478-590	608-692	608-677
Loading height* (E-Transit)	—	645-741/—	—	645-741/—	—	650-721/—	—	633-721/—	644-727/—
<b>CAPACITY (CU.M)</b>									
Maximum load volume (with bulkhead)	10.0	9.5	11.2	10.7	11.5	11.0	13.0	12.4	15.1
Loadspace (with bulkhead) (VDA)	9.3	8.3	10.3	9.9	10.8	10.2	12.0	11.5	14.1
<b>TURNING CIRCLE (M)</b>									
Kerb to kerb 16" wheels	12.74-12.83	12.74-12.83/ 12.23	12.74-12.83	12.74-12.83/ 12.23	14.25	14.3-14.33/ 13.72	14.30	14.3-14.33/ 13.72	14.3-14.33/ 13.69
Kerb to kerb 16" wheels (DRW)	—	—	—	—	—	—	—	—	13.3/—

All dimensions (shown in mm) are subject to manufacturing tolerances and refer to minimum specification models and do not include additional equipment. \*Height dimensions show the range from minimum to maximum of a fully laden, lowest payload vehicle to unladen highest payload vehicle. VDA method This is the method used by the Verband der Automobilindustrie (VDA) in Germany. A VDA figure is determined by filling the loadspace with 'litre' blocks, each measuring 200x100x50 mm. The blocks are then counted, and the numerical result is converted into cubic metres. L2 = Medium wheelbase, L3 = Long wheelbase, L4 = Long wheelbase extended length, H2 = Medium Roof, H3 = High Roof, FWD = Front-wheel drive, RWD = Rear-wheel drive, AWD = All-wheel drive, SRW = Single rear wheels, DRW = Dual rear wheels.



**L2 H2**



**L2 H3**



**L3 H2**



**L3 H3**



**L4 H3**

## SPECIFICATIONS

## DOUBLE CAB-IN-VAN DIMENSIONS

## DOUBLE CAB-IN-VAN DIMENSIONS

	L2 H2		L2 H3		L3 H2		L3 H3		L4 H3
	FWD	RWD/AWD	FWD	RWD/AWD	FWD	RWD/AWD	FWD	RWD/AWD	RWD/AWD
<b>DIMENSIONS (MM)</b>									
Overall length	5531	5531	5531	5531	5981	5981	5981	5981	6704
Overall width with mirrors	2474	2474	2474	2474	2474	2474	2474	2474	2474
Overall width with folded back mirrors	2112	2112	2112	2112	2112	2112	2112	2112	2112
Overall width without mirrors	2059	2059	2059	2059	2059	2059	2059	2059	2059
Overall height* (diesel)	2413-2533	2447-2534	2652-2769	2686-2771	2411-2530	2443-2533	2650-2767	2682-2769	2680-2778
Overall height* (E-Transit)	—	2551-2559/	—	2790-2798/	—	2552-2554/	—	2773-2790/	2791-2799/
Wheelbase	3300	3300	3300	3300	3750	3750	3750	3750	3750
Front of vehicle to front wheel centre	1023	1023	1023	1023	1023	1023	1023	1023	1023
Rear of vehicle to rear wheel centre	1208	1208	1208	1208	1208	1208	1208	1208	1931
Side door entry width	1200	1200	1200	1200	1200	1200	1200	1200	1200
Side load door entry height (diesel)	1664	1564	1664	1564	1664	1564	1664	1564	1564
Side load door entry height (E-Transit)	—	1564/—	—	1564/—	—	1600/—	—	1600/—	1564/—
Rear door entry width	1565	1565	1565	1565	1565	1565	1565	1565	1565
Rear door entry height (diesel)	1697	1597	1936	1836	1697	1597	1936	1836	1836
Maximum loadspace length (at floor with bulkhead)	2038	2038	2038	2038	2488	2488	2488	2488	3211
Maximum loadspace width	1784	1784	1784	1784	1784	1784	1784	1784	1784
Loadspace between wheel arches	1392	1392	1392	1392	1392	1392	1392	1392	1392
Load floor to roof (diesel)	1818	1718	2055	1955	1818	1718	2055	1955	1955

	L2 H2		L2 H3		L3 H2		L3 H3		L4 H3
	FWD	RWD/AWD	FWD	RWD/AWD	FWD	RWD/AWD	FWD	RWD/AWD	RWD/AWD
<b>CAPACITY (CU.M)</b>									
Load floor to roof (E-Transit)	—	1718/—	—	1955/—	—	1818/—	—	2055/—	1955/—
Loading height* (diesel)	524-643	654-740	524-640	654-736	532-640	646-740	532-637	646-736	644-728
Loading height* (E-Transit)	—	654-740/	—	654-736/	—	633-719/—	—	633-719/—	644-728/
Usable load length at 1.2m height	1789	1789	1789	1789	2239	2239	2239	2239	2962
<b>TURNING CIRCLE (M)</b>									
Kerb to kerb 16" wheels	12.74-12.83	12.74-12.83/ 12.23	12.74-12.83	12.74-12.83/ 12.23	14.25	14.3- 14.33/13.72	14.30	14.3-14.33/ 13.72	14.3-14.33/ 13.69

All dimensions (shown in mm) are subject to manufacturing tolerances and refer to minimum specification models and do not include additional equipment. \*Height dimensions show the range from minimum to maximum of a fully laden, lowest payload vehicle to unladen highest payload vehicle. VDA method This is the method used by the Verband der Automobilindustrie (VDA) in Germany. A VDA figure is determined by filling the loadspace with 'litre' blocks, each measuring 200x100x50 mm. The blocks are then counted, and the numerical result is converted into cubic metres. L2 = Medium wheelbase, L3 = Long wheelbase, L4 = Long wheelbase extended length, H2 = Medium Roof, H3 = High Roof, FWD = Front-wheel drive, RWD = Rear-wheel drive, AWD = All-wheel drive.



**L2 H2**



**L2 H3**



**L3 H2**



**L3 H3**



**L4 H3**

## SPECIFICATIONS

# GET THE MOST FROM YOUR NEW FORD

We want to help you get the most from your new Ford. And to do that, you need to know how much it is designed to safely carry, both in terms of payload and load volume. Your Transit Centre can provide professional advice on important specification aspects, and help to find the right van for your budget and business needs.

### **The Ford Transit Van is designed to carry cargo – and lots of it.**

Choosing a new van is an important decision with lots of factors to be considered. While some aspects, like selecting the most appropriate derivative, identifying the intended primary use and determining load box size are relatively simple, others, such as calculating payload are more complex.

#### **Payload capacity**

To calculate payload, you need to know two things: the vehicle's gross vehicle mass (GVM) and its kerb mass.

**GVM** is the maximum permissible weight of the vehicle when loaded and ready to go – that includes the weight of the vehicle itself, ancillaries, driver and crew (assuming the industry standard weight of 75 kg/person), fluids, fuel tank 90% full (1 litre of diesel = approximately 0.85 kg), optional and aftermarket equipment, and cargo.

For simplicity, Ford Transit models are designated according to their GVM. For example, a 280 has a GVM of c. 2,800 kg; and a 300 has a GVM of c. 3,000 kg.

**Kerb mass** is the weight of a standard-specification Leader series vehicle, including fluids and fuel tank 90% full, but without the driver, crew or cargo.

**Payload** is the difference between the two.

**Gross vehicle mass minus kerb mass = payload**

So to help you choose the right vehicle for your needs, here are some more detailed explanations about the factors that can influence a vehicle's payload. These include, but are not limited to:

#### **Driver and crew**

We calculate the weight of the driver and crew based on the industry-standard weight of 75 kg/person. Remember that the driver and crew are not included in the kerb mass figure, so when a driver or crew boards the vehicle, its payload will be reduced accordingly.

#### **Factory-fitted options**

Most factory-fitted options will affect a vehicle's payload. For example, air conditioning can add approximately 18 kg to a vehicle's weight, and therefore reduce its payload accordingly.

However, specifying a single front passenger seat in lieu of the standard dual seat will reduce the vehicle's weight by approximately 12 kg, and increase its payload by the same amount. Your Transit Centre will be able to tell you what features can add or reduce your vehicle's kerb mass and by how much.

#### **Series**

All kerb masses quoted in this brochure are for standard-specification Leader series models, unless otherwise stated. Trend and Limited series models will generally weigh more than Leader series due to the increased level of features and equipment.

#### **Manufacturing tolerances**

Variations in manufacturing and production processes mean that no two vehicles are likely to weigh exactly the same.

#### **Accessories and aftermarket conversions**

It is important to think carefully about what you add to your vehicle after you take delivery. Any accessories fitted or aftermarket conversions to the vehicle may adversely affect its payload. Please speak to your Transit Centre for more information and advice.

If payload is critical to your business, or if you plan to carry cargo at, or close to, the vehicle's maximum capacity, your Transit Centre can help. Using their specialist expertise and knowledge, they can advise you on the exact specification of vehicle required to meet your individual business needs.

#### **Configure your van to suit your job**

Ford Commercial Vehicles are available with a wide range of standard and optional features. Your Transit Centre can help you ensure that you specify the right vehicle features for your specific business needs, including technical items to aid aftermarket fitment of specialist equipment or conversion.

**Note** Technical information for vehicle converters can be found online via the Body and Equipment Mounting Manual @etis.ford.com go to >information >>vehicle conversions.

## SPECIFICATIONS

## WEIGHTS AND LOADS

	Max. gross payload (excluding driver) (kg)	Gross vehicle mass (kg)	Min. kerb mass (excluding driver) (kg)	Front axle plated mass (kg)	Rear axle plated mass (kg)
<b>VAN (3 SEATS) FWD</b>					
310 L2 H2	1027-1082	3140	2058-2113	1650-1700	1725
310 L3 H2	1028	3140	2112	1750	1725
350 L2 H2	1364-1469	3500-3550	2081-2136	1750-2000	2000-2150
350 L2 H3	1322-1427	3500-3550	2123-2178	1750-2000	2000-2150
350 L3 H2	1310-1415	3500-3550	2135-2190	1750-2000	2000-2250
350 L3 H3	1265-1370	3500-3550	2180-2235	1750-2000	2000-2250
<b>RWD</b>					
350 L2 H2	1249-1371/903*	3500-3550	2179-2540/2597*	1750-1850	2150
350 L2 H3	1207-1329/861*	3500-3550	2221-2293/2639*	1750-1850	2150
350 L3 H2	1186-1691/679-886*	3490-3995	2232-2304/2614-2821*	1750-1850	2250
350 L3 H3	1141-1646/634-841*	3490-3995	2277-2349/2359-2866*	1750-1850	2250
350 L4 H3	880-1163/524-731*	3490-3550	2387-2610/2769-2976*	1750-1850	2250
390 L2 H2*	1303	3900	2597	1850	2500
390 L2 H3*	1261	3900	2639	1850	2500
390 L3 H2*	1079-1286	3900	2614-2821	1850	2500
390 L3 H3*	1034-1241	3900	2659-2866	1850	2500
390 L4 H3*	924-1131	3900	2769-2976	1850	2500
425 L2 H2*	1478-1653	4075-4250	2597	1850	2600-2750
425 L2 H3*	1436-1611	4075-4250	2639	1850	2600-2750
425 L3 H2*	1429-1636	4075-4250	2614-2821	1850	2600-2750
425 L3 H3*	1384-1591	4075-4250	2659-2866	1850	2600-2750

## WEIGHTS AND LOADS

	Max. gross payload (excluding driver) (kg)	Gross vehicle mass (kg)	Min. kerb mass (excluding driver) (kg)	Front axle plated mass (kg)	Rear axle plated mass (kg)
<b>AWD</b>					
425 L4 H3*	1274-1481	4075-4250	2769-2976	1850	2600-2750
470 L4 H3	945-2145	3500-4700	2555	1850	2450-3300
500 L4 H3	2357-2412	5000	2588-2643	1875-2100	3300-3500
<b>AWD</b>					
350 L2 H2	1215-1265	3500-3550	2285	1850	2150
350 L2 H3	1173-1223	3500-3550	2327	1850	2150
350 L3 H2	1142-1202	3490-3550	2348	1850	2250
350 L3 H3	1097-1157	3490-3550	2393	1850	2250
350 L4 H3	1007-1057	3500-3550	2493	1850	2250

Figures apply to Medium Roof vehicles unless otherwise stated. For High Roof option vehicles, kerb mass is increased and payload reduced. Kerb mass is affected by many factors such as bodystyles, engines and options. It is the weight of a standard-specification Leader series vehicle (different series will have different kerb masses), including fluids and fuel tank 90% full, but without the driver (75 kg), crew or cargo. Payload within this guide is the difference between gross vehicle mass (GVM) and kerb mass with a further 75 kg deduction for the weight of the driver. It must be noted that actual weight will always be subject to manufacturing tolerances which may result in payload variations between this guide and actual weight. For customers intending to load vehicle close to maximum payload, we suggest you also add a margin for error of 5% of kerb mass to the kerb mass figure before calculation, to reduce risk of overloading. NB: It is the responsibility of the vehicle operator to ensure their vehicles are legally compliant for road use. Consult your Ford Commercial Vehicle Dealer for more information. \*E-Transit only. Contains figures for extended range battery which is not available until Q4 2024. **FWD** = Front-wheel drive, **RWD** = Rear-wheel drive, **AWD** = All-wheel drive, **L2** = Medium wheelbase, **L3** = Long wheelbase, **L4** = Long wheelbase extended length, **H2** = Medium Roof, **H3** = High Roof.

## SPECIFICATIONS

## WEIGHTS AND LOADS

## MAX. BRAKED TRAILER PLATE (KG)

	Max. gross payload (excluding driver) (kg)	Gross vehicle mass (kg)	Min. kerb mass (excluding driver) (kg)	Front axle plated mass (kg)	Rear axle plated mass (kg)
<b>DOUBLE CAB-IN-VAN (6 SEATS) FWD</b>					
350 L2 H2	1202-1257	3500	2298-2243	1750-2000	2150
350 L2 H3	1160-1215	3500	2285-2340	1750-2000	2150
350 L3 H2	1143-1203	3500	2297-2357	1850-2000	2000-2250
350 L3 H3	1098-1158	3500	2342-2402	1850-2000	2000-2250
<b>RWD</b>					
350 L3 H2	1029-1106	3500	2394-2471	1750	2250
350 L3 H3	1039-1061	3500	2439-2461	1750	2250
350 L4 H3	934-951	3500	2549-2566	1750	2250
390 L3 H2*	917-1144	3900	2756-2983	1850	2500
390 L3 H3*	872-1099	3900	2801-3028	1850	2500
425 L3 H2*	1267-1494	4250	2756-2983	1850	2750
425 L3 H3*	1222-1449	4250	2901-3028	1850	2750
<b>AWD</b>					
350 L3 H2	990	3500	2510	1850	2250
350 L3 H3	945	3500	2555	1850	2250

Figures apply to Medium Roof vehicles unless otherwise stated. For High Roof option vehicles, kerb mass is increased and payload reduced. Kerb mass is affected by many factors such as bodystyles, engines and options. It is the weight of a standard-specification Leader series vehicle (different series will have different kerb masses), including fluids and fuel tank 90% full, but without the driver (75 kg), crew or cargo. Payload within this guide is the difference between gross vehicle mass (GVM) and kerb mass with a further 75 kg deduction for the weight of the driver. It must be noted that actual weight will always be subject to manufacturing tolerances which may result in payload variations between this guide and actual weight. For customers intending to load vehicle close to maximum payload, we suggest you also add a margin for error of 5% of kerb mass to the kerb mass figure before calculation, to reduce risk of overloading. NB: It is the responsibility of the vehicle operator to ensure their vehicles are legally compliant for road use. Consult your Ford Commercial Vehicle Dealer for more information. \*E-Transit only. Contains figures for extended range battery which is not available until Q4 2024. **FWD** = Front-wheel drive, **RWD** = Rear-wheel drive, **AWD** = All-wheel drive, **L2** = Medium wheelbase, **L3** = Long wheelbase, **L4** = Long wheelbase extended length, **H2** = Medium Roof, **H3** = High Roof.

	Axle ratio <sup>o</sup>	Axle ratio availability	310	350	390	425	470	500
<b>VAN FWD</b>								
2.0L Ford EcoBlue 105 PS (77 kW)	4.93/3.450	<input checked="" type="checkbox"/>	2600-2650	2600-2750	—	—	—	—
2.0L Ford EcoBlue 130 PS (96 kW)	4.93/3.450	<input checked="" type="checkbox"/>	2800	2750-2800	—	—	—	—
2.0L Ford EcoBlue 130 PS (96 kW) 8-speed automatic	3.65	<input checked="" type="checkbox"/>	2800	2750-2800	—	—	—	—
2.0L Ford EcoBlue 165 PS (121 kW)	4.93/3.450	<input checked="" type="checkbox"/>	—	2750-2800	—	—	—	—
2.0L Ford EcoBlue 165 PS (121 kW) 8-speed automatic	3.65	<input checked="" type="checkbox"/>	2800	2750-2800	—	—	—	—
<b>RWD</b>								
2.0L Ford EcoBlue 105 PS (77 kW)	3.73	<input checked="" type="checkbox"/>	—	2400-2750	—	—	—	—
2.0L Ford EcoBlue 130 PS (96 kW)	4.10	<input checked="" type="checkbox"/> /□	—	2950-3000	—	—	2300-3000	—
2.0L Ford EcoBlue 130 PS (96 kW)	3.31	<input checked="" type="checkbox"/>	—	2350-2750	—	—	—	—
2.0L Ford EcoBlue 130 PS (96 kW)	3.73	<input type="checkbox"/>	—	2750-2800	—	—	—	—
2.0L Ford EcoBlue 130 PS (96 kW) Stage 6 HDT	3.73	<input checked="" type="checkbox"/>	—	2750-2800	—	—	—	—
2.0L Ford EcoBlue 165 PS (121 kW)	3.31	<input checked="" type="checkbox"/>	—	2450-2750	—	—	—	—
2.0L Ford EcoBlue 165 PS (121 kW)	3.73	<input type="checkbox"/>	—	2850-2900	—	—	—	—
2.0L Ford EcoBlue 165 PS (121 kW)	4.10	<input checked="" type="checkbox"/> /□	—	3490-3500	—	—	3500	—

**Note:** All engines are EU6.2 unless stated. GVM payload and engine combination. Maximum unbraked trailer mass is 750 kg. <sup>o</sup>The illustrated axle ratio shown is the one available dependent upon model, GVM payload and engine combination. <sup>#</sup>Not available until 2025.

# SPECIFICATIONS

## MAX. BRAKED TRAILER PLATE (KG)

	Axle ratio <sup>o</sup>	Axle ratio availability	310	350	390	425	470	500
<b>AWD</b>								
2.0L Ford EcoBlue 165 PS (121 kW) Stage 6 HDT	3.73	<input checked="" type="checkbox"/>	—	2850-2900	—	—	—	—
2.0L Ford EcoBlue 165 PS (121 kW) Stage 6 HDT 10-speed automatic	3.73	<input checked="" type="checkbox"/>	—	3490-3500	—	—	—	3500
68 kWh Electric Drive 184 PS (135 kW) 1-speed automatic standard range	Electric Drive	<input checked="" type="checkbox"/>	—	750	—	—	—	—
89 kWh Electric Drive 184 PS (135 kW) 1-speed automatic extended range <sup>#</sup>	Electric Drive	<input checked="" type="checkbox"/>	—	750	—	—	—	—
68 kWh Electric Drive 269 PS (198 kW) 1-speed automatic standard range	Electric Drive	<input checked="" type="checkbox"/>	—	750	—	—	—	—
89 kWh Electric Drive 269 PS (198 kW) 1-speed automatic extended range <sup>#</sup>	Electric Drive	<input checked="" type="checkbox"/>	—	750	—	—	—	—
<b>AWD</b>								
2.0L Ford EcoBlue 130 PS (96 kW)	4.10	<input checked="" type="checkbox"/>	—	2750-2800	—	—	—	—
2.0L Ford EcoBlue 165 PS (121 kW)	4.10	<input checked="" type="checkbox"/>	—	2750-2800	—	—	—	—
<b>DOUBLE CAB-IN-VAN FWD</b>								
2.0L Ford EcoBlue 130 PS (96 kW)	4.93/3.450	<input checked="" type="checkbox"/>	—	2600-2650	—	—	—	—
2.0L Ford EcoBlue 130 PS (96 kW) 8-speed automatic	3.65	<input checked="" type="checkbox"/>	—	2800	—	—	—	—
2.0L Ford EcoBlue 165 PS (121 kW)	4.93/3.450	<input checked="" type="checkbox"/>	—	2800	—	—	—	—
2.0L Ford EcoBlue 165 PS (121 kW) 8-speed automatic	3.65	<input checked="" type="checkbox"/>	—	2800	—	—	—	—
<b>RWD</b>								
2.0L Ford EcoBlue 130 PS (96 kW)	3.31	<input checked="" type="checkbox"/> /□	—	2300-2400	—	—	—	—
2.0L Ford EcoBlue 130 PS (96 kW)	3.73	□	—	2800	—	—	—	—
2.0L Ford EcoBlue 130 PS (96 kW)	4.10	<input checked="" type="checkbox"/> /□	—	3000	—	—	—	—
2.0L Ford EcoBlue 165 PS (121 kW)	3.31	<input checked="" type="checkbox"/> /□	—	2400-2500	—	—	—	—
2.0L Ford EcoBlue 165 PS (121 kW)	3.73	□	—	2900	—	—	—	—
2.0L Ford EcoBlue 165 PS (121 kW)	4.10	<input checked="" type="checkbox"/> /□	—	3500	—	—	—	—

## MAX. BRAKED TRAILER PLATE (KG)

	Axle ratio <sup>o</sup>	Axle ratio availability	310	350	390	425	470	500
<b>AWD</b>								
68 kWh Electric Drive 184 PS (135 kW) 1-speed automatic standard range	Electric Drive	<input checked="" type="checkbox"/>	—	—	—	—	—	—
89 kWh Electric Drive 184 PS (135 kW) 1-speed automatic extended range <sup>#</sup>	Electric Drive	<input checked="" type="checkbox"/>	—	—	—	—	—	—
68 kWh Electric Drive 269 PS (198 kW) 1-speed automatic standard range	Electric Drive	<input checked="" type="checkbox"/>	—	—	—	—	—	—
89 kWh Electric Drive 269 PS (198 kW) 1-speed automatic extended range <sup>#</sup>	Electric Drive	<input checked="" type="checkbox"/>	—	—	—	—	—	—
<b>AWD</b>								
2.0L Ford EcoBlue 130 PS (96 kW)	4.10	<input checked="" type="checkbox"/>	—	2650-2750	—	—	—	—
2.0L Ford EcoBlue 165 PS (121 kW)	4.10	<input checked="" type="checkbox"/>	—	2650-2750	—	—	—	—

**Note:** All engines are EU6.2 unless stated. GVM payload and engine combination. Maximum unbraked trailer mass is 750 kg. <sup>o</sup>The illustrated axle ratio shown is the one available dependent upon model, GVM payload and engine combination. <sup>#</sup>Not available until 2025.

## MAX. GTM (KG)\*

	Axle ratio <sup>oo</sup>		350	390	425
<b>VAN/DOUBLE CAB-IN-VAN FWD</b>					
2.0L Ford EcoBlue 130 PS (96 kW)	4.93/3.450	<input checked="" type="checkbox"/>	5700	—	—
2.0L Ford EcoBlue 130 PS (96 kW) 8-speed automatic	3.65	<input checked="" type="checkbox"/>	6000	—	—
2.0L Ford EcoBlue 165 PS (121 kW)	4.93/3.450	□	6000	—	—
2.0L Ford EcoBlue 165 PS (121 kW) 8-speed automatic	3.65	<input checked="" type="checkbox"/>	6000	—	—

**Note:** All engines are EU6.2 unless stated. <sup>oo</sup>The illustrated axle ratio shown is the one available dependent upon model, GVM payload and engine combination. \*GTM is limited to 5500 kg if fitted with rear air conditioning. Consult your Dealer for more information. <sup>#</sup>Not available until 2025.

Standard  Option at extra cost

## SPECIFICATIONS

## MAX. GTM (KG)\*

	Axle ratio <sup>00</sup>		350	390	425
<b>RWD</b>					
2.0L Ford EcoBlue 130 PS (96 kW)	3.31	■	5550	—	—
2.0L Ford EcoBlue 130 PS (96 kW)	3.73	□	6100	—	—
2.0L Ford EcoBlue 130 PS (96 kW)	4.10	■/□	6500	—	—
2.0L Ford EcoBlue 165 PS (121 kW)	3.31	■	5650	—	—
2.0L Ford EcoBlue 165 PS (121 kW)	3.73	■	6390-6400	—	—
2.0L Ford EcoBlue 165 PS (121 kW)	4.10	□	6980-7000	—	—
68 kWh Electric Drive 184 PS (135 kW) 1-speed automatic standard range	Electric Drive	■	4250	—	—
89 kWh Electric Drive 184 PS (135 kW) 1-speed automatic extended range <sup>#</sup>	Electric Drive	■	4250	—	—
68 kWh Electric Drive 269 PS (198 kW) 1-speed automatic standard range	Electric Drive	■	4250	—	—
89 kWh Electric Drive 269 PS (198 kW) 1-speed automatic extended range <sup>#</sup>	Electric Drive	■	4250	—	—
<b>AWD</b>					
2.0L Ford EcoBlue 130 PS (96 kW)	4.10	■	6000	—	—
2.0L Ford EcoBlue 165 PS (121 kW)	4.10	■	6000	—	—

**Note:** All engines are EU6.2 unless stated. <sup>00</sup>The illustrated axle ratio shown is the one available dependent upon model, GVM payload and engine combination. \*GTM is limited to 5500 kg if fitted with rear air conditioning. Consult your Dealer for more information. <sup>#</sup>Not available until 2025.

## FUEL ECONOMY AND CO<sub>2</sub> EMISSIONS (EU6.2)

	Axle ratio <sup>00</sup>	CO <sub>2</sub> emissions (g/km) <sup>000</sup>	Combined (L/100 km) <sup>000</sup>
<b>VAN/DOUBLE CAB-IN-VAN FWD</b>			
2.0L Ford EcoBlue 105 PS (77 kW)	4.93/3.450	210-219	8.0-8.4
2.0L Ford EcoBlue 130 PS (96 kW)	4.93/3.450	215-230	8.2-8.8
2.0L Ford EcoBlue 130 PS (96 kW) 8-speed automatic	3.65	226-237	8.6-9.1
2.0L Ford EcoBlue 130 PS (96 kW) Stage 6 HDT 8-speed automatic	3.65	n/a	n/a
2.0L Ford EcoBlue 165 PS (121 kW) Stage 6 HDT 8-speed automatic	3.65	n/a	n/a
2.0L Ford EcoBlue 165 PS (121 kW)	4.93/3.450	217-230	8.3-8.8
2.0L Ford EcoBlue 165 PS (121 kW) 8-speed automatic	3.65	226-237	8.6-9.1
<b>RWD</b>			
2.0L Ford EcoBlue 105 PS (77 kW)	3.73	226-236	8.6-9.0
2.0L Ford EcoBlue 130 PS (96 kW)	3.31	234-253	8.9-9.7
2.0L Ford EcoBlue 130 PS (96 kW)	3.73	234-257	8.9-9.8
2.0L Ford EcoBlue 130 PS (96 kW)	4.10	254-255	9.7
2.0L Ford EcoBlue 130 PS (96 kW) Stage 6 HDT	3.73	274	10.4
2.0L Ford EcoBlue 165 PS (121 kW)	3.31	234-258	8.9-9.8
2.0L Ford EcoBlue 165 PS (121 kW)	3.73	234-262	8.9-10.0
2.0L Ford EcoBlue 165 PS (121 kW)	4.10	254-255	9.7
2.0L Ford EcoBlue 165 PS (121 kW) Stage 6 HDT	4.10	270	10.4
2.0L Ford EcoBlue 165 PS (121 kW) Stage 6 HDT	3.73	n/a	n/a
2.0L Ford EcoBlue 165 PS (121 kW) 10-speed automatic	3.73	282	10.7

**Note for all Ford EcoBlue engines:** Values shown illustrate vehicles fitted with Auto Start-Stop. Auto Start-Stop system reduces CO<sub>2</sub> emissions and fuel consumption by 6 g/km and between 0.2-0.3L/100km respectively. <sup>00</sup>The illustrated axle ratio shown is the one available dependent upon model, GVM payload and engine/transmission combination. <sup>000</sup>The declared fuel/energy consumptions, CO<sub>2</sub>-emissions and electric ranges are determined according to the technical requirements and specifications of the European Regulations (EC) 715/2007 and (EU) 2017/1151 as last amended. Light Duty vehicles type-approved using the Worldwide Harmonised Light Vehicle Test Procedure (WLTP) will have fuel/energy consumptions and CO<sub>2</sub>-emission information for New European Drive Cycle (NEDC) and WLTP. WLTP will fully replace the NEDC latest by end of the year 2020. The applied standard test procedures enable comparison between different vehicle types and different manufacturers. In addition to the fuel efficiency of a vehicle, driving behaviour as well as other non-technical factors play a role in determining a vehicle's fuel/energy consumption, CO<sub>2</sub> emissions and electric ranges. CO<sub>2</sub> is the main greenhouse gas responsible for global warming. A guide on fuel economy and CO<sub>2</sub> emissions which contains data for all new passenger carrying vehicle models is available at any point of sale free of charge. For further information see <https://www.ford.co.uk/vans-and-pickups/transit/van>

■ Standard □ Option at extra cost

## SPECIFICATIONS

## FUEL ECONOMY AND CO<sub>2</sub> EMISSIONS (EU6.2)

	Axle ratio <sup>000</sup>	CO <sub>2</sub> emissions (g/km) <sup>000</sup>	Combined (L/100 km) <sup>000</sup>
<b>AWD</b>			
2.0L Ford EcoBlue 130 PS (96 kW)	4.10	263-280	10.0-10.7
2.0L Ford EcoBlue 165 PS (125 kW)	4.10	263-287	10.0-10.9

**Note for all Ford EcoBlue engines:** Values shown illustrate vehicles fitted with Auto Start-Stop. Auto Start-Stop system reduces CO<sub>2</sub> emissions and fuel consumption by 6 g/km and between 0.2-0.3L/100km respectively. <sup>000</sup>The illustrated axle ratio shown is the one available dependent upon model, GVM payload and engine/transmission combination. <sup>000</sup>The declared fuel/energy consumptions, CO<sub>2</sub>-emissions and electric ranges are determined according to the technical requirements and specifications of the European Regulations (EC) 715/2007 and (EU) 2017/1151 as last amended. Light Duty vehicles type-approved using the Worldwide Harmonised Light Vehicle Test Procedure (WLTP) will have fuel/energy consumptions and CO<sub>2</sub>-emission information for New European Drive Cycle (NEDC) and WLTP. WLTP will fully replace the NEDC latest by end of the year 2020. The applied standard test procedures enable comparison between different vehicle types and different manufacturers. In addition to the fuel efficiency of a vehicle, driving behaviour as well as other non-technical factors play a role in determining a vehicle's fuel/energy consumption, CO<sub>2</sub> emissions and electric ranges. CO<sub>2</sub> is the main greenhouse gas responsible for global warming. A guide on fuel economy and CO<sub>2</sub> emissions which contains data for all new passenger carrying vehicle models is available at any point of sale free of charge. For further information see <https://www.ford.co.uk/vans-and-pickups/transit/van>

## E-TRANSIT CHARGE\*

	Standard range	Enhanced range <sup>#</sup>
<b>CHARGE OPTIONS 0-100% CHARGE (MAX. HRS)</b>		
230 V outlet with Ford Universal Charge Cable	8	6
<b>CHARGE OPTIONS 10-80% CHARGE (MINS)</b>		
High-powered 115 kW DC charging**	37	—
High-powered 180 kW DC charging**	—	28
<b>CHARGE RANGE (MILES)</b>		
Range added in 10 mins	34	72

\*All E-Transit variants are rear-wheel drive vehicles with Zero Evaporative Emissions. \*\*Achieved using high-power charging. Time dependent on charging conditions, battery temperature and size as well as ambient temperature at point of use. **Note** The charging rate decreases as battery reaches full capacity. Your results may vary based on peak charging times and battery state of charge. <sup>#</sup>Not available until Q4 2024.

## E-TRANSIT POWER\*

	Standard Range			Enhanced Range <sup>#</sup>		
	350	390	425	350	390	425
<b>CONSUMPTION/EMISSIONS ACCORDING TO WLTP</b>						
CO <sub>2</sub> emissions (g/km)	0	0	0	0	0	0
Electricity consumption kWh/100 km <sup>0</sup>	30.1-33.0	26.0-28.4/ 27.3-28.7 <sup>##</sup>	26.6-28.9/ 27.8-29.2 <sup>##</sup>	29.7-32.0	25.5-27.2/ 26.3-27.6 <sup>##</sup>	25.9-27.7/ 26.8-28.0 <sup>##</sup>
System power (kWh)	135/198	135/198	135/198	135/198	135/198	135/198
System power (PS)	184/269	184/269	184/269	184/269	184/269	184/269
Battery capacity in kWh usable	68	68	68	89	89	89
Torque (Nm) <sup>000</sup>	430	430	430	430	430	430
Transmission	1-speed automatic	1-speed automatic	1-speed automatic	1-speed automatic	1-speed automatic	1-speed automatic
Drive	RWD	RWD	RWD	RWD	RWD	RWD
Axle ratio	Electric Drive	Electric Drive	Electric Drive	Electric Drive	Electric Drive	Electric Drive
Battery type	Li-ion, single pack	Li-ion, single pack	Li-ion, single pack	Li-ion, single pack	Li-ion, single pack	Li-ion, single pack
Max. range (miles) <sup>000</sup>	149-161	182-196/ 180-188 <sup>##</sup>	178-193/ 176-185 <sup>##</sup>	198-212	234-249/ 230-241 <sup>##</sup>	230-244/ 227-237 <sup>##</sup>

\*Figures show range between all available lengths and heights of E-Transit for each GVM. <sup>0</sup>The declared fuel/energy consumptions, CO<sub>2</sub>-emissions and electric ranges are determined according to the technical requirements and specifications of the European Regulations (EC) 715/2007 and (EU) 2017/1151 as last amended. Light Duty vehicles type-approved using the Worldwide Harmonised Light Vehicle Test Procedure (WLTP) will have fuel/energy consumptions and CO<sub>2</sub>-emission information for New European Drive Cycle (NEDC) and WLTP. WLTP will fully replace the NEDC latest by end of the year 2020. The applied standard test procedures enable comparison between different vehicle types and different manufacturers. In addition to the fuel efficiency of a vehicle, driving behaviour as well as other non-technical factors play a role in determining a vehicle's fuel/energy consumption, CO<sub>2</sub> emissions and electric ranges. CO<sub>2</sub> is the main greenhouse gas responsible for global warming. A guide on fuel economy and CO<sub>2</sub> emissions which contains data for all new passenger carrying vehicle models is available at any point of sale free of charge or can be downloaded under "Placeholder for web link". For further information see "Placeholder for national regulation". <sup>000</sup>Calculated via peak performance of the electric motor(s) at peak battery power. Your results may vary. <sup>000</sup>Based on full charge. Estimated range using Worldwide Harmonised Light Vehicle Test Procedure (WLTP). Actual range varies with conditions such as external elements, driving behaviours, vehicle maintenance, and lithium-ion battery age. **Note** The charging rate decreases as battery reaches full capacity. Your results may vary based on peak charging times and battery state of charge. <sup>#</sup>Not available until Q4 2024. 4P data is calculated, note tested. <sup>##</sup>Double Cab-in-Van figures.

# SPECIFICATIONS

# MODEL AVAILABILITY

	310 L2 H2	310 L3 H2	350 L2 H2	350 L2 H3	350 L3 H2	350 L3 H3	350 L4 H3	390 L2 H2	390 L2 H3	390 L3 H2	390 L3 H3	390 L4 H3	425 L2 H2	425 L2 H3	425 L3 H2	425 L3 H3	425 L4 H3	470 L4 H3	500 L4 H3
<b>VAN FWD</b>																			
2.0L Ford EcoBlue 105 PS (77 kW)	■	■	■	■	■	■	—	—	—	—	—	—	—	—	—	—	—	—	—
2.0L Ford EcoBlue 130 PS (96 kW)	■	■	■	■	■	■	—	—	—	—	—	—	—	—	—	—	—	—	—
2.0L Ford EcoBlue 130 PS (96 kW) 8-speed automatic	■	—	■	■	■	■	—	—	—	—	—	—	—	—	—	—	—	—	—
2.0L TDCi Ford EcoBlue 130 PS (96 kW) Stage 6 HDT 8-speed automatic	—	—	—	—	■	■	—	—	—	—	—	—	—	—	—	—	—	—	—
2.0L Ford EcoBlue 165 PS (121 kW)	—	—	■	■	■	■	—	—	—	—	—	—	—	—	—	—	—	—	—
2.0L Ford EcoBlue 165 PS (121 kW) 8-speed automatic	■	■	■	■	■	■	—	—	—	—	—	—	—	—	—	—	—	—	—
<b>RWD</b>																			
2.0L Ford EcoBlue 105 PS (77 kW)	—	—	—	—	■	■	■	—	—	—	—	—	—	—	—	—	—	—	—
2.0L Ford EcoBlue 130 PS (96 kW)	—	—	■	■	■	■	■	—	—	—	—	—	—	—	—	—	—	■	—
2.0L Ford EcoBlue 165 PS (121 kW)	—	—	■	■	■	■	■	—	—	—	—	—	—	—	—	—	—	■	—
2.0L Ford EcoBlue 165 PS (121 kW) Stage 6 HDT 10-speed automatic	—	—	—	—	■	■	■	—	—	—	—	—	—	—	—	—	—	—	■
68 kWh Electric Drive 184 PS (135 kW) 1-speed automatic standard range	—	—	■	■	■	■	■	■	■	■	■	■	■	■	■	■	■	—	—
89 kWh Electric Drive 184 PS (135 kW) 1-speed automatic enhanced range#	—	—	—	—	■	■	■	—	—	■	■	■	—	—	■	■	■	—	—
68 kWh Electric Drive 269 PS (198 kW) 1-speed automatic standard range	—	—	■	■	■	■	■	■	■	■	■	■	■	■	■	■	■	—	—
89 kWh Electric Drive 269 PS (198 kW) 1-speed automatic enhanced range#	—	—	—	—	■	■	■	—	—	■	■	■	—	—	■	■	■	—	—
<b>AWD</b>																			
2.0L Ford EcoBlue 130 PS (96 kW)	—	—	■	■	■	■	■	—	—	—	—	—	—	—	—	—	—	—	—
2.0L Ford EcoBlue 165 PS (121 kW)	—	—	■	■	■	■	■	—	—	—	—	—	—	—	—	—	—	—	—
<b>DOUBLE CAB-IN-VAN FWD</b>																			
2.0L Ford EcoBlue 130 PS (96 kW)	—	—	■	■	■	■	—	—	—	—	—	—	—	—	—	—	—	—	—
2.0L Ford EcoBlue 130 PS (96 kW) 8-speed automatic	—	—	■	■	■	■	—	—	—	—	—	—	—	—	—	—	—	—	—
2.0L Ford EcoBlue 165 PS (121 kW)	—	—	—	—	■	■	—	—	—	—	—	—	—	—	—	—	—	—	—
2.0L Ford EcoBlue 165 PS (121 kW) 8-speed automatic	—	—	■	■	■	■	—	—	—	—	—	—	—	—	—	—	—	—	—

L2 = Medium wheelbase, L3 = Long wheelbase, L4 = Long wheelbase enhanced length, H2 = Medium Roof, H3 = High Roof, FWD = Front-wheel drive, RWD = Rear-wheel drive, AWD = All-wheel drive. All engines are EU6.2 with 6-speed manual transmission unless stated. #Not available until 2025.

■ Standard □ Option at extra cost

# SPECIFICATIONS

# MODEL AVAILABILITY

	310 L2 H2	310 L3 H2	350 L2 H2	350 L2 H3	350 L3 H2	350 L3 H3	350 L4 H3	390 L2 H2	390 L2 H3	390 L3 H2	390 L3 H3	390 L4 H3	425 L2 H2	425 L2 H3	425 L3 H2	425 L3 H3	425 L4 H3	470 L4 H3	500 L4 H3
<b>RWD</b>																			
2.0L Ford EcoBlue 130 PS (96 kW)	—	—	—	—	■	■	■	—	—	—	—	—	—	—	—	—	—	—	—
2.0L Ford EcoBlue 165 PS (121 kW)	—	—	—	—	■	■	—	—	—	—	—	—	—	—	—	—	—	—	—
68 kWh Electric Drive 184 PS (135 kW) 1-speed automatic standard range	—	—	—	—	—	—	—	—	—	■	■	—	—	—	■	■	—	—	—
89 kWh Electric Drive 184 PS (135 kW) 1-speed automatic enhanced range*	—	—	—	—	—	—	—	—	—	■	■	—	—	—	■	■	—	—	—
68 kWh Electric Drive 269 PS (198 kW) 1-speed automatic standard range	—	—	—	—	—	—	—	—	—	■	■	—	—	—	■	■	—	—	—
89 kWh Electric Drive 269 PS (198 kW) 1-speed automatic enhanced range*	—	—	—	—	—	—	—	—	—	■	■	—	—	—	■	■	—	—	—
<b>AWD</b>																			
2.0L Ford EcoBlue 130 PS (96 kW)	—	—	—	—	■	■	—	—	—	—	—	—	—	—	—	—	—	—	—
2.0L Ford EcoBlue 165 PS (121 kW)	—	—	—	—	■	■	—	—	—	—	—	—	—	—	—	—	—	—	—

L2 = Medium wheelbase, L3 = Long wheelbase, L4 = Long wheelbase enhanced length, H2 = Medium Roof, H3 = High Roof, FWD = Front-wheel drive, RWD = Rear-wheel drive, AWD = All-wheel drive. All engines are EU6.2 with 6-speed manual transmission unless stated. \*Not available until 2025.

■ Standard □ Option at extra cost

## SPECIFICATIONS

## STYLING AND APPEARANCE

	Leader	Trend	Limited
<b>WHEELS</b>			
Steel – 16"x6", dual rear wheels, hub caps on front wheels (fitted with 195/75 R16 BSW tyres)* (standard 470 series only, optional on diesel L4 350 RWD series only)	<input checked="" type="checkbox"/> /○	<input checked="" type="checkbox"/> /○	—
Steel – 16"x6", dual rear wheels, hub caps on front wheels (fitted with 205/75 R16C LI 113/111 BSW tyres)* (500 series only)	<input checked="" type="checkbox"/>	<input checked="" type="checkbox"/>	<input checked="" type="checkbox"/>
Steel – 16"x6½" (fitted with 235/65 R16C BSW tyres for 350 series, 215/65 R16C 109 T BSW tyres for 310 series)* (N1 only)	<input checked="" type="checkbox"/>	<input checked="" type="checkbox"/>	—
Steel – 16"x6½" (fitted with 235/65 R16C 121/119 R BSW tyres) (N2 E-Transit only)	—	<input checked="" type="checkbox"/>	—
Alloy – 16"x6½", 5-spoke (fitted with 215/65 R16C BSW tyres for 310 series, P235/65 R16C BSW tyres for 350 series, and 235/65 R16C 121/119 R BSW tyres for 390 and 425 series)* (not available with diesel N2, optional for Trend N1 and E-Transit)	—	<input type="checkbox"/>	<input checked="" type="checkbox"/>
Wheel covers – Half caps (standard only on diesel models for Leader series) (SRW only)	<input checked="" type="checkbox"/>	—	—
Wheel covers – Full (standard only on E-Transit models for Leader series) (SRW only)	<input checked="" type="checkbox"/> /○	<input checked="" type="checkbox"/>	—
Spare – Full-size steel with tool kit (Included with dual rear wheels)	<input type="checkbox"/> /○	<input type="checkbox"/> /○	<input type="checkbox"/> /○
Locking wheel nuts	—	<input checked="" type="checkbox"/>	<input checked="" type="checkbox"/>
Tyre inflator kit	<input checked="" type="checkbox"/>	<input checked="" type="checkbox"/>	<input checked="" type="checkbox"/>
<b>DESIGN FEATURES</b>			
Body – H2 (Medium Roof) (not available on L4)	<input checked="" type="checkbox"/>	<input checked="" type="checkbox"/>	<input checked="" type="checkbox"/>
Body – H3 (High Roof) (standard on L4 only)	<input checked="" type="checkbox"/> /○	<input checked="" type="checkbox"/> /○	<input checked="" type="checkbox"/> /○
Door mirrors – Blind spot eliminator and integrated side indicator	<input checked="" type="checkbox"/>	<input checked="" type="checkbox"/>	<input checked="" type="checkbox"/>
Door mirrors – Manual adjust (N1 diesel only)	<input checked="" type="checkbox"/>	—	—
Door mirrors – Power-foldable (N1 diesel only)	<input type="checkbox"/>	—	—
Door mirrors – Electrically-operated and heated (N1 and 390 and 425 E-Transit models only)	<input type="checkbox"/> /○	<input checked="" type="checkbox"/>	—
Door mirrors – Power-foldable, electrically-operated and heated (Standard on N2 diesel only for Leader and Trend)	<input type="checkbox"/> /○	<input type="checkbox"/> /○	<input checked="" type="checkbox"/>
Bodyside mouldings – Wide, self colour	<input checked="" type="checkbox"/>	<input checked="" type="checkbox"/>	<input checked="" type="checkbox"/>
Front bumper – Body colour upper, self colour lower	<input checked="" type="checkbox"/>	<input checked="" type="checkbox"/>	—
Front bumper – Body colour upper, body colour lower	—	—	<input checked="" type="checkbox"/>
Rear bumper – Self colour with integrated step	<input checked="" type="checkbox"/>	<input checked="" type="checkbox"/>	<input checked="" type="checkbox"/>
Door handles – Self colour	<input checked="" type="checkbox"/>	<input checked="" type="checkbox"/>	<input checked="" type="checkbox"/>
Cargo door handle – Self colour	<input checked="" type="checkbox"/>	<input checked="" type="checkbox"/>	<input checked="" type="checkbox"/>
Front grille – Self colour (diesel only)	<input checked="" type="checkbox"/>	<input checked="" type="checkbox"/>	—

## STYLING AND APPEARANCE

	Leader	Trend	Limited
<b>PAINT</b>			
Front grille – Self colour with chrome surround and Anodised Blue bars (E-Transit only)	<input checked="" type="checkbox"/>	<input checked="" type="checkbox"/>	—
Front grille – Self colour with chrome surround	—	—	<input checked="" type="checkbox"/>
Tinted glass – Complete	<input checked="" type="checkbox"/>	<input checked="" type="checkbox"/>	<input checked="" type="checkbox"/>
Rear privacy glass (not available for Double Cab-in-Van)	<input type="checkbox"/>	<input type="checkbox"/>	<input type="checkbox"/>
Mudflaps – Front	<input type="checkbox"/>	<input type="checkbox"/>	<input type="checkbox"/>
Mudflaps – Rear	<input checked="" type="checkbox"/>	<input checked="" type="checkbox"/>	<input checked="" type="checkbox"/>
<b>OPTION PACKS</b>			
CV-Specific 1 Marketing Flex Pack: – Complete rear trim full-height board – Easy to Clean Load Floor – Extended range single fuel tank (RWD only) – LED loadspace compartment lights (diesel Van only)	<input type="checkbox"/>	<input type="checkbox"/>	<input type="checkbox"/>
Driver Assistance Package: – Cruise control – Pre-Collision Assist <sup>1)</sup> (with Pedestrian Detection) – Lane-Keeping Aid <sup>2)</sup> – Speed Sign Recognition – Rear Parking Sensors – 12" touchscreen display with Ford SYNC 4, DAB radio, 5G embedded modem and wireless smartphone connection (N1 only)	<input checked="" type="checkbox"/>	—	—
Driver Assistance Package 2: – Cruise control – Pre-Collision Assist <sup>1)</sup> (with Pedestrian Detection) – Lane-Keeping Aid <sup>2)</sup> and Lane-Keeping Alert <sup>2)</sup> – Speed Sign Recognition – Front and Rear Parking Sensors – Front fog lights – Rear centre high-mounted LED downlighter with digital rear-view camera – 12" touchscreen display with Ford SYNC 4, DAB radio, 5G embedded modem and wireless smartphone connection (N1 only)	<input type="checkbox"/>	<input checked="" type="checkbox"/>	—

\*The wheel you choose will be fitted with the tyre size noted, but no choice of tyre brand is available. <sup>1)</sup>Safety feature, <sup>2)</sup>Driver Assistance feature. **N1** = Vehicles up to 350 GVM, **N2** = Vehicles over 350 GVM, **L2** = Medium wheelbase, **L3** = Long wheelbase, **L4** = Long wheelbase extended length, **RWD** = Rear-wheel drive, **SRW** = Single rear wheels.

Standard  Option at extra cost  Part of an option pack, at extra cost.

## SPECIFICATIONS

## STYLING AND APPEARANCE

	Leader	Trend	Limited
<b>Driver Assistance Package 6:</b> – Adaptive Cruise Control – Pre-Collision Assist with Intersection Assist <sup>1)</sup> – Lane-Keeping Aid <sup>2)</sup> and Lane-Keeping Alert <sup>2)</sup> (requires manual transmission) – Lane-Centring Assist (requires automatic transmission) – Predictive Speed Assist – Front and Rear Parking Sensors – Side Park Aid (includes outer front and rear parking sensors) – Front fog lights – Rear centre high-mounted LED downlighter – 360-degree camera – Reverse Brake Assist <sup>1)</sup> – Blind Spot Information System with Cross Traffic Alert and Trailer Coverage – Clear Exit Assist <sup>1)</sup> – Power-foldable, electrically-operated and heated door mirrors – 12" touchscreen display with Ford SYNC 4, DAB radio, 5G embedded modem, wireless smartphone connection and embedded navigation (standard for N2 Leader and Trend only)	<input checked="" type="checkbox"/> / <input type="checkbox"/>	<input checked="" type="checkbox"/> / <input type="checkbox"/>	<input type="checkbox"/>

\*The wheel you choose will be fitted with the tyre size noted, but no choice of tyre brand is available. <sup>1)</sup>Safety feature, <sup>2)</sup>Driver Assistance feature. **N1** = Vehicles up to 350 GVM, **N2** = Vehicles over 350 GVM, **L2** = Medium wheelbase, **L3** = Long wheelbase, **L4** = Long wheelbase extended length, **RWD** = Rear-wheel drive, **SRW** = Single rear wheels.

## DRIVING EXPERIENCE

	Leader	Trend	Limited
<b>DRIVER ASSISTANCE</b>			
Cruise control (including Adjustable Speed Limiter) (N1 only)	<input type="checkbox"/>	<input type="checkbox"/>	—
Adaptive Cruise Control (ACC) (standard on Leader and Trend N2 series)	<input checked="" type="checkbox"/> / <input checked="" type="checkbox"/>	<input checked="" type="checkbox"/> / <input checked="" type="checkbox"/>	<input type="checkbox"/>
Blind Spot Information System with Cross Traffic Alert and Trailer Coverage (includes trailer tow functionality if specified with trailer tow attachments) (standard on N2 Leader and Trend only)	<input checked="" type="checkbox"/> / <input checked="" type="checkbox"/>	<input checked="" type="checkbox"/> / <input checked="" type="checkbox"/>	<input type="checkbox"/>
Lane-Keeping Aid <sup>2)</sup> (N1 only)	<input type="checkbox"/>	<input type="checkbox"/>	—
Lane-Keeping Aid and Lane-Keeping Alert <sup>2)</sup> (standard on N2 Leader and Trend only) (requires manual transmission)	<input checked="" type="checkbox"/> / <input checked="" type="checkbox"/>	<input checked="" type="checkbox"/> / <input checked="" type="checkbox"/>	<input type="checkbox"/>
Lane-Keeping Aid, Lane-Keeping Alert and Lane-Centering Assist <sup>2)</sup> (standard on N2 Leader and Trend only) (requires automatic transmission)	<input checked="" type="checkbox"/> / <input checked="" type="checkbox"/>	<input checked="" type="checkbox"/> / <input checked="" type="checkbox"/>	<input type="checkbox"/>
Pre-Collision Assist <sup>1)</sup> (with Pedestrian Detection) (N1 only)	<input type="checkbox"/>	<input type="checkbox"/>	—
Pre-Collision Assist with Intersection Assist <sup>1)</sup> (standard on N2 Leader and Trend only)	<input checked="" type="checkbox"/> / <input checked="" type="checkbox"/>	<input checked="" type="checkbox"/> / <input checked="" type="checkbox"/>	<input type="checkbox"/>
Speed Sign Recognition (N1 only)	<input type="checkbox"/>	<input type="checkbox"/>	—
Predictive Speed Assist (standard on N2 Leader and Trend only)	<input checked="" type="checkbox"/> / <input checked="" type="checkbox"/>	<input checked="" type="checkbox"/> / <input checked="" type="checkbox"/>	<input type="checkbox"/>
Intelligent Speed Assist <sup>2)</sup>	<input type="checkbox"/>	<input type="checkbox"/>	<input type="checkbox"/>
Acceleration Control	<input type="checkbox"/>	<input type="checkbox"/>	<input type="checkbox"/>
Wrong Way Alert <sup>2)</sup>	<input type="checkbox"/>	<input type="checkbox"/>	<input type="checkbox"/>
Digital rear-view camera (N1 only)	<input checked="" type="checkbox"/>	<input type="checkbox"/>	—
360-degree camera (front, side and rear) (standard on Leader and Trend N2 only)	<input checked="" type="checkbox"/> / <input checked="" type="checkbox"/>	<input checked="" type="checkbox"/> / <input checked="" type="checkbox"/>	<input type="checkbox"/>
Front Parking Sensor(s) (standard on N2 Leader)	<input checked="" type="checkbox"/> / <input checked="" type="checkbox"/>	<input type="checkbox"/>	<input type="checkbox"/>
Rear Parking Sensor(s)	<input type="checkbox"/>	<input type="checkbox"/>	<input type="checkbox"/>
Side Park Aid (includes outer front and rear parking sensors) (Standard on Leader and Trend N2 only)	<input checked="" type="checkbox"/> / <input checked="" type="checkbox"/>	<input checked="" type="checkbox"/> / <input checked="" type="checkbox"/>	<input type="checkbox"/>
Speed Limiter – 90 km/h (56 mph) (standard on N2, optional on N1. Not available on E-Transit)	<input checked="" type="checkbox"/> / <input type="checkbox"/>	<input checked="" type="checkbox"/> / <input type="checkbox"/>	<input checked="" type="checkbox"/> / <input type="checkbox"/>
Speed Limiter – 100 km/h (62 mph) (not available on N2 or E-Transit)	<input type="checkbox"/>	<input type="checkbox"/>	<input type="checkbox"/>
Speed Limiter – 110 km/h (70 mph) (not available on N2 or E-Transit)	<input type="checkbox"/>	<input type="checkbox"/>	<input type="checkbox"/>
Speed Limiter – 120 km/h (75 mph) (not available on N2 or E-Transit)	<input type="checkbox"/>	<input type="checkbox"/>	<input type="checkbox"/>
Trailer Sway Control (TSC) <sup>1)</sup> (activated with Ford trailer tow attachments) (not available with E-Transit, L4 350 Double-cab-in-Van)	<input type="checkbox"/>	<input type="checkbox"/>	<input type="checkbox"/>

**N1** = Vehicles up to 350 GVM, **N2** = Vehicles over 350 GVM, **L4** = Long wheelbase extended length, **RWD** = Rear-wheel drive, **DRW** = Dual rear wheels. <sup>1)</sup>Safety feature, <sup>2)</sup>Driver Assistance feature.

Standard
  Option at extra cost
  Part of an option pack, at extra cost.

## SPECIFICATIONS

## DRIVING EXPERIENCE

## PERFORMANCE AND EFFICIENCY

	Leader	Trend	Limited
<b>EXTERIOR LIGHTING</b>			
Headlights – Bulb daytime running lights	<input checked="" type="checkbox"/>	–	–
Headlights – LED daytime running lights	<input checked="" type="checkbox"/>	<input checked="" type="checkbox"/>	<input checked="" type="checkbox"/>
Headlights – Halogen projector headlights with daytime running lights	<input checked="" type="checkbox"/>	<input checked="" type="checkbox"/>	–
Headlights – Static cornering	<input type="checkbox"/>	<input type="checkbox"/>	<input checked="" type="checkbox"/>
Headlights – Bi-xenon headlights with LED daytime running lights	<input type="checkbox"/>	<input type="checkbox"/>	<input checked="" type="checkbox"/>
Headlights – Quad beam	<input checked="" type="checkbox"/>	<input checked="" type="checkbox"/>	–
Headlights – Automatic on/off	<input checked="" type="checkbox"/>	<input checked="" type="checkbox"/>	<input checked="" type="checkbox"/>
Headlights – Courtesy delay, 30 seconds duration	<input checked="" type="checkbox"/>	<input checked="" type="checkbox"/>	<input checked="" type="checkbox"/>
Downlighting – Centre high-mounted LED (standard on N2 Leader only)	<input checked="" type="checkbox"/>	<input checked="" type="checkbox"/>	<input checked="" type="checkbox"/>
Fog lights – Front (standard on N2 Leader only)	<input checked="" type="checkbox"/>	<input checked="" type="checkbox"/>	<input checked="" type="checkbox"/>
Fog lights – Rear	<input checked="" type="checkbox"/>	<input checked="" type="checkbox"/>	<input checked="" type="checkbox"/>
Roof marker lights (DRW only)	<input checked="" type="checkbox"/>	<input checked="" type="checkbox"/>	<input checked="" type="checkbox"/>
Side marker lights (L4 models only)	<input checked="" type="checkbox"/>	<input checked="" type="checkbox"/>	<input checked="" type="checkbox"/>
<b>SUSPENSION</b>			
Front, independent MacPherson struts, linear rate coil springs, stabiliser bar, gas-pressurised shock absorbers and rear leaf springs	<input checked="" type="checkbox"/>	<input checked="" type="checkbox"/>	<input checked="" type="checkbox"/>
<b>INSTRUMENTS AND CONTROLS</b>			
Tyre Pressure Monitoring System (TPMS) <sup>1)</sup>	<input checked="" type="checkbox"/>	<input checked="" type="checkbox"/>	<input checked="" type="checkbox"/>
Tachograph – Digital, electronic, 24-hour (standard on N2 only)	<input checked="" type="checkbox"/>	<input checked="" type="checkbox"/>	<input checked="" type="checkbox"/>
<b>TECHNOLOGY</b>			
Selectable drive modes – Normal, Slippery and Eco (includes Tow/Haul mode for RWD models with fitted tow bar)	<input checked="" type="checkbox"/>	<input checked="" type="checkbox"/>	<input checked="" type="checkbox"/>
Reverse Gear Alarm	<input type="checkbox"/>	<input type="checkbox"/>	<input type="checkbox"/>

N1 = Vehicles up to 350 GVM, N2 = Vehicles over 350 GVM, L4 = Long wheelbase extended length, RWD = Rear-wheel drive, DRW = Dual rear wheels. <sup>1)</sup>Safety feature, <sup>2)</sup>Driver Assistance feature.

	Leader	Trend	Limited
<b>INSTRUMENTS AND CONTROLS</b>			
Battery – Cold start (-20°C) (not available with E-Transit)	<input checked="" type="checkbox"/>	<input checked="" type="checkbox"/>	<input checked="" type="checkbox"/>
Battery – Twin Improved Flooded (IF), cold start (-29°C) (not available with E-Transit)	<input type="checkbox"/>	<input type="checkbox"/>	<input type="checkbox"/>
Ford Power starter button (standard on E-Transit Leader)	<input checked="" type="checkbox"/>	<input checked="" type="checkbox"/>	<input checked="" type="checkbox"/>
Ford KeyFree System with Ford Power starter button (not available with dual side load doors)	<input type="checkbox"/>	<input type="checkbox"/>	<input type="checkbox"/>
<b>TECHNOLOGY</b>			
Water in fuel filter with sensor (not available with E-Transit)	<input checked="" type="checkbox"/>	<input checked="" type="checkbox"/>	<input checked="" type="checkbox"/>
RPM Speed Controller	<input type="checkbox"/>	<input type="checkbox"/>	–

Standard  Option at extra cost  Part of an option pack, at extra cost.

## SPECIFICATIONS

## COMFORT AND CONVENIENCE

	Leader	Trend	Limited
<b>INTERIOR CONVENIENCE</b>			
Assist handle – Located on B-pillar (Van only)	■	■	■
Bottle holder – Twin, 2-litre bottle capacity, facia-mounted	■	■	■
Glovebox – With lid and A4 file storage capability	■	—	—
Glovebox – Lockable, with lid and A4 file storage capability	—	■	■
AUX 2-DIN instrument panel console	□	□	□
Overhead console	■	■	■
Driver's sunglasses holder	—	■	■
Power point socket – 2 x 12 V (located on instrument panel and in stowage bin)	■	■	■
Power point socket – 230 V (400 W) power converter (not available with 500 series)	□	□	□
Power point socket – 12 V (located in rear)	□	□	□
Digital Rear View Mirror	□	□	■
Console Ashtray	□	□	□
Storage – Front door map pockets	■	■	■
Storage – Underseat stowage compartment (under dual passenger seat)	■	■	■
<b>AUDIO AND COMMUNICATION SYSTEMS</b>			
12" touchscreen display with Ford SYNC 4, DAB radio, 5G embedded modem and wireless smartphone connection	■	■	■
Embedded navigation (standard for N2 Leader and Trend vehicles only)	■/□	■/□	■
Four front speakers (two woofers and two tweeters) (Van and Double Cab-in-Van only)	■	■	■
Emergency Assistance*	■	■	■
Roof mounted fin antenna	■	■	■
<b>CLIMATE CONTROL</b>			
Air conditioning – Front, Electronic Automatic Temperature Control (EATC) (standard on E-Transit Leader)	■/□	■	■
Air conditioning – Rear, including front air conditioning (not available on E-Transit)	—	□	□
Heater – Recirculation (Van and Double Cab-in-Van only, not available on E-Transit)	■	■	■
Heater – Positive Temperature Coefficient (PTC) (available on Van Leader and Trend diesel, DCiV Trend diesel)	■	■	■

## COMFORT AND CONVENIENCE

	Leader	Trend	Limited
<b>INTERIOR LIGHTING</b>			
Courtesy lights – Header-mounted, front with theatre dimming	■	—	—
Courtesy lights – Header-mounted, front with theatre dimming and map-reading lights	—	■	■
Courtesy lights – Rear seat, with theatre dimming (Double Cab-in-Van only)	■	■	■
Courtesy lights – Footwell illumination (side load door only)	—	■	—
Loadspace compartment lights	■	■	■
Loadspace compartment lights – LED (Van and Double Cab-in-Van only)	□/□	□/□	□/□
Illuminated (LED) and non-illuminated airline rail kit (Van only) (not available with interior roof rack)	□	□	□
Configurable interior lighting/battery saver – 10 minutes	■	■	■
Configurable interior lighting/battery saver – 30 minutes	□/□	□/□	□/□
<b>SEATING</b>			
Driver's seat – Manual 4-way (fore/aft, recline, height and tilt) (not available on E-Transit)	■	□	—
Driver's seat – Manual 4-way (fore/aft; recline; height; and tilt) with lumbar adjust and armrest (not available on E-Transit4)	—	■	■
Driver's seat – Manual 4-way auto-heated (fore/aft; recline; height; and tilt) with lumbar adjust and armrest (standard on E-Transit only)	■/□	■/□	□
Driver's seat – Power 10-way auto-heated (fore/aft; recline; height; and tilt) with lumbar adjust and armrest	—	□	□
Front passenger's seat – Single, manual 2-way (fore/aft) (not available on E-Transit)	□	□	□
Front passenger's seat – Single, manual 8-way auto-heated (fore/aft; recline; height; and tilt)	□	—	—
Front passenger's seat – Single, manual 8-way auto-heated (fore/aft; recline; height; and tilt) with lumbar adjust and armrest	—	□	□
Front passenger's seat – Dual, fixed back with split lift-up seat cushion for stowage (not available on E-Transit)	■	■	■
Front passenger's seat – Dual, auto-heated, fixed back with split lift-up seat cushion for stowage (standard on E-Transit)	■/□	■/□	□
Rear Seat Pack 1, Double Cab-in-Van – Second row; quad seats (2+2) (L3 350 variant only)	□	□	□
Rear Seat Pack 2, Double Cab-in-Van – Second row; triple wide seats	■	■	■

\*Ford Emergency Assistance is an innovative SYNC feature that uses a Bluetooth®-paired and connected mobile phone to help vehicle occupants initiate a call to the local Communications Centre, following a vehicle crash event involving an airbag deployment or fuel pump shut off. The feature operates in more than 40 European countries and regions. N1 = Vehicles up to 350 GVM, N2 = Vehicles over 350 GVM, FWD = Front-wheel drive, RWD = Rear-wheel drive, AWD = All-wheel drive, DRW = Dual rear wheels, L2 = Medium wheelbase, L3 = Long wheelbase.

■ Standard □ Option at extra cost ■/□ Part of an option pack, at extra cost.

## SPECIFICATIONS

## COMFORT AND CONVENIENCE

	Leader	Trend	Limited
<b>INSTRUMENTS AND CONTROLS</b>			
Hydraulic power-assisted steering (HPAS) (only available with AWD, not available on EU6.2 engine variants)	■	■	■
Electric power-assisted steering (EPAS) (standard on EU6.2 engine 2WD variants and all HDT6 engines)	■	■	■
Steering column – Rake- and reach-adjustable	■	■	■
Wipers – Front, rain-sensing	■	■	■
Wipers – Rear with auto reverse wipe and electric wash (only available with optional glazed rear doors for Van and Double Cab-in-Van)	■/□	■/□	■/□
Steering wheel – 4-spoke, polyurethane	■	—	—
Steering wheel – 4-spoke, Premium-feel Sensico®-wrapped	—	■	■
Steering wheel – Heated (standard on E-Transit only)	■/□	■/□	□
Steering wheel – Paddle shifters (8-speed automatic transmission only)	■/□	■/□	■/□
Gearshift knob – Polyurethane	■	■	—
Gearshift knob – Leather-trimmed	—	—	■
Rotary gear shift dial (E-Transit, or vehicles with 8-speed automatic transmission only)	■	■	■
Electronic parking brake (not available with DRW)	■	■	■
8" semi-digital cluster	■	■	■
Windows – Electrically-operated front with one-touch lowering on driver's side	■	■	■

## COMFORT AND CONVENIENCE

	Leader	Trend	Limited
<b>TECHNOLOGY</b>			
EV Charging Cable (additional information: 3-phase; 6 m) (E-Transit only)	■	■	—
EV Charging Cable (additional information: 3-phase; 12.5 m) (E-Transit only)	□	□	—
Single fuel tank – 70 litres (EU6.2 FWD) (EU6.2 RWD is 75 litres) (not available with E-Transit)	■	■	■
Extended range single fuel tank – 95 litres (E-Transit)	□	□	□
Ford Easy Fuel capless refuelling system with misfuel inhibit (not available with E-Transit)	■	■	■
Ford Easy Fuel cap – Non-locking fuel cap (not available with E-Transit)	□	□	□
AdBlue® aftertreatment system – 24 litre (not available with E-Transit)	■	■	■
Auto Start-Stop system (not available with E-Transit)	■	■	■
Pro Power Onboard (E-Transit only) – 2.3 kW Exportable Power (not available in conjunction with the following optional accessories: Simple wooden load floor, Multi-functional wooden load floor, Express Delivery Van Pack/Load Compartment System 1, Load Retention Rail Pack, Cargo Management System 2, Loadspace divider net, and Cargo tie down rings)	□	□	—
Quickclear heated windscreen (standard for Leader E-Transit and Leader N2 vehicles only)	■/□	■	■

\*Ford Emergency Assistance is an innovative SYNC feature that uses a Bluetooth®-paired and connected mobile phone to help vehicle occupants initiate a call to the local Communications Centre, following a vehicle crash event involving an airbag deployment or fuel pump shut off. The feature operates in more than 40 European countries and regions. **N1** = Vehicles up to 350 GVM, **N2** = Vehicles over 350 GVM, **FWD** = Front-wheel drive, **RWD** = Rear-wheel drive, **AWD** = All-wheel drive, **DRW** = Dual rear wheels, **L2** = Medium wheelbase, **L3** = Long wheelbase.

■ Standard □ Option at extra cost ■/□ Part of an option pack, at extra cost.

## SPECIFICATIONS

## UTILITY

	Leader	Trend	Limited
<b>BODY</b>			
Doors – Passenger’s side load (sliding) door	<input checked="" type="checkbox"/>	<input checked="" type="checkbox"/>	<input checked="" type="checkbox"/>
Doors – Dual side load (sliding) doors (not available on either L2 310 series or L4 350 series Double Cab-in-Van)	<input type="checkbox"/>	<input type="checkbox"/>	<input type="checkbox"/>
Power step – Passenger’s side load door (RWD 350 diesel Van models only)	<input type="checkbox"/>	<input type="checkbox"/>	<input type="checkbox"/>
Doors – Unglazed rear doors, hinged for 180° opening, positive stop at 90° (L2 and L3 models only)	<input checked="" type="checkbox"/>	<input checked="" type="checkbox"/>	<input checked="" type="checkbox"/>
Doors – Unglazed rear doors, hinged for widest opening up to magnetic door retainers (not available on L2 models, optional on L3 models and standard on L4)	<input checked="" type="checkbox"/> /○	<input checked="" type="checkbox"/> /○	<input checked="" type="checkbox"/> /○
Doors, rear – Glazed and heated	<input type="checkbox"/>	<input type="checkbox"/>	<input type="checkbox"/>
Side windows, Van – Second row driver and passenger’s side, fixed	<input type="checkbox"/>	<input type="checkbox"/>	<input type="checkbox"/>
Side windows, Double Cab-in-Van – Second row, fixed	<input type="checkbox"/>	—	—
Side windows, Double Cab-in-Van – Second row, sliding	<input checked="" type="checkbox"/>	<input checked="" type="checkbox"/>	<input checked="" type="checkbox"/>
<b>CARPET AND TRIM</b>			
Floor covering – Cab, easy-clean rubber (Van only)	<input checked="" type="checkbox"/>	<input checked="" type="checkbox"/>	<input checked="" type="checkbox"/>
Floor covering – Full-length, easy-clean rubber (Double Cab-in-Van only)	<input checked="" type="checkbox"/>	<input checked="" type="checkbox"/>	<input checked="" type="checkbox"/>
Headlining – Cab, moulded (standard on Van only)	<input checked="" type="checkbox"/> /○	<input checked="" type="checkbox"/> /○	<input checked="" type="checkbox"/> /○
Headlining – Extended, moulded (Double Cab-in-Van only)	<input checked="" type="checkbox"/>	<input checked="" type="checkbox"/>	<input checked="" type="checkbox"/>
Side and rear door panelling trim (standard on Double Cab-in-Van only)	<input checked="" type="checkbox"/> /○	<input checked="" type="checkbox"/> /○	<input checked="" type="checkbox"/> /○
<b>CERTIFICATION</b>			
Vehicle Identification Number – Visible	<input checked="" type="checkbox"/>	<input checked="" type="checkbox"/>	<input checked="" type="checkbox"/>
<b>CHASSIS</b>			
Non-limited slip differential front axle	<input checked="" type="checkbox"/>	<input checked="" type="checkbox"/>	<input checked="" type="checkbox"/>
<b>EXTERIOR FUNCTIONAL</b>			
Trailer tow attachment with Trailer Sway Control (TSC) <sup>1)</sup> and 13-pin electrics (tachograph may be required) (not available with E-Transit 390 or 425)	<input type="checkbox"/>	<input type="checkbox"/>	<input type="checkbox"/>
Trailer tow electrics	<input type="checkbox"/>	<input type="checkbox"/>	<input type="checkbox"/>
Rear ladder (only available with 180° hinged rear doors) (not available with High Roof (H3))	<input type="checkbox"/>	<input type="checkbox"/>	<input type="checkbox"/>

## UTILITY

	Leader	Trend	Limited
<b>LOAD COMPARTMENT</b>			
Bulkhead – Full-width polymer moulded, unglazed (Van only)	<input type="checkbox"/>	<input type="checkbox"/>	<input type="checkbox"/>
Bulkhead – Full-width polymer moulded with window (Van only)	<input type="checkbox"/>	<input type="checkbox"/>	<input type="checkbox"/>
Bulkhead – Full-width metal, unglazed (Van only)	<input checked="" type="checkbox"/>	<input checked="" type="checkbox"/>	<input checked="" type="checkbox"/>
Bulkhead – Full-width metal with window (Van only)	<input type="checkbox"/>	<input type="checkbox"/>	<input type="checkbox"/>
Bulkhead – Moulded with window (Double Cab-in-Van only)	<input checked="" type="checkbox"/>	<input checked="" type="checkbox"/>	<input checked="" type="checkbox"/>
Complete rear sidewall trim half-height board with wheel arch covers (standard on Double Cab-in-Van) (optional on Van)	<input checked="" type="checkbox"/> /○	<input checked="" type="checkbox"/> /○	<input checked="" type="checkbox"/> /○
Complete rear trim full-height board with wheel arch covers (Van only)	<input checked="" type="checkbox"/> /○	<input checked="" type="checkbox"/> /○	<input checked="" type="checkbox"/> /○
Easy to Clean Load Floor (Van only) (standard on E-Transit Trend only)	<input type="checkbox"/>	<input checked="" type="checkbox"/> /○	<input type="checkbox"/>
Load area protection kit – Complete rear trim full-height board, Easy to Clean Load Floor and load compartment tie down loops (not available with rear compartment heater) (Van only)	<input type="checkbox"/>	<input type="checkbox"/>	<input type="checkbox"/>
Load compartment – DIN 75410 compliant tie down loops	<input checked="" type="checkbox"/> /○	<input checked="" type="checkbox"/> /○	<input checked="" type="checkbox"/> /○
Load Retention Rail Pack (interior racking) – Racks and Bins plus Half Freight (requires Load Floor Kit) (Van only)	<input type="checkbox"/>	<input type="checkbox"/>	<input type="checkbox"/>
Loadspace divider net (requires Side Rails) (Van only)	<input type="checkbox"/>	<input type="checkbox"/>	<input type="checkbox"/>
Rear door Cargo Net Kit	<input type="checkbox"/>	<input type="checkbox"/>	<input type="checkbox"/>
Multi-functional wooden load floor (includes driver’s side load door if not already specified) (not available with dual rear wheels) (Van only)	<input type="checkbox"/>	<input type="checkbox"/>	<input type="checkbox"/>
Simple wooden load floor (not available with dual rear wheels) (Van only)	<input type="checkbox"/>	<input type="checkbox"/>	<input type="checkbox"/>
Cargo Management System 1 – Cargo net (requires single side load door) (contains full bulkhead steel-fixed/unglazed and partial headliner) (Van only)	<input type="checkbox"/>	<input type="checkbox"/>	<input type="checkbox"/>
Foldable Shelf System (Van only)	<input type="checkbox"/>	<input type="checkbox"/>	<input type="checkbox"/>
Interior roof rack (Van only) (High Roof (H3) only)	<input type="checkbox"/>	<input type="checkbox"/>	<input type="checkbox"/>
Cargo tie down rings (Van only)	<input type="checkbox"/>	<input type="checkbox"/>	<input type="checkbox"/>
Gearshift Indicator light	<input checked="" type="checkbox"/>	<input checked="" type="checkbox"/>	<input checked="" type="checkbox"/>

N1 = Vehicles up to 350 GVM, RWD = Rear-wheel drive, L2 = Medium wheelbase, L3 = Long wheelbase, L4 = Long wheelbase extended length. <sup>1)</sup>Safety Feature.

Standard  Option at extra cost  Part of an option pack, at extra cost.

# FORD ACCESSORIES

## ELECTRIFICATION

	Partnumber	Double Cab in Van	
		Double Cab in Van	Van
<b>ELECTRIFICATION</b>			
EV Charging Cable for public charging stations	2 493 189	↗	↗
EV Charging Cable for public charging stations, length: 12.5 m, 32 A, 3-phase	2 612 267	↗	↗
Charging Cable Bag black	2 495 739	↗	↗
High Power Travel Connector for UK and Ireland	2 513 265	↗	↗
High Power Travel Connector for Europe, except UK, Ireland and Norway	2 511 829	↗	↗
High Power Travel Connector for Norway	2 513 266	↗	↗

## OUTDOOR LIFESTYLE

	Partnumber	Double Cab in Van	
		Double Cab in Van	Van
<b>OUTDOOR LIFESTYLE</b>			
ARB* Cargo Organizer large	2 616 000	↗	↗
ARB* Camping Chair with carry bag, black and beige	2 615 988	↗	↗
ARB* Camping Table with carry bag, aluminium	2 615 990	↗	↗
ARB* Jump Starter with power pack, portable, 12v	2 618 911	↗	↗

## TRANSPORTATION

	Partnumber	Double Cab in Van	
		Double Cab in Van	Van
<b>TOW BARS</b>			
Brink®* Fixed Tow Bar	Various	↗	↗
JAEGER automotive GmbH* Electrical Kit for Tow Bar 13 pin connector	Various	↗	↗
<b>REAR TRANSPORTATION</b>			
Mottez* Ski & Snowboard Carrier tow bar mounted	2 483 279	↗	↗

Please note that this overview does not show the complete range of products available. For further accessories and more information please visit [www.ford-accessories.co.uk](http://www.ford-accessories.co.uk).

\*The identified accessories are carefully selected third party supplier branded accessories and may have different warranty conditions, the details of which can be obtained from your Ford Dealer.

↗ Available — Not available

# FORD ACCESSORIES

## TRANSPORTATION

	Part number	Double Cab in Van	Van
<b>ROOF TRANSPORTATION</b>			
Rear Ladder	Various	↗	↗
Q-Top® (Q-Tech)* Roof Gallery	Various	↗	↗
Q-Top® (Q-Tech)* Get-Up Telescopic Ladder with 6 steps	2 582 973	↗	↗
Q-Top® (Q-Tech)* Ladder Roller for Q-Top® (Q-Tech) roof gallery	1 913 405	↗	↗
Q-Top® (Q-Tech)* Storage Bracket for get-up telescopic ladder	2 582 975	↗	↗
Q-Top® (Q-Tech)* Ladder Stop Set for roof gallery, universal	1 913 407	↗	↗
Q-Top® (Q-Tech)* Roof Base Carrier with single roof crossbar	2 539 259	↗	↗
Q-Top® (Q-Tech)* Roof Base Carrier with set of 2 roof crossbars	2 539 261	↗	↗
Q-Top® (Q-Tech)* Roof Base Carrier with set of 3 roof crossbars	2 539 263	↗	↗
Thule®* Roof Box	Various	↗	↗
Thule®* Roof Ski Carrier	Various	↗	↗
Thule®* Roof Kayak Carrier	2 527 029	↗	↗
Thule®* Roof Bike Carrier	Various	↗	↗
G3* Roof Box	Various	↗	↗

## TRANSPORTATION

	Part number	Double Cab in Van	Van
<b>INTERIOR TRANSPORTATION SYSTEMS</b>			
Airline Roof Rail Kit	Various	↗	↗
Overhead Racking System	1 877 186	—	↗
Block Bar kit	2 507 939	↗	↗
Cargo Net verticle partition	2 490 751	↗	↗
Cargo Net	Various	—	↗
Cargo Securing Pack in box	2 439 040	—	↗
Cargo Tie Down Rings blue	2 499 839	↗	↗
Umbrella Holder	1 524 823	↗	↗
4pets®* Caree Transport Box	2 460 886	↗	↗
<b>LOAD COMPARTMENT ACCESSORIES</b>			
Assist Handle for right hand side b-pillar	Various	↗	↗
Assist Handle for right hand side d-pillar	Various	↗	↗
RIVAL* Assist Handle Bracket Kit	Various	↗	↗
Foldable Transport Box	2 470 827	↗	↗
Foldable Organizer Box	2 470 825	↗	↗

Please note that this overview does not show the complete range of products available. For further accessories and more information please visit [www.ford-accessories.co.uk](http://www.ford-accessories.co.uk).

\*The identified accessories are carefully selected third party supplier branded accessories and may have different warranty conditions, the details of which can be obtained from your Ford Dealer.

↗ Available — Not available

# FORD ACCESSORIES

## PROTECTION

	Partnumber	Double Cab in Van	Van
<b>INTERIOR PROTECTION</b>			
Rubber Floor Mats front, black, manual transmission	Various	↙	↙
HDD* Seat Cover for dual passenger seat, black	Various	↙	↙
<b>EXTERIOR PROTECTION</b>			
Rear Window Protection Guard for cargo doors	1838135	↙	↙
K&K* Marten Repellent	Various	↙	↙

## SAFETY & SECURITY

	Partnumber	Double Cab in Van	Van
<b>SAFETY PRODUCTS</b>			
Brigade®* Reverse Warning Device	Various	↙	↙

## SAFETY & SECURITY

	Partnumber	Double Cab in Van	Van
<b>ROADSIDE ASSISTANCE</b>			
Lifehammer* Window Cleaner All-Season XXL, with extendable handle	2471674	↙	↙
Lifehammer* Life Hammer Evolution, automatic	2471504	↙	↙
First Aid Kit	Various	↙	↙
Premium Safety Pack	2311429	↙	↙
Kalff* First Aid Kit	Various	↙	↙
Kalff* Premium Safety Pack	Various	↙	↙
<b>CHILD SAFETY</b>			
Britax Römer® Child Seat	Various	↙	↙

## COMFORT

	Partnumber	Double Cab in Van	Van
<b>COMFORT PRODUCTS</b>			
Digital Rear View Mirror	Various	↙	↙
Wiring Harness Digital Rear View Mirror	Various	↙	↙

Please note that this overview does not show the complete range of products available. For further accessories and more information please visit [www.ford-accessories.co.uk](http://www.ford-accessories.co.uk).

\*The identified accessories are carefully selected third party supplier branded accessories and may have different warranty conditions, the details of which can be obtained from your Ford Dealer.

↙ Available — Not available

# FORD ACCESSORIES

## COMFORT

	Partnumber	Double Cab in Van	
		Double Cab in Van	Van
<b>COMFORT PRODUCTS</b>			
Dashboard Camera for integration with Ford SYNC@3/SYNC@4	2 730 087	↗	↗
Garmin®* Dashboard Camera 66W	2 489 135	↗	↗
Coat Hanger with docking unit, matt black	2 448 529	↗	↗
Air Purifier	2 485 741	↗	↗
ACV* Sleeping Headrest black PVC leather with silver piping	2 520 207	↗	↗
ClimAir®* Wind Deflectors for front door windows, transparent	2 104 599	↗	↗
ClimAir®* Wind Deflectors for front door windows, black	1 856 561	↗	↗
Navco* Interior LED Dome Light for load space area	1 841 959	↗	↗

## INFOTAINMENT

	Partnumber	Double Cab in Van	
		Double Cab in Van	Van
<b>OTHER INFOTAINMENT ACCESSORIES</b>			
Bury* POWERMOUNT System	Various	↗	↗

## WHEELS

	Partnumber	Double Cab in Van	
		Double Cab in Van	Van
<b>WHEEL ACCESSORIES</b>			
Wheel Cover 16"	2 040 066	↗	↗
Locking Wheel Nuts Kit for alloy wheels	2 221 666	↗	↗
Center Cap blue, with Ford logo	1 429 118	↗	↗
Center Cap black, with Ford lettering	5 642 902	↗	↗

Wheel size depends on the original wheel size ordered for your vehicle. For further details, please contact your Ford dealer.

## STYLING

	Partnumber	Double Cab in Van	
		Double Cab in Van	Van
<b>BODY DESIGN</b>			
Ford Licence Plate Holder black, with blue Ford logo and white "BRING ON TOMORROW" lettering	Various	↗	↗

Please note that this overview does not show the complete range of products available. For further accessories and more information please visit [www.ford-accessories.co.uk](http://www.ford-accessories.co.uk).

\*The identified accessories are carefully selected third party supplier branded accessories and may have different warranty conditions, the details of which can be obtained from your Ford Dealer.

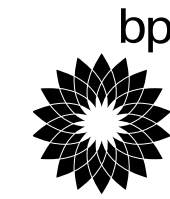
↗ Available — Not available

## FORD ACCESSORIES

### **FORD ONLINE ACCESSORY CATALOGUE**

Full product information and additional accessories are available in the Online Accessory Catalogue.

[Read more](#)



Ford and BP – working together to reduce fuel consumption and emissions.



# BOOK A TEST DRIVE TODAY

The best way to discover the exciting Transit Van range is from behind the wheel.

Book your test drive, and your local Ford Dealer will be happy to assist you as soon as possible.

Contact us now

# CONFIGURE THE VEHICLE THAT'S RIGHT FOR YOU

Visit our Build & Price section now

Build & Price

**Illustrations, descriptions and specifications.** This catalogue was correct at the time of going to print. However, Ford policy is one of continuous product development. The right is reserved to change specifications, colours and recommended prices of the models and items illustrated and described in this publication at any time. For the latest details always consult your Ford Dealer. **Optional equipment.** Throughout this publication, wherever a feature is described as being an 'Option' or 'Option Fitment/Pack' etc, you should assume that it will be at extra cost to the base vehicle, unless specifically stated to the contrary. All models and colour combinations are subject to availability. **Note.** Some images portrayed are of a pre-production model and/or are computer generated, therefore, the design/features on the final version of the vehicle may differ in various respects. In addition, some of the features shown on the vehicles may be optional. **Note.** This brochure contains both original Ford accessories as well as a range of products from our suppliers. Fitment of accessories may have an impact on your vehicle's fuel consumption. **+** The identified accessories are carefully selected third party supplier branded accessories which do not come with a Ford warranty but are covered by the third party supplier's own warranty, the details of which can be obtained from your Ford Dealer. **Note.** The Bluetooth® word mark and logos are owned by the Bluetooth SIG, Inc. and any use of such marks by Ford Motor Company is under licence. The iPod word mark and logos are the property of Apple Inc. Other trademarks and trade names are those of their respective owners. **Note.** Some driver assistance features and safety features described in this brochure are designed to function using sensors, whose performance may be affected under certain weather or environmental conditions.

**The Government fuel figures** do not express or imply any guarantee of the fuel consumption of any particular vehicle. The vehicles themselves have not been tested and there are inevitably differences between individual vehicles of the same model. In addition, a vehicle may incorporate particular modifications. Furthermore, the driver's style and road and traffic conditions, as well as the extent to which the vehicle has been driven and the standard of maintenance, will affect its fuel consumption. **Insurance groups** are only as recommended by the Association of British Insurers. You should always consult your insurance adviser for confirmation.

#### Ford One Call

In the unlikely event that your Ford Dealer can't help you or if you need to speak to us directly, call 0203 564 4444

Ford Rental – local service nationwide

Car and Van rental from our latest model range. Contact your local Ford Dealer for more information

#### Ford Motability

Call our Ford Motability team on 0345 6040019

Finance

Ford Credit Customer Services 0345 712 5490.

Ford Lease Customer Services 0344 600 1405

Calls to 0344 and 0345 numbers are charged at the same rate as a standard 01 or 02 geographic number, even when calling from a mobile.

Published by Ford Motor Company Limited, Laindon, Essex, England. Registered in England No. 235446. © Ford Motor Company Limited.