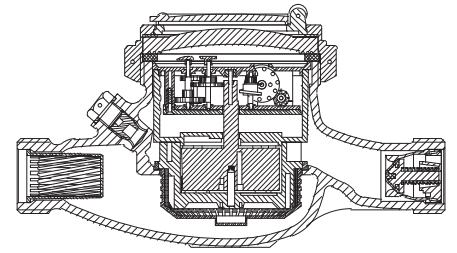


# BAYLAN

## WATER METERS

### TY-2

## Multi jet Wet type Water Meter



### GENERAL

- MID Certified
- Available for optical reading
- Pulse output and AMR reading features are optional
- Multi jet working principle assures a long service time
- Suitable for potable water
- Low pressure loss, high sensitivity at initial flow
- Special glass with high resistance to pressure and impact
- 360° rotating lid • Double filter • Non return valve
- Electrostatic painted body made of corrosion resistant brass
- 3 years of warranty • Almost no maintenance
- Suitable for cold water up to 50°C
- Service and spare parts available for 10 years
- Environmental Classes

Climatic : -10°C/+55°C | Mechanic: M1/O | Elektromagnetic: E2

•  $Q2 \leq Q \leq Q4$  Maximum Permissible Error

Class 2 Water Meters;  $\% \pm 2$  (Water Temp.  $\leq 30^\circ\text{C}$ ),  $\% \pm 3$  (Water Temp.  $> 30^\circ\text{C}$ )

Class 1 Water Meters;  $\% \pm 1$  (Water Temp.  $\leq 30^\circ\text{C}$ ),  $\% \pm 2$  (Water Temp.  $> 30^\circ\text{C}$ )

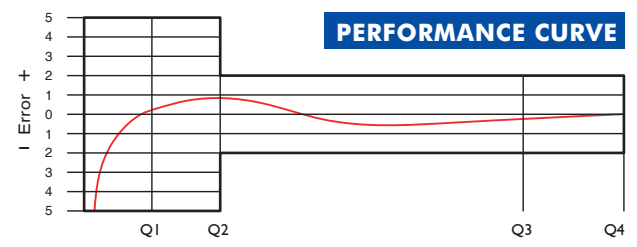
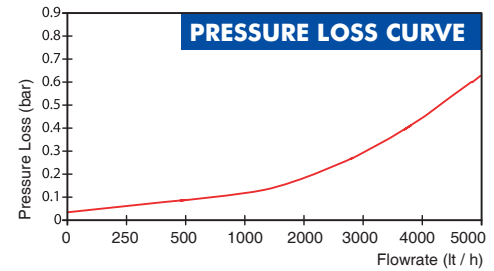
•  $Q1 \leq Q < Q2$  Maximum Permissible Error

Class 2 Water Meters;  $\% \pm 5$  | Class 1 Water Meters;  $\% \pm 3$



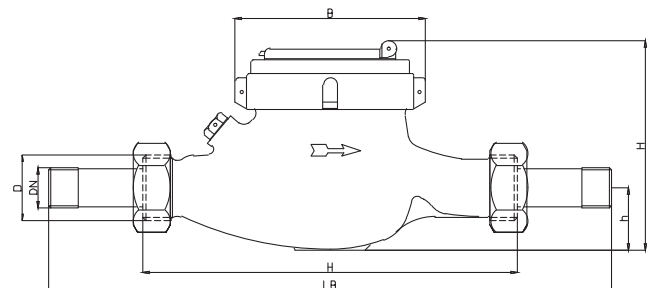
### PERFORMANCE DATA

Overload Flowrate	Q4	m <sup>3</sup> /h	5	
Permanent Flowrate	Q3	m <sup>3</sup> /h	4	
Transitional Flowrate	Q2	m <sup>3</sup> /h	0,0256	0,08
Minimum Flowrate	Q1	m <sup>3</sup> /h	0,016	0,05
Q3/Q1 (MI-001 OIML R49)	-		$\leq 250$	$\leq 80$
Mounting on the network	-	H	V	
Maximum Registration Capacity	m <sup>3</sup>	9999 / 99999 / 99999,99 / 99999,999		
Maximum Working Pressure	bar	16		
Maximum Working Temperature	°C	50		
Pressure Loss Class	bar	0,63		
Initial Flow	Qi	l/h	10	
Smallest Reading Resolution	m <sup>3</sup>	0,00005		
Class	-	Class 1/Class 2		
Unit weight	kg	1,23		
Package Weight (without connect)	kg	13,00		
Package Weight (with connect)	kg	14,90		
Quantity per package	-	10		
Package dimensions	cm	24,5x46,5x22		



### DIMENSIONS

Nominal diameter	DN	20	mm
Connecting diameter	D	G 1	B
Total overall meter height	H	109	mm
Axis height	h	31,5	mm
Width	B	97	mm
Length	L	190	mm
Length with connections	LB	270	mm



"Due to continuous development of our products, we reserve the right to modify our product design or construction without prior notice."