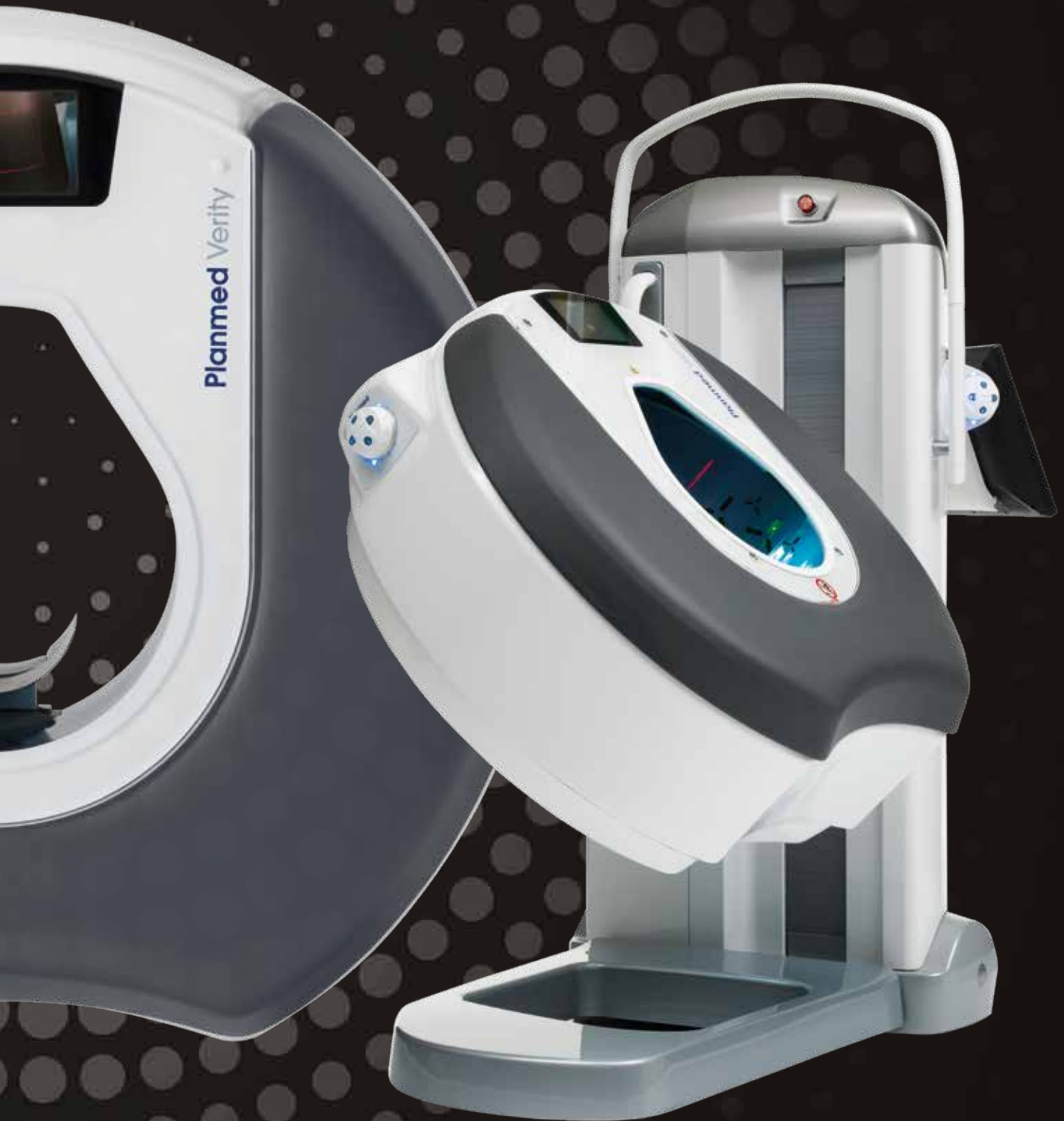


Planmed Verity®

The original weight-bearing CBCT



ENGLISH

Planmed

Planmed Verity® – extraordinary adaptability

Planmed Verity® is a unique 3D imaging solution for orthopedic, head and neck imaging. This mobile all-in-one Cone Beam Computed Tomography (CBCT) scanner provides premium quality images in a compact and beautifully designed package. It is a perfect fit for patients of all sizes – from adult to pediatric patients.

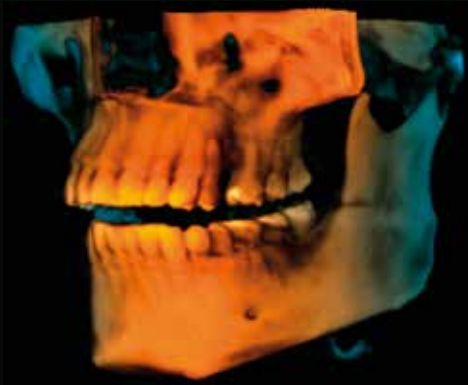
Exceptional image quality

Planmed Verity's high-quality 3D images capture even the smallest bone structures with minimal interference. Iterative algorithms and a high resolution ensure optimal image quality. Arthrographic examinations with intra-articular contrast provide excellent visualizations of joint disorders.



Weight-bearing and adaptable

Planmed Verity features a motorized gantry which can be adjusted for height and tilt for the best possible positioning of the patient. The knee, ankle, foot and toes can be imaged in a natural position with the patient standing.



Versatile head and neck imaging

Planmed Verity's maxillofacial, ENT and dental imaging capabilities make it a versatile tool for imaging centers and hospitals. With Planmed Verity, imaging of the head and neck is both effortless for the staff and comfortable for the patient.

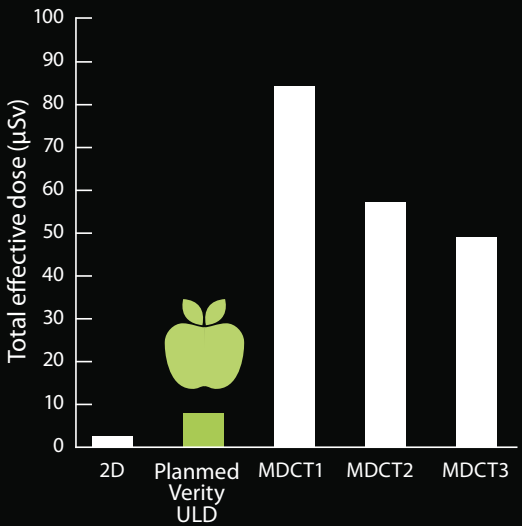


Movement artefact correction

Planmed Verity can be used with the **Planmeca CALM™** algorithm for patient movement correction. The revolutionary algorithm eliminates the need for retakes by clearing movement artefacts from CBCT images – excellent for imaging livelier patients.

Ultra low dose 3D imaging

The pioneering **Planmeca Ultra Low Dose™** (ULD) imaging protocol enables CBCT imaging at a significantly lower patient dose than conventional CT imaging – without a reduction in image quality.



Koivisto, J., Kiljunen, T., Wolff, J. and Kortensniemi, M: Assessment of effective radiation dose of an extremity CBCT, MSCT and conventional X ray for knee area using MOSFET dosimeters. Radiat. Prot. Dosim. Advance Access published July 3, 2013, doi: 10.1093/rpd/nct162

Key features

Patient positioning

- Positioning camera
- Soft, adjustable gantry
- Anatomy-specific support trays
- Integrated scattered radiation shield

3D programs

Upper extremities

- Elbow
- Arm
- Wrist
- Hand
- Fingers

Lower extremities (also weight-bearing)

- Knee
- Leg
- Ankle
- Foot
- Toes

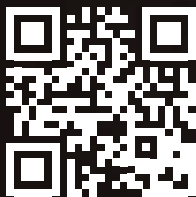
Head and neck

- Ear
- Face
- Jaw
- Neck
- Sinuses
- Teeth

Technical specifications

Anode voltage	80–96 kV
Anode current	1–12 mA
Dimensions	(W x L x H) 76 x 184 x 160 cm / 30 x 72 x 63 in.
Weight	350 kg / 770 lbs
Field of view	16 x 13 cm with single scan – stitched up to 16 x 20 cm
Voxel sizes	200, 400 µm
Input	100–240V single phase, 10–16A
Connectivity	DICOM 3

CE 0598  Planned Verity



Watch video :
Planmed Verity®
Extremity Scanner

Planmed

Planmed Oy Sorvaajankatu 7 | 00880 Helsinki | Finland | tel. +358 20 7795 300 | fax +358 20 7795 664 | sales@planmed.com | www.planmed.com



30011481/0122/en