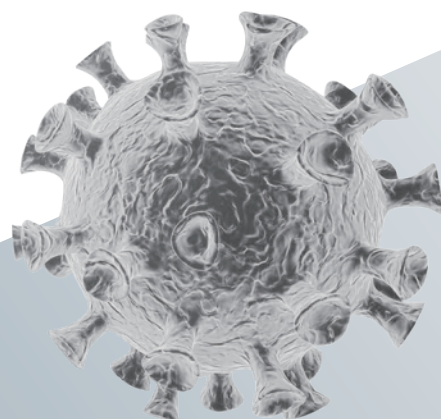




WANTAI SARS-CoV-2 IgM ELISA

*Developing Scientifically
Focusing on the Health*

COVID-19



For more information:
wtexport@ystwt.com



Sensitivity: 86.09%
Specificity: 99.35%
Incubation time: 30'+30'+15'
Specimen volume: 10 μ l

Clinical studies in China

Prospective clinical evaluation was conducted at four hospitals in China during the 2020 COVID-19 outbreak. Samples from total of 572 cases were tested among which 266 were confirmed (China COVID-19 diagnosis protocol, including China CFDA approved PCR tests), and 306 were COVID-19 excluded cases.

| Clinical trial centers | Confirmed | Excluded | Total |
|--------------------------------------|-----------|----------|-------|
| Academy of Military Medical Sciences | 12 | 0 | 12 |
| Shenzhen Third People's Hospital | 173 | 33 | 206 |
| Zhejiang University | 81 | 273 | 354 |
| Total | 266 | 306 | 572 |

Sensitivity and specificity of Wantai SARS-CoV-2 IgM ELISA

| Evaluation results | | Confirmed/ excluded SARS-CoV-2 results | | Total |
|--------------------|----------|--|----------|-------|
| | | Confirmed | Excluded | |
| Wantai | Positive | 229 | 2 | 231 |
| | Negative | 37 | 304 | 341 |
| Total | | 266 | 306 | 572 |

Sensitivity: **86.09%** 86.09%

Specificity: **99.35%** 99.35%

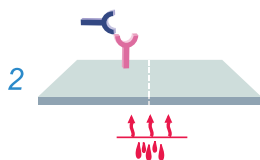
Overall agreement: **93.18%** 93.18%



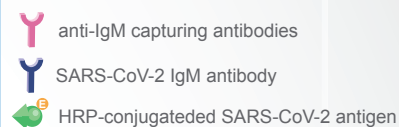
Principle and Procedures



- Microwell strips pre-coated with anti-IgM capturing antibodies

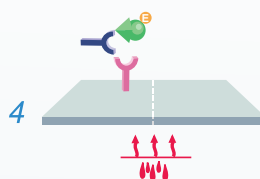


- Add 100µl of diluent and 10µl of specimens/ Controls Incubation at 37 °C for 30 min



3

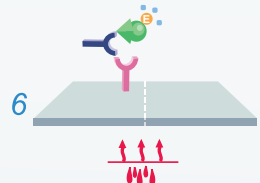
5 Wash cycles



- Add 100µl of HRP-Conjugate Incubation at 37 °C for 30 min

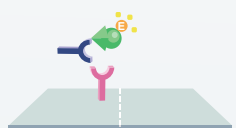
5

5 Wash cycles



- Add 50µl of Chromogen Solution A and 50µl of Chromogen Solution B Incubation at 37 °C for 15 min

7



- Add 50µl of Stop Solution

8



- Read by single wavelength 450nm or dual wavelength 450/600~650nm

Ordering Info

| Cat. | Product | Detection | Specimen | Pack size |
|---------|-----------------------------|--------------|--------------|-----------|
| WS-1196 | WANTAI SARS-CoV-2 IgM ELISA | IgM Antibody | Serum/Plasma | 96T/kit |