
Product Catalogue

Sakura Finetek Europe



continuous innovation for pathology





Welcome to Sakura

Sakura has achieved its success and solidified its reputation by providing timely, ingenious solutions to the real challenges laboratories face on a day-to-day basis.

Our rich history has given us a thorough understanding of technology, quality, reliability, value for money and our customer's requirements. We use this knowledge and passion to develop high quality instruments, consumables and services that anticipate developments in both technology and market need.

Providing this combination has established Sakura as a trusted Total Solutions Provider.

A long tradition of excellence

Known for best-in-class automation and reliability Sakura Finetek remains a privately-held company in business for almost 150 years. The history of Sakura goes back to 1871, the early Meiji period. Prior to 1870, the company was called Iwashiya, and it manufactured and sold pharmaceuticals throughout Japan. The medical equipment division of Iwashiya was formed in 1871, and by 1887, the trademark Sakura (literally, "cherry blossom") was registered. For the next 90 years, the company manufactured a variety of medical equipment including the first Japanese microscope. In 1962, the company name was changed to Sakura Finetechnical Co., Ltd. Sakura is the original manufacturer of the Tissue-Tek®, Tissue-Tek Prisma®, Tissue-Tek VIP® and Tissue-Tek Xpress® x Series products that have become industry standards over the years.

This lineup of prestigious products also includes our consumables like the Accu-Edge® Blade Systems, Tissue-Tek® Uni-Cassette® Systems and Tissue-Tek® Paraform® brands.

Sakura Finetek U.S.A., Inc. was established in the United States in 1986. The company acquired the histology and cytology product lines of Miles Inc. in 1994.

In 1994 Sakura Finetek Europe is set up as an independent organisation, reporting to the Sakura Finetek U.S.A., Inc. Sakura Finetek Europe has the mission to support its sales entities and distributors.

Today, we distribute products through our network of more than 60 Sakura sales entities and distributors to over 100 countries in Europe, Middle East, Africa and India. The organisation is developing, professionalizing and growing continuously, and thus maintaining its position as a trustworthy and valuable partner in pathology. With the global headquarters in Japan and regional headquarters in Japan, the United States and The Netherlands, the global strategy of worldwide representation has been fulfilled to guarantee the customer the best way in service and support.

Changes are necessary to cope with increasing workload, cost pressure and a demand for shorter turnaround times. Highly quality instruments and consumables are not enough these days, more direct help is needed. Sakura developed histopathology services to support you to meet future challenges and to be ahead of time. Sakura is a trusted total solutions provider.

Global Mission Statement

Advancing cancer diagnostics by providing integrated solutions for anatomic pathology and patients through best-in-class innovation, quality and customer care.

A woman with blonde hair, wearing a white lab coat, is looking down at a piece of laboratory equipment. The equipment is white and has a screen. The background is a laboratory setting with various pieces of equipment.

Table of contents

Intro	2
Sakura Services	4
SMART Automation	8
1 Grossing	9
2 Identification	15
3 Tissue Processing	19
4 Tissue Embedding	27
5 Microtomy	39
6 Staining & Coverslipping	47
7 Imaging	59
8 Cryotomy	63
9 Cytology	67
10 Archiving	69

Sakura Services

Increasing workload and cost pressures, coupled with the ever pressing demand for shorter turnaround times are just some of the daily challenges that histopathology laboratories deal with. High quality instruments, consumables and advice can support the laboratory manager and staff, but there is more.

More direct help is needed to prepare your laboratory for the future. Sakura's range of histopathology services is designed to assist you to meet these challenges and position your laboratory optimally in a highly competitive world and place you ahead of time. Complementing the high quality instruments and consumables we are known for, our services help you to become more efficient, reduce your turnaround times and increase the quality of your laboratory's results.

Service Agreements

High instrument performance and maximised uptime with predictable pricing

In order to guarantee the daily routine in your laboratory, the continuous availability and reliable operations of your instruments are crucial. Sakura's highly skilled and certified Technical Service Team provides annual preventative maintenance as well as the latest hardware and software updates for your Sakura instrument, resulting in less corrective maintenance. With one of Sakura's three different Service Agreements, you are ensured of optimal and quick on-site response if your instruments malfunction.

With a Platinum, Gold or Silver Service Agreement, we can meet your needs and budget. A fixed periodic fee will



Platinum Service Agreement includes Tissue-Tek® iSupport™

The next level in unmatched, reliable operations is Tissue-Tek® iSupport™. With the latest solution in remote monitoring, Tissue-Tek iSupport maximises the uptime of your valuable instruments while reducing your service costs.

Furthermore, the Sakura Technical Services organisation is able to detect deviations in critical parameters, proactively preventing problems from occurring.



give you more control of your budget, as costs are predictable. While we take care of your instruments, you can focus on your patients.

Financial Solutions

Enable your lab to benefit from the latest technology solutions

A financial solution enables your laboratory to benefit from the latest technology solutions to deal with those issues without the need to obtain high capital investment.

A fixed periodic payment will enable Sakura to deliver you the latest instruments, consumables and service in order to easily deal with the increasing workloads, shortage of skilled staff and enabling turnaround times. This fixed fee puts you in control of your lab budget as you know exactly how much will be charged.

Workflow Consultancy

Increase the efficiency and quality of your laboratory and do more with the same resources

The Workflow Consultancy enables your laboratory to gain more insight into the current process to identify bottlenecks and to consult on improvements. The aim of the consultancy service is to improve the process of the histopathology laboratory by applying Lean principles. This allows you to do more with the same capacity/ resources while improving the quality of work and results.

The Workflow Consultancy consists of a one-day workflow observation. This provides the lab with information about the processes, such as utilisation rates of the workstations and current state of the material flow. The Workflow Consultancy is managed



Sakura Services



Financial Solutions

Our 'cost per test' and other financial services enables your laboratory to benefit from the latest technology solutions.



Service Agreements

Our 3 levels of service ensure you of a high instrument performance and maximised uptime with predictable costs.



User Training

Increase the quality of your laboratory results with optimal and safe use of your instruments.



Workflow Consultancy

Increase the efficiency and quality of your laboratory and do more with the same resources.



Express Delivery

Prevent downtime and order urgently needed consumables to have them delivered the next day.



and executed by Lean & 6 Sigma consultants, specialised in histopathology laboratories. The consultant will analyse the observations and the collected data, to identify bottlenecks and non-value adding steps in the processes. He will provide recommendations in order to maximise the productivity within your laboratory and how to best make use of staff and equipment, which allows staff to spend more time on other critical activities. The recommendations are practical and pragmatic, so you and your team can immediately start working on the quick wins.

Item code	Description
SE-WC-001	Workflow Consultancy
SE-WC-002	Workflow Consultancy with presentation

User Training

Increase the quality of your laboratory results with optimal and safe use of your instruments

It has been proven that well trained people work more efficient and perform better. By regularly training your staff, you will reduce rework and increase the quality of your results.

Sakura offers on-site customer training on their instruments to optimise your results. These User Training sessions ensure that your technicians acquire in-depth knowledge of the Sakura instruments and consumables. With this knowledge they will be able to use the instruments to their fullest potential. The training is designed to enable your technicians to operate the instruments efficiently and perform regular maintenance.

Express Delivery

Prevent downtime and order urgently needed consumables to have them delivered the next day

A surplus in work or unexpected shortage can increase your need for consumables. The Express Delivery service gives you the opportunity to order urgently needed products* in small quantities throughout the day and have them delivered the next working day. If you order by 5 p.m. CET, you'll receive a next working day door-to-door delivery for a fixed fee.

Conditions and exceptions

- Only consumables and accessories
- 20 kg measured by weight, hand carried
- Hazardous goods have a longer delivery time

This service guarantees more uptime, as there is no waiting time for the consumables and you also do not have to wait until you have a minimum order amount. In case of a shortage we make sure you receive the consumables the next working day.

If you want to reduce your stock holdings and prefer a just in time delivery method, you can use Express Delivery. This will free up space required for large stock holdings to be used for the other important activities within the lab.

Item code	Description
SE-ED-001-01	Express Delivery Germany
SE-ED-001-02	Express Delivery Denmark
SE-ED-001-03	Express Delivery Norway
SE-ED-001-04	Express Delivery Holland
SE-ED-001-05	Express Delivery Belgium
SE-ED-001-06	Express Delivery France
SE-ED-001-07	Express Delivery United Kingdom
SE-ED-001-08	Express Delivery Sweden
SE-ED-001-09	Express Delivery Austria
SE-ED-001-75	Express Delivery Ireland
SE-ED-001-92	Express Delivery Italy
SE-ED-001-95	Express Delivery Spain
SE-ED-001-98	Express Delivery Portugal



Sakura Services We take care of everything

With Sakura Services we will offer total solutions to our customers. These new services can help laboratories to become more efficient, reduce turnaround times and increase the quality of the laboratories results. To find out more about our services, e-mail us via services@sakura.eu or contact your local Sakura representative.

SMART Automation Powered by Sakura



SMART Automation maximising productivity

For more than 100 years, Sakura Finetek products have been used in histopathology laboratories around the world. To further support laboratories, Sakura offers the SMART Automation product line aimed to maximise the productivity of a laboratory. SMART Automation is the logical next step to enhance laboratory performance. Optimise your laboratory's productivity, while reporting better turnaround times using the same resources.

Millions of patients around the world have benefited from better and faster diagnoses offered by the histopathology laboratories that have implemented SMART Automation. SMART Automation results in consistent high-quality operations for all tissue samples: from biopsies to breast tissue. Automation and standardisation of routine processes eliminate errors and variations in end results, leading to consistent high-quality and reduction in rework.

Better and faster service
to more patients using the
same resources

SMART Automation labs reported:

- Improved productivity by more than 30% with the same number of technicians
- Reduced time to diagnose by 67%
- 80% of the cases are ready within 24 hours
- Better control of the daily process



1. Grossing

Grossing Stations

Tissue-Tek® Accu-Edge® Elevating Grossing Station

Tissue-Tek® Accu-Edge® Countertop Work Station

Tissue-Tek® Accu-Edge® Pathology Work Station

Grossing Tools System

Tissue-Tek® Accu-Edge® Grossing Board

Tissue-Tek® Accu-Edge® Grossing Forks

Tissue-Tek® FormaGO®

Grossing & Trimming

Tissue-Tek® Accu-Edge® Trimming Knife Series

Tissue-Tek® Accu-Edge® AutopsyKnife Series

Tissue-Tek® Accu-Edge® Dissecting Scalpel Series

Tissue-Tek® Accu-Edge® Safety Trimming Knife Handle & Blades Series

Tissue-Tek® Accu-Edge® Replaceable Blade Scissors

Tissue-Tek® Accu-Edge® Grossing Stations



Tissue-Tek® Accu-Edge® Grossing Stations

Tissue-Tek® Accu-Edge® Grossing Stations come in various configurations and shapes like the Elevating Grossing Station with or without hands free controls, a space saving Countertop Station or an economical Pathology Work Station.

Tissue-Tek® Accu-Edge® Elevating Grossing Station

Constructed from high-quality stainless steel, the Tissue-Tek® Accu-Edge® Elevating Grossing Station is a floor model that stands at counter height. The Elevating Grossing Station has the ability to elevate from 81 cm to 112 cm to accommodate all lab personnel.

This Station is equipped with a vacuum breaker-protected water supply and duct directly to the building ventilation system. Other standard features include ½ 3,7 kW disposal, polyethylene dissecting board, magnetic instrument holder, dissecting area rinse, shelving, and a spray hose assembly.

Tissue-Tek® Accu-Edge® Countertop Work Station

The Countertop Work Station is available with two duct options: ducting either to an outside ventilation source or by using the self-contained ventilation system with replaceable filters. Other standard features include integral sink with mixing faucet, easily accessible control panel, ample lighting, formalin container with spigot, C-fold paper towel holder, magnetic instrument holder, and a polyethylene dissecting board.

Tissue-Tek® Accu-Edge® Pathology Work Station

The Tissue-Tek® Accu-Edge® Pathology Work Station can be customised by allowing the ability to choose from the standard base leg assembly or the base leg assembly with cabinet. The Tissue-Tek Accu-Edge Pathology Work Station is in the same way equipped as the Tissue-Tek Accu-Edge Countertop Work Station with an included large working space.

Item code	Description
0305	Tissue-Tek® Accu-Edge® Elevating Grossing Station with Infrared Controls
0306	Tissue-Tek® Accu-Edge® Elevating Grossing Station without Infrared Controls
0307	Tissue-Tek® Accu-Edge® Non-elevating Grossing Station with Infrared Controls
0308	Tissue-Tek® Accu-Edge® Non-elevating Grossing Station without Infrared Controls
0310	Tissue-Tek® Accu-Edge® Countertop Work Station
0315	Tissue-Tek® Accu-Edge® Pathology Work Station
0120	Tissue-Tek® Accu-Edge® Base Leg Assembly (for item 0310 & 0315)
0121	Tissue-Tek® Accu-Edge® Base Leg Assembly with Cabinet (for item 0310 & 0315)
0337	Tissue-Tek® Accu-Edge® PathPRO™ Grossing Station, Elevating
0338	Tissue-Tek® Accu-Edge® PathPRO™ Grossing Station, Non-elevating
0150	Tissue-Tek® Accu-Edge® Camera Mount Facility
0152	Tissue-Tek® Accu-Edge® Cassette Holders
0164	Tissue-Tek® Accu-Edge® Eyewash Assembly (FO)*
0169	Tissue-Tek® Accu-Edge® Filter Activated Carbon
0170	Tissue-Tek® Accu-Edge® Flammable Storage Cabinet (FO)*
0175	Tissue-Tek® Accu-Edge® Forms Holder
0176	Tissue-Tek® Accu-Edge® Full Perimeter Rinse (FO)*
0177	Tissue-Tek® Accu-Edge® Glove Box holder
0190	Tissue-Tek® Accu-Edge® Monitor & Keyboard Stand
0201	Tissue-Tek® Accu-Edge® Ruler Removable (FO)*
0203	Tissue-Tek® Accu-Edge® Scale Economy Grade
0204	Tissue-Tek® Accu-Edge® Scale Digital
0205	Tissue-Tek® Accu-Edge® Seismie Anchoring Kit
0206	Tissue-Tek® Accu-Edge® Shelving/Cabinets, Stainless Steel (FO)*
0207	Tissue-Tek® Accu-Edge® Side Splashes
0208	Tissue-Tek® Accu-Edge® Splash Shield, Plexiglas
0215	Tissue-Tek® Accu-Edge® Trash Container, Ventilated (FO)*
0217	Tissue-Tek® Accu-Edge® Utility Drawer (FO)*
0219	Tissue-Tek® Accu-Edge® Valve Air (FO)*
0220	Tissue-Tek® Accu-Edge® Valve Gas (FO)*
0224	Tissue-Tek® Accu-Edge® Video Camera Arm
0226	Tissue-Tek® Accu-Edge® Video or Dictation Mounts

Item code	Description
0228	Tissue-Tek® Accu-Edge® Voice-Activated Dictation
0230	Tissue-Tek® Accu-Edge® Writing Platform, Pull-Out (FO)*
0390	Tissue-Tek® Accu-Edge® Ventilation Assembly, Self-Contained
0354	Tissue-Tek® Accu-Edge® Disposal, 0.65 HP
0372	Tissue-Tek® Accu-Edge® Formalin Dispense/Collect System
0379	Tissue-Tek® Accu-Edge® Infrared Control, Hands-Free, Hot/Cold Water
0380	Tissue-Tek® Accu-Edge® Infrared Control, Hands-Free, Disposal
0381	Tissue-Tek® Accu-Edge® Infrared Control, Hands-Free, Dissecting Area Rinse
0386	Tissue-Tek® Accu-Edge® Magnifier Light, Deck Mount
0388	Tissue-Tek® Accu-Edge® Microphone on Flex Arm
0392	Tissue-Tek® Accu-Edge® X-Ray Illuminator

*(FO) Factory Option

Contact your local distributor for availability

Tissue-Tek® Accu-Edge® Grossing Tools Systems



Tissue-Tek® Accu-Edge® Grossing Tools System

The Tissue-Tek® Accu-Edge® Grossing Tools System will allow you to consistently and easily obtain tissue samples that have a controlled and uniform thickness. This method of standardised grossing enables consistent quality in tissue processing.

Tissue-Tek® Accu-Edge® Grossing Tools offer you:

- Consistent and standardised grossing, resulting in the best processing results
- Tools are easy to clean and decontaminate, minimising risk of contamination by the tissue

Tissue-Tek® Accu-Edge® Grossing Board

Tissue-Tek® Accu-Edge® Grossing Boards are working surfaces with easily adjustable wells that allow tissue thickness and size to be standardised. The wells can be individually adjusted from 1.5 mm to 3.0 mm. Accu-Edge Grossing Boards can be used as a stand-alone grossing area or on your current grossing bench.

With Tissue-Tek Accu-Edge Grossing Boards, you are just a few steps away from the perfect sample:

- Calibrate the well at the required depth
- Position the tissue in the well
- Place the tamper on the tissue
- Gross it at the desired thickness

Tissue-Tek® Accu-Edge® Grossing Forks

Tissue-Tek® Accu-Edge® Grossing Forks are designed for hollow organs or specimens with layers and are available in three sizes: 1,5 mm, 2,0 mm and 2,5 mm. Each fork has two set of tines; the distance between the tines determines the size of the fork.

Tissue-Tek Accu-Edge Grossing Forks hold the tissue in surfaces of the fork, resulting in a section of the desired thickness between the tines.

Item code	Description
4800	Tissue-Tek® Accu-Edge® Grossing Board Board (43 x 29 x 3 cm)
4802	Tissue-Tek® Accu-Edge® Grossing Wells (34 x 9 x 3 cm)
4803	Tissue-Tek® Accu-Edge® Grossing Fork 1.5 mm
4804	Tissue-Tek® Accu-Edge® Grossing Fork 2.0 mm
4807	Tissue-Tek® Accu-Edge® Grossing Fork 2.5 mm
4814	Tissue-Tek® Accu-Edge® Cleaning Brush; 10/pcs
4846	Tissue-Tek® Accu-Edge® Tamper Set (Large + Small)
4847	Tissue-Tek® Accu-Edge® Gauge Set



Tissue-Tek® FormaGO® Formalin Safety System

The Tissue-Tek FormaGO Formalin Safety System includes products that protect your staff and the environment from the hazardous effects of formalin. Sakura developed this new product line to improve performance, reliability and convenience in handling formalin, with the safety of our valued customers and the environment in mind.

Item code	Description
9151	Tissue-Tek® FormaGO® Formalin Neutraliser
9154	Tissue-Tek® FormaGO® Formalin Absorption Wipes
9157	Tissue-Tek® FormaGO® Formalin Absorption Pads, Large
9158	Tissue-Tek® FormaGO® Formalin Absorption Granules

Tissue-Tek® Accu-Edge® Grossing & Trimming



Tissue-Tek® Accu-Edge® Trimming Knife Series

The Tissue-Tek® Accu-Edge® Trimming Knife Series features four sturdy handles designed to hold your choice of three possible blade lengths. These specially designed handles and blades provide an extremely sharp knife for a wide variety of grossing requirements. Advanced design enables quick, easy blade removal and replacement. The F80 and F80-mini are used with Accu-Edge® Disposable Microtome Blades.

Item code	Description
1454	Tissue-Tek® Accu-Edge® Plastic Trimming Knife Handle F80
1455	Tissue-Tek® Accu-Edge® Trimming Knife Handle F80-mini
4785	Tissue-Tek® Accu-Edge® Trimming Blades 130 mm; 50/pcs
4698	Tissue-Tek® Accu-Edge® Trimming Blade 130 mm, round edge; 50/pcs
4786	Tissue-Tek® Accu-Edge® Plastic Trimming Knife Handle F130
4789	Tissue-Tek® Accu-Edge® Trimming Blade 260 mm; 50/pcs
4790	Tissue-Tek® Accu-Edge® Plastic Trimming Knife Handle F260



Tissue-Tek® Accu-Edge® Dissecting Scalpel Series

The Tissue-Tek® Accu-Edge® Dissecting Scalpel Series features an autoclavable, chemical resistant handle designed to hold your choice of two possible dissecting blades. The two different dissecting blades consist of a wide, curved tip (F-61) or a small, pointed tip for various applications. Advanced design enables quick, easy blade removal and replacement.

Item code	Description
4791	Tissue-Tek® Accu-Edge® Dissecting Scalpel Handle
4792	Tissue-Tek® Accu-Edge® Dissecting Scalpel Blades F61, urved Tip; 5x20/pcs
4793	Tissue-Tek® Accu-Edge® Dissecting Scalpel Blades F62, ointed Tip; 5x20/pcs



Tissue-Tek® Accu-Edge® Autopsy Knife Series

The Tissue-Tek Accu-Edge Autopsy Knife Series offers one chemical - and heat - resistant resin handle that accommodates three blade sizes. Extremely sharp autopsy blades are manufactured from quality, durable stainless steel. Blades, available in three sizes, are interchangeable with autoclavable plastic handle.

Item code	Description
4781	Tissue-Tek® Accu-Edge® Autopsy Knife Handle
4782	Tissue-Tek® Accu-Edge® Autopsy Blade 100 mm; 2x5/pcs
4783	Tissue-Tek® Accu-Edge® Autopsy Blade 170 mm; 2x5/pcs
4784	Tissue-Tek® Accu-Edge® Brainblade 325 mm



Tissue-Tek® Accu-Edge® Safety Trimming Knife Handle & Blades Series

The Tissue-Tek® Accu-Edge® Safety Trimming Knife Handle combined with the Safety Trimming Blades allows quick and easy blade change, therefore providing users increased safety and comfort in their daily laboratory work. The Safety Trimming Knife Handle (4695) is very easy to hold, due to its ergonomically designed plastic handle.

Item code	Description
4695	Tissue-Tek® Accu-Edge® Safety Trimming Knife Handle
4696	Tissue-Tek® Accu-Edge® Safety Trimming Blade 130 mm 1x10/pcs
4697	Tissue-Tek® Accu-Edge® Safety Trimming Blade 260 mm 1x10/pcs



Tissue-Tek® Accu-Edge® Replaceable Blade Scissors

The Tissue-Tek® Accu-Edge® Replaceable Blade Scissor features three disposable, easy to replace, extremely sharp blades (sharp/sharp, sharp/blunt and blunt/blunt) for a wide variety of grossing applications.

Item code	Description
4794	Tissue-Tek® Accu-Edge® Replaceable Blade Scissors
4795	Tissue-Tek® Accu-Edge® Replaceable Blade: Sharp/Sharp; 5/pcs
4796	Tissue-Tek® Accu-Edge® Replaceable Blade: Sharp/Blunt; 5/pcs
4797	Tissue-Tek® Accu-Edge® Replaceable Blade: Blunt/Blunt; 5/pcs



2. Identification

Multi Cassette Printer

Tissue-Tek® AutoWrite®

Stacked Cassettes

Stacks Tissue-Tek® Paraform® Frames

Stacks Tissue-Tek® Uni-Cassette®

Stacks Tissue-Tek® Embedding Cassette

Tissue-Tek® AutoWrite® Cassette printer



SMART Automation Powered by Sakura

Specifications

Throughput	
Cassette Printer	900 cassettes per hour (automatically loading)
Dimensions	
W x D x H	46 x 65 x 94 cm
Weight	29 kg
Load Capacity	
Cassette Printer	6 magazines; 80 cassettes per magazine
Unload Module	100 cassettes
Ink Cartridge	60.000 cassettes or 3,5 months (whatever comes first)
Print Resolution	Up to 360 dpi
Ink	Reagent resistant, non-erasable
Printer Driver	Windows®

Tissue-Tek® AutoWrite® Cassette Printer

Sakura Finetek has innovated the way to print cassettes in the histology and cytology laboratory by introducing the new and improved version of the Tissue-Tek® AutoWrite®.

Start using the Tissue-Tek AutoWrite in your laboratory and experience the convenience of fully automated and reliable labelling of your cassettes... just by connecting them to a Laboratory Information Management System (LIMS) or a stand alone computer. The Windows® printer driver technology enables Tissue-Tek AutoWrite Printers to be connected to any Windows based program or LIMS.

Tissue-Tek AutoWrite offers you:

- Unmatched printing quality with the new and improved printing system
- Different type/different colour cassettes printed simultaneously
- Two-dimensional bar coding for easy and reliable identification of cassettes
- Convenient loading with the stacked cassettes, offered in all colours and types
- Fast unloading with an unload module
- Continuous printing during the day

Item code Description

8030	Tissue-Tek® AutoWrite® Cassette Printer 100-240 V, 50/60 Hz
8032	Tissue-Tek® AutoWrite® Unload Station Cassette
8038N	Tissue-Tek® AutoWrite® Curing Lamp
8040	Tissue-Tek® AutoWrite® Slide Magazines (3/pcs)
8041	Tissue-Tek® AutoWrite® Slide Bin
8042	Tissue-Tek® AutoWrite® Cassette Magazines (3/pcs)
8043	Tissue-Tek® AutoWrite® Cassette Chute
8044	Tissue-Tek® AutoWrite® Slide Tray (for item 8033)
8046	Tissue-Tek® AutoWrite® Cassette Tray (for item 8032)
8047	Tissue-Tek® AutoWrite® 6-magazine Slide Holder
8048	Tissue-Tek® AutoWrite® 6-magazine Cassette Holder
8050	Tissue-Tek® AutoWrite® Cleaning Foam Swaps; 25/pcs
8051	Tissue-Tek® AutoWrite® Ink Cartridge Kit; 280 mL
SC-8030-G	Service Agreements Tissue-Tek® AutoWrite® Cassette Printer Gold
SC-8030-P	Service Agreements Tissue-Tek® AutoWrite® Cassette Printer Platinum
SC-8030-S	Service Agreements Tissue-Tek® AutoWrite® Cassette Printer Silver
SC-8032-G	Service Agreements Tissue-Tek® AutoWrite® Cassette Unload station Gold
SC-8032-P	Service Agreements Tissue-Tek® AutoWrite® Cassette Unload station Platinum
SC-8032-S	Service Agreements Tissue-Tek® AutoWrite® Cassette Unload station Silver







Item code	Description
8117	Stacks Tissue-Tek® Uni-Cassette® Orange Burn; 400/pcs
8118	Stacks Tissue-Tek® Uni-Cassette® Lilac; 400/pcs
8119	Stacks Tissue-Tek® Uni-Cassette® Gold; 400/pcs
8120	Stacks Tissue-Tek® Uni-Cassette® Aqua; 400/pcs
8135	Stacks Tissue-Tek® Uni-Cassette® Red; 400/pcs
8153	Stacks Tissue-Tek® Uni-Cassette® Tan; 400/pcs
8154	Stacks Tissue-Tek® Uni-Cassette® Yellow; 400/pcs
8155	Stacks Tissue-Tek® Uni-Cassette® Pink; 400/pcs
8156	Stacks Tissue-Tek® Uni-Cassette® Green; 400/pcs
8157	Stacks Tissue-Tek® Uni-Cassette® Blue; 400/pcs
8158	Stacks Tissue-Tek® Uni-Cassette® Orange; 400/pcs
8170	Stacks Tissue-Tek® Uni-Cassette® White; 400/pcs
8045	Stacks Tissue-Tek® Uni-Cassette® Biopsy Red; 400/pcs
8086	Stacks Tissue-Tek® Uni-Cassette® Biopsy White; 400/pcs
8087	Stacks Tissue-Tek® Uni-Cassette® Biopsy Blue; 400/pcs
8088	Stacks Tissue-Tek® Uni-Cassette® Biopsy Yellow; 400/pcs
8089	Stacks Tissue-Tek® Uni-Cassette® Biopsy Pink; 400/pcs
8090	Stacks Tissue-Tek® Uni-Cassette® Biopsy Orange; 400/pcs
8172	Stacks Tissue-Tek® Uni-Cassette® Biopsy Grey; 400/pcs
8174	Stacks Tissue-Tek® Uni-Cassette® Biopsy Green; 400/pcs

Item code	Description
8125	Stacks Tissue-Tek® Embedding Cassette Tan; 800/pcs
8126	Stacks Tissue-Tek® Embedding Cassette Orange Burn; 800/pcs
8127	Stacks Tissue-Tek® Embedding Cassette Lilac; 800/pcs
8128	Stacks Tissue-Tek® Embedding Cassette Gold; 800/pcs
8129	Stacks Tissue-Tek® Embedding Cassette Aqua; 800/pcs
8179	Stacks Tissue-Tek® Embedding Cassette Yellow; 800/pcs
8182	Stacks Tissue-Tek® Embedding Cassette Pink; 800/pcs
8183	Stacks Tissue-Tek® Embedding Cassette Green; 800/pcs
8184	Stacks Tissue-Tek® Embedding Cassette Blue; 800/pcs
8185	Stacks Tissue-Tek® Embedding Cassette Orange; 800/pcs
8187	Stacks Tissue-Tek® Embedding Cassette White; 800/pcs
8191	Stacks Tissue-Tek® Embedding Cassette Clear; 800/pcs
8199	Stacks Tissue-Tek® Embedding Cassette Grey; 800/pcs

Consumables, Services & Accessories Sakura iDent™

Item code	Description
8057	iDent™ Silk Print Ribbon
SC-8055-G	Service Agreements iDent™ Cassette Printer Gold
SC-8055-P	Service Agreements iDent™ Cassette Printer Platinum
SC-8055-S	Service Agreements iDent™ Cassette Printer Silver
SC-8056-G	Service Agreements iDent™ Slide Printer Gold
SC-8056-P	Service Agreements iDent™ Slide Printer Platinum
SC-8056-S	Service Agreements iDent™ Slide Printer Silver

3. Tissue Processing

Continuous Rapid Tissue Processor

Tissue-Tek Xpress® x120

Vacuum Infiltration Processors

Tissue-Tek VIP® 6 AI

Histo-Tek® VP1™

Tissue-Tek® Tissue Clear® Xylene Substitute

Tissue-Tek® Paraffin Wax



Tissue-Tek Xpress® x120 Continuous Rapid Tissue Processor



SMART Automation Powered by Sakura

Specifications

Throughput	Up to 120 specimens per hour
Dimensions	W x D x H) 170 x 71 x 163 cm
Weight	460 kg
Retorts	
Load station	1 station
Microwave stations	2 retorts
Vacuum stations	2 retorts
Unload stations	2 stations
Capacity	
Continuous loading	Up to 40 cassettes, every 20 minutes
Unloading capacity	Up to 80 cassettes
Processing time	60 minutes (standard) or 120 minutes (extended)
Temperature Ranges	
Microwave stations	61°C 2°C
Vacuum stations	65°C 2°C
Display	800 x 600 pixel colour touch screen LCD display
Software	Process Monitor Screen Manual and Auto start Reagent Management System with counter for cassette or runs standard (1 hour) or extended (2 hours) program

Tissue-Tek Xpress® x120 Continuous Rapid Tissue Processor

The advanced automation of the Tissue-Tek Xpress® Continuous Rapid Tissue Processor continues with the next generation of the Xpress platform: the only rapid tissue processor that actually speeds up the process. With the improved reagent system, enhanced QC possibilities and software options, the histopathology laboratory will achieve new levels of speed in processing, with an hourly throughput of up to 120 specimens. The Xpress x120 uses an innovative, low-wattage microwave technology, improved, molecular-friendly reagents and traditional vacuum infiltration techniques to provide consistent, superior results in record time. The speed and continuous throughput of the Tissue-Tek Xpress® x120 allow an even distribution of cases throughout the day, making workloads more manageable. Specimen slides now make their way to the pathologist faster than ever, enabling same-day diagnosis and thus drastically reducing patient stay and anxiety.

In addition, the process without formalin and xylene employed by the Tissue-Tek Xpress x120 adds a crucial advantage to the field of molecular pathology. The Tissue-Tek Xpress x120 reagents preserve DNA, RNA and proteins in the paraffin block, eliminating the need to use fresh tissue for molecular studies. The reagents provide excellent morphology, sharp nuclear detail and crisp cellular images equal to or better than conventional tissue processing. Compatible with special staining and immunohistochemistry methods, these reagents can often eliminate the need for antigen retrieval.

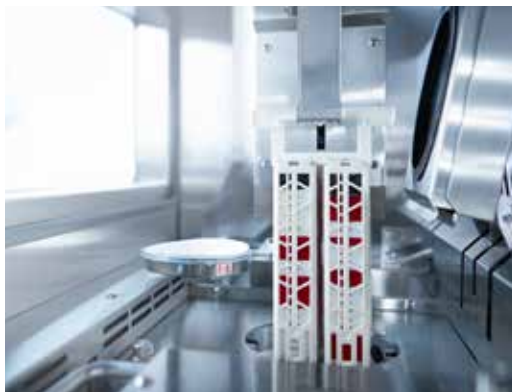
The Tissue-Tek Xpress x120 is the only platform offering you:

- Consistent processing in 1 hour
- An efficient, manageable, continuous workflow
- Same day results by real reduction of turn-around time
- Reduction of reagent usage up to 80%
- Formalin- and xylene-free fixation and processing

Tissue-Tek® iSupport™ Powered by Sakura

Item code	Description
8022	License Tissue-Tek® iSupport™
8023	License Tissue-Tek® iSupport™ (extra user)





Item code	Description
7103	Tissue-Tek Xpress® 40-Cassette Basket with Handle and Lid
7104	Tissue-Tek Xpress® 40-Cassette Basket Lid
7106	Tissue-Tek Xpress® Tray Liners; 100/pcs
7107	Tissue-Tek Xpress® Activated Carbon Filter for x120
6160	Tissue-Tek Xpress® Activated Carbon Filter for x50
7108	Tissue-Tek Xpress® Loading Station Container with Lid
7109	Tissue-Tek Xpress® Basket Transportation Tray
7115	Tissue-Tek Xpress® Pre-Processing Solution
7120	Tissue-Tek Xpress® Molecular Fixative
7730	Tissue-Tek Xpress® x120 Reagent Set; 4/pcs
7760	Tissue-Tek Xpress® x50 Reagent Set; 2/pcs
1550	Tissue-Tek® Scraper, large
4800	Tissue-Tek® Accu-Edge® Grossing Board (43 x 29 x 3 cm)
4802	Tissue-Tek® Accu-Edge® Grossing Wells (34 x 9 x 3 cm)
4803	Tissue-Tek® Accu-Edge® Grossing Fork 1.5 mm
4804	Tissue-Tek® Accu-Edge® Grossing Fork 2.0 mm
4807	Tissue-Tek® Accu-Edge® Grossing Fork 2.5 mm
4814	Tissue-Tek® Accu-Edge® Cleaning Brush
4846	Tissue-Tek® Accu-Edge® Tamper Set (Large + Small)
4847	Tissue-Tek® Accu-Edge® Gauge Set
4223	Tissue-Tek® Biopsy Bags (30 x 50 mm); 1.000/pcs
4224	Tissue-Tek® Biopsy Bags (45 x 65 mm); 500/pcs
4785	Accu-Edge® Trimming Blade 130 mm
4786	Accu-Edge® Trimming Knife Handle 130 mm
4791	Tissue-Tek® Accu-Edge® Dissecting Scalpel Handle
4792	Tissue-Tek® Accu-Edge® Dissecting Scalpel Blades F61, Curved Tip
4793	Tissue-Tek® Accu-Edge® Dissecting Scalpel Blades F62, Pointed Tip
SA-7722-UT	User Training Tissue-Tek Xpress® x120
SA-7722P-UT	User Training Tissue-Tek Xpress® x120 including Paraform
SC-7722-G	Service Agreements Tissue-Tek Xpress® x120 Gold
SC-7722-P	Service Agreements Tissue-Tek Xpress® x120 Platinum
SC-7722-S	Service Agreements Tissue-Tek Xpress® x120 Silver

Item code	Description
7720	Tissue-Tek Xpress® x120 Continuous Rapid Tissue Processor 115 V, 50/60 Hz
7721	Tissue-Tek Xpress® x120 Continuous Rapid Tissue Processor 100 V, 50/60 Hz
7722	Tissue-Tek Xpress® x120 Continuous Rapid Tissue Processor 230 V, 50/60 Hz

Tissue-Tek VIP® 6 AI Vacuum Infiltration Processor



Specifications

Capacity	Up to 300 cassettes
Dimensions	
Dimensions (W x D x H)	61 x 68 x 133 cm
Weight	175 kg
Reagent Reservoirs	13 (including waste and cleaning)
Bulk Reservoirs	2 fixed (10.8 L each)
Paraffin Reservoirs	4
Waste Containers	2 (1 reagent and 1 paraffin wax)
Reagent Management	
System	3 reagents including paraffin wax
Level Sensors	4 (150-cassettes, 300-cassettes, cleaning and overflow)
Display	Colour Touch Screen

Tissue-Tek® iSupport™ Powered by Sakura

Item code	Description
8022	License Tissue-Tek® iSupport™
8023	License Tissue-Tek® iSupport™ (extra user)

Tissue-Tek VIP® 6 AI Vacuum Infiltration Processor

With the new reagent management system, Sakura sets new standards for reliability, safety and convenience in traditional tissue processing, with the provision of the 6th generation of market leading Tissue-Tek VIP® technology.

With the Reagent Management System, including 10.8L bulk containers, reagent and paraffin transfer, automated paraffin wax disposal, a solution manager and true intuitive software, Sakura continues to exceed what you expect from the latest generation traditional tissue processors by making the system easier to use, with increased user safety whilst not compromising on high quality processing and reliability.

The addition of unmatched features, to the most reliable traditional tissue processor, will give increased value to the process and operations of your laboratory.

The Tissue-Tek VIP 6 AI Vacuum Infiltration Processor offers you:

- Confidence of gold standard technology
- Validated protocols providing results of ultimate quality
- Exceptional patient-sample and staff safety
- Outstanding reliability and longevity

Item code	Description
6040	Tissue-Tek VIP® 6 AI 100 V, 50/60 Hz
6041	Tissue-Tek VIP® 6 AI 115 V, 50/60 Hz
6042	Tissue-Tek VIP® 6 AI 230 V, 50/60 Hz
1550	Tissue-Tek® Scraper, Large
6034	Tissue-Tek® Scraper, Small
5265	Tissue-Tek VIP® 150- Cassette Basket with Dividers and Handles
5266	Tissue-Tek VIP® 75- Cassette Basket with Dividers and Handles
5267	Tissue-Tek VIP® 150- Cassette Baskets with Dividers
5268	Tissue-Tek VIP® 75- Cassette Baskets with Dividers
5269	Tissue-Tek VIP® Basket Handles for 150- Cassette Basket (5267)
5270	Tissue-Tek VIP® Basket Handles for 75- Cassette Basket (5268)
6035	Tissue-Tek VIP® Reagent Bottle, Complete, 1/pcs
6036	Tissue-Tek VIP® 1 Set of Bottle Labels, 10/pcs
6045	Tissue-Tek VIP® 1 Set of Paraffin Waste Bags, 12/pcs





Item code Description

6160	Tissue-Tek VIP® Activated Carbon Filter, 2/pcs
7109	Tissue-Tek VIP® Basket Transportation Tray

SA-6042-UT	User Training Tissue-Tek VIP® 6 AI
SC-6042-G	Service Agreements Tissue-Tek VIP® 6 AI Gold
SC-6042-P	Service Agreements Tissue-Tek VIP® 6 AI Platinum
SC-6042-S	Service Agreements Tissue-Tek VIP® 6 AI Silver

**Consumables & Accessories
Tissue-Tek VIP®**

Item code Description

4663	Tissue-Tek VIP® K-series Activated Carbon Filter
4899	Tissue-Tek VIP® E-series/5 Activated Carbon Cartridge
5264	Tissue-Tek VIP® 5 Basket Transport Tray
5271	Tissue-Tek VIP® 5 Basket Dividers Set
5272	Tissue-Tek VIP® 5 Reagent Bottle Complete with Attachments
5273	Tissue-Tek VIP® 5 Etikettenaufkleber/Behälter
5274	Tissue-Tek VIP® 5 Paraffin Container
5275	Tissue-Tek VIP® 5 Displacement Blocks

Histo-Tek® VP1™ Vacuum Infiltration Processor



Histo-Tek® VP1™ Vacuum Infiltration Processor

Sakura Finetek has been providing high quality and reliable tissue processing for more than 50 years, worldwide. The Histo-Tek® VP1™ uses Sakura's know-how to give users high quality tissue processing simply and safely.

Item code Description

1700	Histo-Tek® VP1™; 100V, 50/60HZ
1550	Tissue-Tek® Scraper, large
1705	Tissue-Tek VIP® Complete reagent bottle, 12 each
1706	Tissue-Tek VIP® Basket with handle (150 cassette size), 2 each
7109	Tissue-Tek VIP® Basket transport tray, 1 each
6160	Tissue-Tek VIP® Activated carbon filter, 2/case, 1 set

Optional accessories

6506	Tissue-Tek® Duct hose set (38mm OD), 1 each
6507	Tissue-Tek® Duct hose set (75mm OD), 1 each

Contact your local distributor for availability

Product specifications

Capacity	Maximum 300 cassettes
Dimensions (W x D x H)	55 x 60 x 133 cm
Weight	130 kg
Reagent reservoirs	12 (including waste and cleaning)
Paraffin reservoirs	4
Fume control	Activated carbon filter and condenser
Mixing	Pump-in and pump-out
Screen	10.4 inch color LCD, touch screen
Program memory	10 user-defined programs
Password protection	3 levels

Tissue-Tek® Tissue-Clear® Xylene Substitute



Tissue-Tek® Tissue-Clear® is a xylene substitute, which differs by not irritating skin or mucosa and being odorless. Furthermore its low risk of igniting makes it safer to work with. Tissue-Tek Tissue-Clear is compatible with Tissue-Tek® Glas™ Tissue-Mount™ for glass coverslipping.

Item code	Description
1426	Tissue-Tek® Tissue-Clear® 10 L Xylene Substitute
1466	Tissue-Tek® Tissue-Clear® 5 L Xylene Substitute
1472	Tissue-Tek® Tissue-Clear® 200 L Xylene Substitute

Tissue-Tek® Paraffin Wax



The range of Tissue-Tek® Paraffin Wax consists of high quality products, is available in various types, packing sizes and temperature ranges, and is 100% DMSO-free. All Tissue-Tek Paraffin Waxes outperform other waxes on shrinkage, immersion and cutting results.

Item code	Description
4653	Tissue-Tek® Paraffin Wax TEK II, 1x10 kg, 54 - 57 °C
4656	Tissue-Tek® Paraffin Wax TEK II, 4 x 2,5 kg, 54 - 57 °C
4659	Tissue-Tek® Paraffin Wax TEK II, 1 x 25 kg, 54 - 57 °C
4508	Tissue-Tek® Paraffin Wax TEK III, 25 kg, 54 - 57 °C
4509	Tissue-Tek® Paraffin Wax TEK III, 10 kg, 54 - 57 °C
4511	Tissue-Tek® Paraffin Wax TEK III, 4 x 2,5 kg, 54 - 57 °C
4523	Tissue-Tek® Paraffin Wax TEK IV, 4 x 2.5 kg, 54 - 57 °C
4524	Tissue-Tek® Paraffin Wax TEK IV, 1 x 10 kg, 54 - 57 °C
4525	Tissue-Tek® Paraffin Wax TEK IV, 1 x 25 kg, 54 - 57 °C
7052	Tissue-Tek® Paraform® Processing/ Embedding Medium 8 x 1 kg, 56-58 °C

TDE™ 30 Decalcifier System

Item code	Description
1428	Reagent TDE™ 30 Decalcifier
1460	Electrodes TDE™ 30 Decalcifier; 2/pcs



4. Tissue Embedding

Automated Embedding System

Tissue-Tek AutoTEC® a120

Tissue-Tek® Paraform® Cassettes

Tissue-Tek® Paraform® Tissue Orientation Gels

Tissue Embedding Console System

Tissue-Tek® TEC™ 5

Tissue-Tek® TEC™ Plus Cryo Console

Tissue-Tek® Cassettes

Tissue-Tek® Biopsy Bags

Tissue-Tek® Base Mold System

Tissue-Tek AutoTEC® a120 & Tissue-Tek® Paraform® Automated Embedding System and Sectionable Cassette System



SMART Automation Powered by Sakura

Specifications

Throughput	Up to 120 Tissue-Tek® Paraform® cassettes per hour
Dimensions	
W x D x H	120 x 75 x 175 cm
Weight	530 kg
Number of Stations	
Load	4 magazines
Unload	4 magazines
Base Molds	
	8 Tissue-Tek® Paraform® Standard Cassettes
	8 Tissue-Tek® Paraform® Biopsy/ Orientation Cassettes
	8 Tissue-Tek® Paraform® 13 x 13 Biopsy Cassettes
Capacity	
Loading	120 Tissue-Tek Paraform Cassettes, continuously loading
Unloading	120 Tissue-Tek Paraform Cassettes, continuously unloading
Paraffin wax	Up to 5,0 L
Temperature	
Paraffin Wax	60 - 70 °C (1°C increments)

Tissue-Tek AutoTEC® a120 Automated Embedding System

The Tissue-Tek AutoTEC® a120 Automated Embedding System is the synonym for real automation. Combined with the unique Tissue-Tek® Paraform® Sectionable Cassette System and Tissue-Tek® Paraform® Tissue Orientation Gels, it provides a complete system to automate your embedding. Automated embedding can solve staffing problems, eliminate orientation errors and prevent the loss of tissue samples throughout the process.

The Tissue-Tek AutoTEC a120 can embed 120 Tissue-Tek Paraform Cassettes per hour. It is a real workhorse, creating a gentle working environment in the histopathology laboratory, and fits perfectly with the revolutionary, continuous rapid tissue processor, Tissue-Tek Xpress® x120.



The Tissue-Tek AutoTEC a120 Automated Embedding System and Tissue-Tek Paraform Sectionable Cassette System offer you:

- The system to fully automate your embedding
- Locked orientation from grossing through sectioning
- Continuous loading of your blocks after processing
- A throughput of 120 blocks per hour, matching the capacity of the Tissue-Tek Xpress x120

Item code	Description
7090	Tissue-Tek AutoTEC® a120 Automated Embedding System; 100 V, 50/60 Hz
7093	Tissue-Tek AutoTEC® a120 20-Cassette Magazine; 6/pcs
7094	Tissue-Tek AutoTEC® a120 Cassette Magazine Retainer; 4/pcs
7095	Tissue-Tek AutoTEC® a120 Output Door; 2/pcs
7062	Tissue-Tek AutoTEC® a120 Paraffin Inner Tray #1; 1 each





Tissue-Tek® Paraform® Sectionable Cassette System

The novel, innovative Tissue-Tek® Paraform® Sectionable Cassette System eliminates the need to perform manual steps at the embedding centre. Using Tissue-Tek Paraform in combination with the Tissue-Tek AutoTEC Automated Embedding System allows the automation of the time consuming, manual process of embedding. The unique Tissue-Tek Paraform Cassette System consists of an outer frame that is compatible with all commercially available cassette printers and microtome chucks, and an inner cassette, which is made of Paraform material. The cassette preserves the orientation of the tissue sample from grossing through sectioning, eliminating the risk of orientation errors or losing tissue samples. A unique feature of Tissue-Tek Paraform is that it is easy to section, just like paraffin wax.

The Tissue-Tek Paraform Cassette is compatible with all existing laboratory methods and manual embedding processes. In addition, it can accommodate a variety of specimens, even those requiring special orientation (e.g. skin or arterial specimens), in one of the three available cassette types: Standard, Biopsy and Biopsy 13 x 13.

Item code	Description
7063	Tissue-Tek AutoTEC® a120 Paraffin Inner Tray #2; 2/pcs
7052	Tissue-Tek® Paraform® Processing/Embedding Medium; 8 x 1 kg
7005	Tissue-Tek AutoTEC® 32-Cassette Magazine (for VIP®), 4/cs
7006	Tissue-Tek AutoTEC® 20-Cassette Magazine (for Xpress®), 4/cs
7007	Tissue-Tek AutoTEC® Magazine Handle, 6/cs
7008	Tissue-Tek AutoTEC® Output Door, 2/cs
7010	Tissue-Tek AutoTEC® Disposable Paraffin Trough, 12/cs
7013	Tissue-Tek AutoTEC® Seismic Anchorage Kit
SA-7090-UT	User Training Tissue-Tek AutoTEC® a120
SA-7090P-UT	User Training Tissue-Tek AutoTEC® a120 including Paraform
SC-7090-G	Service Agreements Tissue-Tek AutoTEC® a120 Gold
SC-7090-P	Service Agreements Tissue-Tek AutoTEC® a120 Platinum
SC-7090-S	Service Agreements Tissue-Tek AutoTEC® a120 Silver

Tissue-Tek® iSupport™ Powered by Sakura

Item code	Description
8022	License Tissue-Tek® iSupport™
8023	License Tissue-Tek® iSupport™ (extra user)

Item code	Description
7015	Tissue-Tek® Paraform® Cassette Tamper
7019	Tissue-Tek® Paraform® 13 x 13 Biopsy Cassette; 500/pcs
7020	Tissue-Tek® Paraform® Biopsy Cassette; 500/pcs
7021	Tissue-Tek® Paraform® Standard Cassette; 500/pcs
7026	Tissue-Tek® Paraform® Foam inserts; 500/pcs
7030	Tissue-Tek® Paraform® Frames Aqua; 500/pcs
7031	Tissue-Tek® Paraform® Frames Blue; 500/pcs
7032	Tissue-Tek® Paraform® Frames Grey; 500/pcs
7033	Tissue-Tek® Paraform® Frames Gold; 500/pcs
7034	Tissue-Tek® Paraform® Frames Green; 500/pcs
7035	Tissue-Tek® Paraform® Frames Lilac; 500/pcs
7036	Tissue-Tek® Paraform® Frames Orange; 500/pcs
7037	Tissue-Tek® Paraform® Frames Pink; 500/pcs
7038	Tissue-Tek® Paraform® Frames Red; 500/pcs
7039	Tissue-Tek® Paraform® Frames Tan; 500/pcs
7040	Tissue-Tek® Paraform® Frames White; 500/pcs
7041	Tissue-Tek® Paraform® Frames Yellow; 500/pcs



Item code	Description
7070	Stacks Tissue-Tek® Paraform® Frames Aqua; 400/pcs
7071	Stacks Tissue-Tek® Paraform® Frames Blue; 400/pcs
7072	Stacks Tissue-Tek® Paraform® Frames Grey; 400/pcs
7073	Stacks Tissue-Tek® Paraform® Frames Gold; 400/pcs
7074	Stacks Tissue-Tek® Paraform® Frames Green; 400/pcs
7075	Stacks Tissue-Tek® Paraform® Frames Lilac; 400/pcs
7076	Stacks Tissue-Tek® Paraform® Frames Orange; 400/pcs
7077	Stacks Tissue-Tek® Paraform® Frames Pink; 400/pcs
7078	Stacks Tissue-Tek® Paraform® Frames Red; 400/pcs
7079	Stacks Tissue-Tek® Paraform® Frames Tan; 400/pcs
7080	Stacks Tissue-Tek® Paraform® Frames White; 400/pcs
7081	Stacks Tissue-Tek® Paraform® Frames Yellow; 400/pcs



Tissue-Tek® Paraform® Tissue Orientation Gels

The Tissue-Tek® Paraform® Tissue Orientation Gels are hydrogels, specially designed for the orientation of tissue specimens prior of automatic embedding with the Tissue-Tek AutoTEC a120.

Tissue-Tek Paraform Tissue Orientation Gels can be inserted into a Tissue-Tek® Paraform® Biopsy Cassette (7020). Each Gel holds one or more small human or animal tissue specimens and maintains the orientation of the tissue during processing and embedding.

Item code	Description
7015	Tissue-Tek® Paraform® Cassette Tamper
7019	Tissue-Tek® Paraform® 13 x 13 Biopsy Cassette; 500/pcs
7020	Tissue-Tek® Paraform® Biopsy Cassette; 500/pcs
7021	Tissue-Tek® Paraform® Standard Cassette; 500/pcs
7045	Tissue-Tek® Paraform® Biopsy Gels; 10 x 50pcs
7046	Tissue-Tek® Paraform® 2-Lane Gels; 10 x 50pcs
7047	Tissue-Tek® Paraform® 1-mm Punch Gels; 10 x 50pcs
7048	Tissue-Tek® Paraform® 2-mm Punch Gels; 10 x 50pcs
7049	Tissue-Tek® Paraform® 3-mm Punch Gels; 10 x 50pcs
7026	Tissue-Tek® Paraform® Foam Inserts; 500/pcs
7055	Tissue-Tek® Paraform® Standard Base Mold; 12/pcs
7056	Tissue-Tek® Paraform® Biopsy Base Mold; 12/pcs
7057	Tissue-Tek® Paraform® Biopsy 13 x 13 Base Mold; 12/pcs
7089	Accu-Edge® Paraform® Disposable Microtome Blade; 50/pcs

Tissue-Tek® TEC™ 5 Tissue Embedding Console System



Specifications

Dimensions	
Embedding Console	59 x 62 x 38 cm
Cryo Console	33 x 59 x 38 cm
Cooling Plate	31 x 38 cm
Weight	
Embedding Console	20 kg
Cryo Console	20 kg
Capacity	
Paraffin Chamber	4 L
Thermal Chambers	1.8 L
Cooling Plate	60 cassettes
Temperature Range	
Paraffin Chamber	50°C - 70°C
Thermal Chambers	50°C - 70°C
Hot Plates & Forceps Wells	50°C - 70°C
Cooling Plate	-10°C - 0°C

Item code	Description
5100	Tissue-Tek® TEC™ 5 Tissue Embedding Console System; 115 V, 60 Hz
5229	Tissue-Tek® TEC® 5 Tissue Embedding System; 230 V, 50 Hz
1550	Tissue-Tek® Scraper
1551	Tissue-Tek® Large Tamper
1552	Tissue-Tek® TEC™ Small Tamper
1553	Tissue-Tek® TEC™ Lamp Bulb
5781	Tissue-Tek® TEC™ 150-Cassette Transfer Tray
5782	Tissue-Tek® TEC™ 75-Cassette Transfer Tray
5783	Tissue-Tek® TEC™ Base Mold Dividers
5784	Tissue-Tek® TEC™ Magnifying Glass
5785	Tissue-Tek® TEC™ Foot Pedal Switch
5787	Tissue-Tek® TEC™ Removable Hot Plate

SA-5229-UT	User Training Tissue-Tek® TEC™ 5
SC-5229-G	Service Agreements Tissue-Tek® TEC™ 5 Gold
SC-5229-P	Service Agreements Tissue-Tek® TEC™ 5 Platinum
SC-5229-S	Service Agreements Tissue-Tek® TEC™ 5 Silver

Tissue-Tek® TEC™ 5 Tissue Embedding Console System

The Tissue-Tek® TEC™ 5 Tissue Embedding Console System consists of two modules that together create an ergonomic workstation for the production of paraffin blocks. The user can position the individual modules from either left to right or right to left, depending on personal preference. The work surfaces of both modules are at the same height and thus the specimens can be transferred easily from one side to the other. The system is fully programmable, with automatic start-up and shutdown capability and precise temperature control of all areas. The capacity of the workspace is 10 cassettes at each side of the dispensing control unit. The electric forceps can be connected easily.



Tissue-Tek® TEC™ Plus Cryo Console

The Tissue-Tek® TEC™ Plus Cryo Console consists of the cooling plate to cool and solidify paraffin blocks after completion of tissue embedding, and the electrical control section and control panel to control and monitor the temperature for the cooling plate.

Specifications

Dimensions	
W x D x H	38 x 56 x 38 cm
Weight	
	22 kg
Capacity	
	Up to 60 blocks
Temperature Range	
	-10°C - 0°C

Item code Description

5249	Tissue-Tek® TEC™ Plus Cryo Console; 230 V, 50 Hz
------	--





Tissue-Tek® Uni-Cassette® Biopsy Cassette System

The Tissue-Tek® Uni-Cassette® Biopsy Cassette is designed to provide specimen identification and security from the grossing bench to the paraffin block and is suitable for biopsies, thanks to its fine pores (1 mm²). Each cassette is optimised for maximum fluid exchange during the processing cycle. When utilised with appropriately sized base molds, the cassette becomes the supporting structure of the paraffin block during embedding. The cassettes come with an attached lid. Available in eight colours.

Item code	Description
4045	Tissue-Tek® Uni-Cassette® Biopsy Red; 500/pcs
4086	Tissue-Tek® Uni-Cassette® Biopsy White; 500/pcs
4087	Tissue-Tek® Uni-Cassette® Biopsy Blue; 500/pcs
4088	Tissue-Tek® Uni-Cassette® Biopsy Yellow; 500/pcs
4089	Tissue-Tek® Uni-Cassette® Biopsy Pink; 500/pcs
4090	Tissue-Tek® Uni-Cassette® Biopsy Orange; 500/pcs
4172	Tissue-Tek® Uni-Cassette® Biopsy Grey; 500/pcs
4174	Tissue-Tek® Uni-Cassette® Biopsy Green; 500/pcs



Tissue-Tek® Uni-Cassette®

The Tissue-Tek® Uni-Cassette® is designed to provide specimen identification and security from the grossing bench to the paraffin block. Each cassette is optimised for maximum fluid exchange during the processing cycle. When utilised with appropriately sized base molds, the cassette becomes the supporting structure of the paraffin block during embedding.

Has virtually unlimited applications, including identifying surgical specimens from autopsies, STAT biopsies and frozen sections. The cassettes come with an attached lid. Available in 12 colours.

Item code	Description
4117F	Tissue-Tek® Uni-Cassette® Orange Burn; 2000/pcs
4118F	Tissue-Tek® Uni-Cassette® Lilac; 2000/pcs
4119F	Tissue-Tek® Uni-Cassette® Gold; 2000/pcs
4120F	Tissue-Tek® Uni-Cassette® Aqua; 2000/pcs
4135F	Tissue-Tek® Uni-Cassette® Red; 2000/pcs
4153F	Tissue-Tek® Uni-Cassette® Tan; 2000/pcs
4154F	Tissue-Tek® Uni-Cassette® Yellow; 2000/pcs
4155F	Tissue-Tek® Uni-Cassette® Pink; 2000/pcs
4156F	Tissue-Tek® Uni-Cassette® Green; 2000/pcs
4157F	Tissue-Tek® Uni-Cassette® Blue; 2000/pcs
4158F	Tissue-Tek® Uni-Cassette® Orange; 2000/pcs
4170	Tissue-Tek® Uni-Cassette® White; 2000/pcs



Tissue-Tek® Processing/Embedding Cassette

The coverless Tissue-Tek® II Processing/Embedding Cassette is designed to provide specimen identification and security from the grossing bench to the permanent paraffin block. Each cassette is optimised for maximum fluid exchange during the processing cycle. When utilised with appropriately sized base molds, the cassette becomes the supporting structure of the paraffin block during embedding. Has virtually unlimited applications, including identifying surgical specimens from autopsies, STAT biopsies and frozen sections. Tissue-Tek® Processing/Embedding Cassette Clear is manufactured from polypropylene. Available in 14 colours.

Item code	Description
4125	Tissue-Tek® Processing/Embedding Cassette Tan; 2000/pcs
4126	Tissue-Tek® Processing/Embedding Cassette Orange Burn; 2000/pcs
4127	Tissue-Tek® Processing/Embedding Cassette Lilac; 2000/pcs
4128	Tissue-Tek® Processing/Embedding Cassette Gold; 2000/pcs
4129	Tissue-Tek® Processing/Embedding Cassette Aqua; 2000/pcs
4130	Tissue-Tek® Processing/Embedding Cassette Red; 2000/pcs
4179	Tissue-Tek® Processing/Embedding Cassette Yellow; 2000/pcs
4182	Tissue-Tek® Processing/Embedding Cassette Pink; 2000/pcs
4183	Tissue-Tek® Processing/Embedding Cassette Green; 2000/pcs
4184	Tissue-Tek® Processing/Embedding Cassette Blue; 2000/pcs
4185	Tissue-Tek® Processing/Embedding Cassette Orange; 2000/pcs
4187	Tissue-Tek® Processing/Embedding Cassette White; 2000/pcs
4191	Tissue-Tek® Processing/Embedding Cassette Clear; 2000/pcs
4199	Tissue-Tek® Processing/Embedding Cassette Grey; 2000/pcs
4194	Tissue-Tek® Processing/Embedding Cassette Metal Cover; 25/pcs



Tissue-Tek® Mega-Cassette™

The Tissue-Tek® Mega-Cassette™ (size 40x25x10 mm) is designed to provide specimen identification and security from the grossing bench to the permanent paraffin block. Suitable for larger tissue samples, thanks to the depth (10 mm). Each cassette is optimised for maximum fluid exchange during the processing cycle. When utilised with appropriately sized base molds, the cassette becomes the supporting structure of the paraffin block during embedding. Cassettes come with an attached lid.

Item code	Description
4166	Tissue-Tek® Mega-Cassette™ Base Mold (for item 4173); 6/pcs
4173	Tissue-Tek® Mega-Cassette™; 750/pcs



Tissue-Tek® Biopsy Bags

Item code	Description
4223	Tissue-Tek® Biopsy Bags (30 x 50 mm); 1.000/pcs
4224	Tissue-Tek® Biopsy Bags (45 x 65 mm); 500/pcs
SA-4699	Cassette Insert paper (66 x 26 mm)
VO-9-3001	Metal Biopsy Insert; 1/pcs (Ø18mm + Ø21mm)





Tissue-Tek® Biopsy 6-Chamber Cassette

The Tissue-Tek® Biopsy 6-Chamber Cassette is designed to separate the different biopsies for the same patient number. The number for patient identification can be written on three sides of the cassette. Together with the Biopsy 6-Chamber Cassette, Sakura offers the Tissue-Tek® Torpedo Shape Base Mold for easy orientation of the tissue sample. Cassettes come with an attached lid. Available in five colours.

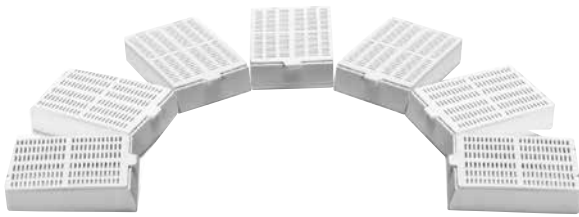
Item code	Description
4067	Tissue-Tek® Torpedo Base Mold for 6-Chamber Cassette (for item 4073 - 4077); 12/pcs
4073	Tissue-Tek® Biopsy 6-Chamber Cassette White; 1.000/pcs
4074	Tissue-Tek® Biopsy 6-Chamber Cassette Grey; 1.000/pcs
4075	Tissue-Tek® Biopsy 6-Chamber Cassette Yellow; 1.000/pcs
4076	Tissue-Tek® Biopsy 6-Chamber Cassette Green; 1.000/pcs
4077	Tissue-Tek® Biopsy 6-Chamber Cassette Blue; 1.000/pcs



Tissue-Tek® Mesh Biopsy Cassette

The Tissue-Tek Mesh Biopsy Cassette is an innovative concept for the safe and economical processing of biopsies. The Tissue-Tek Mesh Biopsy Cassette allows you to save time without having to use filter paper, sponges or bags to avoid carry-over. The operating efficiency is evidenced by such additional applications as filtration or use of gel without filter paper. The cassettes come with an attached lid.

Item code	Description
4306	Tissue-Tek® Mesh Biopsy Cassette White; 500/pcs
4307	Tissue-Tek® Mesh Biopsy Cassette Pink; 500/pcs
4308	Tissue-Tek® Mesh Biopsy Cassette Yellow; 500/pcs
4309	Tissue-Tek® Mesh Biopsy Cassette Green; 500/pcs
4312	Tissue-Tek® Mesh Biopsy Cassette Blue; 500/pcs
4313	Tissue-Tek® Mesh Biopsy Cassette Grey; 500/pcs
4314	Tissue-Tek® Mesh Biopsy Cassette Red; 500/pcs



Tissue-Tek® Super Mega-Cassette™

The Tissue-Tek® Super Mega-Cassette™ is designed to provide specimen identification and security from the grossing bench to the permanent paraffin block. The Tissue-Tek Super Mega-Cassette is suitable for larger and extra large tissue samples, thanks to the size of 65 x 50 x 18 mm, and is optimised for maximum fluid exchange during the processing cycle. When utilised with a specially designed base mold, the cassette becomes the supporting structure of the paraffin block during embedding. Cassettes come with an attached lid. For clamping the Tissue-Tek Super Mega-Cassette on to your microtome a Clamp adapter is available.

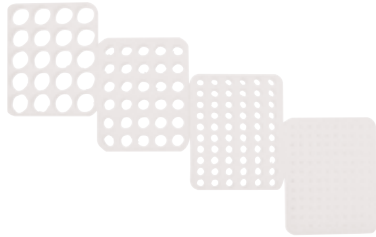
Item code	Description
7840	Tissue-Tek® Super Mega-Cassette™ Base Mold 36 x 36 x 10 mm, 5/pcs
7841	Tissue-Tek® Super Mega-Cassette™ Base Mold 60 x 45 x 15 mm, 5/pcs
1445	Tissue-Tek® Super Mega-Cassette™ Clamp Adapter for SRM series
7820	Tissue-Tek® Super Mega-Cassette™ White; 100/pcs



Tissue-Tek® Base Mold System

Tissue-Tek Stainless-Steel Base Mold System is designed for use with Tissue-Tek Uni-Cassette and Biopsy, Tissue-Tek Processing/Embedding Cassettes, Tissue-Tek Mesh Biopsy Cassettes and Tissue-Tek Biopsy 6-Chamber Cassettes. The 5 mm deep molds are made of stainless steel and are reusable. They have extended fins to prevent tipping and to provide a gripping surface for easy handling. The flat, metal bottom allows maximum heat/cold exchange to enhance embedding and releasing the paraffin block.

Item code	Description
4067	Tissue-Tek® Torpedo Base Mold for 6-Chamber Cassette (for item 4073 - 4077); 12/pcs
4161	Tissue-Tek® Base Mold 7 x 7 x 5 mm; 12/pcs
4162	Tissue-Tek® Base Mold 15 x 15 x 5 mm; 12/pcs
4163	Tissue-Tek® Base Mold 24 x 24 x 5 mm; 12/pcs
4164	Tissue-Tek® Base Mold 30 x 24 x 5 mm; 12/pcs
4165	Tissue-Tek® Base Mold 37 x 24 x 5 mm; 12/pcs
4166	Tissue-Tek® Mega-Cassette™ Base Mold (for item 4173); 6/pcs
7055	Tissue-Tek® Paraform® Standard Base Mold; 12/pcs
7056	Tissue-Tek® Paraform® Biopsy/Orientation Base Mold; 12/pcs
7057	Tissue-Tek® Paraform® Biopsy 13 x 13 Base Mold; 12/pcs
7840	Tissue-Tek® Mega-Cassette™ Base Mold 36 x 36 x 10 mm, 5/pcs
7841	Tissue-Tek® Mega-Cassette™ Base Mold 60 x 45 x 15 mm, 5/pcs



Tissue-Tek® Quick-Ray™ Tissue Micro Array System

Item code	Description
8011	Tissue-Tek® Quick-Ray™ Punch Guide 1mm
8012	Tissue-Tek® Quick-Ray™ Punch Tip 1mm
8013	Tissue-Tek® Quick-Ray™ Punch Tip 2mm
8014	Tissue-Tek® Quick-Ray™ Punch Tip 3mm
8015	Tissue-Tek® Quick-Ray™ Punch Tip 5mm
8016	Tissue-Tek® Quick-Ray™ Recipient Block 1mm
8017	Tissue-Tek® Quick-Ray™ Recipient Block 2mm
8018	Tissue-Tek® Quick-Ray™ Recipient Block 3mm
8019	Tissue-Tek® Quick-Ray™ Recipient Block 5mm
8020	Tissue-Tek® Quick-Ray™ Recipient Base Mold, 3/cs

 **Tissue**
SAKURA



sue-Tek Au

5. Microtomy

Automated Microtome

Tissue-Tek AutoSection®

Rotary Microtome

Accu-Cut® SRM™ 200

Slides & Coverslips

Tissue-Tek® Glas™ Microscope Slides

Tissue-Tek® AutoWrite® Non-Adhesive Slides

Tissue-Tek® AutoWrite® Adhesive Slides

Tissue-Tek® AutoWrite® Advanced Adhesive Slides

Tissue-Tek® SmartWrite® Slides

Tissue-Tek® Glas™ Coverslips

Tissue-Tek® Super Mega Slides & Coverslips

Tissue-Tek® Glas™ g2 Coverslips & Easy Holder

Accu-Edge® Disposable Microtome Blades

Tissue-Tek® Cold Plate



Tissue-Tek AutoSection® Automated Microtome



SMART Automation Powered by Sakura

Specifications

Dimensions	W 42 x D 67 x H 44 cm
Weight	54 kg
Specimen orientation	AutoAlign™ Technology offering 3D Automated Chuck & Alignment
Horizontal & Vertical	0 – 5 degree (automated)
Rotation	0, 90 degree (manual)
Programs	16 (incl. block size, speed, thickness)
Macros (user defined)	One for each program, up to 15 steps
Trimming	AutoTrim™ Technology
Cutting speed	10 – 450 mm/s
Trimming thickness	1 – 200 µm
Section thickness	0.5 – 100 µm
Vertical cutting stroke	13, 25, 35, 70 mm
Hor. specimen advance	10 mm
Specimen retraction range	0 – 100 µm
Specimen feed speed	1300 µm/s
Screen	Color LCD touch screen
Remote	Bluetooth Wireless remote
Data interface	USB 2.0

Tissue-Tek AutoSection®

Building on the success and principles of SMART Automation, Sakura Finetek introduces the next steps in Total Laboratory Automation, Tissue-Tek AutoSection®. The cutting edge technology addresses today's challenges of quality, efficiency and speed.

Quality & patient safety

Precision sectioning and consistent high quality, is now achievable for every technician, every single block and tissue type. The Tissue-Tek AutoSection automatically aligns, trims and sections your blocks, including Tissue-Tek Paraform. The combination of cutting edge technology and razor sharp Accu-Edge® Microtome Blades enables thin, consistent high quality sections. AutoAlign™ technology will precisely orient blocks and dramatically reduce the risk of losing tissue. Another major benefit of automation and stress free microtomy is the reduction of repetitive motion and the increase of staff satisfaction.

Efficiency & speed

Work in a single-piece-flow and increase productivity, by only one touch of a button and scan of a cassette. With AutoTrim™, the core technology of Tissue-Tek Auto-section, blocks are ready for sectioning within seconds, saving valuable production time, in particular with recuts.

Tissue-Tek AutoSection offers you:

- Precise and consistent high-quality sectioning for every technician and tissue type
- Preserves precious tissue of re-cuts due to automated block alignment
- Improved efficiency and speed, due to easy and automated microtomy
- Decreased repetitive strain disorders for users

Item code Description

5000	Tissue-Tek AutoSection® Automated Microtome
5008	Accu-Edge® Low-Profile Blade Holder
5009	Accu-Edge® High-Profile Blade Holder
4658	Tissue-Tek® Waste Collection Bags 250/pcs
7089	Accu-Edge® Paraform® disposable Microtome Blades
SA-5000-UT	User Training Tissue-Tek AutoSection®
SC-5000-G	Service Agreements Tissue-Tek AutoSection® Gold
SC-5000-P	Service Agreements Tissue-Tek AutoSection® Platinum
SC-5000-S	Service Agreements Tissue-Tek AutoSection® Silver



Microtomy

Accu-Cut® SRM™ 200 Rotary Microtome



Specifications

Dimensions	
W x D x H	40.0 x 47.0 x 29.5 cm
Working height	10.5 cm
Weight	29 kg
Section Thickness Range	
Increment	0.5 - 60 µm
	0 - 2 µm (0.5 µm increments)
	2 - 10 µm (1 µm increments)
	10 - 20 µm (2 µm increments)
	20 - 60 µm (5 µm increments)
Coarse Feed Advance	Clockwise
Horizontal Specimen	
Advance	25 mm
Vertical Specimen Stroke	
Length	59 mm
Specimen Retraction	220 µm
Clearance Angle for Blade Holder	
Holder	0 -10°
Specimen Orientation	
Three-axis Orientation	Horizontal: 8°
	Vertical: 8°
	Rotation: 90°
Micron Thickness Setting:	Adjustable with visual display
Trimming Steps:	10 µm, 50 µm
Displacement of Blade Holder Base	
North/South	
Maximum:	55 mm (Vertically)
With all adapters attached:	40 mm
East/West:	45 mm (Horizontally)

Accu-Cut® SRM™ 200

The Accu-Cut® SRM™ 200 Rotary Microtome is a reliable rotary microtome developed for all applications of paraffin and hard specimens in clinical, research and industrial laboratories. This instrument displays extraordinary ergonomic characteristics for comfortable operation while maintaining reproducible precision during sectioning. The Accu-Cut SRM 200 Rotary Microtome has various settings for trimming. The specimen retraction function allows section ribbons to be formed immediately and more easily.

Sakura Finetek offers, together with the Accu-Edge® Disposable Microtome Blades, a full range of cutting edge solutions for microtomy purposes.

The Accu-Cut SRM 200 Rotary Microtome is supplied with a complete package of accessories, so it can be used immediately after installation.

Item code	Description
1429	Accu-Cut® SRM™ 200 Manual Rotary Microtome
1434	Accu-Cut® SRM™ 200 Blade Holder Base Assembly
1469	Accu-Cut® SRM™ 200 Blade Holder for High Profile Disposable Blades
1435	Accu-Cut® SRM™ 200 Blade Holder for Low Profile Disposable Blades
1436	Accu-Cut® SRM™ 200 High-Profile Back Plate (part of item 1469)
1437	Accu-Cut® SRM™ 200 Low-Profile Back Plate (part of item 1435)
1438	Accu-Cut® SRM™ 200 3-Axis Orientation Attachment for Clamp
1439	Accu-Cut® SRM™ 200 Universal Cassette Clamp with Adapter
1440	Accu-Cut® SRM™ 200 Maintenance Kit
1441	Accu-Cut® SRM™ 200 Protective Dust Cover
1442	Accu-Cut® SRM™ 200 Knife Holder N Assembly for Steel Knives
1443	Accu-Cut® SRM™ 200 Non-Orientating Attachment for Clamps
1444	Accu-Cut® SRM™ 200 Specimen Clamp 40 x 40 mm
1445	Tissue-Tek® Super Mega-Cassette™ Clamp Adapter for SRM series
1446	Accu-Cut® SRM™ 200 V-Insert
1447	Accu-Cut® SRM™ 200 Bottle of Oil, Type 405
1468	Accu-Cut® SRM™ 200 200 Waste Tray
SA-1429-UT	User Training Accu-Cut® SRM™ 200
SC-1429-G	Service Agreements Accu-Cut® SRM™ 200 Gold
SC-1429-P	Service Agreements Accu-Cut® SRM™ 200 Platinum
SC-1429-S	Service Agreements Accu-Cut® SRM™ 200 Silver



Tissue-Tek® Glas™ Microscope Slides

Tissue-Tek® Glas™ Microscope Slides provides ready-to-use soda-lime glass slides perfect for everyday laboratory work. These slides are 76 x 26 mm in dimension with approximate thickness of 1,0 mm. The Tissue-Tek Glas slides come in cut edges and ground edges 90° with or without double frosted ends. The frosted ends will allow users to write with a pencil to mark the slides. The Tissue-Tek Glas series is perfect for routine slide work.

The slides are manufactured according to the ISO 8037/1 standard. The slides are supplied in volumes of 2500; 50 packs of 50 slides.

Item code	Description
9531	Tissue-Tek® Glas™ Non-Adhesive Cut Edges; 50 x 50/pcs
9532	Tissue-Tek® Glas™ Non-Adhesive Ground Edges 90°; 50 x 50/pcs
9533	Tissue-Tek® Glas™ Non-Adhesive Ground Edges 90° Frosted; 50 x 50/pcs
9534	Tissue-Tek® Glas™ Non-Adhesive Cut Edges Frosted; 50 x 50/pcs

Tissue-Tek AutoWrite® Non-Adhesive Slides



Tissue-Tek® AutoWrite® Non-Adhesive Slides are designed and manufactured for optimal results with the Tissue-Tek® AutoWrite® Slide Printer and other ink-jet slide printers.

The slides are available in 7 different colors; white, blue, pink, yellow, green, orange and purple. To reduce slides chipping and jamming during use in the slide printers, the slides are ground edges 90° with clipped corners.

The Tissue-Tek AutoWrite Non-Adhesive Slides are manufactured according to ISO 8037/1 standards. The slides are approximately 76 x 26 mm with thickness of 1.0 mm. The slides are supplied in volumes of 2500; 50 packs of 50 slides each.

Item code	AutoWrite® Non-Adhesive Ground Edges 90°
9562	Clipped Corner White; 50 x 50/pcs
9563	Clipped Corner Blue; 50 x 50/pcs
9564	Clipped Corner Pink; 50 x 50/pcs
9565	Clipped Corner Yellow; 50 x 50/pcs
9566	Clipped Corner Green; 50 x 50/pcs
9567	Clipped Corner Orange; 50 x 50/pcs
9568	Clipped Corner Purple; 50 x 50/pcs



Tissue-Tek® Autowrite® Adhesive Slides

Tissue-Tek® AutoWrite® Adhesive Slides are manufactured with silane-coating, creating special charge which increases the adhesion of the tissue to the slide. The slides have the same printing area characteristics as the Non-Adhesive slides, optimised for printing with Tissue-Tek AutoWrite Printer and other ink-jet printers.

These slides are perfect for tests that require extra care when processing, such as cartilage.

Slides are available in 7 different colors; white, blue, pink, yellow, green, orange and purple. The slides will have ground edges 90° with clipped corners.

The Tissue-Tek AutoWrite Adhesive Slides are manufactured according to ISO 8037/1 standards with approximate dimension of 76 x 26 mm and thickness of 1.0 mm. The slides are supplied in volumes of 1440; 20 packs of 72 slides each.

Item code	AutoWrite® Adhesive Ground Edges 90°
9597	Clipped Corner White; 20 x 72/pcs
9598	Clipped Corner Blue; 20 x 72/pcs
9599	Clipped Corner Pink; 20 x 72/pcs
9600	Clipped Corner Yellow; 20 x 72/pcs
9601	Clipped Corner Green; 20 x 72/pcs
9602	Clipped Corner Orange; 20 x 72/pcs
9603	Clipped Corner Purple; 20 x 72/pcs

Tissue-Tek® AutoWrite® Advanced Adhesive Slides

Tissue-Tek® AutoWrite® Advanced Adhesive Slides are developed for use in Immunohistochemistry (IHC) and other harsher applications. Even more adhesiveness compared to the Tissue-Tek AutoWrite Adhesive slides, these will eliminate the issue of tissues falling off.

The Tissue-Tek AutoWrite Advanced Adhesive Slides are available in white with ground edges 90° clipped corners. Slide dimensions are approximately 76 x 26 mm with a thickness of 1.0 mm. The slides are supplied in volumes of 1440; 20 packs of 72 slides each.

Item code AutoWrite® Advanced Adhesive

9618	Clipped Corner White; 20 x 72/pcs
------	-----------------------------------

Tissue-Tek® SmartWrite® Slides

The Tissue-Tek® SmartWrite® Slides come with a frosted area with unique characteristics. The new frosted areas are optimised for use on the thermal transfer printers as well as use on Ink-Jet printers.

The Tissue-Tek SmartWrite Slides are 26 x 76 mm in size with approximately 1,0 mm in thickness. The slides are made from soda-lime glass. The frosted area will be approximately 20 mm wide and the bottom corners will have special print to level the slides. This will reduce the chance of scratching on the glass and slides sticking to each other. It will come in white with ground edge 90° with clipped corners. This slide configuration reduces unwanted slide damage and frequency of slides getting jammed in the printer.

The Tissue-Tek SmartWrite Slides are available in both non-adhesive and adhesive slides. The non-adhesive slides are supplied in volumes of 2500; 50 packs of 50. The adhesive slides are supplied in volumes of 1440; 20 packs of 72.

Item code Tissue-Tek® SmartWrite® Advanced

9585	Non-Adhesive Ground Edges 90° Clipped Corner White; 50 x 50/pcs
9721	Adhesive Ground Edges 90° Clipped Corner White; 20 x 72/pcs

Tissue-Tek® Glas™ Coverslips

Tissue-Tek® Glas™ Coverslips are ideal for the covering of preparations in microscopic assays in histopathology, medicine, biology and research. These coverslips are borosilicate glass with hydrolytic class of 1. The coverslips can be used in with the Tissue-Tek® Glas™ g2 Coverslipper.

The thickness is roughly 0,13 – 0,17 mm and is packed in 100 piece boxes and are manufactured according to the international standard ISO 8225/1. The coverslips are available in 4 different lengths: 24x 40mm, 24 x 50 mm, 24 x 55mm and 24 x 60 mm. The coverslips are supplied in volumes of 1000; 10 packs of 100 coverslips.

Item code Description

9579	Tissue-Tek® Glas™ Coverslips 24 x 55 mm, 10 x 100/pcs
9580	Tissue-Tek® Glas™ Coverslips 24 x 40 mm, 10 x 100/pcs
9581	Tissue-Tek® Glas™ Coverslips 24 x 50 mm, 10 x 100/pcs
9582	Tissue-Tek® Glas™ Coverslips 24 x 60 mm, 10 x 100/pcs

Tissue-Tek® Super Mega Slides & Coverslips

The Tissue-Tek® Super Mega Slides are made for larger tissue sections that are too large for normal slides. By creating large slides, uninterrupted examination is possible. Special inserts for the slide baskets are available for the Tissue-Tek Super Mega slides which enable staining on the automated slide stainers. The slides are supplied in volumes of 50; 1 pack of 50 slides.

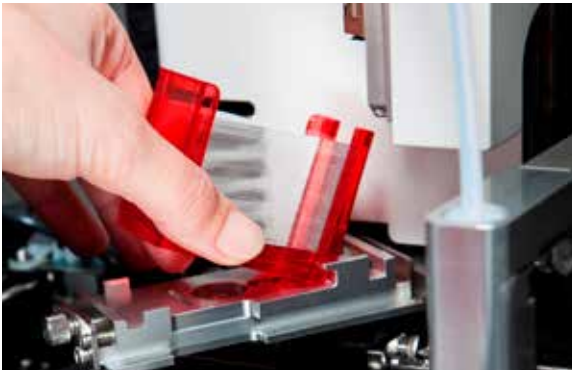
The Tissue-Tek® Super Mega Coverslips are coverslips made specifically for use with the Tissue-Tek Super Mega slides.

The coverslips are borosilicate glass with hydrolytic class of 1. The coverslips are supplied in volumes of 100; 1 pack of 100 coverslips.

Item code Description

9641	Tissue-Tek® Super Mega Slide Cut Edges 76 x 52 mm; 100/pcs
9642	Tissue-Tek® Super Mega Slide Coverslips 60 x 50 mm; 100/pcs
9643	Tissue-Tek® Super Mega Slide Coverslips 76 x 52 mm; 100/pcs





Tissue-Tek® Glas™ g2 Coverslips & Easy Holder

The quick way of refilling coverslips in the Tissue-Tek® Glas™ g2, with the convenient prefilled Easy Holder.

Item code	Description
6415	Tissue-Tek® Glas™ g2 Coverslips & Easy Holder 24 x 40 mm, 5 x 200/cs
6416	Tissue-Tek® Glas™ g2 Coverslips & Easy Holder 24 x 50 mm, 5 x 200/cs
6417	Tissue-Tek® Glas™ g2 Coverslips & Easy Holder 24 x 60 mm, 5 x 200/cs



Tissue-Tek® Cold Plate

The Tissue-Tek® Cold Plate provides an easy way to cool blocks before sectioning. Just cool the plates in an ordinary freezer and take them out when there is a need for cooling blocks. The plates will stay cold for a long period, due to insulated bases.

Item code	Description
4650	Cold Plate (1 base and 6 plates) 25x10x3 cm, set 3 kg



Accu-Edge® Disposable Microtome Blades

Accu-Edge® Disposable Microtome Blades are the worldwide standard for disposable microtome blades. They are manufactured by Feather in Japan. Sakura offers a wide range of nine different Accu-Edge Disposable Microtome Blades, including the well-known S35 and R35 blades, for sectioning different specimens. The ultra-sharp blades section specimens without striations, distortion or chattering.

The Accu-Edge Paraform® Microtome Blade is specially designed for the sectioning of Tissue-Tek Paraform® Cassettes to guarantee the best results.

Item code	Description
4685	Accu-Edge® High-Profile for large specimens
4980	Accu-Edge® Low-Profile extremely thin sectioning
4810	Accu-Edge® Low-Profile Cryo sectioning
4690	Accu-Edge® Low-Profile for hard tissues
4691	Accu-Edge® Low-Profile for extra hard tissues
4686	Accu-Edge® Low-Profile for ribbon sectioning
4688	Accu-Edge® Low-Profile for extremely thin sectioning
4689	Accu-Edge® Low-Profile for routine sectioning
7089	Accu-Edge® Paraform® Disposable Microtome Blade



6. Staining & Coverslipping

Automated Slide Stainer & Coverslipper

Tissue-Tek Prisma® Plus & Tissue-Tek Film®

Tissue-Tek Prisma® Plus & Tissue-Tek® Glas™ g2

Tissue-Tek® DRS™ 2000 Multiple Slide Stainer

Tissue-Tek® Manual Slide Staining Kit

Tissue-Tek® Coverslipping Film

Tissue-Tek® Mounting Media

Tissue-Tek® Glas™ g2 Coverslips & Easy Holder

Tissue-Tek® SF Glas™ Coverslips

Tissue-Tek Prisma® Plus & Film®

Automated Slide Stainer & Coverslipper



SMART Automation
Powered by Sakura

Specifications

Capacity	660 slides
Dimensions	
W x D x H	197 x 71 x 69 cm
Weight	225 kg
Capacity	
Loading	Up to 60 slides
Unloading	Up to 240 slides

Specifications

Prisma® Plus Slide stainer

Capacity	660 slides
Dimensions	
W x D x H	125 x 71 x 63 cm
Weight	150 kg
Number of reservoirs	
Start	1 to 3 stations
Reagent	31 to 51 reservoirs
Drying	0 to 2 stations
Wash	0 to 4 stations (8 programmable steps)
Heating (optional)	2 stations
Capacity	
Reagent volume	160, 260 and 680 mL
Staining protocols	11 runs continuously loading, and simultaneously running
Baskets	10- or 20-slide basket
Loading	Up to 60 slides per run
Temperature	
Drying station	30 ~ 65°C
Heating station	30 ~ 70°C

Specifications

Tissue-Tek Film® Coverslipper

Capacity	1080 slides
Dimensions	
W x D x H	72 x 58 x 69 cm
Weight	75 kg
Capacity	
Loading	Up to 60 slides
Unloading	Up to 240 slides
Track & Trace	Slide Barcode Reading

Tissue-Tek Prisma® Plus & Tissue-Tek Film®

The Tissue-Tek Prisma® Plus & Tissue-Tek Film® integrated system is the gold standard in staining and film coverslipping. This reliable and flexible workhorse is the ultimate timesaver for your laboratory.

This guarantees true walk away capability and continuous confidence in performance and quality due to its unsurpassed system up-time.

The flexibility of standard and special staining in a single system, with the use of proven film coverslipping technology makes this a cost efficient method.

Ultimate time saving

Virtually every histopathology lab is pushed on turnaround times and faces increasing workload, often with reduced staff and with equal or less financial resources. The integrated Prisma Plus and Film is the ultimate time saver, freeing your staff for other important tasks.

Supreme flexibility

Customers have greatly appreciated the convenience delivered by the integrated Prisma Film stainer coverslipper. This is due to the flexibility of having a single platform to easily perform a H&E and special stains reducing hands on time, maintenance time and service costs.

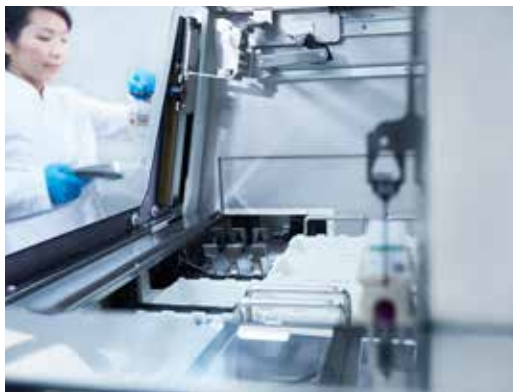
Superior reliability

The Prisma Plus and Film coverslipper have been designed, engineered and built to provide the laboratory with an integrated stainer coverslipper having a pedigree of dependability and reliability. This ensures a smooth workflow through continuous loading and high quality staining slide after slide.

Tissue-Tek Prisma Plus & Tissue-Tek Film offer you:

- Ultimate time saving
- Supreme flexibility
- Superior reliability





Tissue-Tek® iSupport™ Powered by Sakura

Item code Description

8022	License Tissue-Tek® iSupport™
8023	License Tissue-Tek® iSupport™ (extra user)

Item code Description

6172	Tissue-Tek Prisma® Plus Standard Configuration; 230 V, 50/60 Hz
6173	Tissue-Tek Prisma® Plus Special Staining Configuration; 230 V, 50/60 Hz
4768	Tissue-Tek® 20-Slide Basket
6135	Tissue-Tek Prisma® 20-Slide Basket Load/Unload Adapter
6136	Tissue-Tek Prisma® 20-Slide Basket Adapter
6137	Tissue-Tek Prisma® 10-Slide Basket
6138	Tissue-Tek Prisma® 10-Slide Basket Adapter
6139	Tissue-Tek Prisma® 10-Slide Basket Load/Unload Station Adapter
6140	Tissue-Tek Prisma® Special Stain Solution Reservoir (160 mL)
6141	Tissue-Tek Prisma® Heated Solution Reservoir
6144	Tissue-Tek Prisma® Lid for Special Stain Solution Reservoir
6145	Tissue-Tek Prisma® Small Solution Reservoir (260 mL)
6146	Tissue-Tek Prisma® Lid for Small Solution Reservoir
6147	Tissue-Tek Prisma® Standard Solution Reservoir (680 mL)
6148	Tissue-Tek Prisma® Standard Solution Reservoir with Handle (680 mL)
6149	Tissue-Tek Prisma® Wash Reservoir
6151	Tissue-Tek Prisma® Lid for Standard Solution Reservoir
6152	Tissue-Tek Prisma® 3-Position Reservoir Tray
6153	Tissue-Tek Prisma® Large Lid for 3-Position Reservoir Tray
6154	Tissue-Tek Prisma® 4-Position Reservoir Tray
6155	Tissue-Tek Prisma® Large Lid for 4-Position Reservoir Tray
6156	Tissue-Tek Prisma® Special Stain Reservoir Tray
6157	Tissue-Tek Prisma® Standard Solution Reservoir Set
6158	Tissue-Tek Prisma® Small Solution Reservoir Set
6159	Tissue-Tek Prisma® Special Stain Solution Reservoir Set





Item code Description

6160	Tissue-Tek Prisma® Activated Carbon Filter; 2/pcs
6162	Tissue-Tek Prisma® Basket Adapter Label
6163	Tissue-Tek Prisma® Control Panel Protection Sheet
6164	Tissue-Tek Prisma® Compact Flash Card (512 Mb)
6165	Tissue-Tek Prisma® Duct Connection Adapter (38 mm)
6166	Tissue-Tek Prisma® Duct Connection Adapter (75 mm)
HIS40614	Tissue-Tek® Insert for slide basket (for 5 large slides maximum 60 mm wide)

SA-6172-UT	User Training Tissue-Tek Prisma® Plus Standard
SA-6173-UT	User Training Tissue-Tek Prisma® Plus Special
SC-6172-G	Service Agreement Tissue-Tek Prisma® Plus Standard Gold
SC-6172-P	Service Agreement Tissue-Tek Prisma® Plus Standard Platinum
SC-6172-S	Service Agreement Tissue-Tek Prisma® Plus Standard Silver
SC-6173-G	Service Agreement Tissue-Tek Prisma® Plus Special Gold
SC-6173-P	Service Agreement Tissue-Tek Prisma® Plus Special Platinum
SC-6173-S	Service Agreement Tissue-Tek Prisma® Plus Special Silver

Item code Description

4742	Tissue-Tek Film® Coverslipper 230 V, 50/60 Hz
6508	Tissue-Tek® Barcode system for Coverslippers
6134	Tissue-Tek Prisma® Link System Kit for Tissue-Tek Film® Coverslipper
4770	Tissue-Tek® Coverslipping Film 70 m
4772	Tissue-Tek® Coverslipping Film Cutter Blades; 5/cs
6160	Tissue-Tek Prisma® Activated Carbon Filter; 2/cs
4745	Tissue-Tek® Xylene Bottle (500 mL)
4746	Tissue-Tek® Cap for Xylene Bottle
4748	Tissue-Tek® Waste Bottle (200 mL)
4749	Tissue-Tek® Cap for Waste Bottle
6506	Tissue-Tek® Exhaust hose assembly 38 mm Ø
6507	Tissue-Tek® Exhaust hose assembly 75 mm Ø

SA-4742-UT	User Training Tissue-Tek Film® Coverslipper
SC-4742-G	Service Agreements Tissue-Tek Film® Coverslipper Gold
SC-4742-P	Service Agreements Tissue-Tek Film® Coverslipper Platinum
SC-4742-S	Service Agreements Tissue-Tek Film® Coverslipper Silver

Tissue-Tek Prisma® Plus & Tissue-Tek® Glas™ g2

Automated Slide Stainer & Coverslipper



SMART Automation
Powered by Sakura

Specifications

Throughput	360 slides per hour
Dimensions	
W x D x H	200 x 71 x 75 cm
Weight	260 kg
Capacity	
Loading	Up to 60 slides
Unloading	Up to 240 slides

Specifications Prisma® Plus Slide stainer

Capacity	660 slides
Dimensions	
W x D x H	125 x 71 x 63 cm
Weight	150 kg
Number of reservoirs	
Start	1 to 3 stations
Reagent	31 to 51 reservoirs
Drying	0 to 2 stations
Wash	0 to 4 stations (8 programmable steps)
Heating (optional)	2 stations
Capacity	
Reagent volume	160, 260 and 680 mL
Staining protocols	11 runs continuously loading, and simultaneously running
Baskets	10- or 20-slide basket
Loading	Up to 60 slides per run
Temperature	
Drying station	30 ~ 65°C
Heating station	30 ~ 70°C

Specifications Tissue-Tek® Glas™ g2 Coverslipper

Throughput	360 slides per hour
Dimensions	
W x D x H	75 x 62 x 75 cm
Weight	110 kg
Capacity	
Loading	Up to 60 slides
Unloading	Up to 240 slides

Tissue-Tek Prisma® Plus & Tissue-Tek® Glas™ g2

Tissue-Tek Prisma® Plus & Tissue-Tek® Glas™ g2 provides high reliability, user convenience and flexibility in staining and glass coverslipping. One system for routine and special staining, with Integrated Track & Trace with barcode reading.

Optimised consistent high quality

Prisma Plus & Tissue-Tek Glas g2 enables optimised and consistent high quality routine and special staining. Slide-to-slide consistency results in crisp images with clear morphological and nuclear detail. Quality is further enhanced with optimised protocols and specialised Sakura application support. Integrated track & trace capability through slide barcode reading enhances laboratory quality assurance. Determine the status of slides real-time and stay in control.

Increased efficiency and reliability

Prisma & Glas g2 provides unmatched staining and glass coverslipping turn around time improvement with 360 slides per hour. The system enables an efficient workflow with continuous loading and unloading capabilities. The Tissue-Tek Prisma Plus is the most flexible multiple stainer on the market, with a wide range of configurations for routine and special staining. The availability of three different volume reagent reservoirs optimises reagent usage and decreases operating costs. Mechatronics™ mechanism prevents any damage to the cover glass or tissue and guarantees bubble free slides.

Enhance user convenience with Tissue-Tek® Glas™ g2 Coverslips & Easy Holders. These pre-filled coverslip holders enable quick and easy refilling of glass coverslips.

Tissue-Tek Prisma & Glas g2 offer you:

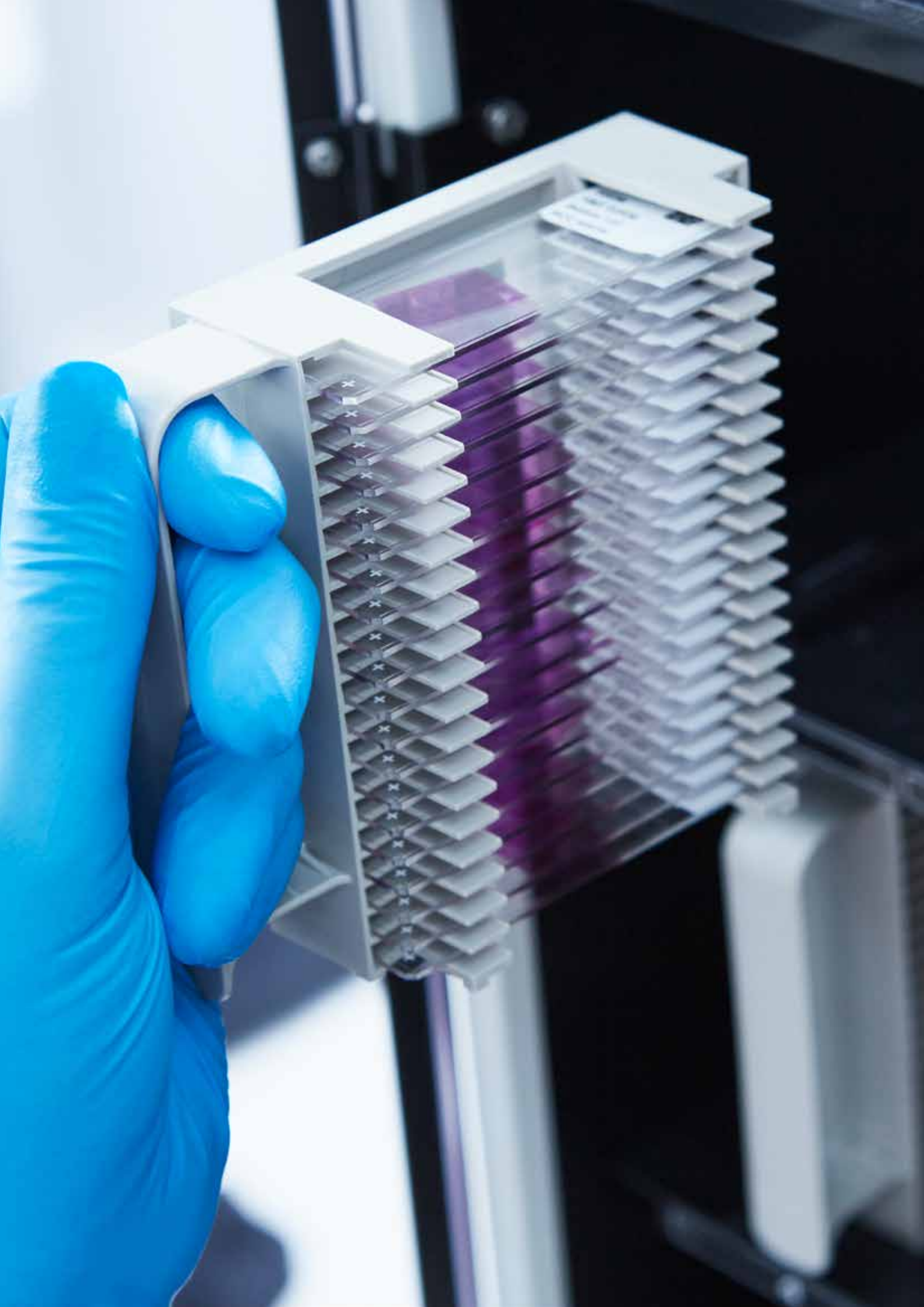
- Improved quality, efficiency and user friendliness
- Rapid glass coverslipping with 360 slides per hour
- One system for routine and special staining
- Integrated Track & Trace and slide identification with barcode reading
- An air bubble free result through Mechatronics mechanism





Item code Description

6172	Tissue-Tek Prisma® Plus Standard Configuration; 230 V, 50/60 Hz
6173	Tissue-Tek Prisma® Plus Special Staining Configuration; 230 V, 50/60 Hz
4768	Tissue-Tek® 20-Slide Basket
6135	Tissue-Tek Prisma® 20-Slide Basket Load/Unload Adapter
6136	Tissue-Tek Prisma® 20-Slide Basket Adapter
6137	Tissue-Tek Prisma® 10-Slide Basket
6138	Tissue-Tek Prisma® 10-Slide Basket Adapter
6139	Tissue-Tek Prisma® 10-Slide Basket Load/Unload Station Adapter
6140	Tissue-Tek Prisma® Special Stain Solution Reservoir (160 mL)
6141	Tissue-Tek Prisma® Heated Solution Reservoir
6144	Tissue-Tek Prisma® Lid for Special Stain Solution Reservoir
6145	Tissue-Tek Prisma® Small Solution Reservoir (260 mL)
6146	Tissue-Tek Prisma® Lid for Small Solution Reservoir
6147	Tissue-Tek Prisma® Standard Solution Reservoir (680 mL)
6148	Tissue-Tek Prisma® Standard Solution Reservoir with Handle (680 mL)
6149	Tissue-Tek Prisma® Wash Reservoir
6151	Tissue-Tek Prisma® Lid for Standard Solution Reservoir
6152	Tissue-Tek Prisma® 3-Position Reservoir Tray
6153	Tissue-Tek Prisma® Large Lid for 3-Position Reservoir Tray
6154	Tissue-Tek Prisma® 4-Position Reservoir Tray
6155	Tissue-Tek Prisma® Large Lid for 4-Position Reservoir Tray
6156	Tissue-Tek Prisma® Special Stain Reservoir Tray
6157	Tissue-Tek Prisma® Standard Solution Reservoir Set
6158	Small Solution Reservoir Set
6159	Special Stain Solution Reservoir Set
6160	Tissue-Tek Prisma® Activated Carbon Filter; 2/cs
6162	Tissue-Tek Prisma® Basket Adapter Label
6163	Tissue-Tek Prisma® Control Panel Protection Sheet
6164	Tissue-Tek Prisma® Compact Flash Card (512 Mb)
HIS40614	Tissue-Tek Prisma® Insert for slide basket (for 5 large slides maximum 60 mm wide)





Item code Description

SA-6172-UT	User Training Tissue-Tek Prisma® Plus Standard
SA-6173-UT	User Training Tissue-Tek Prisma® Plus Special
SC-6172-G	Service Agreement Tissue-Tek Prisma® Plus Standard Gold
SC-6172-P	Service Agreement Tissue-Tek Prisma® Plus Standard Platinum
SC-6172-S	Service Agreement Tissue-Tek Prisma® Plus Standard Silver
SC-6173-G	Service Agreement Tissue-Tek Prisma® Plus Special Gold
SC-6173-P	Service Agreement Tissue-Tek Prisma® Plus Special Platinum
SC-6173-S	Service Agreement Tissue-Tek Prisma® Plus Special Silver

Item code Description

6502	Tissue-Tek® Glas™ g2 Coverslipper 230V, 50/60Hz
6508	Tissue-Tek® Barcode System for Coverslippers
6168	Tissue-Tek Prisma® Link System Kit for Tissue-Tek® Glas™ g2 Coverslipper
6415	Tissue-Tek® Glas™ g2 Coverslips & Easy Holder 24x40 mm; 5 x 200/cs
6416	Tissue-Tek® Glas™ g2 Coverslips & Easy Holder 24x50 mm; 5 x 200/cs
6417	Tissue-Tek® Glas™ g2 Coverslips & Easy Holder 24x60 mm; 5 x 200/cs
6423	Tissue-Tek® Glas™ g2 Nozzle reservoir
6430	Tissue-Tek Prisma® Waste Container
6433	Tissue-Tek Prisma® bottle
6504	Tissue-Tek® Glas™ g2 Slide Rack
6505	Tissue-Tek® Glas™ g2 Waste bottle
6160	Tissue-Tek Prisma® Activated Carbon Filter; 2/cs
6506	Tissue-Tek® Exhaust hose assembly 38 mm Ø
6507	Tissue-Tek® Exhaust hose assembly 75 mm Ø

SA-4742/	User Training Tissue-Tek® Glas™ g2
6502-UT	Coverslipper
SC-6502-G	Service Agreements Tissue-Tek® Glas™ g2 Coverslipper Gold
SC-6502-P	Service Agreements Tissue-Tek® Glas™ g2 Coverslipper Platinum
SC-6502-S	Service Agreements Tissue-Tek® Glas™ g2 Coverslipper Silver

Tissue-Tek® iSupport™
Powered by Sakura

Item code Description

8022	License Tissue-Tek® iSupport™
8023	License Tissue-Tek® iSupport™ (extra user)

Tissue-Tek® DRS™ 2000

Random Access & Multiple Slide Stainer



Tissue-Tek® DRS™ 2000 Multiple Slide Stainer

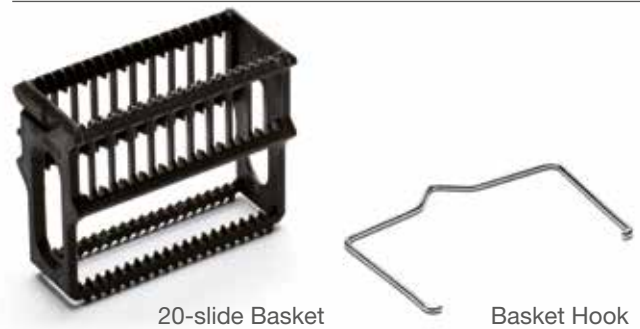
The Tissue-Tek® DRS™ 2000 Multiple Slide Stainer offers multiple staining protocols in a true random-access mode. Based on current workload demands, the system can handle up to 11 sets of 40 slides at a time. The operator selects from 20 methods stored in memory, presses START and walks away. It is a simple but intelligent instrument for unsurpassed productivity - slide after slide, shift after shift.

Specifications

Throughput	Up to 440 slides per hour
Dimensions	W x D x H 115 x 49 x 66 cm
Weight	90 kg
Number of reservoirs	
Start	1 to 3 stations
Reagent	27 reservoirs
Drying	1 station
Wash	0 to 4 stations
Capacity	
Reagent volume	650 mL
Staining protocols	11 runs continuously loading, and simultaneously running
Baskets	20 slide basket
Loading	Up to 40 slides per run
Temperature	
Drying station	30 ~ 65°C

Item code Description

4931	Tissue-Tek® DRS™ 2000 with Dryer 220 V, 50/60 Hz
2008	Tissue-Tek® DRS™ Carbon Filter; 2/cs
4768	Tissue-Tek® 20-Slide Basket
4974	Tissue-Tek® Solution Reservoir 650 mL
4975	Tissue-Tek® Wash Reservoir 650 mL
4976	Tissue-Tek® Reservoir Lid
4977	Tissue-Tek® Basket Hook; 10/cs
4978	Tissue-Tek® Basket Adapter
4979	Tissue-Tek® Wash Station Plug
4981	Tissue-Tek® Drain Hose
4985	Tissue-Tek® Wash Reservoir Grommet
4986	Tissue-Tek® Lid 6 Large Solution Reservoir
4993	Tissue-Tek® Lid 7 Large Solution Reservoir
HIS40614	Tissue-Tek® Insert for slide basket (for 5 large slides maximum 60 mm wide)
6506	Tissue-Tek® Exhaust hose assembly 38 mm Ø
6507	Tissue-Tek® Exhaust hose assembly 75 mm Ø
SA-4931-UT	User Training Tissue-Tek® DRS™ 2000
SC-4931-G	Service Agreements Tissue-Tek® DRS™ 2000 Gold
SC-4931-P	Service Agreements Tissue-Tek® DRS™ 2000 Platinum
SC-4931-S	Service Agreements Tissue-Tek® DRS™ 2000 Silver





Tissue-Tek® Manual Slide Staining Kit

The Tissue-Tek® Manual Slide Staining Set can be used for histological or cytological staining procedures. The set provides simultaneous use of up to 12 solution wells, each deep enough to permit total immersion of 2.5 to 7.6 cm slides. The tamped metal frame is solvent-resistant, with a snap- locking cover that prevents spills. Ten white poly-propylene dishes and two green solvent-resistant dishes are included. Tight-fitting lids for each solution dish help eliminate evaporation. Comes complete with 12 dishes and lids, a 12-unit metal carrier and a drain tray cover. Accessories for the Tissue-Tek® Manual Slide Staining Set include green and white staining dishes and a 24-Slide Holder with detachable handle.

Item code	Description
4451	Tissue-Tek® Manual Slide Staining Set
4456	Tissue-Tek® Staining Dish Green
4457	Tissue-Tek® Staining Dish White
4465	Tissue-Tek® 24-Slide Slide Holder with detachable handle



Tissue-Tek® Coverslipping Film

Tissue-Tek® Coverslipping Film is a unique, resin-coated plastic film that eliminates the need for cover glasses and liquid mounting media - which reduces coverslipper maintenance and enables fast coverslipping. The unique flexible film accepts any specimen. The optical characteristics are comparable to those of glass.

Item code	Description
4770	Tissue-Tek® Coverslipping Film 70 m; 5/pcs



Tissue-Tek® Glas™ Mounting Media

Sakura Finetek offers high and low viscosity, xylene-based mounting media for glass coverslipping. Furthermore, Tissue-Tek® Glas™ Tissue-Mount™, Tissue-Clear® based mounting medium, is available for xylene free glass coverslipping.

The Tissue-Tek® Glas™ Mounting Media packaging is designed for ease of use with the Tissue-Tek Glas g2 Coverslipper.

Item code	Description
1408N	Tissue-Tek® Glas™ Mounting Medium, 6 x 500 mL
1410	Tissue-Tek® Glas™ Pertex, 6 x 500 mL
1467N	Tissue-Tek® Glas™ Tissue-Mount™, 6 x 500mL

Tissue-Tek® Barcode Reader for Coverslippers

4743K	Tissue-Tek Film® Coverslipper Barcode System Retrofit
6503K	Tissue-Tek® Glas™ g2 Barcode System Retrofit
F60-308-00	Tissue-Tek Film® Barcode System Retrofit Kit (excl.6508)
F60-309-00	Tissue-Tek® Glas™ g2 Barcode System Retrofit Kit (excl 6508)



Tissue-Tek® Glas™ g2 Coverslips & Easy Holder

The quick way of refilling coverslips in the Tissue-Tek® Glas™ g2, with the convenient prefilled Easy Holder.

Item code	Description
6415	Tissue-Tek® Glas™ g2 Coverslips & Easy Holder 24 x 40 mm; 5 x 200/cs
6416	Tissue-Tek® Glas™ g2 Coverslips & Easy Holder 24 x 50 mm; 5 x 200/cs
6417	Tissue-Tek® Glas™ g2 Coverslips & Easy Holder 24 x 60 mm; 5 x 200/cs

Tissue-Tek® Glas™ Coverslips

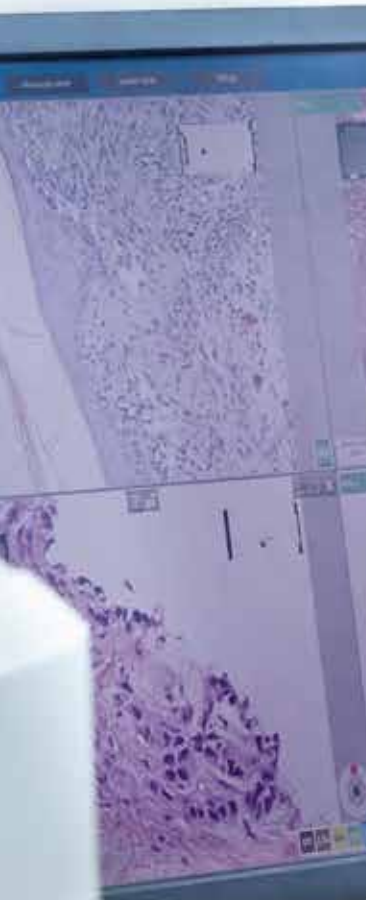
Tissue-Tek® Glas™ Coverslips are ideal for the covering of preparations in microscopic assays in histopathology, medicine, biology and research. These coverslips are borosilicate glass with hydrolytic class of 1. The coverslips can be used in with the Tissue-Tek® Glas™ g2 Coverslipper.

The thickness is roughly 0,13 – 0,17 mm and is packed in 100 piece boxes and are manufactured according to the international standard ISO 8225/1. The coverslips are available in 4 different lengths: 24x 40 mm, 24 x 50 mm, 24 x 55 mm and 24 x 60 mm. The coverslips are supplied in volumes of 1000; 10 packs of 100 coverslips.

Item code	Description
9579	Tissue-Tek® Glas™ Coverslips 24 x 55 mm, 10 x 100/pcs
9580	Tissue-Tek® Glas™ Coverslips 24 x 40 mm, 10 x 100/pcs
9581	Tissue-Tek® Glas™ Coverslips 24 x 50 mm, 10 x 100/pcs
9582	Tissue-Tek® Glas™ Coverslips 24 x 60 mm, 10 x 100/pcs

7. Imaging

VisionTek® Live Digital Microscope



VisionTek®

Live Digital Microscope



Imaging

VisionTek® Live Digital Microscope

Bringing live routine microscopy to the new digital world, Sakura Finetek proudly introduces: VisionTek® live digital microscope.

This high-end motorised, digital microscope captures real-time images, for live viewing and precise measurements, all within seconds. The live multi-view mode is perfect for complex cases, displaying multiple slides and stains on one screen. Live sharing of images has never been easier; the large, high-definition screen displays extensive details, which can be viewed alone or together.

The snapshot option is a powerful tool for creating instant, high resolution pictures of single slide or multi-views, which can be used directly in presentations.

The VisionTek is a live digital microscope including scanner capabilities, for scanning whole and partial slides.

The pathologist now has complete control of the entire recording process.

VisionTek optimises live routine microscopy:

- Facilitates easy and accurate diagnoses
- Share live images
- Direct consulting
- User determines what and when to archive

Specifications

Microscope Frame

Illuminator	Bright field Koehler LED Illumination
Objective lenses	Carl Zeiss EC Plan-Neofluar 2.5x/0.075
	Carl Zeiss EC Plan-Neofluar 10x/0.3
	Carl Zeiss EC Plan-Neofluar 20x/0.5
Motorised stage	Motorised XY stage with automatic control
	Automated lens changer
Focusing	Motorised automatic and manually focus

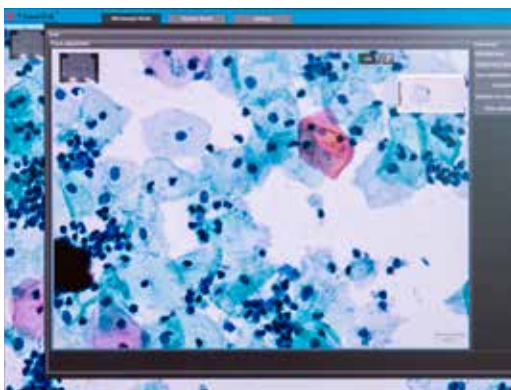
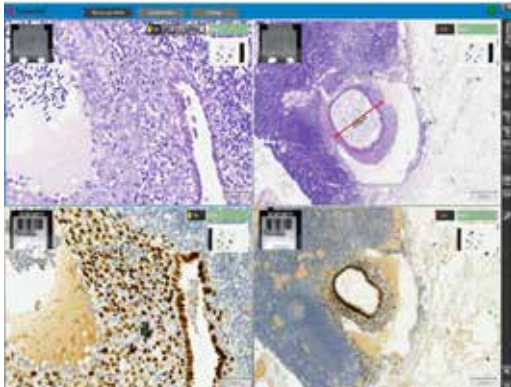
Digital camera

CCD camera	4.1M pixel (2336 x 1752 px; Px size 5,5 µm); high sensitivity and high resolution camera
Live image display	16 frames/sec

Item code Description

9002	VisionTek® Live Digital Microscope including: <ul style="list-style-type: none"> • Windows 7 x 64bit PC • 24 inch High Resolution monitor (WUXGA) • 2 VisionTek® Slide Carriers • QWERTY Keyboard and Mouse
9011	VisionTek® Slide Carrier, 4 slides each
SA-9002-UT	User Training VisionTek®
SC-9002-G	Service Agreements VisionTek® Gold
SC-9002-P	Service Agreements VisionTek® Platinum
SC-9002-S	Service Agreements VisionTek® Silver





VisionTek DIAGNOSIS

For precise and expert diagnosis a detailed, crystal sharp image is essential. Through the high quality objectives and cameras, a superb live image is created and presented on the widescreen monitor.

With live images diagnostic tools like real-time annotations, such as distances and area measurements, can be used, without the need to save the image first. In addition to a detailed single live image, there is the possibility to show a multi-view of several live images, together in one screen. This unique feature provides the possibility of presenting different stains, of the same tissue, in one overview. As a result of this direct comparison, live diagnosis of complex cases is simplified and the time to diagnosis is dramatically reduced.

VisionTek SHARE

Images can be viewed by multiple participants on the same high resolution, making face-to-face education direct and more personal than using a multihead microscope. High resolution snapshots of single or multi-view screens are made, just by the click of your mouse.

VisionTek CONSULT

Some difficult and complex cases need an expert or second opinion. When this colleague is within the premises, consulting is easy: the high definition screen makes discussing and diagnosing cases together extremely easy. In many cases the expert colleague will not be in the same department. With the VisionTek live images can be shared with remote colleagues anywhere: on another floor, building, city or even continent.

VisionTek ARCHIVE

With the VisionTek the pathologist is in full control of the archiving and storing process. The user decides if there is a need to archive and if so, which slide or specific area of this slide is important to digitally archive. With the VisionTek the pathologist decides exactly why and what to scan, therefore the recorded images stay small, always in focus and manageable. There are several options that can be used to record the desired area of interest: screenshots, high resolution snapshots, mini-, whole- or partial- and even z-stacked scanned images.

You decide what, when and how to archive.





8. Cryotomy

Tissue-Tek Cryo₃® Flex Microtome/Cryostat

Tissue-Tek® O.C.T.™ Compound

Tissue-Tek® Cryo₃® Flex Microtome/Cryostat



Specifications

Dimensions

W x D x H 65 x 75 x 119

Weight 173 kg

Chamber Temperature Range -35°C to 0°C

Cryobar® Temperature approx 10°C colder than the Chamber temperature

Sectioning speed range

Maximum: sections per minute

Minimum: 2 sections per minute

Specimen Size Round 25, 38 and 55 mm

Specimen Orientation 8° (x and y axis),
360° (z axis)

Sectioning Range 1 to 99 µ in 1 µ increments

Travel Range

Vertical 63 mm

Horizontal 31.75 mm

Item code Description

6203 Tissue-Tek® Cryo₃® Flex Cryostat, Basic

6204 Tissue-Tek® Cryo₃® Flex Cryostat, Disinfection

6205 Tissue-Tek® Cryo₃® Flex Cryostat, D. Motorised

6211 Tissue-Tek® Cryo₃® Flex Anti-Roll Rake Assembly

6210 Tissue-Tek® Cryo₃® Flex Anti-Roll Plate Assembly

6213 + 6214 Tissue-Tek® Cryo₃® Flex Utility Trays

Tissue-Tek® Cryo₃® Flex Microtome/ Cryostat

The Tissue-Tek® Cryo₃® Flex is the 3rd generation of the trusted Cryo₃ platform for fast sectioning of frozen tissue specimens. This cryostat is equipped with new, innovative features designed to get complete sections faster and to preserve valuable tissue.

Of the new features, the most important is the fine angle adjustment of the 3D Precision Chuck on all 3 axes. It uniquely ensures accurate alignment of the block face to the blade, reduces users' trimming time and preserves patients' specimens. Furthermore, the sturdy chuck retains its position when locked and unlocked, eliminating any time and effort spent realigning the cutting angle.

The Tissue-Tek Cryo₃ Flex is available in three configurations, to meet every laboratories needs and budget demands. No matter which model you choose, you will benefit from time-tested methods, operator simplicity, minimal maintenance and of course renowned Sakura Tissue-Tek reliability.

Contact your local distributor for availability.

Tissue-Tek® iSupport™ Powered by Sakura

Item code Description

8022 License Tissue-Tek® iSupport™

8023 License Tissue-Tek® iSupport™ (extra user)



Tissue-Tek® O.C.T.™ Compound

Tissue-Tek® O.C.T.™ Compound is a formulation of water-soluble glycols and resins, providing a convenient specimen matrix for cryostat sectioning at temperatures of -10°C and below. No residue is left on slides during the staining procedure, eliminating undesirable background staining.

Item code Description

4583	Tissue-Tek® O.C.T.™ Compound, 12 x 125 mL
------	---

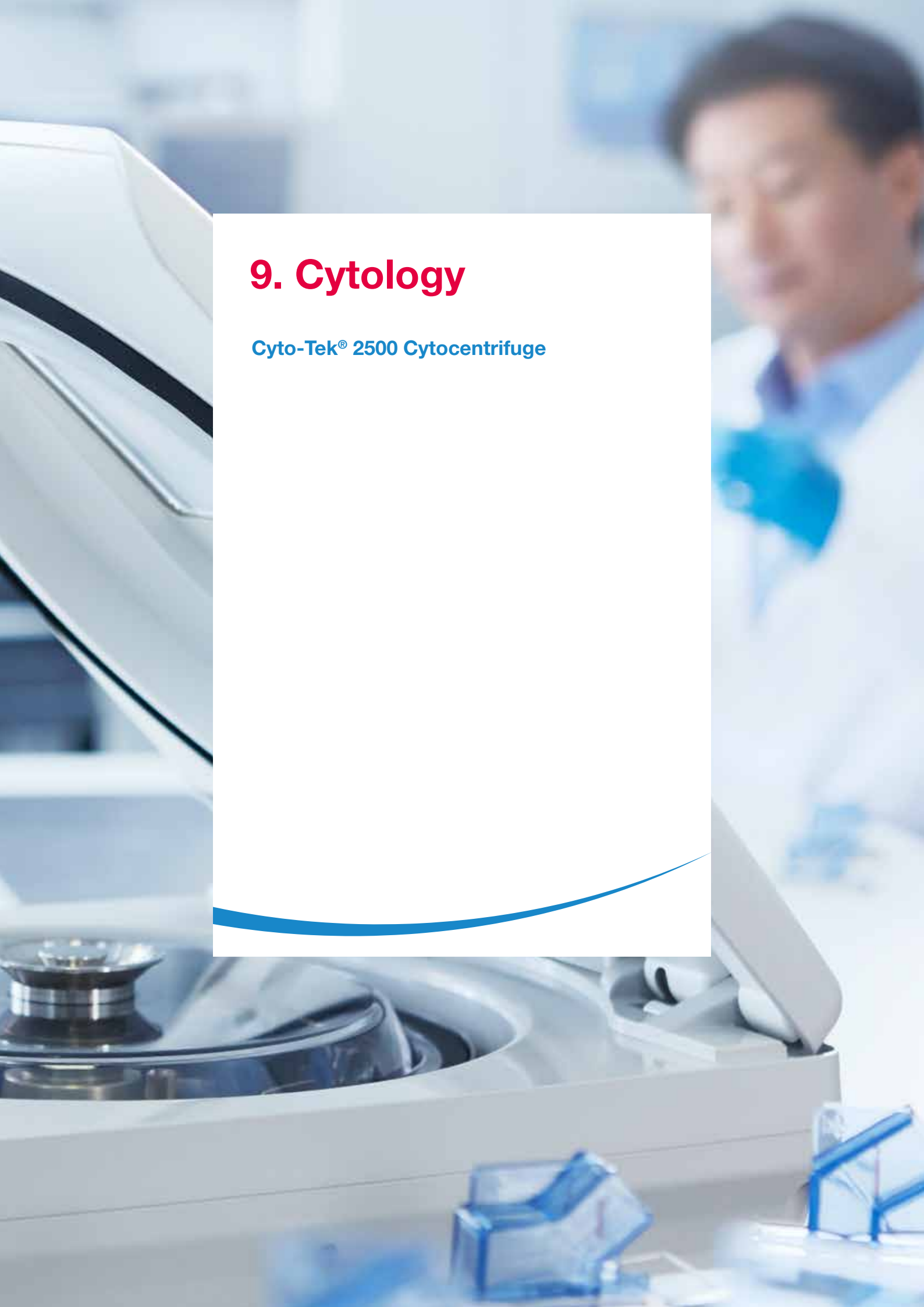
Consumables and accessories CRYO₃® Plus

5807	Tissue-Tek® Cryo ₃ ® Specimen Holders Small (25 mm), 6/cs
5808	Tissue-Tek® Cryo ₃ ® Specimen Holders Medium (38 mm), 6/cs
5809	Tissue-Tek® Cryo ₃ ® Specimen Holders Large (55 mm), 6/cs
5811	Tissue-Tek® Cryo ₃ ® Heat Extractor (Standard)
5815	Tissue-Tek® Cryo ₃ ® Heat Extractor (Large)
5819	Tissue-Tek® Cryo ₃ ® 4-Cavity Cryobar Insert
5820	Tissue-Tek® Cryo ₃ ® 4-Post Cryobar Insert
5824	Tissue-Tek® Cryo ₃ ® Utility Tray
5825	Tissue-Tek® Cryo ₃ ® Waste Bottle
5826	Tissue-Tek® Cryo ₃ ® Vacuum Filter Set
5827	Tissue-Tek® Cryo ₃ ® Vacuum Hose Attachment
5828	Tissue-Tek® Cryo ₃ ® Ozone Lamp
5829	Tissue-Tek® Cryo ₃ ® Foot Pedal
5831	Tissue-Tek® Cryo ₃ ® Anti-Roll Rake
5833	Tissue-Tek® Cryo ₃ ® Steel Knife Holder
5834	Tissue-Tek® Cryo ₃ ® Drain Cleaning Brush
5835	Tissue-Tek® Cryo ₃ ® Ozone Port Screen
5836	Tissue-Tek® Cryo ₃ ® Fluorescent Lamp Assembly
5837	Tissue-Tek® Cryo ₃ ® Drain Cover
5839	Tissue-Tek® Cryo ₃ ® Anti-Roll Plate
5840	Tissue-Tek® Cryo ₃ ® Beveled Glass Slides, 2pcs
4728	Round Cryomold® Standard, 100/cs
4730	Round Cryomold® Biopsy, 100/cs
4557	Cryomold® Standard 25 x 20 x 5 mm, 100/cs
4565	Cryomold® Biopsy 10 x 10 x 5 mm, 100/cs
4566	Cryomold® Intermediate 15 x 15 x 5 mm, 100/cs



9. Cytology

Cyto-Tek® 2500 Cytocentrifuge



Cyto-Tek® 2500 Cytocentrifuge



Cyto-Tek® 2500 Cytocentrifuge

The Cyto-Tek® 2500 Cytocentrifuge provides optimal cell recovery and advanced preservation of cellular structure in non-gynecological monolayer slide preparation. The 2500 was designed with enhanced features focusing on user safety, including the introduction of a new sealable rotor housing with lid which significantly reduces aerosol exposure. The housing is completely removable and transportable, providing added convenience. Technicians now have the ability to load and unload specimens in vented areas away from the centrifuge, under a fume hood. The Cyto-Tek 2500 Cytocentrifuge has a sleek and modern design and provides the superior clinical performance users have come to expect from Sakura's Cyto-Tek Cytocentrifuges.

Contact your local distributor for availability.

Specifications

Dimensions

H x W x D:	225 x 375 x 490 mm
Height with lid open	595 mm
Weight	11.7 kg
Process capacity	Up to 12 disposable chambers per process
Speed	Adjustable from 200 to 2.500 rpm (10 rpm increments)
Programmable times	1 second to 99 minutes 59 seconds (adjustable in 1-minute increments)
Chamber sizes	1-, 6-, and 12-mL disposable chambers
Number of programs	30 programs

Item code Description

4300	Cyto-Tek® 2500; 100-240 V, 50/60 Hz
4301	Cyto-Tek® Chamber Kit 1 mL; 50/pcs
4326	Cyto-Tek® 6 / 12 mL Base Holder; 12/pcs
4327	Cyto-Tek® 6 mL Gasket; 25/pcs
4328	Cyto-Tek® 12 mL Fluid Chamber; 12/pcs
4329	Cyto-Tek® 1 mL Fluid Chamber; 200/pcs
4331	Cyto-Tek® 6 mL Fluid Chamber; 12/pcs
4333	Cyto-Tek® 1 mL Filter Paper; 200/pcs
4334	Cyto-Tek® 6 / 12 mL Chamber Cap; 25/pcs
4335	Cyto-Tek® 1 mL Chamber Cap; 200/pcs
4336	Cyto-Tek® 1 mL Base Holder; 200/pcs
4337	Cyto-Tek® 12 mL Gasket; 25/pcs
4338	Cyto-Tek® 6 mL Filter Paper; 500/pcs
4339	Cyto-Tek® 12 mL Filter Paper; 100/pcs

10. Archiving

Tissue-Tek® Lab Aid® Ultra™ Cabinets

Tissue-Tek® Uni-Cassette® Filing Cabinets

Tissue-Tek® Lab Aid® Filing Cabinet System





Tissue-Tek® Lab Aid® Ultra™ II Cabinets

The Tissue-Tek® Lab Aid® Ultra™ II is a large capacity storage unit for storing slides and blocks equipped with locking feature for security. The maximum storage capacity is approximately 96.000 slides or 22.000 blocks, or anything in between if both the slides and blocks are stored in the same cabinet. The dimension of the cabinet is: W x D x H 595 x 713 x 1100 mm.

Item code	Description
3990	Tissue-Tek® Lab Aid® Ultra™ II Cabinet
3981	Tissue-Tek® Lab Aid® Ultra™ II Tray; 32/pcs
3982	Tissue-Tek® Lab Aid® Ultra™ II Tray with lid (4 row); 20/pcs
3983	Tissue-Tek® Lab Aid® Ultra™ II Drawer Identification Strip; 100/pcs
3980	Tissue-Tek® Lab Aid® Ultra™ II Trolley
3984	Tissue-Tek® Lab Aid® Ultra™ Coding Strips Red; 100/pcs
3985	Tissue-Tek® Lab Aid® Ultra™ Coding Strips Green; 100/pcs
3986	Tissue-Tek® Lab Aid® Ultra™ Coding Strips Yellow; 100/pcs
3987	Tissue-Tek® Lab Aid® Ultra™ Coding Strips Blue; 100/pcs
3988	Tissue-Tek® Lab Aid® Ultra™ Coding Strips Brown; 100/pcs
3999	Lock Key



Tissue-Tek® Uni-Cassette® Filing Cabinets

The Tissue-Tek Uni-Cassette® Filing Cabinet provides a permanent storage and reference unit for blocks embedded in Tissue-Tek® Embedding Rings and Cassettes. The Filing Cabinets are stackable and accommodate 1.000 rings or 1.500 cassettes. One-piece construction eliminates hinges and doors and provides dust-free storage. Includes six impact-resistant plastic drawers with identification area.

Item code	Description
4192	Uni-Cassette® Filing Cabinet



Tissue-Tek® Lab Aid® Filing Cabinet System

The Tissue-Tek® Lab Aid® Filing Cabinet System allows convenient storage and retrieval of microscopic slides or transparencies. The 25 mm drawer section is designed to hold 26 x 76 mm microscopic slides. Each section contains 14 drawers, with a capacity of 465 slides per drawer. The 50 mm drawer section is designed to hold 50 x 50 mm transparencies or 76 x 50 mm microscopic slides. The drawer section is complete with 7 drawers, which will accommodate 271 slides per drawer. The system is constructed of welded steel for durability and requires 0.23 m² of floor space. Slide backstops easily attach to the inside of the drawers to hold slides in place when drawer is not full. Also available is a slide liner (spring) to hold slides upright during drying process.

Item code	Description
4010	Tissue-Tek® Lab Aid® Floor Base, Green
4011	Tissue-Tek® Lab Aid® Floor Base, Beige
4012	Tissue-Tek® Lab Aid® Top Panel, Green
4013	Tissue-Tek® Lab Aid® Top Panel, Beige
4014	Tissue-Tek® Lab Aid® Drawer Section 14 x 25 x 76 mm, Green (6.500 slides)
4015	Tissue-Tek® Lab Aid® Drawer Section 14 x 25 x 76 mm, Beige (6.500 slides)
4016	Tissue-Tek® Lab Aid® Drawer Section 7 x 76 x 50 mm, Green (1.897 slides)
4017	Tissue-Tek® Lab Aid® Drawer Section 7 x 76 x 50 mm, Beige (1.897 slides)
4018	Tissue-Tek® Lab Aid® 25 mm Backstop, Green
4019	Tissue-Tek® Lab Aid® 25 mm Backstop, Beige
4020	Tissue-Tek® Lab Aid® Slide Liner
4027	Tissue-Tek® Lab Aid® 25 mm Drawer Vertical Filing, Green (465 slides)
4038	Tissue-Tek® Lab Aid® Paraffin Block Unit Section, Beige (1.000 blocks)





Index Product Catalogue

4 Sakura Services

9 Grossing

Grossing Stations

- 10 Tissue-Tek® Accu-Edge® Elevating Grossing Station
- 10 Tissue-Tek® Accu-Edge® Countertop Work Station
- 10 Tissue-Tek® Accu-Edge® Pathology Work Station

Grossing Tools System

- 12 Tissue-Tek® Accu-Edge® Grossing Board
- 12 Tissue-Tek® Accu-Edge® Grossing Forks
- 12 Tissue-Tek® FormaGO®

Grossing & Trimming

- 13 Tissue-Tek® Accu-Edge® Trimming Knife Series
- 13 Tissue-Tek® Accu-Edge® Dissecting Scalpel Series
- 13 Tissue-Tek® Accu-Edge® Autopsy Knife Series
- 13 Tissue-Tek® Accu-Edge® Safety Trimming Knife Handle & Blades Series
- 14 Tissue-Tek® Accu-Edge® Replaceable Blade Scissors

15 Identification

Multi Cassette Printer

- 16 Tissue-Tek® AutoWrite® Cassette Printer

Stacked Cassettes

- 18 Stacks Tissue-Tek® Paraform® Frames
- 18 Stacks Tissue-Tek® Uni-Cassette®
- 18 Stacks Tissue-Tek® Embedding Cassette

19 Tissue Processing

Continuous Rapid Tissue Processors

- 20 Tissue-Tek Xpress® x120

Vacuum Infiltration Processors

- 22 Tissue-Tek VIP® 6 AI
- 24 Histo-Tek® VP1™

- 25 Tissue-Tek® Tissue-Clear® Xylene Substitute
- 25 Tissue-Tek® Paraffin Wax

27 Tissue Embedding

Automated Embedding System

- 28 Tissue-Tek AutoTEC® a120 & Tissue-Tek® Paraform®
- 29 Tissue-Tek® Paraform® Cassettes
- 31 Tissue-Tek® Paraform® Tissue Orientation Gels

Tissue Embedding Console System

- 32 Tissue-Tek® TEC™ 5
- 32 Tissue-Tek® TEC™ Plus Cryo Console

- 34 Tissue-Tek® Cassettes
- 34 Tissue-Tek® Biopsy Bags
- 36 Tissue-Tek® Base Mold System

39 Microtomy**Automated Microtome**

40 Tissue-Tek AutoSection®

Rotary Microtome

42 Accu-Cut® SRM™ 200

Slides & Coverslips

43 Tissue-Tek® Glas™ Microscope Slides

43 Tissue-Tek® Autowrite® Non-Adhesive Slides

43 Tissue-Tek® Autowrite® Adhesive Slides

44 Tissue-Tek® Autowrite® Advanced Adhesive Slides

44 Tissue-Tek® SmartWrite® Slides

44 Tissue-Tek® Glas™ Coverslips

44 Tissue-Tek® Super Mega Slides & Coverslips

45 Tissue-Tek® Glas™ g2 Coverslips & Easy Holder

45 Accu-Edge® Disposable Microtome Blades

45 Tissue-Tek® Cold Plate

47 Staining & Coverslipping**Automated Slide Stainer & Coverslipper**

48 Tissue-Tek Prisma® Plus & Tissue-Tek Film®

52 Tissue-Tek Prisma® Plus & Tissue-Tek® Glas™ g2

Random Access & Multiple Slide Stainer

56 Tissue-Tek® DRS™ 2000

57 Tissue-Tek® Manual Slide Staining Kit

57 Tissue-Tek Film®

57 Tissue-Tek® Mounting Media

58 Tissue-Tek® Glas™ g2 Coverslips & Easy Holder

58 Tissue-Tek® Glas™ Coverslips

59 Imaging

60 VisionTek® Live Digital Microscope

63 Cryotomy64 Tissue-Tek® Cryo₃® Flex Microtome/Cryostat

65 Tissue-Tek® O.C.T.™ Compound

67 Cytology

68 Tissue-Tek® Cyto-Tek® 2500 Cyto-centrifuge

69 Archiving

70 Tissue-Tek® Lab Aid® Ultra™ II Cabinets

70 Tissue-Tek® Uni-Cassette® Filing Cabinets

70 Tissue-Tek® Lab Aid® Filing Cabinet System

Index - alphabetical order

A	Tissue-Tek® AutoTEC ® a120 Automated Embedding System	28
B	Tissue-Tek® Base Mold System	36
	Tissue-Tek® Biopsy Bags	34
	Blades	
	Accu-Edge® Disposable Microtome Blades	45
C	Cabinet Systems	
	Tissue-Tek® Lab Aid® Filing Cabinet System	70
	Tissue-Tek® Lab Aid® Ultra™ II Cabinets	70
	Tissue-Tek® Uni-Cassette® Filing Cabinets	70
	Cassettes	
	Tissue-Tek® Paraform® Cassettes	29
	Tissue-Tek® Cassettes	33
	Coverslipping	
	Tissue-Tek® Glas™ g2 Coverslips & Easy Holder	58
	Tissue-Tek® Glas™ Coverslips	58
	Tissue-Tek® Super Mega Slides & Coverslips	44
	Tissue-Tek Prisma® <i>Plus</i> & Film®	48
	Tissue-Tek Prisma® <i>Plus</i> & Glas™ g2	52
	Tissue-Tek® Coverslipping Film	57
	Tissue-Tek® Cyto-Tek® 2500 Cytocentrifuge	68
	Tissue-Tek® Cold Plate	45
	Tissue-Tek® Cryo ₃ ® Flex Microtome/Cryostat	64
F	Tissue-Tek® FormaGO®	12
G	Grossing Stations	
	Tissue-Tek® Accu-Edge® Countertop Work Station (Grossing Station)	10
	Tissue-Tek® Accu-Edge® Elevating Grossing Station	10
	Tissue-Tek® Accu-Edge® Grossing Board	12
	Tissue-Tek® Accu-Edge® Grossing Forks	12
	Tissue-Tek® Accu-Edge® Pathology Work Station (Grossing Station)	10
K	Accu-Edge® Autopsy Knife Series	13
	Accu-Edge® Safety Trimming Knife Handle & Blades Series	13
	Accu-Edge® Trimming Knife Series	13
M	VisionTek® live digital Microscope	60

	Microtomes	
	Accu-Cut® SRM™ 200 Microtome	42
	Tissue-Tek AutoSection® Automated Microtome	40
	Tissue-Tek® Mounting Media	57
O	Tissue-Tek® O.C.T. ™ Compound	65
	Tissue-Tek® Paraform® Tissue Orientation Gels	31
P	Tissue-Tek® Paraffin Wax	25
	Printers	
	Tissue-Tek® AutoWrite® Cassette Printer	16
	Processors	
	Tissue-Tek® VIP® 6 AI Processor	22
	Histo-Tek® VP1™ Jr. Processor	24
	Tissue-Tek Xpress® x120 Continuous Rapid Tissue Processor	20
S	Sakura Services	4
	Accu-Edge® Dissecting Scalpel Series	13
	Accu-Edge® Replaceable Blade Scissors	14
	Slides	
	Tissue-Tek® AutoWrite® Adhesive Slides	43
	Tissue-Tek® AutoWrite® Advanced Adhesive Slides	44
	Tissue-Tek® Glas™ Microscope Slides	43
	Tissue-Tek® AutoWrite® Non-Adhesive Slides	43
	Tissue-Tek® SmartWrite® Slides	44
	Staining	
	Tissue-Tek® DRS™ 2000 Multiple Slide Stainer	56
	Tissue-Tek Prisma® <i>Plus</i> & Tissue-Tek Film® Stainer & Coverslipper	48
	Tissue-Tek Prisma® <i>Plus</i> & Tissue-Tek® Glas™ <i>g2</i> Stainer & Coverslipper	52
	Tissue-Tek® Manual Slide Staining Kit	57
T	Tissue-Tek® TEC™ 5	32
	Tissue-Tek® TEC™ Plus Cryo Console	32
X	Tissue-Tek® Tissue-Clear® Xylene Substitute	25



Visit us at sakura.eu

Colofon Product Catalogue

For information about your local distributor,
please visit our website www.sakura.eu

Chamber of Commerce Leiden 28065449
The Bank of Tokyo, Amsterdam 63.56.12.283
IBAN: NL32BOTK0635612283 - BIC: BOTKNL2X
V.A.T. NL 8032.73.769 B01

Design

VRHL Content en Creatie,
Alphen aan den Rijn, www.vrhl.nl

January 2018/ Volume 12



Please visit our website sakura.eu

Sakura Finetek Europe B.V., Flemingweg 10A, 2408 AV Alphen aan den Rijn,
P.O. Box 362, 2400 AJ Alphen aan den Rijn, The Netherlands

