



Kenobi

Adjustable flow rate and stream patterns hand nozzle - 150 and 235 ranges

MOP_LAM_02767_EN - 16/07/24

DESIGNATION	FIELD
Product type	Hand nozzle
Product	Adjustable flow rate and stream patterns hand nozzles, 150 and 235 range
Products referenced	<p>Magikenobi : 49573, 49653, 49686, 49580, 49689, 49650, 49584</p> <p>Debikenobi 49572, 49652, 49685, 49579, 49688, 49649, 49583</p> <p>Turbokenobi : 49574, 49654, 49687, 49581, 49690, 49651, 49585</p> <p>References used for visuals: 49572</p>
N° of documentation	MOP_LAM_02767
Language	English
Creation Date	16/07/2024
Latest modification	-
Revisions tracking :	<p>Rev. A - 16/07/2024:</p> <p>- Original file</p>

IDENTIFICATION	2
TABLE OF CONTENTS	3
WARNING.....	4
1 • NOTE	4
2 • GENERAL WARNING.....	4
3 • SECURITY	4
4 • INTRODUCTION	4
5 • DISMANTLING AND SPARE PARTS	4
6 • USE.....	5
7 • LIMITS OF USE	5
TECHNICAL DATA	6
1 • MAIN VIEW.....	6
2 • OVERALL DIMENSIONS	7
3 • TECHNICAL CHARACTERISTICS.....	8
4 • TABLE OF REFERENCES	9
5 • FLOW RATE / PRESSURE CURVE.....	10
USE	11
1 • PRIOR TO PRESSURIZATION.....	11
2 • OPENING	11
3 • FLOW RATE ADJUSTMENT AND FLUSH	11
4 • JET ADJUSTMENT	12
MAINTENANCE	13
1 • CLEANING.....	13
2 • SPARE PARTS	13
3 • HANDLING / TRANSPORT / STORAGE	13
BILL OF MATERIALS	14
1 EXPLODED VIEW, NOZZLE BODY	14
2 • NOMENCLATURE.....	15
3 • EXPLODED VIEW, THE DIFFERENTS DIFFUSIONS HEAD	17
4 • EXPLODED VIEW, THE DIFFERENTS INLET COUPLING.....	18

1 • Note

POK SAS reserves itself the right to change or modify the specifications of its products at any time to incorporate the latest technological and regulatory developments. The information contained in this document is therefore subject to change without notice.

2 • General Warning



Before using or installing the equipment, it is essential for the safety of people and equipment to read the information contained in this operating manual before using the equipment. The operating and safety instructions described in the manual must be strictly observed.

The non-compliance of safety instructions can be dangerous and cause serious bodily harm and/or property damage.

3 • Security



This symbol indicates important safety tips. Pay careful attention to prevent serious bodily harm and/or property damage.



This symbol indicates instructions that must be observed to ensure smooth operation of the device. Please always make sure to follow all the necessary precautions.



This symbol indicates useful information to know and understand the correct operation of the device.

4 • Introduction

Please read the information contained in this manual before using or operating the equipment.

The use, maintenance, or any other operation relating to the equipment must be carried out exclusively by personnel informed of the safety rules and trained in the use of this equipment.

While using the fire nozzle (use, maintenance, installation, ...) it is important to wear personal protective equipment.

5 • Dismantling and spare parts

The exploded views and parts lists are not a dismantling manual.

Any disassembly or maintenance work on the appliance must be carried out with the water supply cut off.



The dismantling of the device outside the POK SAS workshops is tolerated, only if the procedure is described in this document. If a repair takes place, spare parts must have been supplied by POK SAS. Although not specified in the instructions, appropriate safety equipment must be worn when carrying out maintenance operations.

Do not modify the equipment, it may render it inoperative or dangerous to use.

6 • Use

Please respect the technical limitations of the equipment.

The equipment should not be used if a component is damaged or missing.



Disrespect of safety instructions and use of the nozzle over the recommended pressure can be dangerous and even cause death.

It is important to know and respect the safety rules regarding your operating environment.

In case of fire that occurs near or caused by electrical installations, it is imperative to:

- 1) Turn off the power supply as soon as possible.
- 2) Maintain a safe distance of at least 1 meter up to 1,000 volts.
- 3) To use a spray with a minimum 30° angle.

Before placing the hand nozzle in service, check :



- 1) No part is damaged, broken or missing.
- 2) That the coupling is perfectly connected to the hose.
- 3) The coupling inlet rotates freely.
- 4) The opening and closing of the valve.
- 5) That the flowrate ring works properly
- 6) That the stream pattern selector rotates properly.

POK SAS is not responsible of any accident that may occur during operation caused by improper use or non-compliance with safety requirements.

7 • Limits of use



Our nozzles are guaranteed for a maximum operating pressure of PN 16 (16 PSI).

Our hand nozzles are guaranteed to function properly up to a maximum test pressure of 25,5 bar in closed position.

Without explicit written authorization from POK, the warranty will be void if the pressures listed above are exceeded.

1 • Main view



MARKS	DESCRIPTION
1	Head sheath
2	Stream pattern adjustment ring
3	Flow rate adjustment ring
4	Body
5	Shutoff handle
6	Input see table page 9
7	Pistol grip

2 • Overall dimensions



See dimensions, page 9

3 • Technical characteristics

FIELDS	DESCRIPTION
Code	49573, 49653, 49686, 49580, 49689, 49650, 49584, 49572, 49652, 49685, 49579, 49688, 49649, 49583, 49574, 49654, 49687, 49581, 49690, 49651, 49585
CONSTRUCTION	
Body, ring, bore, sheat, crosspiece	• Aluminium alloy, hard anodisation
Inlet coupling	• Aluminium alloy
Pistol grip and operating handle	• Polymer
Screws, balls	• Stainless steel
Gaskets	• Nitrile NBR
HYDRAULIC CHARACTERISTICS	
Maximum working pressure	• 16 bar (with non adapted PN40 connection) • 40 bar (with suitable connection)
Flow rate	• See page 9
Type of diffusion	• See page 9
Type of diffusion	• Models Debikenobi and Magikenobi : full-cone diffusion • Modèle Turbokenobi : hollow-cone diffusion • Full cone diffusion
Stream pattern adjustment	• By turning head ring • Straight stream, narrow spray or full fog diffusion spray
Shutoff	• Sliding valve • Operating handle from closed position to maximum flow rate
Flowrate adjustment	• By turning flow rate adjustment ring • "FLUSH" position on right stop. • 4 flow rates, depending on the model, see page 9
MECHANICAL CHARACTERISTICS	
Inlet	• See page 9 Note : A different coupling is available upon request. See our catalogue for more information on couplings.
STANDARDS	
Hand nozzle	• EN 15182-2

4 • Table of references

4.1 • Magikenobi (molded teeth)

Code	Flowrate (lpm)	Inlet	Pression working (bar)	AxBxC (mm)	Weight (kg)
49573	20 - 40 - 100 - 150	1" female BSP	6	275 x 120 x 228	1.45
49653	20 - 40 - 100 - 150	2" female BSP	6	299 x 120 x 228	1.55
49686	20 - 40 - 100 - 150	GFR female DN20	6	316 x 120 x 228	1.60
49580	40 - 75 - 100 - 150	1" female BSP	6	275 x 120 x 228	1.40
49689	40 - 75 - 100 - 150	GFR female DN20	6	316 x 120 x 228	1.60
49650	40 - 100 - 150 - 235	1" female BSP	6	275 x 120 x 228	1.45
49584	40 - 100 - 150 - 235	DSP DN40	6	348 x 120 x 228	1.67

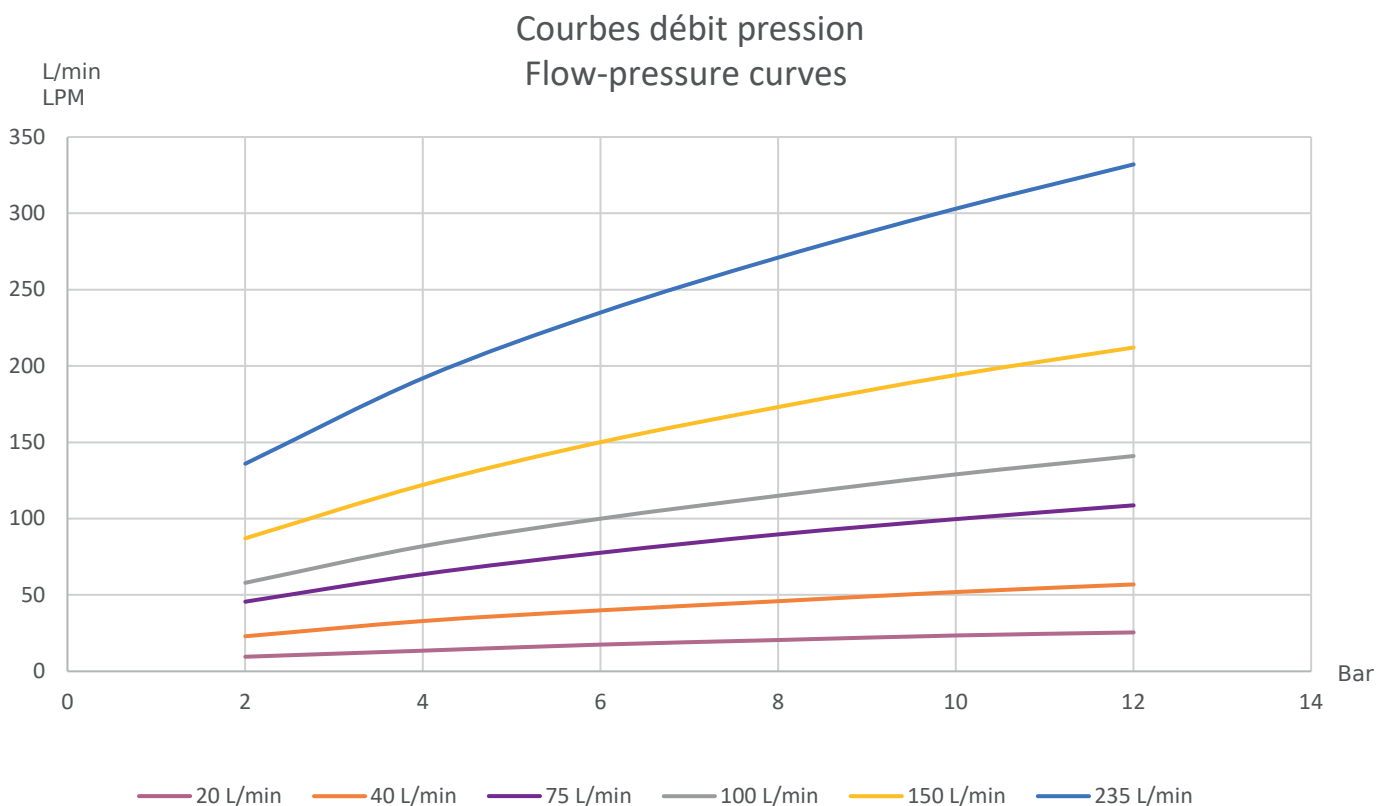
4.2 • Debikenobi (cut teeth)

Code	Flowrate (lpm)	Inlet	Pression working (bar)	AxBxC (mm)	Weight (kg)
49572	20 - 40 - 100 - 150	1" female BSP	6	275 x 120 x 228	1.42
49652	20 - 40 - 100 - 150	2" female BSP	6	299 x 120 x 228	1.51
49685	20 - 40 - 100 - 150	GFR female DN20	6	316 x 120 x 228	1.57
49579	40 - 75 - 100 - 150	1" female BSP	6	275 x 120 x 228	1.40
49688	40 - 75 - 100 - 150	GFR female DN20	6	316 x 120 x 228	1.60
49649	40 - 100 - 150 - 235	1" female BSP	6	275 x 120 x 228	1.42
49583	40 - 100 - 150 - 235	DSP DN40	6	348 x 120 x 228	1.68

4.3 • Turbokenobi (spinning teeth)

Code	Flowrate (lpm)	Inlet	Pression working (bar)	AxBxC (mm)	Weight (kg)
49585	20 - 40 - 100 - 150	1" female BSP	6	275 x 120 x 228	1.41
49654	20 - 40 - 100 - 150	2" female BSP	6	299 x 120 x 228	1.50
49687	20 - 40 - 100 - 150	GFR female DN20	6	316 x 120 x 228	1.60
49581	40 - 75 - 100 - 150	1" female BSP	6	275 x 120 x 228	1.40
49690	40 - 75 - 100 - 150	GFR female DN20	6	316 x 120 x 228	1.56
49651	40 - 100 - 150 - 235	1" female BSP	6	275 x 120 x 228	1.41
49585	40 - 100 - 150 - 235	DSP DN40	6	348 x 120 x 228	1.71

5 • Flow rate / pressure curve



Flow rate (lpm)	20	40	75	100	150	235
Range (in meters)	18	21	25	27	30	35

1 • Prior to pressurization

- **1** - Check that there are no missing or damaged parts.
- **2** - Check that the hand nozzle is correctly connected to a water supply.

Note: To obtain optimal performance, respect the following limits:

- flow rate ; flow rates indicated on the hand nozzle (depending on reference)
- working pressure: 6 bar



2 • Opening

The shutoff handle allows to gradually go from closed position to maximum flow rate. To obtain the flow rate at 6 bar, the handle must be opened to the maximum position.



3 • Flow rate adjustment and flush

Adjustable flow rate and flush by rotating flow rate ring. The available flow rates are engraved on the flow rate selecting ring. By rotating the ring to the desired setting, the flow rate will be set to this value at the 7 bar reference pressure.

A tactile indicator allows the user to know the maximum flow rate setting even in total darkness and while wearing firefighting gloves (conform to EN 659).

This ring also has a position marked FLUSH. This position allows the removal of particles which could interfere with the proper hydraulic operation of the hand nozzle.



Position
20 lpm



Position
40 lpm



Position
100 lpm



Position
150 lpm



Position
FLUSH



4 • Jet adjustment

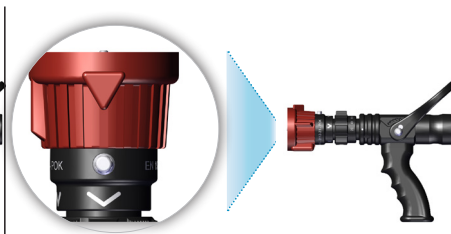
Rotation of the head ring allows the user to progress from a straight spray, to a narrow spray "Flash Over" (35°), to a wide angle spray (100°) forming a wall of water. Tactile and visual indicators permit the user to know the type of stream even in total darkness and while wearing firefighting gloves conforming to EN659.



STRAIGHT spray



ATTACKJET



FULL FOG DIFFUSION SPRAY

1 • Cleaning

It is recommended to clean the inside and outside of the hand nozzle with clean water after each use (manoeuvres have to be carried out with the hand nozzle being pressurized).

It is recommended to disassemble the diffuser once a year if it is used continuously with salt or brackish water. Clean and dry all components, gaskets, O rings and grease them as per POK Procedure provided with the spare parts kit available on order. This service can be provided by our workshop, please contact us for pricing.

If the hand nozzle is not working properly, ensure that there is no foreign object preventing it from functioning properly. If it still does not work properly, please contact us to obtain the procedures of disassembly or return the product for a repair in our factory.

2 • Spare parts

Depending on use and/or storage conditions, some parts may wear out quicker than others. Contact our sales department in order to obtain information about return or to get a price list. Use exploded views and part lists to accurately identify parts.

3 • Handling / Transport / Storage

General Information

When unpacking the equipment after transport, check that there is no mechanical damage and/or loose parts in the interior of the package. In case of damage, the carrier must be informed immediately. In this case, do not put the equipment in use.

Delivery Information

POK equipment is delivered in a double-walled cardboard box. We use cushioning equipment to prevent products from bumping into each other. The package is securely closed with adhesive tape. A delivery note is included with the equipment.

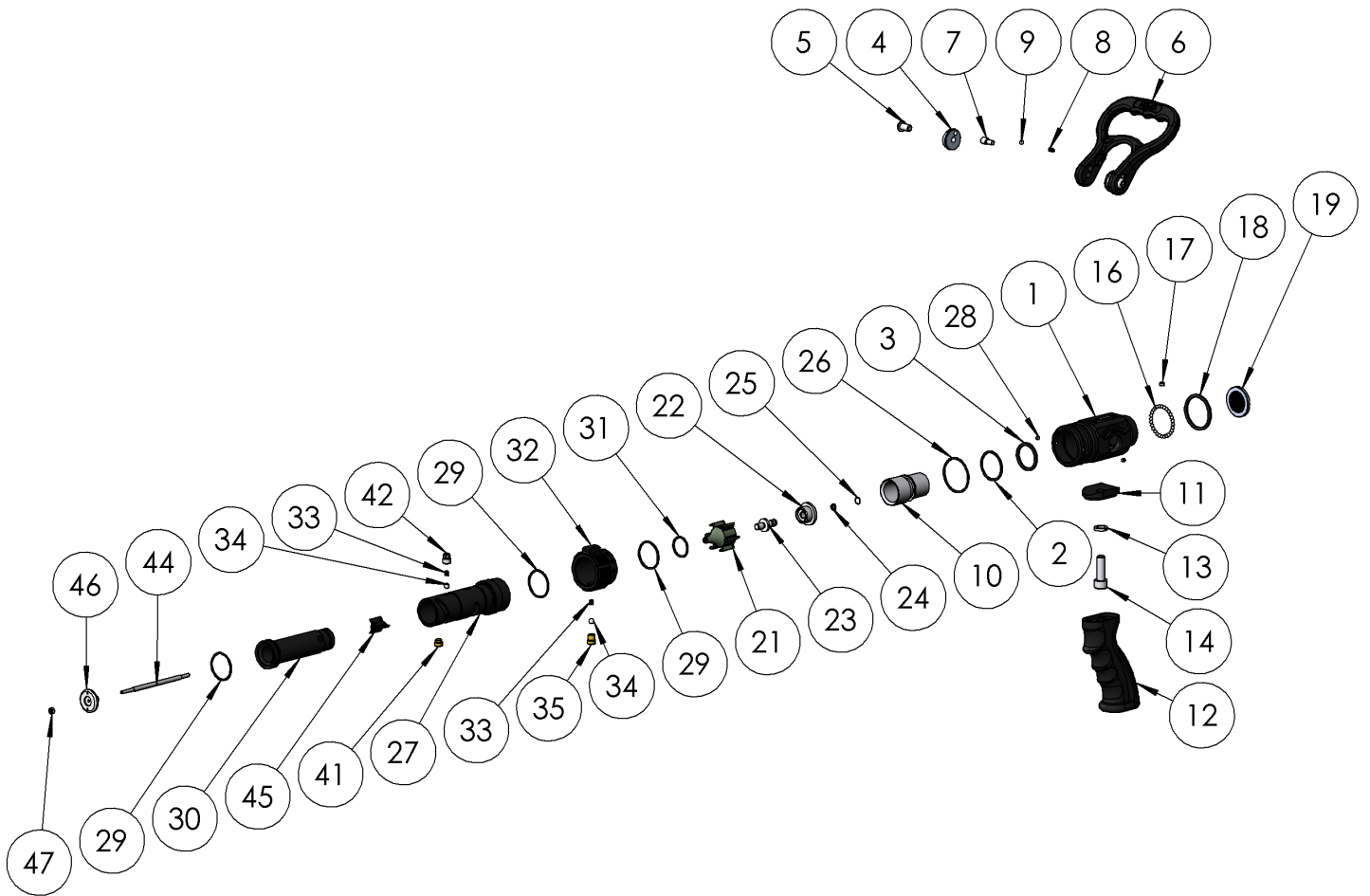
Shipment of Equipment

In case of reshipping the equipment, or transferring the shipment to other sites, the shipping process above should be followed.

Storage of Equipment

When storing the device, it is recommended to keep it in its original packaging to protect from humidity, dust and kept at a temperature between -20°C and + 70°C.

1 Exploded View, nozzle body



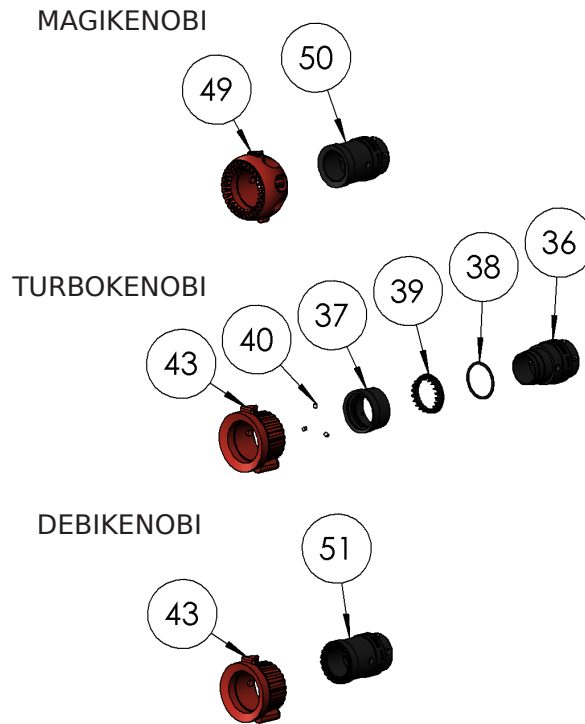
MOP_LAM_02767_EN - 16 July 2024 3:39 - Copyright© POK SAS - Illustrations are only informative

2 • Nomenclature

MARK	QTY	DESCRIPTION	REF.	SPARE PART
1	1	BODY	37409	
2	1	GASKET Ø32xØ2.5	16832	
3	1	O'RING R21	08221	
4	2	TRUNNION	40229	
5	2	HSBH SCREW M8X14 STAINLESS STEEL A2 ISO 7380	-	
6	1	OPERATING HANDLE	37406	
7	2	TRUNNION AXLE	00758	
8	2	INDEX SPRING	47002	
9	2	BEAD Ø5	16316	
10	1	SLIDE VALVE	00776	
11	1	ADAPTER	37408	
12	1	PISTOL HANDLE	37407	
13	1	GROWER WASHER W M10 STAINLESS STEEL A2 DIN 127 B	-	
14	1	SETSCREW M10X30 STEEL A2 ISO 4762	-	
15	2	INLET 1" BSP FEMALE THREAD	35430	
16	28	BALL Ø4 STAINLESS STEEL	16395	
17	1	FLAT HC SCREW M6X4 STAINLESS STEEL A2 ISO 4026	-	
18	1	O'RING R27	08227	
19	1	1" DN FILTER	43405	
	1	INLET FILTER	37002	
20	1	FLAT GASKET FOR THREAD BOTTOM 1" BSP	06162	
21	1	CROSS BRACE	49576	
22	1	SLIDE VALVE SEAT	49577	
23	1	STEM SCREW	49578	
24	1	O'RING R4	08204	
25	1	STOP RING VSM-8-S02,8	06643	
26	1	O'RING Ø40 x Ø2,5	16842	
27	1	BINDER (20 - 40 - 100 - 150)	49575	
	1	BINDER (20 - 75 - 100 - 150)	49582	
	1	BINDER (40 - 100 - 150 - 235)	49586	
28	2	NEEDLE H SCREW M4X5 STAINLESS STEEL A2 ISO 4027	-	
29	3	GASKET Ø30 x Ø2	16833	
30	1	INNER BORE	35426	
31	1	GASKET Ø22 X Ø2	16853	
32	1	FLOW RATE RING	48908	

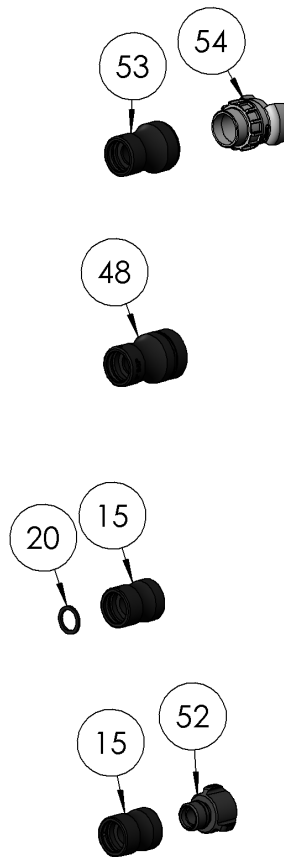
MARK	QTY	DESCRIPTION	REF.	SPARE PART
33	2	INDEX SPRING	08019	
34	2	BEAD Ø6,35 - GRADE 100 STAINLESS STEEL 304 - ISO 3290	16204	
35	1	FLOW RATE INDEX	23168	
36	1	GUIDE RING	49589	
37	1	SPINNING TEETH HOLDER	40433	
38	1	GASKET Ø38 x Ø2,5	16475	
39	1	SPINNING TEETH	00149	
40	3	FLAT HC SCREW M4X5 STAINLESS STEEL A2 ISO 4026	-	
41	1	STREAM GUIDE	23170	
42	1	INDEX KNOB FOR BALL Ø 6,35	27204	
43	1	HEAD SHEATH	20931	
44	1	STEM AXLE	44475	
45	1	CENTERING CROSS PIECE	24873	
46	1	VALVE	08116	
47	1	NUT H M4 STAINLESS STEEL A2 ISO 4032	-	
48	1	INLET 2" BSP MALE THREAD	34979	
49	3	HEAD SHEATH	24805	
50	1	HEAD RING	49588	
51	1	HEAD RING	49587	
52	1	GFR DN20 FEMALE COUPLING - 1" MALE BSP	47135	
53	1	M45 X 1.50 FEMALE THREAD	37001	
54	1	DSP DN 40 COUPLING WITH LOCK, M45 X 1.50 MALE THREAD	04621	

3 • Exploded View, the different diffusions head



MARK	QTY	DESCRIPTION	REF.	SPARE PART
36	1	GUIDE RING	49589	
37	1	SPINNING TEETH HOLDER	40433	
38	1	GASKET Ø38 x Ø2,5	16475	
39	1	SPINNING TEETH	00149	
40	3	FLAT HC SCREW M4X5 STAINLESS STEEL A2 ISO 4026	-	
43	1	HEAD SHEATH	20931	
49	3	HEAD SHEATH	24805	
50	1	HEAD RING	49588	
51	1	HEAD RING	49587	

4 • Exploded View, the different inlet coupling



MARK	QTY	DESCRIPTION	REF.	SPARE PART
15	2	INLET 1" BSP FEMALE THREAD	35430	
20	1	FLAT GASKET FOR THREAD BOTTOM 1" BSP	06162	
48	1	INLET 2" BSP MALE THREAD	34979	
52	1	GFR DN20 FEMALE COUPLING - 1" MALE BSP	47135	
53	1	M45 X 1.50 FEMALE THREAD	37001	
54	1	DSP DN 40 COUPLING WITH LOCK, M45 X 1.50 MALE THREAD	04621	