

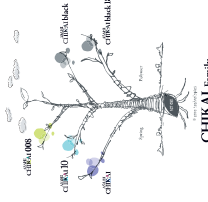
ASAHI CHIKAI Family

Neurovascular Guide Wire

Your dreams. Woven together.



Specification & ordering information						
Product	Crabclay No.	O.D.	Coating	Usable length	Coil length	Tip shape
ASAHI CHIKAI 008	WAN-CH008-200	0.20 / 0.26mm (0.008 / 0.010in)	Hydrophilic coating (SIP+COAT™) 190mm	200mm	9cm	Straight
	WAN-CH016-200	0.26mm (0.010in)	Hydrophilic coating (SIP+COAT™) 170mm	200mm	9.5cm	Straight
	WAN-CH016-300	0.26mm (0.010in)	Hydrophilic coating (SIP+COAT™) 170mm	300mm	9.5cm	Straight
ASAHI CHIKAI	WAN-CH0300	0.28mm (0.011in)	Hydrophilic coating (SIP+COAT™) 170mm	200mm	30cm	Straight
	WAN-CH0300-4C	0.28mm (0.011in)	Hydrophilic coating (SIP+COAT™) 170mm	200mm	30cm	Round curve
	WAN-CH0300	0.28mm (0.011in)	Hydrophilic coating (SIP+COAT™) 170mm	300mm	30cm	Straight
	WAN-CH0300-4C	0.28mm (0.011in)	Hydrophilic coating (SIP+COAT™) 170mm	300mm	30cm	Round curve
ASAHI CHIKAI black	WAN-CH0500-BS	0.32mm (0.013in)	Polymer jacket / Hydrophilic coating (SIP+COAT™) 170mm	200mm	30cm	Round curve
	WAN-CH0500-BSA	0.28mm (0.011in)	Polymer jacket / Hydrophilic coating (SIP+COAT™) 170mm	200mm	30cm	Angled 90°
ASAHI CHIKAI black 18	WAN-CH0600-BS	0.45 / 0.41mm (0.018 / 0.016in)	Polymer jacket / Hydrophilic coating (SIP+COAT™) 170mm	200mm	34cm	Round curve



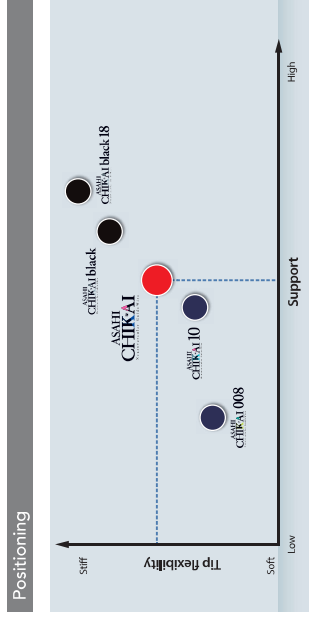
CE 0344

ASAHI INTECC and CHIKAI are trademarks or registered trademarks of ASAHI INTECC CO., LTD. in Japan and other countries. © ASAHI INTECC CO., LTD. 2014


Manufactured by: ASAHI INTECC

ASAHI INTECC

ASAHI INTECC CO., LTD.
 9-100 Araiha-cho, Saito, Aichi 485-0271 Japan
 Contact phone number: +81-53-454-1011
<http://www.asahi-intecc.com>



normal vessels / standard cases

tiny vessels / precision cases




tortuous vessels / complex cases




large vessels / high support cases

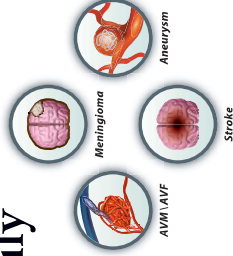



ASAHI CHIKAI Family

Neurovascular GuideWire

Providing good torque response, support and durability for neuro interventional procedures

ASAHI CHIKAI family of guide wires has been originally developed based on Asahi Intecc's unique set of technologies which accomplished great success in the field of cardiovascular interventions.



Technologies with Dual-coil design using ACT ONE

Employs the ASHI brand rope coil which provides torqueability, flexibility and resiliency.
 ASHI INTECC CO., LTD.'s unique technologies in wire drawing, wire forming, torque transmission and coating are utilized to create highly responsive guide wires featuring ASAHI'S ACT ONE dual-coil design.

Key features

- Precise torque response**
 - ACT ONE provides exceptional torque response in tortuous anatomy.
- Durable tip-shape retention**
 - Incorporating with ACT ONE, re-shapable pre-shaped round curve and 90 degree angle enhance tip shape memory and durability.
- Round curve**
 - Available for CHIKAI black and CHIKAI blue
- Angled 90°**
 - Available for CHIKAI black

ASAHI CHIKAI

Neurovascular GuideWire

ASAHI CHIKAI ASAHI CHIKAI 10 and ASAHI CHIKAI 008 are designed for an optimal balance between tip flexibility and microcatheter support

- 0.008" (0.203mm)
- 0.010" (0.254mm)
- 0.014" (0.354mm)



ASAHI CHIKAI 008 (200cm) – Soft flexible tip & distal body



- Distal anatomy / small-sized vessels
- Compatible with microcatheters with small inner lumen

ASAHI CHIKAI 10 (200cm, 300cm)

– Balanced tip and higher body support



- Mild to distal anatomy / larger-sized vessels
- Compatible with microcatheters with relatively larger inner lumen

ASAHI CHIKAI (200cm, 300cm)

– 0.36mm (0.014") workhorse guide wire



- Well-balanced workhorse wire

ASAHI CHIKAI black

Neurovascular GuideWire

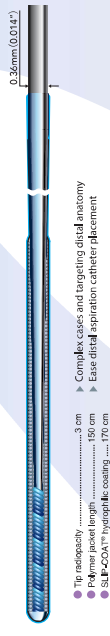
Providing excellent support and less friction due to polymer jacket and hydrophilic coating for smooth delivery of microcatheter

- 0.014" (0.354mm)
- 0.018" (0.457mm)



ASAHI CHIKAI black (200cm)

– 0.36mm (0.014") guide wire with enhanced lubricity



- Complex cases and targeting distal anatomy
- Ease distal aspiration catheter placement

ASAHI CHIKAI black 18 (200cm)

– Speciality guide wire



- Enough support to deliver large ID microcatheter
- Reverse tapered shaft design to avoid ledge effect
- Easy for retriever delivery and aspiration catheter placement