

**Relentless Innovation**  
for your diagnostic confidence

**SAMSUNG**



**V7**

**Take what you want**



Product Inquiry

# All the key benefits you want

The V7 offers a fascinating performance and gives you the possibility to do what you want with comprehensive tools that feature the latest innovations. Rich in features, V7's versatile system is capable of a wide range of clinical applications that allow you to explore to the fullest.



Overview video



## Diagnose diverse and challenging clinical cases

The V7 comes with a variety of tools for diverse and challenging cases. Healthcare professionals can execute targeted examinations with ease, using the necessary advanced features prepared in the right place.

### 2D imaging



ShadowHDR™



HQ-Vision™

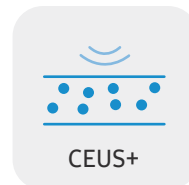


ClearVision

### Diagnostic features



S-Shearwave  
Imaging™



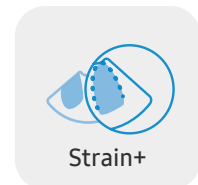
CEUS+



S-Fusion™



S-Detect™



Strain+

### Color imaging



MV-Flow™



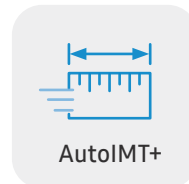
LumiFlow™



S-Flow™



Arterial  
Analysis™



AutoIMT+



StressEcho



NerveTrack™



NeedleMate+™

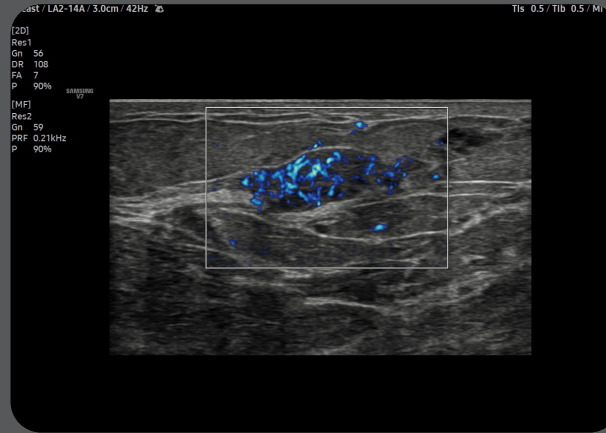
# Striking images for confidence



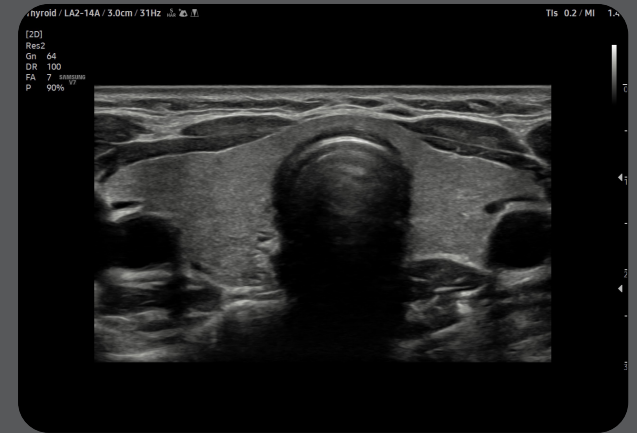
Image gallery



Pancreas



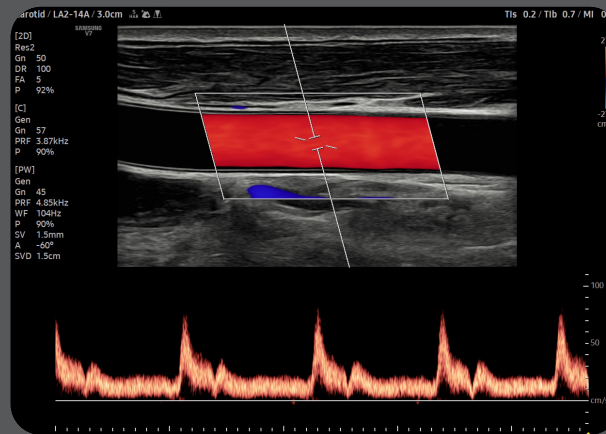
Breast nodule with MV-Flow™



Thyroid



Lipoma in superficial tissue



Carotid artery with triplex mode



Knee with Panoramic+

# Enriched diagnostic features with accuracy and precision

The V7 system comes with advanced features that assist in precise diagnosis and increasing throughput. The V7's variety of features and user-friendly interface aid in significantly improving the healthcare professionals' daily ultrasound examination experience.



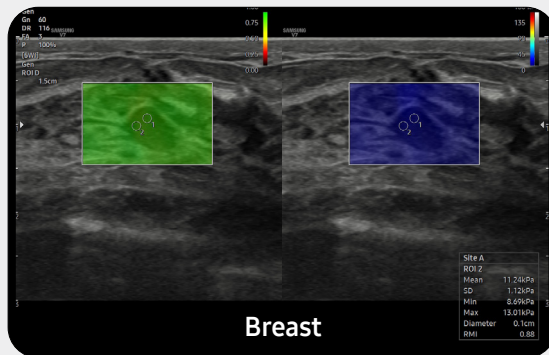
[Learn more](#)

## Display and quantify tissue stiffness in a non-invasive method

**S-Shearwave Imaging™**<sup>1</sup> allows the non-invasive assessment of stiff tissues in various applications. The color-coded elastogram, quantitative measurements, display options, and user-selectable ROI functions are useful for accurate diagnosis.



White paper



## Perform multi-modality fusion biopsies with high precision

**S-Fusion™**<sup>1</sup> enables simultaneous localization of a lesion using real-time ultrasound with other volumetric imaging modalities, enabling accurate targeting during interventional and other advanced clinical procedures.



White paper

## Contrast Enhanced Ultrasound

CEUS+<sup>1</sup> is a contrast agent imaging technology. The micro-bubble contrast agent injected into the body through the vein or alike is subjected to perform nonlinear resonance due to stimulation of ultrasound energy.



White paper

### Easy calculation of the strain ratio between two ROIs

**E-Strain™**<sup>1</sup> is designed to enable quick and easy calculation of the strain ratio between two regions of interest for day-to-day practice. Simply by setting the two targets, you can receive accurate, consistent results and make informed decisions in many types of diagnostic procedures.

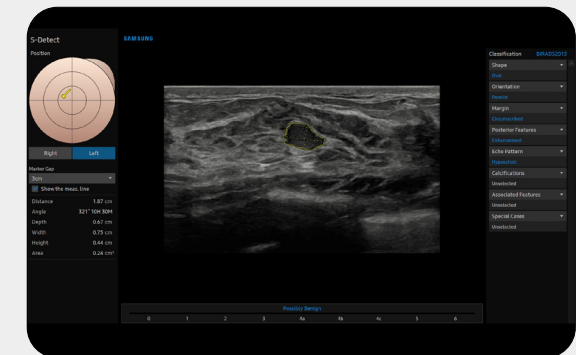
### Analyze selected breast lesions and report breast assessment



**S-Detect™ for Breast**<sup>1,4</sup> analyzes selected lesions in the breast ultrasound study and shows the analysis data, applies BI-RADS ATLAS\* to provide standardized reporting; and helps diagnosis with the streamlined workflow.



White paper



\* Breast Imaging-Reporting and Data System, Atlas  
It is a registered trademark of ACR and all rights reserved by ACR.

## Score and report wall motion

**StressEcho**<sup>1</sup> package includes wall motion scoring and reporting. It provides exercise StressEcho, pharmacologic StressEcho, diastolic StressEcho and programmable StressEcho.

## Detect functional changes of cardiovascular vessels

**ArterialAnalysis**<sup>TM 1</sup> detects functional changes of vessels, providing measurement values such as the stiffness, intima-media thickness, and pulse wave velocity of the common carotid artery.



White paper

## Analyze selected thyroid lesions and report thyroid assessment



**S-Detect**<sup>TM for Thyroid</sup><sup>14</sup> analyzes selected lesions in the thyroid ultrasound study and shows the analysis data, provides standardized reporting based on the ATA, BTA, EU-TIRADS, and K-TIRADS\* guidelines; and helps diagnosis with the streamlined workflow.

\* ATA: American Thyroid Association

BTA: British Thyroid Association

EU-TIRADS: European Thyroid Imaging Reporting and Data System

K-TIRADS: Korean Thyroid Imaging Reporting and Data System

## Quantify wall motion of the left ventricle

**Strain+**<sup>1</sup> is a quantitative tool for measuring global and segmental wall motion of the left ventricle (LV). Three standard LV views and a Bull's Eye are displayed in a quad screen for easy assessment of the LV function.



White paper

## Detect and track nerves with AI technology

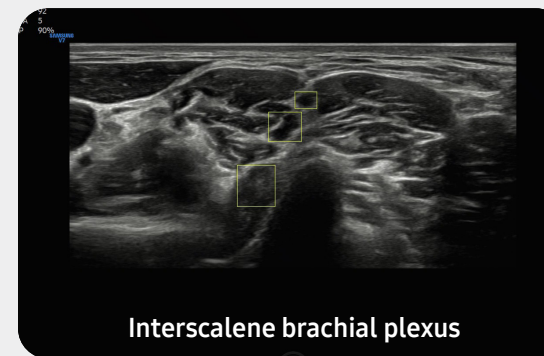
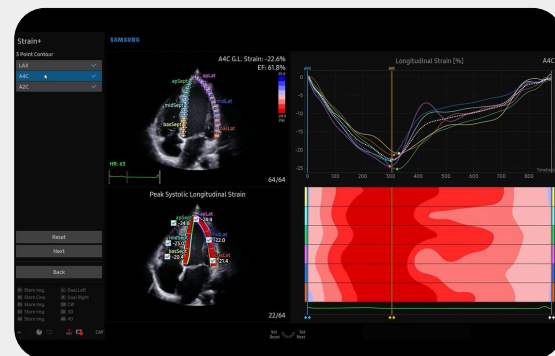
**NerveTrack**<sup>TM 1</sup> is a function that detects and provides information of the location of the nerve area in real-time during ultrasound scanning.



White paper

## Measure IMT in one click

**AutoIMT+**<sup>1</sup> is a screening tool to analyze a patient's potential risk of cardiovascular disease. It allows easy intima-media thickness measurement of both the anterior and posterior wall of the common carotid by the click of a button.



## Display needle tip clearly

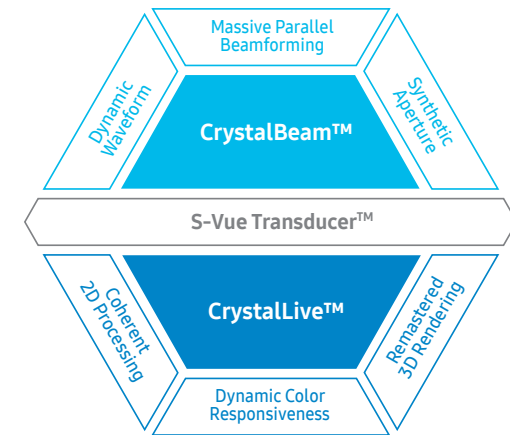
**NeedleMate+**<sup>TM 1</sup> delineates needle location when performing interventions such as nerve blocks. Improved accuracy and efficiency in procedure are possible with beam steering added to NeedleMate+<sup>TM</sup>.

**Other features** ElastoScan+<sup>TM 1</sup>, AutoEF<sup>1</sup>, Panoramic+<sup>1</sup>



# Extraordinary image quality delivers diagnostic confidence

Gain insight into complex issues with exceptional image quality and resolution by Samsung's core imaging engine, Crystal Architecture™. The proprietary technology combines enhanced 2D image processing and detailed color signal processing to optimize and refine the image. The cutting-edge V7 will provide outstanding image clarity for a confident diagnosis.



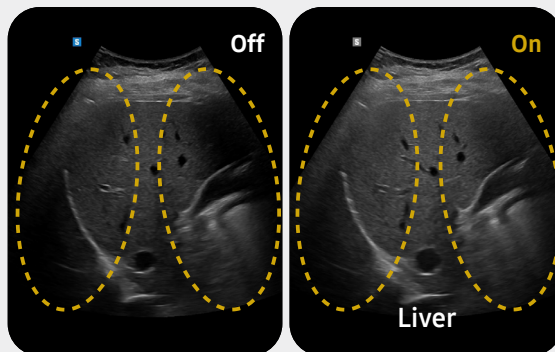
Crystal Architecture™

## Enhance hidden structures in shadowed regions

**ShadowHDR™** selectively applies high-frequency and low-frequency of ultrasound to identify shadow areas where attenuation occurs.

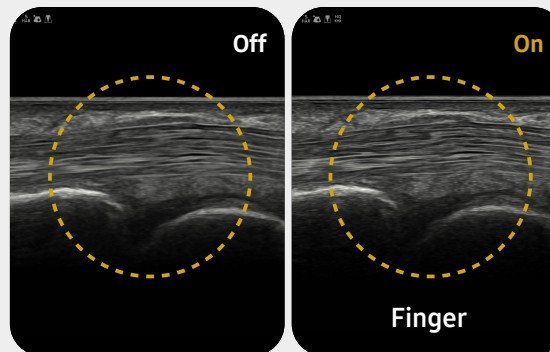


White paper



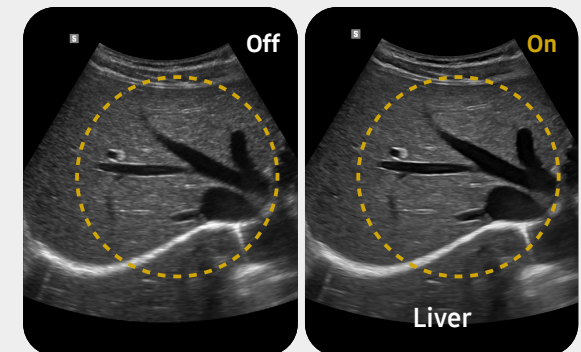
## Clean up blurry areas in the image

**HQ-Vision™** <sup>1</sup> provides clearer images by mitigating the characteristics of ultrasound images that are slightly blurred than the actual vision.



## Reduce noise to improve 2D image quality

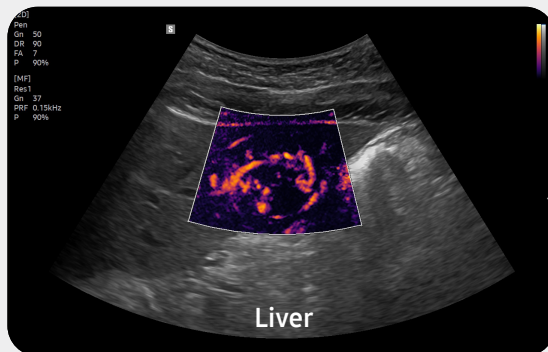
**ClearVision** enhances the edge contrast and creates sharp 2D images for optimal diagnostic performance.





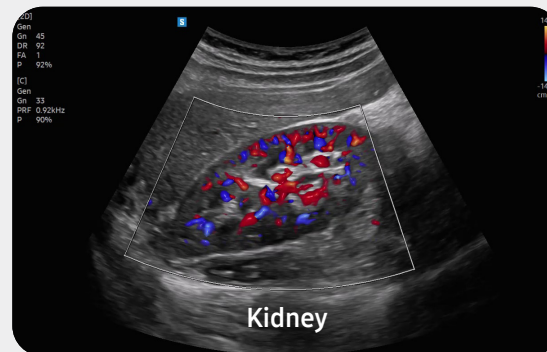
### Visualize slow flow in microvascular structures

**MV-Flow™**<sup>1</sup> visualizes microcirculatory and slow blood flow to display the intensity of blood flow in color.



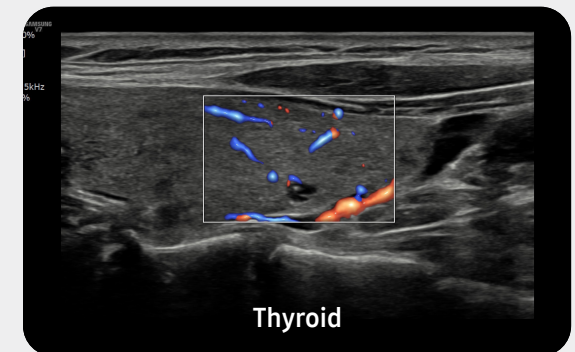
### Show blood flow in vessels in a 3D like display

**LumiFlow™**<sup>1</sup> is a function that visualizes blood flow in 3 dimensional-like to help understand the structure of blood flow and small vessels intuitively.



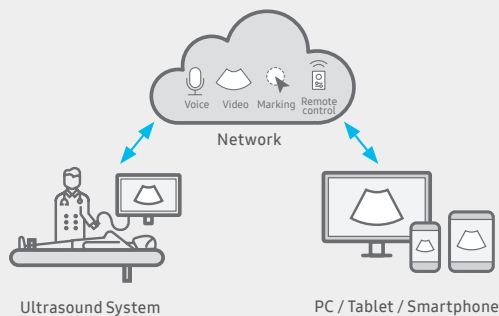
### Examine peripheral vessels with directional power Doppler

**S-Flow™**, a directional power Doppler imaging technology, can help to detect even the peripheral blood vessels. It enables accurate diagnosis when the blood flow examination is especially difficult.



# Efficient workflow re-designed for simplicity

Made to maximize efficiency, allow V7 to streamline your workflow and reduce various tasks to just a few steps or keystrokes. The user experience is enhanced through how V7 displays scan data more easily and accurately. To ensure utility, the ergonomic design makes optimal use of the user's working environment. V7 is committed to enhancing healthcare professionals' workflow by providing intuitive optimization.

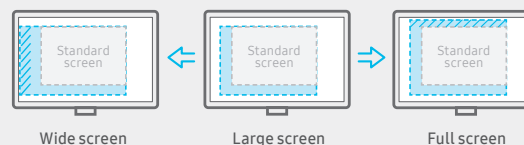


## Real-time image sharing, discussion, and remote control of ultrasound system

SonoSync™ 1,5 is a real-time ultrasound image sharing solution that allows voice communication and remote controllability for effective collaboration between physicians and sonographers at different locations.



Learn more

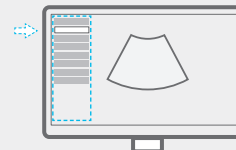


## See images in expanded view

The ultrasound examination can be performed while viewing the images and cines that are expanded at various ratios according to the user preference.

## Build predefined protocols to ensure every step is followed every time

EzExam+™ 1 ensures the full investigation is performed, eliminating the risk of forgetting an image or loop capture, as well as measurement and transducer preset changes.



## Customize frequently used functions on the touchscreen

TouchEdit, a customizable touchscreen, allows the user to move frequently used functions to the first page.



## Select transducer and preset combinations in one click

QuickPreset allows the user to select the most common transducer and preset combinations in one click.



Access directly to RIS from the system

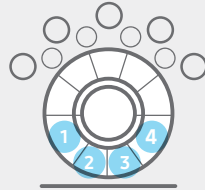
## Access to RIS from the browser of the ultrasound system

RIS Browser improves the workflow by allowing access to RIS through the embedded browser in the system. This allows for post processing without the need to move to a PC after scanning.



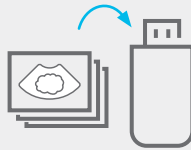
### Assign functions to the buttons near the trackball

The buttons around the trackball can be customized for easy selection of commonly used functions.



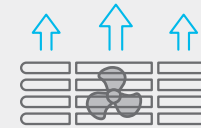
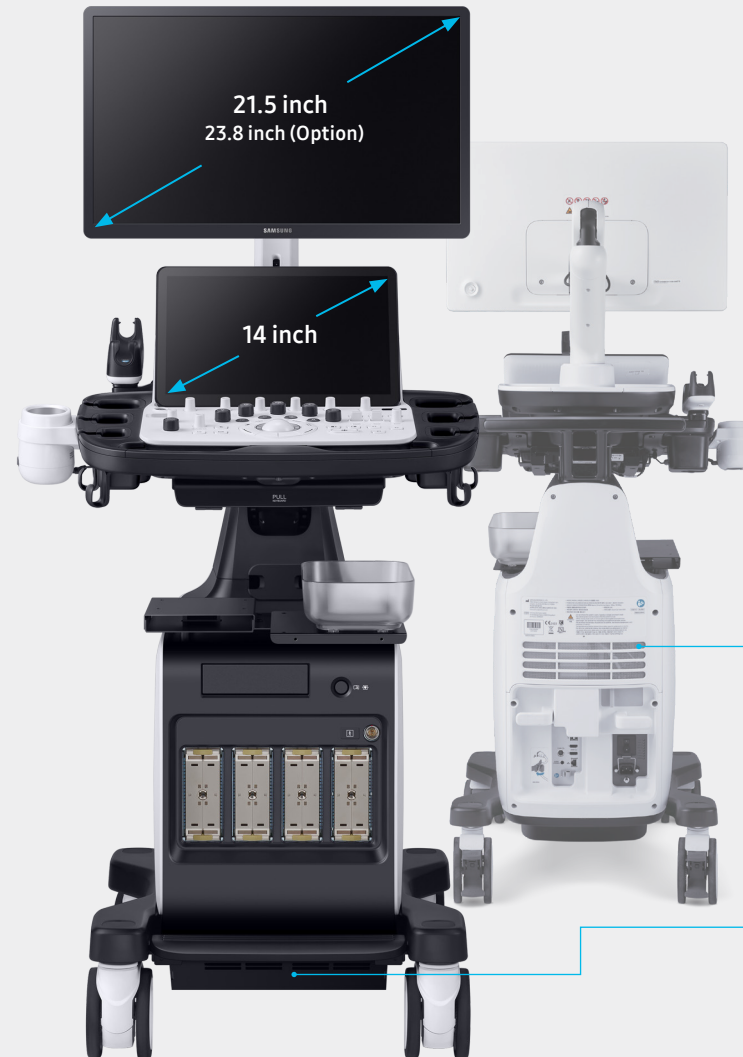
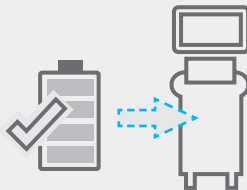
### Save image data directly to USB memory

**QuickSave** function allows image data to be saved directly on USB memory during the exam.



### Continue working even when AC power is temporarily unavailable

**BatteryAssist™** provides battery power to the system, enabling users to perform scans when AC power is temporarily unavailable. It also allows the system to be moved to another location without having to turn the power off and then back on.



### Effective cooling system

An effective airflow system cools down the ultrasound system by constantly letting heat out and reducing fan noise.



### Eco-friendly resin cover

Eco-friendly resin is applied to the air vent exterior cover, outlining Samsung's efforts towards a greener tomorrow.

# Comprehensive selection of transducers

## Curved array transducers



### CA1-7SD

Abdomen, Obstetrics,  
Gynecology, Pediatric,  
Musculoskeletal, Vascular,  
Urology, Thoracic



### CA3-10A

Abdomen, Obstetrics,  
Gynecology, Pediatric,  
Musculoskeletal, Vascular,  
Urology, Thoracic



### CA4-10M

Abdomen, Pediatric, Vascular



### PA1-5A

Cardiac, Vascular, Abdomen,  
Pediatric, TCD, Thoracic



### PA3-8B

Cardiac, Pediatric, Abdomen,  
Vascular, TCD

## Linear array transducers



### LA2-14A

Small parts, Vascular,  
Abdomen, Pediatric,  
Thoracic, Musculoskeletal



### LA3-22AI

Musculoskeletal,  
Intraoperative



### CV1-8AD

Abdomen, Obstetrics,  
Gynecology, Urology



### EV2-10A

Obstetrics, Gynecology,  
Urology

## Volume transducers

## Endocavity transducers



**EA2-11ARD \***  
Obstetrics, Gynecology,  
Urology



**EA2-11AVD \***  
Obstetrics, Gynecology,  
Urology

## CW transducers



**DP2B**  
Cardiac, Vascular, TCD



**CW6.0**  
Cardiac, Vascular

## TEE transducer



**MMPT3-7**  
Cardiac

### \* Ergonomic transducers

The new endocavity transducer supports natural grip by moving the max-width point to a more forward position and also increasing the length of the grip to allow balanced weight distribution.



Cleaning and  
disinfection guide

## Samsung healthcare cybersecurity

To address the emerging need for cybersecurity, Samsung provides a solution to support our customers by offering the tools to protect against cyberthreats that may compromise invaluable patient data and ultimately degrade the quality of care.



Learn more



Intrusion prevention



Access control



Data protection

## About Samsung Medison CO., LTD.

Samsung Medison, an affiliate of Samsung Electronics, is a global medical company founded in 1985. With a mission to bring health and well-being to people's lives, the company manufactures diagnostic ultrasound systems around the world across various medical fields. Samsung Medison has commercialized the Live 3D technology in 2001 and since being part of Samsung Electronics in 2011, it is integrating IT, image processing, semiconductor and communication technologies into ultrasound devices for efficient and confident diagnosis.

\* This product, features, options, and transducers may not be commercially available in some countries.

\* Sales and Shipments are effective only after the approval by the regulatory affairs.

Please contact your local sales representative for further details.

\* This product is a medical device, please read the user manual carefully before use.

1. Optional feature which may require additional purchase.

2. S-Vue Transducer™ is the name of Samsung's advanced transducer technology.

3. Strain value for ElastoScan+™ is not applicable in the United States and Canada.

4. Recommendations about whether results are benign or malignant in S-Detect™ are not applicable in the United States.

5. SonoSync™ is an image sharing solution.



ECO Package is reusable packaging composed of eco-friendly recycled paper. It is Samsung's commitment to achieving carbon-neutral of the earth and environment.



[Learn More](#)



## KOREA STAR AWARDS 2022

This award is for the contribution to the development of eco-friendly packaging in Korea. The ultrasound system V7 has won the KAPPE PRIZE of the Korea Star Awards.

## SAMSUNG MEDISON CO., LTD.

© 2022 Samsung Medison All Rights Reserved.

Samsung Medison reserves the right to modify the design, packaging, specifications, and features shown herein, without prior notice or obligation.

CE 0123

CT-V7 V1.00-GI-JWP-220527-EN