



mikron

SPINAL
CATALOG



A photograph of a modern, multi-story office building with the 'mikron' logo on its facade. The building has a light-colored exterior and several windows. The image is partially framed by a thick orange border.

COMPANY PROFILE

Mikron Makina Industry and Trade Limited Company were founded in 1980 then registered in 1994 as manufacturing mainly machining in component Defense, Aerospace, and Medical Industries. Since 2006, Mikron is a high-quality and affordable medical devices company.

Experts in researches, designing, improving, and commercializing Spine and Orthopedic Implants with instruments. Our Continuous investment in developments for our products allows us to meet the ever-changing needs of customers. Mikron is managed and structured to achieve reliable and effective results, even to the most challenging customer requirements.

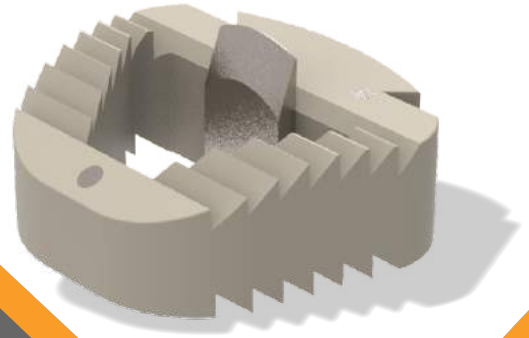
We believe this forms the foundation for the complementary beneficial, long-term partnerships and will ensure that we reach our goal of adding value to our clients.

We aim to price our solutions and services competitively and deliver products timeously to our customers. Mikron fulfills all the requirements of TS EN ISO 13485 and CE certificates at every stage of production.



AGENA-X

Cervical Cage With Blade



Features

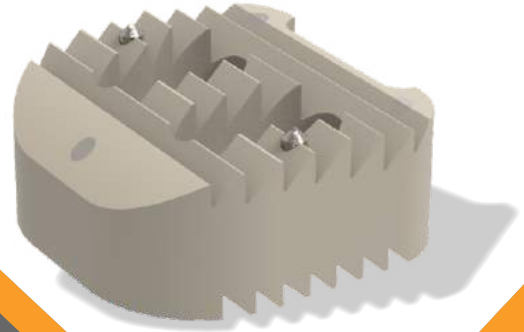
- Agena-X is manufactured by using PEEK and Titanium, which is compatible with MRI and CT and which does not result in permanent lesions.
- Blades for a more reliable holding between the endplates.
- Anterior cervical plate may not required for supplemental fixation

Code	Height	Length	Width
MCPCB41214	4	12	14
MCPCB41216	4	12	16
MCPCB41414	4	14	14
MCPCB51214	5	12	14
MCPCB51216	5	12	16
MCPCB51414	5	14	14
MCPCB61214	6	12	14
MCPCB61216	6	12	16
MCPCB61414	6	14	14
MCPCB71214	7	12	14
MCPCB71216	7	12	16
MCPCB71414	7	14	14
MCPCB81214	8	12	14
MCPCB81216	8	12	16
MCPCB81414	8	14	14



AGENA

Cervical Cage



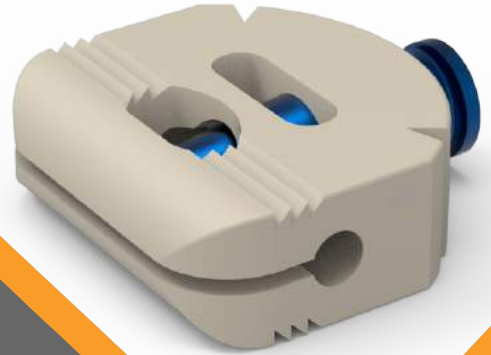
Features

- Agena is manufactured by using PEEK material, which is compatible with MRI and CT and which does not result in permanent lesions.
- Easy insert and fit anatomic structure.
- Tantalum marker.
- Strong fixation with threaded surface and two titanium pins.

Code	Height	Length	Width
MSFX-CPC041214	4	12	14
MSFX-CPC041216	4	12	16
MSFX-CPC041414	4	14	14
MSFX-CPC051214	5	12	14
MSFX-CPC051216	5	12	16
MSFX-CPC051414	5	14	14
MSFX-CPC061214	6	12	14
MSFX-CPC061216	6	12	16
MSFX-CPC061414	6	14	14
MSFX-CPC071214	7	12	14
MSFX-CPC071216	7	12	16
MSFX-CPC071414	7	14	14
MSFX-CPC081214	8	12	14
MSFX-CPC081216	8	12	16
MSFX-CPC081414	8	14	14



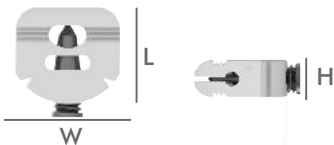
AGENA-C Cervical Expandable Cage



Features

- Agena-C is manufactured by using PEEK material and expanding mechanism: Ti6Al4V- Eli alloy, which is compatible with MRI and CT and which does not result in permanent lesions.
- Titanium pins together with titanium expanding mechanism let us identify the actual cage position.

Code	Height	Length	Width
MSFXECPC125	5	12	14
MSFXECPC126	6	12	14
MSFXECPC127	7	12	14
MSFXECPC128	8	12	14



SIRIUS

Cervical Disc Prosthesis



Features

- Manufactured from Ti6Al4V-ELI material, which is compatible with MRI and does not allow any lesional problems.
- Superior and inferior surfaces of a toothed structure provides retention, so the prosthesis can be placed firmly in the upper and lower parts of the end plates.
- The surface provides safety with the fixation into superior and inferior vertabrae. (\pm) 10° extension/flexion and lateral bending, and (\pm) 8° rotation of the disc can be fixed/provided by a single tool.

Code	Height	Length	Width
MSFX-CD12-04	4	12	14
MSFX-CD12-05	5	12	14
MSFX-CD12-06	6	12	14
MSFX-CD12-07	7	12	14
MSFX-CD12-08	8	12	14
MSFX-CD12-09	9	12	14
MSFX-CD14-04	4	14	14
MSFX-CD14-05	5	14	14
MSFX-CD14-06	6	14	14
MSFX-CD14-07	7	14	14
MSFX-CD14-08	8	14	14
MSFX-CD14-09	9	14	14
MSFX-CD16-05	5	14	16
MSFX-CD16-06	6	14	16
MSFX-CD16-07	7	14	16
MSFX-CD16-08	8	14	16
MSFX-CD16-09	9	14	16



MIRACH Cervical Plate



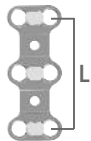
Features

- The locking system that secures screws for one-step locking
- The plate has a low profile and smooth surface designed to help minimize irritation.
- Simple surgical technique

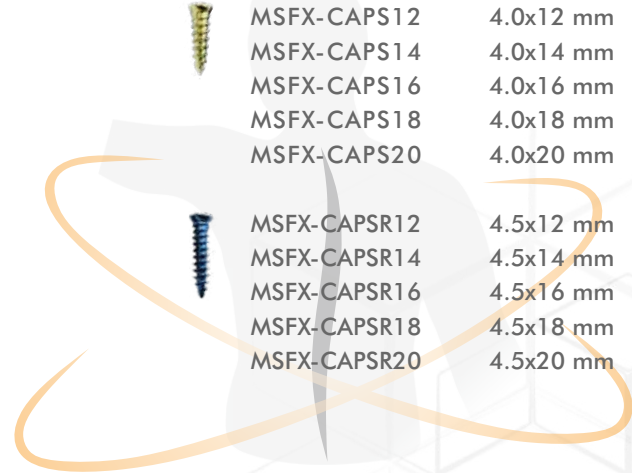
Cervical Plate



Code	Size
MSFX-CAP17	17
MSFX-CAP20	20
MSFX-CAP23	23
MSFX-CAP25	25
MSFX-CAP27	27
MSFX-CAP30	30
MSFX-CAP33	33
MSFX-CAP36	36
MSFX-CAP40	40
MSFX-CAP45	45
MSFX-CAP50	50
MSFX-CAP55	55
MSFX-CAP60	60
MSFX-CAP65	65
MSFX-CAP70	70
MSFX-CAP75	75
MSFX-CAP80	80
MSFX-CAP85	85
MSFX-CAP90	90



Cervical Plate Screws



Code	Size
MSFX-CAPS12	4.0x12 mm
MSFX-CAPS14	4.0x14 mm
MSFX-CAPS16	4.0x16 mm
MSFX-CAPS18	4.0x18 mm
MSFX-CAPS20	4.0x20 mm
MSFX-CAPSR12	4.5x12 mm
MSFX-CAPSR14	4.5x14 mm
MSFX-CAPSR16	4.5x16 mm
MSFX-CAPSR18	4.5x18 mm
MSFX-CAPSR20	4.5x20 mm

REGULUS-C

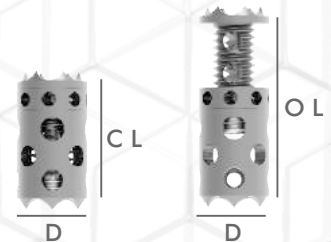
Corpectomy Cage



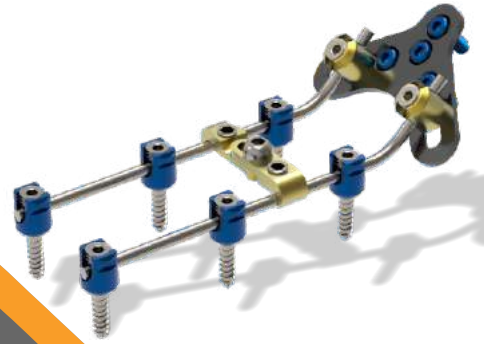
Features

- Full contact with angled surface
- Teeth on the surface, minimizing the risk of expulsion
- Angled inferior and superior area allow a complete contact with vertebral surface and composed by one piece.
- With an efficient grafting space, the system allows applying graft before distraction and provides a one stage locking mechanism.

Code	Diameter	Closed Length	Open Length	Angled
MCTC101013	10	10	13	
MCTC101317	10	13	17	
MCTC101625	10	16	25	
MCTC121013	12	10	13	
MCTC121317	12	13	17	
MCTC121625	12	16	25	
MCTC122440	12	24	40	
MCTC123965	12	39	65	
MCTC141013	14	10	13	
MCTC141317	14	13	17	
MCTC141625	14	16	25	
MCTC142440	14	24	40	
MCTC143965	14	39	65	
MCTC161013	16	10	13	
MCTC161317	16	13	17	
MCTC161625	16	16	25	
MCTC162440	16	24	40	
MCTC163965	16	39	65	
MCTC201013	20	10	13	
MCTC201317	20	13	17	
MCTC201625	20	16	25	
MCTC1216256	12	16	25	6°
MCTC1224406	12	24	40	6°
MCTC1239656	12	39	65	6°
MCTC1416256	14	16	25	6°
MCTC1424406	14	24	40	6°
MCTC1439656	14	39	65	6°



OMICRON Cervical Spinal System



Features

- Self-tapping flute centers screw for easy insertion
- Low profile screw head
- 3 diameters with cancellous profile (3.5 mm & 4.0 mm and 4.5 mm Rescue Screw)
3.5 mm diameter rod
- Multiple screw, hook, rod, connector and plate options to better match patient anatomy

Posterior Cervical Polyaxial Screw

Code	Size
MSFX-PPPS3510	3.5x10 mm
MSFX-PPPS3512	3.5x12 mm
MSFX-PPPS3514	3.5x14 mm
MSFX-PPPS3516	3.5x16 mm
MSFX-PPPS3518	3.5x18 mm
MSFX-PPPS3520	3.5x20 mm
MSFX-PPPS3522	3.5x22 mm
MSFX-PPPS3524	3.5x24 mm
MSFX-PPPS3526	3.5x26 mm
MSFX-PPPS3528	3.5x28 mm
MSFX-PPPS3530	3.5x30 mm
MSFX-PPPS3532	3.5x32 mm
MSFX-PPPS4010	4.0x10 mm
MSFX-PPPS4012	4.0x12 mm
MSFX-PPPS4014	4.0x14 mm
MSFX-PPPS4016	4.0x16 mm
MSFX-PPPS4018	4.0x18 mm
MSFX-PPPS4020	4.0x20 mm
MSFX-PPPS4022	4.0x22 mm
MSFX-PPPS4024	4.0x24 mm
MSFX-PPPS4026	4.0x26 mm
MSFX-PPPS4028	4.0x28 mm
MSFX-PPPS4030	4.0x30 mm
MSFX-PPPS4032	4.0x32 mm
MSFX-PPPS4510	4.5x10 mm
MSFX-PPPS4512	4.5x12 mm
MSFX-PPPS4514	4.5x14 mm
MSFX-PPPS4516	4.5x16 mm
MSFX-PPPS4518	4.5x18 mm
MSFX-PPPS4520	4.5x20 mm
MSFX-PPPS4522	4.5x22 mm
MSFX-PPPS4524	4.5x24 mm
MSFX-PPPS4526	4.5x26 mm
MSFX-PPPS4528	4.5x28 mm
MSFX-PPPS4530	4.5x30 mm
MSFX-PPPS4532	4.5x32 mm

Occipital Plate

Code	Size
MSFX-CPOPL	L
MSFX-CPOP M	M
MSFX-CPOPS	S



Transverse Connector

Code	Size
MSFX-TL130	30 mm
MSFX-TL135	35 mm
MSFX-TL140	40 mm
MSFX-TL145	45 mm
MSFX-TL150	50 mm
MSFX-TL155	55 mm
MSFX-TL160	60 mm



Cervical Hook

Code	Size
MSFX-PCHL7	4.5X7 mm
MSFX-PCHM6	4.5X6 mm
MSFX-PCHS5	4.5X5 mm



Cervical Rod

Code	Size
MSFX-SR1304	3.5x40 mm
MSFX-SR1308	3.5x80 mm
MSFX-SR1312	3.5x120 mm
MSFX-SR1320	3.5x200 mm

Occipital Plate Screw

Code	Size
MSFX-CPOSS4	4.0x4 mm
MSFX-CPOSS5	4.0x5 mm
MSFX-CPOSS6	4.0x6 mm
MSFX-CPOSL4	4.5x4 mm
MSFX-CPOSL5	4.5x5 mm
MSFX-CPOSL6	4.5x6 mm



Lateral Connector

Code	Size
MSFX-LCNT12	10 mm
MSFX-LCNT18	18 mm



Domino-Connector

Code
MSFX-SECN01
MSFX-SDCN02



PROCYON

Spinal System 6.0



Features

- Easy Lock System
- Cylindrical feature Self-Tapping
- 57 degree with polyaxial screws
- Implantable pedicle screws as a Monoaxial, Polyaxial Cannulated screws pre-bent rods, rod types, hooks in different sizes, easy to use hand tools compatible with implants
- More reliable tightening with the torx design of setscrew. Reverse angled setscrew thread design.

Polyaxial Screw



Code	Size	Code	Size	Code	Size
MSFX-PAS3525	3.5x25 mm	MSFX-PAS5535	5.5x35 mm	MSFX-PAS7540	7.5x40 mm
MSFX-PAS3530	3.5x30 mm	MSFX-PAS5540	5.5x40 mm	MSFX-PAS7545	7.5x45 mm
MSFX-PAS3535	3.5x35 mm	MSFX-PAS5545	5.5x45 mm	MSFX-PAS7550	7.5x50 mm
MSFX-PAS3540	3.5x40 mm	MSFX-PAS5550	5.5x50 mm	MSFX-PAS7555	7.5x55 mm
MSFX-PAS3545	3.5x45 mm	MSFX-PAS5555	5.5x55 mm	MSFX-PAS7560	7.5x60 mm
MSFX-PAS4020	4.0x20 mm	MSFX-PAS5560	5.5x60 mm	MSFX-PAS8030	8.0x30 mm
MSFX-PAS4025	4.0x25 mm	MSFX-PAS6035	6.0x35 mm	MSFX-PAS8035	8.0x35 mm
MSFX-PAS4030	4.0x30 mm	MSFX-PAS6040	6.0x40 mm	MSFX-PAS8040	8.0x40 mm
MSFX-PAS4035	4.0x35 mm	MSFX-PAS6045	6.0x45 mm	MSFX-PAS8045	8.0x45 mm
MSFX-PAS4040	4.0x40 mm	MSFX-PAS6050	6.0x50 mm	MSFX-PAS8050	8.0x50 mm
MSFX-PAS4045	4.0x45 mm	MSFX-PAS6055	6.0x55 mm	MSFX-PAS8055	8.0x55 mm
MSFX-PAS4520	4.5x20 mm	MSFX-PAS6060	6.0x60 mm	MSFX-PAS8060	8.0x60 mm
MSFX-PAS4525	4.5x25 mm	MSFX-PAS6530	6.5x30 mm	MSFX-PAS8070	8.0x70 mm
MSFX-PAS4530	4.5x30 mm	MSFX-PAS6535	6.5x35 mm	MSFX-PAS8080	8.0x80 mm
MSFX-PAS4535	4.5x35 mm	MSFX-PAS6540	6.5x40 mm	MSFX-PAS8090	8.0x90 mm
MSFX-PAS4540	4.5x40 mm	MSFX-PAS6545	6.5x45 mm	MSFX-PAS8100	8.0x100 mm
MSFX-PAS4545	4.5x45 mm	MSFX-PAS6550	6.5x50 mm	MSFX-PAS8530	8.5x30 mm
MSFX-PAS5030	5.0x30 mm	MSFX-PAS6555	6.5x55 mm	MSFX-PAS8535	8.5x35 mm
MSFX-PAS5035	5.0x35 mm	MSFX-PAS6560	6.5x60 mm	MSFX-PAS8540	8.5x40 mm
MSFX-PAS5040	5.0x40 mm	MSFX-PAS7035	7.0x35 mm	MSFX-PAS8545	8.5x45 mm
MSFX-PAS5045	5.0x45 mm	MSFX-PAS7040	7.0x40 mm	MSFX-PAS8550	8.5x50 mm
MSFX-PAS5050	5.0x50 mm	MSFX-PAS7045	7.0x45 mm	MSFX-PAS8555	8.5x55 mm
MSFX-PAS5055	5.0x55 mm	MSFX-PAS7050	7.0x50 mm	MSFX-PAS8560	8.5x60 mm
MSFX-PAS5060	5.0x60 mm	MSFX-PAS7055	7.0x55 mm	MSFX-PAS8570	8.5x70 mm
MSFX-PAS5520	5.5x20 mm	MSFX-PAS7060	7.0x60 mm	MSFX-PAS8580	8.5x80 mm
MSFX-PAS5525	5.5x25 mm	MSFX-PAS7530	7.5x30 mm	MSFX-PAS8590	8.5x90 mm
MSFX-PAS5530	5.5x30 mm	MSFX-PAS7535	7.5x35 mm	MSFX-PAS85100	8.5x100 mm

Monoaxial Screw



Code	Size	Code	Size
MSFX-MAS3525	3.5x25 mm	MSFX-MAS6035	6.0x35 mm
MSFX-MAS3530	3.5x30 mm	MSFX-MAS6040	6.0x40 mm
MSFX-MAS3535	3.5x35 mm	MSFX-MAS6045	6.0x45 mm
MSFX-MAS3540	3.5x40 mm	MSFX-MAS6050	6.0x50 mm
MSFX-MAS3545	3.5x45 mm	MSFX-MAS6055	6.0x55 mm
MSFX-MAS4025	4.0x25 mm	MSFX-MAS6530	6.5x30 mm
MSFX-MAS4030	4.0x30 mm	MSFX-MAS6535	6.5x35 mm
MSFX-MAS4035	4.0x35 mm	MSFX-MAS6540	6.5x40 mm
MSFX-MAS4040	4.0x40 mm	MSFX-MAS6545	6.5x45 mm
MSFX-MAS4045	4.0x45 mm	MSFX-MAS6550	6.5x50 mm
MSFX-MAS4525	4.5x25 mm	MSFX-MAS6555	6.5x55 mm
MSFX-MAS4530	4.5x30 mm	MSFX-MAS7035	7.0x35 mm
MSFX-MAS4535	4.5x35 mm	MSFX-MAS7040	7.0x40 mm
MSFX-MAS4540	4.5x40 mm	MSFX-MAS7045	7.0x45 mm
MSFX-MAS4545	4.5x45 mm	MSFX-MAS7050	7.0x50 mm
MSFX-MAS5030	5.0x30 mm	MSFX-MAS7055	7.0x55 mm
MSFX-MAS5035	5.0x35 mm	MSFX-MAS7535	7.5x35 mm
MSFX-MAS5040	5.0x40 mm	MSFX-MAS7540	7.5x40 mm
MSFX-MAS5045	5.0x45 mm	MSFX-MAS7545	7.5x45 mm
MSFX-MAS5050	5.0x50 mm	MSFX-MAS7550	7.5x50 mm
MSFX-MAS5530	5.5x30 mm	MSFX-MAS7555	7.5x55 mm
MSFX-MAS5535	5.5x35 mm	MSFX-MAS8035	8.0x35 mm
MSFX-MAS5540	5.5x40 mm	MSFX-MAS8040	8.0x40 mm
MSFX-MAS5545	5.5x45 mm	MSFX-MAS8045	8.0x45 mm
MSFX-MAS5550	5.5x50 mm	MSFX-MAS8050	8.0x50 mm
MSFX-MAS5555	5.5x55 mm	MSFX-MAS8055	8.0x55 mm

Monoaxial Spondylolisthesis Screw



Code	Size
MSFX-MRS5535	5.5x35 mm
MSFX-MRS5540	5.5x40 mm
MSFX-MRS5545	5.5x45 mm
MSFX-MRS5550	5.5x50 mm
MSFX-MRS6035	6.0x35 mm
MSFX-MRS6040	6.0x40 mm
MSFX-MRS6045	6.0x45 mm
MSFX-MRS6050	6.0x50 mm
MSFX-MRS6535	6.5x35 mm
MSFX-MRS6540	6.5x40 mm
MSFX-MRS6545	6.5x45 mm
MSFX-MRS6550	6.5x50 mm
MSFX-MRS7035	7.0x30 mm
MSFX-MRS7040	7.0x40 mm
MSFX-MRS7045	7.0x45 mm
MSFX-MRS7050	7.0x50 mm
MSFX-MRS7055	7.0x55 mm
MSFX-MRS7540	7.5x40 mm
MSFX-MRS7545	7.5x45 mm
MSFX-MRS7550	7.5x50 mm
MSFX-MRS7555	7.5x55 mm

Polyaxial Spondylolisthesis Screw



Code	Size
MSFX-PRS5530	5.5x30 mm
MSFX-PRS5535	5.5x35 mm
MSFX-PRS5540	5.5x45 mm
MSFX-PRS5545	5.5x45 mm
MSFX-PRS5550	5.5x50 mm
MSFX-PRS5555	5.5x55 mm
MSFX-PRS6035	6.0x35 mm
MSFX-PRS6040	6.0x40 mm
MSFX-PRS6045	6.0x45 mm
MSFX-PRS6050	6.0x50 mm
MSFX-PRS6530	6.5x30 mm
MSFX-PRS6535	6.5x35 mm
MSFX-PRS6540	6.5x40 mm
MSFX-PRS6545	6.5x45 mm
MSFX-PRS6550	6.5x50 mm
MSFX-PRS6555	6.5x55 mm
MSFX-PRS7035	7.0x35 mm
MSFX-PRS7040	7.0x40 mm
MSFX-PRS7045	7.0x45 mm
MSFX-PRS7050	7.0x50 mm
MSFX-PRS7055	7.0x55 mm
MSFX-PRS7535	7.5x35 mm
MSFX-PRS7540	7.5x40 mm
MSFX-PRS7545	7.5x45 mm
MSFX-PRS7550	7.5x50 mm
MSFX-PRS7555	7.5x55 mm

Polyaxial Cannulated And Fenestrated Screw



Code	Size	Code	Size
MSFX-CPS5530	4.5x30 mm	MSFX-CPS6550	6.5x50 mm
MSFX-CPS4535	4.5x35 mm	MSFX-CPS6555	6.5x55 mm
MSFX-CPS4540	4.5x40 mm	MSFX-CPS7030	7.0x30 mm
MSFX-CPS4545	4.5x45 mm	MSFX-CPS7035	7.0x35 mm
MSFX-CPS4550	4.5x50 mm	MSFX-CPS7040	7.0x40 mm
MSFX-CPS4555	4.5x55 mm	MSFX-CPS7045	7.0x45 mm
MSFX-CPS5035	5.0x35 mm	MSFX-CPS7050	7.0x50 mm
MSFX-CPS5040	5.0x40 mm	MSFX-CPS7055	7.0x55 mm
MSFX-CPS5045	5.0x45 mm	MSFX-CPS7530	7.5x30 mm
MSFX-CPS5050	5.0x50 mm	MSFX-CPS7535	7.5x35 mm
MSFX-CPS5055	5.0x55 mm	MSFX-CPS7540	7.5x40 mm
MSFX-CPS5530	5.5x30 mm	MSFX-CPS7545	7.5x45 mm
MSFX-CPS5535	5.5x35 mm	MSFX-CPS7550	7.5x50 mm
MSFX-CPS5540	5.5x40 mm	MSFX-CPS7555	7.5x55 mm
MSFX-CPS5545	5.5x45 mm	MSFX-CPS8035	8.0x35 mm
MSFX-CPS5550	5.5x50 mm	MSFX-CPS8040	8.0x40 mm
MSFX-CPS5555	5.5x55 mm	MSFX-CPS8045	8.0x45 mm
MSFX-CPS6035	6.0x35 mm	MSFX-CPS8050	8.0x50 mm
MSFX-CPS6040	6.0x40 mm	MSFX-CPS8055	8.0x55 mm
MSFX-CPS6045	6.0x45 mm		
MSFX-CPS6050	6.0x50 mm		
MSFX-CPS6055	6.0x55 mm		
MSFX-CPS6530	6.5x30 mm		
MSFX-CPS6535	6.5x35 mm		
MSFX-CPS6540	6.5x40 mm		
MSFX-CPS6545	6.5x45 mm		

Monoaxial Cannulated And Fenestrated Screw



Code	Size
MSFX-CMS5530	5.5x30 mm
MSFX-CMS5535	5.5x35 mm
MSFX-CMS5540	5.5x40 mm
MSFX-CMS5545	5.5x45 mm
MSFX-CMS5550	5.5x50 mm
MSFX-CMS5555	5.5x55 mm
MSFX-CMS6530	6.5x30 mm
MSFX-CMS6535	6.5x35 mm
MSFX-CMS6540	6.5x40 mm
MSFX-CMS6545	6.5x45 mm
MSFX-CMS6550	6.5x50 mm
MSFX-CMS6555	6.5x55 mm
MSFX-CMS7530	7.5x30 mm
MSFX-CMS7535	7.5x35 mm
MSFX-CMS7540	7.5x40 mm
MSFX-CMS7545	7.5x45 mm
MSFX-CMS7550	7.5x50 mm
MSFX-CMS7555	7.5x55 mm



Rod

Code	Size	Code	Size
MSFX-SR1604	6.0x40 mm	MSFX-SR1622	6.0x220 mm
MSFX-SR1605	6.0x50 mm	MSFX-SR1623	6.0x230 mm
MSFX-SR1606	6.0x60 mm	MSFX-SR1624	6.0x240 mm
MSFX-SR1607	6.0x70 mm	MSFX-SR1625	6.0x250 mm
MSFX-SR1608	6.0x80 mm	MSFX-SR1626	6.0x260 mm
MSFX-SR1609	6.0x90 mm	MSFX-SR1627	6.0x270 mm
MSFX-SR1610	6.0x100 mm	MSFX-SR1628	6.0x280 mm
MSFX-SR1611	6.0x110 mm	MSFX-SR1629	6.0x290 mm
MSFX-SR1612	6.0x120 mm	MSFX-SR1630	6.0x300 mm
MSFX-SR1613	6.0x130 mm	MSFX-SR1631	6.0x310 mm
MSFX-SR1614	6.0x140 mm	MSFX-SR1632	6.0x320 mm
MSFX-SR1615	6.0x150 mm	MSFX-SR1640	6.0x400 mm
MSFX-SR1616	6.0x160 mm	MSFX-SR1648	6.0x480 mm
MSFX-SR1617	6.0x170 mm	MSFX-SR1650	6.0x500 mm
MSFX-SR1618	6.0x180 mm	MSFX-SR1660	6.0x600 mm
MSFX-SR1619	6.0x190 mm		
MSFX-SR1620	6.0x200 mm		
MSFX-SR1621	6.0x210 mm		

POLAR

Spinal System 5.5/6.0



Features

- The Polar 5.5 Spinal System is low profile system.
- The screws feature a dual - lead thread design with self - tapping cuts, expediting advancement and reducing surgeon fatigue.
- Screws available in 4.5mm. 5.5mm. 6.5mm. 7.5mm and 8.5mm diameters and multiple lengths
- Dual - lead thread pattern for faster insertation and increased pull out strength.
- Polyaxial Range of the motion for ease of use intraoperatively
- Ability to accept diameter 5.5 and 6.0 mm rod.

Polar Polyaxial Screw

Polar Polyaxial Spondylolisthesis Screw



Code	Size	Code	Size
MSFX-PPPS3525	3.5x25 mm	MSFX-PPPS6530	6.5x30 mm
MSFX-PPPS3530	3.5x30 mm	MSFX-PPPS6535	6.5x35 mm
MSFX-PPPS3535	3.5x35 mm	MSFX-PPPS6540	6.5x40 mm
MSFX-PPPS3540	3.5x40 mm	MSFX-PPPS6545	6.5x45 mm
MSFX-PPPS3545	3.5x45 mm	MSFX-PPPS6550	6.5x50 mm
MSFX-PPPS4520	4.5x20 mm	MSFX-PPPS6555	6.5x55 mm
MSFX-PPPS4525	4.5x25 mm	MSFX-PPPS7035	7.0x35 mm
MSFX-PPPS4530	4.5x30 mm	MSFX-PPPS7040	7.0x40 mm
MSFX-PPPS4535	4.5x35 mm	MSFX-PPPS7045	7.0x45 mm
MSFX-PPPS4540	4.5x40 mm	MSFX-PPPS7050	7.0x50 mm
MSFX-PPPS4545	4.5x45 mm	MSFX-PPPS7055	7.0x55 mm
MSFX-PPPS5030	5.0x30 mm	MSFX-PPPS7530	7.5x30 mm
MSFX-PPPS5035	5.0x35 mm	MSFX-PPPS7535	7.5x35 mm
MSFX-PPPS5040	5.0x40 mm	MSFX-PPPS7540	7.5x40 mm
MSFX-PPPS5045	5.0x45 mm	MSFX-PPPS7545	7.5x45 mm
MSFX-PPPS5050	5.0x50 mm	MSFX-PPPS7550	7.5x50 mm
MSFX-PPPS5520	5.5x20 mm	MSFX-PPPS7555	7.5x55 mm
MSFX-PPPS5525	5.5x25 mm	MSFX-PPPS8030	8.0x30 mm
MSFX-PPPS5530	5.5x30 mm	MSFX-PPPS8035	8.0x35 mm
MSFX-PPPS5535	5.5x35 mm	MSFX-PPPS8040	8.0x40 mm
MSFX-PPPS5540	5.5x40 mm	MSFX-PPPS8045	8.0x45 mm
MSFX-PPPS5545	5.5x45 mm	MSFX-PPPS8050	8.0x50 mm
MSFX-PPPS5550	5.5x50 mm	MSFX-PPPS8055	8.0x55 mm
MSFX-PPPS5555	5.5x55 mm	MSFX-PPPS8055	8.0x60 mm
MSFX-PPPS6035	6.0x35 mm	MSFX-PPPS8070	8.0x70 mm
MSFX-PPPS6040	6.0x40 mm	MSFX-PPPS8080	8.0x80 mm
MSFX-PPPS6045	6.0x45 mm	MSFX-PPPS8090	8.0x90 mm
MSFX-PPPS6050	6.0x50 mm	MSFX-PPPS80100	8.0x100 mm
MSFX-PPPS6055	6.0x55 mm		



Code	Size
MSFX-PPRPS5530	5.5x30 mm
MSFX-PPRPS5535	5.5x35 mm
MSFX-PPRPS5540	5.5x40 mm
MSFX-PPRPS5545	5.5x45 mm
MSFX-PPRPS5550	5.5x50 mm
MSFX-PPRPS5555	5.5x55 mm
MSFX-PPRPS6035	6.0x35 mm
MSFX-PPRPS6040	6.0x40 mm
MSFX-PPRPS6045	6.0x45 mm
MSFX-PPRPS6050	6.0x50 mm
MSFX-PPRPS6535	6.5x35 mm
MSFX-PPRPS6540	6.5x40 mm
MSFX-PPRPS6545	6.5x45 mm
MSFX-PPRPS6550	6.5x50 mm
MSFX-PPRPS6555	6.5x55 mm
MSFX-PPRPS7035	7.0x35 mm
MSFX-PPRPS7040	7.0x40 mm
MSFX-PPRPS7045	7.0x45 mm
MSFX-PPRPS7050	7.0x50 mm
MSFX-PPRPS7055	7.0x55 mm
MSFX-PPRPS7535	7.5x35 mm
MSFX-PPRPS7540	7.5x40 mm
MSFX-PPRPS7545	7.5x45 mm
MSFX-PPRPS7550	7.5x50 mm
MSFX-PPRPS7555	7.5x55 mm

Polar Monoaxial Screw




Code	Size	Code	Size
MSFX-PPMAS3525	3.5x25 mm	MSFX-PPMAS6040	6.0x40 mm
MSFX-PPMAS3530	3.5x30 mm	MSFX-PPMAS6045	6.0x45 mm
MSFX-PPMAS3535	3.5x35 mm	MSFX-PPMAS6050	6.0x50 mm
MSFX-PPMAS3540	3.5x40 mm	MSFX-PPMAS6055	6.0x55 mm
MSFX-PPMAS3545	3.5x45 mm	MSFX-PPMAS6530	6.5x30 mm
MSFX-PPMAS4025	4.0x25 mm	MSFX-PPMAS6535	6.5x35 mm
MSFX-PPMAS4030	4.0x30 mm	MSFX-PPMAS6540	6.5x40 mm
MSFX-PPMAS4035	4.0x35 mm	MSFX-PPMAS6545	6.5x45 mm
MSFX-PPMAS4040	4.0x40 mm	MSFX-PPMAS6550	6.5x50 mm
MSFX-PPMAS4525	4.5x25 mm	MSFX-PPMAS6555	6.5x55 mm
MSFX-PPMAS4530	4.5x30 mm	MSFX-PPMAS7035	7.0x35 mm
MSFX-PPMAS4535	4.5x35 mm	MSFX-PPMAS7040	7.0x40 mm
MSFX-PPMAS4540	4.5x40 mm	MSFX-PPMAS7045	7.0x45 mm
MSFX-PPMAS4545	4.5x45 mm	MSFX-PPMAS7050	7.0x50 mm
MSFX-PPMAS5030	5.0x30 mm	MSFX-PPMAS7055	7.0x55 mm
MSFX-PPMAS5035	5.0x35 mm	MSFX-PPMAS7535	7.5x35 mm
MSFX-PPMAS5040	5.0x40 mm	MSFX-PPMAS7540	7.5x40 mm
MSFX-PPMAS5045	5.0x45 mm	MSFX-PPMAS7545	7.5x45 mm
MSFX-PPMAS5050	5.0x50 mm	MSFX-PPMAS7550	7.5x50 mm
MSFX-PPMAS5530	5.5x30 mm	MSFX-PPMAS7555	7.5x55 mm
MSFX-PPMAS5535	5.5x35 mm	MSFX-PPMAS8035	8.0x35 mm
MSFX-PPMAS5540	5.5x40 mm	MSFX-PPMAS8040	8.0x40 mm
MSFX-PPMAS5545	5.5x45 mm	MSFX-PPMAS8045	8.0x45 mm
MSFX-PPMAS5550	5.5x50 mm	MSFX-PPMAS8050	8.0x50 mm
MSFX-PPMAS5555	5.5x55 mm	MSFX-PPMAS8055	8.0x55 mm
MSFX-PPMAS6035	6.0x35 mm		

Polar Monoaxial Spondylolisthesis Screw



Code	Size
MSFX-PPMRS5535	5.5x35 mm
MSFX-PPMRS5540	5.5x40 mm
MSFX-PPMRS5550	5.5x50 mm
MSFX-PPMRS6035	6.0x35 mm
MSFX-PPMRS6050	6.0x50 mm
MSFX-PPMRS6535	6.5x35 mm
MSFX-PPMRS6545	6.5x45 mm
MSFX-PPMRS6550	6.5x50 mm
MSFX-PPMRS7040	7.0x40 mm
MSFX-PPMRS7045	7.0x45 mm
MSFX-PPMRS7050	7.0x50 mm
MSFX-PPMRS7055	7.0x55 mm
MSFX-PPMRS7540	7.5x40 mm
MSFX-PPMRS7550	7.5x50 mm
MSFX-PPMRS7555	7.5x55 mm

Polar Polyaxial Cannulated And Fenestrated Screw

Code	Size
 MSFX-PPCPS5530	5.5x30 mm
MSFX-PPCPS5535	5.5x35 mm
MSFX-PPCPS5540	5.5x40 mm
MSFX-PPCPS5545	5.5x45 mm
MSFX-PPCPS5550	5.5x50 mm
MSFX-PPCPS5555	5.5x55 mm
MSFX-PPCPS6530	6.5x30 mm
MSFX-PPCPS6535	6.5x35 mm
MSFX-PPCPS6540	6.5x40 mm
MSFX-PPCPS6545	6.5x45 mm
MSFX-PPCPS6550	6.5x50 mm
MSFX-PPCPS6555	6.5x55 mm
MSFX-PPCPS7530	7.5x30 mm
MSFX-PPCPS7535	7.5x35 mm
MSFX-PPCPS7540	7.5x40 mm
MSFX-PPCPS7545	7.5x45 mm
MSFX-PPCPS7550	7.5x50 mm
MSFX-PPCPS7555	7.5x55 mm
MSFX-PPCPS8035	8.0x35 mm
MSFX-PPCPS8040	8.0x40 mm
MSFX-PPCPS8045	8.0x45 mm
MSFX-PPCPS8050	8.0x50 mm
MSFX-PPCPS8055	8.0x55 mm
MSFX-PPCPS8060	8.0x60 mm
MSFX-PPCPS8070	8.0x70 mm
MSFX-PPCPS8080	8.0x80 mm
MSFX-PPCPS8090	8.0x90 mm
MSFX-PPCPS80100	8.0x100 mm

Polar Monoaxial Cannulated And Fenestrated Screw

Code	Size
 MSFX-PPCMS5530	5.5x30 mm
MSFX-PPCMS5535	5.5x35 mm
MSFX-PPCMS5540	5.5x40 mm
MSFX-PPCMS5545	5.5x45 mm
MSFX-PPCMS5550	5.5x50 mm
MSFX-PPCMS5555	5.5x55 mm
MSFX-PPCMS6530	6.5x30 mm
MSFX-PPCMS6535	6.5x35 mm
MSFX-PPCMS6540	6.5x40 mm
MSFX-PPCMS6545	6.5x45 mm
MSFX-PPCMS6550	6.5x50 mm
MSFX-PPCMS6555	6.5x55 mm
MSFX-PPCMS7530	7.5x30 mm
MSFX-PPCMS7535	7.5x35 mm
MSFX-PPCMS7540	7.5x40 mm
MSFX-PPCMS7545	7.5x45 mm
MSFX-PPCMS7550	7.5x50 mm
MSFX-PPCMS7555	7.5x55 mm

Polar Polyaxial Quad Lead Screw



Code	Size	Code	Size
MSFX-PPMFS3525	3.5x25 mm	MSFX-PPMFS6055	6.0x55 mm
MSFX-PPMFS3530	3.5x30 mm	MSFX-PPMFS6530	6.5x30 mm
MSFX-PPMFS3535	3.5x35 mm	MSFX-PPMFS6535	6.5x35 mm
MSFX-PPMFS3540	3.5x40 mm	MSFX-PPMFS6540	6.5x40 mm
MSFX-PPMFS3545	3.5x45 mm	MSFX-PPMFS6545	6.5x45 mm
MSFX-PPMFS4520	4.5x20 mm	MSFX-PPMFS6550	6.5x50 mm
MSFX-PPMFS4525	4.5x25 mm	MSFX-PPMFS6555	6.5x55 mm
MSFX-PPMFS4530	4.5x30 mm	MSFX-PPMFS7035	7.0x35 mm
MSFX-PPMFS4535	4.5x35 mm	MSFX-PPMFS7040	7.0x40 mm
MSFX-PPMFS4540	4.5x40 mm	MSFX-PPMFS7045	7.0x45 mm
MSFX-PPMFS4545	4.5x45 mm	MSFX-PPMFS7050	7.0x50 mm
MSFX-PPMFS5030	5.0x30 mm	MSFX-PPMFS7055	7.0x55 mm
MSFX-PPMFS5035	5.0x35 mm	MSFX-PPMFS7530	7.5x30 mm
MSFX-PPMFS5040	5.0x40 mm	MSFX-PPMFS7535	7.5x35 mm
MSFX-PPMFS5045	5.0x45 mm	MSFX-PPMFS7540	7.5x40 mm
MSFX-PPMFS5050	5.0x50 mm	MSFX-PPMFS7545	7.5x45 mm
MSFX-PPMFS5520	5.5x20 mm	MSFX-PPMFS7550	7.5x50 mm
MSFX-PPMFS5525	5.5x25 mm	MSFX-PPMFS7555	7.5x55 mm
MSFX-PPMFS5530	5.5x30 mm	MSFX-PPMFS8030	8.0x30 mm
MSFX-PPMFS5535	5.5x35 mm	MSFX-PPMFS8035	8.0x35 mm
MSFX-PPMFS5540	5.5x40 mm	MSFX-PPMFS8040	8.0x40 mm
MSFX-PPMFS5545	5.5x45 mm	MSFX-PPMFS8045	8.0x45 mm
MSFX-PPMFS5550	5.5x50 mm	MSFX-PPMFS8050	8.0x50 mm
MSFX-PPMFS5555	5.5x55 mm	MSFX-PPMFS8055	8.0x55 mm
MSFX-PPMFS6035	6.0x35 mm	MSFX-PPMFS8070	8.0x70 mm
MSFX-PPMFS6040	6.0x40 mm	MSFX-PPMFS8080	8.0x80 mm
MSFX-PPMFS6045	6.0x45 mm	MSFX-PPMFS8090	8.0x90 mm
MSFX-PPMFS6050	6.0x50 mm	MSFX-PPMFS80100	8.0x100 mm

Polar Polyaxial Spondylolisthesis Quad Lead Screw



Code	Size
MSFX-PPMFRS5530	5.5x30 mm
MSFX-PPMFRS5540	5.5x40 mm
MSFX-PPMFRS5545	5.5x45 mm
MSFX-PPMFRS5550	5.5x50 mm
MSFX-PPMFRS5555	5.5x55 mm
MSFX-PPMFRS6035	6.0x35 mm
MSFX-PPMFRS6040	6.0x40 mm
MSFX-PPMFRS6045	6.0x45 mm
MSFX-PPMFRS6050	6.0x50 mm
MSFX-PPMFRS6540	6.5x40 mm
MSFX-PPMFRS6545	6.5x45 mm
MSFX-PPMFRS6550	6.5x50 mm
MSFX-PPMFRS6555	6.5x55 mm
MSFX-PPMFRS7035	7.0x35 mm
MSFX-PPMFRS7040	7.0x40 mm
MSFX-PPMFRS7045	7.0x45 mm
MSFX-PPMFRS7050	7.0x50 mm
MSFX-PPMFRS7055	7.0x55 mm
MSFX-PPMFRS7535	7.5x35 mm
MSFX-PPMFRS7540	7.5x40 mm
MSFX-PPMFRS7545	7.5x45 mm
MSFX-PPMFRS7550	7.5x50 mm
MSFX-PPMFRS7555	7.5x55 mm

Rod
Sacral Iliac Screw

Code	Size	Code	Size
MSFX-SR1504	5.5x40 mm	MSFX-SSS6035	6.0x35 mm
MSFX-SR1505	5.5x50 mm	MSFX-SSS6040	6.0x40 mm
MSFX-SR1506	5.5x60 mm	MSFX-SSS6045	6.0x45 mm
MSFX-SR1507	5.5x70 mm	MSFX-SSS6050	6.0x50 mm
MSFX-SR1508	5.5x80 mm	MSFX-SSS6055	6.0x55 mm
MSFX-SR1509	5.5x90 mm	MSFX-SSS7040	6.0x40 mm
MSFX-SR1510	5.5x100 mm	MSFX-SSS7045	6.0x45 mm
MSFX-SR1511	5.5x110 mm	MSFX-SSS7050	6.0x50 mm
MSFX-SR1512	5.5x120 mm	MSFX-SSS7055	6.0x55 mm
MSFX-SR1513	5.5x130 mm	MSFX-SSC15	15
MSFX-SR1514	5.5x140 mm	MSFX-SSC20	20
MSFX-SR1515	5.5x150 mm	MSFX-SOCNT	
MSFX-SR1516	5.5x160 mm		
MSFX-SR1517	5.5x170 mm		
MSFX-SR1518	5.5x180 mm		
MSFX-SR1519	5.5x190 mm		
MSFX-SR1520	5.5x200 mm		
MSFX-SR1521	5.5x210 mm		
MSFX-SR1522	5.5x220 mm		
MSFX-SR1523	5.5x230 mm		
MSFX-SR1524	5.5x240 mm		
MSFX-SR1525	5.5x250 mm		
MSFX-SR1526	5.5x260 mm		
MSFX-SR1527	5.5x270 mm		
MSFX-SR1528	5.5x280 mm		
MSFX-SR1529	5.5x290 mm		
MSFX-SR1530	5.5x300 mm		
MSFX-SR1531	5.5x310 mm		
MSFX-SR1532	5.5x320 mm		
MSFX-SR1540	5.5x400 mm		
MSFX-SR1548	5.5x480 mm		
MSFX-SR1560	5.5x500 mm		
MSFX-SR1550	5.5x600 mm		

Transverse Connector

Code	Size
MSFX-TLH	
MSFX-TLR140	40 mm
MSFX-TLR150	50mm
MSFX-TLR160	60 mm
MSFX-TLR170	70 mm
MSFX-TLR180	80 mm
MSFX-MHTR	



Multiaxial Transverse Connector

Code	Size
MSFX-MTL4060	40-60 mm
MSFX-MTL6080	60-80 mm



Lateral Connector

Code	Size
MSFX-LCNT15	15 mm
MSFX-LCNT20	20 mm
MSFX-LCNT25	25 mm
MSFX-LCNT30	30 mm



Connector

Code
MSFX-ECNT01
MSFX-ECNT02
MSFX-OCNT



Laminar Hooks

Code	Size
MSFX-LH0505	5x5 mm
MSFX-LH0507	5x7 mm
MSFX-LH0509	5x9 mm
MSFX-LH0706	7x6 mm
MSFX-LH0707	7x7 mm
MSFX-LH0709	7x9 mm
MSFX-LH0711	7x11 mm
MSFX-LHF0505	5x5 mm
MSFX-LHF0507	5x7 mm
MSFX-LHLA709	7x9 mm
MSFX-LHLA711	7x11 mm
MSFX-LHRA709	7x9 mm
MSFX-LHRA711	7x11 mm



Pedicular Hooks

Code	Size
MSFX-HT3L0507	5x7 mm
MSFX-HT3L0509	5x9 mm
MSFX-HT3L0511	5x11 mm
MSFX-HT3R0507	5x7 mm
MSFX-HT3R0509	5x9 mm
MSFX-HT3R0511	5x11 mm
MSFX-PH0805	8x5 mm
MSFX-PH0807	8x7 mm
MSFX-PH0809	8x9 mm
MSFX-PHF0505	5x5 mm
MSFX-PHF0507	5x7 mm



REGULUS-L

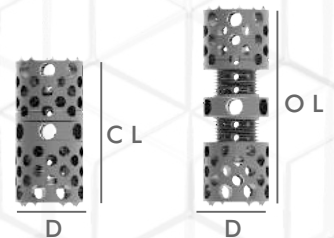
Corpectomy Cage



Features

- Ti-6Al-4V ELI Titanium alloy
- Anatomical design
- Efficient design providing wide grafting space
- Controlled in-situ expansion
- Easy instrumentation

Code	Diameter	Closed Length	Open Length	Angled
MVTCD202534	20	25	34	
MVTCD203244	20	32	44	
MVTCD204258	20	42	58	
MVTCD205684	20	56	84	
MVTCD242329	24	23	29	
MVTCD242840	24	28	40	
MVTCD243854	24	38	54	
MVTCD245276	24	52	76	
MVTCD2474114	24	74	114	
MVTCD283044	28	30	44	
MVTCD284258	28	42	58	
MVTCD285684	28	56	84	
MVTCD2882130	28	82	130	
MVTCD28100140	28	100	140	
MVTCA202534	20	25	34	6°
MVTCA203244	20	32	44	6°
MVTCA204258	20	42	58	6°
MVTCA205684	20	56	84	6°
MVTCA242329	24	23	29	6°
MVTCA242840	24	28	40	6°
MVTCA243854	24	38	54	6°
MVTCA245276	24	52	76	6°
MVTCA2474114	24	74	114	6°
MVTCA283044	28	30	44	6°
MVTCA284258	28	42	58	6°
MVTCA285684	28	56	84	6°
MVTCA2882130	28	82	130	6°
MVTCA28100140	28	100	140	6°



ESTELA

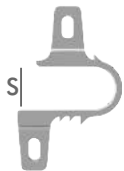
Interspinous Device



Features

- Simplicity of use
- Dynamic fixation and stabilisation.
- Reduces stresses at the facet joints
- Opens up the foramina
- Prevent upfolding ligamentum flavum

Code	Size
MSFX-08UDPL	08
MSFX-10UDPL	10
MSFX-12UDPL	12
MSFX-14UDPL	14
MSFX-16UDPL	16



TUREIS Tlif Cage



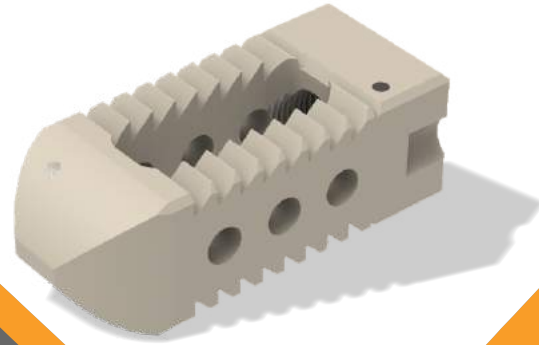
Features

- Bi-convex graft contour, with a 4° angle of lordosis, conforms easily to the concavity of the endplate
- Structure on the surface, minimizing the risk of expulsion
- Large contact area, minimizing the risk of subsidence
- Large graft area, maximizing the chances of a successful fusion
- Simple, ergonomic and intelligent instrumentation

Code	Height	Length	Width	Code	Height	Length	Width	Angled
MSFX-BC2407	7	24	10	MSFX-BCA2407	7	24	10	4°
MSFX-BC2408	8	24	10	MSFX-BCA2408	8	24	10	4°
MSFX-BC2409	9	24	10	MSFX-BCA2409	9	24	10	4°
MSFX-BC2410	10	24	10	MSFX-BCA2410	10	24	10	4°
MSFX-BC2411	11	24	10	MSFX-BCA2411	11	24	10	4°
MSFX-BC2412	12	24	10	MSFX-BCA2412	12	24	10	4°
MSFX-BC2413	13	24	10	MSFX-BCA2413	13	24	10	4°
MSFX-BC2807	7	28	10	MSFX-BCA2807	7	28	10	4°
MSFX-BC2808	8	28	10	MSFX-BCA2808	8	28	10	4°
MSFX-BC2809	9	28	10	MSFX-BCA2809	9	28	10	4°
MSFX-BC2810	10	28	10	MSFX-BCA2810	10	28	10	4°
MSFX-BC2811	11	28	10	MSFX-BCA2811	11	28	10	4°
MSFX-BC2812	12	28	10	MSFX-BCA2812	12	28	10	4°
MSFX-BC2813	13	28	10	MSFX-BCA2813	13	28	10	4°
MSFX-BC3207	7	32	10	MSFX-BCA3207	7	32	10	4°
MSFX-BC3208	8	32	10	MSFX-BCA3208	8	32	10	4°
MSFX-BC3209	9	32	10	MSFX-BCA3209	9	32	10	4°
MSFX-BC3210	10	32	10	MSFX-BCA3210	10	32	10	4°
MSFX-BC3211	11	32	10	MSFX-BCA3211	11	32	10	4°
MSFX-BC3212	12	32	10	MSFX-BCA3212	12	32	10	4°
MSFX-BC3213	13	32	10	MSFX-BCA3213	13	32	10	4°



CAPELLA Plif Cage



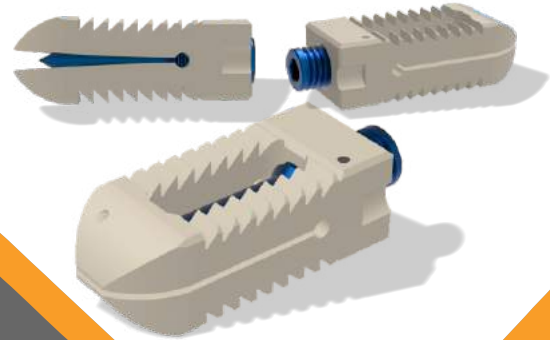
Features

- Self-distracting, bulleted nose, facilitating insertion
- Convex-shaped Implants, designed to the patient anatomy and to allow more accurate sizing
- Teeth on the surface, minimizing the risk of expulsion
- Large contact area, minimizing the risk of subsidence
- Simple, ergonomic and intelligent instrumentation

Code	Height	Length	Width	Code	Height	Length	Width	Angled
MSFX-LCD2206	6	22	10	MSFX-LCA2206	6	22	10	4°
MSFX-LCD2207	7	22	10	MSFX-LCA2207	7	22	10	4°
MSFX-LCD2208	8	22	10	MSFX-LCA2208	8	22	10	4°
MSFX-LCD2209	9	22	10	MSFX-LCA2209	9	22	10	4°
MSFX-LCD2210	10	22	10	MSFX-LCA2210	10	22	10	4°
MSFX-LCD2211	11	22	10	MSFX-LCA2211	11	22	10	4°
MSFX-LCD2212	12	22	10	MSFX-LCA2212	12	22	10	4°
MSFX-LCD2406	6	24	10	MSFX-LCA2214	14	22	10	4°
MSFX-LCD2407	7	24	10	MSFX-LCA2216	16	22	10	4°
MSFX-LCD2408	8	24	10	MSFX-LCA2406	6	24	10	4°
MSFX-LCD2409	9	24	10	MSFX-LCA2407	7	24	10	4°
MSFX-LCD2410	10	24	10	MSFX-LCA2408	8	24	10	4°
MSFX-LCD2411	11	24	10	MSFX-LCA2409	9	24	10	4°
MSFX-LCD2412	12	24	10	MSFX-LCA2410	10	24	10	4°
				MSFX-LCA2411	11	24	10	4°
				MSFX-LCA2412	12	24	10	4°



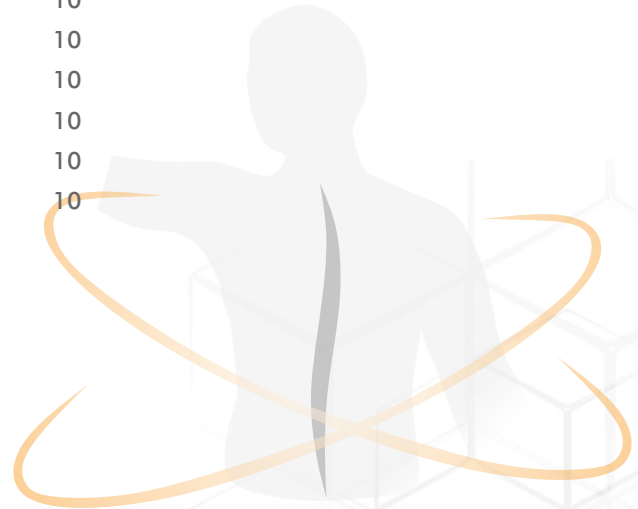
CAPELLA-X Plif Expandable Cage



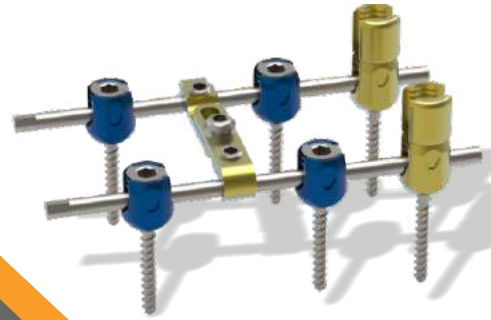
Features

- Self-distracting, bulleted nose, facilitating insertion
- Easy to implant with sharp ended design.
- Teeth on the surface, minimizing the risk of expulsion
- Graft area, maximizing the chances of a successful fusion
- Large contact area, minimizing the risk of subsidence

Code	Height	Length	Width
MSFX-EPC1007	7	24	10
MSFX-EPC1008	8	24	10
MSFX-EPC1009	9	24	10
MSFX-EPC1010	10	24	10
MSFX-EPC1011	11	24	10
MSFX-EPC1012	12	24	10
MSFX-EPC1013	13	24	10




PEDIS Spinal System




Features

- The pedis pediatric pedicle system consists of polyaxial screws, and reduction screw, various rods, and locking set screws to provide efficient and secure top-loading, rigid fixation in posterior lumbar fusions for pediatric patient.

Polyaxial Screw

Code	Size
 MSFX-PPAS3520	3.5x20 mm
MSFX-PPAS3530	3.5x30 mm
MSFX-PPAS3535	3.5x35 mm
MSFX-PPAS3540	3.5x40 mm
MSFX-PPAS4020	4.0x20 mm
MSFX-PPAS4025	4.0x25 mm
MSFX-PPAS4030	4.0x30 mm
MSFX-PPAS4035	4.0x35 mm
MSFX-PPAS4040	4.0x40 mm
MSFX-PPAS4530	4.5x30 mm
MSFX-PPAS4535	4.5x35 mm
MSFX-PPAS4540	4.5x40 mm
MSFX-PPAS4545	4.5x45 mm
MSFX-PPAS5030	5.0x30 mm
MSFX-PPAS5035	5.0x35 mm
MSFX-PPAS5040	5.0x40 mm
MSFX-PPAS5045	5.0x45 mm


Pedis Pediatric Polyaxial Spondylolisthesis Screw

Code	Size
 MSFX-SPPAS4035	4.0x35 mm
MSFX-SPPAS4040	4.0x40 mm
MSFX-SPPAS4045	4.0x45 mm
MSFX-SPPAS5035	5.0x35 mm
MSFX-SPPAS5040	5.0x40 mm
MSFX-SPPAS5045	5.0x45 mm

Transverse Connector

Code	Size
 MSFX-PTC40	40 mm
MSFX-PTC50	50 mm
MSFX-PTC60	60 mm

Laminar Hooks

Code	Size
 MSFX-PLH4055	4.0x5.5 mm
MSFX-PLH4065	4.0x6.5 mm
MSFX-PLH4075	4.0x7.5 mm
MSFX-PLH5055	5.0x5.5 mm
MSFX-PLH5065	5.0x6.5 mm
MSFX-PLH5075	5.0x7.5 mm
MSFX-PLH0607	6.0x7.0 mm

Rod


Code	Size
MSFX-PPR40	5.0x40 mm
MSFX-PPR60	5.0x60 mm
MSFX-PPR80	5.0x80 mm
MSFX-PPR100	5.0x100 mm
MSFX-PPR120	5.0x120 mm
MSFX-PPR140	5.0x140 mm
MSFX-PPR160	5.0x160 mm
MSFX-PPR180	5.0x180 mm
MSFX-PPR200	5.0x200 mm
MSFX-PPR250	5.0x250 mm
MSFX-PPR300	5.0x300 mm
MSFX-PPR400	5.0x400 mm
MSFX-PPR500	5.0x500 mm

Domino Connector

Code	Size
MSFX-PPRC5060	5.0/6.0 mm
MSFX-PPRC7550	5.0/5.0 mm
MSFX-PPAK	S
MSFX-PPAO	M
MSFX-PPAB	L



Pedicular Hooks

Code	Size
 MSFX-PPH7555	7.5x5.5 mm
MSFX-PPH7565	7.5x6.5 mm
MSFX-PPH0605	6.0x5.0 mm
MSFX-PPH0705	7.0x5.0 mm
MSFX-PPH0707	7.0x7.0 mm
MSFX-PPH0905	9.0x5.0 mm
MSFX-PPH0907	9.0x7.0 mm

Lateral Connector

Code	Size
MSFX-OCNTPE	

Extension Connector

Code	Size
MSFX-OCNTPE	



HEAD OFFICE

İvedik OSB Ağaç İşleri San. Sit. 1372. Sok. No: 31
06378 - Yenimahalle - ANKARA / TURKEY

FACTORY

Dağyaka Mah. Dağyaka Cad. No: 38
06980 - Kahramankazan - ANKARA / TURKEY

info@mikronmakina.com

www.mikronmakina.com

+90 312 395 17 00

+90 312 802 00 66