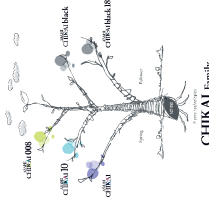


ASAHI CHIKAI Family

Neurovascular Guide Wire

Your dreams. Woven together.

Specification & ordering information						
Product	Crabclay No.	O.D.	Coating	Usable length	Coil length	Tip shape
ASAHI CHIKAI 008	WAN-CH008-200	0.20 / 0.26mm (0.008 / 0.010in)	Hydrophilic coating (SIP+COAT™) 190mm	200mm	9mm	Straight
	WAN-CH016-200	0.26mm (0.010in)	Hydrophilic coating (SIP+COAT™) 170mm	200mm	9.5mm	Straight
	WAN-CH016-300	0.26mm (0.010in)	Hydrophilic coating (SIP+COAT™) 170mm	300mm	9.5mm	Straight
ASAHI CHIKAI	WAN-CH0300	0.28mm (0.011in)	Hydrophilic coating (SIP+COAT™) 170mm	200mm	30mm	Straight
	WAN-CH0300-4C	0.28mm (0.011in)	Hydrophilic coating (SIP+COAT™) 170mm	200mm	30mm	Round curve
	WAN-CH0300	0.28mm (0.011in)	Hydrophilic coating (SIP+COAT™) 170mm	300mm	30mm	Straight
	WAN-CH0300-4C	0.28mm (0.011in)	Hydrophilic coating (SIP+COAT™) 170mm	300mm	30mm	Round curve
ASAHI CHIKAI black	WAN-CH0500-BS	0.32mm (0.013in)	Polymer jacket / Hydrophilic coating (SIP+COAT™) 170mm	200mm	30mm	Round curve
	WAN-CH0500-BSA	0.28mm (0.011in)	Polymer jacket / Hydrophilic coating (SIP+COAT™) 170mm	200mm	30mm	Angled 90°
ASAHI CHIKAI black 18	WAN-CH0600-BS	0.45 / 0.41mm (0.018 / 0.016in)	Polymer jacket / Hydrophilic coating (SIP+COAT™) 170mm	200mm	34mm	Round curve



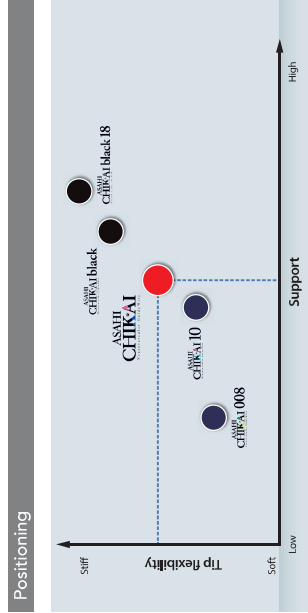
CE 0344

Not a device, as defined in article 1 of the Medical Devices Directive, with your clear representation. Contact with ASHI INTECC CORPORATION. *ASAHI*, *CHIKAI* and *ACI ONE* are trademarks or registered trademarks of ASAHI INTECC CO., LTD. in Japan and other countries. Distributed by:

ASAHI INTECC

ASAHI INTECC CO.,LTD.
 9-100 Araiha-cho, Saito, Aichi 485-0271 Japan
 Contact phone number: +81-561-4484101
<http://www.asahi-intecc.com>

ASAHI CHIKAI Family / ASCHI 17012



normal vessels / standard cases

tiny vessels / precision cases

tortuous vessels / complex cases

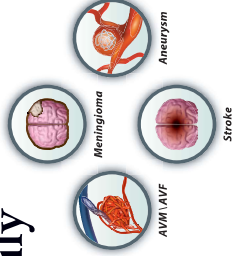
large vessels / high support cases

ASAHI CHIKAI Family

Neurovascular GuideWire

Providing good torque response, support and durability for neuro interventional procedures

ASAHI CHIKAI family of guide wires has been originally developed based on Asahi Intecc's unique set of technologies which accomplished great success in the field of cardiovascular interventions.



Technologies with Dual-coil design using ACT ONE

Employs the ASHI brand rope coil which provides torqueability, flexibility and resiliency.
 ASHI INTECC CO., LTD.'s unique technologies in wire drawing, wire forming, torque transmission and coating are utilized to create highly responsive guide wires featuring ASAHI'S ACT ONE dual-coil design.

Key features

- Precise torque response**
 - ACT ONE provides exceptional torque response in tortuous anatomy.
- Durable tip-shape retention**
 - Incorporating with ACT ONE, re-shapable pre-shaped round curve and 90 degree angle enhance tip shape memory and durability.
- Round curve**
 - Available for CHIKAI black and CHIKAI blue
- Angled 90°**
 - Available for CHIKAI black

ASAHI CHIKAI

Neurovascular GuideWire

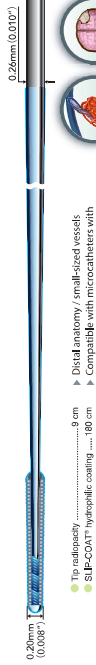
ASAHI CHIKAI ASAHI CHIKAI 10 and ASAHI CHIKAI 008 are designed for an optimal balance between tip flexibility and microcatheter support

0.008" (0.020")

0.010" (0.025")

0.014" (0.035")

ASAHI CHIKAI 008 (200cm)



- Tip radiopacity 8 cm
- Polymer jacket length 180 cm
- SLIP-COAT™ hydrophilic coating 180 cm

Distal anatomy / small-sized vessels
Compatible with microcatheters with small inner lumen

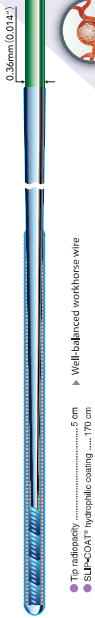
ASAHI CHIKAI 10 (200cm, 300cm)



- Tip radiopacity 8 cm
- Polymer jacket length 170 cm
- SLIP-COAT™ hydrophilic coating 170 cm

Mild to distal anatomy / larger-sized vessels
Compatible with microcatheters with relatively larger inner lumen

ASAHI CHIKAI (200cm, 300cm)



- Tip radiopacity 8 cm
- Polymer jacket length 170 cm
- SLIP-COAT™ hydrophilic coating 170 cm

Well-balanced workhorse wire

ASAHI CHIKAI black

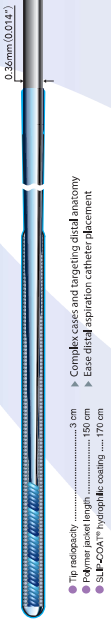
Neurovascular GuideWire

Providing excellent support and less friction due to polymer jacket and hydrophilic coating for smooth delivery of microcatheter

0.014" (0.035")

0.018" (0.045")

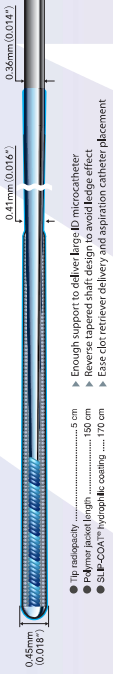
ASAHI CHIKAI black (200cm)



- Tip radiopacity 8 cm
- Polymer jacket length 150 cm
- SLIP-COAT™ hydrophilic coating 170 cm

Complex cases and targeting distal anatomy
Ease distal aspiration catheter placement

ASAHI CHIKAI black 18 (200cm)



- Tip radiopacity 8 cm
- Polymer jacket length 150 cm
- SLIP-COAT™ hydrophilic coating 170 cm

Enough support to deliver large ID microcatheter
Reverse tapered shaft design to avoid ledge effect
Easy for retriever delivery and aspiration catheter placement

