

## DS-3E0106HP-E

### 4-Port 100 Mbps Long-Range Unmanaged PoE Switch

DS-3E0106HP-E switches are layer 2 100 Mbps long-range PoE switches, providing 1 × 10/100 Mbps Hi-PoE port, 3 × 10/100 Mbps PoE ports, and 2 × 10/100 Mbps RJ45 ports. The switches provide advanced Hi-PoE/PoE technology and support extend mode with long-range access up to 300 m. The prior and stable transmission of the important surveillance area videos can also be guaranteed when connected to the high priority ports. Meanwhile, the 2 × 10/100 Mbps RJ45 uplink ports guarantee applications of multiple network solutions.



Intelligent PoE



300 m Transmission



802.3bt Hi-PoE



8-Core Power Supply



6 KV Surge Protection



High Priority Ports

## Feature and Function

### Intelligent PoE Management.

- When the power supply exceeds the limit, PoE ports intelligently manage the power supply, which extends the switch lifetime.

### Up to 300 m Long Range PoE Transmission.

- The distance between IPCs and switch can reach maximum 300 meters.

### IEEE 802.3bt Standard Hi-PoE, Max. 60 W for One Port.

- IEEE 802.3bt standard Hi-PoE port provides max. 60 W power supply for high power devices such as domes or other 802.3bt devices.

### 4/8-Core Adaptive Power Supply with Less Power Loss.

- 8-core power supply reduces the power loss on cables.

### 6KV Surge Protection to Improve Reliability in Harsh Environment.

- The built-in surge protection device protects the switch from the sudden lightning surge in harsh environment.

### Design for Video Transmission.

- VIP port ensures important data transmission when network congestion occurs.

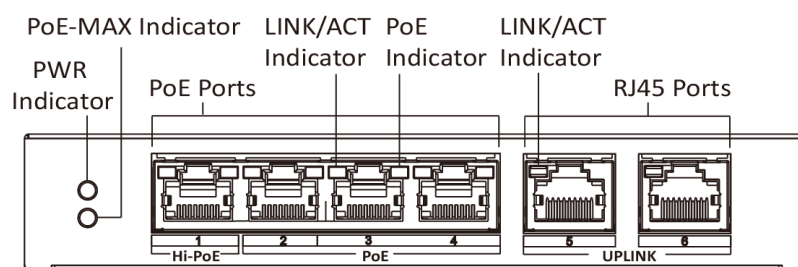


## Specification

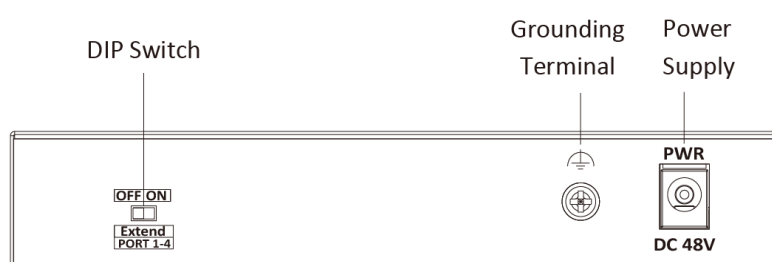
| Model              |                                      | DS-3E0106HP-E                                                                                                                                                                         |
|--------------------|--------------------------------------|---------------------------------------------------------------------------------------------------------------------------------------------------------------------------------------|
| Network parameters | Port number                          | 1 × 10/100 Mbps Hi-PoE port, 3 × 10/100 Mbps PoE ports, and 2 × 10/100 Mbps RJ45 ports                                                                                                |
|                    | Port type                            | RJ45 port, full duplex, MDI/MDI-X adaptive                                                                                                                                            |
|                    | Standard                             | IEEE 802.3, IEEE 802.3u, IEEE 802.3x                                                                                                                                                  |
|                    | Forwarding mode                      | Store-and-forward switching                                                                                                                                                           |
|                    | Working mode                         | Standard mode (default); Extend mode                                                                                                                                                  |
|                    | High priority port                   | Ports 1 to 2                                                                                                                                                                          |
|                    | Ports for long-distance transmission | Ports 1 to 4                                                                                                                                                                          |
|                    | MAC address table                    | 2 K                                                                                                                                                                                   |
|                    | Switching capacity                   | 1.2 Gbps                                                                                                                                                                              |
|                    | Packet forwarding rate               | 0.893 Mpps                                                                                                                                                                            |
|                    | Internal cache                       | 768 Kbits                                                                                                                                                                             |
|                    |                                      |                                                                                                                                                                                       |
| PoE power supply   | PoE standard                         | Port 1: IEEE 802.3af, IEEE 802.3at, IEEE 802.3bt<br>Ports 2 to 4: IEEE 802.3af, IEEE 802.3at                                                                                          |
|                    | PoE power pin                        | Support 8-core power supply, Ethernet cable 1/2/3/6 and 4/5/7/8 provide power supply simultaneously.                                                                                  |
|                    | PoE port                             | Ports 1 to 4                                                                                                                                                                          |
|                    | Max. port power                      | Port 1: 60 W<br>Ports 2 to 4: 30 W                                                                                                                                                    |
|                    | PoE power budget                     | 60 W                                                                                                                                                                                  |
|                    | Max. power consumption               | 65 W                                                                                                                                                                                  |
| General            | Shell                                | Metal material, fan-free design                                                                                                                                                       |
|                    | Gross weight                         | 0.77 kg (1.70 lb)                                                                                                                                                                     |
|                    | Net weight                           | 0.24 kg (0.53 lb)                                                                                                                                                                     |
|                    | Dimension (L × H × D)                | 145 mm × 25.6 mm × 68.45 mm (5.7" × 1.0" × 2.7")                                                                                                                                      |
|                    | Operating temperature                | -10 °C to 55 °C (14 °F to 131 °F)                                                                                                                                                     |
|                    | Storage temperature                  | -40 °C to 85 °C (-40 °F to 185 °F)                                                                                                                                                    |
|                    | Operating humidity                   | 5% to 95% (no condensation)                                                                                                                                                           |
|                    | Storage humidity                     | 5% to 95% (no condensation)                                                                                                                                                           |
|                    | Power supply                         | 48 VDC, 1.35 A                                                                                                                                                                        |
|                    | Power consumption in idle            | 5 W                                                                                                                                                                                   |
| Approval           | EMC                                  | FCC (47 CFR Part 15, Subpart B); CE-EMC (EN 55032: 2015, EN 61000-3-2: 2014, EN 61000-3-3: 2013, EN 55024: 2010 +A1: 2015); RCM (AS/NZS CISPR 32: 2015); IC (ICES-003: Issue 6, 2016) |
|                    | Safety                               | UL (UL 60950-1); CB (IEC 60950-1:2005 + Am 1:2009 + Am 2:2013); CE-LVD (EN 60950-1:2005 + Am 1:2009 + Am 2:2013)                                                                      |
|                    | Chemistry                            | CE-RoHS (2011/65/EU); WEEE (2012/19/EU); Reach (Regulation (EC) No 1907/2006)                                                                                                         |

## Physical Interface

Front panel:



Back panel:



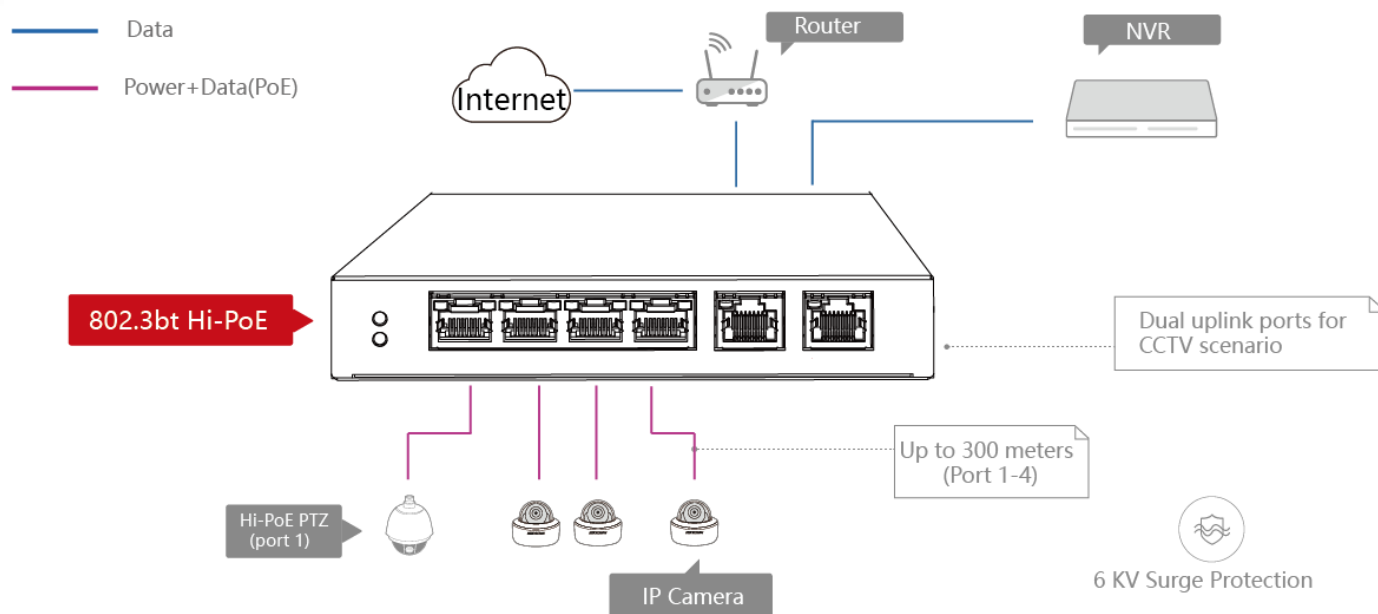
## Available Model

DS-3E0106HP-E

## Dimension (unit: mm)



## Typical Application



Distributed by

# HIKVISION®

### Headquarters

No.555 Qianmo Road, Binjiang District,  
Hangzhou 310051, China  
T +86-571-8807-5998  
overseasbusiness@hikvision.com

**HIKVISION USA**  
T +1-909-895-0400  
sales.usa@hikvision.com

**HIKVISION Australia**  
T +61-2-8599-4233  
salesau@hikvision.com

**HIKVISION India**  
T +91-22-28469900  
sales@pramahirvision.com

**HIKVISION Canada**  
T +1-866-200-6690  
sales.canada@hikvision.com

**HIKVISION Thailand**  
T +662-275-9949  
sales.thailand@hikvision.com

**HIKVISION Europe**  
T +31-23-5542770  
sales.eu@hikvision.com

**HIKVISION Italy**  
T +39-0438-6902  
info.it@hikvision.com

**HIKVISION Brazil**  
T +55 11 3318-0050  
Latam.support@hikvision.com

**HIKVISION Turkey**  
T +90 (216)521 7070- 7074  
sales.tr@hikvision.com

**HIKVISION Malaysia**  
T +601-7652-2413  
sales.my@hikvision.com

**HIKVISION UK & Ireland**  
T +01628-902140  
sales.uk@hikvision.com

**HIKVISION South Africa**  
Tel: +27 (10) 0351172  
sale.africa@hikvision.com

**HIKVISION France**  
T +33(0)1-85-330-450  
info.fr@hikvision.com

**HIKVISION Kazakhstan**  
T +7-727-9730667  
nikia.panfilov@hikvision.ru

**HIKVISION Vietnam**  
T +84-974270888  
sales.vt@hikvision.com

**HIKVISION UAE**  
T +971-4-4432090  
salesme@hikvision.com

**HIKVISION Singapore**  
T +65-6684-4718  
sg@hikvision.com

**HIKVISION Spain**  
T +34-91-737-16-55  
info.es@hikvision.com

**HIKVISION Tashkent**  
T +99-87-1238-9438  
uzb@hikvision.ru

**HIKVISION Hong Kong**  
T +852-2151-1761  
info.hk@hikvision.com

**HIKVISION Russia**  
T +7-495-669-67-99  
saleru@hikvision.com

**HIKVISION Korea**  
T +82-(0)31-731-8817  
sales.korea@hikvision.com

**HIKVISION Poland**  
T +48-22-460-01-50  
info.pl@hikvision.com

**HIKVISION Indonesia**  
T +62-21-2933759  
Sales.Indonesia@hikvision.com

**HIKVISION Colombia**  
sales.colombia@hikvision.com