



BILIARY
SHORTWIRE

SHOW
SHORT WIRE SYSTEM



LOCKING DEVICE GUIDE WIRE

OPTIMAL HOLD FOR UP TO TWO WIRES

The guide wire holder LOCKING DEVICE holder facilitates the use of short wire compatible instruments and fixes up to two guide wires in parallel. The double diaphragm of the valve reduces the escape of air and bile

reflux. It is possible to change the instrument at any time with the Albarran lever open, which is particularly helpful if the Albarran does not hold the guide wire optimally.

SPECIFIC CHARACTERISTICS

- Instrument change with open Albarran lever
- For short wire compatible instruments
- Up to two guide wires in parallel
- Double membrane reduces air leakage and bile reflux

SPECIFICATIONS

REF

Compatible Endoscope

LOCKING DEVICE GUIDE WIRE

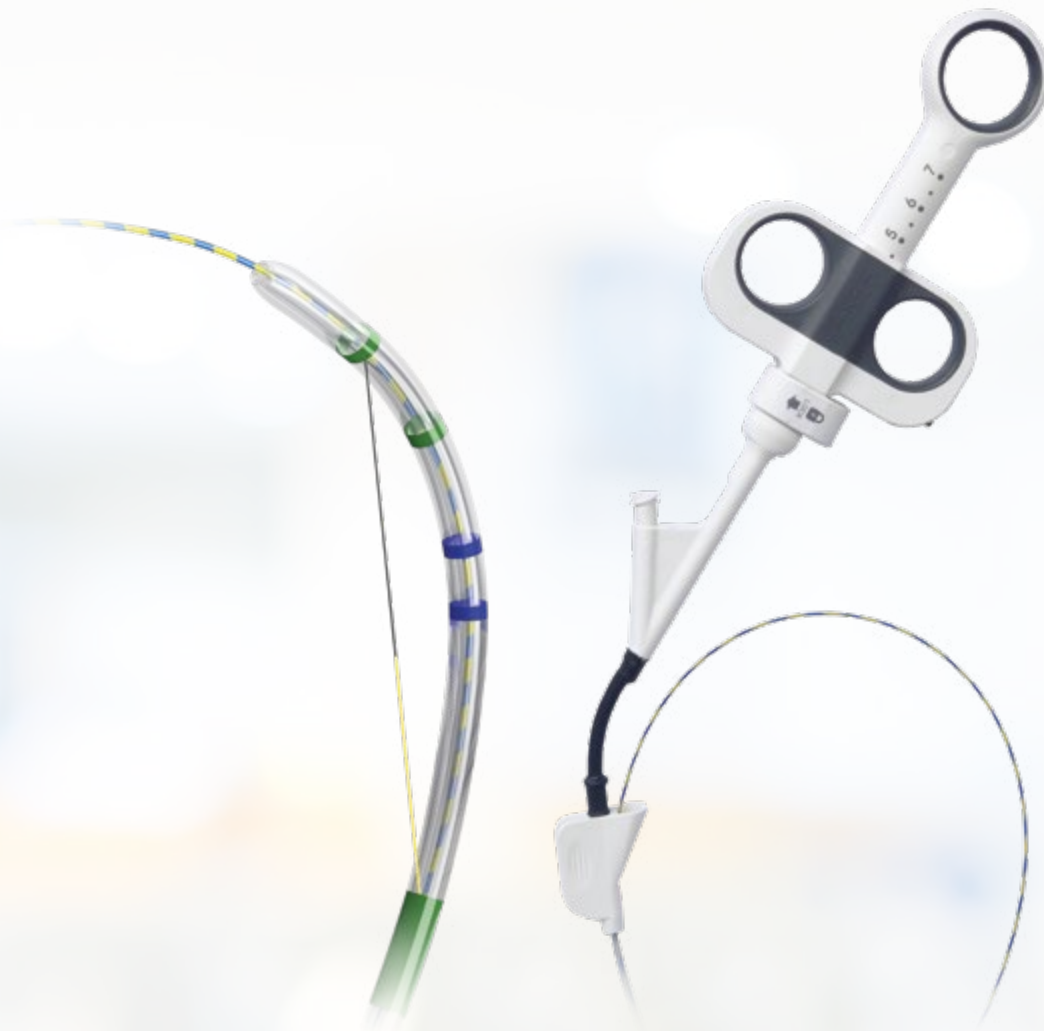
MT-RGL-O

Olympus/ Fujifilm

MT-RGL-P

Pentax

Packaging unit: 10 pieces



SPHINX 3-LUMEN PAPILOTOME

FOR PRECISE WIRE GUIDANCE AND CANNULATION

Thanks to the novel opening mechanism of the guide wire port, the papillotome can be used for both short wire and long wire procedures. The C-shaped guide wire lumen allows a gentle splitting movement to separate the guide

wire from the papillotome catheter. The adjustable tip ensures accurate cannulation and positioning of the cutting wire prior to papillotomy.

SPECIFIC CHARACTERISTICS

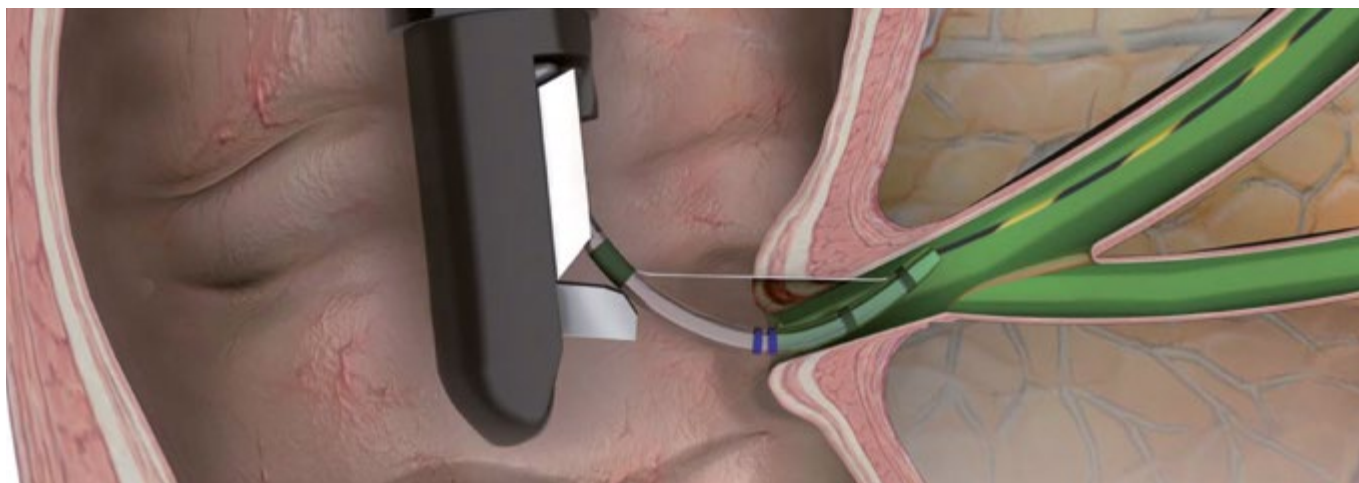
- 3 lumen for guide wire, cutting wire and contrast injection
- Optional insulation of proximal cutting wire
- Cutting direction at 11 o'clock
- Cone shape tip, tapered to 5 Fr
- Working length: 2.000 mm
- Outer diameter: 2.5 mm
- Guide wire compatible fully mobile up to 0.035 inch



Precise adjustment function



Tip: Precut



SPECIFICATIONS

REF	Tip length mm	Cutting wire length mm	Insulating coating	Guide wire length cm	Cutting wire monofil/polyfil	Tip shape	Working channel mm
SPHINX PAPILOTOME, 3-LUMEN							
RDSP-0020-111	0	20	No	No	monofil	Cone	≥ 3.2
RDSP-0020-121	0	20	No	260	monofil	Cone	≥ 3.2
RDSP-0020-131	0	20	No	450	monofil	Cone	≥ 3.2
RDSP-0025-111	0	25	No	No	monofil	Cone	≥ 3.2
RDSP-0025-121	0	25	No	260	monofil	Cone	≥ 3.2
RDSP-0025-131	0	25	No	450	monofil	Cone	≥ 3.2
RDSP-0030-111	0	30	No	No	monofil	Cone	≥ 3.2
RDSP-0030-121	0	30	No	260	monofil	Cone	≥ 3.2
RDSP-0030-131	0	30	No	450	monofil	Cone	≥ 3.2
RDSP-0220-111	2	20	No	No	monofil	Cone	≥ 3.2
RDSP-0220-121	2	20	No	260	monofil	Cone	≥ 3.2
RDSP-0220-131	2	20	No	450	monofil	Cone	≥ 3.2
RDSP-0225-111	2	25	No	No	monofil	Cone	≥ 3.2
RDSP-0225-121	2	25	No	260	monofil	Cone	≥ 3.2
RDSP-0225-131	2	25	No	450	monofil	Cone	≥ 3.2
RDSP-0230-111	2	30	No	No	monofil	Cone	≥ 3.2
RDSP-0230-121	2	30	No	260	monofil	Cone	≥ 3.2
RDSP-0230-131	2	30	No	450	monofil	Cone	≥ 3.2
RDSP-0520-111	2	20	No	No	monofil	Cone	≥ 3.2
RDSP-0520-121	5	20	No	260	monofil	Cone	≥ 3.2
RDSP-0520-131	5	20	No	450	monofil	Cone	≥ 3.2
RDSP-0525-111	5	25	No	No	monofil	Cone	≥ 3.2
RDSP-0525-121	5	25	No	260	monofil	Cone	≥ 3.2
RDSP-0525-131	5	25	No	450	monofil	Cone	≥ 3.2
RDSP-0530-111	5	30	No	No	monofil	Cone	≥ 3.2
RDSP-0530-121	5	30	No	260	monofil	Cone	≥ 3.2
RDSP-0530-131	5	30	No	450	monofil	Cone	≥ 3.2

Packaging unit: 1 piece

All Papillotome are also available with polyfilen and partly insulated cutting wires available on request. Cutting wire length also available in 20mm and 30mm on request.



GUIDE WIRES

THE RELIABLE CHOICE FOR ERCP

All guide wires are manufactured out of bending-resistant and torsion-proof Nitinol. Their hydrophilic coated tips, allow the wires to safely find their way even into areas and stenoses which are hard to reach. This is supported by the wire's high rigidity and controllability. Hence the guide wires are not only meant for sophisticated stent

placements, but are also perfectly suited for ERCP. The high radiopacity of the flexible hydrophilic tip facilitates exact stent placement under visual radiological control. Two different series are available: the Classic-series made in Germany and the series from MICRO-TECH.

SPECIFIC CHARACTERISTICS

- Non-kinking nitinol wire
- High level of rigidity and guidability
- Hydrophilic, atraumatic tip
- Working length: up to 2600 mm
- High level of radiopacity



SUCCESSFUL IN PRACTICAL ROUTINE WORK

Bending resistance and rigidity account for the very good feeding properties of guide wires. In daily applications they convince by their precision, which is primarily guaranteed by the efficient transmission of the rotatory and translatory motion all the way to the tip of the wire, as applied by the surgical assistant. This makes it possible to reach into even anatomically difficult passages with ease. In addition, the tip of each wire can be perfectly seen in the X-ray control image, allowing for optimal stent positioning.



Endoscopic view



X-ray

DISPENSER FOR EASY OPERATION

The wire can be easily ejected and retracted by means of this innovative dispenser. Owing to its compact design, the dispenser is handy and easy to operate. Rinsing the wire is also easy and fast when using the dispenser.

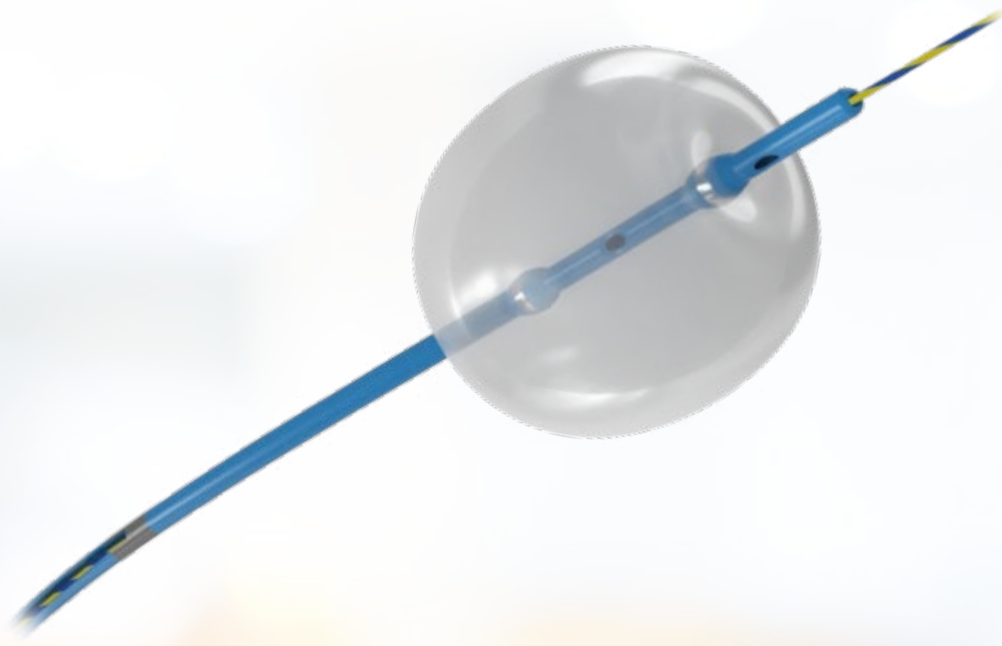


Dispenser guide wires

SPECIFICATIONS

REF	Ø inches	Total length mm	Tip length mm	Tip form	Set-up	Covering
CLASSIC GUIDE WIRE						
600505-5	0.035"	2600	130	straight	hydrophilic, radiopaque	extra stiff
600365-5	0.035"	2000	50	straight	radiopaque	black covering
600366-5	0.035"	2000	50	straight	radiopaque	black-yellow
GUIDE WIRE						
MTN-BM-89/26-A	0.035"	2600	65	straight	hydrophilic, radiopaque	blue-yellow
MTN-BM-89/26-A-J	0.035"	2600	65	J-form	hydrophilic, radiopaque	blue-yellow
MTN-BM-63/26-A	0.025"	2600	65	straight	hydrophilic, radiopaque	blue-yellow
MTN-BM-63/26-A-J	0.025"	2600	65	J-form	hydrophilic, radiopaque	blue-yellow

Packaging unit: Classic guide wire: 1 piece, Guide wire: 2 pieces



SWEEPER STONE EXTRACTION BALLOONS

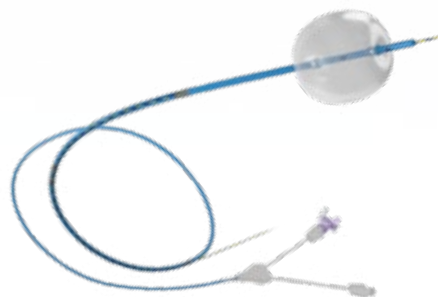
ONE BALLOON, THREE DIAMETERS

MICRO-TECH's vast product range includes high-quality 3-lumen extraction balloons for reliable removal of small stones and sludge from the bile duct. The conical, atraumatic tip of the catheter makes for easy, precise positioning using the two x-ray markers. The cylindrical balloon itself is made of high-quality latex and can be expanded to three different diameters. A specially calibrated single-use

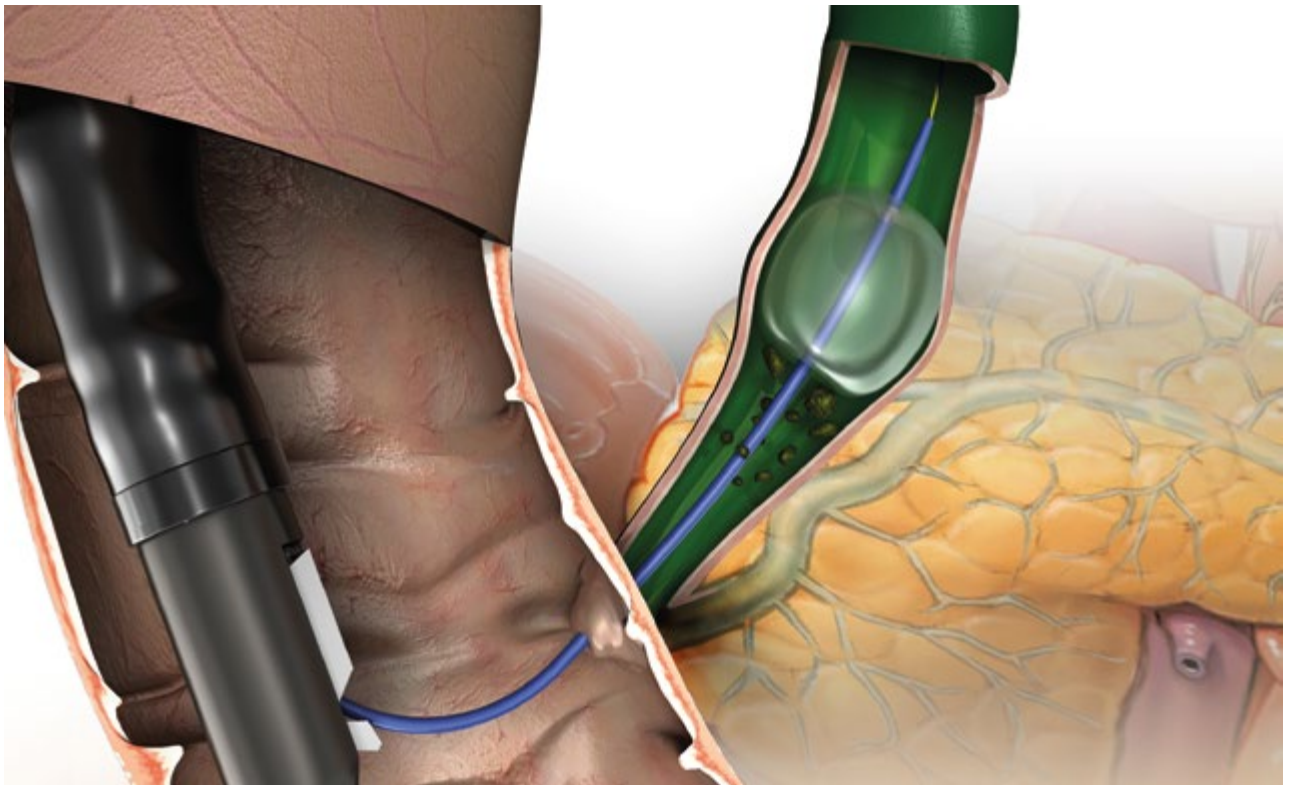
syringe is supplied for each balloon diameter. Following insufflation, the balloon surface lies flat against the bile duct wall, enabling efficient and complete cleaning of the bile duct. A separate lumen for a 0.035 inch guide wire and one for contrast media, provide for ease of handling and contrast injection.

SPECIFIC CHARACTERISTICS

- 3-stage balloons
- One calibrated tip per diameter
- High quality latex
- 3 lumen for insufflation, guidewire and contrast agent
- High X-ray visibility (radiopacity)



3-lumen stone extraction balloon from MICRO-TECH



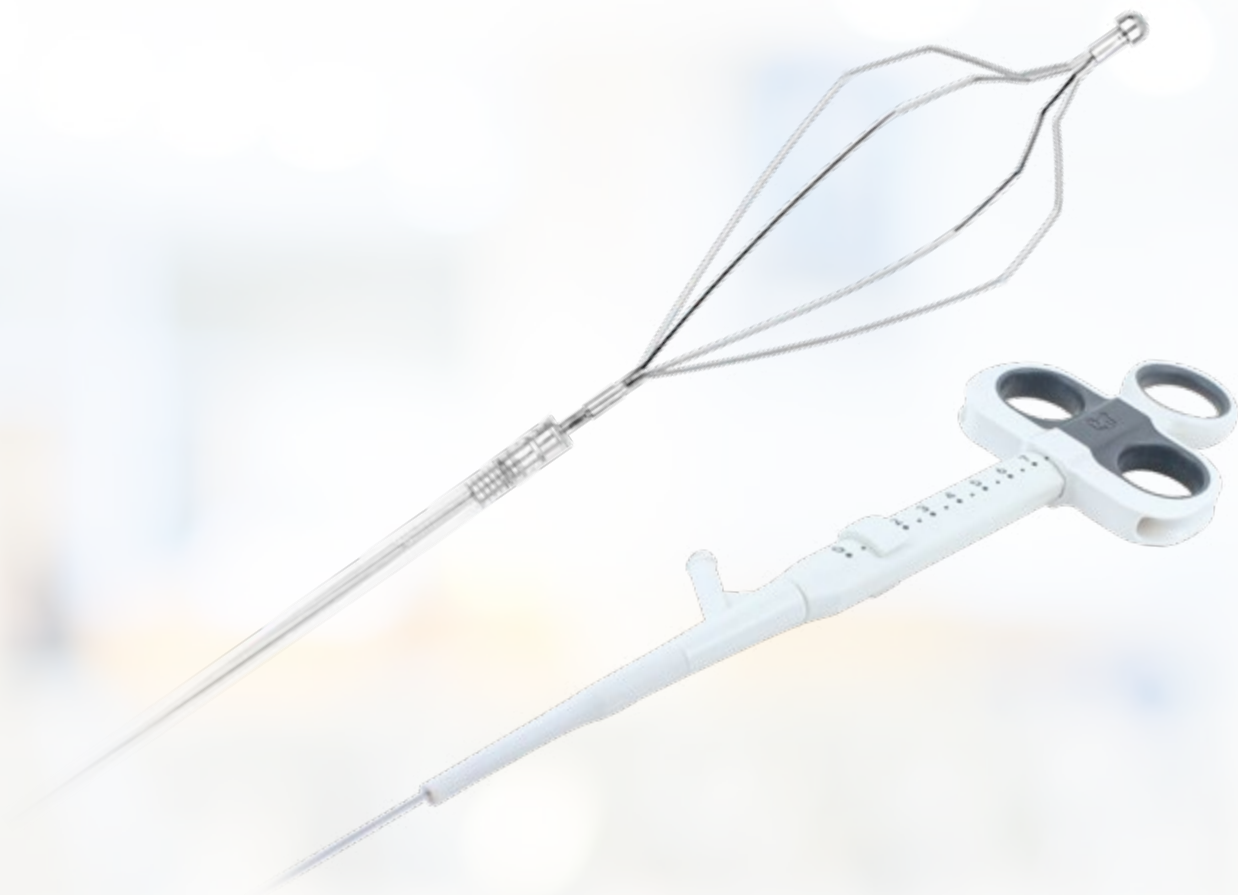
SPECIFICATIONS

REF	Ø inches	Total length mm	Tip length mm	Tip form	Set-up	Covering
GUIDE WIRE						
MTN-BM-89/26-A	0.035"	2600	65	straight	hydrophilic, radiopaque	blue-yellow
MTN-BM-89/26-A-J	0.035"	2600	65	J-form	hydrophilic, radiopaque	blue-yellow
MTN-BM-63/26-A	0.025"	2600	65	straight	hydrophilic, radiopaque	blue-yellow
MTN-BM-63/26-A-J	0.025"	2600	65	J-form	hydrophilic, radiopaque	blue-yellow

Packaging unit: 2 pieces

REF	Injection	Lumen	Catheter Ø Fr.	Balloon Ø mm	Working length mm
SWEEPER STONE EXTRACTION BALLOONS					
RSRB-T-9/12/15-20	Above (distal to the balloon)	3	7	9 / 12 / 15	2000
RSRB-T-12/15/18-20	Above (distal to the balloon)	3	7	12 / 15 / 18	2000
RSRB-T-15/18/21-20	Above (distal to the balloon)	3	7	15 / 18 / 21	2000
RSRB-T-9/12/15-20-B	Below (proximal to the balloon)	3	7	9 / 12 / 15	2000
RSRB-T-12/15/18-20-B	Below (proximal to the balloon)	3	7	12 / 15 / 18	2000
RSRB-T-15/18/21-20-B	Below (proximal to the balloon)	3	7	15 / 18 / 21	2000

Packaging unit: 1 piece



STONE EXTRACTION BASKET

DESIGNED FOR WIRE-GUIDED STONE EXTRACTION

The stone extraction baskets from the SHOW series enable the endoscopic removal of stones from the bile ducts. The basket consists of four hexagonally shaped stainless

steel cables. The hose tip on the distal end, enables wire-guided stone extraction. The extraction baskets are available in two sizes to meet various clinical requirements.

SPECIFIC CHARACTERISTICS

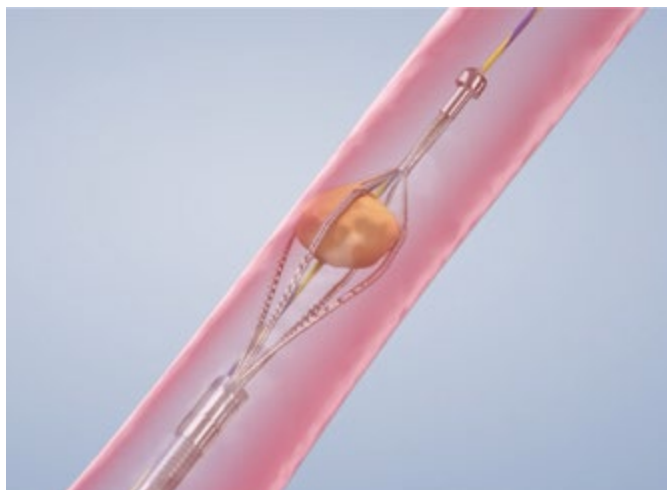
- Basket made of four stainless steel wires in a hexagonal shape
- Available in sizes 15 and 20 mm
- Suitable for short and long wire ERCP
- Not suitable for lithotripsy
- Latex-free
- Compatible guidewire 0.035 inch



Distal end with hose tip



The entire system has a Working length of 2,000 mm



SPECIFICATIONS

REF	Form	Ø basket mm	Working channel mm	Working length (mm)
STONE EXTRACTION BASKET				
RSEB-H4-15	Hexagonal, 4 cables	15	3.7	2000
RSEB-H4-20	Hexagonal, 4 cables	20	3.7	2000

Packaging unit: 1 box



BILE DUCT STENTS

DRAINAGE FOR SHORT WIRE SURGERY

The plastic prostheses of the SHOW series have been specially developed for draining the bile ducts using short-wire technology. They are available in numerous lengths and shapes and can be used in a variety of ways: whether for malignant biliary obstructions, benign biliary stricture or biliary fistulas. Flaps on the ends and the great dimen-

sional stability of the latex-free PE plastic ensure good positional stability. In order to position and release the stent precisely, the tapered tip of the guide catheter has an additional X-ray marker. The locking function of the handle provides additional support.

SPECIFIC CHARACTERISTICS

- Safe insertion and positioning
- Available in straight, curved and proximal bends
- Automatic guide wire exit
- Guide catheter with X-ray marking
- Compatible with short and long wires



Prosthesis on a conical guide catheter



X-ray marking for safe placement

SPECIFICATIONS

STRAIGHT STENT



Length mm	7FR	8,5FR	10FR
50	RBPDS-3107-05/20	RBPDS-3108-05/20	RBPDS-3110-05/20
70	RBPDS-3107-07/20	RBPDS-3108-07/20	RBPDS-3110-07/20
90	RBPDS-3107-09/20	RBPDS-3108-09/20	RBPDS-3110-09/20
110	RBPDS-3107-11/20	RBPDS-3108-11/20	RBPDS-3110-11/20
130	RBPDS-3107-13/20	RBPDS-3108-13/20	RBPDS-3110-13/20
150	RBPDS-3107-15/20	RBPDS-3108-15/20	RBPDS-3110-15/20

CURVED STENT



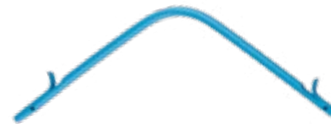
Length mm	7FR	8,5FR	10FR
50	RBPDS-3207-05/20	RBPDS-3208-05/20	RBPDS-3210-05/20
70	RBPDS-3207-07/20	RBPDS-3208-07/20	RBPDS-3210-07/20
90	RBPDS-3207-09/20	RBPDS-3208-09/20	RBPDS-3210-09/20
110	RBPDS-3207-11/20	RBPDS-3208-11/20	RBPDS-3210-11/20
130	RBPDS-3207-13/20	RBPDS-3208-13/20	RBPDS-3210-13/20
150	RBPDS-3207-15/20	RBPDS-3208-15/20	RBPDS-3210-15/20

ANGLED STENT

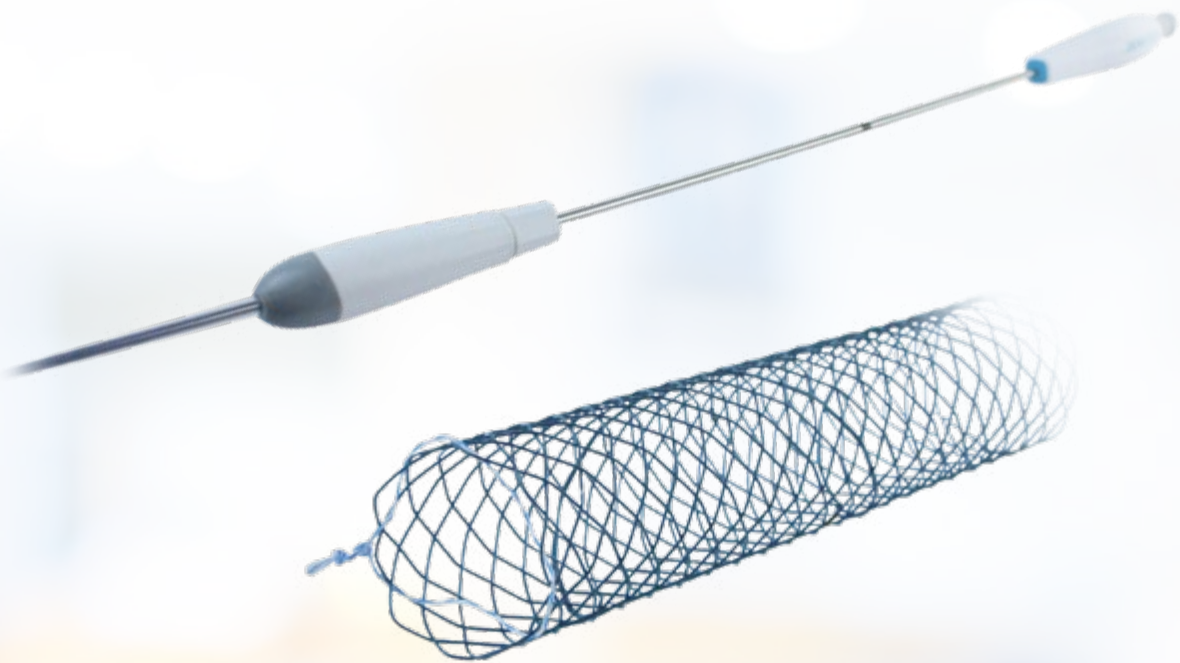


Length mm	7FR	8,5FR	10FR
50	RBPDS-3307-05/20	RBPDS-3308-05/20	RBPDS-3310-05/20
70	RBPDS-3307-07/20	RBPDS-3308-07/20	RBPDS-3310-07/20
90	RBPDS-3307-09/20	RBPDS-3308-09/20	RBPDS-3310-09/20
110	RBPDS-3307-11/20	RBPDS-3308-11/20	RBPDS-3310-11/20
130	RBPDS-3307-13/20	RBPDS-3308-13/20	RBPDS-3310-13/20
150	RBPDS-3307-15/20	RBPDS-3308-15/20	RBPDS-3310-15/20

CONCENTRIC ANGLED STENT



Length mm	7FR	8,5FR	10FR
50	RBPDS-3407-05/20	RBPDS-3408-05/20	RBPDS-3410-05/20
70	RBPDS-3407-07/20	RBPDS-3408-07/20	RBPDS-3410-07/20
90	RBPDS-3407-09/20	RBPDS-3408-09/20	RBPDS-3410-09/20
110	RBPDS-3407-11/20	RBPDS-3408-11/20	RBPDS-3410-11/20
130	RBPDS-3407-13/20	RBPDS-3408-13/20	RBPDS-3410-13/20
150	RBPDS-3407-15/20	RBPDS-3408-15/20	RBPDS-3410-15/20



SHOW-METAL-STENT

INDEPENDENCE AT ITS BEST

The SHOW-Metal-Stent from MICRO-TECH is indicated for applications in the bile duct and is suitable for both short and long wire systems. Time-consuming preparation and irrigation is no longer necessary. Made of flexible nitinol wire, the stent is designed to adapt ideally to biliary conditions. The atraumatic stent ends are characterized by their soft edges. For precise placement, there are overall

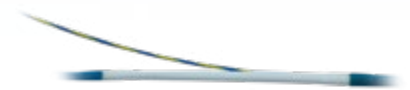
10 radiopaque markers on the stent itself and three more on the introducer set. The point-of-no-return (for uncovered and partially covered stents) allows resheathing of the stent which means it can be repositioned. The guide wire exit is located at approx. 30 cm. Our range includes stents with four different lengths of 40 to 100 mm and thus offers for each operation the ideal solution.

SPECIFIC CHARACTERISTICS

- Short and long wire compatible
- No preparation or flushing necessary
- Easy handling
- Uncovered, partially covered and fully covered
- Available in a straight form
- Automatic guide wire exit
- Point-of-no-return
- Very good visibility through tantalum markers
- Very flexible application system facilitates the placement



Extraction suture at proximal Stent-End



Guidewire discharge at ca. 30 cm from distal end

SPECIFICATIONS

REF	Ø mm	Length mm	Covering mm	Ø Catheter mm	Working length mm	Repositionable	Recommended GW inch
SHOW-METAL-STENTS							
RST43-001-10.040	10	40	without	2.83	1900	Yes	0.035"
RST43-001-10.060	10	60	without	2.83	1900	Yes	0.035"
RST43-001-10.080	10	80	without	2.83	1900	Yes	0.035"
RST43-001-10.100	10	100	without	2.83	1900	Yes	0.035"
RST43-002-10.040	10	40	30	2.83	1900	Yes	0.035"
RST43-002-10.060	10	60	50	2.83	1900	Yes	0.035"
RST43-002-10.080	10	80	70	2.83	1900	Yes	0.035"
RST43-002-10.100	10	100	90	2.83	1900	Yes	0.035"
RST43-004-10.040	10	40	40	2.83	1900	No	0.035"
RST43-004-10.060	10	60	60	2.83	1900	No	0.035"
RST43-004-10.080	10	80	80	2.83	1900	No	0.035"
RST43-004-10.100	10	100	100	2.83	1900	No	0.035"

Packaging unit: 1 piece

REF	Ø inches	Total length mm	Tip length mm	Tip form	Set-up	Covering
GUIDE WIRE						
MTN-BM-89/26-A	0.035"	2600	65	straight	hydrophilic, radiopaque	blue-yellow covering
MTN-BM-89/26-A-J	0.035"	2600	65	J-form	hydrophilic, radiopaque	blue-yellow covering

Packaging unit: 2 pieces

