



LIGHTING CRUISE
TOWARDS BRIGHTER FUTURE



LUG is a leading European manufacturer of professional lighting solutions with more than 30 years of experience. The company specializes in manufacturing infrastructural and industrial luminaires as well as decorative lighting for internal and external illumination of public utility buildings, sales areas and architectonic objects. A rich product portfolio, with over 6 thousand different versions of luminaires, allows the company for providing a comprehensive set of solutions for all kinds of projects. An in-house team of lighting designers, an R&D Department with a fully equipped laboratory and a Customization Section allow LUG for adapting its products to the individual needs of even the most demanding projects. In addition to our wide range of professional lighting solutions, we offer support from our teams of lighting designers, architects and technical advisors. This enables us to provide support at any stage of even the most complex projects. Moreover, our dedicated team specializing in modernization of lighting systems carries our audits and modernization projects for our Partners enabling them to optimize the lighting solutions they use and thus significantly reduce energy consumption. What is more, thanks to our capacity to synergize advantages of LED and IoT technologies, we are also active in the smart lighting and smart city areas helping municipalities better adapt to the needs of their citizens and manage different aspects of city life more efficiently as well as helping businesses improving their efficiency and increasing the safety and comfort of their employees.



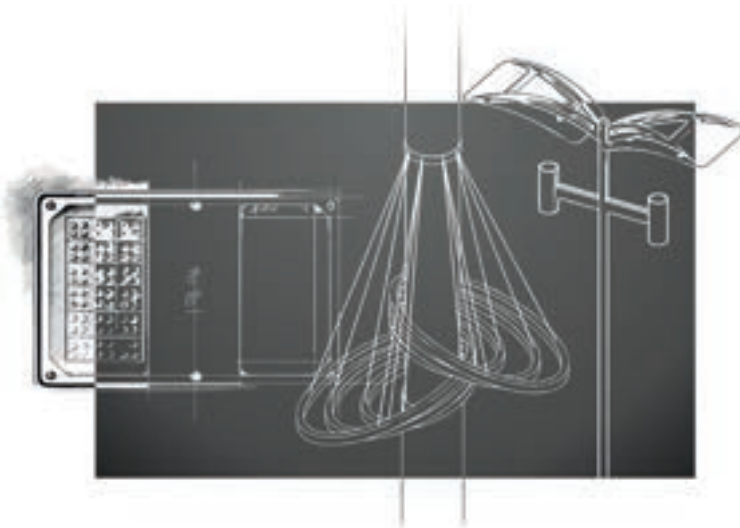
OWN R&D AND MANUFACTURING FACILITIES

based in Poland

Having our own R&D department with a fully equipped laboratory and modern manufacturing facilities enables us to carry out the entire solution development process from the concept phase through prototyping and testing to final product. This allows for a full optimization in terms of solution design and ensure its form always follows its function.

HIGHEST EUROPEAN QUALITY and internationally recognized design

Ensuring the highest quality is one of our top priorities. All our solutions are designed, developed, tested and manufactured at our facilities in Poland. Carrying out these processes in-house allows us to perform quality control at all stages and make sure that our solutions offer the highest degree of reliability. Our attention to detail and quality earned us trust of business Partners in 70 countries all over the world and recognition from the global industrial design community reflected in numerous awards such as iF design and red-dot for our solutions.



COMPREHENSIVE SOLUTIONS standard portfolio / custom / bespoke

To make sure that we can provide solutions suitable to particular needs of the projects we work on, we developed a wide portfolio of about 6 thousand versions of LED luminaires. Additionally, thanks to our know-how along with our R&D and manufacturing capacities, we are able to customize the products to specific needs and requirements of our Partners and even design, develop and manufacture bespoke solutions especially for a particular project.

EXPERT SUPPORT
architects / lighting designers
urban development specialists
technical advisers

In addition to our wide range of professional lighting solutions, we offer support from our team of lighting designers, architects and technical advisors. This enables us to provide support at any stage of even the most complex projects.



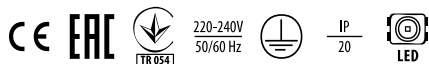


INTO LED

The INTO luminaire family was created for interiors characterized with modern simplicity in mind. A variety of sizes and methods of installation: from minimalist round and square downlights, through surface-mounted tubes, to a series of tubular suspended luminaires ensure the wide application of INTO family.

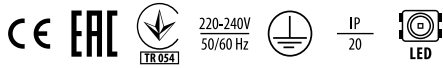
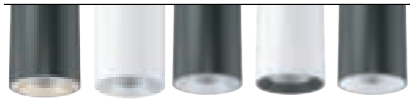


INTO R55 LED NT surface



power	6 [W]
Lumen luminaire	700 - 720 [lm]
Efficacy	117 - 120 [lm/W]
Colour temperature	3000, 4000
ULOR/DLOR	0/100
Power	220-240V 50/60Hz
CRI	≥80
Lifetime L80B10	60 000 h
Body	aluminum profile
Body colour	black, white
Operating temperature range	0 ... +45

INTO R100 LED NT surface



220-240V
50/60 Hz



IP
20



power	14 - 21 [W]
Lumen luminaire	1200 - 1900 [lm]
Efficacy	83 - 96 [lm/W]
Colour temperature	3000, 4000
ULOR/DLOR	0/100
Power	220-240V 50/60Hz
CRI	≥80
Lifetime L80B10	60 000 h
Body	aluminum profile
Body colour	black, white
Operating temperature range	0 ... +30 0 ... +35



INTO R55 LED ZW suspended

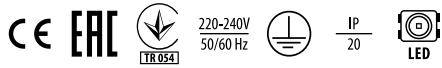


INTO R100 LED ZW suspended



INTO R160 LED ZW suspended

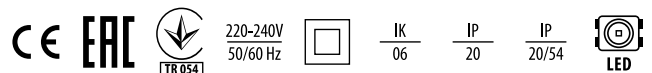
INTO R160 LED NT surface



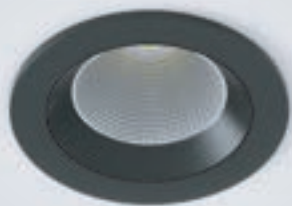
power	23 - 30 [W]
Lumen luminaire	2600 - 3550 [lm]
Efficacy	112 - 120 [lm/W]
Colour temperature	3000, 4000
ULOR/DLOR	0/100
Power	220-240V 50/60Hz
CRI	≥80
Lifetime L80B10	60 000 h
Body	aluminum profile
Body colour	black, white
Operating temperature range	0 ... +35



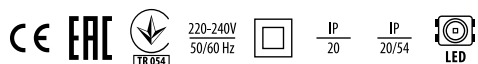
INTO R160 LED



power	23 - 30 [W]
Lumen luminaire	2600 - 3550 [lm]
Efficacy	112 - 120 [lm/W]
Colour temperature	3000, 4000
ULOR/DLOR	0/100
Power	220-240V 50/60Hz
CRI	≥80
Lifetime L80B10	60 000 h
Body	aluminum profile
Body colour	black, white
Operating temperature range	0 ... +35



INTO R55 LED



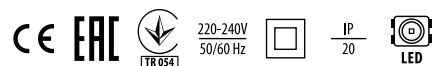
power	6 [W]
Lumen luminaire	640 - 720 [lm]
Efficacy	107 - 120 [lm/W]
Colour temperature	3000, 4000
ULOR/DLOR	0/100
Power	220-240V 50/60Hz
CRI	≥80
Lifetime L80B10	60 000 h
Body	aluminium
Body colour	black, white
Operating temperature range	0 ... +45

INTO R100 LED



power	14 - 21 [W]
Lumen luminaire	1100 - 1900 [lm]
Efficacy	71 - 96 [lm/W]
Colour temperature	3000, 4000
ULOR/DLOR	0/100
Power	220-240V 50/60Hz
CRI	≥80
Lifetime L80B10	60 000 h
Body	aluminium
Body colour	black, white
Operating temperature range	0 ... +40

LUGSTAR 3.0



power	11 - 23 [W]
Lumen luminaire	1500 - 2650 [lm]
Efficacy	111 - 141 [lm/W]
Colour temperature	3000, 4000
ULOR/DLOR	0/100
Power	220-240V 50/60Hz
CRI	≥80
Lifetime L80B10	100 000 h
Body	high pressure die-cast aluminum
Body colour	white
Operating temperature range	0 ... +35 0°C ... +35°C

LUGSTAR 3.0 S

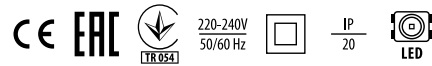


power	8 - 19.5 [W]
Lumen luminaire	1000 - 2400 [lm]
Efficacy	123 - 130 [lm/W]
Colour temperature	3000, 4000
ULOR/DLOR	0/100
Power	220-240V 50/60Hz
CRI	≥80
Lifetime LED L90	100 000 h
Body	aluminium
Body colour	white
Operating temperature range	0°C ... +35°C



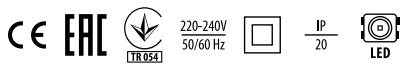


INTO S100 LED



power	14 - 20 [W]
Lumen luminaire	1400 - 1900 [lm]
Efficacy	90 - 107 [lm/W]
Colour temperature	3000, 4000
ULOR/DLOR	0/100
Power	220-240V 50/60Hz
CRI	≥80
Lifetime L80B10	60 000 h
Body	high pressure die-cast aluminum, plastic
Body colour	black, white
Operating temperature range	0 ... +40

INTO S160 LED



power	22 - 30 [W]
Lumen luminaire	2750 - 3750 [lm]
Efficacy	120 - 132 [lm/W]
Colour temperature	3000, 4000
ULOR/DLOR	0/100
Power	220-240V 50/60Hz
CRI	≥80
Lifetime L80B10	60 000 h
Body	high pressure die-cast aluminum, plastic
Body colour	black, white
Operating temperature range	0 ... +35



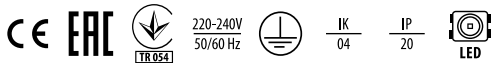


VOLICA 2.0 LED

Volica 2.0 is a wide family of minimalist luminaires and linear systems. It was created for comprehensive lighting of office and communication spaces in the area of commercial and residential real estate.



VOLICA 2.0 LED suspended



power	14 - 71 [W]
Lumen luminaire	1650 - 9500 [lm]
Efficacy	118 - 134 [lm/W]
Colour temperature	3000, 4000
ULOR/DLOR	0/100
Power	220-240V 50/60Hz
CRI	≥80
Lifetime L80B10	100 000 h
Body	aluminum profile
Body colour	anoda C-0, black, white
Operating temperature range	0 ... +35

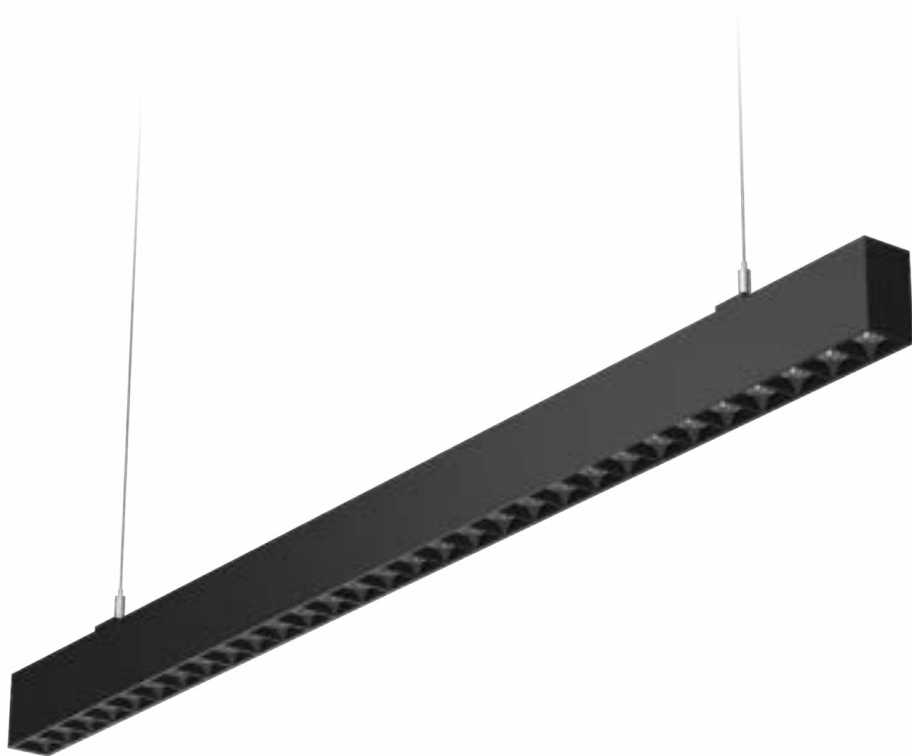


4EXPO, SUCHY LAS, POLAND

VOLICA 42 DOT LED suspended UGR<19



power	17 - 46 [W]
Lumen luminaire	1850 - 5000 [lm]
Efficacy	100 - 120 [lm/W]
Colour temperature	3000, 4000
ULOR/DLOR	0/100, 25/75
Power	220-240V 50/60Hz
CRI	≥80
Lifetime L80B10	100 000 h
Body	aluminum profile
Body colour	anoda C-0, black, white
Operating temperature range	0 ... +35





VOLICA 2.0 LED LOW - UGR suspended



power	9 - 46 [W]
Lumen luminaire	1300 - 7200 [lm]
Efficacy	142 - 157 [lm/W]
Colour temperature	3000, 4000
ULOR/DLOR	0/100
Power	220-240V 50/60Hz
CRI	≥80
Lifetime L80B10	100 000 h
Body	aluminum profile
Body colour	anoda C-0, black, white
Operating temperature range	0 ... +35

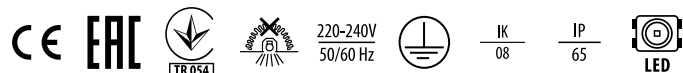


MEDICA 2.0

A modern IP65 rated luminaire designed to illuminate hospitals and clean room areas. The even uniform light distribution ensures normative lighting parameters. The hardened glass guarantees higher resistance to mechanical damage. The luminaire is equipped with ISO 3 certificate. The certificate confirms the compliance of our solution with the air purity classification standard used in clean rooms.



MEDICA 2.0 HE 600x600 p/t



power	19 - 38 [W]
Lumen luminaire	2700 - 5200 [lm]
Efficacy	137 - 142 [lm/W]
Colour temperature	3000, 4000
ULOR/DLOR	0/100
Power	220-240V 50/60Hz
CRI	90
Lifetime L80B10	78 000 h
Body	powder-painted steel sheet
Body colour	white
Operating temperature range	0 ... +35



LHL HOSPITAL, OSLO, NORWAY



URBINO LED S

A functionally optimised modern LED luminaire that complements the URBINO LED luminaire family in an environmentally responsible way with solutions for lower power and flux points.



URBINO LED S



power	4.5 - 74 [W]
Lumen luminaire	400 - 11350 [lm]
Efficacy	79 - 176 [lm/W]
Colour temperature	2200, 2700, 3000, 4000
ULOR/DLOR	0% / 100%
Power	220-240V 50/60Hz
Lifetime L90B10	100 000 h
Body	high pressure die-cast aluminum
Body colour	grey
Operating temperature range	-40 ... +40, -40 ... +50, -40 ... +55



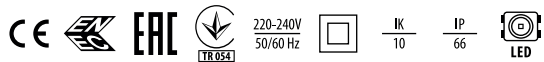
LHL HOSPITAL, OSLO, NORWAY



TRAFFIK LED



TRAFFIK LED



power	10 - 69 [W]
Lumen luminaire	1130 - 10200 [lm]
Efficacy	113 - 156 [lm/W]
Colour temperature	3000, 4000
ULOR/DLOR	0% / 100%
Power	220-240V 50/60Hz
Lifetime	(L75) 100 000 h (L90) 100 000 h
Body	high pressure die-cast aluminum
Body colour	grey
Operating temperature range	-40 ... +45 -40 ... +50 -40 ... +55



AVENIDA LED

Meet the new family of stylish park and city LUG Light Factory luminaires. The timeless form, excellent lighting parameters and three mounting solutions will allow you to comprehensively and without compromise light the most demanding space, giving it a classic character.

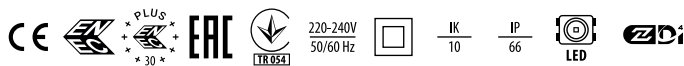
P - for mounting on pole Ø48-Ø76mm,
S - for mounting on arm Ø42mm,
C - for mounting on a steel cable Ø 6-15mm.

AVENIDA LED Moden hat



AVENIDA LED

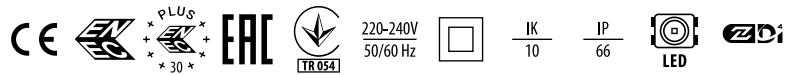
AVENIDA LED



power	19 - 34 [W]
Lumen luminaire	2350 - 4400 [lm]
Efficacy	124 - 132 [lm/W]
Colour temperature	3000, 4000
ULOR/DLOR	1,8/98,2, 1,9/98,1, 1,9/98,2,
Power	220-240V 50/60Hz
CRI	>80
Lifetime L80B10	100 000 h
Body	high pressure die-cast aluminum
Body colour	graphite, grey
Operating temperature range	-40 ... +50 -40 ... +55

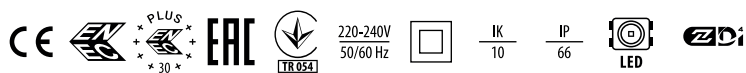


AVENIDA HERITAGE LED version C



power	19 - 34 [W]
Lumen luminaire	1750 - 4400 [lm]
Efficacy	92 - 132 [lm/W]
Colour temperature	2200, 2700, 3000, 4000
ULOR/DLOR	2,5/97,5, 2,6/97,4, 2,7/97,3
Power	220-240V 50/60Hz
CRI	>80
Lifetime L80B10	100 000 h
Body	high pressure die-cast aluminum
Body colour	graphite, grey
Operating temperature range	-40 ... +50 -40 ... +55

AVENIDA HERITAGE LED version S



power	19 - 34 [W]
Lumen luminaire	1750 - 4400 [lm]
Efficacy	92 - 132 [lm/W]
Colour temperature	2200, 2700, 3000, 4000
ULOR/DLOR	2,5/97,5, 2,6/97,4, 2,7/97,3
Power	220-240V 50/60Hz
CRI	>80
Lifetime L80B10	100 000 h
Body	high pressure die-cast aluminum
Body colour	graphite, grey
Operating temperature range	-40 ... +50 -40 ... +55



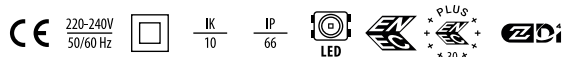


ARTERA LED

ARTERA LED is the perfect light for any urban space. Many installation types, uncompromising lighting parameters, a proprietary design harmonising with the diversity of urban DNA and additional customisation options make the clever ARTERA LED system a perfect solution wherever light contributes to the character of a space.



ARTERA LED



power	21 - 107 [W]
Lumen luminaire	2250 - 15700 [lm]
Efficacy	90 - 168 [lm/W]
Colour temperature	2200, 2700, 3000, 4000
ULOR/DLOR	0% / 100%
Power	220-240V 50/60Hz
CRI	>70
Lifetime L90B10	100 000 h
Body	high pressure die-cast aluminum
Body colour	graphite, grey
Operating temperature range	-40 ... +45 -40 ... +50

ARTERA LED dome mounting bracket 7



ARTERA LED dome C version



ARTERA LED dome mounting bracket L

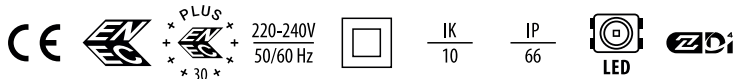


SAVA S version L



SAVA S version M

SAVA



power	12 - 164 [W]
Lumen luminaire	1150 - 25000 [lm]
Efficacy	96 - 190 [lm/W]
Colour temperature	2200, 2700, 3000, 4000
ULOR/DLOR	0% / 100%
Power	220-240V 50/60Hz
Lifetime L90B10	100 000 h
Body	high pressure die-cast aluminum
Body colour	graphite
Operating temperature range	-40 ... +45 -40 ... +50 -40 ... +55



CRUISER 2 LED

Cruiser 2 LED is a well-thought design luminaire that incorporates the cutting-edge lighting technology with functionality and modularity. The IF awarded design combined the high efficacy parameters with industrial minimalism.



CRUISER 2 LED



power	103 - 177 [W]
Lumen luminaire	10200 - 26050 [lm]
Efficacy	97 - 151 [lm/W]
Colour temperature	3000, 4000, 5700
ULOR/DLOR	0/100
Power	220-240V 50/60Hz
CRI	≥70, ≥80
Lifetime L80B10	100 000 h
Body	high pressure die-cast aluminum
Body colour	grey
Operating temperature range	-40 ... +35 -40 ... +40 -40 ... +45

CRUISER ARENA LED sports floodlight



power	395 - 399 [W]
Lumen luminaire	47100 - 62000 [lm]
Efficacy	118 - 157 [lm/W]
Colour temperature	4000, 5700
ULOR/DLOR	0/100
Power	220-240V 50/60Hz
CRI	≥70, ≥80
Lifetime L80B10	100 000 h
Body	high pressure die-cast aluminum
Body colour	grey
Operating temperature range	-40 ... +35



CRUISER 2 PLUS LED



power	204 - 219 [W]
Lumen luminaire	20000 - 31300 [lm]
Efficacy	98 - 150 [lm/W]
Colour temperature	3000, 4000, 5700
ULOR/DLOR	0/100
Power	220-240V 50/60Hz
CRI	≥70, ≥80
Lifetime L80B10	100 000 h
Body	high pressure die-cast aluminum
Body colour	grey
Operating temperature range	-40 ... +40 -40 ... +45





POWERLUG LED

Powerlug LED is a robust floodlight with the body made of die-cast aluminium and tempered glass diffuser. The IF awarded design combines minimalism in housing construction, the lateral surface wind exposed is only 0,163m², with high efficacy, more than 164lm/W. The IP65 and resistance to mechanical damage (IK09) level makes the position highly applicable, starting from heavy industry, warehouses, parking areas and finishing with facades.

POWERLUG LED



power	77 - 155 [W]
Lumen luminaire	11950 - 24400 [lm]
Efficacy	123 - 164 [lm/W]
Colour temperature	3000, 4000, 5700, 6500
ULOR/DLOR	0/100
Power	220-240V 50/60Hz
CRI	>70
Lifetime L80B10	100 000 h
Body	high pressure die-cast aluminum
Body colour	grey
Operating temperature range	-40 ... +35



POWERLUG MINI



power	25, 44, 54, 67 W
efficacy	up to 152 lm/W
luminaire flux	3800 – 9500 lm
colour temperature	4000, 5700 K
driver	ED



JYSK, SÄFFLE, SWEDEN

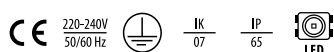


TRITON LED

TRITON LED - luminaire dedicated for interior lighting of large-area facilities such as warehouses, logistics centers, industrial facilities and production halls. Carefully designed solution designed for use in applications requiring single pendant mounting.



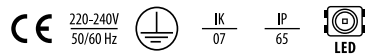
TRITON LED



power	72 - 130 [W]
Lumen luminaire	10550 - 20550 [lm]
Efficacy	140 - 168 [lm/W]
Colour temperature	4000
ULOR/DLOR	0/100
Power	220-240V 50/60Hz
CRI	≥70, ≥80
Lifetime L80B10	100 000 h
Body	high pressure die-cast aluminum, plastic
Body colour	grey
Operating temperature range	-30 ... +50



TRITON LED PLUS version



power	148 - 221 [W]
Lumen luminaire	22300 - 35650 [lm]
Efficacy	149 - 166 [lm/W]
Colour temperature	4000
ULOR/DLOR	0/100
Power	220-240V 50/60Hz
CRI	≥80
Lifetime L80B10	100 000 h
Body	high pressure die-cast aluminum, plastic
Body colour	grey
Operating temperature range	-25 ... +40 -30 ... +40 -30 ... +45



ATLANTYK 2.0 BASIC LED

220-240V
50/60 Hz
IK
07
IP
65
LED

power	18 - 99 [W]
Lumen luminaire	2900 - 16500 [lm]
Efficacy	132 - 181 [lm/W]
Colour temperature	4000
ULOR/DLOR	0/100, 10/90
Power	220-240V 50/60Hz
CRI	≥80
Lifetime L80B10	100 000 h 85 000 h (High Efficacy) 50 000h (High Lumen Output)
Body	polycarbonate
Body colour	graphite, light gray, red
Operating temperature range	-20 ... +30 -20 ... +35 -25 ... +30 -25 ... +35 0 ... +35



FOCUS MALL, ZIELONA GÓRA, POLAND



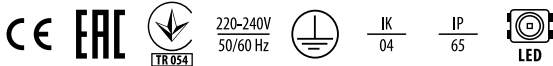
ICE CUBE

ICE CUBE 2.0 WALL

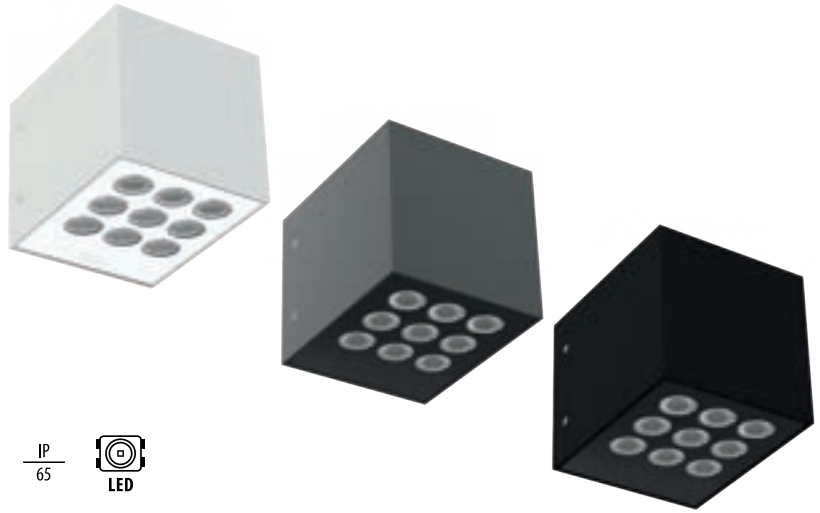
External architectural luminaire for installation on walls and facades in the form of a decorative wall lamp. The luminaire is available in two optical systems allowing for direct or indirect lighting. The carefully considered minimalist design and a wide range of beam angles allow for a broad application in external façade architecture



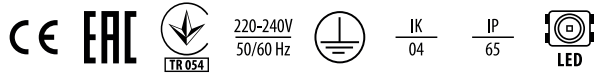
ICE CUBE 2.0 WALL



power	8 - 11.1 [W]
Lumen luminaire	280 - 1400 [lm]
Efficacy	26 - 128 [lm/W]
Colour temperature	2700, 3000, 4000, 5700, blue, green, red
ULOR/DLOR	100/100, 50/50
Power	220-240V 50/60Hz
CRI	≥80
Lifetime L90B10	50 000 h
Body	high pressure die-cast aluminum
Body colour	black, white, grey
Operating temperature range	-20 ... +45 -20 ... +50

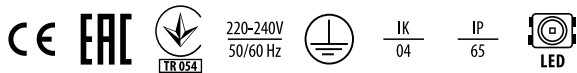


ICE CUBE 2.0 NT



power	8 - 11 W
efficacy	up to 119 lm/W
luminaire flux	320 - 1300 lm
ulor/dlor	0/100
angle beam	30°, 58°, 19x52°
CRI	≥ 80
driver	ED, DALI

ICE CUBE 2.0 R

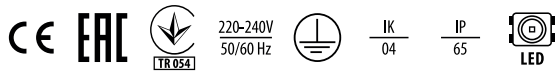


power	8 - 11.1 [W]
Lumen luminaire	280 - 1400 [lm]
Efficacy	26 - 128 [lm/W]
Colour temperature	2700, 3000, 4000, 5700, blue, green, red
ULOR/DLOR	100/100
Power	220-240V 50/60Hz
CRI	≥80
Lifetime L90B10	50 000 h
Body	high pressure die-cast aluminum
Body colour	black, white, grey
Operating temperature range	-20 ... +45





ARCHILINE LED



power	4.8 - 25.9 [W]
Lumen luminaire	270 - 1690 [lm]
Efficacy	54 - 65 [lm/W]
Colour temperature	4000
ULOR/DLOR	100/0
Power	24V DC
CRI	>80
Lifetime L90B10	50 000 h (ED) 43 000 h (DALI)
Body	aluminum profile
Body colour	white
Operating temperature range	-40 ... +45 -40 ... +50



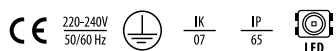
SKY PARK, ZIELONA GÓRA, POLAND



AVENIDA BOLLARD LED



AVENIDA BOLLARD LED



power	7.5 - 20.5 [W]
Lumen luminaire	630 - 1580 [lm]
Efficacy	77 - 93 [lm/W]
Colour temperature	3000, 4000
ULOR/DLOR	10/90
Power	220-240V 50/60Hz
CRI	>70
Lifetime L80B10	96 000 h
Body	high pressure die-cast aluminum
Body colour	graphite, grey
Operating temperature range	-20 ... +40 -20 ... +50 -40 ... +50





LUGTRACK SLIM LED

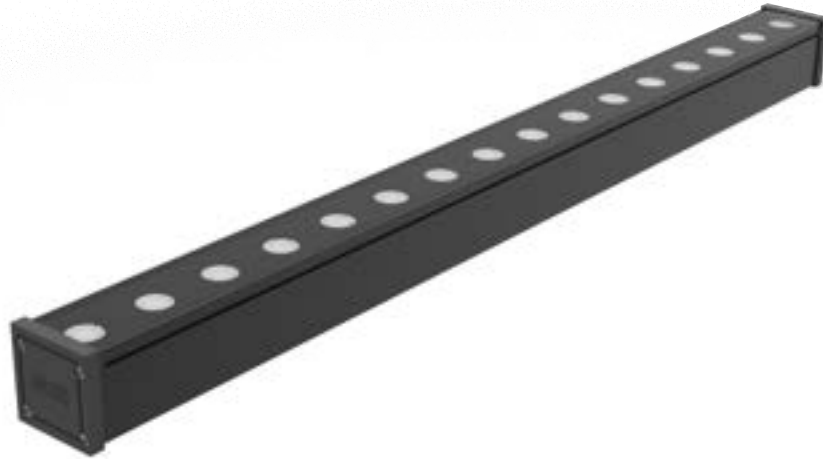


LUGTRACK SLIM LED



power	60 - 170 [W]
Lumen luminaire	9700 - 30200 [lm]
Efficacy	161 - 178 [lm/W]
Colour temperature	4000
ULOR/DLOR	0% / 100%, 97%/3%, 98%/2%
Power	220-240V 50/60Hz
CRI	≥80
Lifetime L80B10	100 000 h
Body	coated steel sheet
Body colour	white
Operating temperature range	0 ... +45 (0 ... +35)* 0 ... +50 (0 ... +40)*





MODENA 2.0 SL LED



power	10 - 34 [W]
Lumen luminaire	1100 - 5200 [lm]
Efficacy	110 - 153 [lm/W]
Colour temperature	3000, 4000
ULOR/DLOR	100/0
Power	220-240V 50/60Hz
CRI	≥80
Lifetime L90B10	100 000 h
Body	extruded aluminium, toughened glass, high pressure die-cast aluminum
Body colour	black anode B35
Operating temperature range	max +45°C max +50°C



HOTEL EUROPEJSKI, WARSZAWA, POLAND



PUMA

PUMA - professional and powerful floodlight designed to meet the most stringent lighting requirements in sport facilities to ensure the best perception of the show by both onsite spectators and TV viewers. The functional mounting bracket, wide choice of lumen package together with dedicated optical systems broadens the applicability to airports, seaports and heavy industry areas.

power	468 - 918 [W]
Lumen luminaire	170400 - 258800 [lm]
Efficacy	92 - 140 [lm/W]
Colour temperature	4000, 5700
ULOR/DLOR	0/100
Power	220-240V 50/60Hz
CRI	70, 80, 90
Lifetime L90B10	100 000 h
Body	aluminum
Body colour	aluminium
Operating temperature range	-40 ... +50





power	468 [W]
Lumen luminaire	42600 - 129400 [lm]
Efficacy	91 - 141 [lm/W]
Colour temperature	4000, 5700
ULOR/DLOR	0/100
Power	220-240V 50/60Hz
CRI	70, 80, 90
Lifetime L90B10	100 000 h
Body	aluminum
Body colour	aluminium
Operating temperature range	-40 ... +50



power	468 - 918 [W]
Lumen luminaire	42600 - 129400 [lm]
Efficacy	91 - 141 [lm/W]
Colour temperature	4000, 5700
ULOR/DLOR	0/100
Power	220-240V 50/60Hz
CRI	70, 80, 90
Lifetime L90B10	100 000 h
Body	high pressure die-cast aluminum
Body colour	aluminium
Operating temperature range	-40 ... +50



power	918 - 1844 [W]
Lumen luminaire	85400 - 258800 [lm]
Efficacy	91 - 141 [lm/W]
Colour temperature	4000, 5700
ULOR/DLOR	0/100
Power	220-240V 50/60Hz
CRI	70, 80, 90
Lifetime L90B10	100 000 h
Body	high pressure die-cast aluminum
Body colour	aluminium
Operating temperature range	-40 ... +50



LUG Light Factory SP. z o.o.
ul. Gorzowska 11
65-127 Zielona Góra
