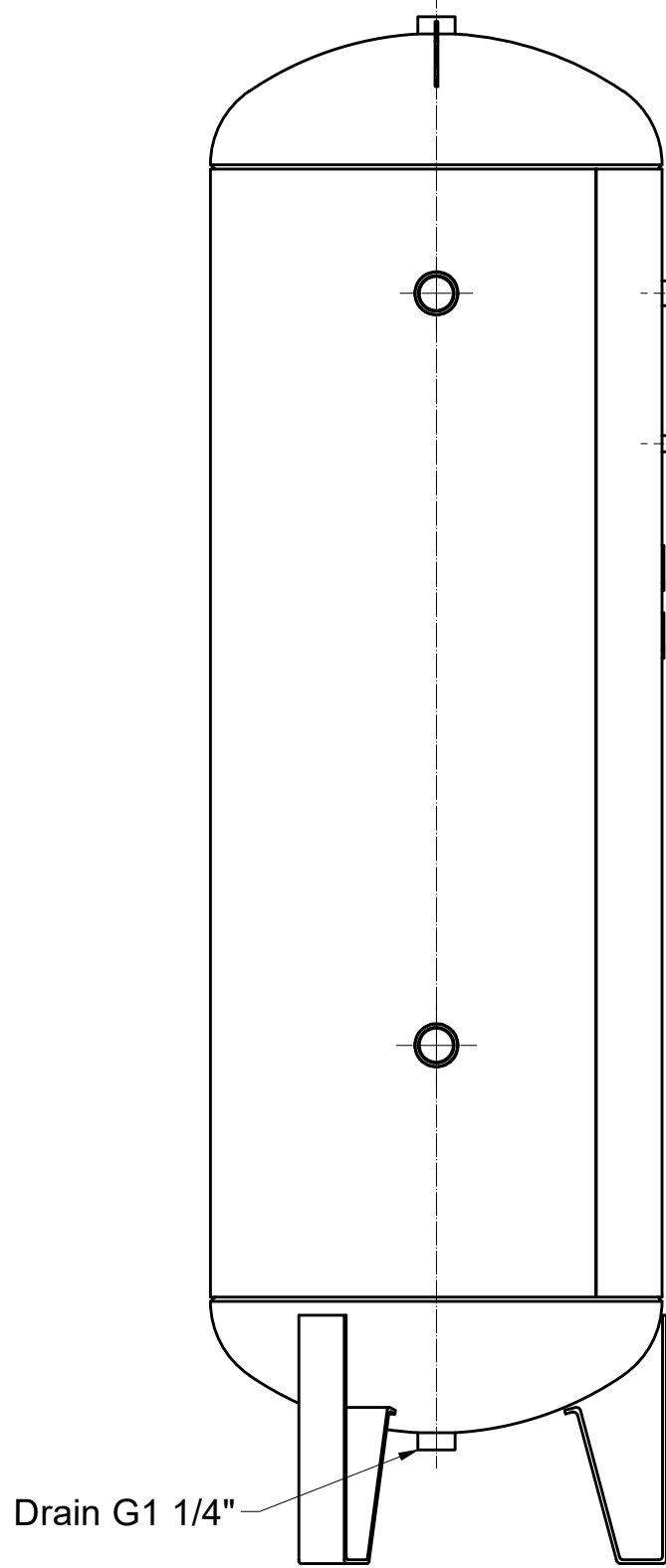
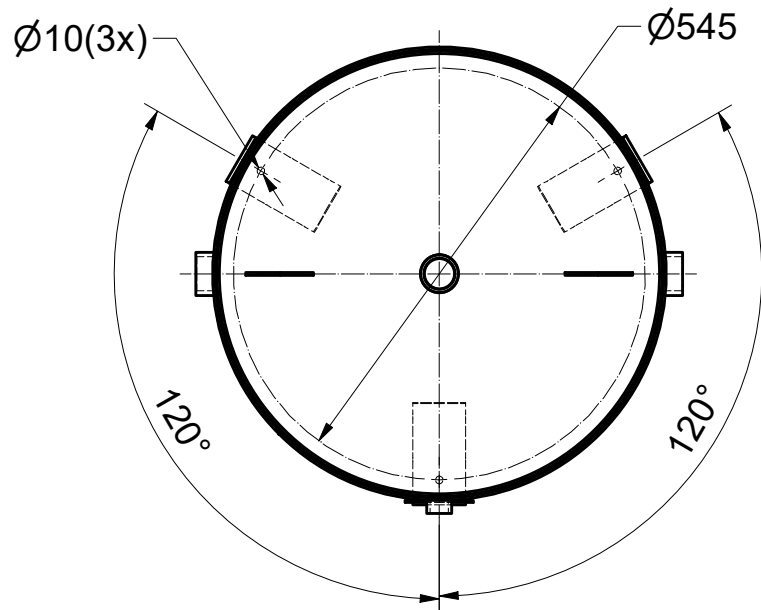
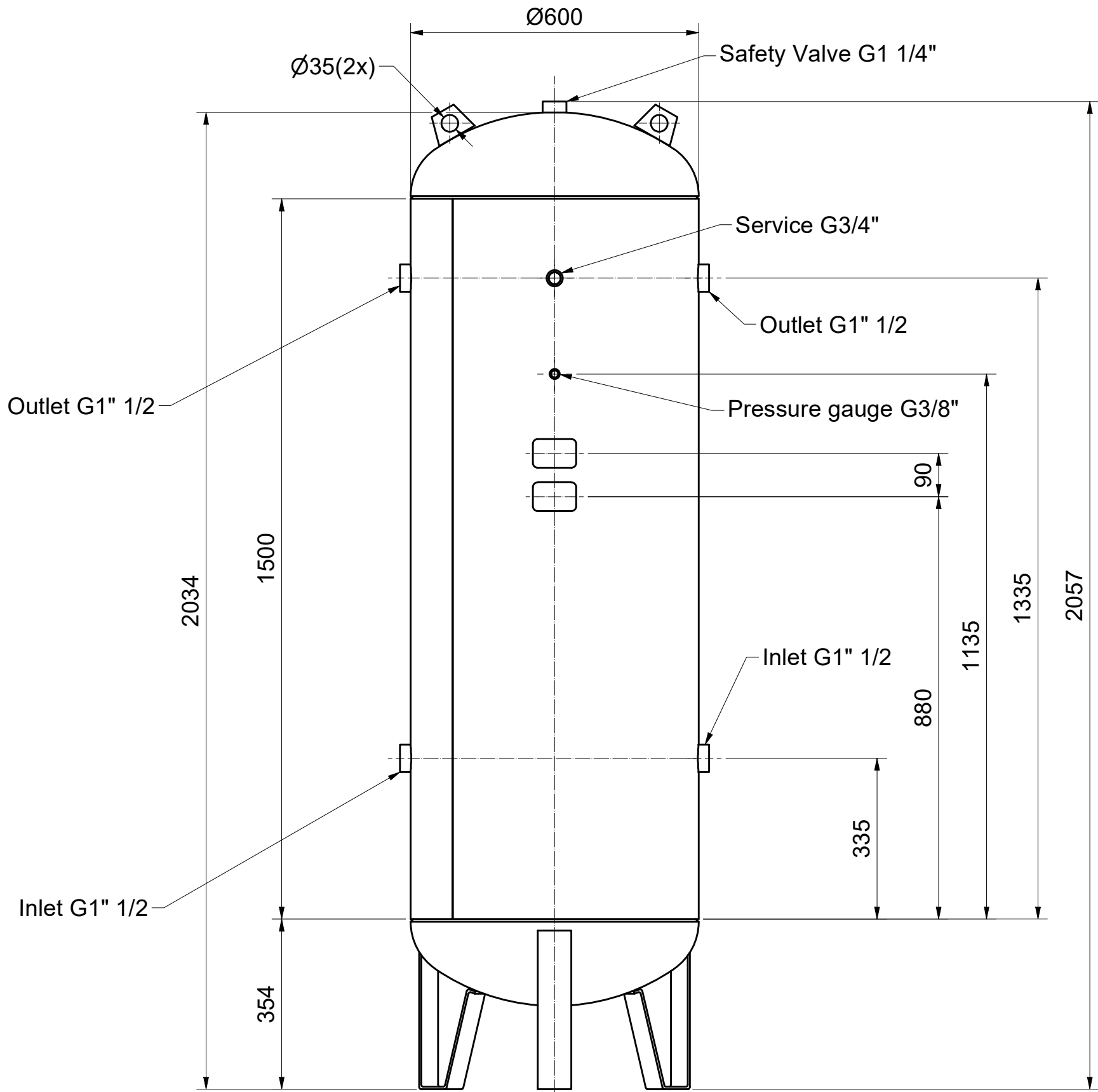


All materials supplied are in compliance with the requirements of the List of Prohibited Substances

CONFIDENTIAL:
This document is our property and shall not without our permission be altered, copied, used for manufacturing or communicated to any other person or company.

1				
Ed	Position	Modified from	Date	Intr./Appd.



- Notes:-
- Suited for oxygen use according to specification 9828 5303 00.
 - External treatment: painted RAL 7047.
 - Internal treatment: VITROFLEX coating.
 - Weight : 130 kg.

Designed, built, tested, certified and marked according European Directive: 2014/68/EU:	CAT IV
Medium	OXYGEN
Design pressure	11 bar
Min. Design temperature	-10 °C
Max. Design temperature	120 °C
Nominal Diameter (DN)	600
Volume	500 L
Test pressure	16.5 bar
Testing according SQA plan:	Sample test: <input type="text"/> 100% test: <input checked="" type="checkbox"/>

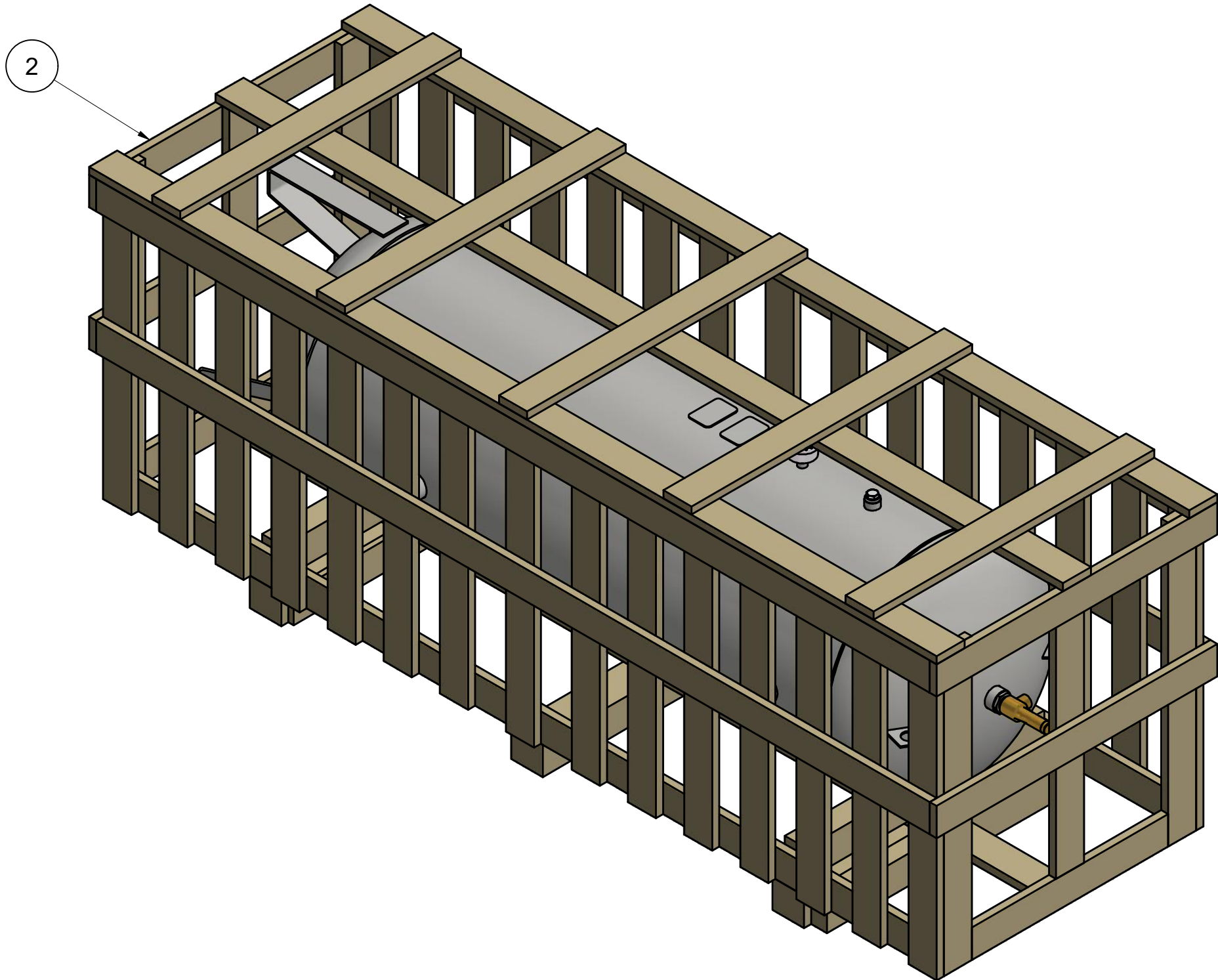
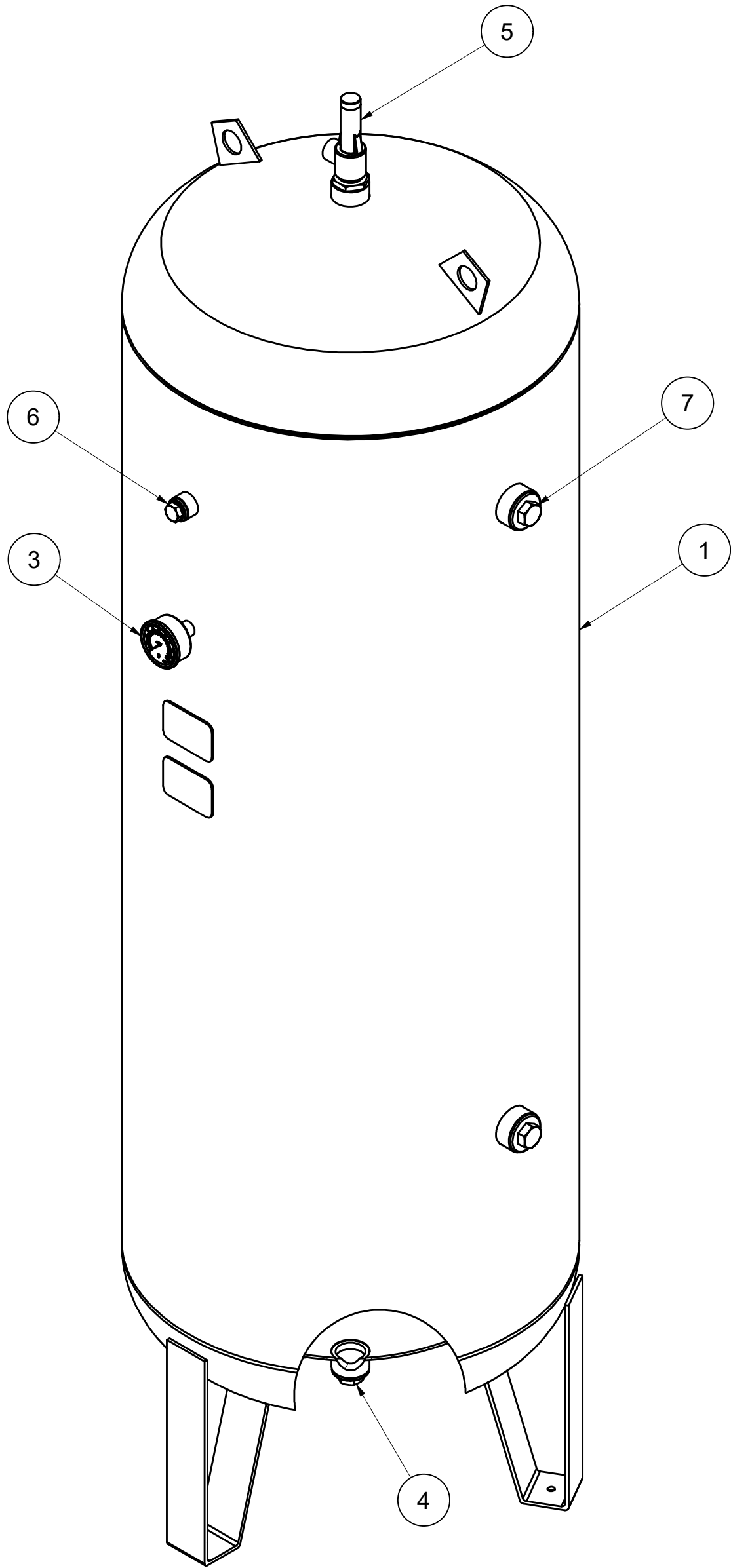
Tolerances, if not indicated, according to:					
ATLAS COPCO STANDARD CLASS					
Name	DIMENS. DRWG		LV500 OXYGEN		Confidentiality Class acc. to 1102 K
Material	See Drawing		See Drawing		Confidential
Treatment	See Drawing		See Drawing		INV
	Scale	1 : \$0	Family	A2	Compare
	Drawn by	INEEXTVIP	Blank nr.		Replaces
STATUS	Version Drwg	Blank wt	Kg	Finl wt.	130.000 kg
	Des checked.	Prod checked.	Approved.	Date	17/06/2021
Parent 3D model		Ed . Version 3D		Designation	
1629240201-M1		1		Sheet 1 / 1	
Pending		1629240201-01		Drawing owner	
				API	

All materials supplied are in compliance with the requirements of the List of Prohibited Substances

CONFIDENTIAL:

This document is our property and shall not without our permission be altered, copied, used for manufacturing or communicated to any other person or company.

1				
Ed	Position	Modified from	Date	Intr./Appd.



- Notes:-
- Suited for oxygen use according to specification 9828 5303 00.
 - Shipping weight : 169 kg.
 - Metal plugs to seal vessel from contamination during transport.

Parts List						
Pos	Qty	Partnumber	R/S	Name	Material	Description
1	1	1629240201	R	VESSEL AIR	See Drawing	LV500 OXYGEN
2	1	1629240221	R	PACKAGING	See Drawing	LV270 OXYGEN
3	1	0872100132	S	GAUGE PRESS	See Standards	PRESSURE GAUGE
4	1	0686420900	S	PLUG	See Standards	
5	1	0832100273	S	SAFETY VALVE	See Standards	
6	1	0686371662	S	PLUG	SEE STANDARDS	
7	4	0686421000	S	PLUG	See Standards	
Tolerances, if not indicated, according to:						
ATLAS COPCO STANDARD CLASS						
Name VESSEL AIR LV500 OXYGEN ASSEMBLY					Confidentiality Class acc. to 1102 K	
Material See Drawing					Confidential	
Treatment Not Applicable					INV	
		Scale 1 : 5	Family		A2 Compare	Drawing owner API
		Drawn by INEEXTVIP	Blank nr.		Replaces	
STATUS		Version Drwg	Blank wt	Kg	Fin. wt. 169.000 kg	Designation Sheet 1 / 1
Parent 3D model		Ed. Version 3D	Des checked.	Prod checked.	Approved.	Date 17/06/2021
Pending		1629240211-01				