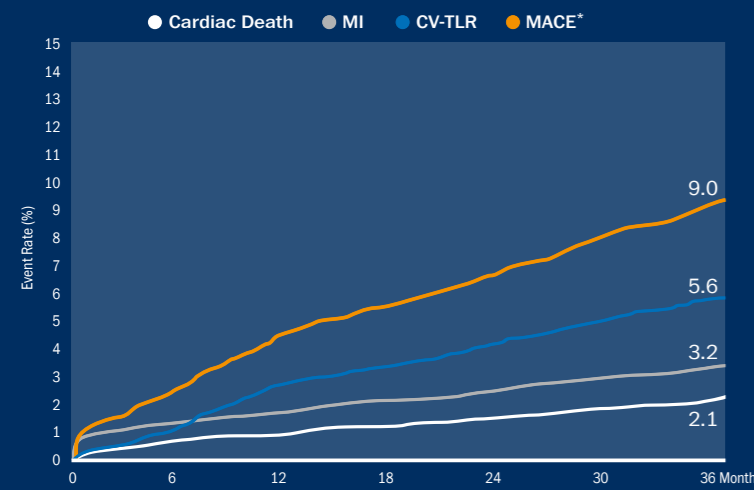


Excellent Long Term Safety and Efficacy⁴

Sustained safety and efficacy for at least 3 years in 5400 real-world patients⁵

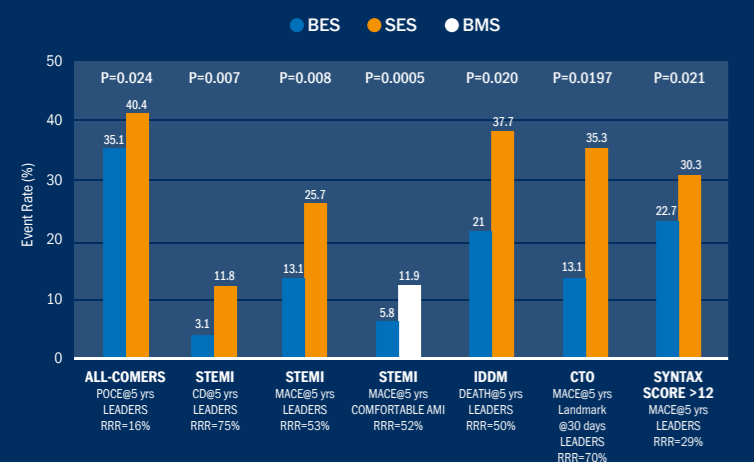


A very large international prospective registry⁵ of the BioMatrix™ Family of stents in unselected patients demonstrates:

- ✓ Low cardiac death rate at 3 years (2.1%)
- ✓ Low myocardial infarction rate at 3 years (3.2%)
- ✓ Low target vessel revascularization rate at 3 years (5.6%)
- ✓ Low composite MACE rate at 3 years (9%)

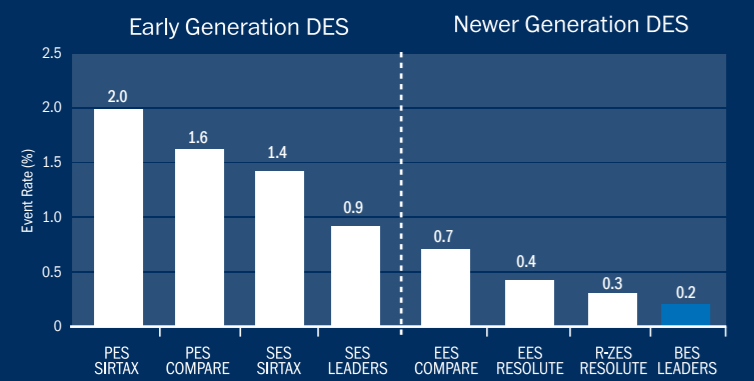
* MACE: A Composite of cardiac death, MI, or clinically indicated TVR

Superior long term outcomes in complex real-world patients^{6,7,8}



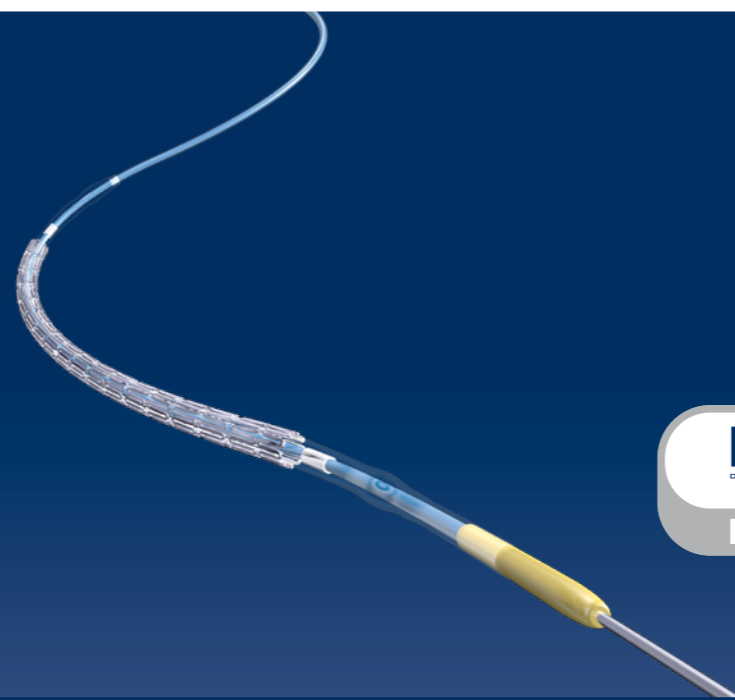
POCE: Composition of all death, all MI, all revascularization
 MACE: Composite of cardiac death, MI (target vessel MI in COMFORTABLE AMI study), c-TVR
 c-TVR: Clinically indicated Target Vessel Revascularization
 CD: Cardiac Death
 STEM: ST-elevated Myocardial Infarction
 IDDM: Insulin-dependent Diabetes Mellitus
 CTO: Chronic Total Occlusion
 RRR: Relative Risk Reduction

Lowest very late stent thrombosis in all-comer trials⁹



Rates of very late definite stent thrombosis in all-comer randomized trials comparing DES at 3 years of follow-up⁹

Over 20'300 patients have been treated with BioMatrix Family stents in various randomized controlled trials



BIOMATRIX·α
DRUG ELUTING CORONARY STENT SYSTEM
 alpha

Power to Heal

Ordering Information

Stent Diameter (mm)	Stent Length (mm)						
	9	14	19	24	29	33	36
2.25	BMX6-2209	BMX6-2214	BMX6-2219	BMX6-2224	BMX6-2229		
2.50	BMX6-2509	BMX6-2514	BMX6-2519	BMX6-2524	BMX6-2529	BMX6-2533	BMX6-2536
2.75	BMX6-2709	BMX6-2714	BMX6-2719	BMX6-2724	BMX6-2729	BMX6-2733	BMX6-2736
3.00	BMX6-3009	BMX6-3014	BMX6-3019	BMX6-3024	BMX6-3029	BMX6-3033	BMX6-3036
3.50	BMX6-3509	BMX6-3514	BMX6-3519	BMX6-3524	BMX6-3529	BMX6-3533	BMX6-3536
4.00	BMX6-4009	BMX6-4014	BMX6-4019	BMX6-4024	BMX6-4029		

- Biosensors International internal bench testing performed on 3.0 mm stents. Data on file at Biosensors International
- Percentage change in stent length after applying 5N compression force longitudinally
- Recoil measured as percentage change in diameter at RBP
- This data is related to BioMatrix Family, which has the exact same coating and equivalent pharmacokinetics as BioMatrix Alpha
- Hildick-Smith D et al. EuroPCR 2015
- Windecker S et al. Lancet. 2008; 372:1163-73
- Serruys PW, et al. JACC Cardiovasc Interv. 2013; 6:777-89
- Räber L, et al. Circ Cardiovasc Interv. 2014; 7:355-64
- Stefanini G, Windecker S. Circulation Card Intv 2012; 5:332-5
- De Cock D, et al. Cardiovascular Imaging. 2014; 15:900-09
- Lüscher TF, et al. Circulation. 2007; 115:1051-58
- Farb A, et al. Circulation. 2003; 108:1701-06
- Joner M, et al. J Am Coll Cardiol. 2006; 48:193-202
- Gladden LB. J Physiol. 2004; 558(1):5-30
- Ghani, QP, et al. Methods in Enzymology. 2004; 381(36):565-75
- Granada JF, SOLACI-CACI 2014



BioMatrix Alpha™ drug eluting stent system is CE approved.

CAUTION: The law restricts these devices to sale by or on the order of a physician. Indications, contraindications, warnings and instructions for use can be found in the product labeling supplied with each device.

BioMatrix NeoFlex, BioMatrix Flex, Juno, Quadrature Link, Biolimus A9 and BA9 are trademarks or registered trademarks of Biosensors International Group, Ltd. All cited trademarks are the property of their respective owners.

Not available for sale in the United States and certain other countries.
 © 2016. Biosensors International Group, Ltd. All rights reserved.



+ 52 (81) 1937.1704
 + 52 (81) 1478.4838

avant.medical@gmail.com
 avantmed.mx



BIOMATRIX·α
DRUG ELUTING CORONARY STENT SYSTEM
 alpha

Power to Heal

