

TISSUE PROCESSING

Histo-Pro 200 Vacuum Tissue Processor

IVD CE



The Instrument

Histo-Pro 200 set a new standard in vacuum tissue processing.

58 } Its unique reagent monitoring and management delivers significant reagent cost savings.

58 } Superior process control, functional design, and precise temperature control ensure optimum specimen quality.

519 } An active extraction process ensures efficient reagents quality, which extends paraffin life, improves tissue quality, and reduces operating costs.

53 } User safety is enhanced by a fully enclosed fume system and by the improved reagent bottle and cabinet design to prevent the risk of contact and reagent carry-over.

Through the control panel all the operating parameters like programs, temperatures, vacuum and levels can be freely modified.

3 different reagent level according to sample quantity processed.

Histo-Pro 200 is available with Automatic fill/drain reagent system to prevent the risks of reagents contact. (Optional)

Display and Software

54 } Large Touch-screen color Liquid Crystal Display (LCD)
User-friendly, smart icons software.
Alarm system for wrong operation and troubles

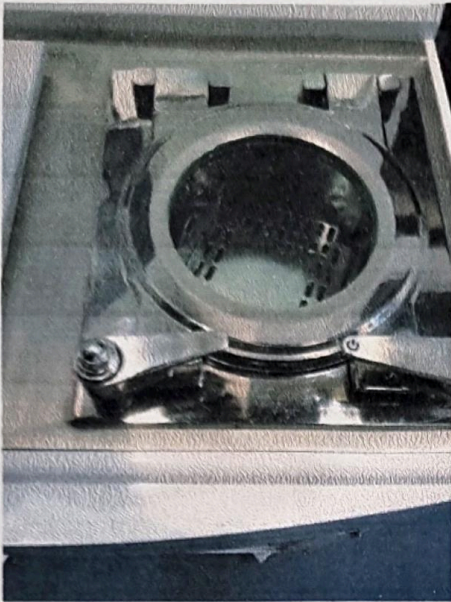
55 } Multiple specimen protection system.

The operator can set the different programs varied in duration, temperature.
Freely customized programs for the cleaning of the reagents retort.



10 conform extes
Catalog pag. 10

TISSUE PROCESSING



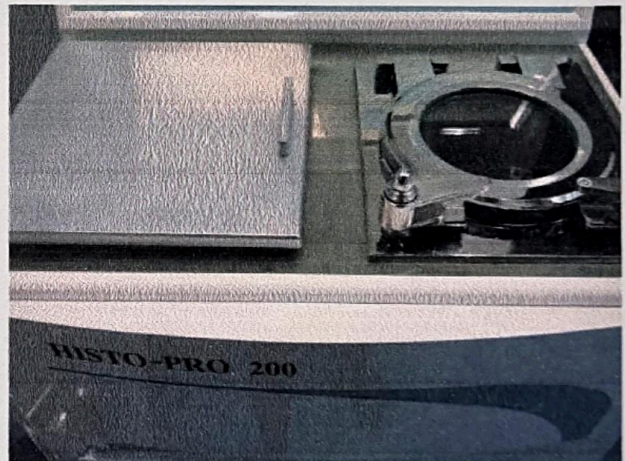
Capacities

- Capacity about 200 cassettes *S1*
- 20 programs that consist of up to 10 reagent and 3 paraffin wax steps *y59*
- Time per program step: 0 to 99 hours, 59 minutes
- Up to 200 cassettes can be processed
- Wax clean program
- 10 reagent bottles
- 3 wax baths a temperature: 50°C - 65°C *S12*
- 2 cleaning solution bottles
- 1 condensate bottle *y52*
- 1 Carbon filter bottle *y52*
- Maximum bottle volume: 4.0 lt *S13; S14*

Retort

- Reagent volume: 6.1 Lt
- Temperature (paraffin): 50°C - 65°C
- Temperature (reagents): ambient or 35°C
- Temperature (cleaning reagents): 50°C - 65°C
- Temperature accuracy: + 1°C
- Filling time: up to 5 min
- Drain time: up to 5 min
- Impregnation vacuum: -70 kPa (g)
- Impregnation pressure: 35 kPa (g)
- Fill vacuum: -70 kPa (g)
- Drain pressure: 35 kPa (g)

S1



Technical Data

- Nominal voltage: AC 220 V
- Nominal frequency: 60 Hz
- Main fuses: 10 A
- Nominal power: 1500 V/A
- Dry weight, unpacked: approx. 100 kg
- Weight, packed: 120 kg
- Operating temperature range: 15 °C to 35 °C
- Relative humidity: 10 to 80 %
- Recirculation (pump in/out): ON/OFF
- Time between cycles: 15 min

Product

Histo-Pro 200 Vacuum Tissue Processor

Size

Unit

Packaging

1 pc

Code

HistoPro200

Conform extras
www.histoline.com

Catalog pag. 11



Programmable Alarm System Management Saving cost Top Quality Video (<https://www.youtube.com/watch?v=hpDRTNne54Q>)

Product Features

The **Pro200 tissue processor** is designed for smart paraffin infiltration of tissue. Straight forward routine user operations and a variety of **'Smart'** features, such as quick start for commonly used programs, improve specimen quality and laboratory economy.

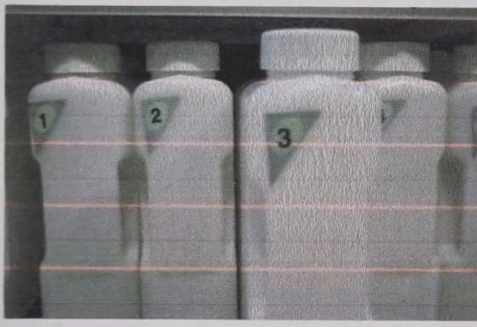
Ergonomic, attractive and modern design features rounded corners. Start automates the start of **most common programs** and allows the technician to perform scheduling functions, such as defining a delayed end time by extending certain program steps.

Biopsy and standard protocols are prestored to shorten turnaround time and reduce the need to level workflow in the laboratory.

Simple design and smart use



Full process control and saving coast



Real-time process data about key instrument settings, such as **current filling status**, temperature and pressure inside the retort, paraffin bath temperature, as well as status of the paraffin bath and retort heating systems, is always available.

An active extraction process ensures efficient reagents quality, which extends paraffin life, improves tissue quality, and reduces operating costs.

User safety is enhanced by a **fully enclosed fume system** and by the improved reagent bottle and cabinet design to prevent the risk of contact and **reagent carry-over**.

High quality specimens

Magnetic stirrer – for gentle circulation of the reagents, thus ensuring a uniform reagent temperature.

Programmable end time for infiltration programs. Three-step drainage of the retort (adjustable) to reduce reagent displacement. **Infiltration process at ambient pressure, with pressure, vacuum, or a combination of both.**

57 [↑] Alarm system for wrong operation and troubles. **Multiple specimen protection system.**

Large Touch-screen color Liquid Crystal Display (LCD).
User-friendly, smart icons software.



Resources



Automatic tissue processor choose guideline (https://www.histoline.com/sites/default/files/brochure/Guide%20to%20choosing%20tissue%20processors_ENG.pdf)

Histoline web page