

Client Name: HEXING TECHNOLOGIES EUROPE S.R.L.  
Client Address: SAT GIARMATA, COMUNA GIARMATA, DJ 691 KM 8 + 775 M DREAPTA, JUDET TIMIS, ROMANIA.

Sample Name: Electricity meter  
Tested Basic Model No.: HXE110 EU  
Tested Extended Model No.: HXE310 EU、HXF300 EU

The above sample(s) and information were provided by the client.

-----

SGS Job No.: NBP24-003405  
Sample Receiving Date: Jun 13, 2024  
Verification Period: Jun 13, 2024 ~ Jul 05, 2024  
Verification Requested: With reference to RoHS Directive (EU) 2015/863 amending 2011/65/EU.  
Verification Method(s): Please refer to next page(s).  
Verification Result(s): Please refer to next page(s).

**Test Result Summary:**

Test Items	Conclusion
EU RoHS Directive (EU) 2015/863 amending Annex II to Directive 2011/65/EU - Lead, Mercury, Cadmium, Hexavalent chromium, Polybrominated biphenyls (PBB), Polybrominated diphenyl ethers (PBDE), Bis(2-ethylhexyl) phthalate (DEHP), Butyl benzyl phthalate (BBP), Dibutyl phthalate (DBP) and Diisobutyl phthalate (DIBP)	Pass

Signed for and on behalf of  
SGS-CSTC Standards Technical Services Co., Ltd. Ningbo Branch

*Damon Li*

Damon Li  
Approved Signatory

scan to see the report



2AB50049



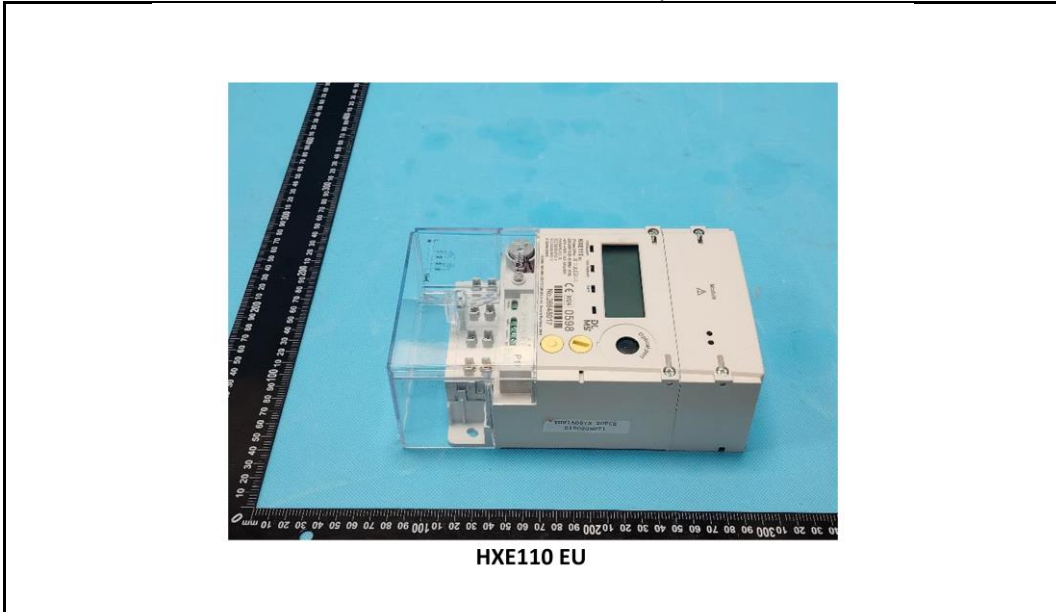
SGS-CSTC Standards Technical Services Co., Ltd.  
Ningbo Branch Chemical Laboratory

Unless otherwise agreed in writing, this document is issued by the Company subject to its General Conditions of Service printed overleaf, available on request or accessible at <http://www.sgs.com/en/Terms-and-Conditions.aspx> and, for electronic format documents, subject to Terms and Conditions for Electronic Documents at <http://www.sgs.com/en/Terms-and-Conditions/Terms-e-Document.aspx>. Attention is drawn to the limitation of liability, indemnification and jurisdiction issues defined therein. Any holder of this document is advised that information contained hereon reflects the Company's findings at the time of its intervention only and within the limits of Client's instructions, if any. The Company's sole responsibility is to its Client and this document does not exonerate parties to a transaction from exercising all their rights and obligations under the transaction documents. This document cannot be reproduced except in full, without prior written approval of the Company. Any unauthorized alteration, forgery or falsification of the content or appearance of this document is unlawful and offenders may be prosecuted to the fullest extent of the law. Unless otherwise stated the results shown in this test report refer only to the sample(s) tested.  
**Attention: To check the authenticity of testing /inspection report & certificate, please contact us at telephone: (86-755) 8307 1443, or email: CN.Doccheck@sgs.com**

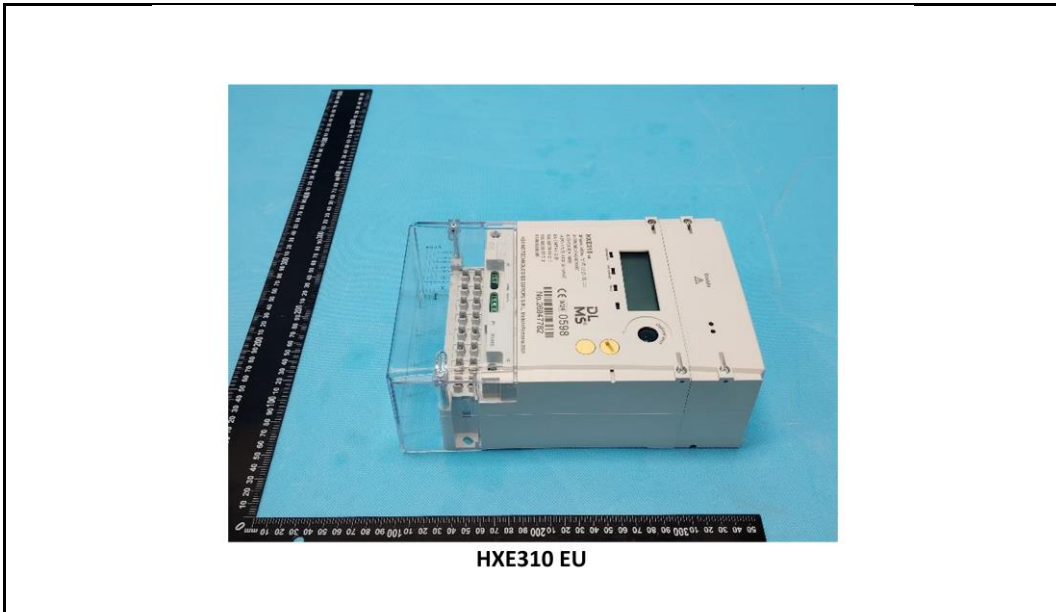
No.1177, Lingyun Road, Hi-Tech Zone, Ningbo, Zhejiang, China 315040 t E&E (86-574)89070249  
中国·浙江·宁波高新区凌云路1177号 邮编: 315040 t HL (86-574)89070271 t ML (86-574)89070242 sgs.china@sgs.com

[www.sgsgroup.com.cn](http://www.sgsgroup.com.cn)

Photo of Submitted Sample



HXE110 EU

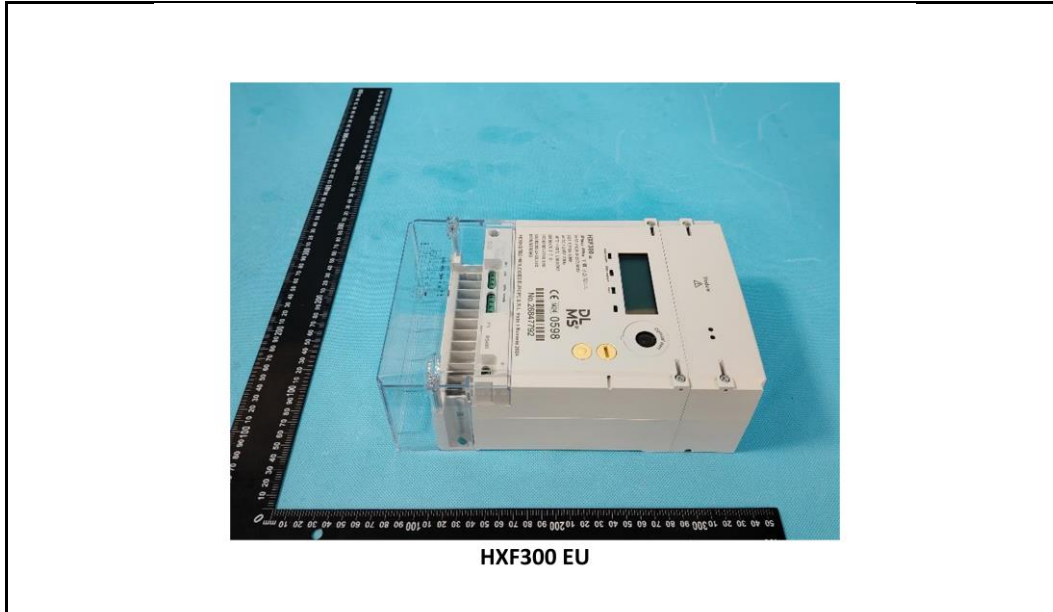


HXE310 EU



Unless otherwise agreed in writing, this document is issued by the Company subject to its General Conditions of Service printed overleaf, available on request or accessible at <http://www.sgs.com/en/Terms-and-Conditions.aspx> and, for electronic format documents, subject to Terms and Conditions for Electronic Documents at <http://www.sgs.com/en/Terms-and-Conditions/Terms-e-Document.aspx>. Attention is drawn to the limitation of liability, indemnification and jurisdiction issues defined therein. Any holder of this document is advised that information contained hereon reflects the Company's findings at the time of its intervention only and within the limits of Client's instructions, if any. The Company's sole responsibility is to its Client and this document does not exonerate parties to a transaction from exercising all their rights and obligations under the transaction documents. This document cannot be reproduced except in full, without prior written approval of the Company. Any unauthorized alteration, forgery or falsification of the content or appearance of this document is unlawful and offenders may be prosecuted to the fullest extent of the law. Unless otherwise stated the results shown in this test report refer only to the sample(s) tested.

Attention: To check the authenticity of testing / inspection report & certificate, please contact us at telephone: (86-755) 8307 1443, or email: [CN.Doccheck@sgs.com](mailto:CN.Doccheck@sgs.com)



**Verification Method(s):**

1. With reference to IEC 62321-2:2021, disassembly and disjointment were performed for the submitted samples.
2. With reference to IEC 62321-1:2013, tests were performed for the samples indicated by the photos in this report.
  - (1) With reference to IEC 62321-3-1:2013, screening by EDXRF spectroscopy.
  - (2) Wet chemical test method: With reference to IEC 62321-4:2013+A1:2017, IEC62321-5:2013, IEC 62321-7-1:2015, IEC 62321-7-2:2017, IEC 62321-12:2023, IEC 62321-6:2015 and IEC62321-8:2017 , analyzed by ICP-OES,UV-Vis and GC-MS.



Unless otherwise agreed in writing, this document is issued by the Company subject to its General Conditions of Service printed overleaf, available on request or accessible at <http://www.sgs.com/en/Terms-and-Conditions.aspx> and, for electronic format documents, subject to Terms and Conditions for Electronic Documents at <http://www.sgs.com/en/Terms-and-Conditions/Terms-e-Document.aspx>. Attention is drawn to the limitation of liability, indemnification and jurisdiction issues defined therein. Any holder of this document is advised that information contained hereon reflects the Company's findings at the time of its intervention only and within the limits of Client's instructions, if any. The Company's sole responsibility is to its Client and this document does not exonerate parties to a transaction from exercising all their rights and obligations under the transaction documents. This document cannot be reproduced except in full, without prior written approval of the Company. Any unauthorized alteration, forgery or falsification of the content or appearance of this document is unlawful and offenders may be prosecuted to the fullest extent of the law. Unless otherwise stated the results shown in this test report refer only to the sample(s) tested.

**Attention: To check the authenticity of testing /inspection report & certificate, please contact us at telephone: (86-755) 8307 1443, or email: CN.Doccheck@sgs.com**

**Verification Part Description:**

SN ID	Sample No.	SGS Sample ID	Description
SN1	A1	NGB24-0032712-0001.C001	HXE110 EU-Transparent plastic lump
SN2	A2	NGB24-0032712-0001.C002	HXE110 EU-Light gray plastic shell
SN3	A3	NGB24-0032712-0001.C003	HXE110 EU-Transparent plastic shell
SN4	A4	NGB24-0032712-0001.C004	HXE110 EU-Silvery metal screw
SN5	A5	NGB24-0032712-0001.C005	HXE110 EU-Beige rubber lump
SN6	A6	NGB24-0032712-0001.C006	HXE110 EU-Gray rubber lump
SN7	A7	NGB24-0032712-0001.C007	HXE110 EU-Beige rubber lump
SN8	A8	NGB24-0032712-0001.C008	HXE110 EU-Gray plastic shell
SN9	A9	NGB24-0032712-0001.C009	HXE110 EU-Silvery metal ring
SN10	A10	NGB24-0032712-0001.C010	HXE110 EU-Yellow plastic bracket
SN11	A11	NGB24-0032712-0001.C011	HXE110 EU-Semitransparent rubber ring
SN12	A12	NGB24-0032712-0001.C012	HXE110 EU-Black plastic lump
SN13	A13	NGB24-0032712-0001.C013	HXE110 EU-Silvery metal pin
SN14	A14	NGB24-0032712-0001.C014	HXE110 EU-Gray digital display module
SN15	A15	NGB24-0032712-0001.C015	HXE110 EU-Transparent plastic bracket
SN16	A16	NGB24-0032712-0001.C016	HXE110 EU-Semitransparent plastic piece
SN17	A17	NGB24-0032712-0001.C017	HXE110 EU-White plastic piece
SN18	A18	NGB24-0032712-0001.C018	HXE110 EU-Black rubber lump
SN19	A19	NGB24-0032712-0001.C019	HXE110 EU-Black plastic shell
SN20	A20	NGB24-0032712-0001.C020	HXE110 EU-Black rubber lump
SN21	A21	NGB24-0032712-0001.C021	HXE110 EU-Black plastic shell
SN22	A22	NGB24-0032712-0001.C022	HXE110 EU-Black plastic shell
SN23	A23	NGB24-0032712-0001.C023	HXE110 EU-Black rubber lump
SN24	A24	NGB24-0032712-0001.C024	HXE110 EU-Black plastic shell
SN25	A25	NGB24-0032712-0001.C025	HXE110 EU-Black rubber lump
SN26	A26	NGB24-0032712-0001.C026	HXE110 EU-Beige plastic lump
SN27	A27	NGB24-0032712-0001.C027	HXE110 EU-Blue capacitor body
SN28	A28	NGB24-0032712-0001.C028	HXE110 EU-Blue capacitor body
SN29	A29	NGB24-0032712-0001.C029	HXE110 EU-Orange capacitor body
SN30	A30	NGB24-0032712-0001.C030	HXE110 EU-Yellow solid adhesive
SN31	A31	NGB24-0032712-0001.C031	HXE110 EU-Yellow plastic shell
SN32	A32	NGB24-0032712-0001.C032	HXE110 EU-Black plastic lump
SN33	A33	NGB24-0032712-0001.C033	HXE110 EU-Blue capacitor body
SN34	A34	NGB24-0032712-0001.C034	HXE110 EU-Green plastic lump
SN35	A35	NGB24-0032712-0001.C035	HXE110 EU-Silvery metal lump
SN36	A36	NGB24-0032712-0001.C036	HXE110 EU-Black plastic sheath
SN37	A37	NGB24-0032712-0001.C037	HXE110 EU-Semitransparent plastic pipe
SN38	A38	NGB24-0032712-0001.C038	HXE110 EU-Black led light
SN39	A39	NGB24-0032712-0001.C039	HXE110 EU-Blue led light
SN40	A40	NGB24-0032712-0001.C040	HXE110 EU-Black plastic bracket
SN41	A41	NGB24-0032712-0001.C041	HXE110 EU-Yellow plastic adhesive tape
SN42	A42	NGB24-0032712-0001.C042	HXE110 EU-Silvery metal bracket
SN43	A43	NGB24-0032712-0001.C043	HXE110 EU-Transparent double faced adhesive
SN44	A44	NGB24-0032712-0001.C044	HXE110 EU-Black coating



Unless otherwise agreed in writing, this document is issued by the Company subject to its General Conditions of Service printed overleaf, available on request or accessible at <http://www.sgs.com/en/Terms-and-Conditions.aspx> and, for electronic format documents, subject to Terms and Conditions for Electronic Documents at <http://www.sgs.com/en/Terms-and-Conditions/Terms-e-Document.aspx>. Attention is drawn to the limitation of liability, indemnification and jurisdiction issues defined therein. Any holder of this document is advised that information contained hereon reflects the Company's findings at the time of its intervention only and within the limits of Client's instructions, if any. The Company's sole responsibility is to its Client and this document does not exonerate parties to a transaction from exercising all their rights and obligations under the transaction documents. This document cannot be reproduced except in full, without prior written approval of the Company. Any unauthorized alteration, forgery or falsification of the content or appearance of this document is unlawful and offenders may be prosecuted to the fullest extent of the law. Unless otherwise stated the results shown in this test report refer only to the sample(s) tested.

**Attention: To check the authenticity of testing /inspection report & certificate, please contact us at telephone: (86-755) 8307 1443, or email: CN.Doccheck@sgs.com**

SN ID	Sample No.	SGS Sample ID	Description
SN45	A45	NGB24-0032712-0001.C045	HXE110 EU-Silvery metal base
SN46	A46	NGB24-0032712-0001.C046	HXE110 EU-Silvery metal screw
SN47	A47	NGB24-0032712-0001.C047	HXE110 EU-Black rectifier bridge body
SN48	A48	NGB24-0032712-0001.C048	HXE110 EU-Black electronic components
SN49	A49	NGB24-0032712-0001.C049	HXE110 EU-Green PCB body
SN50	A50	NGB24-0032712-0001.C050	HXE110 EU-Silvery metal soldering tin
SN51	A51	NGB24-0032712-0001.C051	HXE110 EU-Gray magnet
SN52	A52	NGB24-0032712-0001.C052	HXE110 EU-Silvery metal rod
SN53	A53	NGB24-0032712-0001.C053	HXE110 EU-White plastic piece
SN54	A54	NGB24-0032712-0001.C054	HXE110 EU-Silvery metal piece
SN55	A55	NGB24-0032712-0001.C055	HXE110 EU-Silvery metal base
SN56	A56	NGB24-0032712-0001.C056	HXE110 EU-Black coating
SN57	A57	NGB24-0032712-0001.C057	HXE110 EU-Black plastic bracket
SN58	A58	NGB24-0032712-0001.C058	HXE110 EU-Copper-colored metal bracket
SN59	A59	NGB24-0032712-0001.C059	HXE110 EU-Black plastic bracket
SN60	A60	NGB24-0032712-0001.C060	HXE110 EU-Copper-colored metal bracket
SN61	A61	NGB24-0032712-0001.C061	HXE110 EU-White plastic lump
SN62	A62	NGB24-0032712-0001.C062	HXE110 EU-Black plastic jacket
SN63	A63	NGB24-0032712-0001.C063	HXE110 EU-Red plastic jacket
SN64	A64	NGB24-0032712-0001.C064	HXE110 EU-Yellow plastic jacket
SN65	A65	NGB24-0032712-0001.C065	HXE110 EU-Blue plastic jacket
SN66	A66	NGB24-0032712-0001.C066	HXE110 EU-Black plastic sheath
SN67	A67	NGB24-0032712-0001.C067	HXE110 EU-Red plastic jacket
SN68	A68	NGB24-0032712-0001.C068	HXE110 EU-Black plastic jacket
SN69	A69	NGB24-0032712-0001.C069	HXE110 EU-Yellow plastic sheath
SN70	A70	NGB24-0032712-0001.C070	HXE110 EU-Black plastic jacket
SN71	A71	NGB24-0032712-0001.C071	HXE110 EU-Black solid adhesive
SN72	A72	NGB24-0032712-0001.C072	HXE110 EU-Black plastic shell
SN73	A73	NGB24-0032712-0001.C073	HXE110 EU-Transparent brown plastic adhesive tape
SN74	A74	NGB24-0032712-0001.C074	HXE110 EU-Black white paper label
SN75	A75	NGB24-0032712-0001.C075	HXE110 EU-Light gray plastic shell
SN76	A76	NGB24-0032712-0001.C076	HXE110 EU-Golden metal lump
SN77	B1	NGB24-0032712-0002.C001	HXE310 EU-Silvery metal bracket
SN78	B2	NGB24-0032712-0002.C002	HXE310 EU-Black plastic bracket
SN79	B3	NGB24-0032712-0002.C003	HXE310 EU-Black IC body
SN80	B4	NGB24-0032712-0002.C004	HXE310 EU-Yellow plastic adhesive tape
SN81	B5	NGB24-0032712-0002.C005	HXE310 EU-Blue plastic shell
SN82	B6	NGB24-0032712-0002.C006	HXE310 EU-White solid adhesive
SN83	B7	NGB24-0032712-0002.C007	HXE310 EU-Beige plastic bracket
SN84	B8	NGB24-0032712-0002.C008	HXE310 EU-Black plastic shell
SN85	B9	NGB24-0032712-0002.C009	HXE310 EU-Black diode body
SN86	B10	NGB24-0032712-0002.C010	HXE310 EU-Black diode body
SN87	B11	NGB24-0032712-0002.C011	HXE310 EU-Black rectifier bridge body



Unless otherwise agreed in writing, this document is issued by the Company subject to its General Conditions of Service printed overleaf, available on request or accessible at <http://www.sgs.com/en/Terms-and-Conditions.aspx> and, for electronic format documents, subject to Terms and Conditions for Electronic Documents at <http://www.sgs.com/en/Terms-and-Conditions/Terms-e-Document.aspx>. Attention is drawn to the limitation of liability, indemnification and jurisdiction issues defined therein. Any holder of this document is advised that information contained hereon reflects the Company's findings at the time of its intervention only and within the limits of Client's instructions, if any. The Company's sole responsibility is to its Client and this document does not exonerate parties to a transaction from exercising all their rights and obligations under the transaction documents. This document cannot be reproduced except in full, without prior written approval of the Company. Any unauthorized alteration, forgery or falsification of the content or appearance of this document is unlawful and offenders may be prosecuted to the fullest extent of the law. Unless otherwise stated the results shown in this test report refer only to the sample(s) tested.

**Attention: To check the authenticity of testing /inspection report & certificate, please contact us at telephone: (86-755) 8307 1443, or email: CN.Doccheck@sgs.com**

SN ID	Sample No.	SGS Sample ID	Description
SN88	B12	NGB24-0032712-0002.C012	HXE310 EU-Black electronic components
SN89	B13	NGB24-0032712-0002.C013	HXE310 EU-Green PCB body
SN90	B14	NGB24-0032712-0002.C014	HXE310 EU-Black electronic components
SN91	B15	NGB24-0032712-0002.C015	HXE310 EU-Black diode body
SN92	B16	NGB24-0032712-0002.C016	HXE310 EU-Silvery metal soldering tin
SN93	B17	NGB24-0032712-0002.C017	HXE310 EU-Black plastic bracket
SN94	B18	NGB24-0032712-0002.C018	HXE310 EU-Black plastic shell
SN95	B19	NGB24-0032712-0002.C019	HXE310 EU-Black plastic jacket
SN96	B20	NGB24-0032712-0002.C020	HXE310 EU-Red plastic jacket
SN97	B21	NGB24-0032712-0002.C021	HXE310 EU-Green plastic sheath
SN98	B22	NGB24-0032712-0002.C022	HXE310 EU-Brown plastic sheath
SN99	B23	NGB24-0032712-0002.C023	HXE310 EU-Semitransparent plastic sheath
SN100	B24	NGB24-0032712-0002.C024	HXE310 EU-Black plastic jacket
SN101	B25	NGB24-0032712-0002.C025	HXE310 EU-Blue plastic jacket
SN102	B26	NGB24-0032712-0002.C026	HXE310 EU-Yellow plastic jacket
SN103	B27	NGB24-0032712-0002.C027	HXE310 EU-Yellow plastic jacket
SN104	B28	NGB24-0032712-0002.C028	HXE310 EU-Green plastic jacket
SN105	B29	NGB24-0032712-0002.C029	HXE310 EU-Rose red plastic jacket
SN106	B30	NGB24-0032712-0002.C030	HXE310 EU-White plastic lump
SN107	B31	NGB24-0032712-0002.C031	HXE310 EU-Black plastic lump
SN108	B32	NGB24-0032712-0002.C032	HXE310 EU-Blue plastic jacket
SN109	B33	NGB24-0032712-0002.C033	HXE310 EU-Black plastic jacket
SN110	B34	NGB24-0032712-0002.C034	HXE310 EU-Rose red plastic jacket
SN111	B35	NGB24-0032712-0002.C035	HXE310 EU-Black plastic lump
SN112	C1	NGB24-0032712-0003.C001	HXF300 EU-Black plastic jacket
SN113	C2	NGB24-0032712-0003.C002	HXF300 EU-Red plastic jacket
SN114	C3	NGB24-0032712-0003.C003	HXF300 EU-Green plastic jacket
SN115	C4	NGB24-0032712-0003.C004	HXF300 EU-Yellow plastic jacket
SN116	C5	NGB24-0032712-0003.C005	HXF300 EU-Black plastic jacket
SN117	C6	NGB24-0032712-0003.C006	HXF300 EU-Red plastic jacket
SN118	C7	NGB24-0032712-0003.C007	HXF300 EU-Silvery metal lump
SN119	C8	NGB24-0032712-0003.C008	HXF300 EU-Green PCB body
SN120	C9	NGB24-0032712-0003.C009	HXF300 EU-Silvery metal soldering tin
SN121	C10	NGB24-0032712-0003.C010	HXF300 EU-Black coating
SN122	C11	NGB24-0032712-0003.C011	HXF300 EU-Silvery metal base
SN123	C12	NGB24-0032712-0003.C012	HXF300 EU-Black electronic components
SN124	C13	NGB24-0032712-0003.C013	HXF300 EU-Blue plastic bracket
SN125	C14	NGB24-0032712-0003.C014	HXF300 EU-Black solid adhesive
SN126	C15	NGB24-0032712-0003.C015	HXF300 EU-Silvery metal pin
SN127	C16	NGB24-0032712-0003.C016	HXF300 EU-Black plastic jacket



Unless otherwise agreed in writing, this document is issued by the Company subject to its General Conditions of Service printed overleaf, available on request or accessible at <http://www.sgs.com/en/Terms-and-Conditions.aspx> and, for electronic format documents, subject to Terms and Conditions for Electronic Documents at <http://www.sgs.com/en/Terms-and-Conditions/Terms-e-Document.aspx>. Attention is drawn to the limitation of liability, indemnification and jurisdiction issues defined therein. Any holder of this document is advised that information contained hereon reflects the Company's findings at the time of its intervention only and within the limits of Client's instructions, if any. The Company's sole responsibility is to its Client and this document does not exonerate parties to a transaction from exercising all their rights and obligations under the transaction documents. This document cannot be reproduced except in full, without prior written approval of the Company. Any unauthorized alteration, forgery or falsification of the content or appearance of this document is unlawful and offenders may be prosecuted to the fullest extent of the law. Unless otherwise stated the results shown in this test report refer only to the sample(s) tested.

**Attention: To check the authenticity of testing /inspection report & certificate, please contact us at telephone: (86-755) 8307 1443, or email: CN.Doccheck@sgs.com**

**Verification Result(s):**

In accordance with the result of material risk assessment, the following disjointed parts in the submitted sample have been verified. (Unless otherwise specified, the unit is mg/kg).

Test Item(s)	A1	A2	A3	A4	A5	A6	A7	A8
Pb	BL	BL	BL	BL	BL	BL	BL	BL
Hg	BL	BL	BL	BL	BL	BL	BL	BL
Cd	BL	BL	BL	BL	BL	BL	BL	BL
Cr(VI)▼	BL	BL	BL	ND	BL	BL	BL	BL
PBB	BL	ND	BL	---	BL	BL	BL	BL
PBDE	BL	ND	BL	---	BL	BL	BL	BL
DEHP	BL	BL	BL	---	ND	BL	BL	BL
BBP	BL	BL	BL	---	ND	BL	BL	BL
DBP	BL	BL	BL	---	ND	BL	BL	BL
DIBP	BL	BL	BL	---	ND	BL	BL	BL
Conclusion	PASS	PASS	PASS	PASS	PASS	PASS	PASS	PASS

Test Item(s)	A9	A10	A11	A12	A13	A14	A15	A16
Pb	BL	BL	BL	BL	BL	BL	BL	BL
Hg	BL	BL	BL	BL	BL	BL	BL	BL
Cd	BL	BL	BL	BL	BL	BL	BL	BL
Cr(VI)▼	ND	BL	BL	BL	BL	BL	BL	BL
PBB	---	BL	BL	ND	---	BL	BL	BL
PBDE	---	BL	BL	ND	---	BL	BL	BL
DEHP	---	BL	ND	BL	---	BL	BL	BL
BBP	---	BL	ND	BL	---	BL	BL	BL
DBP	---	BL	ND	BL	---	BL	BL	BL
DIBP	---	BL	ND	BL	---	BL	BL	BL
Conclusion	PASS	PASS	PASS	PASS	PASS	PASS	PASS	PASS

Test Item(s)	A17	A18	A19	A20	A21	A22	A23	A24
Pb	BL	BL	BL	BL	BL	BL	BL	BL
Hg	BL	BL	BL	BL	BL	BL	BL	BL
Cd	BL	BL	BL	BL	BL	BL	BL	BL
Cr(VI)▼	BL	BL	BL	BL	BL	BL	BL	BL
PBB	BL	BL	BL	BL	BL	BL	BL	BL
PBDE	BL	BL	BL	BL	BL	BL	BL	BL
DEHP	BL	ND	ND	BL	BL	BL	BL	ND
BBP	BL	ND	ND	BL	BL	BL	BL	ND
DBP	BL	ND	ND	BL	BL	BL	BL	ND
DIBP	BL	ND	ND	BL	BL	BL	BL	ND
Conclusion	PASS	PASS	PASS	PASS	PASS	PASS	PASS	PASS

Test Item(s)	A25	A26	A27	A28	A29	A30	A31	A32
Pb	BL	BL	BL	BL	BL	BL	BL	BL
Hg	BL	BL	BL	BL	BL	BL	BL	BL
Cd	BL	BL	BL	BL	BL	BL	BL	BL
Cr(VI)▼	BL	BL	BL	BL	BL	BL	BL	BL



Unless otherwise agreed in writing, this document is issued by the Company subject to its General Conditions of Service printed overleaf, available on request or accessible at <http://www.sgs.com/en/Terms-and-Conditions.aspx> and, for electronic format documents, subject to Terms and Conditions for Electronic Documents at <http://www.sgs.com/en/Terms-and-Conditions/Terms-e-Document.aspx>. Attention is drawn to the limitation of liability, indemnification and jurisdiction issues defined therein. Any holder of this document is advised that information contained hereon reflects the Company's findings at the time of its intervention only and within the limits of Client's instructions, if any. The Company's sole responsibility is to its Client and this document does not exonerate parties to a transaction from exercising all their rights and obligations under the transaction documents. This document cannot be reproduced except in full, without prior written approval of the Company. Any unauthorized alteration, forgery or falsification of the content or appearance of this document is unlawful and offenders may be prosecuted to the fullest extent of the law. Unless otherwise stated the results shown in this test report refer only to the sample(s) tested.

**Attention: To check the authenticity of testing /inspection report & certificate, please contact us at telephone: (86-755) 8307 1443, or email: CN.Doccheck@sgs.com**

Test Item(s)	A25	A26	A27	A28	A29	A30	A31	A32
PBB	BL	ND	BL	BL	BL	ND	ND	BL
PBDE	BL	ND	BL	BL	BL	ND	ND	BL
DEHP	ND	ND	ND	BL	BL	BL	BL	BL
BBP	ND	ND	ND	BL	BL	BL	BL	BL
DBP	ND	ND	ND	BL	BL	BL	BL	BL
DIBP	ND	ND	ND	BL	BL	BL	BL	BL
Conclusion	PASS	PASS	PASS	PASS	PASS	PASS	PASS	PASS

Test Item(s)	A33	A34	A35	A36	A37	A38	A39	A40
Pb	BL	BL	24776▲	BL	BL	BL	BL	BL
Hg	BL	BL	BL	BL	BL	BL	BL	BL
Cd	BL	BL	BL	BL	BL	BL	BL	BL
Cr(VI)▼	BL	BL	BL	BL	BL	BL	BL	BL
PBB	BL	BL	---	BL	BL	BL	BL	BL
PBDE	BL	BL	---	BL	BL	BL	BL	BL
DEHP	BL	BL	---	ND	BL	ND	ND	BL
BBP	BL	BL	---	ND	BL	ND	ND	BL
DBP	BL	BL	---	ND	BL	ND	ND	BL
DIBP	BL	BL	---	ND	BL	ND	ND	BL
Conclusion	PASS	PASS	PASS	PASS	PASS	PASS	PASS	PASS

Test Item(s)	A41	A42	A43	A44	A45	A46	A47	A48
Pb	BL	BL	BL	BL	BL	BL	BL	BL
Hg	BL	BL	BL	BL	BL	BL	BL	BL
Cd	BL	BL	BL	BL	BL	BL	BL	BL
Cr(VI)▼	BL	BL	BL	BL	ND	BL	BL	BL
PBB	BL	---	BL	BL	---	---	BL	BL
PBDE	BL	---	BL	BL	---	---	BL	BL
DEHP	BL	---	BL	ND	---	---	BL	ND
BBP	BL	---	BL	ND	---	---	BL	ND
DBP	BL	---	BL	ND	---	---	BL	ND
DIBP	BL	---	BL	ND	---	---	BL	ND
Conclusion	PASS	PASS	PASS	PASS	PASS	PASS	PASS	PASS

Test Item(s)	A49	A50	A51	A52	A53	A54	A55	A56
Pb	BL	BL	BL	BL	BL	BL	BL	BL
Hg	BL	BL	BL	BL	BL	BL	BL	BL
Cd	BL	ND	BL	BL	BL	BL	BL	BL
Cr(VI)▼	BL	BL	BL	BL	BL	BL	ND	BL
PBB	ND	---	BL	---	ND	---	---	BL
PBDE	ND	---	BL	---	ND	---	---	BL
DEHP	BL	---	---	---	BL	---	---	ND
BBP	BL	---	---	---	BL	---	---	ND
DBP	BL	---	---	---	BL	---	---	ND
DIBP	BL	---	---	---	BL	---	---	ND
Conclusion	PASS	PASS	PASS	PASS	PASS	PASS	PASS	PASS



Unless otherwise agreed in writing, this document is issued by the Company subject to its General Conditions of Service printed overleaf, available on request or accessible at <http://www.sgs.com/en/Terms-and-Conditions.aspx> and, for electronic format documents, subject to Terms and Conditions for Electronic Documents at <http://www.sgs.com/en/Terms-and-Conditions/Terms-e-Document.aspx>. Attention is drawn to the limitation of liability, indemnification and jurisdiction issues defined therein. Any holder of this document is advised that information contained hereon reflects the Company's findings at the time of its intervention only and within the limits of Client's instructions, if any. The Company's sole responsibility is to its Client and this document does not exonerate parties to a transaction from exercising all their rights and obligations under the transaction documents. This document cannot be reproduced except in full, without prior written approval of the Company. Any unauthorized alteration, forgery or falsification of the content or appearance of this document is unlawful and offenders may be prosecuted to the fullest extent of the law. Unless otherwise stated the results shown in this test report refer only to the sample(s) tested.

**Attention: To check the authenticity of testing / inspection report & certificate, please contact us at telephone: (86-755) 8307 1443, or email: CN.Doccheck@sgs.com**

Test Item(s)	A57	A58	A59	A60	A61	A62	A63	A64
Pb	BL	BL	BL	BL	BL	BL	BL	BL
Hg	BL	BL	BL	BL	BL	BL	BL	BL
Cd	BL	BL	BL	BL	BL	BL	BL	BL
Cr(VI)▼	BL	BL	BL	BL	BL	BL	BL	BL
PBB	ND	---	ND	---	BL	BL	BL	BL
PBDE	ND	---	ND	---	BL	BL	BL	BL
DEHP	BL	---	BL	---	BL	BL	BL	BL
BBP	BL	---	BL	---	BL	BL	BL	BL
DBP	BL	---	BL	---	BL	BL	BL	BL
DIBP	BL	---	BL	---	BL	BL	BL	BL
Conclusion	PASS	PASS	PASS	PASS	PASS	PASS	PASS	PASS

Test Item(s)	A65	A66	A67	A68	A69	A70	A71	A72
Pb	BL	BL	BL	BL	BL	BL	BL	BL
Hg	BL	BL	BL	BL	BL	BL	BL	BL
Cd	BL	BL	BL	BL	BL	BL	BL	BL
Cr(VI)▼	BL	BL	BL	BL	BL	BL	BL	BL
PBB	BL	BL	BL	BL	BL	BL	BL	ND
PBDE	BL	BL	BL	BL	BL	BL	BL	ND
DEHP	BL	BL	BL	BL	BL	BL	BL	BL
BBP	BL	BL	BL	BL	BL	BL	BL	BL
DBP	BL	BL	BL	BL	BL	BL	BL	BL
DIBP	BL	BL	BL	BL	BL	BL	BL	BL
Conclusion	PASS	PASS	PASS	PASS	PASS	PASS	PASS	PASS

Test Item(s)	A73	A74	A75	A76	B1	B2	B3	B4
Pb	BL	BL	BL	24796▲	BL	BL	BL	BL
Hg	BL	BL	BL	BL	BL	BL	BL	BL
Cd	BL	BL	BL	BL	BL	BL	BL	BL
Cr(VI)▼	BL	BL	BL	BL	ND	BL	BL	BL
PBB	BL	BL	ND	---	---	BL	BL	BL
PBDE	BL	BL	ND	---	---	BL	BL	BL
DEHP	ND	ND	BL	---	---	BL	ND	BL
BBP	ND	ND	BL	---	---	BL	ND	BL
DBP	ND	ND	BL	---	---	BL	ND	BL
DIBP	ND	ND	BL	---	---	BL	ND	BL
Conclusion	PASS	PASS	PASS	PASS	PASS	PASS	PASS	PASS

Test Item(s)	B5	B6	B7	B8	B9	B10	B11	B12
Pb	BL	BL	BL	BL	BL	BL	BL	BL
Hg	BL	BL	BL	BL	BL	BL	BL	BL
Cd	BL	BL	BL	BL	BL	BL	BL	BL
Cr(VI)▼	BL	BL	BL	BL	BL	BL	BL	BL
PBB	ND	BL	ND	ND	BL	BL	BL	BL



Unless otherwise agreed in writing, this document is issued by the Company subject to its General Conditions of Service printed overleaf, available on request or accessible at <http://www.sgs.com/en/Terms-and-Conditions.aspx> and, for electronic format documents, subject to Terms and Conditions for Electronic Documents at <http://www.sgs.com/en/Terms-and-Conditions/Terms-e-Document.aspx>. Attention is drawn to the limitation of liability, indemnification and jurisdiction issues defined therein. Any holder of this document is advised that information contained hereon reflects the Company's findings at the time of its intervention only and within the limits of Client's instructions, if any. The Company's sole responsibility is to its Client and this document does not exonerate parties to a transaction from exercising all their rights and obligations under the transaction documents. This document cannot be reproduced except in full, without prior written approval of the Company. Any unauthorized alteration, forgery or falsification of the content or appearance of this document is unlawful and offenders may be prosecuted to the fullest extent of the law. Unless otherwise stated the results shown in this test report refer only to the sample(s) tested.

**Attention: To check the authenticity of testing /inspection report & certificate, please contact us at telephone: (86-755) 8307 1443, or email: CN.Doccheck@sgs.com**

Test Item(s)	B5	B6	B7	B8	B9	B10	B11	B12
PBDE	ND	BL	ND	ND	BL	BL	BL	BL
DEHP	ND	ND	ND	BL	ND	ND	BL	ND
BBP	ND	ND	ND	BL	ND	ND	BL	ND
DBP	ND	ND	ND	BL	ND	ND	BL	ND
DIBP	ND	ND	ND	BL	ND	ND	BL	ND
Conclusion	PASS	PASS	PASS	PASS	PASS	PASS	PASS	PASS

Test Item(s)	B13	B14	B15	B16	B17	B18	B19	B20
Pb	BL	BL	BL	BL	BL	BL	BL	BL
Hg	BL	BL	BL	BL	BL	BL	BL	BL
Cd	BL	BL	BL	ND	BL	BL	BL	BL
Cr(VI)▼	BL	BL	BL	BL	BL	BL	BL	BL
PBB	ND	BL	BL	---	ND	ND	BL	BL
PBDE	ND	BL	BL	---	ND	ND	BL	BL
DEHP	BL	ND	BL	---	BL	BL	BL	BL
BBP	BL	ND	BL	---	BL	BL	BL	BL
DBP	BL	ND	BL	---	BL	BL	BL	BL
DIBP	BL	ND	BL	---	BL	BL	BL	BL
Conclusion	PASS	PASS	PASS	PASS	PASS	PASS	PASS	PASS

Test Item(s)	B21	B22	B23	B24	B25	B26	B27	B28
Pb	BL	BL	BL	BL	BL	BL	BL	BL
Hg	BL	BL	BL	BL	BL	BL	BL	BL
Cd	BL	BL	BL	BL	BL	BL	BL	BL
Cr(VI)▼	BL	BL	BL	BL	BL	BL	BL	BL
PBB	BL	BL	BL	BL	BL	BL	BL	BL
PBDE	BL	BL	BL	BL	BL	BL	BL	BL
DEHP	BL	BL	BL	BL	BL	BL	BL	BL
BBP	BL	BL	BL	BL	BL	BL	BL	BL
DBP	BL	BL	BL	BL	BL	BL	BL	BL
DIBP	BL	BL	BL	BL	BL	BL	BL	BL
Conclusion	PASS	PASS	PASS	PASS	PASS	PASS	PASS	PASS

Test Item(s)	B29	B30	B31	B32	B33	B34	B35	C1
Pb	BL	BL	BL	BL	BL	BL	BL	BL
Hg	BL	BL	BL	BL	BL	BL	BL	BL
Cd	BL	BL	BL	BL	BL	BL	BL	BL
Cr(VI)▼	BL	BL	BL	BL	BL	BL	BL	BL
PBB	BL	BL	BL	BL	BL	BL	ND	BL
PBDE	BL	BL	BL	BL	BL	BL	ND	BL
DEHP	BL	ND	ND	BL	BL	BL	ND	BL
BBP	BL	ND	ND	BL	BL	BL	ND	BL
DBP	BL	ND	ND	BL	BL	BL	ND	BL
DIBP	BL	ND	ND	BL	BL	BL	ND	BL
Conclusion	PASS	PASS	PASS	PASS	PASS	PASS	PASS	PASS



Unless otherwise agreed in writing, this document is issued by the Company subject to its General Conditions of Service printed overleaf, available on request or accessible at <http://www.sgs.com/en/Terms-and-Conditions.aspx> and, for electronic format documents, subject to Terms and Conditions for Electronic Documents at <http://www.sgs.com/en/Terms-and-Conditions/Terms-e-Document.aspx>. Attention is drawn to the limitation of liability, indemnification and jurisdiction issues defined therein. Any holder of this document is advised that information contained hereon reflects the Company's findings at the time of its intervention only and within the limits of Client's instructions, if any. The Company's sole responsibility is to its Client and this document does not exonerate parties to a transaction from exercising all their rights and obligations under the transaction documents. This document cannot be reproduced except in full, without prior written approval of the Company. Any unauthorized alteration, forgery or falsification of the content or appearance of this document is unlawful and offenders may be prosecuted to the fullest extent of the law. Unless otherwise stated the results shown in this test report refer only to the sample(s) tested.

**Attention: To check the authenticity of testing / inspection report & certificate, please contact us at telephone: (86-755) 8307 1443, or email: CN.Doccheck@sgs.com**

Test Item(s)	C2	C3	C4	C5	C6	C7	C8	C9
Pb	BL	BL	BL	BL	BL	24675▲	BL	BL
Hg	BL	BL	BL	BL	BL	BL	BL	BL
Cd	BL	BL	BL	BL	BL	BL	BL	ND
Cr(VI)▼	BL	BL	BL	BL	BL	BL	BL	BL
PBB	BL	BL	BL	BL	BL	---	ND	---
PBDE	BL	BL	BL	BL	BL	---	ND	---
DEHP	BL	BL	BL	BL	BL	---	BL	---
BBP	BL	BL	BL	BL	BL	---	BL	---
DBP	BL	BL	BL	BL	BL	---	BL	---
DIBP	BL	BL	BL	BL	BL	---	BL	---
Conclusion	PASS	PASS	PASS	PASS	PASS	PASS	PASS	PASS

Test Item(s)	C10	C11	C12	C13	C14	C15	C16
Pb	BL	BL	BL	BL	BL	BL	BL
Hg	BL	BL	BL	BL	BL	BL	BL
Cd	BL	BL	BL	BL	BL	BL	BL
Cr(VI)▼	BL	ND	BL	BL	BL	BL	BL
PBB	BL	---	BL	ND	BL	---	BL
PBDE	BL	---	BL	ND	BL	---	BL
DEHP	ND	---	BL	BL	BL	---	BL
BBP	ND	---	BL	BL	BL	---	BL
DBP	ND	---	BL	BL	BL	---	BL
DIBP	ND	---	BL	BL	BL	---	BL
Conclusion	PASS	PASS	PASS	PASS	PASS	PASS	PASS



Unless otherwise agreed in writing, this document is issued by the Company subject to its General Conditions of Service printed overleaf, available on request or accessible at <http://www.sgs.com/en/Terms-and-Conditions.aspx> and, for electronic format documents, subject to Terms and Conditions for Electronic Documents at <http://www.sgs.com/en/Terms-and-Conditions/Terms-e-Document.aspx>. Attention is drawn to the limitation of liability, indemnification and jurisdiction issues defined therein. Any holder of this document is advised that information contained hereon reflects the Company's findings at the time of its intervention only and within the limits of Client's instructions, if any. The Company's sole responsibility is to its Client and this document does not exonerate parties to a transaction from exercising all their rights and obligations under the transaction documents. This document cannot be reproduced except in full, without prior written approval of the Company. Any unauthorized alteration, forgery or falsification of the content or appearance of this document is unlawful and offenders may be prosecuted to the fullest extent of the law. Unless otherwise stated the results shown in this test report refer only to the sample(s) tested.

**Attention: To check the authenticity of testing /inspection report & certificate, please contact us at telephone: (86-755) 8307 1443, or email: CN.Doccheck@sgs.com**

**Notes:**

(1) Interpretation of screening results by X-ray fluorescence spectrometry (XRF):

(a) Screening limits in mg/kg for regulated elements in various matrices according to IEC 62321-1:2013 Annex A as below table.

Element	Polymers	Metals	Composite Materials
Cd	$BL \leq (70-3\sigma) < X < (130+3\sigma) \leq OL$	$BL \leq (70-3\sigma) < X < (130+3\sigma) \leq OL$	$LOD < X < (150+3\sigma) \leq OL$
Pb	$BL \leq (700-3\sigma) < X < (1300+3\sigma) \leq OL$	$BL \leq (700-3\sigma) < X < (1300+3\sigma) \leq OL$	$BL \leq (500-3\sigma) < X < (1500+3\sigma) \leq OL$
Hg	$BL \leq (700-3\sigma) < X < (1300+3\sigma) \leq OL$	$BL \leq (700-3\sigma) < X < (1300+3\sigma) \leq OL$	$BL \leq (500-3\sigma) < X < (1500+3\sigma) \leq OL$
Br	$BL \leq (300-3\sigma) < X$	Not applicable	$BL \leq (250-3\sigma) < X$
Cr	$BL \leq (700-3\sigma) < X$	$BL \leq (700-3\sigma) < X$	$BL \leq (500-3\sigma) < X$

- (b) If the maximum allowed level restricts PBB/PBDE and Cr(VI) rather than Br and Cr, the exceptions are the XRF determinations of Br and Cr. If the quantitative results for the elements Br and/or Cr are higher than the limit (for Br calculated based on the stoichiometry of Br in the most common congeners of PBB/PBDE), the sample is "inconclusive".
- (c) Results are obtained by EDXRF for primary screening, LOD = Limit of Detection, BL = Below Limit, OL= Over Limit, IN (The symbol X marks the region)=Inconclusive, where further investigation is necessary, and further chemical testing by ICP-OES (for Cd, Pb, Hg), UV-Vis (for Cr(VI)) and GC-MS (for PBB/PBDE) are recommended to be performed.
- (d) The EDXRF screening test for elements – The reading may be different to the actual content in the sample be of non-uniformity composition.

(2) Screening results of Phthalates (PHTH) below the limits are shown as "BL". Further chemical testing by GC-MS is to be performed if the results exceed limits.

Test Items	CAS No.
Bis(2-ethylhexyl) phthalate (DEHP)	117-81-7
Butyl benzyl phthalate (BBP)	85-68-7
Dibutyl phthalate (DBP)	84-74-2
Diisobutyl phthalate (DIBP)	84-69-5

(3) Interpretation of results by chemical tests:

(a) mg/kg = 0.0001%, MDL=Method detection Limit, ND = Not Detected (<MDL), --- = Not Applicable.

(b) Unit and MDL in wet chemical test

Test Items	Pb	Hg	Cd	DEHP	BBP	DBP	DIBP
Unit	mg/kg	mg/kg	mg/kg	mg/kg	mg/kg	mg/kg	mg/kg
MDL	10	10	10	100	100	100	100

The MDL for single compound of PBB and PBDE is 100 mg/kg,  
 MDL of Cr(VI) for polymer, composite and leather sample is 10 mg/kg.  
 MDL of Cr(VI) for metal sample is 0.10 µg/cm².

(c) ▼ =Metal sample

- a. The sample is positive for Cr(VI) if the Cr(VI) concentration is greater than 0.13 µg/cm². The sample coating is considered to contain Cr(VI).
- b. The sample is negative for Cr(VI) if Cr(VI) is ND (concentration less than 0.10 µg/cm²). The coating is considered a non-Cr(VI) based coating
- c. The result between 0.10 µg/cm² and 0.13 µg/cm² is considered to be inconclusive-unavoidable coating variations may influence the determination

Information on storage conditions and production date of the tested sample is unavailable and thus



Cr(VI) results represent status of the sample at the time of testing.

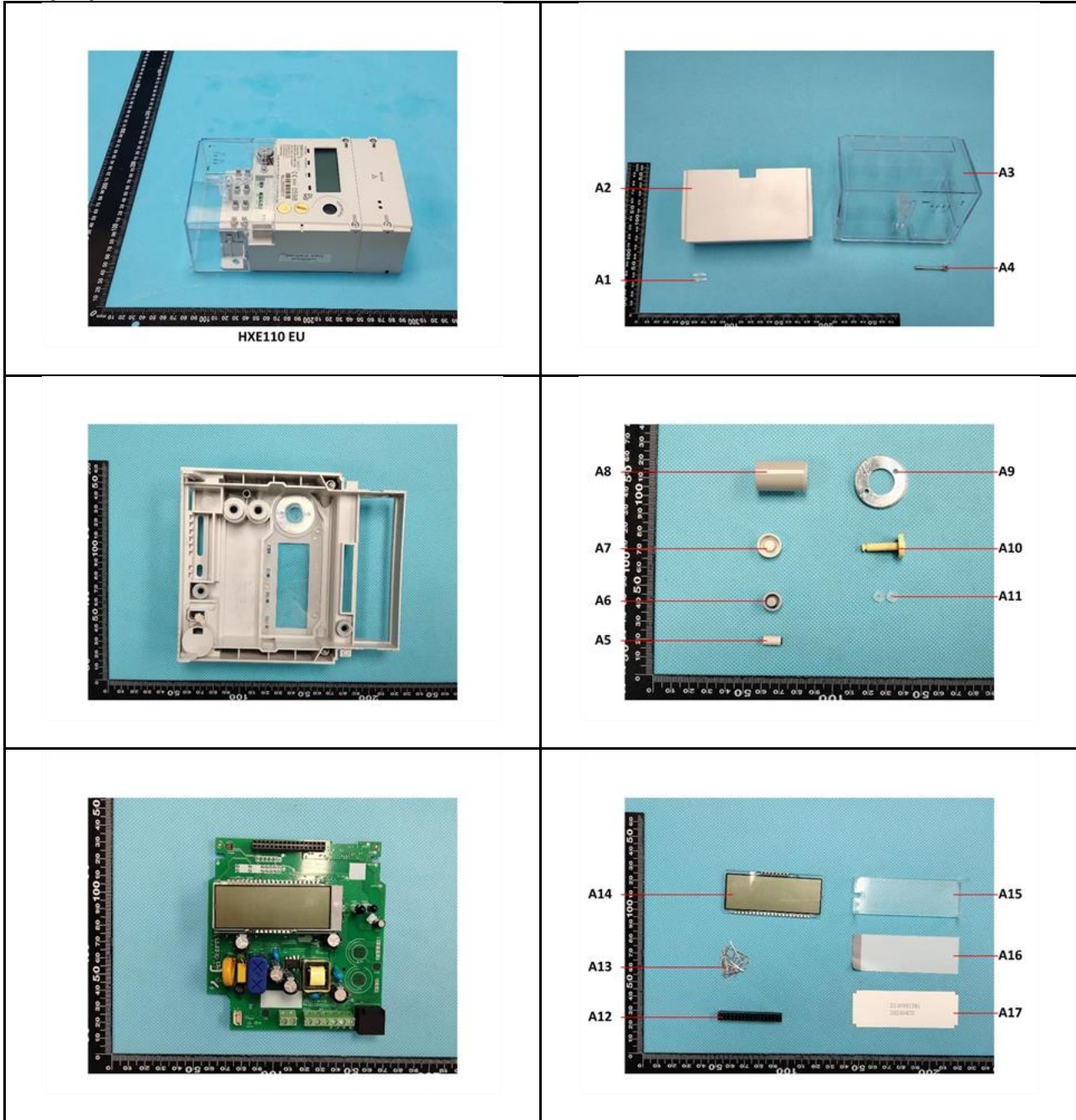
- (4) Restricted substances and maximum concentration values tolerated by weight in homogeneous materials under RoHS Directive: Cd: 0.01%, Pb/Hg/Cr(VI)/PBB/PBDE/DEHP/BBP/DBP/DIBP: 0.1%. The limit is quoted from RoHS Directive (EU) 2015/863.
- (5) IEC 62321 series is equivalent to EN 62321 series.
- (6)▲=According to the declaration from the client, Lead (Pb) in A35, A76 and C7 are exempted by EU RoHS directive 2011/65/EU based on [ANNEX III 6(c)]: Copper alloy containing up to 4 % lead by weight. More information about exemption can be found via the following link:  
<https://rohs.sgsonline.com.cn/PDFLinks/en/RSTS-TP-037%20RoHS%20Exemption%20%28EN%29.pdf>
- (7) According to the declaration from applicant, the materials of other parts in Model mentioned in Tested Extended Model No. are the same as those in Model "HXE110 EU", and the results of Model "HXE110 EU" for support the results of other parts in mentioned in Tested Extended Model No.. The applicant will take the responsibility of all discrepancy and risk.

Unless otherwise stated, the decision rule for conformity reporting is based on Binary Statement for Simple Acceptance Rule ( $w=0$ ) stated in ILAC-G8:09/2019.



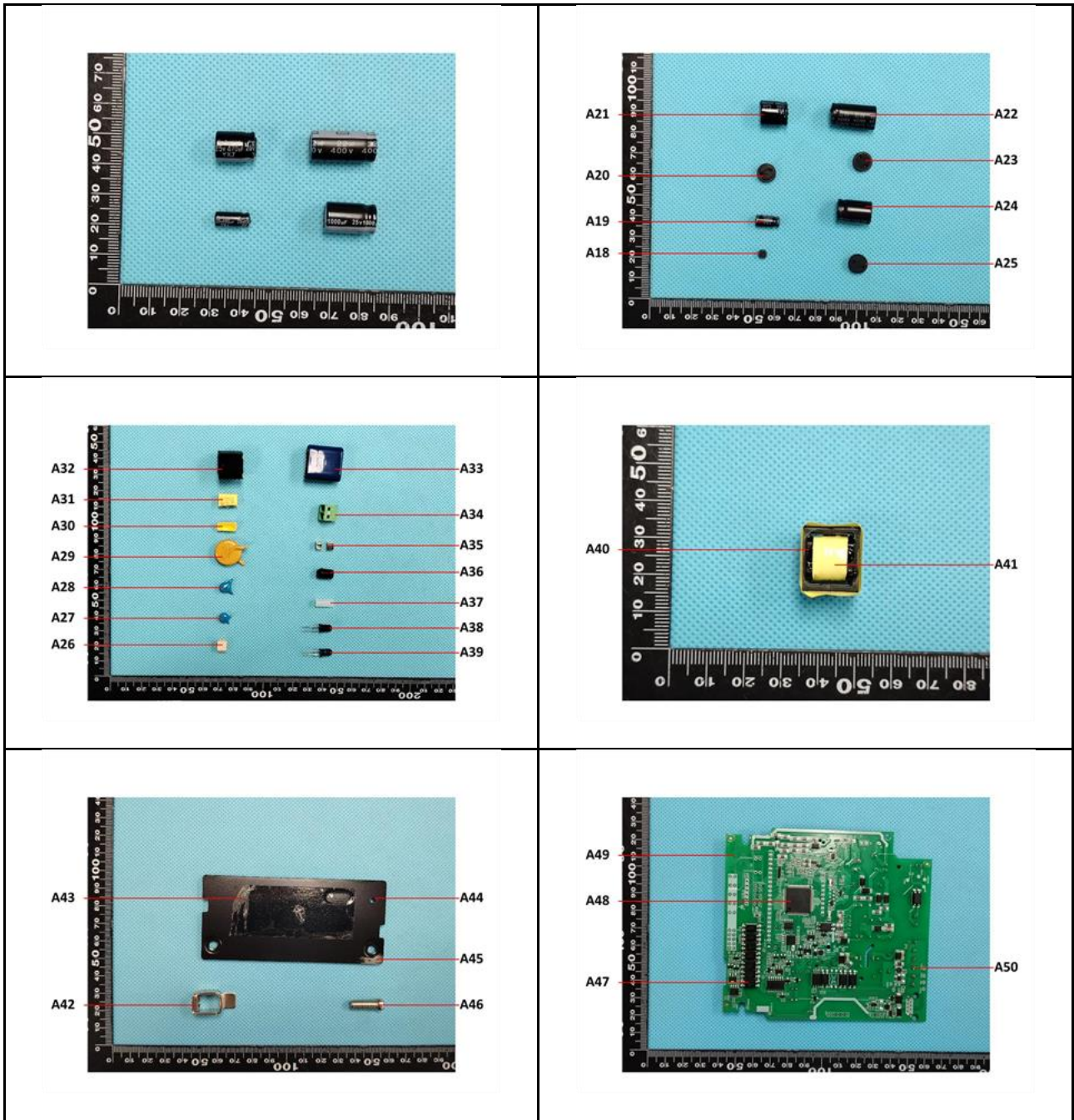
Unless otherwise agreed in writing, this document is issued by the Company subject to its General Conditions of Service printed overleaf, available on request or accessible at <http://www.sgs.com/en/Terms-and-Conditions.aspx> and, for electronic format documents, subject to Terms and Conditions for Electronic Documents at <http://www.sgs.com/en/Terms-and-Conditions/Terms-e-Document.aspx>. Attention is drawn to the limitation of liability, indemnification and jurisdiction issues defined therein. Any holder of this document is advised that information contained hereon reflects the Company's findings at the time of its intervention only and within the limits of Client's instructions, if any. The Company's sole responsibility is to its Client and this document does not exonerate parties to a transaction from exercising all their rights and obligations under the transaction documents. This document cannot be reproduced except in full, without prior written approval of the Company. Any unauthorized alteration, forgery or falsification of the content or appearance of this document is unlawful and offenders may be prosecuted to the fullest extent of the law. Unless otherwise stated the results shown in this test report refer only to the sample(s) tested.  
**Attention: To check the authenticity of testing /inspection report & certificate, please contact us at telephone: (86-755) 8307 1443, or email: CN.Doccheck@sgs.com**

Sample photos:



Unless otherwise agreed in writing, this document is issued by the Company subject to its General Conditions of Service printed overleaf, available on request or accessible at <http://www.sgs.com/en/Terms-and-Conditions.aspx> and, for electronic format documents, subject to Terms and Conditions for Electronic Documents at <http://www.sgs.com/en/Terms-and-Conditions/Terms-e-Document.aspx>. Attention is drawn to the limitation of liability, indemnification and jurisdiction issues defined therein. Any holder of this document is advised that information contained hereon reflects the Company's findings at the time of its intervention only and within the limits of Client's instructions, if any. The Company's sole responsibility is to its Client and this document does not exonerate parties to a transaction from exercising all their rights and obligations under the transaction documents. This document cannot be reproduced except in full, without prior written approval of the Company. Any unauthorized alteration, forgery or falsification of the content or appearance of this document is unlawful and offenders may be prosecuted to the fullest extent of the law. Unless otherwise stated the results shown in this test report refer only to the sample(s) tested.

Attention: To check the authenticity of testing /inspection report & certificate, please contact us at telephone: (86-755) 8307 1443, or email: [CN.Doccheck@sgs.com](mailto:CN.Doccheck@sgs.com)



Unless otherwise agreed in writing, this document is issued by the Company subject to its General Conditions of Service printed overleaf, available on request or accessible at <http://www.sgs.com/en/Terms-and-Conditions.aspx> and, for electronic format documents, subject to Terms and Conditions for Electronic Documents at <http://www.sgs.com/en/Terms-and-Conditions/Terms-e-Document.aspx>. Attention is drawn to the limitation of liability, indemnification and jurisdiction issues defined therein. Any holder of this document is advised that information contained hereon reflects the Company's findings at the time of its intervention only and within the limits of Client's instructions, if any. The Company's sole responsibility is to its Client and this document does not exonerate parties to a transaction from exercising all their rights and obligations under the transaction documents. This document cannot be reproduced except in full, without prior written approval of the Company. Any unauthorized alteration, forgery or falsification of the content or appearance of this document is unlawful and offenders may be prosecuted to the fullest extent of the law. Unless otherwise stated the results shown in this test report refer only to the sample(s) tested.

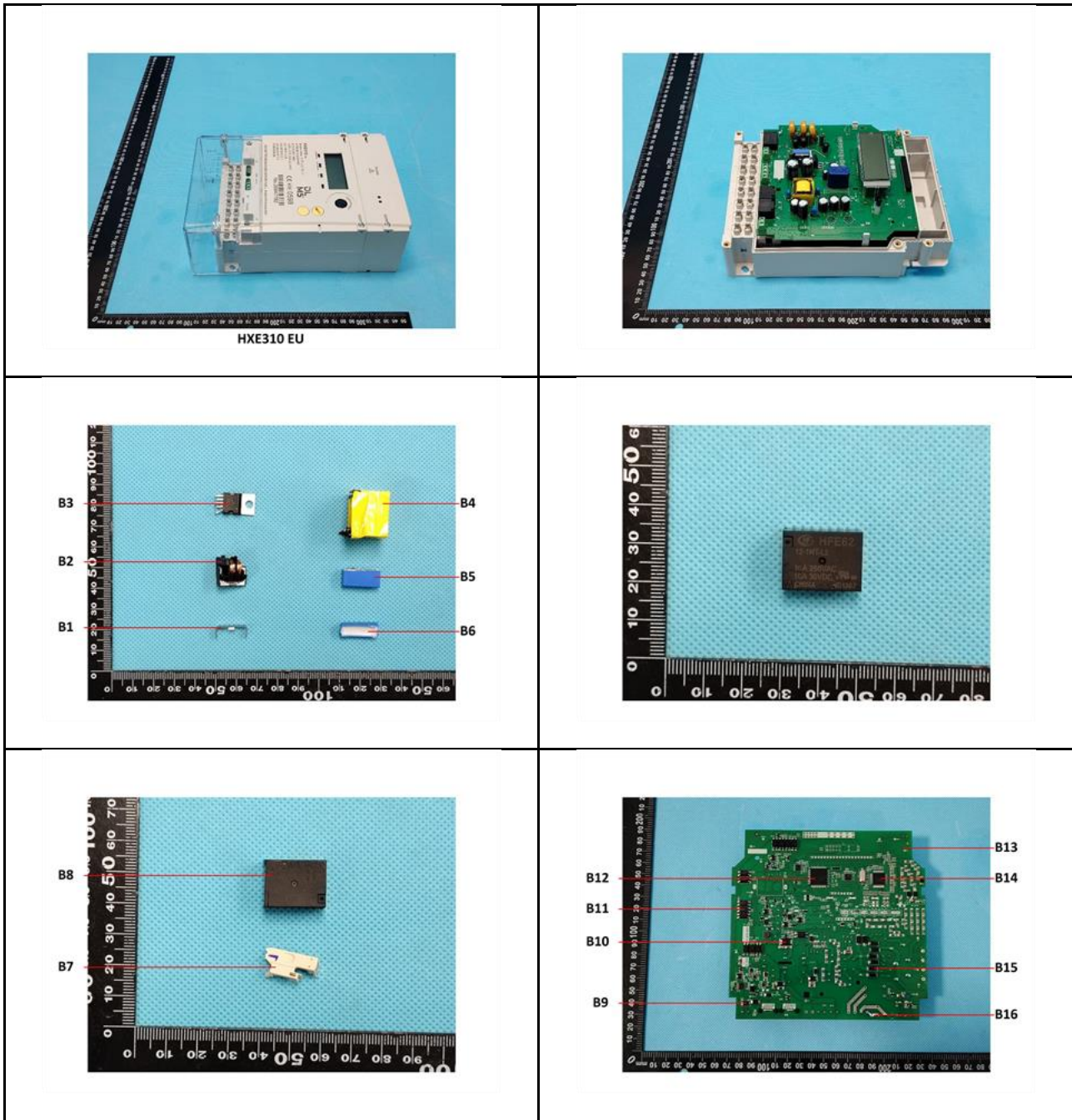
Attention: To check the authenticity of testing / inspection report & certificate, please contact us at telephone: (86-755) 8307 1443, or email: [CN.Doccheck@sgs.com](mailto:CN.Doccheck@sgs.com)

SGS-CTC (Shanghai) Technical Services Co., Ltd.  
Ningbo Branch Chemical Laboratory

No.1177, Lingyun Road, Hi-Tech Zone, Ningbo, Zhejiang, China 315040 tE&E (86-574)89070249  
中国·浙江·宁波高新区凌云路1177号 邮编: 315040 tHL (86-574)89070271 tML (86-574)89070242 sgs.china@sgs.com

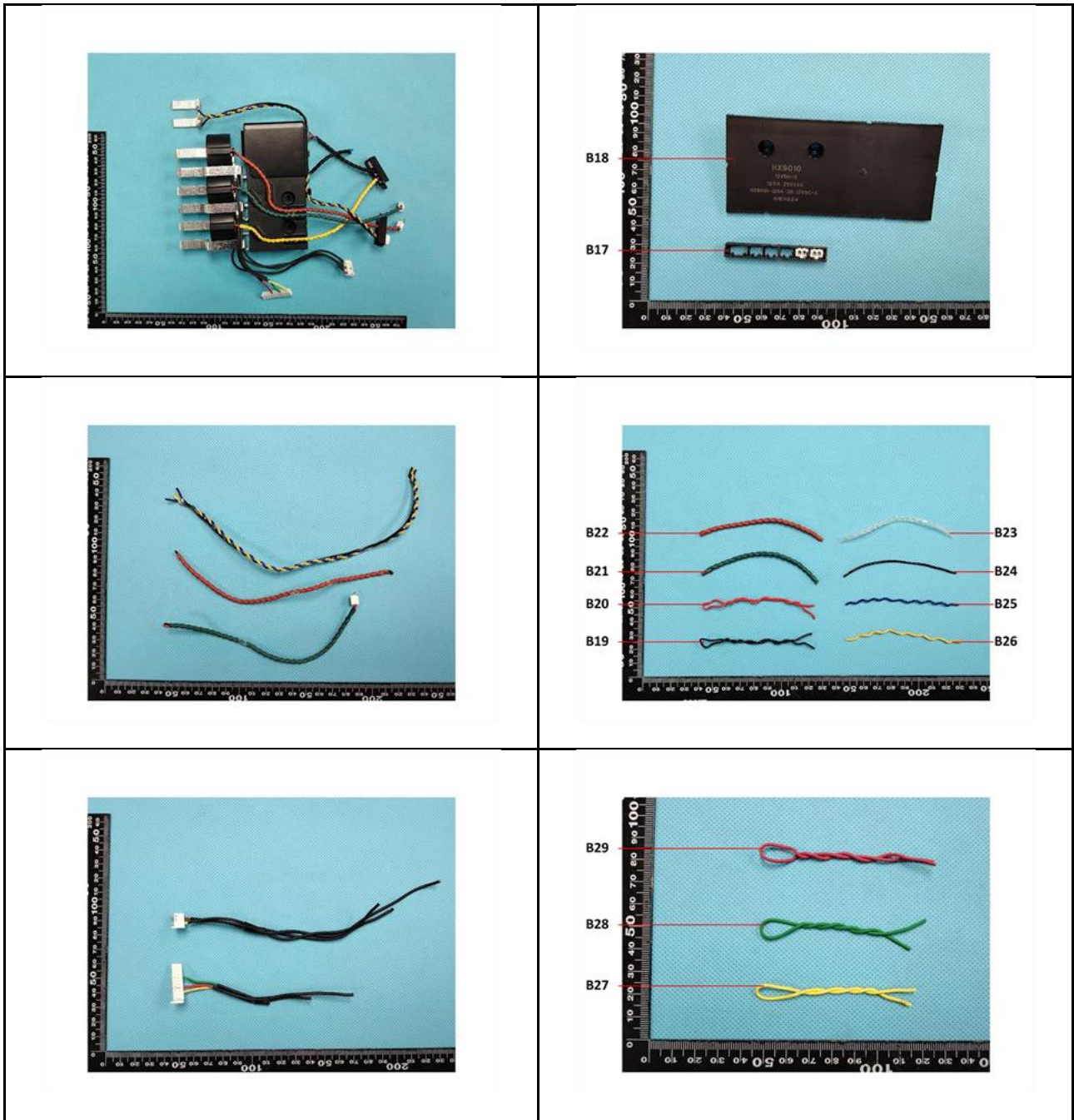
www.sgsgroup.com.cn  
sgs.china@sgs.com





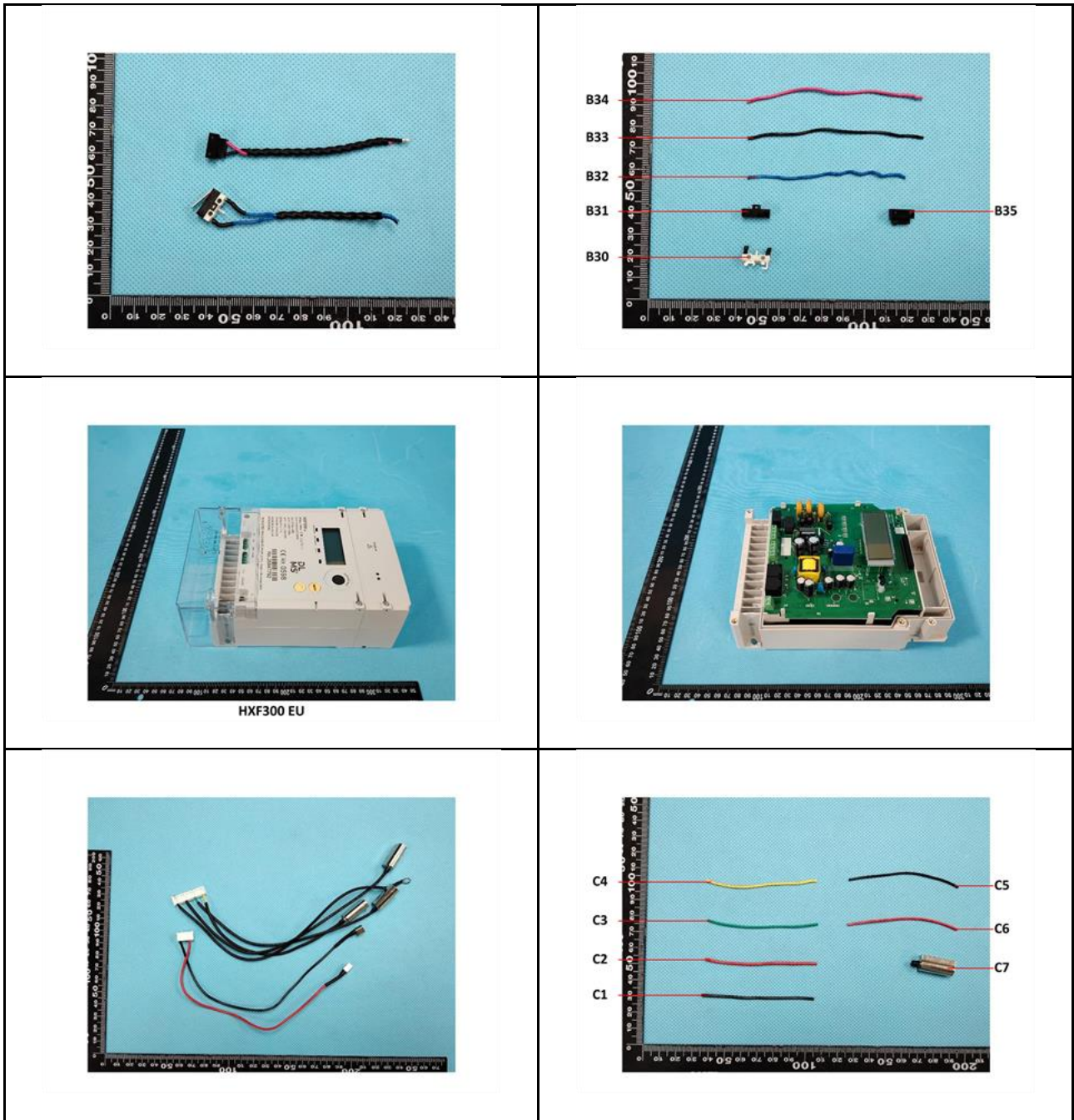
Unless otherwise agreed in writing, this document is issued by the Company subject to its General Conditions of Service printed overleaf, available on request or accessible at <http://www.sgs.com/en/Terms-and-Conditions.aspx> and, for electronic format documents, subject to Terms and Conditions for Electronic Documents at <http://www.sgs.com/en/Terms-and-Conditions/Terms-e-Document.aspx>. Attention is drawn to the limitation of liability, indemnification and jurisdiction issues defined therein. Any holder of this document is advised that information contained hereon reflects the Company's findings at the time of its intervention only and within the limits of Client's instructions, if any. The Company's sole responsibility is to its Client and this document does not exonerate parties to a transaction from exercising all their rights and obligations under the transaction documents. This document cannot be reproduced except in full, without prior written approval of the Company. Any unauthorized alteration, forgery or falsification of the content or appearance of this document is unlawful and offenders may be prosecuted to the fullest extent of the law. Unless otherwise stated the results shown in this test report refer only to the sample(s) tested.

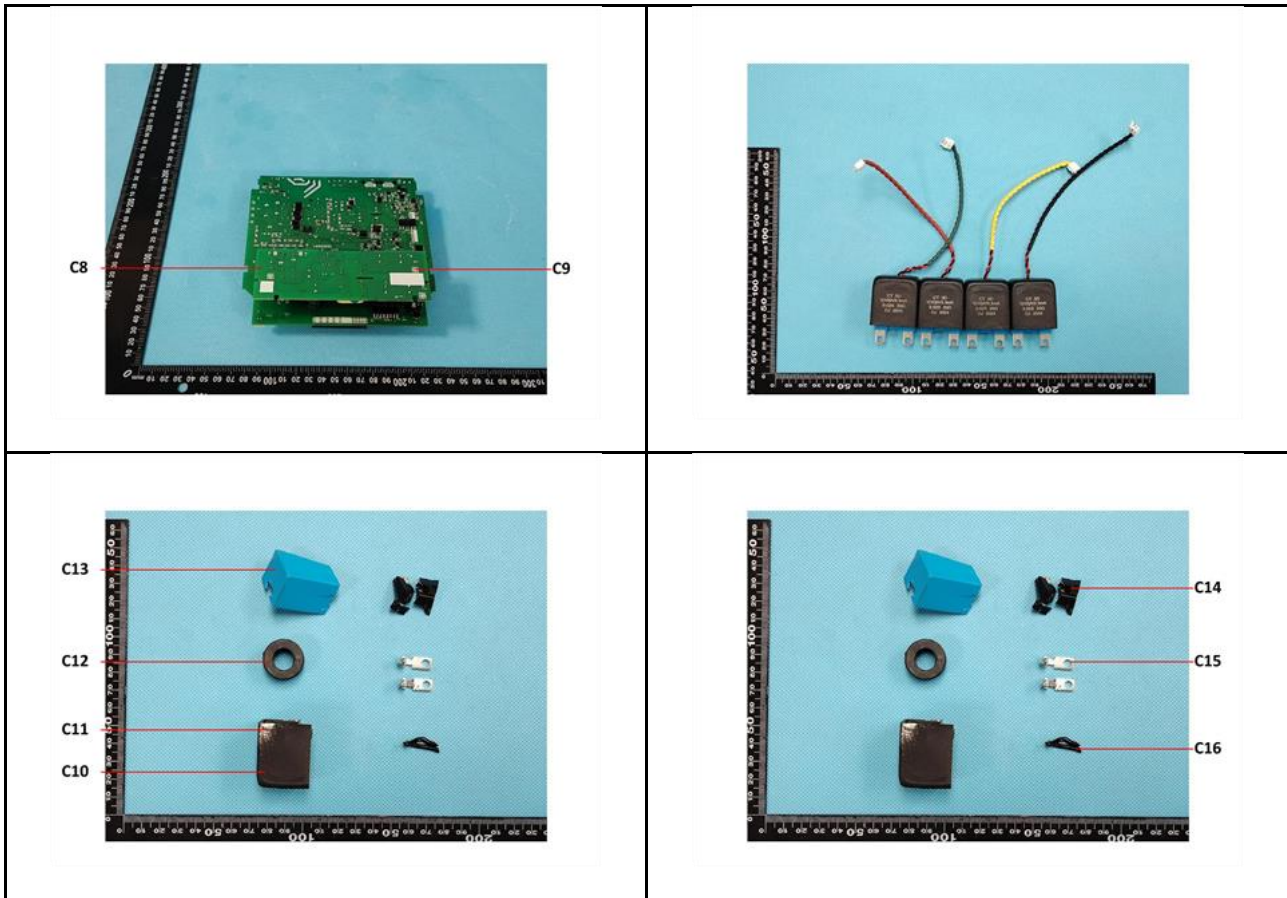
Attention: To check the authenticity of testing /inspection report & certificate, please contact us at telephone: (86-755) 8307 1443, or email: [CN.Doccheck@sgs.com](mailto:CN.Doccheck@sgs.com)



Unless otherwise agreed in writing, this document is issued by the Company subject to its General Conditions of Service printed overleaf, available on request or accessible at <http://www.sgs.com/en/Terms-and-Conditions.aspx> and, for electronic format documents, subject to Terms and Conditions for Electronic Documents at <http://www.sgs.com/en/Terms-and-Conditions/Terms-e-Document.aspx>. Attention is drawn to the limitation of liability, indemnification and jurisdiction issues defined therein. Any holder of this document is advised that information contained hereon reflects the Company's findings at the time of its intervention only and within the limits of Client's instructions, if any. The Company's sole responsibility is to its Client and this document does not exonerate parties to a transaction from exercising all their rights and obligations under the transaction documents. This document cannot be reproduced except in full, without prior written approval of the Company. Any unauthorized alteration, forgery or falsification of the content or appearance of this document is unlawful and offenders may be prosecuted to the fullest extent of the law. Unless otherwise stated the results shown in this test report refer only to the sample(s) tested.

Attention: To check the authenticity of testing / inspection report & certificate, please contact us at telephone: (86-755) 8307 1443, or email: [CN.Doccheck@sgs.com](mailto:CN.Doccheck@sgs.com)





SGS authenticate the photo on original report only  
 \*\*\* End of Report \*\*\*



Unless otherwise agreed in writing, this document is issued by the Company subject to its General Conditions of Service printed overleaf, available on request or accessible at <http://www.sgs.com/en/Terms-and-Conditions.aspx> and, for electronic format documents, subject to Terms and Conditions for Electronic Documents at <http://www.sgs.com/en/Terms-and-Conditions/Terms-e-Document.aspx>. Attention is drawn to the limitation of liability, indemnification and jurisdiction issues defined therein. Any holder of this document is advised that information contained hereon reflects the Company's findings at the time of its intervention only and within the limits of Client's instructions, if any. The Company's sole responsibility is to its Client and this document does not exonerate parties to a transaction from exercising all their rights and obligations under the transaction documents. This document cannot be reproduced except in full, without prior written approval of the Company. Any unauthorized alteration, forgery or falsification of the content or appearance of this document is unlawful and offenders may be prosecuted to the fullest extent of the law. Unless otherwise stated the results shown in this test report refer only to the sample(s) tested.

Attention: To check the authenticity of testing /inspection report & certificate, please contact us at telephone: (86-755) 8307 1443, or email: [CN.Doccheck@sgs.com](mailto:CN.Doccheck@sgs.com)