

SWS-6000

Online Hemodiafiltration Equipment



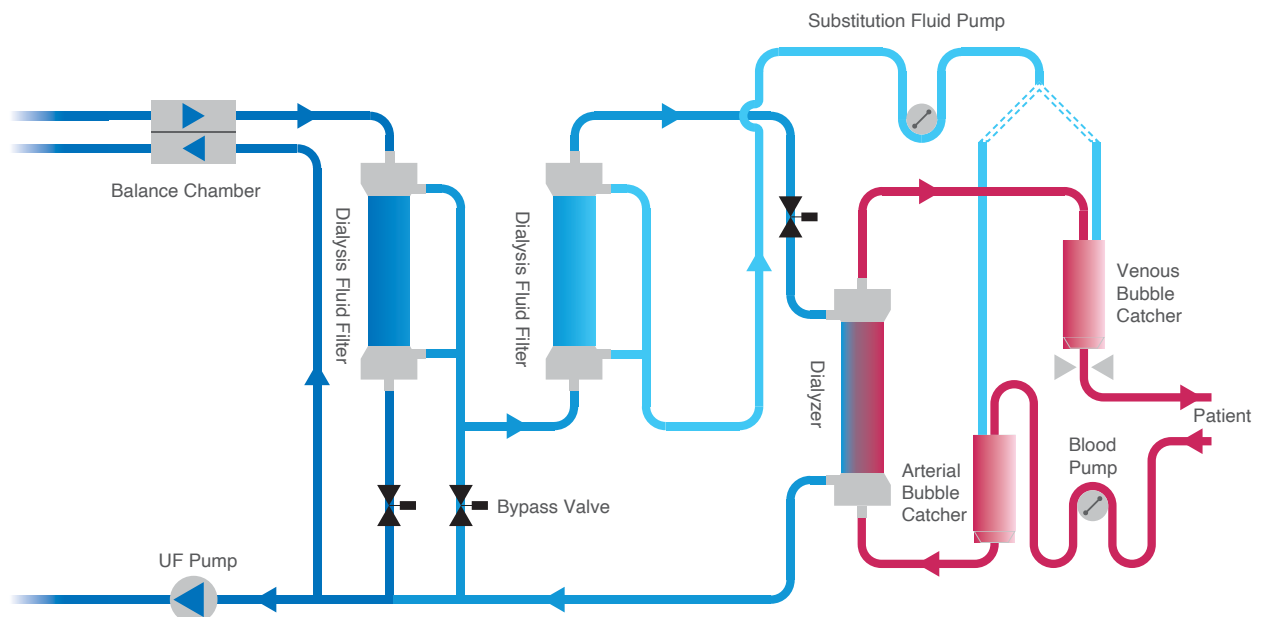
Online HDF

Improve the Quality of Life for Dialysis Patients

SWS-6000

update to: Online HDF is a treatment much closer to renal metabolism. Studies have shown that all-cause mortality is reduced by one third compared to HD, improving patient survival rate and quality of life.

- Online HDF can be used for online production of high quality sterile replacement fluid
- Greater removal coverage of large, medium, and small molecules of the toxin
- Mitigate microinflammation
- Create stable hemodynamics
- Improve the nutritional status
- Increase of patient survival rate and reduction cardiovascular damage
- Improve the response to erythropoietin



Our latest generation of HDF machines ensures the safety of dialysis procedures

The safety of the treatment is assured

- Integration of the air detector, venous clamp, and blood identification into a single design. Use of ultrasonic and optical sensors to continuously monitor for microbubbles and identify the presence of blood.
- * **Online, noninvasive blood pressure monitoring can track patients' heart rate and blood pressure changes in real-time, allowing for direct communication with the monitoring device and ensuring patient safety throughout the treatment process.**
- The advanced balance volume feedback and control system ensures precise operation of the UF (ultrafiltration) unit.
- The dialysate mixing feedback and control system ensures accurate ion concentration.

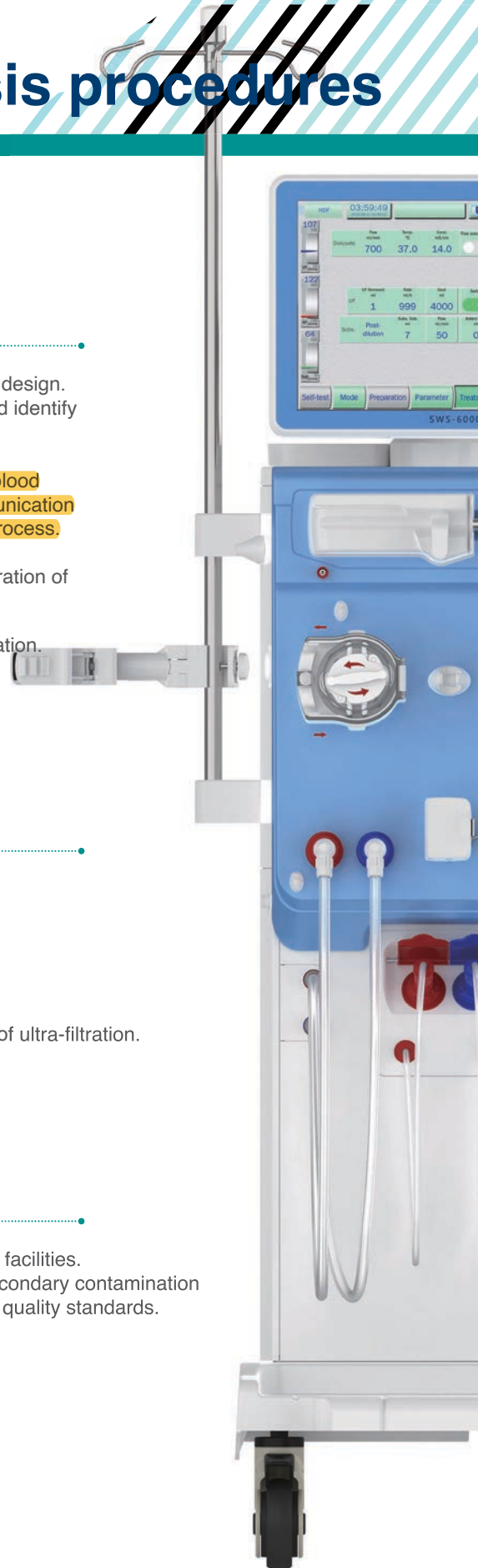
Secure self-assessment

- Autonomous management of the hydraulic, blood and monitoring systems ensures the safety of the treatment process.
- Over 10 mandatory self-assessments, such as:
Balance system, fluid mixing system, UF system, blood circulation system...
- The balance system conducts real-time leak detection to guarantee the precision of ultra-filtration.

Cost-effective

- * • A centralized supply system for concentrate fluid is highly favored in large dialysis facilities. This approach minimizes the need for manual handling and reduces the risk of secondary contamination of the concentrate, thereby enhancing operational efficiency and maintaining high quality standards.
- Utilize online substitution fluid for priming and reinfusion, eliminating the need for bag-type saline, and ensuring a fully automated process.

* optional features

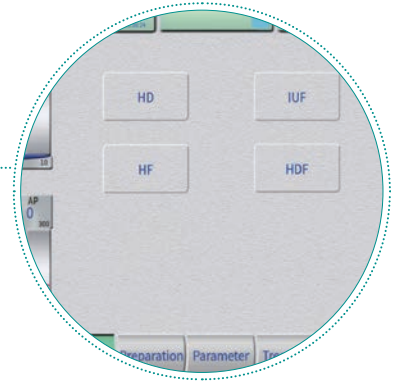


Intelligent Design



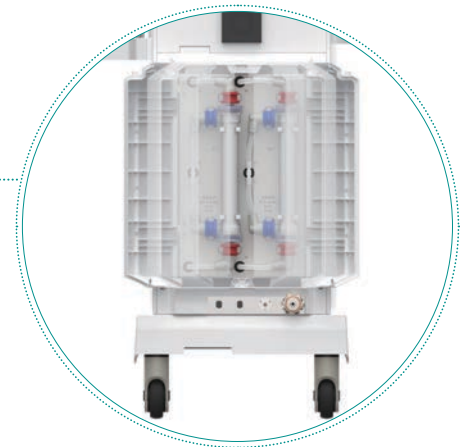
User-friendly

- The user manual, self-assessment, parameter configuration, treatment procedures, and cleaning and disinfection features are prominently presented for ease of use.
- Multi-tiered authorization: Distinct permission levels are allocated to physicians, nursing staff and engineers to guarantee proper functioning and safety of treatments.
- The adjustable screen offers an expansive view, allowing for easy access to items from tray.



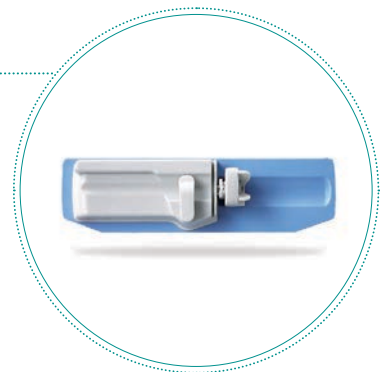
Easy Maintenance

- The front cabinet cover features an auto-locking design that allows for quick access, thereby reducing maintenance time.
- The remaining cabinet doors utilize knobs and screws, allowing for easy disassembly without the need for tools.
- The electric circuit board features a modular, card-style design that allows for easy disassembly and maintenance.
- The magnetic lock and French door design facilitate the straightforward replacement of the dual-stage endotoxin filters.

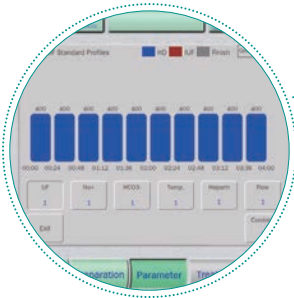


Enhanced Functionality

- Compatible with all brands of dialysis consumables, offering a range of dialysate formulations along with customized options, suitable for different concentrates and disinfectants.
- Versatile Heparin Pump: Automatically recognizes syringe sizes (10ml, 20ml, 30ml, 50ml), and supports heparin profiling.

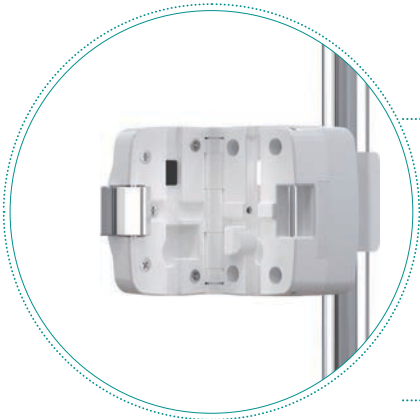


Clinical Treatment



Customized approaches for various profiles

- Various Sodium Profile
- Heparin Flow Profile
- UF Rate Profile
- Dialysate Flow Profile
- Bicarbonate Profile
- Dialysate Temperature Profile



* BVM

- Changes in blood volume can be precisely monitored throughout the treatment, helping to effectively avert hypotension that may arise from excessive fluid removal.

* RCM

- Continuous tracking of urea clearance effectiveness to guarantee adequate treatment.



* Bicart Holder

- Isolation of microbial contamination of B concentrate to ensure the purity of the dialysate and improve the quality of treatment.

Expert Technical Solutions

- Our professional technical services team is dedicated to delivering prompt responses to hospital inquiries and needs. With the ability to offer solutions within 12-hours, they ensure a seamless user experience backed by a dependable technical support.
- Complimentary Ongoing Training: SWS provides regular training sessions at no cost for medical personnel, aimed at enhancing their understanding of machine operations and improving their responsiveness in emergency situations.

