

EC Declaration of Conformity

No. of certificate : No 20131114-DCSP001

Manufacturer's Name : SOMETECH INC.



Manufacturer's Address : (Ace High-end Tower II, Guro-dong) 1201ho, 61, Digital-ro 26gil,
Seoul Korea

declares, that the product

Product Name : Medical camera system

Model Name :VES-100 (LED)

Classification Class I

(according to the Rule 9 of Classification Criteria, annex IX,
MDD 93/42/EEC)

Applicable Harmonized - EN 60601-1 [1990] Medical electrical equipment

Standard Part1: General requirements

- EN 60601-1-2 [2001] Medical electrical equipment

Part1: General requirements Section1.2 Collateral standard:
Electromagnetic compatibility

The product herewith complies with the requirements of the MD Directive 93/42/EEC and carries
the "CE" mark accordingly.



Seoul, Korea Nov 14, 2018

Sometech Inc.
A handwritten signature in blue ink, appearing to read "Hee-Bong Yang".
Hee-Bong Yang / President

(President, on behalf of Sometech Inc.)



www.digikey.com
Orders 1-218-681-7979
Fax 1-218-681-3380

CERTIFICATE OF COMPLIANCE

701 Brooks Ave. South, P.O. Box 677, Thief River Falls, MN 56701-0677 USA

Sold To:

ERICON SRL
DURLESTI, STR. VASILE LUPU, 6
DURLESTI MD-2003
MOLDOVA

Salesorder	Invoice	Customer	Purchase Order	Date	Page	MSC #
54193936	62062945	10833795		27-MAR-2019	1	0

A68N

Quantity	Item Number/Information	Manufacturer
2	CERMAX PE175BFA COUNTRY/ORIGIN: USA	EXCELITAS TECHNOLOGIES [CI]

The Digi-Key products included in the above shipment were purchased from the original manufacturer or through the manufacturer's authorized distribution. The original manufacturer warrants and certifies that the products they produce meet their specifications. Test reports (chemical, physical, electrical, etc.) supporting their certification are on file (either here or in the plant of the manufacturer) and will be made available upon request. This document is evidence of Conformity that this shipment meets the requirements of Digi-Key's Quality Management System and/or Purchase Order requirements agreed on between the customer and Digi-Key.

This certification is valid only to the original customer and is not transferable.

If you have any questions, please contact Customer Service at 800-858-3616.

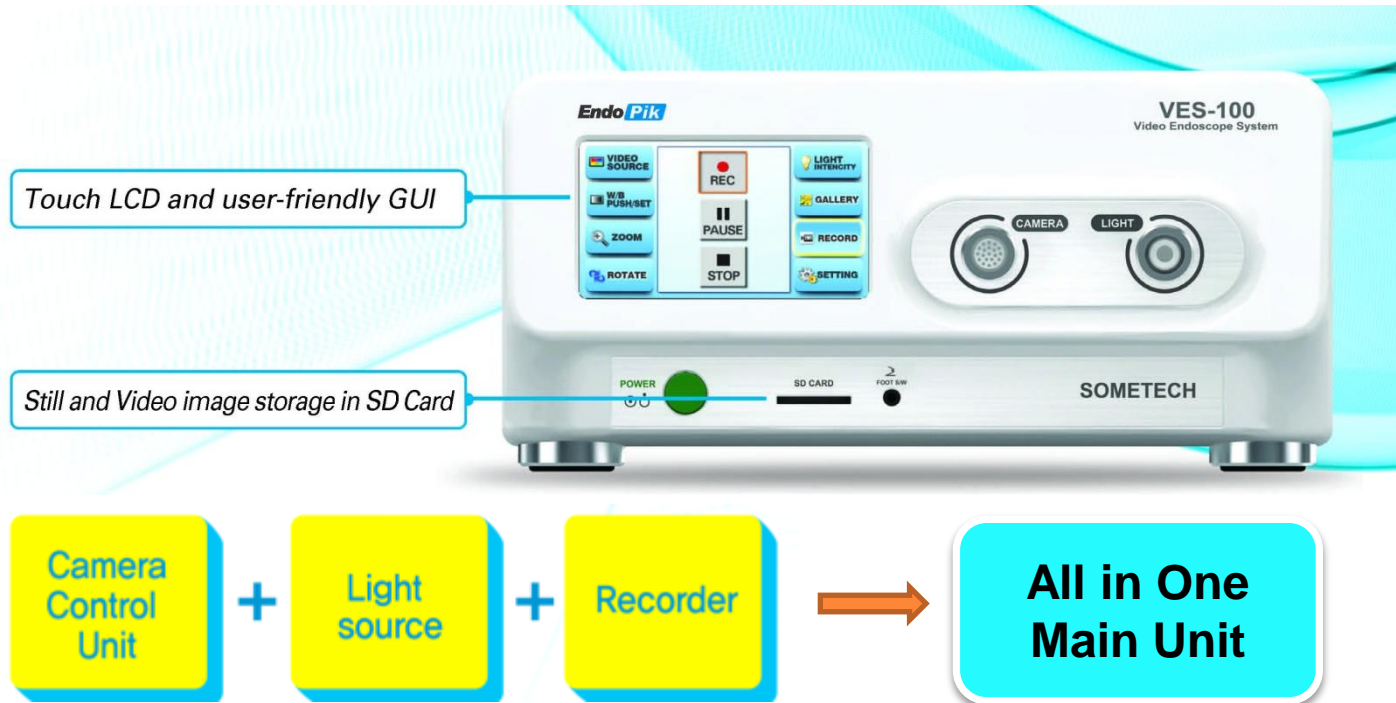
Kim Gilbert, Director, Customer Service



VES-100

Video Endoscopy System (Endo Pik)

Benefits - Main Unit



- ✓ **Main Unit Integrates Camera Control, Light Source and Recorder all in One System!**
- ✓ **User Friendly UI with LCD Touch Screen**
- ✓ **Images and Videos Can Be Saved to External SD Card**
- ✓ **LED Light Source is Brighter than Xenon 300 Watt Light**
- ✓ **HDMI and USB 3.0 Output**

Benefits - Camera Head



Durable coupler & convenient button

Compatible with Rigid Endoscopes



- ✓ **Crystal Clear Image with FULL HD 1080P Resolution**
- ✓ **Easy Zooming Up To 2x Magnification**
- ✓ **Convenient focusing by button**
- ✓ **Compact Camera Head for Easy Handling**



Crystal clear image [FULL HD]



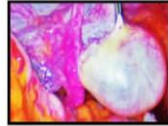
Application



Scope

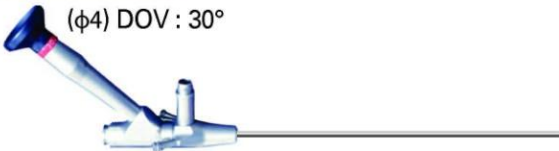
Laparoscope

($\phi 5, \phi 10$) DOV : 0°, 30°



Spinescope

($\phi 4$) DOV : 30°



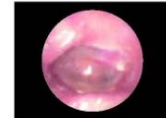
Hysteroscope

($\phi 4$) DOV : 0°, 30°



ENT

- **Otoscope** ($\phi 2.7$) DOV : 0°, 30°



- **Sinusscope** ($\phi 2.7, \phi 4$) DOV : 0°, 30°



- **Laryngoscope** ($\phi 8$) DOV : 70°, 90°

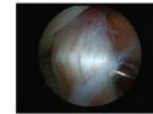


Arthroscope

- ($\phi 1.9$) DOV : 30°



- ($\phi 2.7$) DOV : 30°



- ($\phi 4$) DOV : 30°



✓ Various Scopes can be attached via Universal Coupler

Accessories

Light Guide Cable

SDHC Memory Card 32G Class 10

Foot Switch

USB keyboard(optional)

Scope

- Laparoscope
- Spinescope
- Otoscope
- Sinusscope
- Laryngoscope
- Hysteroscope
- Athroscope



- Zoom-In, Zoom-out
- Convenient Focusing
- Freeze / Live image convertible



Application

OB/GYN

Hysterectomy / Urine Myoma / Endometriosis / Cervical Cancer /
Ovarian Tumor / Infertility Procedures / Pelvic Lymphadenectomy

G/S

Cholecystectomy / Proctocolectomy / Pancreas / Colorectal Cancer /
Nissen Fundoplication / Colectomy / Gastric Cancer

Urology

Renal Extirpation / Renal Cancer / Renal Cyst / Radical Prostatectomy /
Nephrectomy and Partial Nephrectomy / Pelvic Floor Reconstruction /
Pyeloplasty / Ureteral Cancer

Specification

Item	Section	Specification
Main Unit	Size	Width(310mm) x Height(140mm) x Depth(310mm)
	Power	Main Power: 85~264V, AC Max 100W, Universal AC Input / Full range Soft Power: Software Controlled, Power On/Off Action for System Stability
	Video Out	HDMI, 1920x1080I/60 ,1920x1080P/30
	Storage	SDHC, Standard 32G USB 2.0 Memory Storage
	GUI	5inch TFT LCD Touch Screen
	Recording	MPEG-4/H.264, File Extension *.AVI
	Image Capture	JPG, 1920x1080
	Light Source	White LED Cold Light, 6500° K

Specification

Item	Section	Specification
Camera	Size	Width(40mm) x Height(48mm) x Depth(50mm)
	Resolution	FULL-HD
	Coupler	Rigid Endoscope Compatible
	Cable Length	Camera Cable - 3 Meters Light Source Cable - 3.5 Meters
Scope	Laparoscope	(Φ5, Φ10)DOV:30°
	Spinescope	(Φ4)DOV:30°
	Otoscope	(Φ2.7)DOV:0°, 30°
	Sinusscope	(Φ2.7, Φ4)DOV:0°, 30°
	Laryngoscope	(Φ8)DOV:70°, 90°
	Hysteroscope	(Φ4)DOV:0°, 30°

Specification

Item	Section	Specification
Main Unit Menu	Video Source	Color, Bright, Contrast, Sharpness, Exposure Area, Exposure Level, Gamma Level, Default Load
	White Balance	White Balance & Push Set Focusing
	Zoom	Digital Zoom 1.0x ~2.0X (200%)
	Image Rotate	Normal (0') , Rotate(180' & flip)
	Light Intensity	Step : 0 (Off)~ 10(Max)
	Gallery View	Record, Play/Stop/Fast Play(x2 <<,>>), Delete, Copy, Rename, PageUp, PageDown, Home, End
	Settings	Target Storage, Format SDHS/USB, Recoding Resolution, Clock

Endo **Pik**

VIDEO ENDOSCOPY SYSTEM

VES-100



Advanced
"ALL IN ONE SYSTEM"

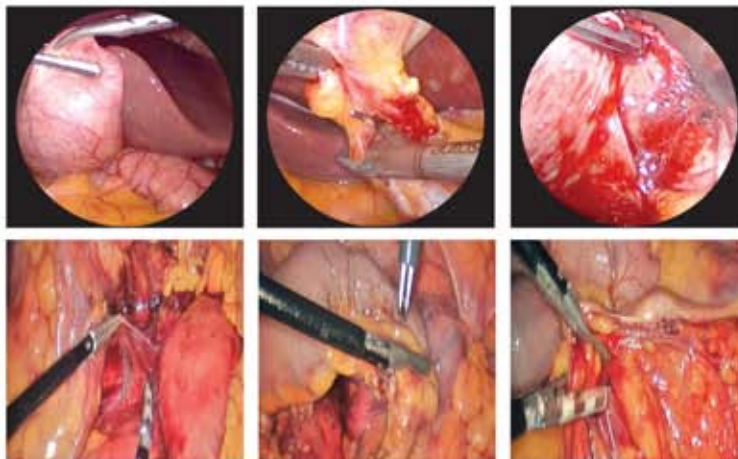
CCU + Light source + Recorder + Camera + Scope

ALL IN ONE SYSTEM!

CCU + Light source + Recorder + Camera + Scope



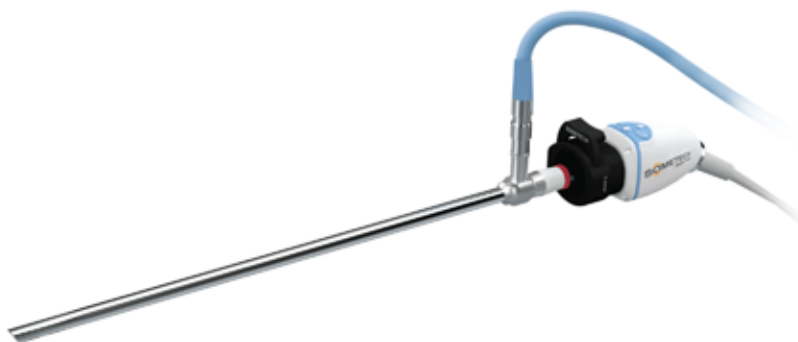
Main Features



- All in one system (CCU + Light source + Recorder)
- Saving cost based on " All in one system "
- Power LED light source brighter than Xenon 300W
- Saving images into SD card or HDD
- Touch LCD and Intuitive GUI for users



Camera



- Crystal clear FULL HD(1080P) resolution
- Durable and convenient button on camera head
- Easy zooming and fine focusing by button on camera head
- Compact and small camera head
- Water proof camera



One touch Coupler

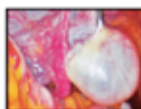


Focus ▲/▼, Zoom IN/OUT, Capture button

Scope

Laparoscope

- (φ5,φ10) DOV : 0°,30° L:3,502mm



Hysteroscope

- (φ4) DOV : 0°,30° L:3,020mm



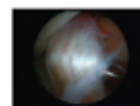
Spinoscope

- (φ6.3) DOV : 30° L:1,810mm

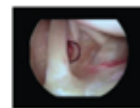


Arthroscope

- (φ1.9) DOV : 30° L:1,020mm



- (φ2.7) DOV : 30° L:1,100mm



- (φ4) DOV : 30° L(1,755mm, 3,020mm)



E.N.T

- Otoscope (φ2.7) DOV : 0°,30° L(55mm, 107,5mm)



- Sinusscope (φ2.7,φ4) DOV : 0°,30° L:175mm



- Laryngoscope (φ8) DOV : 70°,90° L(170mm,174mm)



- High quality scopes for major applications
- Rigid and safe to patients
- Various diameter and length for each applications

System Specification

Main unit

Category	Specification
SIZE(WxDxV)	310mm×300mm×150mm
Voltage/Frequency	AC 100 ~ 240V , 50 /60 Hz
Video output	HDMI
Video source	Color, Brightness, Contrast, Sharpness, Exposure area, Exposure level.
White balance	Push set
Zoom	Digital Zoom (1.0 X ~2.0 X)
Image rotate	180°
GUI interface	TFT Color LCD
Light cable length	3.5M
Light source	White LED(Cold light)
Light intensity	80,000 Lux at 115mm
Light adjustment	0(OFF) 1 ~10 (Level Adjustment, 10= Max)
Life time	60,000 hours
Color temperature	6800 K
Still image capture	Full HD(1920X1080) jpg
Video recording	MP4(H.264),Avi
Storage media	SDHC / USB2.0

Camera

Category	Specification
Resolution	FULL HD 1920 x 1080P
Sensor	1/3" CMOS sensor
Camera & Coupler	Water proof camera head and C-Mount coupler
Sterilization	Low temperature Sterilization (E.O Gas, Plasma, Chemicals)
Cable length	3.5M

Contents of this catalogue may be different from the real product subject to the changes in designs and specification. All rights of product and design are reserved to Sometech.Inc.