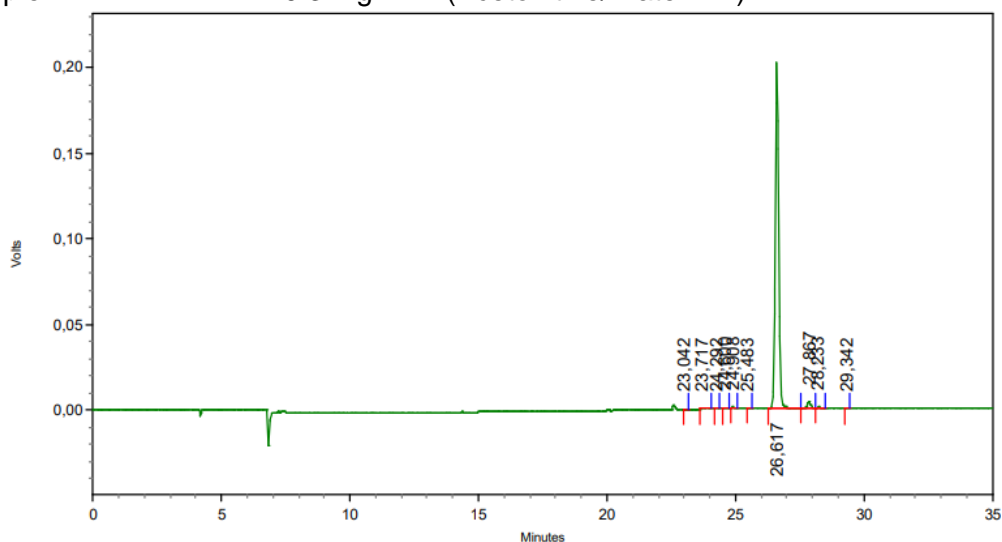


HPLC-Method

Article 685221
 Lot-No. 828407
 Column L=250mm, ID=4.6mm; Luna-Omega C18, 100A, 5µm
 Eluent A Acetonitrile
 Eluent B 0.1 % Phosphoric acid (Water)
 Gradient
 time %A %B
 0min 0 100
 22.5min 90 10
 25min 90 10
 Flow 1.0 ml min-1
 Detector UV-220nm
 Injection-Volume 5 µl
 Sample 0.3 mg ml-1 (Acetonitrile/Water 1:1)



Detector A - 1 (220nm)

| Retention Time | Height | Area | Area Percent |
|----------------|--------|---------|--------------|
| 23,042 | 52 | 376 | 0,02 |
| 23,717 | 131 | 1051 | 0,06 |
| 24,292 | 71 | 391 | 0,02 |
| 24,600 | 312 | 1982 | 0,11 |
| 24,908 | 526 | 3247 | 0,19 |
| 25,483 | 20 | 183 | 0,01 |
| 26,617 | 202824 | 1686102 | 96,55 |
| 27,867 | 3827 | 43392 | 2,48 |
| 28,233 | 893 | 9146 | 0,52 |
| 29,342 | 63 | 464 | 0,03 |

| Totals | Height | Area | Area Percent |
|--------|--------|---------|--------------|
| | 208719 | 1746334 | 100,00 |

Exemplary chromatogram of given method.

| Version | Article | Lot | Reason for Change | Date |
|---------|---------|--------|-------------------|-------------|
| 1 | 685221 | 828407 | Initial Version | 29 Oct 2024 |