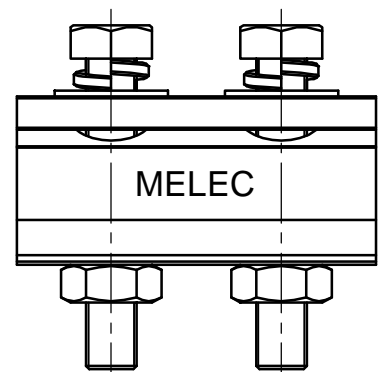
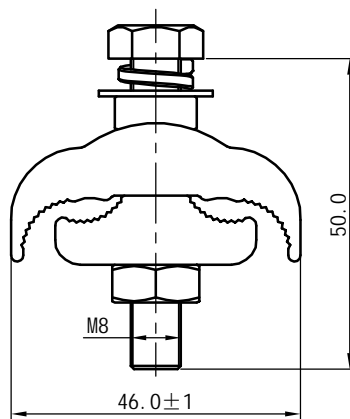
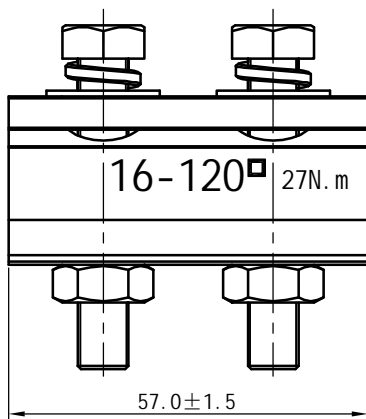


Rev.	Change Description	Designed	Checked	Approved
B1	Original Release	谢博 2016/3/28		



Technical Detail:

1. Material:

Body: Al-Alloy, bright Surface.

Bolts: steel 8.8, dacromet

Nuts: steel 8, dacromet

Spring washer (Flat & Conical): Steel, dacromet

Pressure rod: Al-Alloy.



JIANGSU JIAMENG  
ELECTRICAL EQUIPMENT CO.,LTD  
江苏嘉盟电力设备有限公司

Material	/	Undefined Tolerance		Title: Aluminium Parallel Groove Connector
Approved by	於海燕 2016/3/28	0~30	±1	
Checked by	顾丽霞 2016/3/28	>30~120	±2	Product No.: JBL-A16-120/2&D8.8/M
Designed by	谢博 2016/3/28	>120	±3	Drawing No.: T1JBL-A16-120/2&D8.8/M
Size A4	Scale NTS		Sheet 1 of 1	Unit mm