

DATA SHEETS



DELL WIRELESS
KEYBOARD AND
MOUSE

KM3322W

Stay productive everyday
with a reliable wireless combo
that's been built to last.



KM3322W



Essential Productivity

Full-sized, the keyboard comes with a number pad and dedicated multimedia keys for convenient number input and multimedia controls. The 1000 DPI mouse with scroll wheel allows you to navigate with ease.



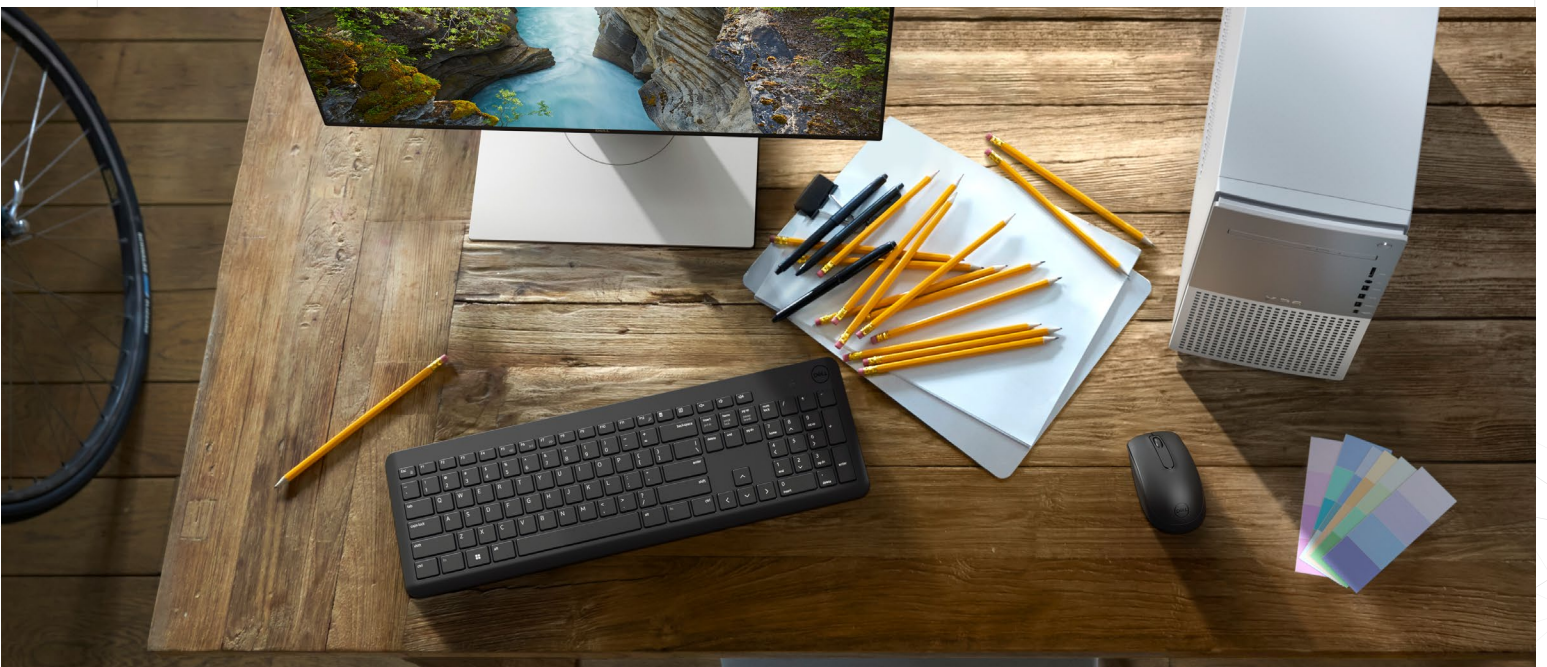
Built to last

The keyboard and mouse combo offers one of industry's leading battery lives lasting for 36 months¹ for keyboard and 18 months¹ for mouse, giving you absolute peace of mind.



Thoughtfully designed

The keyboard is spill resistant and can withstand accidental splashes and spills. It's anti-fading keys ensure that the letters and numbers on your keyboard remain intact over time. The tilt legs on your keyboard give you the flexibility to adjust to your most comfortable typing position.



KM3322W

The Confidence to work anywhere.

The wireless keyboard and mouse combo connects easily to your Dell PC. Enhance your workday experience with long-lasting battery life as well as spill-resistant keyboard with anti-fade keys.



• • •
Tested and certified to work seamlessly with Dell systems

• • •
Easy to use with either hand

• • •
128-bit AES (Advanced Encryption Standard) encryption on keyboard helps protect your data transmission across your PCs and devices, providing you with a secure connection while typing.

• • •
Advanced Exchange Service gets you a replacement combo shipped the next business day should your existing one become faulty within the 3-year warranty period.



DELL WIRELESS KEYBOARD AND MOUSE

KM3322W

FEATURE TECHNICAL SPECIFICATION

MODEL Dell Wireless Keyboard and Mouse KM3322W

COLOR Black

CONNECTIVITY Wireless - 2.4GHz (USB receiver)

BATTERY LIFE 36 months for Keyboard and 18 months for Mouse¹

OS SUPPORT 2.4GHz- Windows 7, Windows 8.1,10 and 11; Mac;
Linux 6.x; Chrome; Android OS

SOFTWARE N/A

WARRANTY 3-year Advanced Exchange Service²

PACKAGE CONTENT Keyboard & Mouse
USB Receiver
Batteries (Keyboard 2 x AAA / Mouse 1 x AA)
Documentation

**LANGUAGE/
PRODUCT AVAILABILITY** **NA & LATAM**
English-US, Latin American
APJ
English-US, Thai, English-International (India)
EMEA
English-International, English-UK, French, German,
Italian, Bulgarian, Swiss French/German, Portuguese,
Spanish, Estonian, Greek, Arabic, Russian, Ukraine,
Turkish, Turkish (F-Type), Czech, Hungarian, Adriatic,
Slovakian, Hebrew, Romanian, Belgium, Kazakhstan,
Pan-Nordic

MODEL Mouse

SENSOR Optical LED

SCROLL Mechanical

RESOLUTION (DPI) 1000

BUTTONS 3

DIMENSIONS Height: 1.53 inches (38.87 mm)
Length: 4.13 inches (104.9 mm)
Width: 2.3 inches (58.32mm)

**WEIGHT (WITHOUT
BATTERIES)** 0.13 lbs (57.8 g)

MODEL Keyboard

SPILL RESISTANT KEYBOARD Yes

KEY TYPE Anti-fade plunger keys

PROGRAMMABLE KEYS N/A

MULTIMEDIA KEYS 3 Multimedia Keys (Vol+, Vol-, Speaker Mute)

TILT LEG Yes

DIMENSIONS Height: 1.01 inches (25.3)
Length: 17.6 inches (444.92)
Width: 5.56 inches (141.22mm)

**WEIGHT (WITHOUT
BATTERIES)** 1.1 lbs (497.12 g)

SECURITY 128-bit AES encryption

Product availability varies by country. Contact your Dell representative or visit [Dell.com](https://www.dell.com) to learn more.

1. Based on Dell analysis of battery life usage model calculations, Oct. 2021. Results vary depending on use, operating conditions, and other factors.

2 Replacement part/unit dispatched, if needed, following completion of phone/online diagnosis. Fee charged for failure to return defective unit. Availability varies.

© 2022 Dell Inc. or its subsidiaries. All rights reserved. Dell Technologies, Dell, EMC, Dell EMC and other trademarks are trademarks of Dell Inc. or its subsidiaries. Other trademarks may be trademarks of their respective owners.

DELL DOCK: WD19S 130 W

Potencie su productividad.



LA CARGA MÁS RÁPIDA

Aumente la potencia de la PC con ExpressCharge™ en la estación de acoplamiento USB-C® más potente del mundo.



MAYOR PRODUCTIVIDAD

Realice su mejor trabajo de manera más rápida con una estación de acoplamiento que ofrece la capacidad de conectarse a monitores y periféricos con una sola conexión a la PC.



DISEÑO LISTO PARA EL FUTURO

Evolucione a medida que cambian sus necesidades gracias a la primera estación de acoplamiento modular del mundo con energía y conectividad actualizables.¹



ADMINISTRACIÓN INTELIGENTE

Trabaje sin interrupciones utilizando un solo firmware en nuestras estaciones de acoplamiento con la mayor facilidad de administración.

Trabaje a toda velocidad.

Potencie su productividad.

Las estaciones de acoplamiento comerciales de Dell aumentan la productividad para los usuarios finales, ya que facilitan la conexión a sus PC y las cargan más rápido que cualquier otra estación de acoplamiento disponible². Nuestras estaciones de acoplamiento ofrecen la mayor compatibilidad con todas las laptops comerciales de Dell y son fáciles de implementar, administrar y actualizar, de modo que el personal de TI puede tener más tranquilidad. Las estaciones de acoplamiento WD19S también son compatibles con las laptops de otros fabricantes, como HP y Lenovo, que admiten los estándares de la industria para el acoplamiento USB-C³. Para las limitaciones funcionales con laptops de otros fabricantes en comparación con las laptops comerciales de Dell, consulte este [artículo de soporte](#).



LA CARGA MÁS RÁPIDA

Aumente el suministro de energía y cargue el sistema más rápidamente con una estación de acoplamiento que ofrece hasta 90 vatios de alimentación, lo que permite una carga del 80 % en una hora con Dell ExpressCharge^{TM4}. Realice más tareas con mayor velocidad gracias a Dell ExpressChargeTM Boost, una función que proporciona hasta un 35 % de carga en solo 20 minutos⁵ en los sistemas compatibles.



MAYOR PRODUCTIVIDAD

Mejore su productividad con la estación de acoplamiento USB-C más potente del mundo. La tecnología USB-C ofrece velocidades de transferencia de datos de hasta 10 Gb/s y admite hasta cuatro pantallas Full HD para que pueda trabajar de manera más eficiente.



ADMINISTRACIÓN INTELIGENTE

Optimize la implementación y la administración de todas las estaciones de acoplamiento de la familia, independientemente de su conectividad, con un solo firmware. La compatibilidad con las estaciones de acoplamiento de Dell se habilita de fábrica en el BIOS de nuestras laptops. Realice actualizaciones de firmware en minutos sin necesidad de reiniciar el sistema. De esta manera, los usuarios finales podrán continuar trabajando sin interrupciones.



SOPORTE

Las estaciones de acoplamiento comerciales de Dell incluyen una garantía de hardware limitada de tres años con Advanced Exchange⁶. Si el cliente tiene un problema que no se puede solucionar por teléfono, Dell enviará una estación de acoplamiento de reemplazo al siguiente día laboral. Dell ofrece a los clientes la opción de extender esta garantía hasta 4 o 5 años por un costo adicional.

Accesorios recomendados

DELL DOCK: WD19S 130W



MOUSE Y TECLADO INALÁMBRICOS PARA MÚLTIPLES DISPOSITIVOS DELL PREMIER: KM7321W

Realice múltiples tareas sin inconvenientes en tres dispositivos con esta combinación de teclado de tamaño completo y mouse contorneado de primera calidad con accesos directos programables y duración de la batería de 36 meses.⁷



MONITOR DELL ULTRASHARP 27 4K USB-C: U2720Q

Experimente un color verdadero y una claridad sorprendente en este monitor 4K de 27" con una amplia cobertura de color. Este monitor VESA DisplayHDR™ 400 cuenta con InfinityEdge prácticamente sin bordes y conectividad USB-C con una entrega de alimentación de hasta 90 W.



KIT DE MONTAJE PARA LA ESTACIÓN DE ACOPLAMIENTO DE DELL: MK15

Monte la estación de acoplamiento comercial de Dell detrás del monitor compatible o debajo del escritorio para crear un entorno de trabajo organizado.

Diseño listo para el futuro

Dell ofrece la primera estación de acoplamiento modular del mundo con conectividad y alimentación actualizables. Dado que facilita la actualización de la conectividad y el aumento del suministro de alimentación para satisfacer las necesidades futuras del cambiante entorno de PC, puede reducir considerablemente los costos de actualización.

MÓDULO DE ESTACIÓN DE ACOPLAMIENTO DELL THUNDERBOLT™ WD19TBS

¿Necesitará más potencia en el futuro? Realice una actualización al módulo WD19TBS para obtener conectividad Thunderbolt con un máximo de 130 W de suministro de alimentación, velocidades de transferencia de datos de 40 Gb/s y compatibilidad con hasta tres pantallas a una fracción del costo que implica reemplazar la estación de acoplamiento completa.



Características y especificaciones técnicas

DELL DOCK: WD19S 130W

Característica	Especificaciones técnicas	Característica	Especificaciones técnicas
Tipo de producto	Estación de acoplamiento	Sistemas operativos	Microsoft Windows 10 Ubuntu 18.04 Red Hat Enterprise Linux
Soporte para pantalla	<u>Para una PC HBR2*</u> 2 FHD de 60 Hz 1 QHD de 60 Hz 1 4K de 30 Hz <u>Para una PC HBR3</u> 3 FHD de 60 Hz 2 QHD de 60 Hz 1 4K de 60 Hz	Administración de sistemas	vPro inalámbrico compatible con laptop o estación de trabajo
Resolución máxima	3840 x 2160 de 60 Hz	Interfaz de acoplamiento	USB-C
Interfaces de video	2 DP 1.4 de tamaño completo 1 HDMI 1 MFDP USB-C	Longitud del cable	1,0 m
Puertos USB	3 USB-A 3.1 de 1.ª generación 2 USB-C 3.1 de 2.ª generación	Dirección MAC	Dirección MAC de paso
Redes	Gigabit Ethernet	Garantía	Garantía de hardware limitada por 3 años con Advanced Exchange Garantía adicional de 4 y 5 años opcional
Tipo de ranura de seguridad (el candado de cable se vende por separado)	1 ranura para candado Kensington 1 ranura para candado Noble Wedge	Características de administración	Arranque PXE Wake-On-LAN Dirección MAC de paso Deshabilitación de puertos Botón Wake-On-Dock Wake-On-Dock Dell Command Update (DCU) Mensajes de error y notificaciones de eventos de la estación de acoplamiento
Indicadores LED	LED del adaptador de alimentación LED del botón de encendido LED de RJ45	Contenido de la caja	1 estación de acoplamiento WD19S con cable USB-C conectado 1 adaptador de alimentación de 130 W
Alimentación	Adaptador de alimentación de CA de 130 vatios con suministro de alimentación de hasta 90 vatios Suministro de alimentación de hasta 90 vatios a sistemas que no son Dell		
Dimensiones	205 mm x 90 mm x 29 mm 8,07 in x 3,54 in x 1,14 in		
Peso de la estación de acoplamiento (sin adaptador de alimentación)	585 g 1,29 lb		





DELL DOCK: WD19S 130W

Potencie su productividad.

* HBR (velocidad alta de bits) es un estándar DisplayPort que determina el ancho de banda disponible para las pantallas. Consulte las especificaciones de su laptop para identificar la versión de HBR.

1 Información basada en análisis internos de Dell, febrero de 2019.

2 Información basada en análisis internos de Dell de productos de la competencia a partir de información a disposición pública en febrero de 2019. Suministro de alimentación de hasta 130 W cuando se utiliza con sistemas Dell compatibles. ExpressCharge™ Boost está disponible en sistemas Dell selectos.

3 Las estaciones de acoplamiento Dell USB-C y Thunderbolt™ admiten laptops que han implementado especificaciones de la industria de USB-C o Thunderbolt™.

Para la funcionalidad USB-C, las laptops que no son de Dell deben admitir la entrega de alimentación USB 2.0 (o superior) para la entrega de alimentación de hasta 90 W, USB 3.2 (o superior) para hasta 10 Gb/s de transferencia de datos y DisplayPort™ modo alternativo para la salida de video.

Para la funcionalidad de Thunderbolt™, las laptops que no son de Dell deben admitir la entrega de alimentación USB 2.0 (o superior) para la entrega de alimentación de hasta 90 W y Thunderbolt™ 3 (o superior) para hasta 40 Gb/s de transferencia de datos y de video.

El botón de encendido para encender el sistema, la transferencia de dirección MAC, la estación de acoplamiento Wake-on y las características Wake-on-LAN solo funcionan en las laptops de Windows comerciales de Dell. La utilidad de actualización de firmware funciona con sistemas con SO Windows. El transporte de varias transmisiones para monitores (computadoras de escritorio extendidas) no es compatible con las PC Apple. Las estaciones de acoplamiento USB-C de Dell solo se mostrarán en modo clonado. Visite la página de soporte de su laptop que no es de Dell para determinar la compatibilidad.

4 Con el software Dell Power Manager, al seleccionar ExpressCharge™, puede recargar la batería del sistema de 0 % a 80 % en 60 minutos. Una vez que la carga alcance el 80 % de la capacidad, la velocidad de carga volverá a ser la normal. Se recomienda el uso con el adaptador de alimentación de Dell provisto. No se recomienda el uso con adaptadores de alimentación de una capacidad menor. El tiempo de carga puede variar +/-10 % en función de la tolerancia del sistema.

5 Al seleccionar el modo predeterminado de Adaptive Charge o ExpressCharge™ en el software Dell Power Manager, la batería del sistema se puede recargar de 0 % a 35 % en un lapso de 20 minutos cuando el sistema está apagado y la temperatura de la batería se encuentra entre 16 °C y 45 °C. Con el modo ExpressCharge™ activado, la batería del sistema puede seguir cargándose hasta un 80 % en 60 minutos. Una vez que la carga alcance el 80 % de la capacidad, la velocidad de carga volverá a ser la normal. Se recomienda el uso con el adaptador de alimentación de Dell provisto. No se recomienda el uso con adaptadores de alimentación de una capacidad menor. El tiempo de carga puede variar +/-10 % en función de la tolerancia del sistema.

6 La estación de acoplamiento de reemplazo del servicio Advanced Exchange se enviará, si es necesario, después de que se realice el diagnóstico en línea o por vía telefónica. Se cobrará una tarifa en caso de que no se devuelva la unidad defectuosa. Consulte dell.com/servicecontracts.

7 Información basada en análisis internos de Dell acerca de los cálculos del modelo de uso de duración de la batería, noviembre de 2020. Los resultados pueden variar según el uso, las condiciones operativas y otros factores.

La disponibilidad de los productos varía según el país. Comuníquese con su representante de Dell para obtener más información.

© 2021 Dell Inc. o sus filiales. Todos los derechos reservados. Dell Technologies, Dell, EMC, Dell EMC y otras marcas comerciales son propiedad de Dell Inc. o sus filiales. Las demás marcas comerciales pueden pertenecer a sus respectivos propietarios. USB Type-C® y USB-C® son marcas registradas del USB Implementers Forum.

Núm. de ID: G21000009



LATITUDE

5330/5430/5530

Work anywhere on
our most scalable and
sustainable Latitude.



LATITUDE

5330/5430/5530

Work anywhere on our most scalable¹ and sustainable Latitude.

Designed with versatility for any business with intelligent performance, outstanding screen experience and built-in security and privacy options.

Ideal for Accountants, Call Center Reps, Finance, IT, etc. driven to produce results and strive for efficiency. They need the highest security and scalable performance offerings for desk productivity with the flexibility to work remotely.



The world's smallest commercial mainstream PC²
Small and versatile with even more features you expect from our most scalable Latitude.

New intelligent privacy features: Onlooker Detection – alerts you of onlookers and protects data on screen. You can texturize screen or enable **SafeScreen** if available.
Look-away Detect – knows when you're not looking at screen & dims for privacy and battery savings.

USB Type C & Thunderbolt 4
Dual USB Type C with Thunderbolt 4 ports are standard, HDMI 2.0, RJ45 (14"/15") and more.

Run cooler & quieter
New larger fans across the series plus patented dual opposite outlet fans (14"/15") improve cooling.

Power for more of your work available **Intel vPro® with 12th Gen Intel® up to Core™ i7 P-series (28W)**. Offering up to 64GB DDR memory, storage up to 2TB, and both dual storage & discrete graphics options on 15".

WiFi6E & 4G LTE options
Stay connected at your desk or on-the-go.

ExpressSign-in
Wake your system when you approach and lock it when you step away.

Intelligent Audio with neural noise cancellation
Collaborate confidently with AI-based background noise elimination.

Displays for every user
Options including ComfortView Plus Low Blue Light; max your battery life with super low power panels; 4K UHD 400 nit on 15"; touch privacy on 14"; 2-in-1 with Gorilla Glass on 13" and more.

Utilize 2 or more networks at once with **ExpressConnect, world's 1st simultaneous multi-network connection** for faster data and video downloads¹⁹.

Outstanding run-time plus charge faster with ExpressCharge
Multiple battery options up to 58 Whr and next generation SLP Panels.

Our most sustainable Latitude Series
Latitude 5000 were the 1st PCs to use bio-based material - 21% in the lid, 39% in the bottom bumpers; Plus more sustainable parts inside - 28% ocean-bound plastic fan housing case & 50% recycled plastic material in the battery frame.³⁶

Enterprise-level world's most secure, serviceability & durability Passes **MIL-STD 810H** tests. 13" available as laptop or 2-in-1 with same BIOS and model number.

New 100% recycled or renewable packaging³⁷. Easy to open, uses less carbon to ship.

See important information on last page

LATITUDE

5330/5430/5530

Sustainability on Dell Latitude

Leading the industry in sustainable practices in our products, packaging and supply chain.

**OUR MOST SUSTAINABLE LATITUDE PORTFOLIO:
WORKING TOWARD OUR GOALS, SO YOU CAN MEET YOURS.**



Packaging Innovation

100%

Recycled or renewable packaging across all new Latitude PCs. Easy-to-open and uses less carbon to ship. It's the 1st design that already meets our 2030 moonshot goals.³⁷

Design

1st

Latitude 5000 were the 1st PCs to use reclaimed carbon fiber and tree-based bioplastic²².

Recycling e-waste



Securely, responsibly retire your IT equipment with Dell regardless of brand, in support of a circular economy. Learn more at Dell.com/Recycle.

LATITUDE HAS

90+

EPEAT registered products²¹



100%

EPEAT Gold in 2022 products



35+

TCO 8 certified configurations



8.0

ENERGY STAR[®] throughout the portfolio



See important information on last page

LATITUDE

5330/5430/5530

Dell Optimizer

We make it intelligent. You make it yours.

Dell Optimizer revolutionizes the way you work by fueling the world's most intelligent PCs²⁴. It is a business, AI-based optimization software that learns and responds to the way you work and is designed to automatically improve application performance, battery run-time, audio settings and privacy - all in the background while you're working.

Accomplish anything with built-in intelligence that learns and adapts.



Intelligent privacy anywhere

Onlooker detection lets you texturize your screen when an intruder is detected, and Look Away Detect darkens the PC screen based on user behavior.



Extended power

ExpressCharge analyzes your power usage habits to improve PC battery utilization, extend run time, and charge your system faster.



Unmatched connectivity

ExpressConnect²⁸ provides the world's first simultaneous multi-network connection²⁹ that joins the best network³⁰ available.



Faster sign-in

ExpressSign-in's²⁵ proximity sensor detects your presence to wake on approach before Windows Hello logs you in via facial recognition.



Enhanced audio

Intelligent Audio delivers audio and mic enhancements and reduces background noise using Neural noise cancellation.



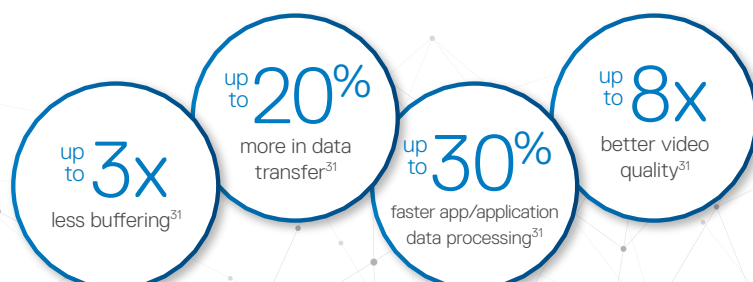
Improved performance

ExpressResponse²⁶ analyzes how you use your preferred apps²⁷ to boost performance.



Simplified manageability

Elevate work experience with an easy-to-manage application that provides a seamless experience for both end-users and IT decision-makers.



See important information on last page



RECOMMENDED SOLUTIONS



**Dell 27 USB-C HUB Monitor
- P2723DE**

Stay productive no matter where you work with this sleek 27" GHD hub monitor with ComfortView Plus.



**Dell Thunderbolt 4 Dock
- WD22TB4**

Experience lightning fast charging and Thunderbolt 4 connectivity with this flexible and powerful modular dock.



Dell Pro Wireless Keyboard and Mouse - KM5221W

Enhance your everyday productivity with a quiet full-size keyboard and mouse combo that offers programmable shortcuts and 36 months battery life.³⁸



Dell USB-C Mobile Adapter - DA310

Compact and portable 7-in-1 USB-C mobile adapter provides superb video, data connectivity and up to 90W power pass-through to your PC.



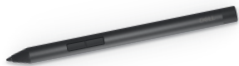
Dell Pro Wireless Headset - WL5022

Work from anywhere with this Bluetooth Teams certified headset that lets you switch seamlessly to your PC or smartphone and enjoy crystal clear audio on the go.



Dell Speakerphone - SP3022

Experience rich and clear audio with this intelligent Microsoft Teams certified speakerphone.



Dell Active Pen - PN5122W

Write naturally and precisely with this multi-protocol, high sensitivity active pen for our 2-in-1s.



Dell EcoLoop Pro Backpack - CP5723

An eco-conscious backpack for protection on-the-go.



Dell Mobile Pro Wireless Mouse - MS5120W

Connect your mouse conveniently via 2.4GHz wireless or Bluetooth and enhance your productivity with programmable shortcut buttons.

5330/5430/5530

FEATURE	TECHNICAL SPECIFICATION	TECHNICAL SPECIFICATION	TECHNICAL SPECIFICATION
MODEL NUMBER¹	Latitude 5330 (laptop or 2-in-1)	Latitude 5430 (laptop)	Latitude 5530 (laptop)
PROCESSOR OPTIONS¹	12 th Gen Intel® Core™ processors up to i7 U15 vPro®	11 th Gen Intel® Core™ processors up to i5 U15 vPro® 12 th Gen Intel® Core™ processors up to i7 U15 vPro®	11 th Gen Intel® Core™ processors up to i5 U15 vPro® 12 th Gen Intel® Core™ processors up to i7 U15 vPro® 12 th Gen Intel® Core™ processors up to i7 P28 vPro®
OPERATING SYSTEM¹	Microsoft® Windows 10 Pro 64-bit (11 License) Microsoft® Windows 11 Home 64-bit Microsoft® Windows 11 Pro 64-bit Ubuntu® 20.04 LTS, 64-bit (Laptop only)	Microsoft® Windows 10 Pro 64-bit (11 License) Microsoft® Windows 11 Home 64-bit Microsoft® Windows 11 Pro 64-bit Ubuntu® 20.04 LTS, 64-bit NeoKylin	Microsoft® Windows 10 Pro 64-bit (11 License) Microsoft® Windows 11 Home 64-bit Microsoft® Windows 11 Pro 64-bit Ubuntu® 20.04 LTS, 64-bit NeoKylin
MEMORY OPTIONS^{1,2,3}	Up to 32GB DDR4 (on board) 3200MHz	Up to 64GB DDR4 (socketed) 3200MHz	Up to 64GB DDR4 (socketed) 3200MHz
CHIPSET¹	Integrated with the processor	Integrated with the processor	Integrated with the processor
INTEL RESPONSIVENESS TECHNOLOGIES^{1,7}	Intel® Rapid Storage Technology	Intel® Rapid Storage Technology	Intel® Rapid Storage Technology
GRAPHICS^{1,8}	Intel® Iris® Xe Graphics with Intel® Core™ i5/i7 processors Intel UHD Graphics with Intel® Core™ i3 processor	Intel® Iris® Xe Graphics with Intel® Core™ i5/i7 processors and dual-channel memory configuration Intel UHD Graphics with Intel® Core™ i3 processor or single channel memory	Optional NVIDIA® GeForce® MX450 (2 GB DDR6 dedicated) Intel® Iris® Xe Graphics with Intel® Core™ i5/i7 processors and dual-channel memory configuration Intel UHD Graphics with Intel® Core™ i3 processor or single channel memory
DISPLAY¹	2-in-1 13.3" FHD (1920 x 1080) Anti Glare, 16x9, 300 nits, Gorilla Glass 6 DXC, Active Pen Support, WVA, 72% NTSC Laptop 13.3" FHD (1920 x 1080) Anti Glare, 16x9, Non-touch, WVA, 250 nits, 45% NTSC 13.3" FHD (1920 x 1080) Anti Glare, 16x9, Touch, WVA, 300 nits, 72% NTSC 13.3" FHD (1920 x 1080) Anti Glare, 16x9, Non-touch, 400 nits, WVA, Super Low Power, ComfortView Plus Low Blue Light, sRGB 100%	Laptop 14" HD (1366 x 768) Anti Glare, 16x9, Non-touch, TN, 220 nits, 45% NTSC 14" FHD (1920 x 1080) Anti Glare, 16x9, Non-touch, WVA, 250 nits, 45% NTSC 14" FHD (1920 x 1080) Anti Glare, 16x9, Touch, WVA, 300 nits, 100%, NTSC 14" FHD (1920 x 1080) Anti Reflective/Anti Smudge, Non-touch, WVA, Super Low Power, ComfortView Plus Low Blue Light, 400 nits, sRGB 100% 14" FHD (1920 x 1080) Anti Glare, 16x9, Touch, Digital Privacy SafeScreen, WVA, 300 nits, sRGB 100%	Laptop 15.6" HD (1366x768) Anti Glare, 16x9, Non-touch, TN, 220 nits, 45% NTSC 15.6" FHD (1920x1080) Anti-Glare, 16x9, Non-touch, WVA, 250nits, 45% NTSC 15.6" FHD (1920x1080) Anti-Glare, 16x9, Touch, WVA, 250nits, 45% NTSC 15.6" FHD (1920x1080) Anti-Glare, 16x9, Non-touch, WVA, Super Low Power, ComfortView Plus Low Blue Light, 400nits, sRGB 100% 15.6" UHD (3840x2160) Anti-Glare, 16x9, Non-touch, WVA, Super Low Power, ComfortView Plus Low Blue Light, 400nits, sRGB 100%
STORAGE OPTIONS^{1,3}	up to 1 TB, M.2, PCIe, SSD, Class 35 256 GB, M.2, PCIe NVMe, SED, Class 35 2 TB, M.2, PCIe NVMe, SSD, Class 40 up to 1 TB, M.2, PCIe NVMe, SED, Class 40	up to 1 TB, M.2, PCIe, SSD, Class 35 256 GB, M.2, PCIe NVMe, SED, Class 35 2 TB, M.2, PCIe NVMe, SSD, Class 40 up to 1 TB, M.2, PCIe NVMe, SED, Class 40	up to 1 TB, M.2, PCIe, SSD, Class 35 256 GB, M.2, PCIe NVMe, SED, Class 35 2 TB, M.2, PCIe NVMe, SSD, Class 40 up to 1 TB, M.2, PCIe NVMe, SED, Class 40
SECURITY¹	TPM 2.0 FIPS 140-2 Certified, TCG Certified Optional Windows Hello Compliant Fingerprint Reader in power button Optional Security Hardware Authentication Bundles 1: Touch Fingerprint Reader (in Power Button) with Control Vault 3.0 Advanced Authentication with FIPS 140-2 Level 3 Certification 2: Contacted Smart Card with Control Vault 3.0 Advanced Authentication with FIPS 140-2 Level 3 Certification 3: Touch Fingerprint Reader (in Power Button) and Contacted Smart Card with Control Vault 3.0 Advanced Authentication with FIPS 140-2 Level 3 Certification 4: Contacted Smart Card, Contactless Smart Card NFC and Control Vault 3.0 Advanced Authentication with FIPS 140-2 Level 3 Certification 5: Touch Fingerprint Reader (in Power Button), Contacted Smart Card, Contactless Smart Card NFC and Control Vault 3.0 Advanced Authentication with FIPS 140-2 Level 3 Certification Optional Face IR camera (Windows Hello compliant) with ExpressSign-in (Camera Sensing) Optional Intelligent Privacy (onlooker detection with screen texturizing and adaptive dimming) Camera Shutter Dell Client Command Suite: On-Prem Dell Client Command Suite: Cloud Dell Optimizer Dell Power Manager Support Assist for PCs Support Assist OS Recovery (Excalibur) Dell SafeBIOS - Off Host Verification Dell SafeBIOS - Indicators of Attack	TPM 2.0 FIPS 140-2 Certified, TCG Certified Optional Windows Hello Compliant Fingerprint Reader in power button Optional Security Hardware Authentication Bundles 1: Touch Fingerprint Reader (in Power Button) with Control Vault 3.0 Advanced Authentication with FIPS 140-2 Level 3 Certification 2: Contacted Smart Card with Control Vault 3.0 Advanced Authentication with FIPS 140-2 Level 3 Certification 3: Touch Fingerprint Reader (in Power Button) and Contacted Smart Card with Control Vault 3.0 Advanced Authentication with FIPS 140-2 Level 3 Certification 4: Contacted Smart Card, Contactless Smart Card NFC and Control Vault 3.0 Advanced Authentication with FIPS 140-2 Level 3 Certification 5: Touch Fingerprint Reader (in Power Button), Contacted Smart Card, Contactless Smart Card NFC and Control Vault 3.0 Advanced Authentication with FIPS 140-2 Level 3 Certification Optional Face IR camera (Windows Hello compliant) with ExpressSign-in (Camera Sensing) Optional Intelligent Privacy (onlooker detection with screen texturizing and adaptive dimming) Camera Shutter Optional SafeScreen Dell Client Command Suite: On-Prem Dell Client Command Suite: Cloud Dell Optimizer Dell Power Manager Support Assist for PCs Support Assist OS Recovery (Excalibur) Dell SafeBIOS - Off Host Verification Dell SafeBIOS - Indicators of Attack	TPM 2.0 FIPS 140-2 Certified, TCG Certified Optional Windows Hello Compliant Fingerprint Reader in power button Optional Security Hardware Authentication Bundles 1: Touch Fingerprint Reader (in Power Button) with Control Vault 3.0 Advanced Authentication with FIPS 140-2 Level 3 Certification 2: Contacted Smart Card with Control Vault 3.0 Advanced Authentication with FIPS 140-2 Level 3 Certification 3: Touch Fingerprint Reader (in Power Button) and Contacted Smart Card with Control Vault 3.0 Advanced Authentication with FIPS 140-2 Level 3 Certification 4: Contacted Smart Card, Contactless Smart Card NFC and Control Vault 3.0 Advanced Authentication with FIPS 140-2 Level 3 Certification 5: Touch Fingerprint Reader (in Power Button), Contacted Smart Card, Contactless Smart Card NFC and Control Vault 3.0 Advanced Authentication with FIPS 140-2 Level 3 Certification 6: Fingerprint Reader (on Palmrest) and Contacted Smart Card with Control Vault 3.0 Advanced Authentication with FIPS 140-2 Level 3 Certification Optional Face IR camera (Windows Hello compliant) with ExpressSign-in (Camera Sensing) Optional Intelligent Privacy (onlooker detection with screen texturizing and adaptive dimming) Camera Shutter Dell Client Command Suite: On-Prem Dell Client Command Suite: Cloud Dell Optimizer Dell Power Manager Support Assist for PCs Support Assist OS Recovery (Excalibur) Dell SafeBIOS - Off Host Verification Dell SafeBIOS - Indicators of Attack

5330/5430/5530

FEATURE TECHNICAL SPECIFICATION

MODEL NUMBER¹	Latitude 5330 (laptop or 2-in-1)
SECURITY¹ (CONT)	Dell SafeID Vmware Carbon Black Endpoint Standard Vmware Carbon Black Endpoint Advanced Vmware Carbon Black Endpoint Enterprise Absolute Visibility Absolute Control Absolute Resilience Dell Encryption Personal Dell Encryption Enterprise Netskope Cloud Access Security Broker (CASB) Netskope Secure Web Gateway Netskope Private Access
DOCKING¹	<i>(Docks are optional, sold separately)</i> Dell Thunderbolt™ Dock - WD19TBS Dell Thunderbolt™ Dock - WD22TB4 Dell Performance Dock - WD19DCS Dell USB-C Dock - WD19S Dell Universal Dock D6000/ D6000S Dell Dual Charge Dock - HD22Q (May 2022)
MULTIMEDIA¹	HD Camera, Temporal Noise Reduction, Camera Shutter FHD + IR Camera, Temporal Noise Reduction, Camera Shutter, ExpressSign-in™ FHD + IR Camera + Proximity Sensor, Temporal Noise Reduction, Camera Shutter, ExpressSign-in™, Intelligent Privacy, Ambient (laptop only) Light sensor 2 x High Quality Speakers 2 x Noise Canceling Microphones Waves MaxxAudio Pro Intelligent Audio with Neural Noise Cancellation Universal Audio jack No Camera / No Microphone Options Available
BATTERY OPTIONS¹⁶	3 cell 41 Whr Polymer , ExpressCharge 1.0™, ExpressCharge Boost™ & Long Life Cycle capable 4 cell 58 Whr Polymer , ExpressCharge 1.0™, ExpressCharge Boost™ & Long Life Cycle capable
POWER OPTIONS¹	60W adapter, Type-C 65W adapter, Type-C 90W adapter, Type-C
CONNECTIVITY OPTIONS¹	Microsoft Modern Standby Compliant Wireless LAN Options⁸: Intel® Wi-Fi 6E (6GHz) AX211 2x2 + Bluetooth 5.2 Realtek RTL 8822CE 2x2 Wi-Fi 5, Bluetooth 5.0 MediaTek MT7921 Wi-Fi 6, Bluetooth 5.0 Intel® Wi-Fi 6 AX201 2x2 802.11ax 160MHz, Bluetooth 5.1 No wireless card installed option available Mobile Broadband Options^{8,10}: Intel® XMM™ 7360 LTE Advanced Cat 9 WWAN (DW5820e) (eSIM capable) Intel® XMM™ 7360 LTE Advanced Cat 9 WWAN (DW5820e) China, Turkey Intel® XMM™ 7360 LTE Advanced Cat 9 WWAN (DW5820e) T-Mobile, AT&T, Verizon, US only
PORTS, SLOTS & CHASSIS¹	2x USB Type C Thunderbolt™ 4.0 with Power Delivery & DisplayPort 2x USB 3.2 Gen (1 with Power share) 1x HDMI 2.0 1x external uSIM card tray (optional) - eSim capable 1x uSD 4.0 Memory card reader 1x Contacted SmartCard Reader (optional) 1x Touch Fingerprint Reader in Power Button (optional) Universal Audio Jack Wedge Shaped Lock slot

TECHNICAL SPECIFICATION

MODEL NUMBER¹	Latitude 5430 (laptop)
SECURITY¹	Dell SafeID Vmware Carbon Black Endpoint Standard Vmware Carbon Black Endpoint Advanced Vmware Carbon Black Endpoint Enterprise Absolute Visibility Absolute Control Absolute Resilience Dell Encryption Personal Dell Encryption Enterprise Netskope Cloud Access Security Broker (CASB) Netskope Secure Web Gateway Netskope Private Access
DOCKING¹	<i>(Docks are optional, sold separately)</i> Dell Thunderbolt™ Dock - WD19TBS Dell Thunderbolt™ Dock - WD22TB4 Dell Performance Dock - WD19DCS Dell USB-C Dock - WD19S Dell Universal Dock D6000/ D6000S Dell Dual Charge Dock - HD22Q (May 2022)
MULTIMEDIA¹	HD Camera, Temporal Noise Reduction, Camera Shutter FHD + IR Camera, Temporal Noise Reduction, Camera Shutter, ExpressSign-in™ FHD + IR Camera + Proximity Sensor, Temporal Noise Reduction, Camera Shutter, ExpressSign-in™, Intelligent Privacy, Ambient Light sensor 2 x High Quality Speakers 2 x Noise Canceling Microphones Waves MaxxAudio Pro Intelligent Audio with Neural Noise Cancellation Universal Audio jack No Camera / No Microphone Options Available
BATTERY OPTIONS¹⁶	3 cell 41 Whr Polymer , ExpressCharge 1.0™, ExpressCharge Boost™ & Long Life Cycle capable 4 cell 58 Whr Polymer , ExpressCharge 1.0™, ExpressCharge Boost™ & Long Life Cycle capable
POWER OPTIONS¹	60W adapter, Type-C 65W adapter, Type-C 90W adapter, Type-C
CONNECTIVITY OPTIONS¹	Microsoft Modern Standby Compliant Wireless LAN Options⁸: Intel® Wi-Fi 6E (6GHz) AX211 2x2 + Bluetooth 5.2 Realtek RTL 8822CE 2x2 Wi-Fi 5, Bluetooth 5.0 MediaTek MT7921 Wi-Fi 6, Bluetooth 5.0 Intel® Wi-Fi 6 AX201 2x2 802.11ax 160MHz, Bluetooth 5.1 No wireless card installed option available Mobile Broadband Options^{8,10}: Intel® XMM™ 7360 LTE Advanced Cat 9 WWAN (DW5820e) (eSIM capable) Intel® XMM™ 7360 LTE Advanced Cat 9 WWAN (DW5820e) China, Turkey Intel® XMM™ 7360 LTE Advanced Cat 9 WWAN (DW5820e) T-Mobile, AT&T, Verizon, US only
PORTS, SLOTS & CHASSIS¹	2x USB Type C Thunderbolt™ 4.0 with Power Delivery & DisplayPort 2x USB 3.2 Gen (1 with Power share) 1x HDMI 2.0 1x external uSIM card tray (optional) - eSim capable 1x uSD 4.0 Memory card reader 1x Contacted SmartCard Reader (optional) 1x Touch Fingerprint Reader in Power Button (optional) Universal Audio Jack Wedge Shaped Lock slot RJ45

TECHNICAL SPECIFICATION

MODEL NUMBER¹	Latitude 5530 (laptop)
SECURITY¹	Dell SafeID Vmware Carbon Black Endpoint Standard Vmware Carbon Black Endpoint Advanced Vmware Carbon Black Endpoint Enterprise Absolute Visibility Absolute Control Absolute Resilience Dell Encryption Personal Dell Encryption Enterprise Netskope Cloud Access Security Broker (CASB) Netskope Secure Web Gateway Netskope Private Access
DOCKING¹	<i>(Docks are optional, sold separately)</i> Dell Thunderbolt™ Dock - WD19TBS Dell Thunderbolt™ Dock - WD22TB4 Dell Performance Dock - WD19DCS Dell USB-C Dock - WD19S Dell Universal Dock D6000/ D6000S Dell Dual Charge Dock - HD22Q (May 2022)
MULTIMEDIA¹	HD Camera, Temporal Noise Reduction, Camera Shutter FHD + IR Camera, Temporal Noise Reduction, Camera Shutter, ExpressSign-in™ FHD + IR Camera + Proximity Sensor, Temporal Noise Reduction, Camera Shutter, ExpressSign-in™, Intelligent Privacy, Ambient Light sensor 2 x High Quality Speakers 2 x Noise Canceling Microphones Waves MaxxAudio Pro Intelligent Audio with Neural Noise Cancellation Universal Audio jack No Camera / No Microphone Options Available
BATTERY OPTIONS¹⁶	3 cell 41 Whr Polymer , ExpressCharge 1.0™, ExpressCharge Boost™ & Long Life Cycle capable 4 cell 58 Whr Polymer , ExpressCharge 1.0™, ExpressCharge Boost™ & Long Life Cycle capable
POWER OPTIONS¹	60W adapter, Type-C 65W adapter, Type-C 90W adapter, Type-C
CONNECTIVITY OPTIONS¹	Microsoft Modern Standby Compliant Wireless LAN Options⁸: Intel® Wi-Fi 6E (6GHz) AX211 2x2 + Bluetooth 5.2 Realtek RTL 8822CE 2x2 Wi-Fi 5, Bluetooth 5.0 MediaTek MT7921 Wi-Fi 6, Bluetooth 5.0 Intel® Wi-Fi 6 AX201 2x2 802.11ax 160MHz, Bluetooth 5.1 No wireless card installed option available Mobile Broadband Options^{8,10}: Intel® XMM™ 7360 LTE Advanced Cat 9 WWAN (DW5820e) (eSIM capable) Intel® XMM™ 7360 LTE Advanced Cat 9 WWAN (DW5820e) China, Turkey Intel® XMM™ 7360 LTE Advanced Cat 9 WWAN (DW5820e) T-Mobile, AT&T, Verizon, US only
PORTS, SLOTS & CHASSIS¹	2x USB Type C Thunderbolt™ 4.0 with Power Delivery & DisplayPort 2x USB 3.2 Gen (1 with Power share) 1x HDMI 2.0 1x external uSIM card tray (optional) - eSim capable 1x uSD 4.0 Memory card reader 1x Contacted SmartCard Reader (optional) 1x Touch Fingerprint Reader in Power Button (optional) 1x Touch FIPS Fingerprint Reader in Palmrest (optional) Universal Audio Jack Wedge Shaped Lock slot RJ45

5330/5430/5530

FEATURE	TECHNICAL SPECIFICATION	TECHNICAL SPECIFICATION	TECHNICAL SPECIFICATION
MODEL NUMBER¹	Latitude 5330 (laptop or 2-in-1)	Latitude 5430 (laptop)	Latitude 5530 (laptop)
DIMENSIONS & WEIGHT^{1,5}	Width: 12.04" / 305.7 mm Height: 0.67" / 16.92 mm Depth: 8.17" / 207.5 mm Screen to Body: 79.4% Laptop Starting Weight: 2.65 lbs / 1.2 kg 2-in-1 Starting Weight: 2.9 lbs / 1.32 kg	Width: 12.65" / 321.35 mm Height: 0.76" / 19.3 mm Depth: 8.35" / 212 mm Screen to Body: 82.1% Starting Weight: 3.01 lbs / 1.36 kg	Width: 14.09" / 357.8 mm Height: 0.82" / 20.77 mm Depth: 9.19" / 233.3 mm Screen to Body: 83.1% Starting weight: 3.5 lbs / 1.59 kg
REGULATORY AND ENVIRONMENTAL COMPLIANCE¹	Regulatory Model Number: Laptop P138G ; 2-in-1 P139G Regulatory Type Number: Laptop P138G002 ; 2-in-1 P139G002 ENERGY STAR compliant configurations available EPEAT Gold Registered. For specific country participation and rating, please see www.epeat.net TCO compliant configurations available Trade Agreements Acts (TAA) configurations available Halogen-Free / Arsenic-Free BFR / PVC free ⁹	Regulatory Model Number: P137G Regulatory Type Number: P137G005 / P137G006 ENERGY STAR compliant configurations available EPEAT Gold Registered. For specific country participation and rating, please see www.epeat.net TCO compliant configurations available Trade Agreements Acts (TAA) configurations available Halogen-Free / Arsenic-Free BFR / PVC free ⁹	Regulatory Model Number: P104F Regulatory Type Number: P104F005 / P104F006 ENERGY STAR compliant configurations available EPEAT Gold Registered. For specific country participation and rating, please see www.epeat.net TCO compliant configurations available Trade Agreements Acts (TAA) configurations available Halogen-Free / Arsenic-Free BFR / PVC free ⁹
INPUT¹	Optional 10-Finger Touch Display Microsoft® Precision Clickpad Spill Resistant Non-Backlit Keyboard Spill Resistant Backlit Keyboard Dell Premier Rechargeable Active Pen - PN7522W (optional, sold separately, 2-in-1 only) Dell Active Pen - PN5122W (optional, sold separately, 2-in-1 only)	Optional 10-Finger Touch Display Microsoft® Precision Clickpad Spill Resistant Non-Backlit Keyboard Spill Resistant Backlit Keyboard	Optional 10-Finger Touch Display Microsoft® Precision Clickpad Spill Resistant Non-Backlit Keyboard Spill Resistant Backlit Keyboard
SENSORS¹	All: Hall Effect Sensor, Sensor Hub. Gyroscope + Accelerometer on Laptops with Proximity Camera and on all 2-in-1s: Adaptive Thermal Performance (when Gyroscope/Accelerometer present). Added with Proximity Camera: Ambient Light Sensor, Windows Auto Brightness, IR User Proximity Detection. Added with 2-in-1: Digital Compass (Magnetometer), Screen Rotation support, Proximity for SAR compliance (with WWAN module) Near Field Proximity Sensor.	All: Hall Effect Sensor, Sensor Hub. Added with Proximity Camera: Gyroscope + Accelerometer, Ambient Light Sensor, Windows Auto Brightness, IR User Proximity Detection. Adaptive Thermal Performance (when Gyroscope/Accelerometer present).	All: Hall Effect Sensor, Sensor Hub. Added with Proximity Camera: Gyroscope + Accelerometer, Ambient Light Sensor, Windows Auto Brightness, IR User Proximity Detection. Adaptive Thermal Performance (when Gyroscope/Accelerometer present).
SYSTEMS MANAGEMENT¹	Intel® vPro™ Technology (iAMT 12) (optional, requires Intel WiFi® Link WLAN and a vPro compatible processor), Dell Client Command Suite available (dell.com/command), Factory Installed Dell Client Command Update, Dell Command Power Manager Dell Optimizer	Intel® vPro™ Technology (iAMT 12) (optional, requires Intel WiFi® Link WLAN and a vPro compatible processor), Dell Client Command Suite available (dell.com/command), Factory Installed Dell Client Command Update, Dell Command Power Manager Dell Optimizer	Intel® vPro™ Technology (iAMT 12) (optional, requires Intel WiFi® Link WLAN and a vPro compatible processor), Dell Client Command Suite available (dell.com/command), Factory Installed Dell Client Command Update, Dell Command Power Manager Dell Optimizer
WARRANTY AND SERVICE¹	Limited Hardware Warranty ⁴ , Standard 3 year Mail-in Service after Remote Diagnosis ¹¹ , optional 3, 4 and 5 year hardware warranty extensions, and 3-5 year Dell ProSupport contracts available ¹²	Limited Hardware Warranty ⁴ , Standard 3 year Mail-in Service after Remote Diagnosis ¹¹ , optional 3, 4 and 5 year hardware warranty extensions, and 3-5 year Dell ProSupport contracts available ¹²	Limited Hardware Warranty ⁴ , Standard 3 year Mail-in Service after Remote Diagnosis ¹¹ , optional 3, 4 and 5 year hardware warranty extensions, and 3-5 year Dell ProSupport contracts available ¹²
PERIPHERAL ECOSYSTEM¹	Wide range of accessories designed and tested for the Latitude 5320 enable productivity when working remote, on the go or in the office.	Wide range of accessories designed and tested for the Latitude 5320 enable productivity when working remote, on the go or in the office.	Wide range of accessories designed and tested for the Latitude 5320 enable productivity when working remote, on the go or in the office.
SUSTAINABILITY	Biobased material in rubber feet and lid Post-consumer recycled plastic in lid, battery frame, palmrest, fan housing, inner frame. Recycled Carbon Fiber in the lid and bottom cover Packaging made from 100% recycled or renewable materials (coming later CY22)	Biobased material in rubber feet and lid Post-consumer recycled plastic in lid, battery frame, palmrest, fan housing, inner frame. Recycled Carbon Fiber in the lid and bottom cover Packaging made from 100% recycled or renewable materials (coming later CY22)	Biobased material in rubber feet and lid Post-consumer recycled plastic in lid, battery frame, palmrest, fan housing, inner frame. Recycled Carbon Fiber in the lid and bottom cover Packaging made from 100% recycled or renewable materials (coming later CY22)

Product Disclosures:

- 1 Offering may vary by country and by configuration and operating system.
 - 2 A 64-bit operating system is required to support 4GB or more of system memory.
 - 3 GB means 1 billion bytes and TB equals 1 trillion bytes; actual capacity varies with preloaded material and operating environment and will be less.
 - 4 Limited Hardware Warranty: For copy of Limited Hardware Warranty, write Dell USA LP, Attn: Warranties, One Dell Way, Round Rock, TX 78682 or see www.dell.com/warranty.
 - 6 The stated Watt Hour (Whr) is not an indication of battery life.
 - 7 Intel Rapid Storage Technology requires a HDD, mSATA, or an SSD, as primary storage device and Windows OS required
 - 8 Wireless antenna available only at time of system purchase.
 - 9 Dell Latitude 5330/5430/5530 are brominated flame retardant free (BFR-free) and polyvinyl chloride free (PVC-free); meeting the definition of BFR-/PVC-free as set forth in the iNEMI Position Statement on the 'Definition of Low-Halogen Electronics (BFR-/CFR-/PVC-free)': Plastic parts contain less than 1,000 ppm (0.1%) of bromine (if the Br source is from BFRs) and less than 1,000 ppm (0.1%) of chlorine (if the Cl source is from CFRs or PVC or PVC copolymers). All printed circuit board (PCB) and substrate laminates contain bromine/chlorine total less than 1,500 ppm (0.15%) with a maximum chlorine of 900 ppm (0.09%) and maximum bromine being 900 ppm (0.09%).
 - 10 4G LTE antenna and 5G available only at time of system purchase. Mobile Broadband Subject to service provider's broadband subscription and coverage area; additional charges apply.
 - 11 Mail-in Service after Remote Diagnosis: Remote Diagnosis is determination by online/phone technician of cause of issue; may involve customer access to inside of system and multiple or extended sessions. If issue is covered by Limited Hardware Warranty (www.dell.com/warranty) and not resolved remotely, technician and/or part will be dispatched, usually within 1 business day following completion of Remote Diagnosis. Availability varies. Other conditions apply.
 - 12 Dell Services: Availability and terms of Dell Services vary by region. For more information, visit www.dell.com/servicesdescriptions.
 - 13 GB means 1 billion bytes and TB equals 1 trillion bytes; significant system memory may be used to support graphics, depending on system memory size and other factors.
 - 15 Weights vary depending on configuration and manufacturing variability; 0.990 kg configurability: up to i7 vPro (U15), FHD NT Ultralight LCD, WLAN, 41Whr battery, M.2 2230 class 35 SSD, No security, non-backlit KB.
 - 16 Based on Dell internal analysis, October 2021.
 - 17 Simultaneous multi-network connection (or Connection based teaming) is a new connectivity feature under ExpressConnect. It simultaneously sends and receives data and video traffic using two or more wired or wireless connections. Based on Dell internal analysis, September 2021.
 - 18 Based on Dell internal analysis, November 2021.
 - 19 Simultaneous multi-network connection (or Connection based teaming) is a new connectivity feature under ExpressConnect. It simultaneously sends and receives data and video traffic using two wired or wireless connections. Based on Dell internal analysis, September 2021. Simultaneous Data Transfer works with wired and wireless networks. For select Dell platforms, a USB Wi-Fi adapter is required to connect a second Wi-Fi network.
 - 20 Tree-based bioplastic in lid of Latitude 5000 Series and bio-based rubber in Latitude 5000 & 7000 Series.
 - 21 EPEAT registered where applicable. EPEAT registration varies by country. See www.epeat.net for registration status by country.
 - 22 Based on a Forrester Study commissioned by Dell Technologies and Intel: The Total Economic Impact of Dell's PC as a Service", November 2020 <https://www.delltechnologies.com/asset/en-us/solutions/business-solutions/industry-market/forrester-the-total-economic-impact-of-dells-pc-as-a-service.pdf>
 - 23 Based on a Forrester Study commissioned by Dell Technologies and Intel: The Total Economic Impact of Dell's PC as a Service", November 2020 <https://www.delltechnologies.com/asset/en-us/solutions/business-solutions/industry-market/forrester-the-total-economic-impact-of-dells-pc-as-a-service.pdf>
 - 24 Based on internal analysis, April 2021. Dell Optimizer available in 2020 devices, not available in OptiPlex 3000 series, Latitude 3310 2-in-1 and Latitude Chromebook Enterprise. Feature availability and functionality varies by model.
 - 25 Available on Latitude 9000 and select 7000 series; Precision mobile workstations 7000 and select 5000 series. See product details for availability.
 - 26 ExpressResponse must be enabled in the Applications feature. DO learns how user uses the selected application(s) over several hours. Based on Dell testing using Sysmark 2018 benchmark on a Latitude system running productivity applications; and using performance evaluation benchmarks on Precision mobile workstations running ISV applications, March 2020. Improvement will vary based on product configuration, use, application and other factors
 - 27 User must input preferred apps first in order for them to be analyzed.
 - 28 ExpressConnect available with Dell Optimizer software version 2.0 and onwards. Download the latest at <https://www.dell.com/support/home>.
 - 29 Disclaimer: Simultaneous multi-network connection (or Connection based teaming) is a new connectivity feature under ExpressConnect. It simultaneously sends and receives data and video traffic using two wired or wireless connections. Based on Dell internal analysis.
 - 30 Best network selection based on signal strength, channel congestion, router type and others. Network suggestions based on user credentials.
 - 31 With ExpressConnect's optimized internet bandwidth. Based on testing performed by Dell Labs in June 2020, comparing performance with ExpressConnect enabled and disabled. Actual results may vary; testing results do not guarantee performance under test conditions. Subject to service provider's broadband subscription and coverage area; speeds may vary. Additional charges will apply. Contact your service provider for details.
 - 32 Based on Dell Internal analysis, January 2019.
 - 33 Based on Principled Technologies Report commissioned by Dell Technologies, "Deliver pre-configured systems to end users faster with Dell Provisioning for VMware Workspace ONE", January 2019, comparing deployment using Dell Provisioning for Workspace ONE vs. traditional deployment. Results extrapolated to deployment of 1000 systems, a week represents seven full workdays. Actual results will vary.
 - 34 Based on a Forrester Total Economic Impact™ Study commissioned by VMware, "The Total Economic Impact™ of VMware Workspace ONE for Windows 10", September 2018. Results from interviews with VMware Workspace ONE customers and/or based on a 12,000-employee composite organization.
 - 35 Based on a Principled Technologies test report, "Spend Less Time and Effort Troubleshooting Laptop Hardware Failures" dated April 2018. Testing commissioned by Dell, conducted in the United States. Actual results will vary. Full report: <http://facts.pt/L52XKM>
 - 36 Based on Dell internal analysis, November 2021.
 - 37 Approximately 78% recycled content and 22% renewable content in the form of FSC paper fibers. Excludes optional items added to order and included in box.
 - 38 Based on Dell analysis of battery life usage model calculations, Nov. 2020. Results vary depending on use, operating conditions and other factors.
- * Based on Dell internal analysis, November 2021.