

# XPass 2

Outdoor Compact RFID Device



XPass 2 is an outdoor compact RFID device based on Suprema's state-of-the-art RFID technology and multi-hardware platform. With the multi-form factor technology, mullion-type, gangbox-type, and gangbox keypad-type are all supported which provides perfect installation in various environments. XPass 2 also supports dual-frequency (125kHz / 13.56MHz) RFID technology and can read the mobile cards using NFC and BLE, the latest mobile communication technologies. Packed in a rugged IP65/IP67 rated dust & waterproof performance as well as IK08 rated vandal-proof structure, suitable for tough environment and outdoor installation.

### Features

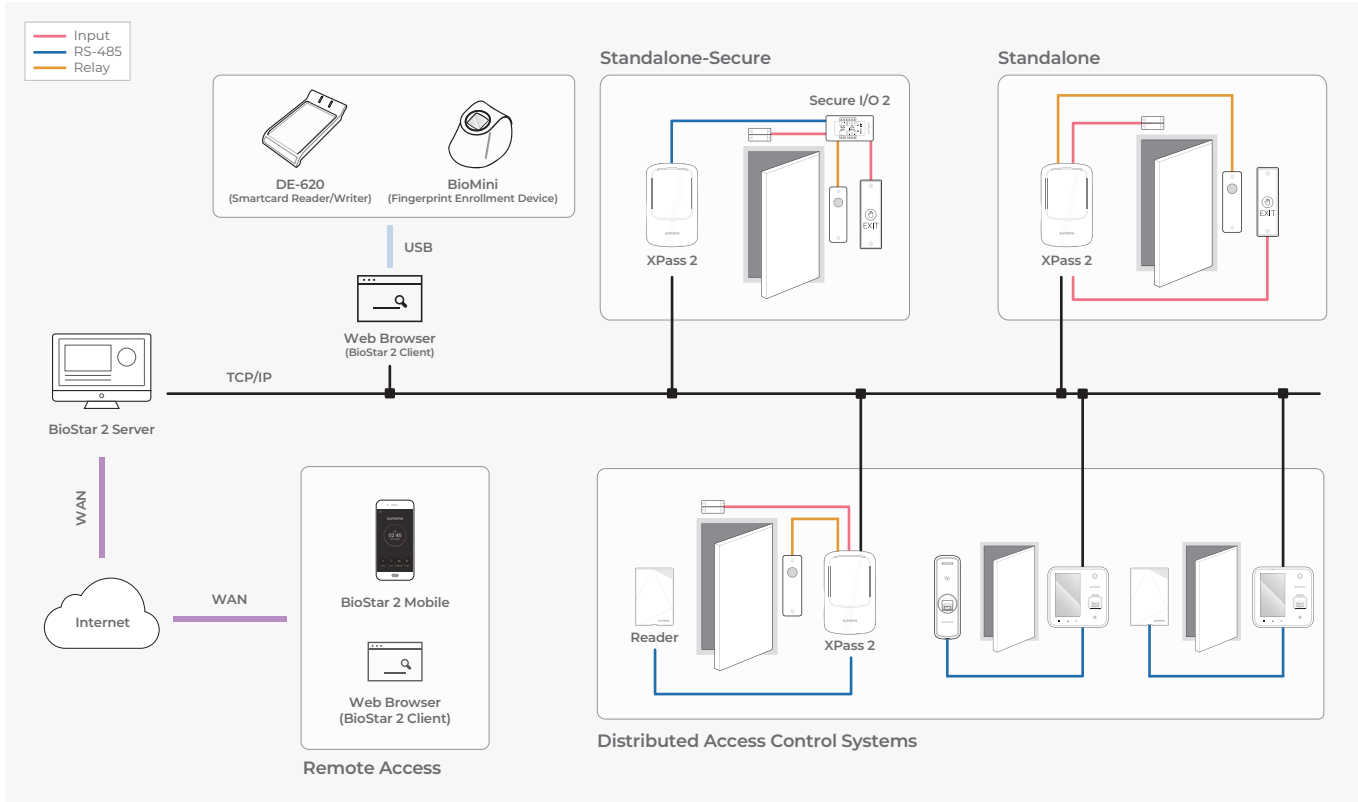
-  **Mobile Access**
-  **OSDP** Industry standard communication via OSDP
-  **Multi-type hardware structure**
-  **Enhanced security with the Secure Element**
-  **IP67 - Water and Dust Resistant**
-  **IK08 - Vandal Resistant**
-  **Multi-card Reading**
-  **Power over Ethernet**

### Specifications

125kHz card compatibility	EM
13.56MHz card compatibility	MIFARE, MIFARE Plus, DESFire EV1/EV2*, FeliCa
CPU	1.0GHz
Memory	4GB Flash + 64MB SDRAM
Max. Users	200,000
Max. Text Logs	1,000,000
Mobile card	NFC, BLE
IP rating	IP67
IK rating	IK08
Installation type	Mullion: XP2-MDPB Gangbox: XP2-GDPB, XP2-GKDPB
Keypad	Not Supported: XP2-MDPB, XP2-GDPB Supported (3x4): XP2-GKDPB
Ethernet	Supported (10/100 Mbps, auto MDI/MDI-X)
RS-485	1ch Master or Slave
Wiegand	1ch In or Out
TTL	2ch Input
Relay	1 Relay
PoE	Supported (IEEE 802.3af compliant)
Sound	Multi-tone buzzer
Operating Temperature	-35°C ~ 65°C
Operating Humidity	0% ~ 95%, non-condensing
Power	DC 12V or DC 24V
Dimensions (WxHxD, mm)	48 x 145 x 27: XP2-MDPB 80 x 130 x 25: XP2-GDPB, XP2-GKDPB
Certificates	CE, FCC, KC, RoHS, REACH, WEEE, SIG

\* DESFire EV2 cards are supported by having backward compatibility of DESFire EV1 cards. CSN and smart card functions are compatible with XPass 2.

### System Configurations



### Suprema Inc.

17F Parkview Tower, 248, Jeongjail-ro, Bundang-gu, Seongnam-si, Gyeonggi-do, 13554, Republic of Korea  
 T +82 31 783 4502 E sales\_sys@supremainc.com www.supremainc.com



For more information about Suprema's global branch offices, visit the webpage below by scanning the QR code.  
<https://www.supremainc.com/en/about/contact-us.asp>