

GASTROINTESTINAL VIDEOSCOPE

GIF-H170

Outstanding HDTV image quality while keeping a slimmer outer diameter



Main Features

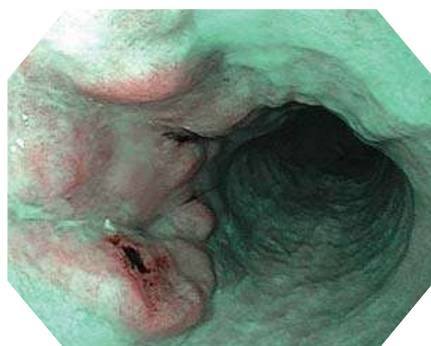
HDTV Image Quality

HDTV captures and displays clear images with precise details and accurate colors, helping you to perform more advanced procedures.



NBI (Narrow Band Imaging)

NBI facilitates observation of capillaries and other structures on the mucosal surface. It helps identify suspicious areas.



Close Focus

Close focus enables you to obtain an enlarged, close-up image by moving the scope tip as close as 2 mm from the mucosa.

Slim Design

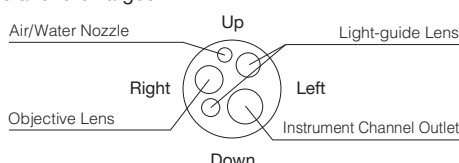
GIF-H170 offers an excellent balance of both size and performance with its 9.2 mm outer diameter.


Waterproof Connector

The newly designed connector is fully submersible and therefore eliminates the need for a water-resistant cap, while minimizing the risk of damage due to accidental immersion.



Specifications

Optical System	Field of view	140°
	Direction of view	Forward viewing
	Depth of field	2-100 mm
Insertion Section	Distal end outer diameter	9.2 mm
	Distal end enlarged	
		
	Insertion tube outer diameter	9.2 mm
	Working length	1030 mm

Instrument Channel	Channel inner diameter	2.8 mm
	Minimum visible distance	3.0 mm from the distal end
High-frequency	Direction from which endotherapy accessories enter and exit the endoscopic image	
	Cauterization treatment	Available
Bending Section	Angulation range	Up 210°
		Down 90°
		Right 100°
		Left 100°
Total Length	1350 mm	

Specifications, design and accessories are subject to change without any notice or obligation on the part of the manufacturer.